

NOTE:
A GEOTECHNICAL ENGINEER LICENSED IN THE PROVINCE OF ONTARIO IS TO INSPECT ALL SUBGRADE SURFACES FOR FOOTING AND PAVEMENT STRUCTURES PRIOR TO CONSTRUCTION

NOTE:
ALL EXISTING POST & WIRE FENCE, CULVERTS, UTILITY WIRE / POLES, TREES, SHRUBS ETC. WITHIN LOTS, BLOCKS AND ROADS TO BE REMOVED, UNLESS OTHERWISE NOTED

NOTE RE: PERFORATED PIPE
PERFORATED PIPE IS REQUIRED FOR SWALE SLOPE LESS THAN 1.5%. REFER TO CITY STD. S29, S30 FOR REAR YARD TRENCH AND PIPE DETAIL ONLY

NOTE:
ALL SWALES SHALL BE 0.15m DEEP WITH 3:1 SIDE SLOPES UNLESS OTHERWISE INDICATED

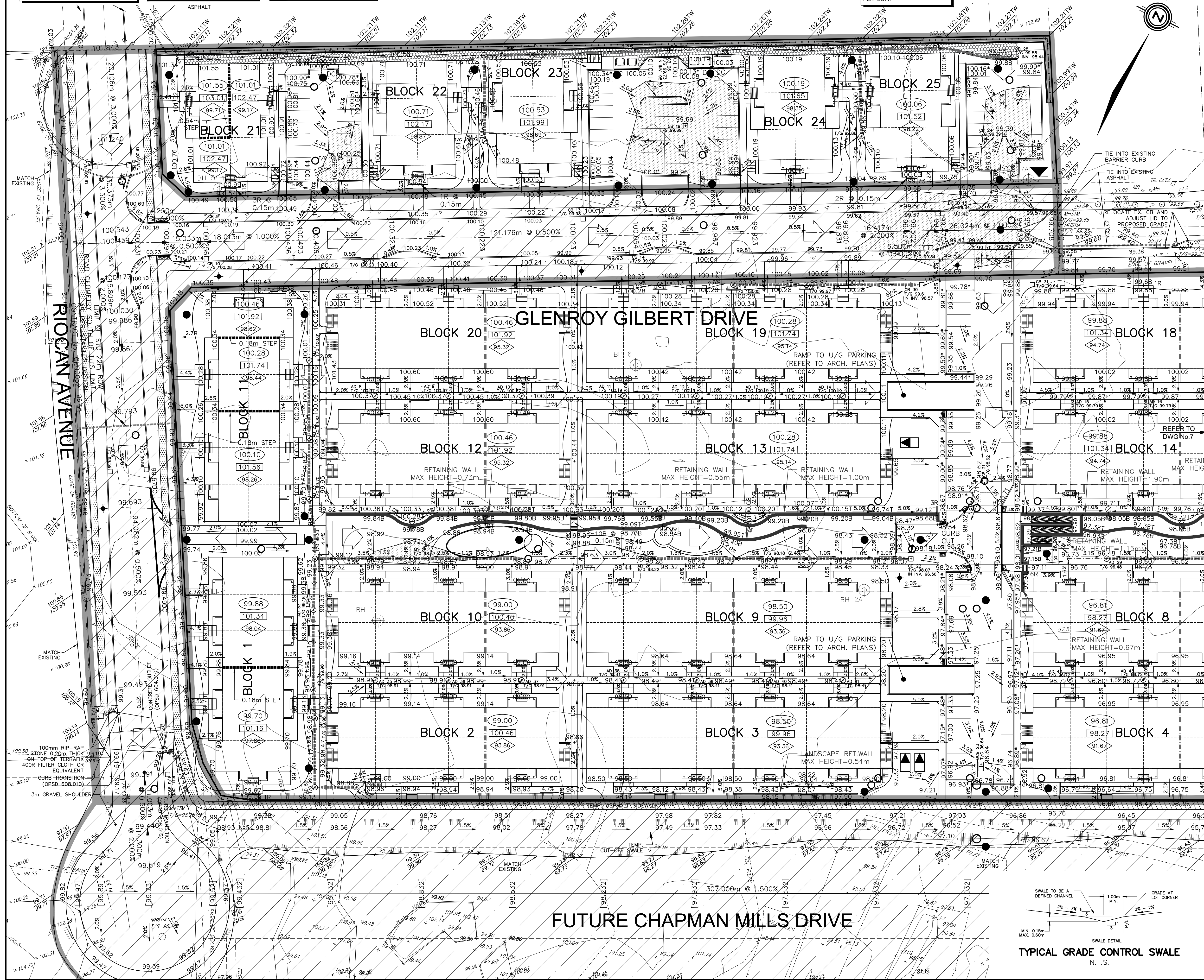
NOTE:
REFER TO DETAIL ON DWG 2 FOR FURTHER DETAILS ON SERVICES TO THE STACKED TOWNHOMES

ANY DISTURBED AREA DURING CONSTRUCTION TO BE RESTORED TO THE ORIGINAL CONDITION OR BETTER TO THE SATISFACTION OF THE AUTHORITIES HAVING JURISDICTION

CONTRACTOR TO VERIFY THE PRECISE LOCATIONS AND INVERT ELEVATIONS OF EX UNDERGROUND SERVICES AND EX UTILITIES PRIOR TO STARTING CONSTRUCTION

PERMISSION REQUIRED FOR WORK ON ADJACENT LANDS
NOTE:
ENTRANCES TO PRIVATE SITE PER SC7.1

NOTE:
REFER TO CITY STD. SC7.1 FOR DRIVEWAY DETAIL



LEGEND

PROPOSED ELEVATION	103.45	OVERLAND FLOW DIRECTION	→
EXISTING ELEVATION	102.73	EXTERNAL OVERLAND FLOW DIRECTION	→
FUTURE ELEVATION	[93.90]	EMERGENCY OVERLAND FLOW DIRECTION	→
PROPOSED SWALE GRADE	-1.5%	TOP OF WALL ELEVATION	103.10 T
HIGH POINT	102.16	RETAINING WALL AND ELEVATIONS	103.10 T
STREET CATCHBASIN	102.44 B	BOTTOM OF WALL ELEVATION	102.44 B
STREET CATCHBASIN WITH CATCHBASIN MANHOLE		CHAINLINK FENCE (1.5m UNLESS OTHERWISE NOTED)	
TIE CATCHBASIN		NOISE BARRIER (3.0m UNLESS OTHERWISE NOTED)	
ELBOW CATCHBASIN		VALVE & VB	
HYDRANT, VALVE & VB		VALVE & VC	
VALVE & VC		VALVE & VB	
VALVE & VB		BUILDING ENVELOPE	
BUILDING ENVELOPE		TOP OF FOUNDATION (TOF)	
TOP OF FOUNDATION (TOF)		FINISHED FLOOR ELEVATION (FFE)	
FINISHED FLOOR ELEVATION (FFE)		UNDERSIDE OF FOOTING ELEVATION (USF)	
UNDERSIDE OF FOOTING ELEVATION (USF)		UNITS REQUIRING WATER PRESSURE REDUCING VALVES	
UNITS REQUIRING WATER PRESSURE REDUCING VALVES		WALKOUT UNITS	
WALKOUT UNITS		SLAB ON GRADE	
SLAB ON GRADE		250µ PVC PERFORATED PIPE (REFER TO CITY STD S29 FOR REAR YARD TRENCH AND PIPE DETAILS ONLY) (SUBRAN APPLIED FOR SLOPE LESS THAN 1.5%)	
250µ PVC PERFORATED PIPE (REFER TO CITY STD S29 FOR REAR YARD TRENCH AND PIPE DETAILS ONLY) (SUBRAN APPLIED FOR SLOPE LESS THAN 1.5%)		HYDRO SWITCHGEAR	
HYDRO SWITCHGEAR		HYDRO TRANSFORMER	
HYDRO TRANSFORMER		STREET LIGHT STANDARD	
STREET LIGHT STANDARD		TACTILE WALKING SURFACE INDICATOR (AS PER CITY OF OTTAWA STD. SC6)	
TACTILE WALKING SURFACE INDICATOR (AS PER CITY OF OTTAWA STD. SC6)		PREVIOUS PHASES / PHASES NOT PART OF CURRENT GRADING APPROVAL	
PREVIOUS PHASES / PHASES NOT PART OF CURRENT GRADING APPROVAL			

NOT FOR CONSTRUCTION

No.	BY	DATE	DESCRIPTION
6	S.L.M.	23-10-08	4TH SUBMISSION
5	S.L.M.	23-09-22	ISSUED FOR TENDER
4	S.L.M.	23-09-08	ISSUED FOR TENDER
3	S.L.M.	23-06-30	3RD SUBMISSION

TOPOGRAPHIC INFORMATION
TOPOGRAPHIC INFORMATION PROVIDED BY STANTEC GEOMATICS LTD., PROJECT No. 161614291-111, DATED MARCH 1, 2022

SITE PLAN INFORMATION
SITE PLAN PROVIDED BY SRN ARCHITECTS LTD., PROJECT No. S21001, DATED OCTOBER 5, 2023

LEGAL INFORMATION
CALCULATED DRAFT PLAN PROVIDED BY STANTEC GEOMATICS LTD., PROJECT No. 161614291-131, DATED AUGUST 9, 2023

BENCH MARK
ELEVATIONS ARE REFERRED TO THE CANADIAN GEODETIC VERTICAL DATUM (CGVD-1928:1978) AND ARE DERIVED FROM BENCHMARK MONUMENT No. 196530071*, HAVING A PUBLISHED ELEVATION OF 99.742 METRES

MINTO COMMUNITIES INC. BARRHAVEN TOWN CENTRE STAGE 1

DSEL
120 Iber Road Unit 103
Slittsville, Ontario, K2S 1E9
Tel. (613) 836-0856
Fax. (613) 836-7183
www.DSEL.ca

S.L. MERRICK
10166523
PROVINCE OF ONTARIO
2023-10-04

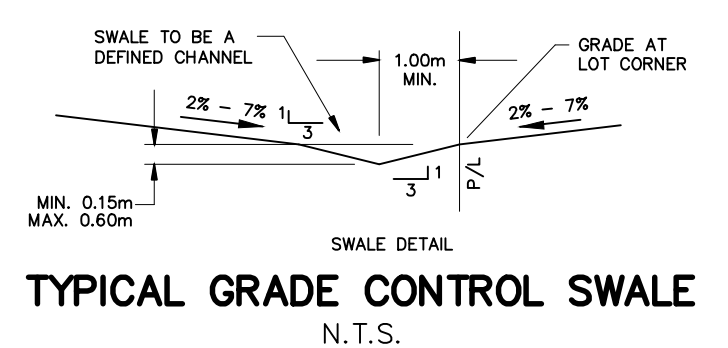
Ottawa

110 Laurier Ave W
Ottawa, Ontario, K1P 1J1
Tel. (613) 580-2400
www.Ottawa.ca

© DSEL

GRADING PLAN WEST

DRAWN BY: AM	CHECKED BY: BC	PROJECT No. 15-816
DESIGNED BY: BC	CHECKED BY: SM	SHEET No. 6
SCALE: 1:400		



CITY PLAN No. 18822
CITY FILE No. D07-12-22-0104