

NOTE:
A GEOTECHNICAL ENGINEER LICENSED IN THE PROVINCE OF ONTARIO IS TO INSPECT ALL SUBGRADE SURFACES FOR FOOTING AND PAVEMENT STRUCTURES PRIOR TO CONSTRUCTION

NOTE:
ALL EXISTING POST & WIRE FENCE, CULVERTS, UTILITY WIRE / POLES, TREES, SHRUBS ETC. WITHIN LOTS, BLOCKS AND ROADS TO BE REMOVED, UNLESS OTHERWISE NOTED

NOTE RE: PERFORATED PIPE
PERFORATED PIPE IS REQUIRED FOR SWALE SLOPE LESS THAN 1.5%. REFER TO CITY STD. S29, S30 FOR REAR YARD TRENCH AND PIPE DETAIL ONLY

NOTE:
ALL SWALES SHALL BE 0.15m DEEP WITH 3:1 SIDE SLOPES UNLESS OTHERWISE INDICATED

ANY DISTURBED AREA DURING CONSTRUCTION TO BE RESTORED TO THE ORIGINAL CONDITION OR BETTER TO THE SATISFACTION OF THE AUTHORITIES HAVING JURISDICTION

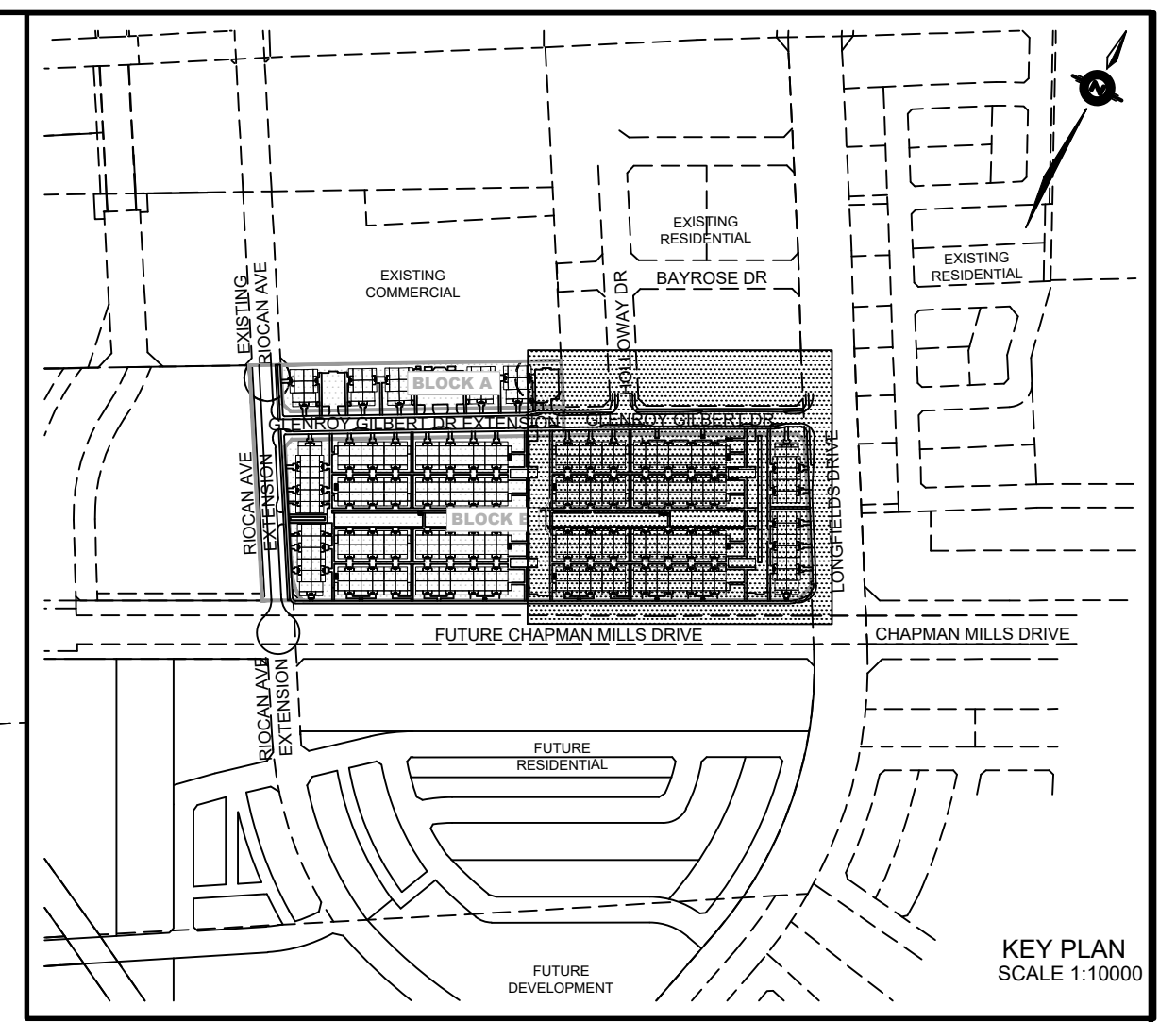
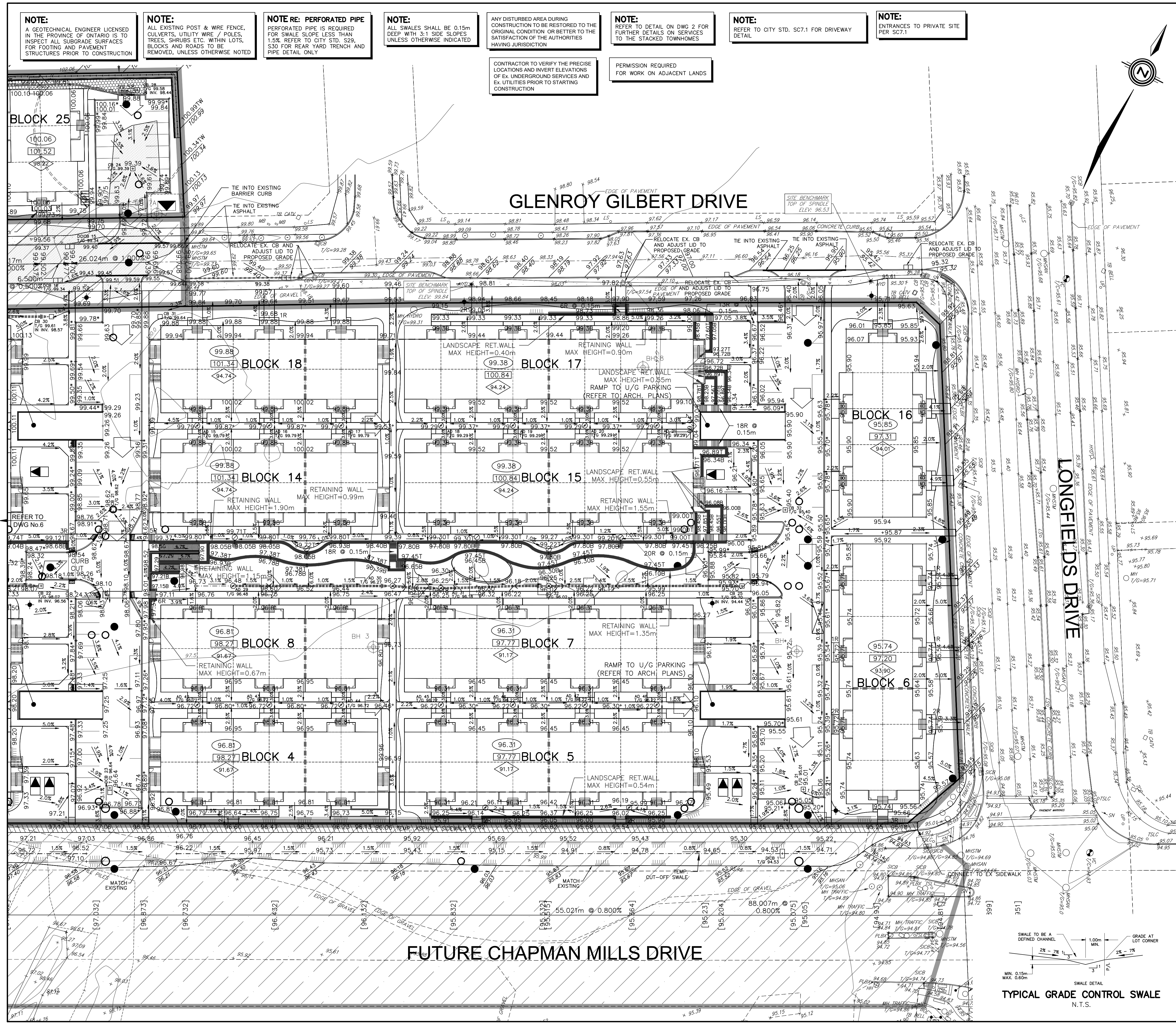
NOTE:
REFER TO DETAIL ON DWG 2 FOR FURTHER DETAILS ON SERVICES TO THE STACKED TOWNHOMES

NOTE:
REFER TO CITY STD. SC7.1 FOR DRIVEWAY DETAIL

NOTE:
ENTRANCES TO PRIVATE SITE PER SC7.1

CONTRACTOR TO VERIFY THE PRECISE LOCATIONS AND INVERT ELEVATIONS OF EX. UNDERGROUND SERVICES AND EX. UTILITIES PRIOR TO STARTING CONSTRUCTION

PERMISSION REQUIRED FOR WORK ON ADJACENT LANDS



LEGEND

PROPOSED ELEVATION	103.45	OVERLAND FLOW DIRECTION	→
EXISTING ELEVATION	102.73	EXTERNAL OVERLAND FLOW DIRECTION	→
FUTURE ELEVATION	[93.90]	EMERGENCY OVERLAND FLOW DIRECTION	→
PROPOSED SWALE GRADE	1.5%	TOP OF WALL ELEVATION	103.10 T
HIGH POINT	X	BOTTOM OF WALL ELEVATION	102.44 B
STREET CATCHBASIN	○	CHAINLINK FENCE (1.5m UNLESS OTHERWISE NOTED)	—
STREET CATCHBASIN WITH CLOSED LID	○	NOISE BARRIER (3.0m UNLESS OTHERWISE NOTED)	—
CATCHBASIN MANHOLE	○	VALVE & VC	—
TIE CATCHBASIN	○	VALVE & VB	—
ELBOW CATCHBASIN	○	BUILDING ENVELOPE (USE TOP OF FOUNDATION (TOF))	—
HYDRANT, VALVE & VB	—	FINISHED FLOOR ELEVATION (FFE)	—
VALVE & VC	—	UNDERSIDE OF FOOTING ELEVATION (USE)	—
VALVE & VB	—	UNITS REQUIRING WATER PRESSURE REDUCING VALVES	—
RETAINING WALL AND ELEVATIONS	—	WALKOUT UNITS	—
TOP OF WALL ELEVATION	103.10 T	SLAB ON GRADE	—
BOTTOM OF WALL ELEVATION	102.44 B	HYDRO SWITCHGEAR	—
CHAINLINK FENCE (1.5m UNLESS OTHERWISE NOTED)	—	HYDRO TRANSFORMER	—
NOISE BARRIER (3.0m UNLESS OTHERWISE NOTED)	—	STREET LIGHT STANDARD	—
VALVE & VC	—	TACTILE WALKING SURFACE INDICATOR (AS PER CITY OF OTTAWA STD. SC6)	—
VALVE & VB	—	PREVIOUS PHASES / PHASES NOT PART OF CURRENT GRADING APPROVAL	—
BUILDING ENVELOPE (USE TOP OF FOUNDATION (TOF))	—		
FINISHED FLOOR ELEVATION (FFE)	—		
PROPERTY BOUNDARY	—		
3:1 TERRACING MAXIMUM SLOPE	—		
FOUNDING AREA WITH SPILLWAY ELEVATION (MAXIMUM 0.30m)	—		
250# PVC PERFORATED PIPE (REFER TO CITY STD S29 FOR REAR YARD TRENCH AND PIPE DETAILS ONLY) (SUBRAN APPLIED FOR SLOPE LESS THAN 1.5%)	—		
FIREWALL	—		

NOT FOR CONSTRUCTION

No.	BY	DATE	DESCRIPTION
6	S.L.M.	23-10-08	4TH SUBMISSION
5	S.L.M.	23-09-22	ISSUED FOR TENDER
4	S.L.M.	23-09-06	ISSUED FOR TENDER
3	S.L.M.	23-06-30	3RD SUBMISSION

TOPOGRAPHIC INFORMATION
TOPOGRAPHIC INFORMATION PROVIDED BY STANTEC GEOMATICS LTD., PROJECT No. 161614291-111, DATED MARCH 1, 2022

SITE PLAN INFORMATION
SITE PLAN PROVIDED BY SRN ARCHITECTS LTD., PROJECT No. S21001, DATED OCTOBER 5, 2023

LEGAL INFORMATION
CALCULATED DRAFT PLAN PROVIDED BY STANTEC GEOMATICS LTD., PROJECT No. 161614291-131, DATED AUGUST 9, 2023

BENCH MARK
ELEVATIONS ARE REFERRED TO THE CANADIAN GEODETIC VERTICAL DATUM (CGVD-1928:1978) AND ARE DERIVED FROM BENCHMARK MONUMENT No. 196530071*1, HAVING A PUBLISHED ELEVATION OF 99.742 METRES

MINTO COMMUNITIES INC. BARRHAVEN TOWN CENTRE STAGE 1

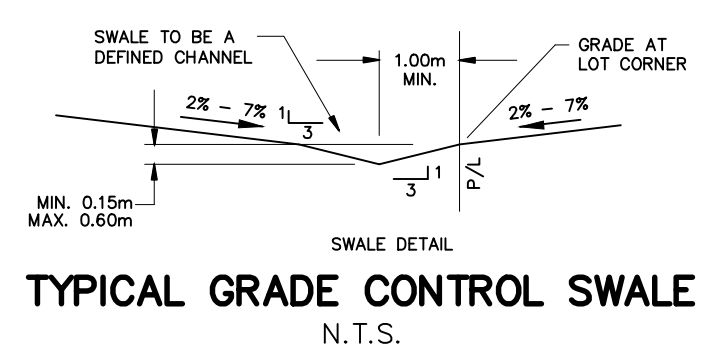
DSEL LICENSED PROFESSIONAL ENGINEER
S.L. MERRICK
120 Ber Road Unit 103
Slittsville, Ontario, K2S 1E9
Tel. (613) 836-0856
Fax. (613) 836-7183
www.DSEL.ca



110 Laurier Ave W
Ottawa, Ontario, K1P 1J1
Tel. (613) 580-2400
www.Ottawa.ca

GRADING PLAN EAST

DRAWN BY: AM	CHECKED BY: BC	PROJECT No. 15-816
DESIGNED BY: BC	CHECKED BY: SM	SHEET No. 7
SCALE: 1:400		



CITY PLAN No. 18822
CITY FILE No. D07-12-22-0104