

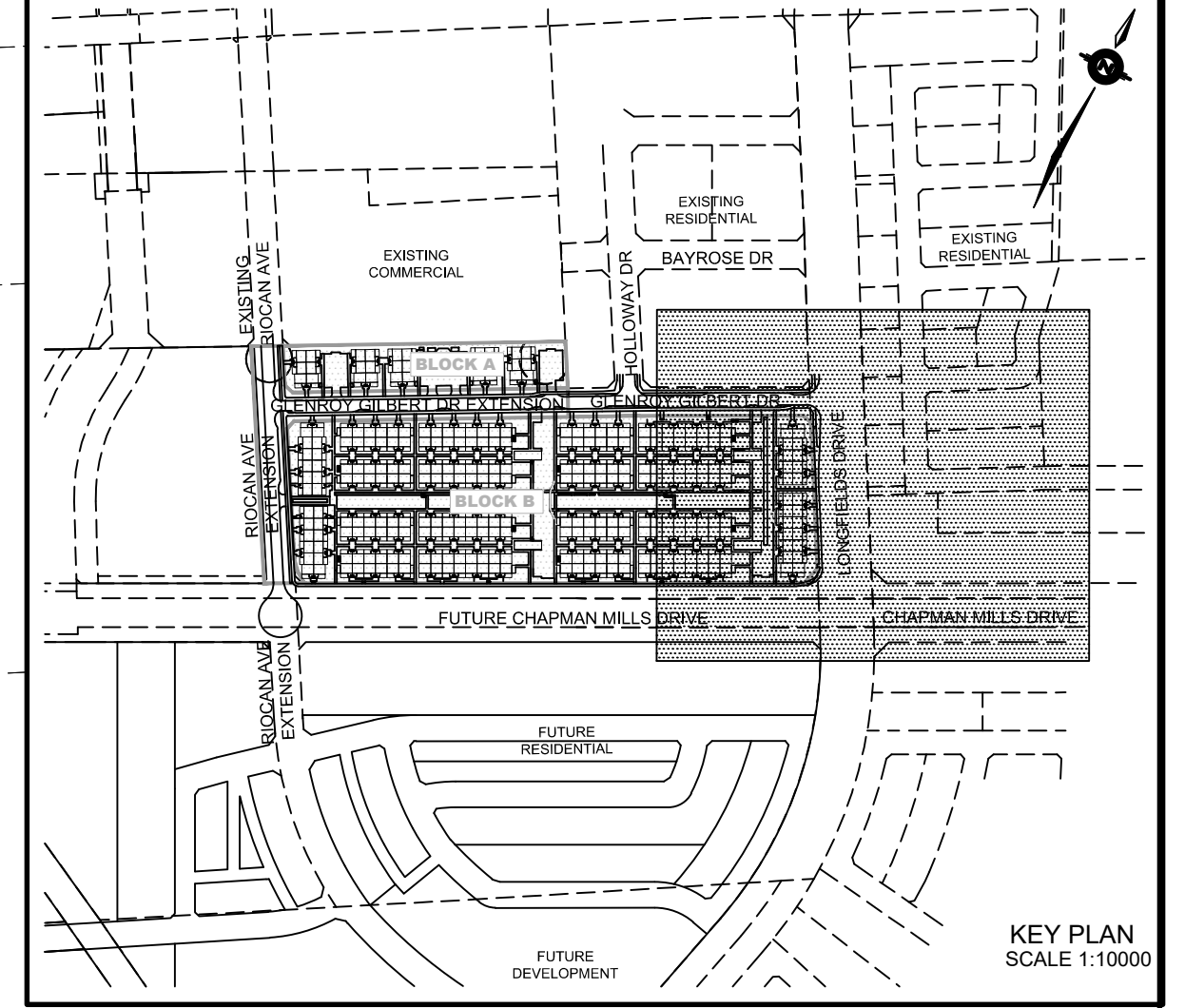
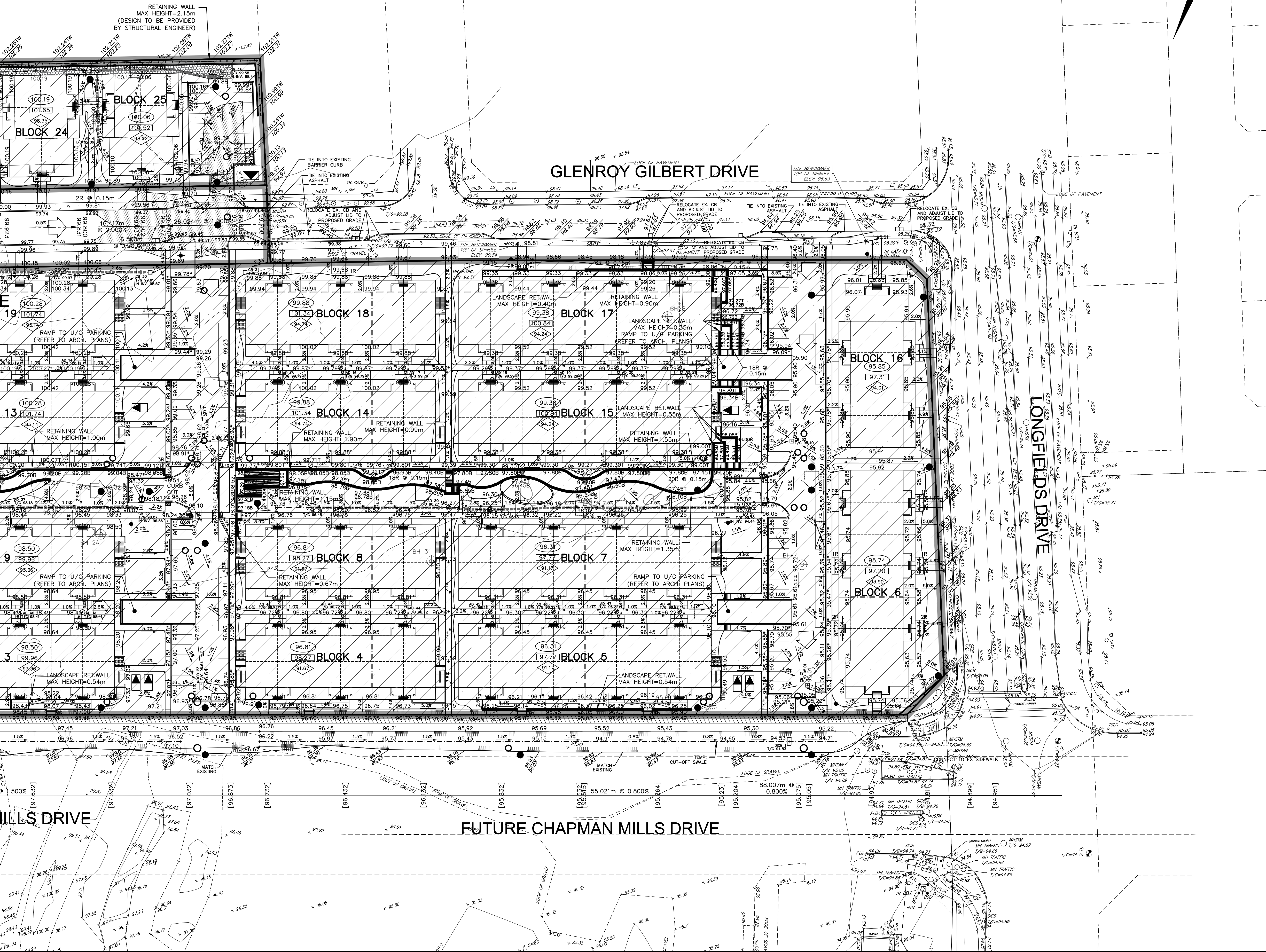
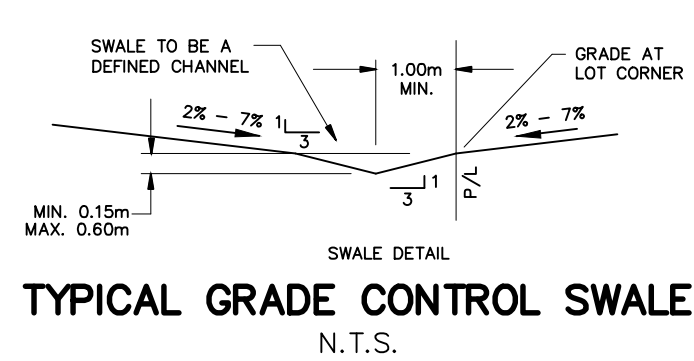
NOTE:
A GEOTECHNICAL ENGINEER LICENSED IN THE PROVINCE OF ONTARIO IS TO INSPECT ALL SUBGRADE SURFACES FOR FOOTING AND PAVEMENT STRUCTURES PRIOR TO CONSTRUCTION

NOTE:
ALL EXISTING POST & WIRE FENCE, CULVERTS, UTILITY WIRE / POLES, TREES, SHRUBS ETC. WITHIN LOTS, BLOCKS AND ROADS TO BE REMOVED, UNLESS OTHERWISE NOTED

NOTE RE: PERFORATED PIPE
PERFORATED PIPE IS REQUIRED FOR SWALE SLOPE LESS THAN 1.5%. REFER TO CITY STD. S29, S30 FOR REAR YARD TRENCH AND PIPE DETAIL ONLY

NOTE:
ALL SWALES SHALL BE 0.15m DEEP WITH 3:1 SIDE SLOPES UNLESS OTHERWISE INDICATED

NOTE:
ENTRANCES TO PRIVATE SITE PER SC7.1



LEGEND

PROPOSED ELEVATION	103.45	OVERLAND FLOW DIRECTION	→
EXISTING ELEVATION	102.73	EXTERNAL OVERLAND FLOW DIRECTION	→
FUTURE ELEVATION	[93.90]	EMERGENCY OVERLAND FLOW DIRECTION	→
PROPOSED SWALE GRADE	1.5%	TOP OF WALL ELEVATION	103.10 T
HIGH POINT	102.16	BOTTOM OF WALL ELEVATION	102.44 B
STREET CATCHBASIN	○	CHAINLINK FENCE (1.5m UNLESS OTHERWISE NOTED)	—
CATCHBASIN WITH CLOSED LID	○	NOISE BARRIER (3.0m UNLESS OTHERWISE NOTED)	—
CATCHBASIN MANHOLE	○	DECORATIVE FENCE (SEE LANDSCAPE DWGS FOR DETAIL)	—
TEE CATCHBASIN	○	CONSTRUCTION FENCE (FF)	—
ELBOW CATCHBASIN	○	PROPERTY BOUNDARY	—
HYDRANT, VALVE & VB	○	3:1 TERRACING MAXIMUM SLOPE	—
VALVE & VC	○	ELEVATION (USP)	○
VALVE & VB	○	PRV	○
BUILDING ENVELOPE	—	W.O.	○
TOP OF FOUNDATION (TOF)	—	50G	○
FINISHED FLOOR ELEVATION (FFE)	—	250# PVC PERFORATED PIPE (REFER TO CITY STD S29 FOR REAR YARD TRENCH AND PIPE DETAILS ONLY)	—
UNDERSIDE OF FOOTING	—	SHURBAN APPLIED FOR SLOPE LESS THAN 1.5%	—
ELEVATION (USP)	—	HYDRO SWITCHGEAR	○
UNITS REQUIRING WATER	—	HYDRO TRANSFORMER	○
PRESSURE REDUCING VALVES	—	STREET LIGHT STANDARD	○
WALKOUT UNITS	—	TACTILE WALKING SURFACE INDICATOR (AS PER CITY OF OTTAWA STD. SC6)	—
SLAB ON GRADE	—	PREVIOUS PHASES / PHASES NOT PART OF CURRENT GRADING APPROVAL	—
HYDRO SWITCHGEAR	○		
HYDRO TRANSFORMER	○		
STREET LIGHT STANDARD	○		
TACTILE WALKING SURFACE INDICATOR (AS PER CITY OF OTTAWA STD. SC6)	—		
PREVIOUS PHASES / PHASES NOT PART OF CURRENT GRADING APPROVAL	—		

NOT FOR CONSTRUCTION

No.	BY	DATE	DESCRIPTION
6	S.L.M.	23-10-06	ISSUED FOR TENDER
5	S.L.M.	23-09-22	ISSUED FOR TENDER
4	S.L.M.	23-09-06	ISSUED FOR TENDER
3	S.L.M.	23-06-30	3RD SUBMISSION

TOPOGRAPHIC INFORMATION
TOPOGRAPHIC INFORMATION PROVIDED BY STANTEC GEOMATICS LTD., PROJECT No. 161614291-111, DATED MARCH 1, 2022

SITE PLAN INFORMATION
SITE PLAN PROVIDED BY SRN ARCHITECTS LTD., PROJECT No. S21001, DATED OCTOBER 5, 2023

LEGAL INFORMATION
CALCULATED DRAFT PLAN PROVIDED BY STANTEC GEOMATICS LTD., PROJECT No. 161614291-131, DATED AUGUST 9, 2023

BENCH MARK
ELEVATIONS ARE REFERRED TO THE CANADIAN GEODETIC VERTICAL DATUM (CGVD-1928:1978) AND ARE DERIVED FROM BENCHMARK MONUMENT No. 196530071-1, HAVING A PUBLISHED ELEVATION OF 99.742 METRES

MINTO COMMUNITIES INC.
BARRHAVEN TOWN CENTRE
GLENROY GILBERT DRIVE RIOCAN AVENUE & CHAPMAN MILLS DRIVE EXTENSION

DSEL
120 Ber Road Unit 103
Slitsville, Ontario, K2S 1E9
Tel. (613) 836-0856
Fax. (613) 836-7183
www.DSEL.ca

PROFESSIONAL ENGINEER
S. L. MERRICK
100166223
2025-10-04
PROVINCE OF ONTARIO

Ottawa
110 Laurier Ave W
Ottawa, Ontario, K1P 1J1
Tel. (613) 580-2400
www.Ottawa.ca

CITY ROW GRADING PLAN EAST

DRAWN BY: AM	CHECKED BY: BC	PROJECT No. 15-816
DESIGNED BY: BC	CHECKED BY: SM	SHEET No. 11
SCALE: 1:500		

CITY PLAN No. 18822
CITY FILE No. D07-12-22-0104