

PAVEMENT DESIGN
 40mm SUPERPAVE 12.5 ASPHALTIC CONCRETE
 50mm SUPERPAVE 13.0 ASPHALTIC CONCRETE
 150mm OPSS GRANULAR A CRUSHED STONE
 450mm OPSS GRANULAR B TYPE II

NOTE:
 ANY DISTURBED AREA DURING CONSTRUCTION TO BE RESTORED TO THE ORIGINAL CONDITION OR BETTER TO THE SATISFACTION OF THE AUTHORITIES HAVING JURISDICTION

NOTE:
 CONTRACTOR TO VERIFY THE PRECISE LOCATIONS AND INVERT ELEVATIONS OF EX. UNDERGROUND SERVICES AND EX. UTILITIES PRIOR TO STARTING CONSTRUCTION

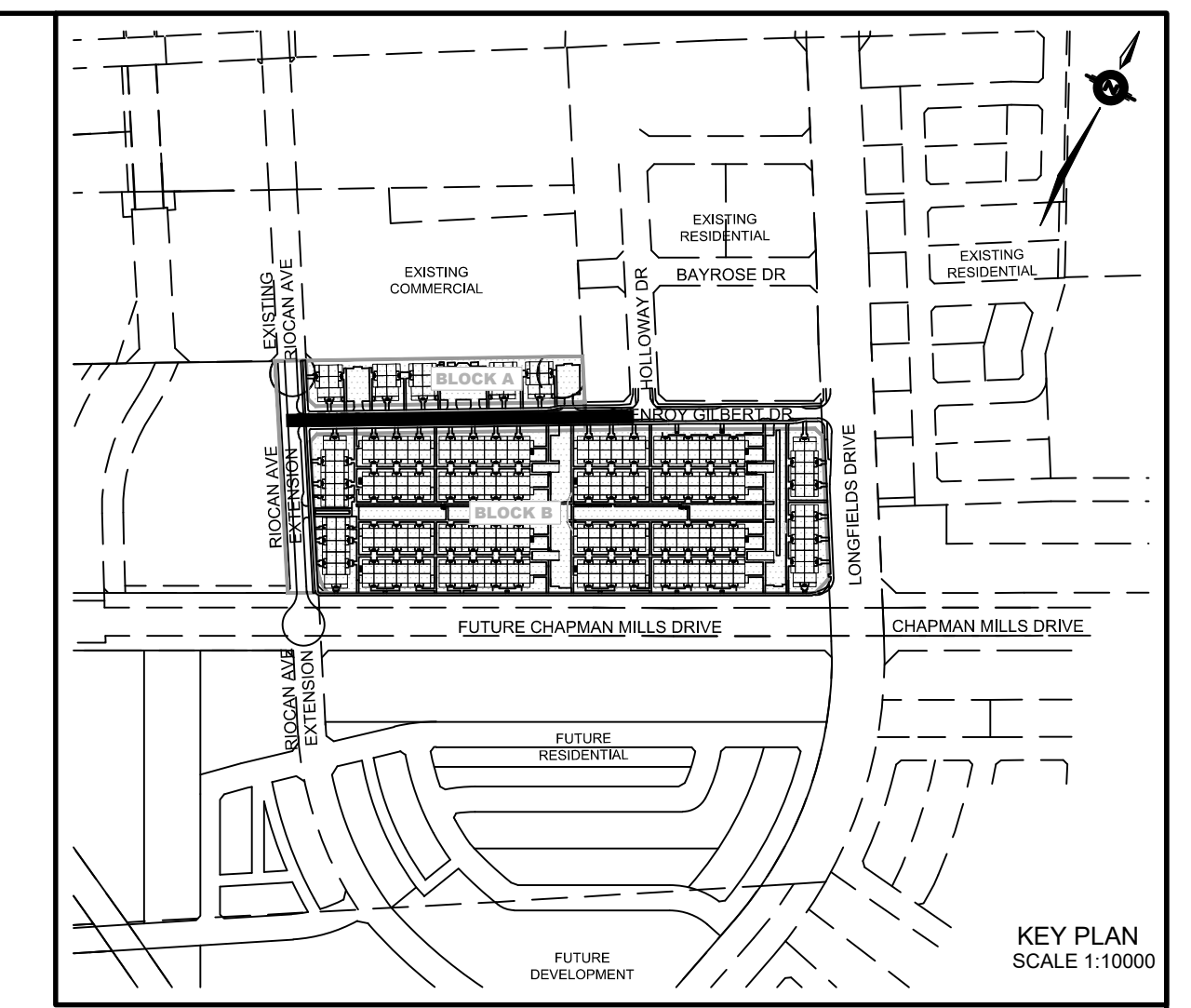
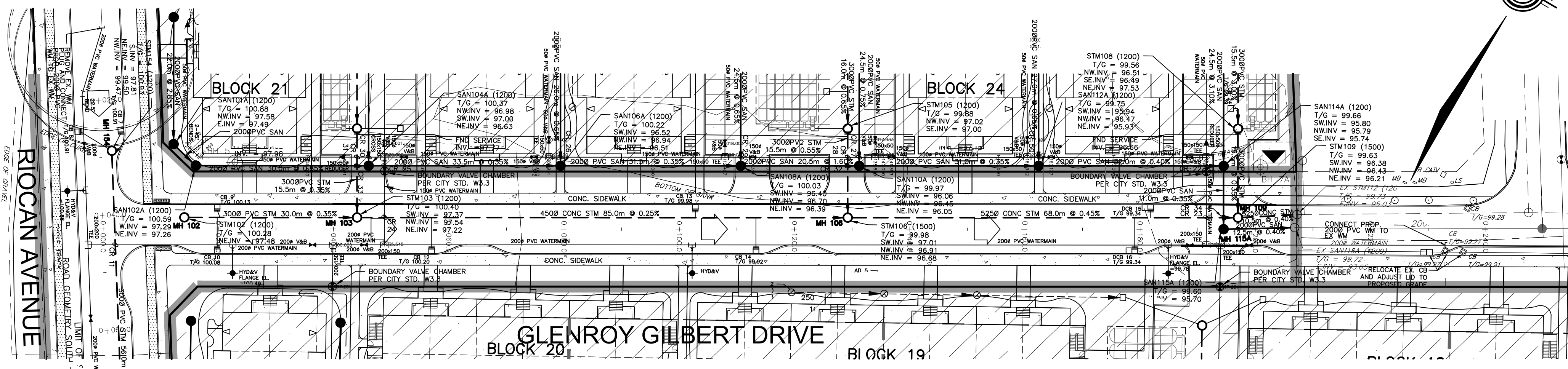
NOTE:
 ALL EXISTING TREES, SHRUBS ETC. WITHIN LOTS, BLOCKS AND ROADS TO BE REMOVED, UNLESS OTHERWISE NOTED

PERMISSION REQUIRED
 FOR WORK ON ADJACENT LANDS

NOTE: CATCHBASIN DATA
 FOR CATCHBASIN DATA, REFER TO DRAWING NO. 3 FOR DETAIL.

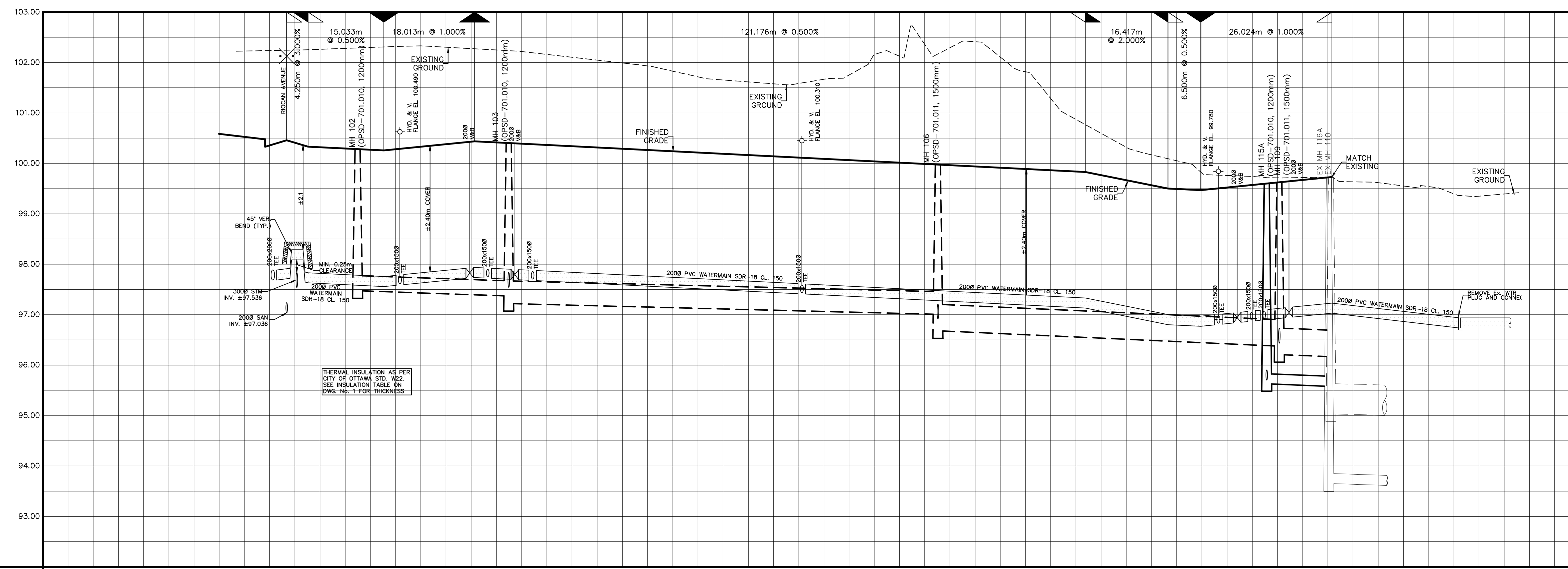
NOTE:
 FOR WATERMAIN STUBS, 2.4m MIN. COVER TO BE PROVIDED

NOTE-RE: TEST PIT/BOREHOLE EXCAVATIONS
 ANY DISTURBED MATERIAL ENCOUNTERED BELOW THE SUBGRADE LEVEL WITHIN A BUILDING FOOTPRINT TO BE SUB-EXCAVATED AND BACKFILLED WITH COMPACTED ENGINEERED FILL AS PER GEOTECHNICAL ENGINEERS RECOMMENDATION.



LEGEND

- CROSS
- 45° BEND
- LATERAL
- HYDRANT, VALVE & VB
- TEE
- VALVE & VC
- VALVE & VB
- 22.5° BEND
- 11.25° BEND
- REDUCER
- CAP
- SANITARY MAINTENANCE HOLE
- CAP
- STREET CATCHBASIN & LEAD
- STREET CATCHBASIN WITH CLOSED LID & LEAD
- STORM MAINTENANCE HOLE
- CURB INLET CATCH-BASIN & LEAD
- CATCHBASIN
- MAINTENANCE HOLE
- INTERCONNECTED CATCH BASIN & LEADS
- TEE CATCHBASIN
- PERFORATED PIPE
- ELBOW CATCHBASIN
- PART OF SEPARATE APPLICATION
- SINGLE SERVICE LOCATION (SAN & WM)
- SINGLE SERVICE LOCATION (ST, SAN & WM)
- HYDRO SWITCHGEAR
- HYDRO TRANSFORMER
- STREET LIGHT STANDARD
- DITCH AND CULVERT
- CONCRETE SIDEWALK
- CURB & DEPRESSED CURB
- ASPHALT SIDEWALK
- CHAINLINK FENCE (1.5m UNLESS OTHERWISE NOTED)
- NOISE BARRIER (3.0m UNLESS OTHERWISE NOTED)
- DECORATIVE FENCE (SEE LANDSCAPE DWGS FOR DETAIL)
- CONSTRUCTION FENCE
- POST AND RAIL FENCE
- PHASING LIMITS
- PROPERTY BOUNDARY
- OVERLAND FLOW DIRECTION
- EXTERNAL OVERLAND FLOW DIRECTION
- STREET CATCHBASIN WITH OVERLAND
- EMERGENCY OVERLAND FLOW DIRECTION
- TACTILE WALKING SURFACE INDICATOR
- (AS PER CITY OF OTTAWA STD. SC6, SC7, SC7.1, SC7.2, SC7.3)
- CB/MH EQUIPPED WITH ICD
- CROSSING LABEL AND LOCATION
- WATER METER
- REMOTE WATER METER
- FIREWALL



NOT FOR CONSTRUCTION

No.	BY	DATE	DESCRIPTION
6	S.L.M.	23-10-06	ISSUED FOR TENDER
5	S.L.M.	23-09-22	ISSUED FOR TENDER
4	S.L.M.	23-09-06	ISSUED FOR TENDER
3	S.L.M.	23-06-30	3RD SUBMISSION

TOPOGRAPHIC INFORMATION
 TOPOGRAPHIC INFORMATION PROVIDED BY STANTEC GEOMATICS LTD., PROJECT No. 161614291-111, DATED MARCH 1, 2022

SITE PLAN INFORMATION
 SITE PLAN PROVIDED BY SRN ARCHITECTS LTD., PROJECT No. S21001, DATED OCTOBER 5, 2023

LEGAL INFORMATION
 CALCULATED DRAFT PLAN PROVIDED BY STANTEC GEOMATICS LTD., PROJECT No. 161614291-131, DATED AUGUST 9, 2023

BENCH MARK
 ELEVATIONS ARE REFERRED TO THE CANADIAN GEODETIC VERTICAL DATUM (CGVD-1928:1978) AND ARE DERIVED FROM BENCHMARK MONUMENT No. 196530071*, HAVING A PUBLISHED ELEVATION OF 99.742 METRES

MINTO COMMUNITIES INC.
 BARRHAVEN TOWN CENTRE
 GLENROY GILBERT DRIVE RIOCAN AVENUE & CHAPMAN MILLS DRIVE EXTENSION

DSEL
 120 Ier Road Unit 103
 Stittsville, Ontario, K2S 1E9
 Tel. (613) 836-0856
 Fax. (613) 836-7183
 www.DSEL.ca

Ottawa
 110 Laurier Ave W
 Ottawa, Ontario, K1P 1J1
 Tel. (613) 580-2400
 www.Ottawa.ca

PLAN AND PROFILE OF
GLENROY GILBERT DRIVE
 (STA 0+000.000 TO STA 0+240.000)

DRAWN BY: AM	CHECKED BY: BC	PROJECT No.	15-816
DESIGNED BY: BC	CHECKED BY: SM	SHEET No.	6

SCALE: HORZ: 1:500
 VERT: 1:50

TOP OF WATERMAIN	97.865 98.288 97.831 97.815	97.724 97.786	97.768 97.725 97.623	97.623 97.723	97.623 97.623	97.623 97.623	97.423	97.331 97.300	97.002 96.977 96.970 97.044 97.170 97.100 97.170 97.210 97.100 97.100 97.100 97.100	97.230 97.084 96.819	TOP OF WATERMAIN
SANITARY INVERT											SANITARY INVERT
STORM INVERT		3000 PVC STM 30.0 @ 0.35% SDR-35 NE 97.475		4500 CONC STM 85.0 @ 0.25% 65-D		5250 CONC STM 68.0 @ 0.45% 65-D			2000 PVC SAN 118.0 @ 0.40% SDR-15 SW 96.529 NE 96.529 EX. 2000 SAN		STORM INVERT
PROPOSED GRADES	100.459 100.331 100.250	100.282 100.256	100.436 100.423 100.404								PROPOSED GRADES
CENTERLINE CHAINAGE	0+000.000 0+100.000 0+200.000	0+104.070 0+109.665 0+120.000	0+130.377 0+134.894 0+140.000		0+129.227 0+131.227	0+140.000		0+158.477 0+160.000 0+162.359	0+174.882 0+180.000 0+186.235 0+194.988 0+200.000 0+200.000 0+200.000 0+207.413	0+217.413 0+220.000	CENTERLINE CHAINAGE

CITY PLAN No. 18822
 CITY FILE No. D07-12-22-0104