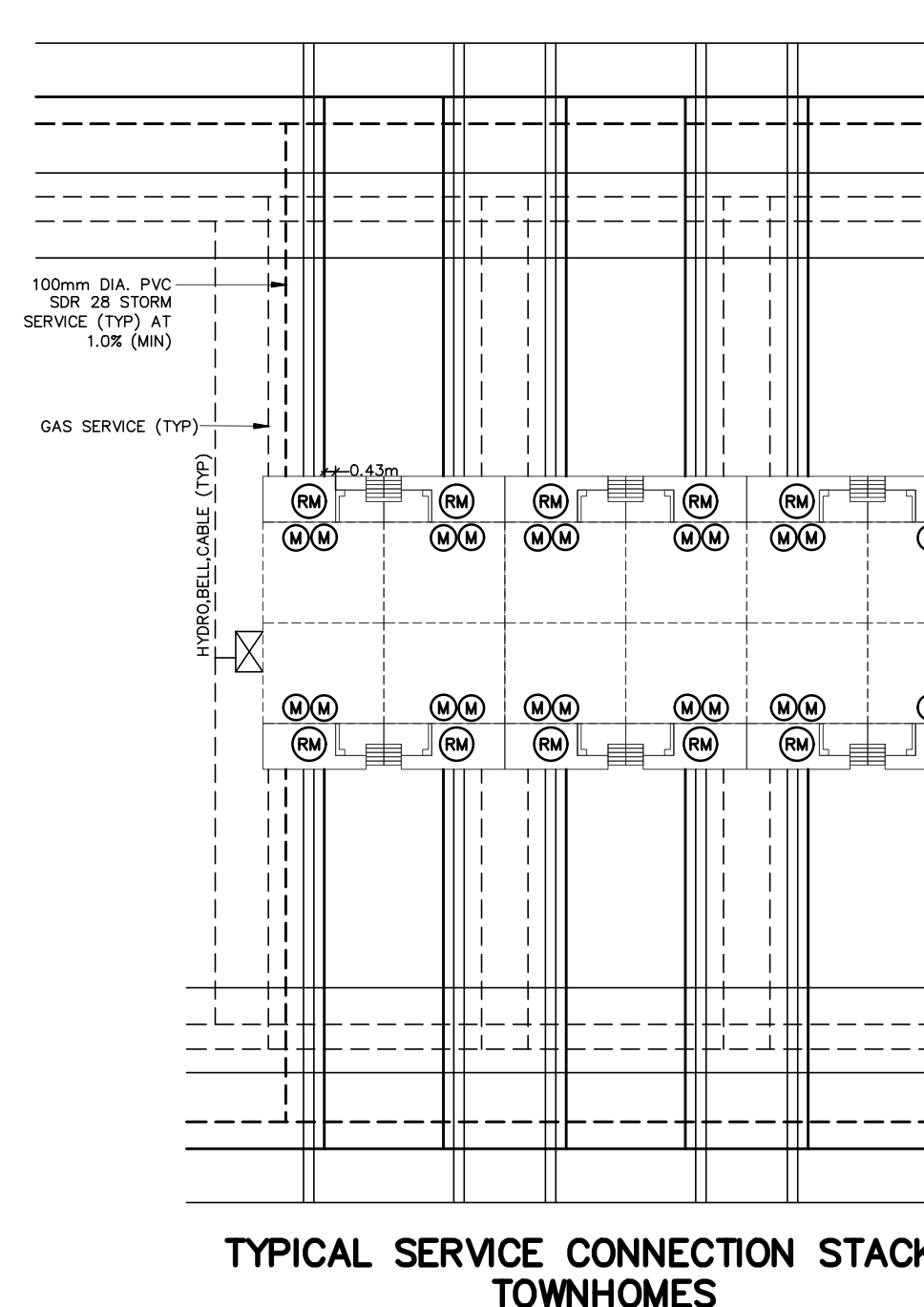
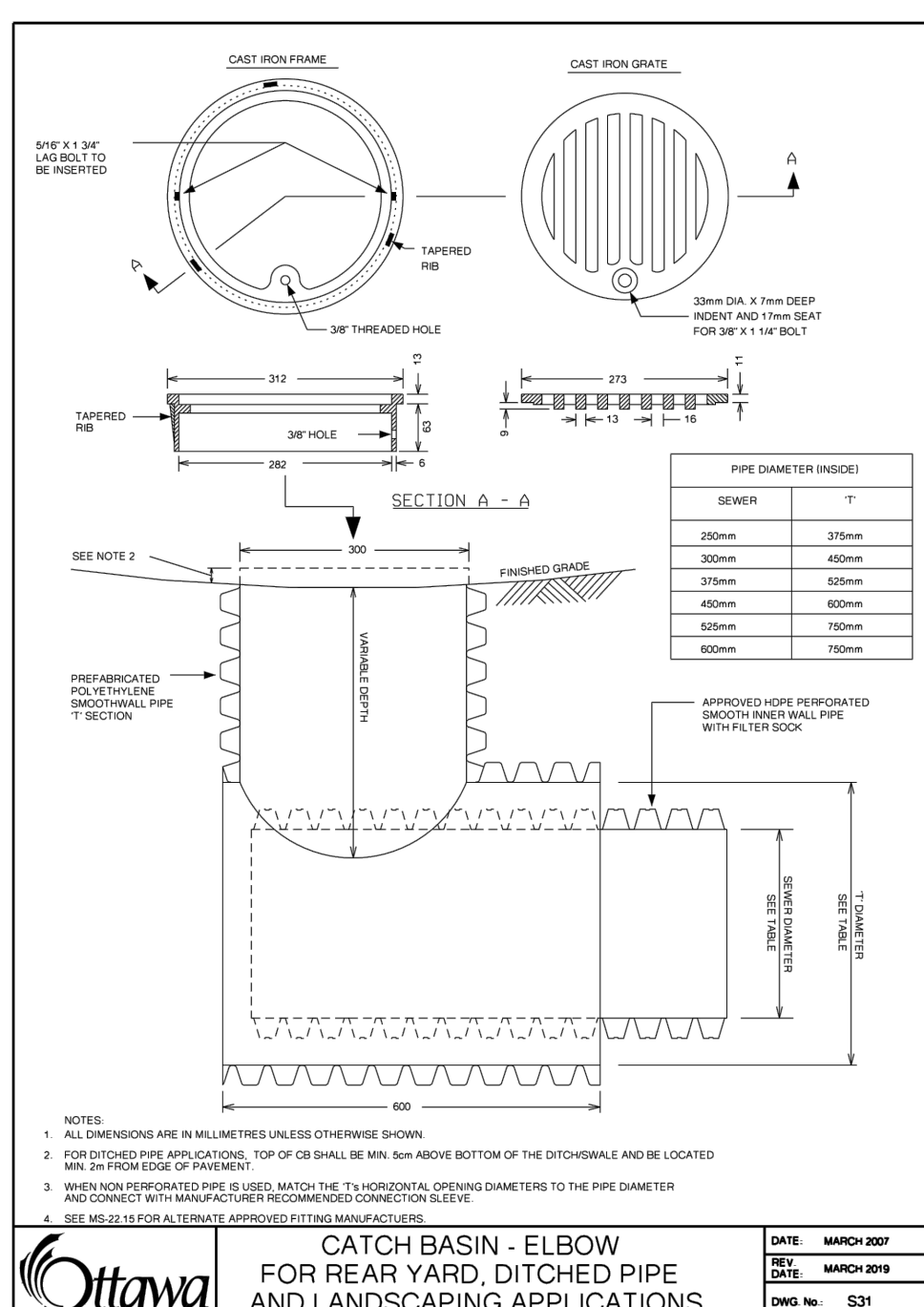
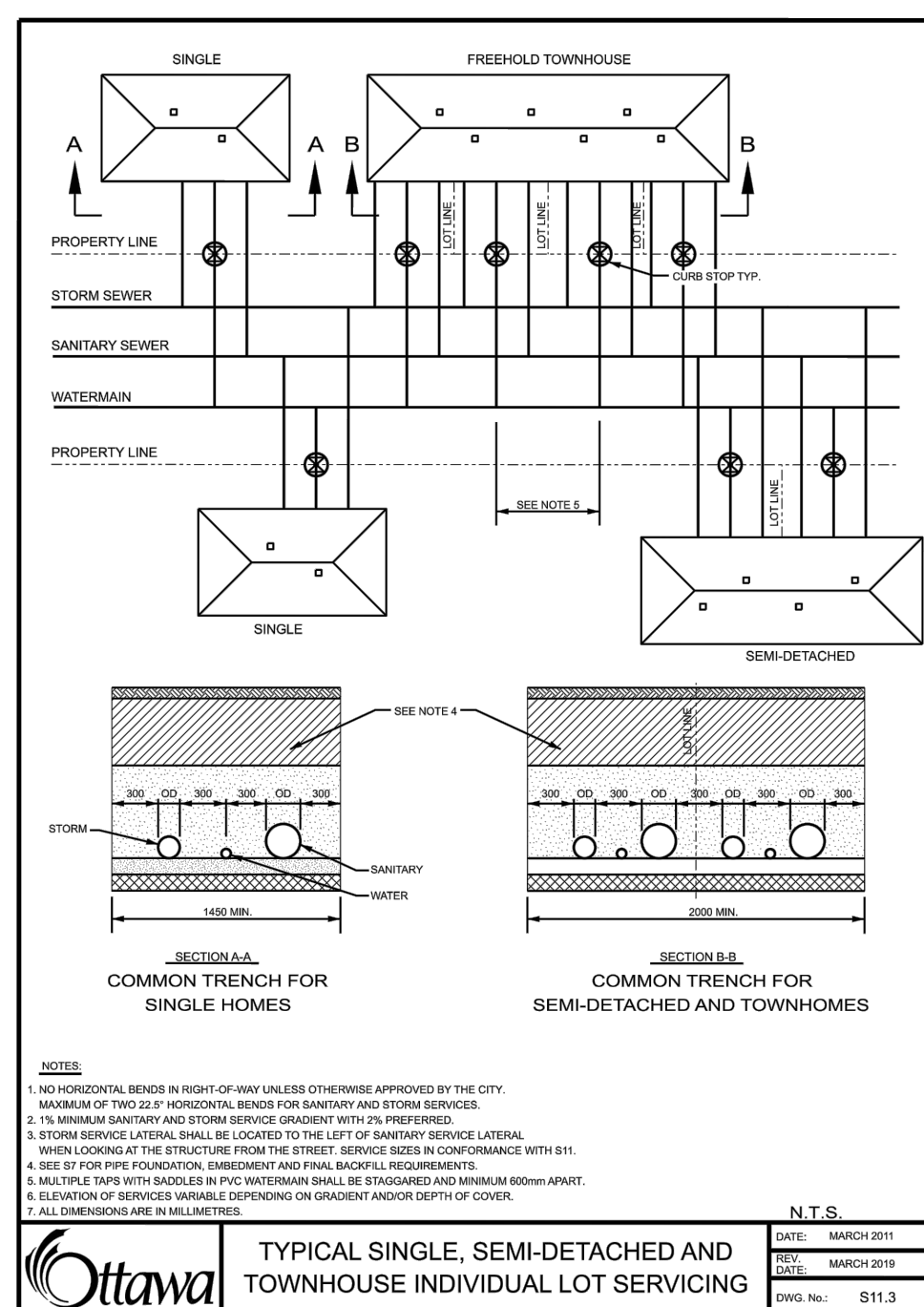
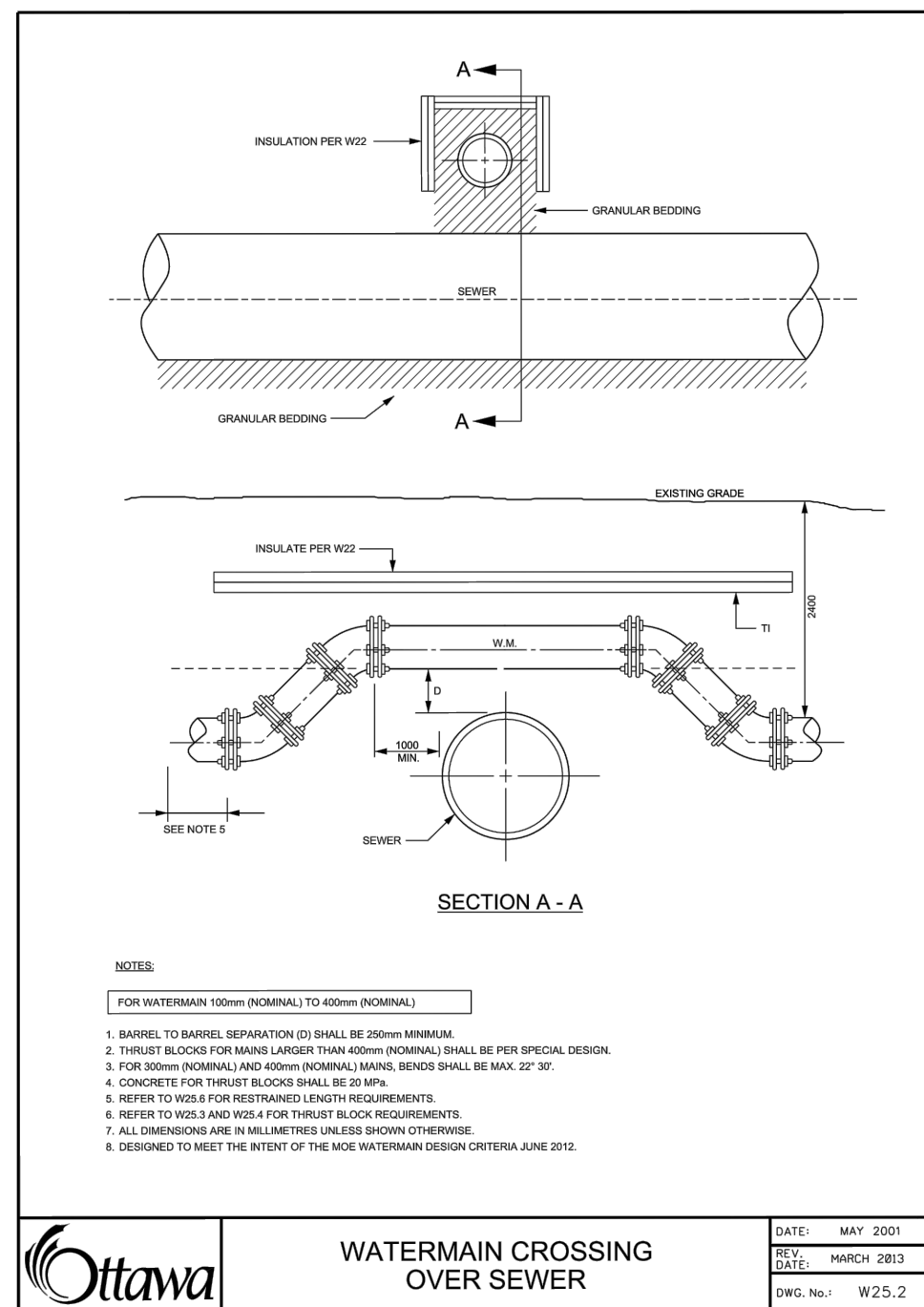


CROSSINGS TABLE							
CROSS NUMBER	DIAMETER TOP	DIAMETER BOTTOM	INVERT TOP	OBVERT BOTTOM	TYPE TOP	TYPE BOTTOM	CLEARANCE (m)
1	1500	2000	96.91	96.61	Watermain	SanitaryMain	0.30
2	1500	2000	96.42	94.94	Watermain	SanitaryMain	1.48
3	1500	3750	96.43	95.90	Watermain	StormMain	0.53
4	500	2000	97.23	96.12	Watermain	SanitaryMain	1.11
5	1500	2000	95.77	95.39	Watermain	SanitaryMain	0.38
6	1500	2000	92.99	91.54	Watermain	SanitaryMain	1.45
7	4500	1500	92.99	92.49	StormMain	Watermain	0.50
8	1500	2000	93.40	93.05	Watermain	SanitaryMain	0.35
9	500	2000	93.02	91.71	Watermain	SanitaryMain	1.31
11	2000	3000	98.03	97.78	Watermain	StormMain	0.25
12	1500	2000	94.43	92.72	Watermain	SanitaryMain	1.71
13	1500	6750	94.46	94.00	Watermain	StormMain	0.46
14	1500	2000	95.30	93.98	Watermain	SanitaryMain	1.32
15	1500	2000	94.65	93.10	Watermain	SanitaryMain	1.55
16	1500	4500	94.50	93.92	Watermain	StormMain	0.58
17	1500	3750	95.66	95.36	Watermain	SanitaryMain	0.30
18	1500	2500	91.89	91.28	Watermain	SanitaryMain	0.61
19	1500	2000	92.91	91.62	Watermain	SanitaryMain	1.29
20	2000	1500	92.25	91.37	Watermain	SanitaryMain	0.88
21	6750	1500	92.76	92.25	StormMain	Watermain	0.51
22	1500	2000	97.01	96.01	Watermain	SanitaryMain	1.00
23	1500	5250	97.18	96.93	Watermain	StormMain	0.25
24	1500	4500	98.00	97.66	Watermain	StormMain	0.34
25	1500	2000	97.91	96.82	Watermain	SanitaryMain	1.09
26	1500	2000	97.71	97.15	Watermain	SanitaryMain	0.56
27	1500	2000	97.55	96.66	Watermain	SanitaryMain	0.89
28	1500	3000	97.55	97.27	Watermain	StormMain	0.28
29	1500	2000	97.62	96.91	Watermain	SanitaryMain	0.71
30	1500	2000	98.18	97.21	Watermain	SanitaryMain	0.98
31	1500	3000	98.18	97.88	Watermain	StormMain	0.30
32	3000	2000	96.96	96.29	StormMain	Watermain	0.67
33	3000	2000	97.57	97.22	StormMain	SanitaryMain	0.35
34	5250	2000	96.39	95.91	StormMain	SanitaryMain	0.48
35	7500	2500	92.65	91.35	StormMain	SanitaryMain	1.30
36	6750	2000	92.76	91.83	StormMain	SanitaryMain	0.93
37	7500	2000	93.21	92.68	StormMain	SanitaryMain	0.53
38	4500	2000	92.46	92.46	StormMain	SanitaryMain	0.01
39	6750	2000	93.33	92.90	StormMain	SanitaryMain	0.43
40	4500	2000	93.46	92.94	StormMain	SanitaryMain	0.52
41	6000	2000	94.65	94.17	StormMain	SanitaryMain	0.48
42	3750	2000	95.35	94.57	StormMain	SanitaryMain	0.78
43	3000	2000	96.11	94.79	StormMain	SanitaryMain	1.32
44	3000	2000	96.20	95.79	StormMain	SanitaryMain	0.41
45	6000	4500	94.49	93.91	StormMain	StormMain	0.58
46	3000	3750	96.10	95.65	StormMain	StormMain	0.45
47	7500	1500	92.63	92.13	StormMain	Watermain	0.50
48	2000	2000	94.32	94.02	Watermain	SanitaryMain	0.30
49	6000	1500	94.67	94.17	Watermain	StormMain	0.50
50	1500	2000	97.39	96.68	Watermain	SanitaryMain	0.71
51	1500	3000	96.87	96.58	Watermain	StormMain	0.29
52	1500	2000	97.04	95.90	Watermain	SanitaryMain	1.14



**NOT FOR CONSTRUCTION**

6	S.L.M.	23-10-06	4TH SUBMISSION
5	S.L.M.	23-09-22	ISSUED FOR TENDER
4	S.L.M.	23-09-06	ISSUED FOR TENDER
3	S.L.M.	23-06-30	3RD SUBMISSION

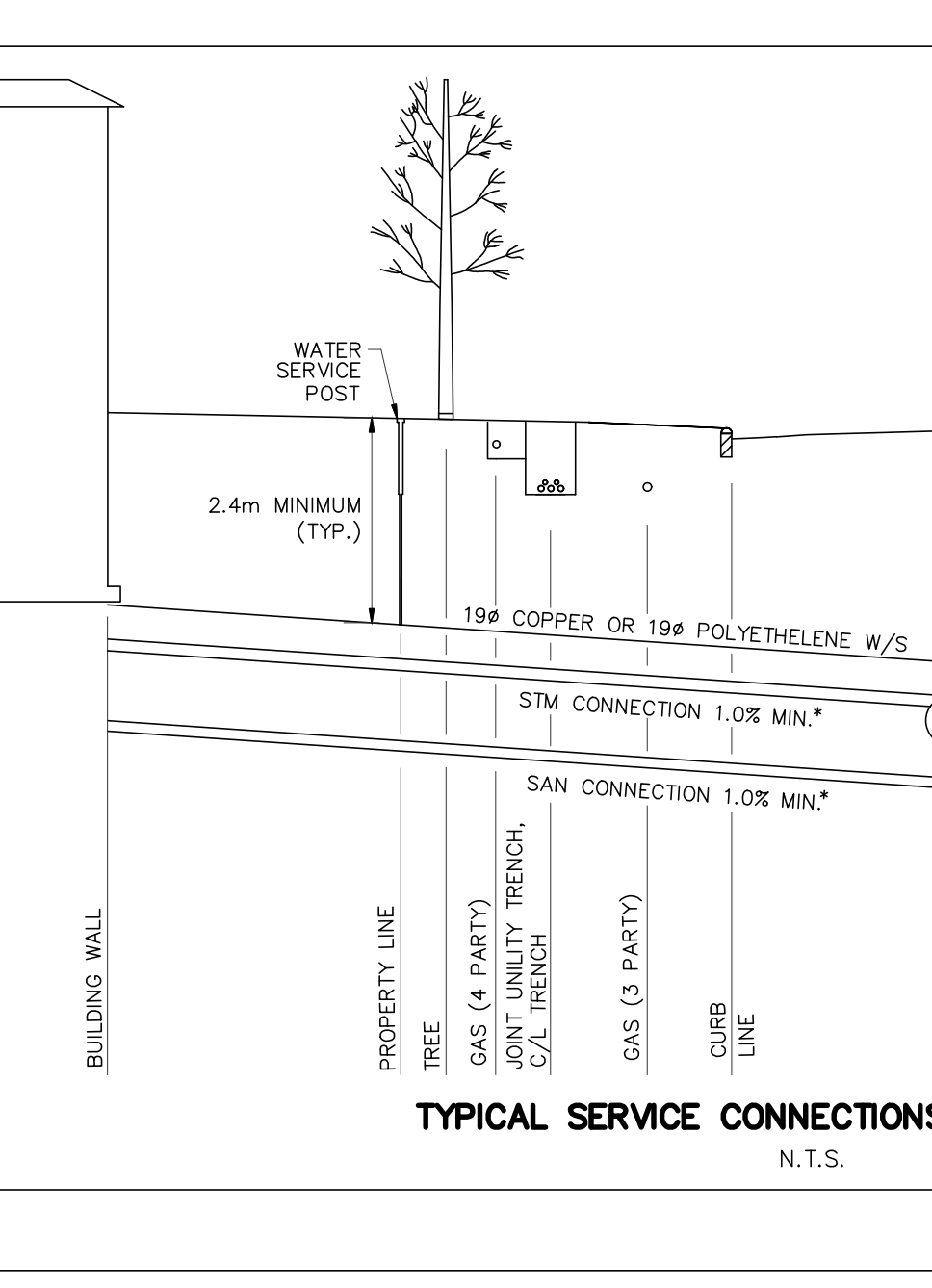
No. BY DATE DESCRIPTION

**TOPOGRAPHIC INFORMATION**  
 TOPOGRAPHIC INFORMATION PROVIDED BY STANTEC GEOMATICS LTD., PROJECT No. 161614291-111, DATED MARCH 1, 2022.

**SITE PLAN INFORMATION**  
 SITE PLAN PROVIDED BY SRN ARCHITECTS LTD., PROJECT No. S21001, DATED OCTOBER 5, 2023.

**LEGAL INFORMATION**  
 CALCULATED DRAFT PLAN PROVIDED BY STANTEC GEOMATICS LTD., PROJECT No. 161614291-131, DATED AUGUST 9, 2023.

**BENCH MARK**  
 ELEVATIONS ARE REFERRED TO THE CANADIAN GEODETIC VERTICAL DATUM (CGVD-1928:1978) AND ARE DERIVED FROM BENCHMARK MONUMENT No. 196530071\*, HAVING A PUBLISHED ELEVATION OF 99.742 METRES.

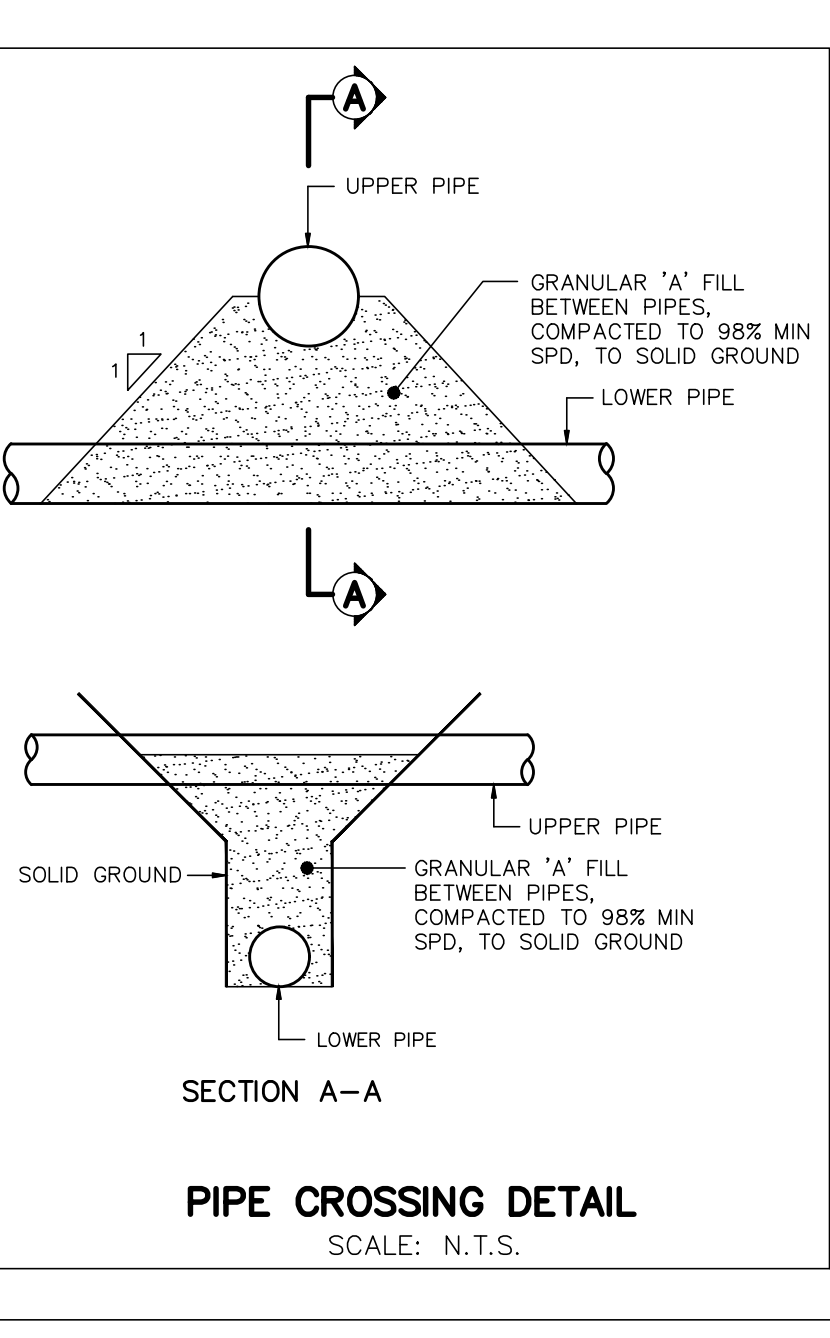
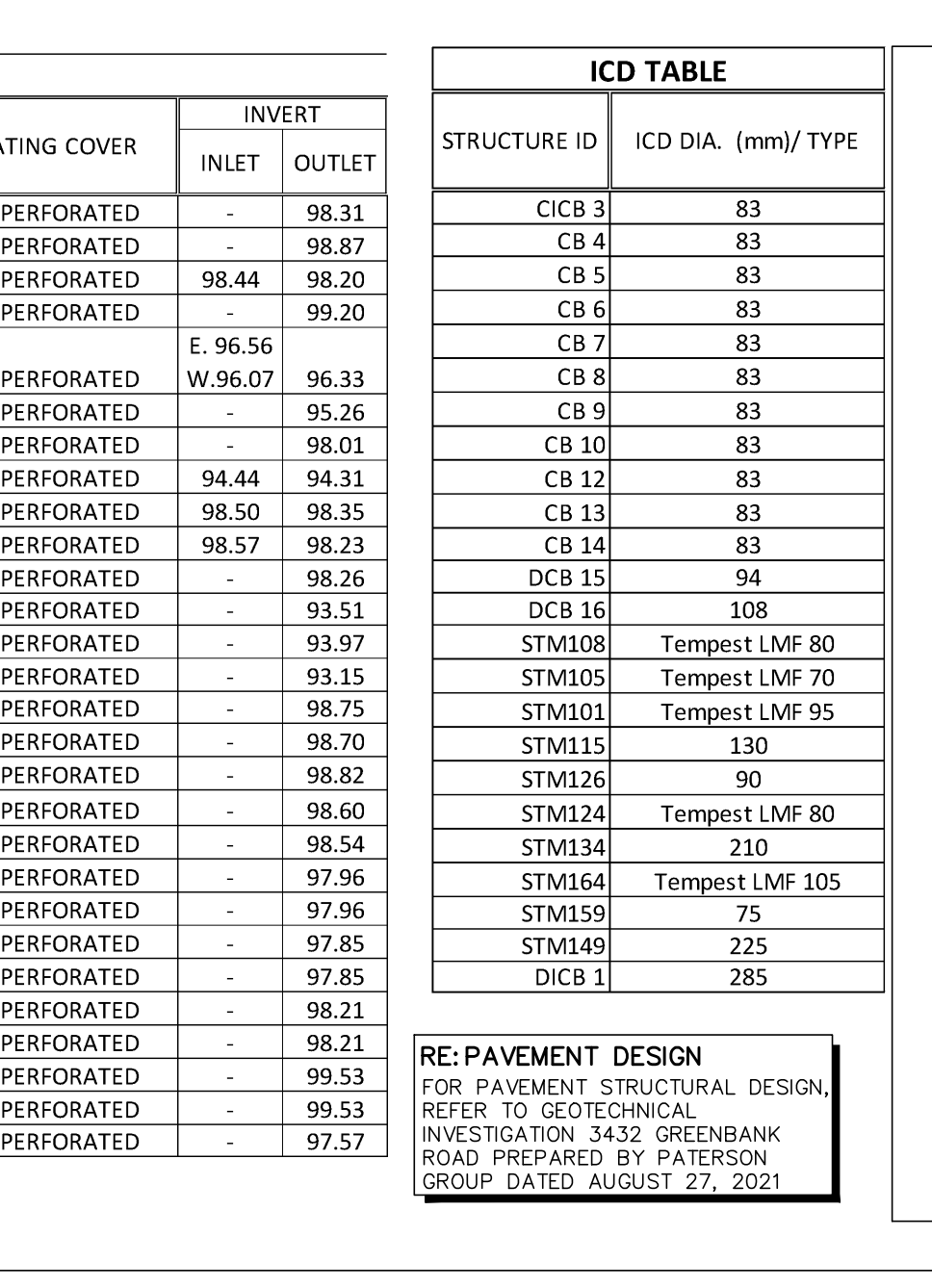


**CATCH BASIN TABLE**

STREET NAME	CATCHBASIN ID	OUTLET PIPE		TOP OF GRATE	GRATING COVER	INVERT	
		DIA. (mm)	LENGTH (m)			INLET	OUTLET
BLOCK A	CB 19	200	PVC 3.13	1.38	99.69	S19 PERFORATED	- 98.31
BLOCK A	CB 17	200	PVC 6.25	1.38	100.25	S19 PERFORATED	- 98.87
BLOCK A	CB 28	250	PVC 3.86	1.38	99.58	S19 PERFORATED	98.44 98.20
BLOCK A	CB 27	200	PVC 5.13	1.38	100.58	S19 PERFORATED	- 99.20
BLOCK B	CB 22	250	PVC 15.44	1.74	98.07	S19 PERFORATED	E. 96.56 96.33
BLOCK B	DCB 23	200	PVC 2.13	1.38	96.64	S19 PERFORATED	- 95.26
BLOCK B	CB 24	200	PVC 0.75	1.38	99.39	S19 PERFORATED	- 98.01
BLOCK B	CB 25	250	PVC 9.78	1.38	95.69	S19 PERFORATED	94.44 94.31
BLOCK B	CB 26	250	PVC 9.21	1.38	99.73	S19 PERFORATED	98.50 98.35
BLOCK B	CB 30	200	PVC 13.35	1.38	99.61	S19 PERFORATED	98.57 98.23
BLOCK B	CB 31	200	PVC 10.28	1.38	99.64	S19 PERFORATED	- 98.26
BLOCK B	CB 21	200	PVC 2.67	1.38	94.89	S19 PERFORATED	- 93.51
BLOCK B	CB 32	200	PVC 2.81	1.38	95.35	S19 PERFORATED	- 93.97
FUT. CHAPMAN MILLS	DICB 1	200	PVC 2.31	1.38	94.53	S19 PERFORATED	- 93.15
GLENROY GILBERT DRIVE	CB 9	200	PVC 1.35	1.38	100.13	S19 PERFORATED	- 98.75
GLENROY GILBERT DRIVE	CB 10	200	PVC 5.25	1.38	100.08	S19 PERFORATED	- 98.70
GLENROY GILBERT DRIVE	CB 12	200	PVC 5.25	1.38	100.20	S19 PERFORATED	- 98.82
GLENROY GILBERT DRIVE	CB 13	200	PVC 1.26	1.38	99.98	S19 PERFORATED	- 98.60
GLENROY GILBERT DRIVE	CB 14	200	PVC 5.24	1.38	99.92	S19 PERFORATED	- 98.54
GLENROY GILBERT DRIVE	DCB 15	250	PVC 1.25	1.38	99.34	S19 PERFORATED	- 97.96
GLENROY GILBERT DRIVE	DCB 16	250	PVC 5.25	1.38	99.34	S19 PERFORATED	- 97.96
RIOCAN AVENUE	FUT. CB 3	200	PVC 2.63	1.38	99.23	S19 PERFORATED	- 97.85
RIOCAN AVENUE	FUT. CB 4	200	PVC 6.48	1.38	99.23	S19 PERFORATED	- 97.85
RIOCAN AVENUE	CB 5	200	PVC 1.31	1.38	99.59	S19 PERFORATED	- 98.21
RIOCAN AVENUE	CB 6	200	PVC 5.28	1.38	99.59	S19 PERFORATED	- 98.21
RIOCAN AVENUE	CB 7	200	PVC 2.72	1.38	100.91	S19 PERFORATED	- 99.53
RIOCAN AVENUE	CB 8	200	PVC 5.60	1.38	100.91	S19 PERFORATED	- 99.53
RIOCAN AVENUE	CB 29	200	PVC 9.08	1.38	98.95	S19 PERFORATED	- 97.57

**ICD TABLE**

STRUCTURE ID	ICD DIA. (mm)/ TYPE
CICB 3	83
CB 4	83
CB 5	83
CB 6	83
CB 7	83
CB 8	83
CB 9	83
CB 10	83
CB 12	83
CB 13	83
CB 14	83
DCB 15	94
DCB 16	108
STM108	Tempeset LMF 80
STM105	Tempeset LMF 70
STM101	Tempeset LMF 95
STM115	130
STM126	90
STM124	Tempeset LMF 80
STM134	210
STM164	Tempeset LMF 105
STM159	75
STM149	225
DICB 1	285



**MINTO COMMUNITIES INC.**

**BARRHAVEN TOWN CENTRE STAGE 1**

**DSEL**  
 120 Ider Road Unit 103  
 Slittsville, Ontario, K2S 1E9  
 Tel. (613) 836-0856  
 Fax. (613) 836-7183  
 www.DSEL.ca

**PROFESSIONAL ENGINEER**  
 S.L. MERRICK  
 100166523  
 2025-10-04  
 PROVINCE OF ONTARIO

110 Laurier Ave W  
 Ottawa, Ontario, K1P 1J1  
 Tel. (613) 580-2400  
 www.Ottawa.ca

**DETAILS AND TABLE**

DRAWN BY: AM CHECKED BY: BC PROJECT No. 15-816  
 DESIGNED BY: BC CHECKED BY: SM SHEET No. 2  
 N.T.S.