

LEGEND / SYMBOL

- EXISTING TREE TO BE RETAINED
- EXISTING TREE TO BE REMOVED
- PROPOSED DECIDUOUS TREE
- PROPOSED CONIFEROUS TREE
- PROPOSED SHRUBS / PERENNIALS / GRASSES
- PROPOSED REFORESTATION
- UNIT PAVING
- PROPOSED DECORATIVE AGGREGATE
- PROPOSED P.C CONCRETE
- PROPOSED (TRAFFIC) BOLLARD
- PROPOSED BICYCLE RACK
- PROPOSED RAISED PAVEMENT TRANSITION
- PROPOSED TREE PROTECTION BARRIER
- PROPOSED WALKWAY LIGHT BOLLARD
- PROPOSED PICKLEBALL COURT LIGHT STANDARD

GENERAL NOTES

- This drawing shall be read in conjunction with all relevant Architectural, Engineering and related Drawings and Documents.
- Refer to Engineering Drawings for Grading and Servicing.
- Refer to Architectural Drawings for Site layout.
- Contractor shall provide the location(s) of all services/utilities by consulting Municipal Authorities and Utility companies and shall be responsible for adequate protection from damage during construction.
- Plant material shall be No. 1 Grade and shall comply with the Metro Guide Specifications For Nursery Stock (latest edition), published by the Canadian Nursery Trades Association.
- Plant Material locations are Schematic / Approximate only. Contractor shall stake out locations on site prior to work.
- Contractor shall guarantee all plant material for a period of one (1) full year from the date of final acceptance.
- Perennials and Ornamental Grasses shall be planted in a continuous prepared bed of 450mm depth planting soil mix covered over with 75mm depth composted pine mulch to finish grade (NO WEED CONTROL FABRIC), as specified.
- Reinstale all areas damaged or disturbed beyond the limit of Work.
- Plant Material substitutions shall not be permitted without written approval from the Consultant.
- Sod areas to receive 125mm topsoil. Sod shall be No. 1 quality conforming to the Canadian Nursery Sod Growers Specification.
- Provide protection for existing trees to be retained. Install fencing to Critical Root Zone (CRZ) of each tree or groupings of trees (if close together). No excavation, filling, storage of materials, disposal of chemicals or waste, vehicle traffic or other activity which could cause root zone disturbance or compaction, shall take place within the protected area.
- Where limbs of trees are removed to accommodate construction work, they shall be done in accordance with accepted arboricultural practice.
- Where root systems become exposed due to excavation, carefully trim damaged roots and provide temporary mulch until backfill is undertaken. Keep roots moist at all times.
- Construct walls or retaining walls if grades around trees are to be modified. Root feed all existing trees after construction.
- Contractor shall advise Consultant a minimum of 48hrs prior to proceeding landscape work and any required Field Reviews.

REFER TO APPENDIX G OF THE EIS FOR RESTORATION PLANTING IN THIS AREA. 23 DECIDUOUS / CONIFEROUS TREES INCLUDED AS COMPENSATION PLANTINGS

REMOVE DEAD, POOR AND HAZARDOUS EX-TREES AND PLANT REFORESTATION STOCK IN OPEN POCKETS (45% OF TOTAL AREA OF 120 PLANTS) AS DIRECTED BY CONSULTANT.

PLANT MATERIAL SCHEDULE

CODE	BOTANICAL NAME	COMMON NAME	QTY.	SIZE	REMARKS
DECIDUOUS TREES					
AS	AMELANCHIER CANADENSIS	SHADBLOW SERVICEBERRY	7	50mm ht	B&B Single Stem
AFJ	ACER x FRIEMANI JEFFERSONII	AUTUMN BLAZE MAPLE	20	60mm cal	B&B Single Stem
ASa	ACER SACCHARINUM	SILVER MAPLE	3	60mm cal	B&B Single Stem
BE	BETULA ALLEGHANIENSIS	YELLOW BIRCH	3	60mm cal	B&B Single Stem
CC	CARPINUS CAROLINIANA	BLUE BEECH	4	50mm cal	B&B Single Stem
CO	CALYPTROGYNUS	COMMON HICKORY	14	60mm cal	B&B Single Stem
GBA	GINCKGO BILOBA	AUTUMN GOLD	7	60mm cal	B&B Single Stem
GLD	GLEDETIA STRONGII	SHADBLASTER HONEYLOCUST	10	60mm cal	B&B Single Stem
DM	QUERCUS MACROCARPA	BUR OAK	8	60mm cal	B&B Single Stem
QR	QUERCUS RUBRA	RED OAK	7	60mm cal	B&B Single Stem
SR	SYRINGA MICROLETA 'VIORE'	PURPLE SYRIA JAPANESE TREE LILAC	1	50mm ht	B&B Single Stem
TA	TILIA AMERICANA	AMERICAN BASSWOOD	6	60mm cal	B&B Single Stem
TC	TILIA CORDATA	LITTLELEAF LINDEN	6	60mm cal	B&B Single Stem
CONIFEROUS TREES					
PL	PICEA GLAUCA	WHITE SPRUCE	15	180 cm ht	B&B
PR	PINUS RESINOSA	RED PINE	9	180 cm ht	B&B
PS	PINUS STROBUS	WHITE PINE	4	180 cm ht	B&B
SHRUBS					
AC2	AMELANCHIER CANADENSIS	DOWNY SERVICEBERRY	4	100cm ht	potted, multi-stem
AM	ARONIA MELANOCARPA	BLACK CHOKEBERRY	29	50cm ht	potted, 100cm o/c
CAK	CORNUS ALBA 'MADRAS'	DOGWOOD	10	100cm ht	potted, multi-stem
DL	DIERVILLA LANCEOLA	BUSH HONEYBUCKLE	93	50cm ht	potted, 100cm o/c
HAA	HYDRANGEA ARBORESCENS	ANNABELLE HYDRANGEA	9	50cm ht	potted, 100cm o/c
HAG	HYDRANGEA ARBORESCENS	SNOWHILL HYDRANGEA	20	50cm ht	potted, 100cm o/c
GRAN	GRANDEMORA	GRANDEMORA	24	50cm ht	potted, 100cm o/c
JCF	JUNIPERUS CHINENSIS	FAIRWEATHER JUNIPER	39	100cm ht	potted, 100cm o/c
PFY	POTENTILLA FRUTICOSA YELLOW GEM	YELLOW GEM CINQUEFOIL	153	50cm ht	potted, 80cm o/c
PO	PHYSCARPUS OPILOLIDUS	COMMON NINEBARK	35	50cm ht	potted, 100cm o/c
POK	PHYSCARPUS OPILOLIDUS	COPPERTINA NINEBARK	10	50cm ht	potted, 100cm o/c
PKM	PHILAEUS VIRGINICUS	MINNESOTA SNOWFLAKE	103	50cm ht	potted, 100cm o/c
ALP	ALPINE CURRANT	ALPINE CURRANT	40	50cm ht	potted, 100cm o/c
ROSA	ROSA BLANDA	SILVER ROSE	60	50cm ht	potted, 100cm o/c
SNOW	SNOWBERRY	SNOWBERRY	31	50cm ht	potted, 100cm o/c
SPIRA	SPIRAEA BELLIDIFLORA	BIRCHLEAF SPIREA	40	50cm ht	potted, 100cm o/c
SJC	SPIRAEA JAPONICA COCCINEA	DWARF RED FLOWERING SPIREA	77	50cm ht	potted, 100cm o/c
FR	FROEDEL SPIREA	FROEDEL SPIREA	25	50cm ht	potted, 100cm o/c
SJS	SPIRAEA JAPONICA GOLDMOUND	GOLD MOUND SPIREA	70	50cm ht	potted, 100cm o/c
SS	SORBARIA SORBARIA	MADEIRA SPIREA	103	50cm ht	potted, multi-stem
TM	TAXUS MEDIA DENSFORMIS	DENSE YEW	96	50cm ht	potted, multi-stem
VB	VIBURNUM	VIBURNUM	2	100cm ht	potted, multi-stem
WF	WEIGELIA FLORIDA POLKA	POLKA WEIGELIA	44	50cm ht	potted, 100cm o/c
WV	WEIGELIA FLORIDA VARIEGATA	VARIEGATED WEIGELIA	48	50cm ht	potted, 100cm o/c
PERENNIALS					
Ech	ECHINACEA PURPUREA	PURPLE CONEFLOWER	56	15 cm pot	plant 75cm o/c
Hem	HEBERICARUS Hyperion	HYPERION DAYLILY	292	15 cm pot	plant 150cm o/c
Hos	HOSTA Naniamo	HOSTA	80	15 cm pot	plant 80cm o/c
On	Onoclea sensibilis ssp. gracile	WATER THURSTON	30	15 cm pot	plant 80cm o/c
Rud	RUBROCKIA laetis	CUTLEAF CONEFLOWER	56	15 cm pot	plant 80cm o/c
Sa	SALVIA nemoralis May Light	MAY LIGHT MEADOWSAGE	50	15 cm pot	plant 80cm o/c
GRASSES / SEDGES					
Cal	CALAMAGROSTIS x acutiora	KARL FOERSTER REED GRASS	268	15cm pot	plant 75cm o/c
Fes	FESTUCA ovina	TURTLE HAIR GRASS	322	15 cm pot	plant 75cm o/c
Fls	FLUXUS meyeri	AMERICAN BLUE FLAG	220	15cm pot	plant 150cm o/c
Pv	PANICUM virgatum	SWITCH GRASS	177	15cm pot	plant 75cm o/c
Sgr	SPOROBOLUS heteropus	RODAN GRASS	18	15cm pot	plant 75cm o/c
Spp	SPOROBOLUS heteropus	PRAIRIE DROPSIDE	88	15cm pot	plant 75cm o/c

REFORESTATION / NATURALIZATION PLANT MATERIAL SCHEDULE

CODE	BOTANICAL NAME	COMMON NAME	QTY.	SIZE	REMARKS
DECIDUOUS TREES (plant @ 250cm spacing in areas directed by Consultant)					
ACER	ACER RUBRUM	RED MAPLE	5	250cm ht	25 gal. pot, single stem.
ACER	ACER SACCHARINUM	SILVER MAPLE	9	250cm ht	25 gal. pot, single stem
ACER	ACER SACCHARINUM	RUGED MAPLE	5	250cm ht	25 gal. pot, single stem
AESC	AESCULUS GLABRA	OHIO BUCKEYE	5	250cm ht	25 gal. pot, single stem
CARY	CARYA CORDIFOLIA	BITTERNUT HICKORY	7	250cm ht	25 gal. pot, single stem
JUGL	JUGLANS NIGRA	BLACK WALNUT	9	250cm ht	25 gal. pot, single stem
POP	POPULUS BALSAMIFERA	BALSAM POPLAR	7	250cm ht	25 gal. pot, single stem
POP	POPULUS GRANDIDENTATA	LARGE TOOTH ASPEN	7	250cm ht	25 gal. pot, single stem
PRUN	PRUNUS SEROTINA	BLACK CHERRY	5	250cm ht	25 gal. pot, single stem
QUER	QUERCUS MACROCARPA	BUR OAK	5	250cm ht	25 gal. pot, single stem
QUER	QUERCUS RUBRA	RED OAK	7	250cm ht	25 gal. pot, single stem
TILIA	TILIA AMERICANA	AMERICAN BASSWOOD	7	250cm ht	25 gal. pot, single stem
CONIFEROUS TREES (plant @ 250cm spacing in areas directed by Consultant)					
ABIES	ABIES BALSAMICA	BALSAM FIR	7	80cm ht	potted.
LARIX	LARIX LARICINA	TIMBERLARK	7	80cm ht	potted.
PICEA	PICEA GLAUCA	WHITE SPRUCE	5	80cm ht	potted.
PINUS	PINUS STROBUS	WHITE PINE	6	80cm ht	potted.
THUJA	THUJA OCCIDENTALIS	EASTERN WHITE CEDAR	17	80cm ht	potted.

SCHEDULE OF EXISTING TREES

(Inventory conducted July 27, 2022)

CODE	SPECIES	CONDITION	DBH ¹ (cm)	OWNERSHIP	ACTION NOTES
1	Gleditsia triacanthos Honeylocust	Good	8	City	Protect / RETAIN
2	Gleditsia triacanthos Honeylocust	Good	11	City	Protect / RETAIN
3	Gleditsia triacanthos Honeylocust	Good	8	City	Protect / RETAIN
4	Gleditsia triacanthos Honeylocust	Good	9	City	Protect / RETAIN
5	Gleditsia triacanthos Honeylocust	Good	9	City	Protect / RETAIN
6	Acer saccharinum Silver maple	Good	15	City	Development conflict / Grading impact / trees planted approx. 50cm below municipal sidewalk grade / REMOVED TO DATE
7	Acer saccharinum Silver maple	Good	13	City	Development conflict / Grading impact / trees planted approx. 50cm below municipal sidewalk grade / REMOVED TO DATE
8	Acer saccharinum Silver maple	Good	13	City	Development conflict / Grading impact / trees planted approx. 50cm below municipal sidewalk grade / REMOVED TO DATE
9	Gleditsia triacanthos Honeylocust	Good	10	City	Development conflict / Grading impact / trees planted approx. 50cm below municipal sidewalk grade / REMOVED TO DATE
10	Gleditsia triacanthos Honeylocust	Good	10	City	Development conflict / Grading impact / trees planted approx. 50cm below municipal sidewalk grade / REMOVED TO DATE
11	Gleditsia triacanthos Honeylocust	Good	10	City	Development conflict / Grading impact / trees planted approx. 50cm below municipal sidewalk grade / REMOVED TO DATE

¹DBH Diameter at breast height, or 1.4m from grade (unless otherwise noted).

NOTES:

- In conformance with the guidelines outlined in the City of Ottawa Protocol for Wildlife Protection During Construction, no clearing of vegetation shall occur between April 15 and August 15, unless a qualified biologist has determined that no bird nesting is occurring within 5 days prior to clearing. A pre-clearing survey for active stick nests and cavity nests shall also be conducted between April 1 and April 15 in order to identify and protect early nesting owls and raptors.
- A permit is required for any removal of trees, 10cm DBH or greater.

FOR APPROVAL ONLY

no.	date	revision
10	SEPT 1/23	RE-ISSUE FOR SPA AMENDMENT(2)
9	JUNE 20/22	RE-ISSUE FOR SPA AMENDMENT
8	DEC 22/22	ISSUE FOR SPA AMENDMENT
7	MAR 23/22	RE-ISSUE FOR SPA
6	MAR 16/22	ISSUE INFORMATION ONLY
5	AUG 27/21	RE-ISSUE FOR SPA
4	SEPT 17/20	ISSUE FOR UORP
3	MAY 25/20	RE-ISSUE FOR SITE PLAN APPROVAL
2	NOV 15/19	ISSUE FOR SITE PLAN APPROVAL
1	AUG 23/19	ISSUE FOR UORP

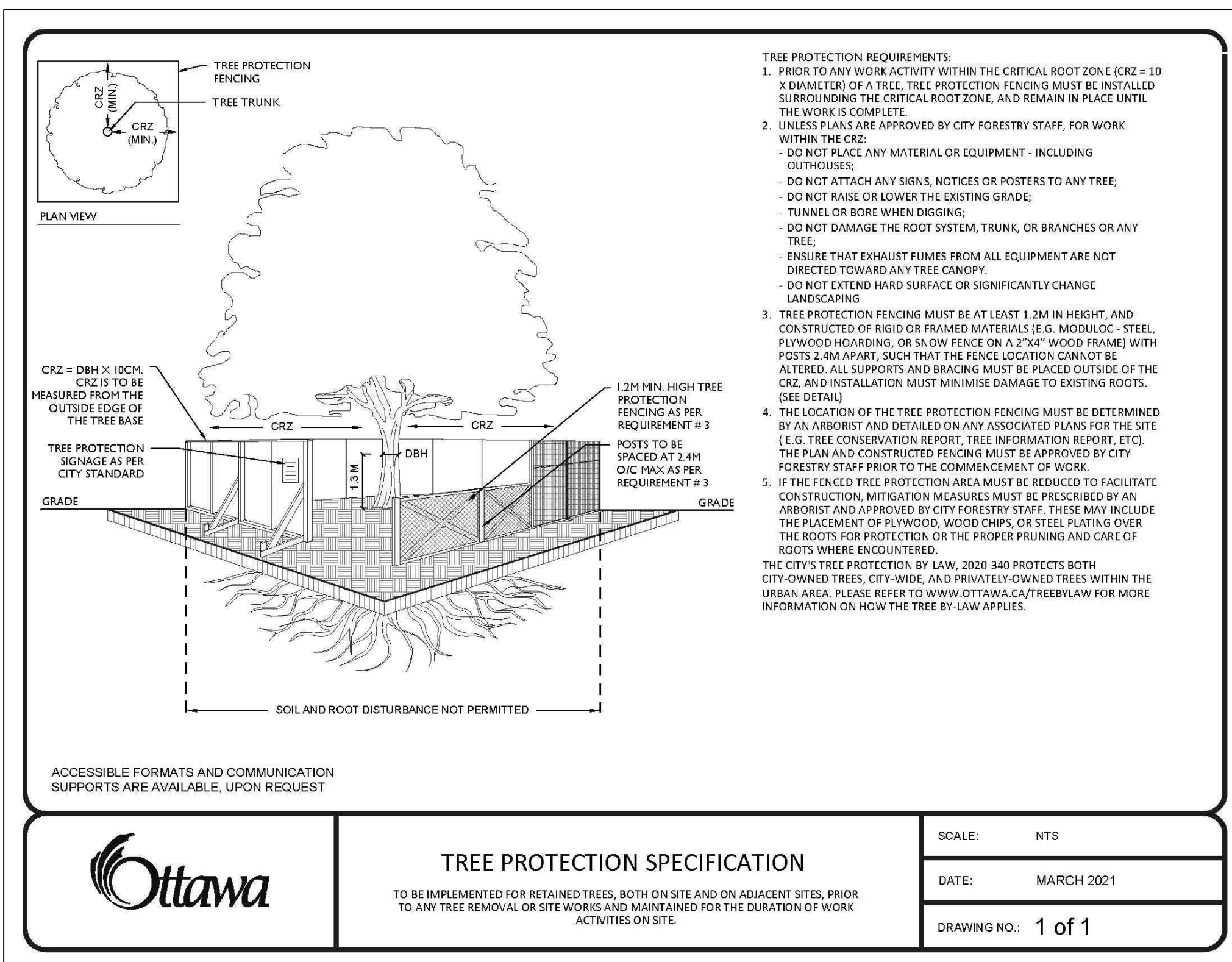
Contractor shall check and verify all dimensions on site and report all errors and/or omissions to the Consultant.
Work to be done in accordance with all applicable codes and by laws.
Do not scale Drawing.
This Drawing shall not be used for construction until signed by the Consultant.
Copyright reserved. This Drawing is the exclusive property of Levstek Consultants Inc. and shall not be used without consent.

Client: **WELLINGS OF STITTSVILLE PHASE 2 / 3**
20 CEDAROW COURT

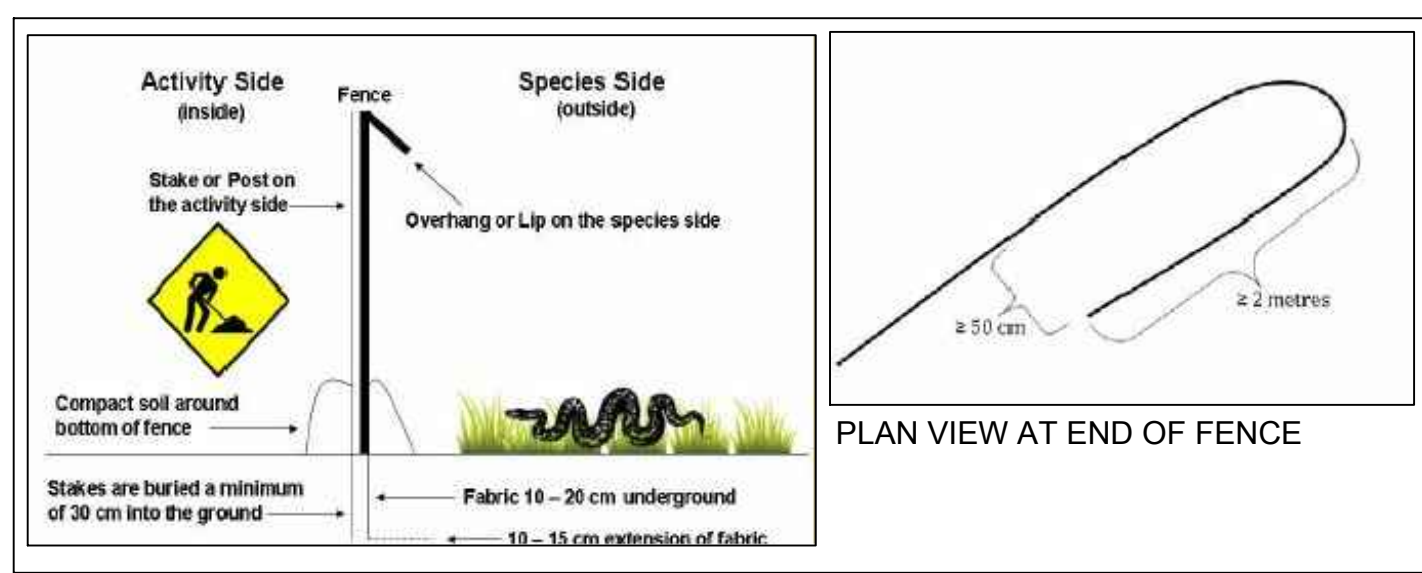
Drawing Title: **LANDSCAPE PLAN**

Scale: **1:300** Project No: **1164** Drawing No: **L1.01**

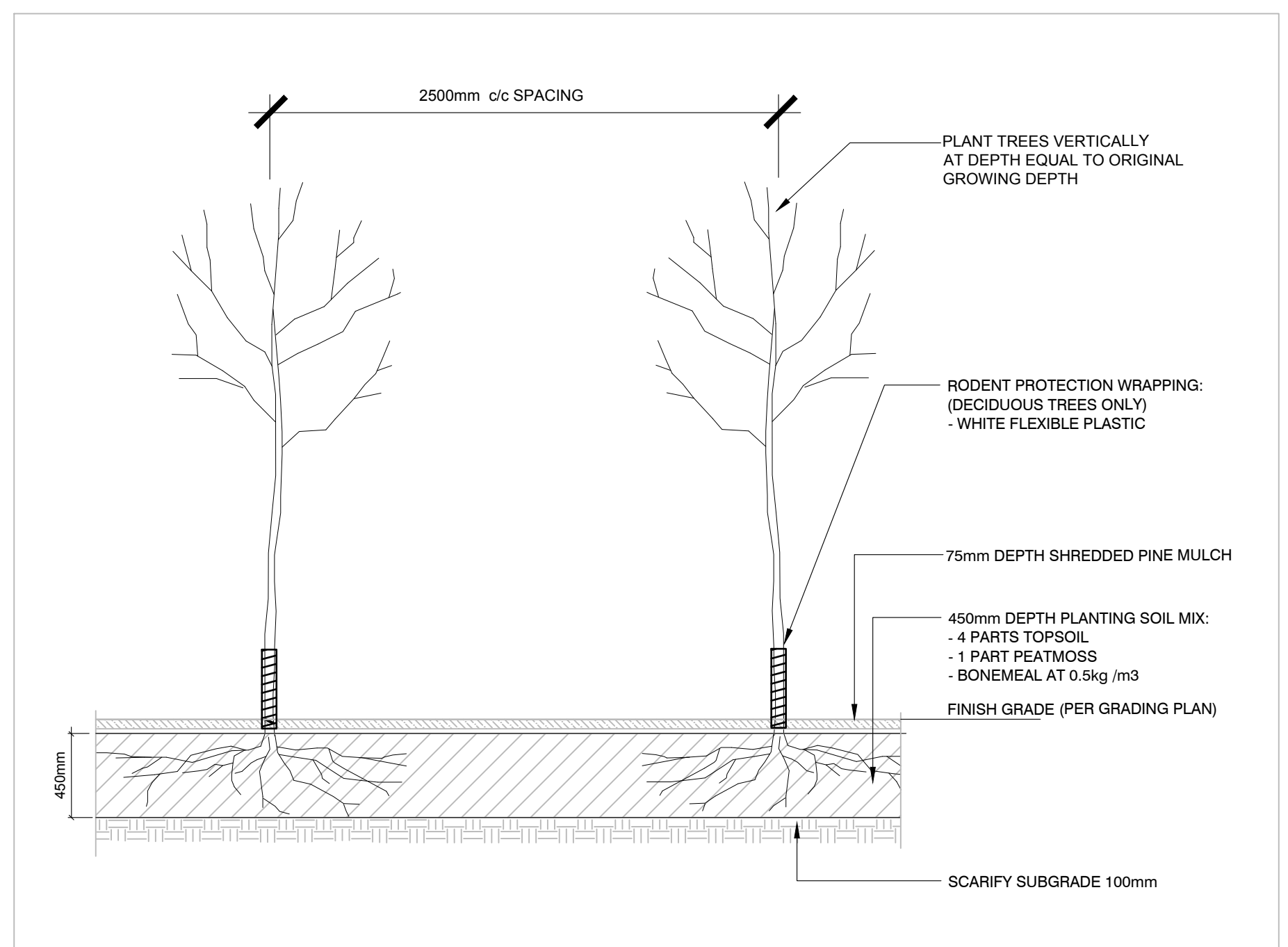
Scale: **1:300** Project No: **1164** Drawing No: **L1.01**



- TREE PROTECTION REQUIREMENTS:**
- PROTECT TO ANY WORK ACTIVITY WITHIN THE CRITICAL ROOT ZONE (CRZ = 10 X DIAMETER OF A TREE). TREE PROTECTION FENCING MUST BE INSTALLED SURROUNDING THE CRITICAL ROOT ZONE AND REMAIN IN PLACE UNTIL THE WORK IS COMPLETE.
 - UNLESS PLANS ARE APPROVED BY CITY FORESTRY STAFF, FOR WORK WITHIN THE CRZ:
 - DO NOT PLACE ANY MATERIAL OR EQUIPMENT - INCLUDING OUTRIGGERS;
 - DO NOT ATTACH ANY SIGNS, NOTICES OR POSTERS TO ANY TREE;
 - DO NOT RAISE OR LOWER THE EXISTING GRADE;
 - TUNNEL OR BORE WHEN DIGGING;
 - DO NOT DAMAGE THE ROOT SYSTEM, TRUNK, OR BRANCHES OR ANY TREE;
 - ENSURE THAT EXHAUST FUMES FROM ALL EQUIPMENT ARE NOT DIRECTED TOWARD ANY TREE CANOPY;
 - DO NOT EXTEND HARD SURFACE OR SIGNIFICANTLY CHANGE LANDSCAPING.
 - TREE PROTECTION FENCING MUST BE AT LEAST 1.2M IN HEIGHT, AND CONSTRUCTED OF RIGID OR FRAMED MATERIALS (E.G. MODULOC, STEEL, PLYWOOD HOARDING, OR SNOW FENCE ON A 2" X 4" WOOD FRAME) WITH POSTS 2.4M APART, SUCH THAT THE FENCE LOCATION CANNOT BE ALTERED. ALL SUPPORTS AND BRACING MUST BE PLACED OUTSIDE OF THE CRZ AND INSTALLATION MUST MINIMISE DAMAGE TO EXISTING ROOTS. (SEE DETAIL)
 - THE LOCATION OF THE TREE PROTECTION FENCING MUST BE DETERMINED BY AN ARBORIST AND DETAILED ON ANY ASSOCIATED PLANS FOR THE SITE (E.G. TREE CONSERVATION REPORT, TREE INFORMATION REPORT, ETC). THE PLAN AND CONSTRUCTED FENCING MUST BE APPROVED BY CITY FORESTRY STAFF PRIOR TO THE COMMENCEMENT OF WORK.
 - IF THE FENCED TREE PROTECTION AREA MUST BE REDUCED TO FACILITATE CONSTRUCTION, MITIGATION MEASURES MUST BE PRESCRIBED BY AN ARBORIST AND APPROVED BY CITY FORESTRY STAFF. THESE MAY INCLUDE THE PLACEMENT OF PLYWOOD, WOOD CHIPS, OR STEEL PLATING OVER THE ROOTS FOR PROTECTION OR THE PROPER PRUNING AND CARE OF ROOTS WHERE ENCOUNTERED.
- THE CITY'S TREE PROTECTION BY-LAW, 2020-340 PROTECTS BOTH CITY OWNED TREES, CITY-WIDE, AND PRIVATELY OWNED TREES WITHIN THE URBAN AREA. PLEASE REFER TO WWW.CITYOFTWAGO.CA/TREELAW FOR MORE INFORMATION ON HOW THE TREE BY-LAW APPLIES.

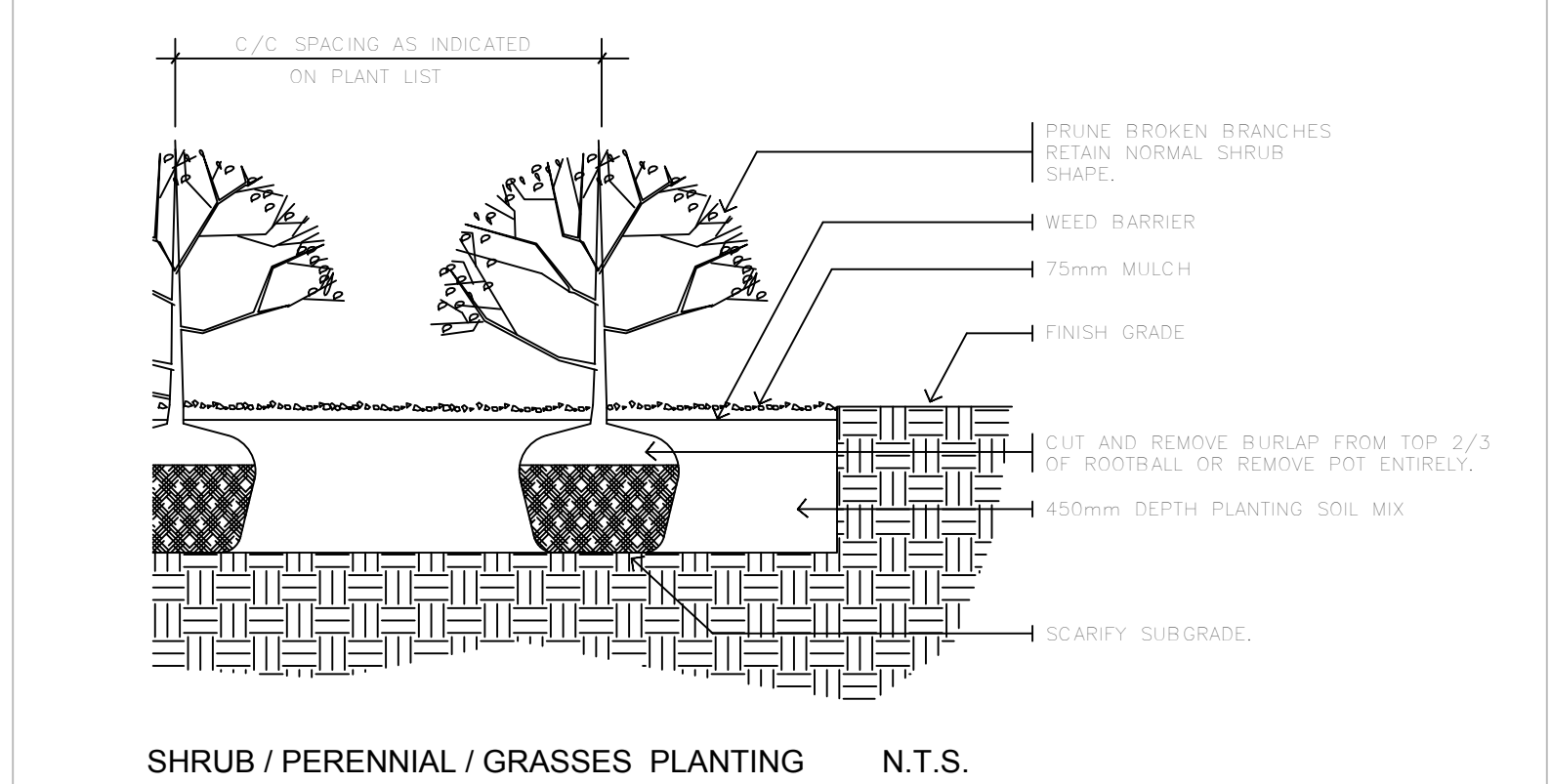
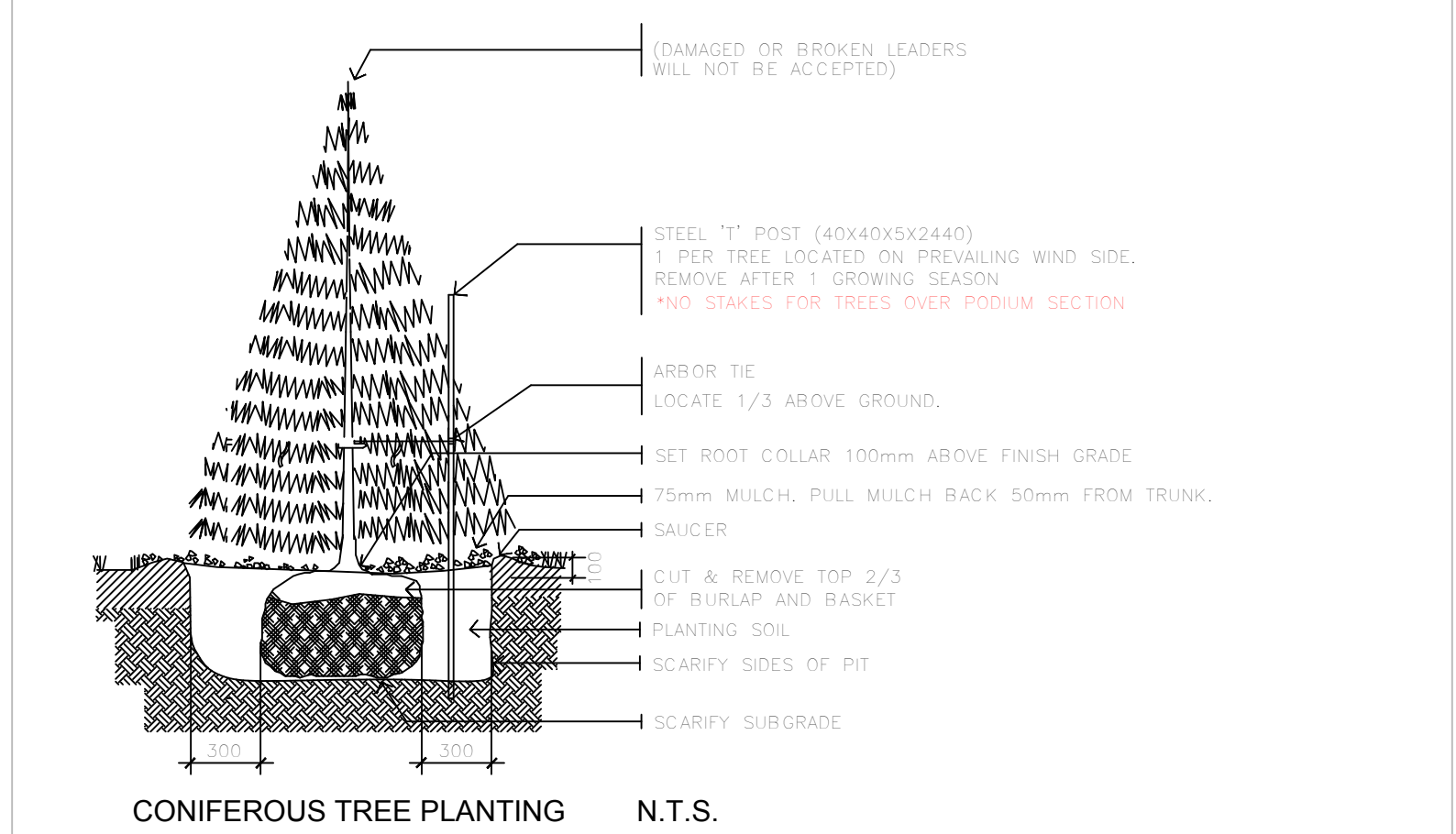
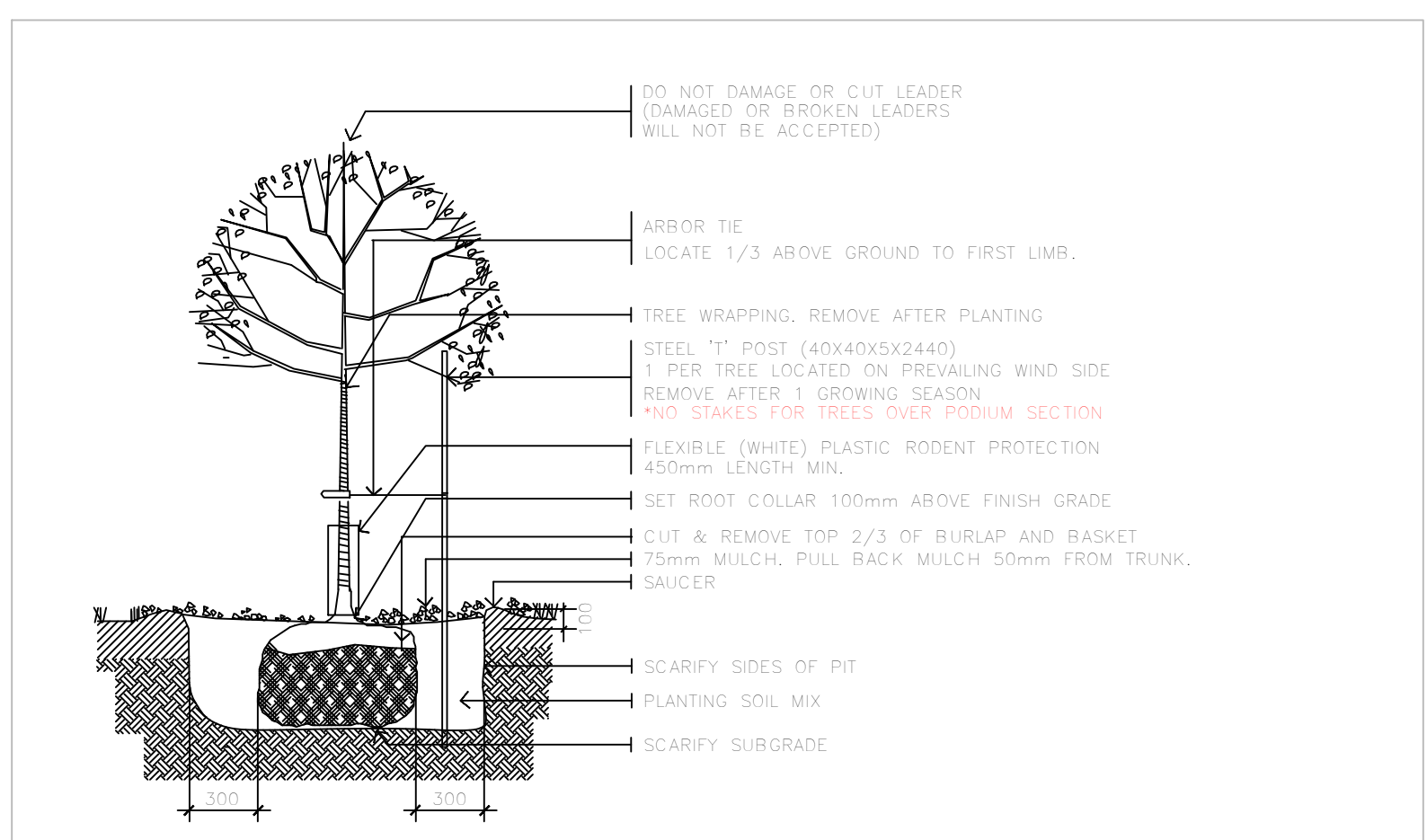


3 L2.01 WILDLIFE EXCLUSION FENCING DETAIL NTS



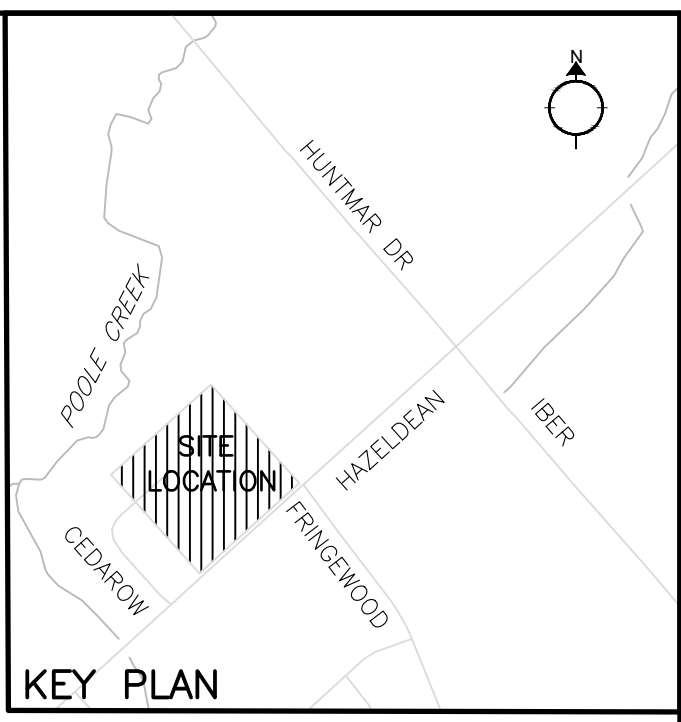
4 L2.01 REFORESTATION / NATURALIZATION PLANTING PROFILE NTS

1 L2.01 TREE PROTECTION BARRIER NTS



*ROOT BARRIER SHALL BE INSTALLED IN CONFORMANCE WITH INTENSIVE GREEN ROOF INVERTED ROOFING ASSEMBLY

2 L2.01 PLANTING DETAILS NTS



FOR APPROVAL ONLY

no.	date	revision
4.	JUNE 2023	RE-ISSUE FOR SPA AMENDMENT
3.	DEC 22/22	ISSUE FOR SPA AMENDMENT
2.	MAR 23/22	RE-ISSUE FOR SPA
1.	MAR 18/22	ISSUE INFORMATION ONLY

North Arrow

Stamp

Contractor shall check and verify all dimensions on site and report all errors and/or omissions to the Consultant.
Work to be done in accordance with all applicable codes and by-laws.
Do not scale Drawing.
This Drawing shall not be used for construction until signed by the Consultant.
Copyright reserved. This Drawing is the exclusive property of Levstek Consultants Inc. and shall not be used without consent.

Consultant

LEVSTEK CONSULTANT'S
LANDSCAPE ARCHITECTS
1871 Hugh Creekcent - Ottawa, Ontario - K6A 2W0
613 - 924 - 9818

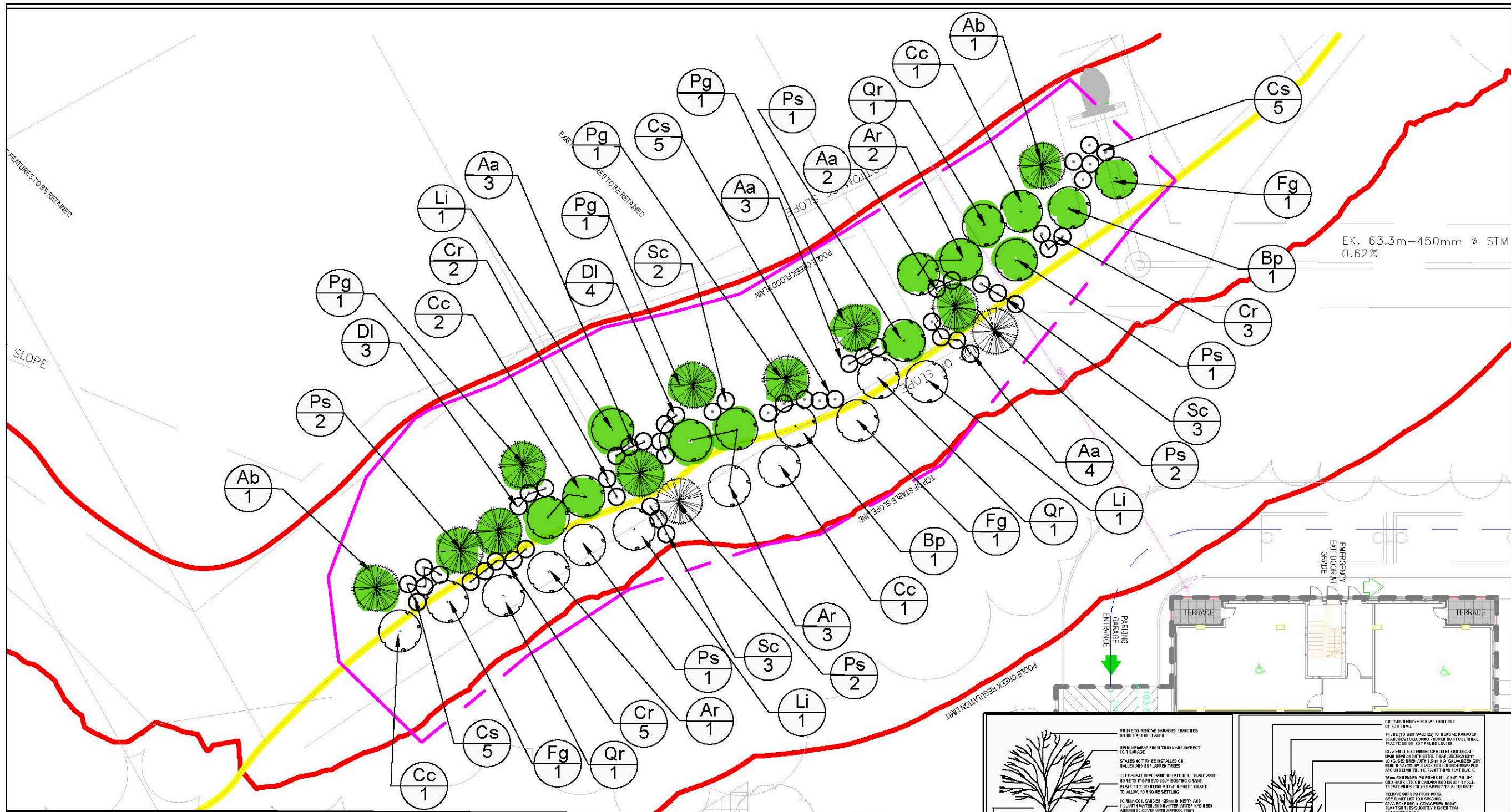
Client

Nautical Land Group **Wellings** **NLGC**

Project
WELLINGS OF STITTSVILLE
PHASE 2 / 3
20 CEDAROW COURT

Drawing Title
LANDSCAPE DETAILS

Drawn	MGB	Drawing No.
Scale	AS SHOWN	L2.01
Project No.	1164	



LEGEND

- PLANTING PLAN AREA
- PROPOSED DECIDUOUS TREE PLANTING
- PROPOSED CONIFEROUS TREE PLANTING
- PROPOSED SHRUB PLANTING

EX. 63.3m-450mm Ø STM
0.62%

LEGEND IS COLOUR DEPENDENT.
NON-COLOUR COPIES MAY ALTER
INTERPRETATION.



PROJECT NAME:
RESTORATION PLANTING PLAN

CLIENT NAME:
NAUTICAL LANDS GROUP

PROJECT LOCATION:
**20 CEDAROW COURT,
STITTSVILLE, ONTARIO**

FIGURE NAME:
RESTORATION PLANTING PLAN

PROJECT NUMBER:
247248.001

SCALE:
AS SHOWN

DRAWN BY:
KP

REVIEWED BY:
RY

DATE:
SEPTEMBER 2021

FIGURE NUMBER:
1

Restoration Planting List

Common Name	Scientific Name	Planting Area	Form	Symbol	Quantity	Specs	Comments
American Beech	<i>Fagus grandifolia</i>	•	Tree	Fg	3	60mm WB	
Balsam Fir	<i>Abies balsamea</i>	•	Tree	Ab	2	60mm WB	
White Birch	<i>Betula papyrifera</i>	•	Tree	Bp	2	60mm WB	Betula alleghaniensis for substitute if necessary
Bittemut Hickory	<i>Carya cordiformis</i>	•	Tree	Cc	5	60mm WB	
Black Cherry	<i>Prunus serotina</i>	•	Tree	Ps	3	60mm WB	
Red Maple	<i>Acer rubrum</i>	•	Tree	Ar	7	60mm WB	Acer saccharum for substitute if necessary
Red Oak	<i>Quercus rubra</i>	•	Tree	Qr	3	60mm WB	Quercus macrocarpa for substitute if necessary
Tamarack	<i>Larix laricina</i>	•	Tree	Li	3	60mm WB	
White Pine	<i>Pinus strobus</i>	•	Tree	Pg	6	150cm WB	
White Spruce	<i>Picea glauca</i>	•	Tree	Pg	4	150cm WB	
Red-osier Dogwood	<i>Cornus sericea</i>	•	Shrub	Cs	15	60cm 3gal	
Gray Dogwood	<i>Cornus racemosa</i>	•	Shrub	Cr	10	60cm 3gal	Cornus sericea for substitute if necessary
Black Elderberry	<i>Sambucus canadensis</i>	•	Shrub	Sc	8	60cm 3gal	Sambucus pubens for substitute if necessary
Bush-honeysuckle	<i>Diervilla lonicera</i>	•	Shrub	DI	7	60cm 3gal	
Service Berry	<i>Amelanchier arborea</i>	•	Shrub	Aa	12	60cm 3gal	

Restoration Planting Notes

- The restoration planting is to be carried out at 20 Cedarow Court post construction in appropriate season (i.e. Fall 2021 or spring 2022) in the planting area.
- Planting Area: all planting beds is to be treated to a minimum depth of 0.6 m of topsoil for the shrub planting areas, and 1 m of topsoil for any tree planting areas. Shrubs are to be planted at 1-2 m on centre and trees 3 m on centre.
- Invasive plants such as European Buckthorn or Garlic Mustard are to be manually removed prior to the preparation of planting beds.
- All plant species are to be planted within the appropriate planting area based on the planting list for better survival and suitability.
- The planting is to be inspected by an Environmental Monitor during and post planting to confirm the correct planting location, species and numbers. Regular maintenance and monitoring of the planting area should be conducted to ensure the long term survival/ship of plants and recommend any re-planting or re-seeding within the designated area.

