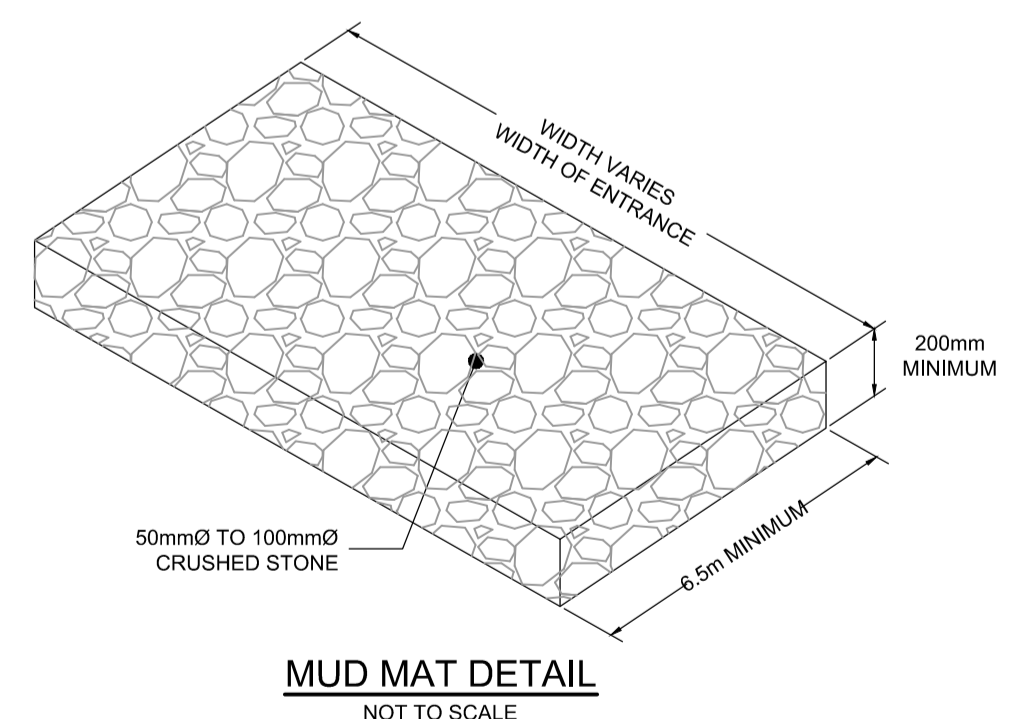


- LEGEND**
- PROPERTY LINE
  - PROPOSED CURB
  - DC PROPOSED DEPRESSED CURB
  - PROPOSED RETAINING WALL C/W GUARD RAIL
  - PROPOSED CAP
  - PROPOSED STORM SEWER AND MANHOLE
  - PROPOSED CATCHBASIN MANHOLE
  - PROPOSED CATCHBASIN
  - PROPOSED LANDSCAPE DRAIN
  - PROPOSED TRENCH DRAIN
  - PROPOSED BUILDING ENTRANCE
  - SWALE c/w SUBDRAIN AND DIRECTION OF FLOW
  - TERRACING 3:1 SLOPE MAX (UNLESS OTHERWISE INDICATED)
  - PROPOSED FILTER BAGS AT CATCHBASINS, CATCHBASIN MANHOLES AND TRENCHDRAINS
  - MM PROPOSED MUD MAT
  - LIGHT DUTY SILT FENCE (OPSD 219.110)
  - EXISTING STORM MANHOLE
  - EXISTING CATCHBASIN
  - EXISTING LIGHT STANDARD
  - EXISTING FENCE

**EROSION AND SEDIMENT CONTROL NOTES:**

- THE CONTRACTOR SHALL IMPLEMENT BEST MANAGEMENT PRACTICES, TO PROVIDE FOR PROTECTION OF THE AREA DRAINAGE SYSTEM AND THE RECEIVING WATERCOURSE, DURING CONSTRUCTION ACTIVITIES. THE CONTRACTOR ACKNOWLEDGES THAT FAILURE TO IMPLEMENT APPROPRIATE EROSION AND SEDIMENT CONTROL MEASURES MAY BE SUBJECT TO PENALTIES IMPOSED BY ANY APPLICABLE REGULATORY AGENCY.
- 1) THE OWNER AGREES TO PREPARE AND IMPLEMENT AN EROSION AND SEDIMENT CONTROL PLAN TO THE SATISFACTION OF THE CITY OF OTTAWA, APPROPRIATE TO THE SITE CONDITIONS, PRIOR TO UNDERTAKING ANY SITE ALTERATIONS (FILLING, GRADING, REMOVAL OF VEGETATION, ETC.) AND DURING ALL PHASES OF SITE PREPARATION AND CONSTRUCTION IN ACCORDANCE WITH THE CURRENT BEST MANAGEMENT PRACTICES FOR EROSION AND SEDIMENT CONTROL SUCH AS BUT NOT LIMITED TO INSTALLING FILTER CLOTHS ACROSS MANHOLE/CATCHBASIN LIDS TO PREVENT SEDIMENTS FROM ENTERING STRUCTURES AND INSTALS AND MAINTAIN A LIGHT DUTY SILT FENCE BARRIER AS REQUIRED.
  - 2) THE CONTRACTOR SHALL PLACE FILTER BAGS UNDER THE CATCHBASIN AND MANHOLE GRATES FOR THE DURATION OF CONSTRUCTION AND WILL REMAIN IN PLACE DURING ALL PHASES OF CONSTRUCTION.
  - 3) SILT FENCING FOR ENTIRE PERIMETER OF SITE, SHALL BE UTILIZED TO CONTROL EROSION FROM THE SITE DURING CONSTRUCTION.
  - 4) THE CONTRACTOR ACKNOWLEDGES THAT FAILURE TO IMPLEMENT EROSION AND SEDIMENT CONTROL MEASURES MAY BE SUBJECT TO PENALTIES IMPOSED BY ANY APPLICABLE REGULATORY AGENCY.
  - 5) PROVIDE MUD MATS AT ALL CONSTRUCTION ACCESS POINTS TO MINIMIZE SEDIMENT TRANSPORT OFFSITE.
  - 6) EROSION AND SEDIMENT CONTROL MEASURES MAY BE MODIFIED IN THE FIELD AT THE DISCRETION OF THE CITY OF OTTAWA SITE INSPECTOR OR CONSERVATION AUTHORITY.

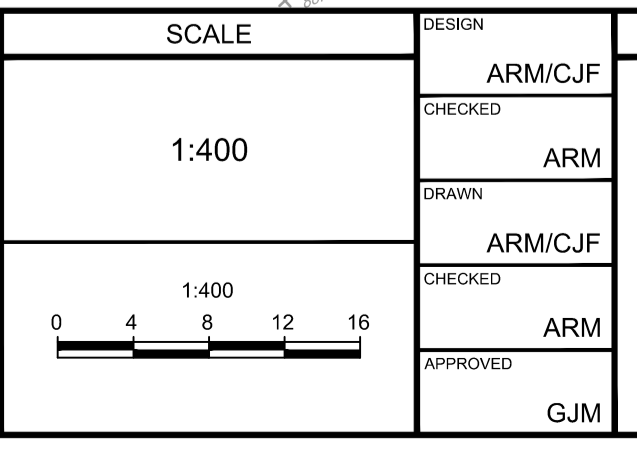


REFER TO 122179-ND FOR ADDITIONAL NOTES & DETAILS

**NOTE:**  
THE POSITION OF ALL POLE LINES, CONDUITS, WATERMANS, SEWERS AND OTHER UNDERGROUND AND OVERGROUND UTILITIES AND STRUCTURES IS NOT NECESSARILY SHOWN ON THE CONTRACT DRAWINGS, AND WHERE SHOWN, THE ACCURACY OF THE POSITION OF SUCH UTILITIES AND STRUCTURES IS NOT GUARANTEED. BEFORE STARTING WORK, DETERMINE THE EXACT LOCATION OF ALL SUCH UTILITIES AND STRUCTURES AND ASSUME ALL LIABILITY FOR DAMAGE TO THEM.

**NOT FOR CONSTRUCTION**

No.	REVISION	DATE	BY
2.	REVISED PER CITY COMMENTS	SEPT 15/2023	GJM
1	ISSUED FOR SITE PLAN APPLICATION	MAY 24/2023	GJM



**FOR REVIEW ONLY**

DESIGN: ARM/CJF  
 CHECKED: ARM  
 DRAWN: ARM/CJF  
 CHECKED: ARM  
 APPROVED: GJM

**LICENSED PROFESSIONAL ENGINEER**  
 A.R. MESTWARP  
 100201804  
 PROVINCE OF ONTARIO

**LICENSED PROFESSIONAL ENGINEER**  
 G.J. MacDONALD  
 15661-16-2023  
 PROVINCE OF ONTARIO

**NOVATECH**  
 Engineers, Planners & Landscape Architects  
 Suite 200, 240 Michael Cowpland Drive  
 Ottawa, Ontario, Canada K2M 1P6

Telephone: (613) 254-9643  
 Facsimile: (613) 254-5867  
 Website: www.novatech-eng.com

LOCATION  
4200 INNES ROAD, CITY OF OTTAWA  
TRINITY APARTMENTS

DRAWING NAME  
**EROSION AND SEDIMENT CONTROL PLAN**

PROJECT No.	122179
REV	REV#2
DRAWING No.	122179-ESC

PLAN No. 18993

M:\2023\122179\CAD\Civil\122179-ESC.dwg, ESC, Sep 14, 2023 - 10:56am, armestwarp

CITY FILE No. D07-12-23-0068