

TREES 1400 1410 YOUVILLE

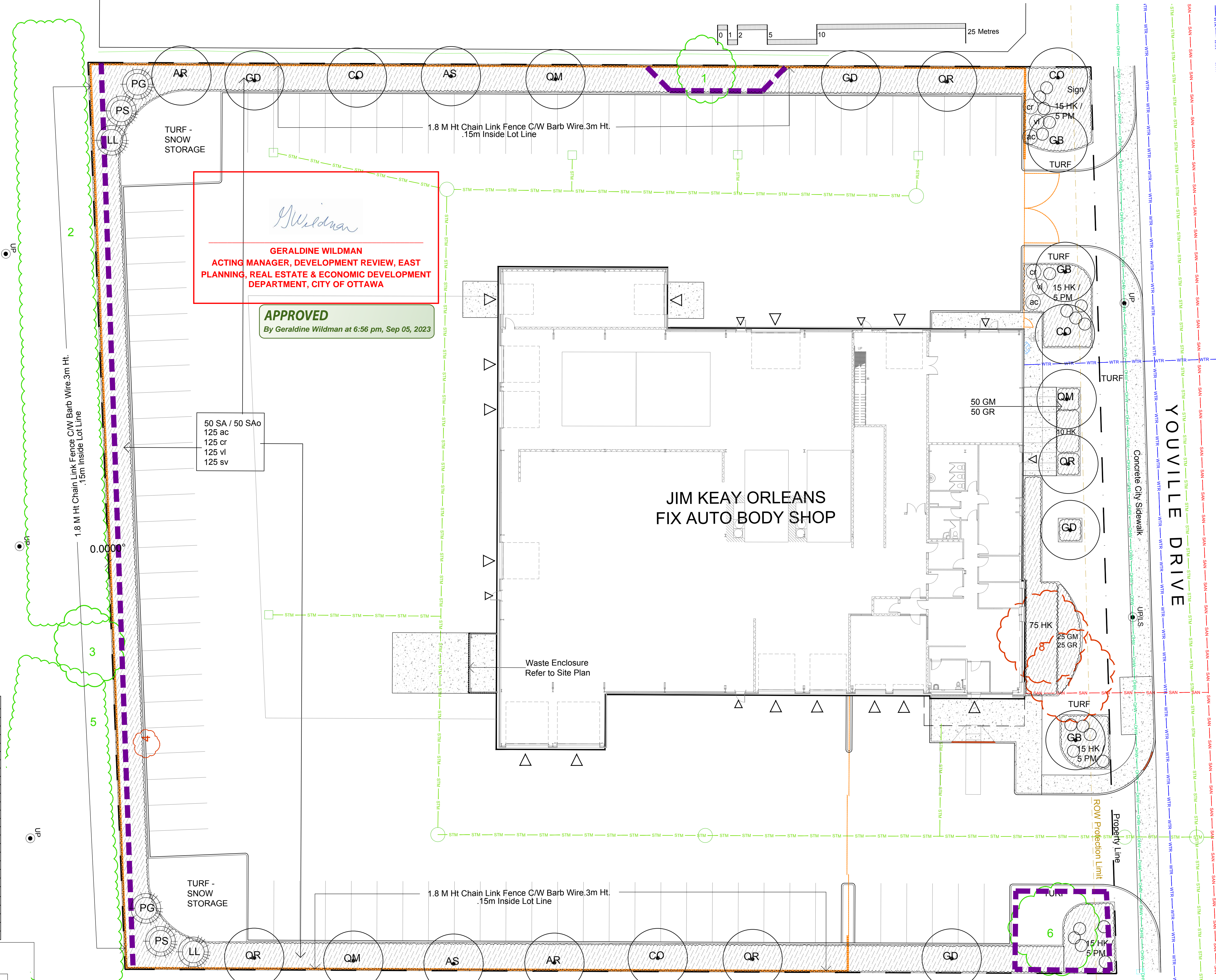
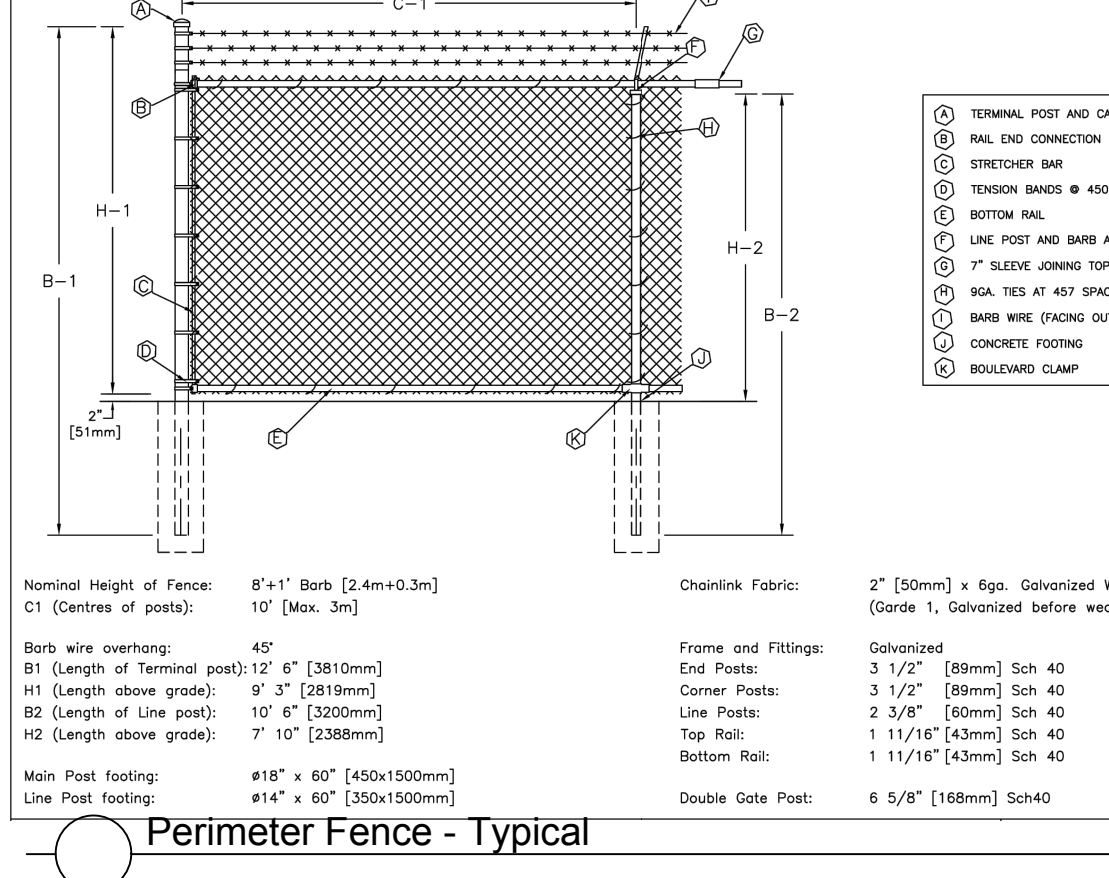
Code	Qty.	Botanical Name	Common Name	Size	Condition
AR	2	Acer rubrum	Red Maple	70mm cal	B + B specimen
AS	2	Acer saccharum	Sugar Maple	60mm cal	B + B specimen
CO	4	Celtis occidentalis	Common Hackberry	60mm cal	B + B specimen
GB	3	Ginkgo biloba	Maidenhair Tree	60mm cal	B + B specimen
GD	4	Gymnocladus dioica	Kentucky Coffee Tree	60mm cal	B + B specimen
QM	3	Quercus macrocarpa	Bur Oak	70mm cal	B + B specimen
QR	4	Quercus rubra	Red Oak	60mm cal	B + B specimen
LL	2	Larix laricina	Eastern Larch / Tamarack	2.25m Ht.	B + B specimen
PG	2	Picea glauca	White Spruce	2.5m Ht.	B + B specimen
PS	2	Pinus strobus	White Pine	1.75m Ht.	B + B specimen

SHRUBS 1400 1410 YOUVILLE

Code	Qty.	Botanical Name	Common Name	Size	Condition
ac	125	Amelanchier canadensis	Serviceberry	150cm Ht.	Pot
cr	125	Cornus racemosa	Grey Dogwood	100cm Ht.	Pot
HK	135	Hypericum kalmianum	St. John's Wort	30cm Ht.	Pot
sv	125	Syringa vulgaris alba	White Common Lilac	125cm Ht.	Pot
vl	125	Viburnum lentago	Nannyberry	125cm Ht.	Pot
Sao	50	Symphoricarpos albus	Snowberry	60cm Ht.	Pot
SA	50	Spiraea alba	Meadowsweet	50cm Ht.	Pot

GC 1400 1410 YOUVILLE

Qty.	Botanical Name	Common Name	Condition
GM	50	Geranium macrorrhizum	Bigroot Geranium
GR	50	Geranium psilostemon 'Gerwat'	Rozanne Geranium
PV	50	Panicum virgatum	Switch Grass
PM	20	Pinus mugo var. pumilio	Mugho Pine



G. Wildman

GERALDINE WILDMAN
ACTING MANAGER, DEVELOPMENT REVIEW, EAST PLANNING, REAL ESTATE & ECONOMIC DEVELOPMENT DEPARTMENT, CITY OF OTTAWA

APPROVED
By Geraldine Wildman at 6:56 pm, Sep 05, 2023

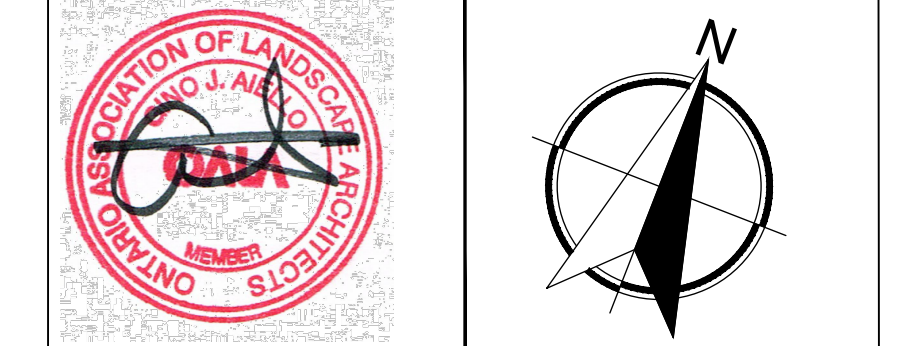
Drawing Remains the Property of/Copyright Reserved by GJA INC. Do Not Use or Reproduce Without Approval of GJA INC. NOT To Be Used For Construction Unless Indicated by Revision: **FOR LANDSCAPE CONSTRUCTION**. Contractor is Responsible for Verification of Site Locations of all Utilities. Report any Discrepancies Between Site and Drawing Immediately to GJA INC. Do NOT Proceed Until Clarified.

TURF AREAS TO BE SOD C/W 150MM DEPTH TOPSOIL ON APPROVED SUBGRADE | SOD TO BE #1 GRADE TURFGRASS NURSERY SOD per NSGA - Fine Fescue/Kentucky Bluegrass Sod | PLANTING MIX TO BE APPROVED BY LANDSCAPE ARCHITECT | PLANT MATERIAL TO MEET CNLA STANDARDS/BE APPROVED BY LANDSCAPE ARCHITECT PRIOR TO PLANTING | ALL MATERIALS & WORK TO BE MAINTAINED UNTIL FINAL ACCEPTANCE. (MOWING TURF, WEEDING BEDS, WATERING TURF & PLANTS) & INCLUDE 1 YEAR WARRANTY FROM DATE OF FINAL ACCEPTANCE | PROVIDE WATERING OF ALL PLANT MATERIAL AS REQUIRED FOR PROPER ESTABLISHMENT UNTIL END OF WARRANTY PERIOD | REFER TO CIVIL ENGINEER'S DRAWING FOR ELEVATIONS / GRADING |

The Landscape Plan is to be read in conjunction with the grading, servicing, site and survey plan | Bare root material to be planted in season only | All plant material locations to be staked on site by the landscape contractor and checked by the landscape architect prior to planting | All trees to be preserved on or directly adjacent to the site will be protected | Plant material are to be installed a minimum of 3.0m away from any part of any hydro transformer, 3.0m corridor between a fire hydrant and the curb, a 2.5m radius beside or behind a fire hydrant, 2.0m from any servicing/utility line or structure |

- Proposed Deciduous Tree
- Shrub Planting Bed
- Concrete
- 1.8 M Ht Chain Link Fence C/W Barb Wire.3m Ht.
- Site Security Gates - Refer To Site Plan
- Fire Hydrant
- FD Siamese Connection
- Light Standard/ Utility Pole
- Depressed Curb
- REFER TO TCR BY IFS
- Existing Tree to Remain
- Existing Tree to Remove
- Protection for Existing Trees
- BELOW GRADE SERVICES REFER TO CIVIL/CUP
- U/G Water Service
- U/G Storm Service
- U/G Sanitary Service
- U/G Gas Service
- U/G TelCo Service
- U/G Hydro Service
- O/H Hydro Service

#	Revision	Date
4	ROW PROTECTION LIMIT ADDED	2023 07 05
3	SITE PLAN CONTROL SUBMISSION 2	MAY 1 2023
2	COORDINATION	FEB. - APRIL 2023
1	SITE PLAN CONTROL SUBMISSION 1	AUGUST 25 2022
0	REVIEW/COORDINATION	AUGUST 2022



Property Owner
2167659 Ontario Inc.
1438 Youville Drive, Orleans Ontario, K1C 2X8, 613-841-3099

Gino J. Aiello | landscape architect
GJA INC.
GJA Inc.

Project
FIX AUTO BODYSHOP
1400-1410 YOUVILLE DRIVE ORLEANS

Scale: 1:200
City of Ottawa
Dwg - 18194

Sheet Number
L1
D07-12-22-0130