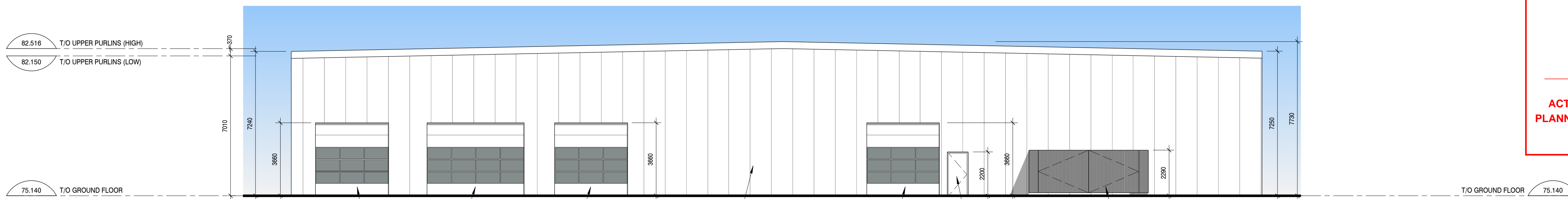


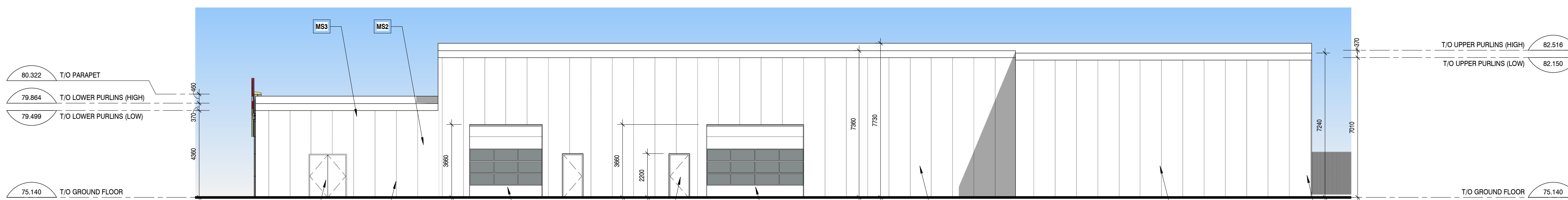
1 BUILDING ELEVATION - EAST
A030 SCALE: 1 : 125



2 BUILDING ELEVATION - SOUTH
A030 SCALE: 1 : 125



3 BUILDING ELEVATION - WEST
A030 SCALE: 1 : 125



4 BUILDING ELEVATION - NORTH
A030 SCALE: 1 : 125

ELEVATION NOTES

NOTE#	NOTE
AW1	Clear Anodized Aluminum Window c/w Clear Glass
BS	Building Signage, by others
GE	Prefinished Metal Panel on Galvanized Steel framing Garbage Enclosure
HM1	Painted Hollow-Metal Single Door and Steel Frame; Paint colour to match exterior wall colour.
HM2	Painted Hollow-Metal Double Door and Steel Frame; Paint colour to match exterior wall colour.
IMP1	Insulated Metal Panel Walls (Kingspan or sim.), installed vertically, Colour: Regal White
MF1	Prefinished Metal Flashing, matching MS2
MS1	Prefinished Metal Siding, Colour: TBD
MS2	Prefinished Metal Siding, Colour: TBD
MS3	Prefinished Metal Siding, Colour: TBD
OH1	Full-Glazed Aluminum Overhead Door, Clear Glass in Clear Anodized framing; 10'-0" W x 10'-0" H
OH2	Prefinished Insulated Sectional Overhead Door c/w Clear Glass Sections as shown; Size: 12'-0" W x 12'-0" H
OH3	Prefinished Insulated Sectional Overhead Door c/w Clear Glass Sections as shown; Size: 14'-0" W x 14'-0" H
OH4	Prefinished Insulated Sectional Overhead Door c/w Clear Glass Sections as shown; Size: 14'-0" W x 14'-0" H
OH5	Prefinished Insulated Sectional Overhead Door c/w Clear Glass Sections as shown; Size: 16'-0" W x 12'-0" H
SF1	Clear Anodized Aluminum Storefront c/w Clear Glass

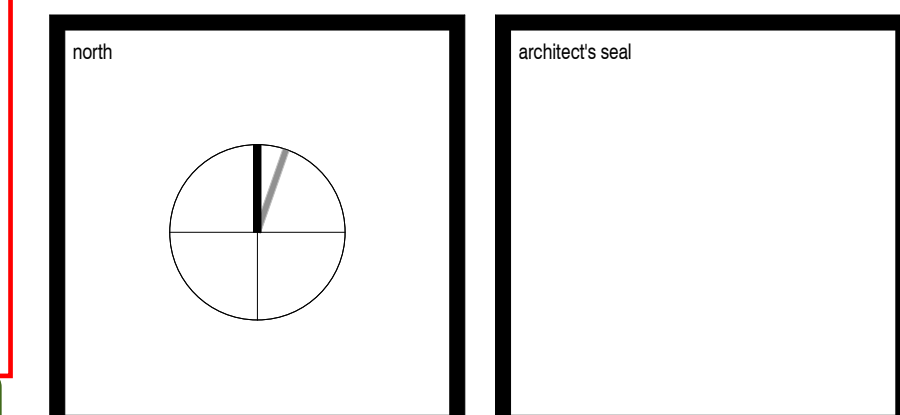
REVISIONS

No.	DATE	DESCRIPTION
0	12 August 2022	Issued for Coordination
1	18 August 2022	Issued for Site Plan Control

It is the responsibility of the appropriate contractor to check and verify all dimensions on site and report all errors and / or omissions to the Architect. All contractors must comply with all pertinent codes and by-laws. Do not scale drawings. This drawing may not be used for construction until signed by KWC Architects Inc. and shall not be used without the Architect's consent.

G. Wildman
GERALDINE WILDMAN
 ACTING MANAGER, DEVELOPMENT REVIEW, EAST PLANNING, REAL ESTATE & ECONOMIC DEVELOPMENT DEPARTMENT, CITY OF OTTAWA

APPROVED
 By Geraldine Wildman at 6:53 pm, Sep 05, 2023



KWC ARCHITECTS INC.
 383 Parkdale Avenue, Suite 201
 Ottawa, Ontario, Canada, K1Y 4R4
 Phone: 613 238-2217
 Fax: 613 238-6595
 E-Mail: kwc@kwc-arch.com

BBS
 BUILDING A REPUTATION ON EXCELLENCE
 BBS CONSTRUCTION (ONTARIO) LTD.
 1805 WOODWARD DRIVE,
 OTTAWA, ON. K2C 0P9 CANADA
 TEL: (613) 226-8830 FAX: (613) 226-7709
 www.bbsconstruction.ca



5 3D PERSPECTIVE FROM YOUVILLE DR.
A030 SCALE:

owner: **JIM KEAY**

project: **'FIX AUTO' ORLEANS - AUTOMOBILE BODY SHOP**

drawing title: **BUILDING ELEVATIONS, PERSPECTIVE VIEW**

project no.: **2250** drawing no.: **A030**

scale: **1 : 125**

drawn by: **TC**

date: **2022 JULY 15**