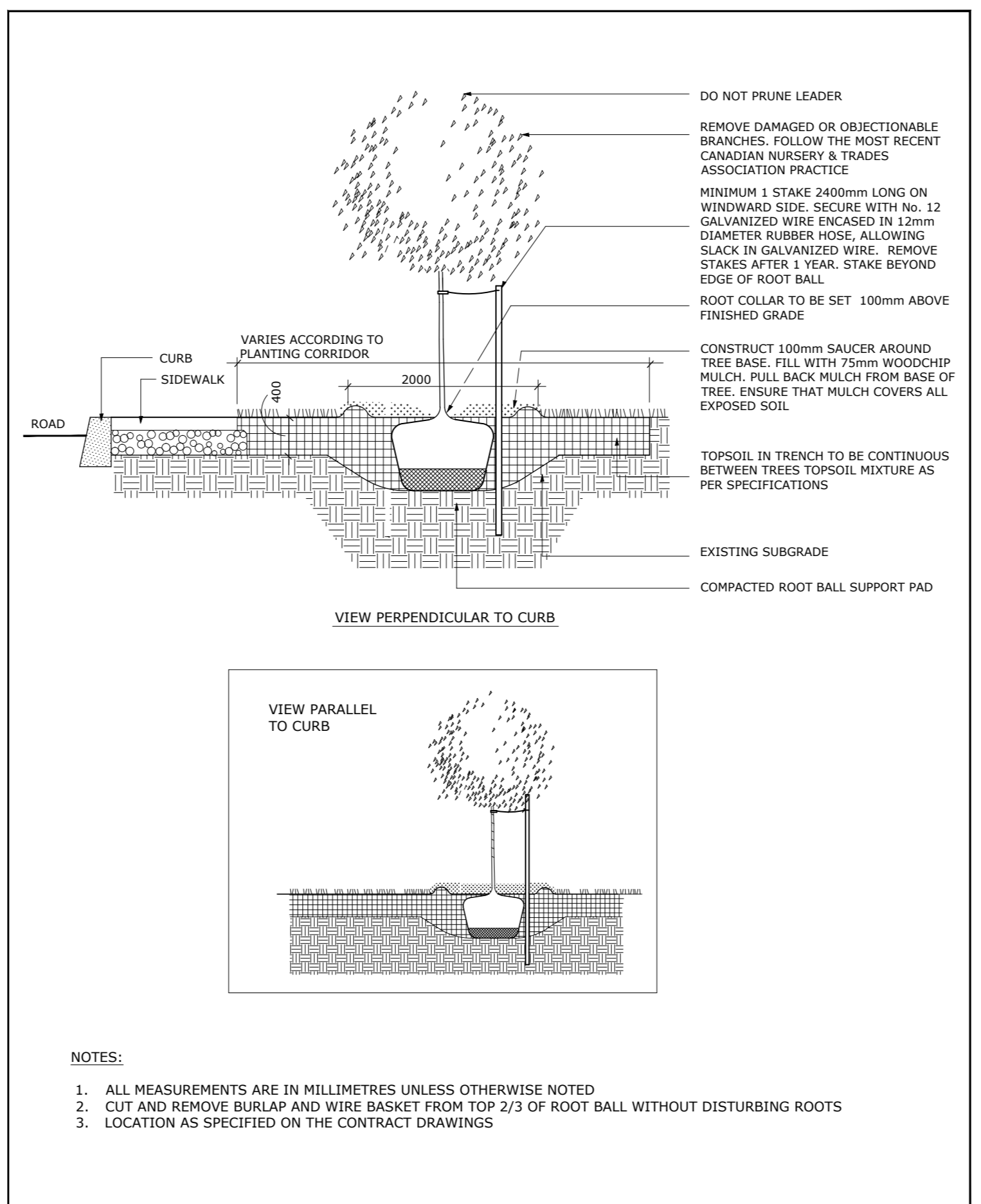


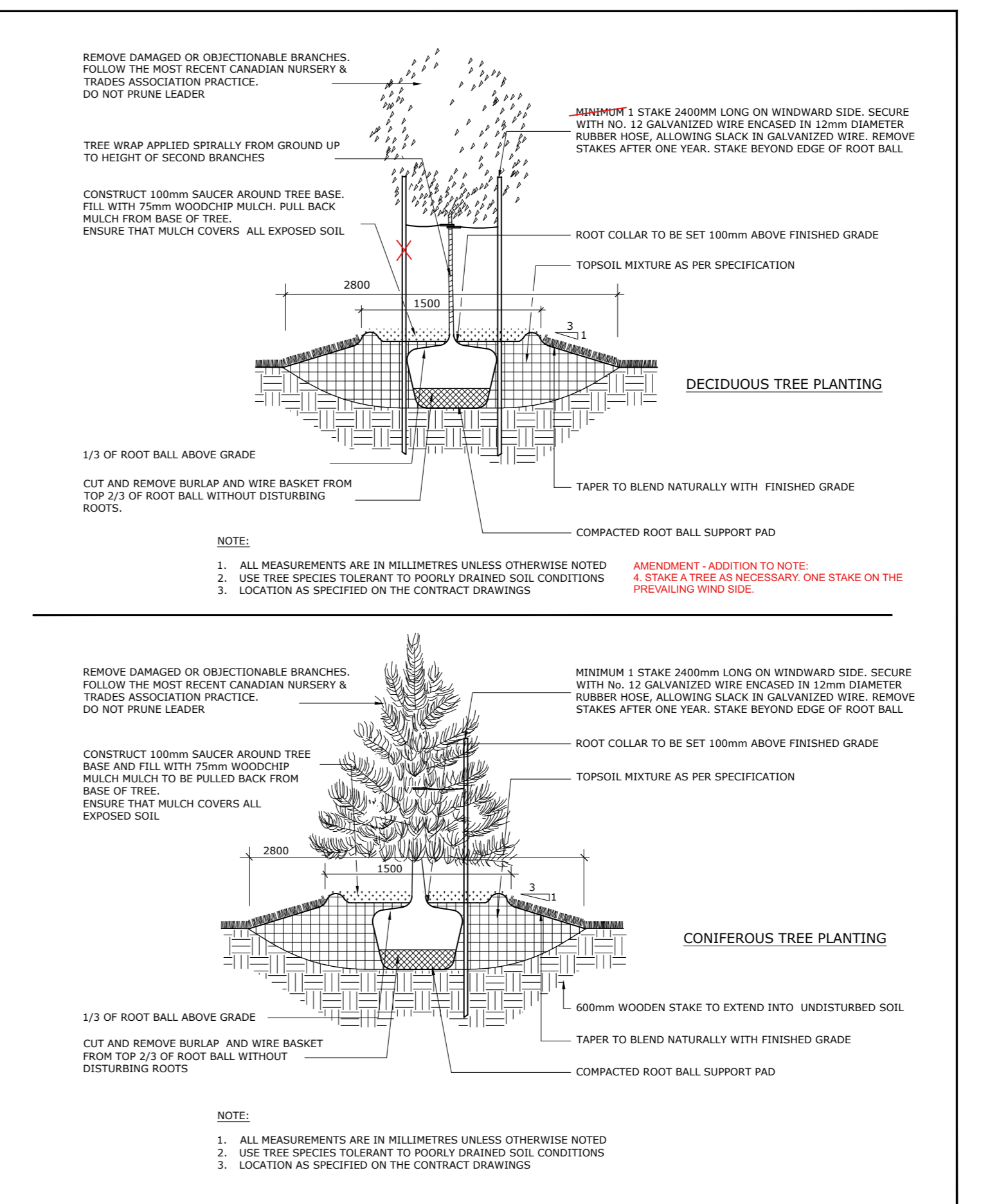
NOTES:

TREES ARE TO BE INSTALLED AS PER CITY STANDARD DETAILS; SOIL VOLUME AS PER BELOW NOTES AND MATRIX ON SHEET L-01.

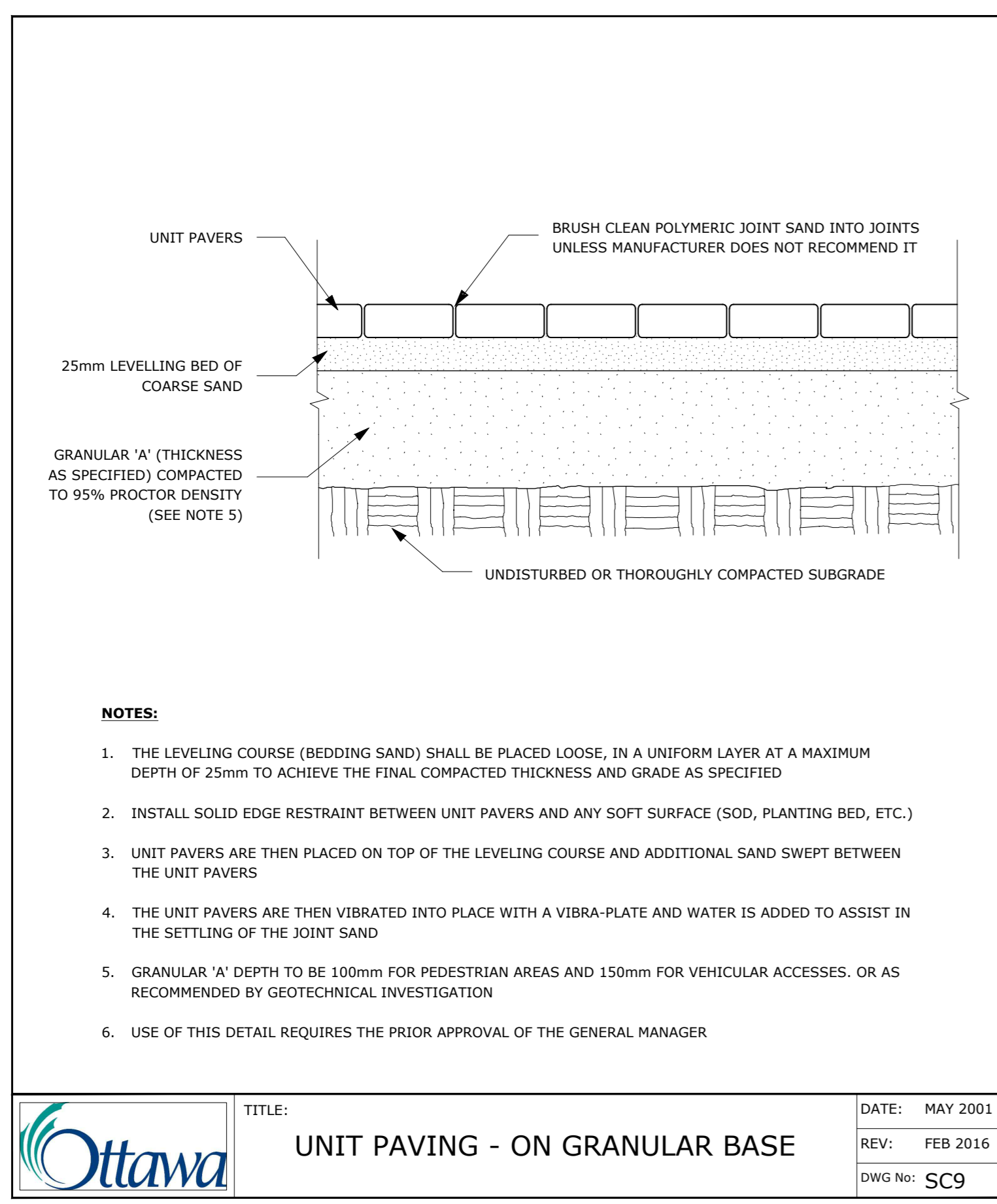
- STANDARD TREE SOIL VOLUMES QUANTITIES INCLUDE THE TOP 900-1000mm OF SOIL/EXISTING SUBSOIL LAYER TO CALCULATE TOTAL SOIL VOLUMES REQUIRED BY THE CITY OF OTTAWA FOR SUSTAINABLE TREE GROWTH. WHERE LARGER SOFT AREAS ARE AVAILABLE, THE TOP 400-500mm LAYER IS USED TO CALCULATE SOIL VOLUMES.
- WHERE EXISTING MATERIAL BELOW THE SPECIFIED TOPSOIL IS NOT CONDUCTIVE TO TREE GROWTH, AN ADDITIONAL LAYER OF PLANTING MEDIUM IS TO BE INSTALLED BELOW SPECIFIED TOPSOIL DEPTH TO OBTAIN THE SOIL VOLUME DEPTH REQUIRED.
- REFER TO SOIL VOLUME MATRIX AND PLANS FOR AREA WHERE TREE SOIL VOLUMES ARE REQUIRED.



Ottawa TITLE: PLANTING TRENCH WELL DRAINED SOILS DATE: MAY 2001
REV: JAN 2017
DWG No: L1

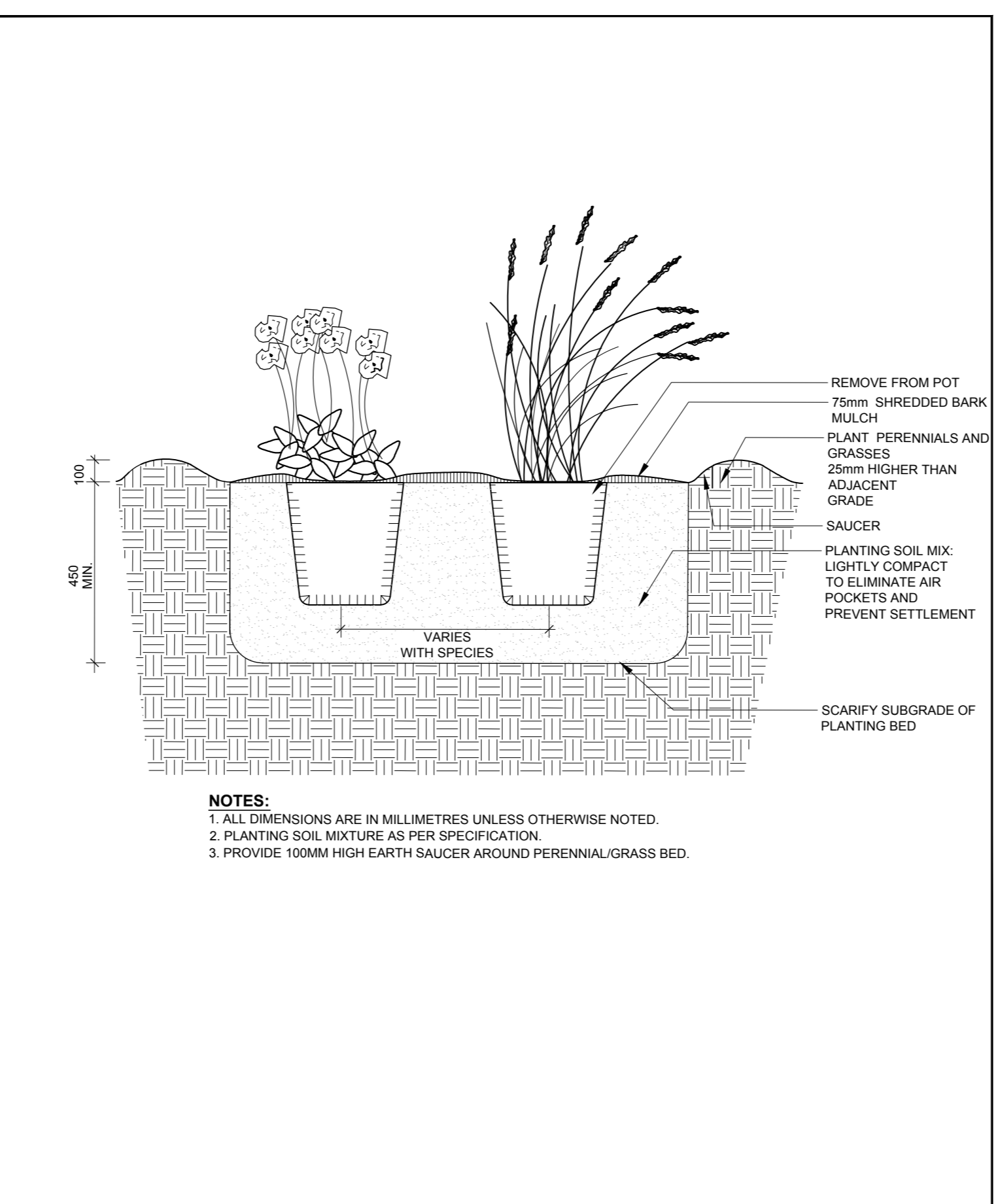


Ottawa TITLE: PLANTING PIT POORLY DRAINED SOILS DATE: MAY 2001
REV: FEB 2017
DWG No: L6

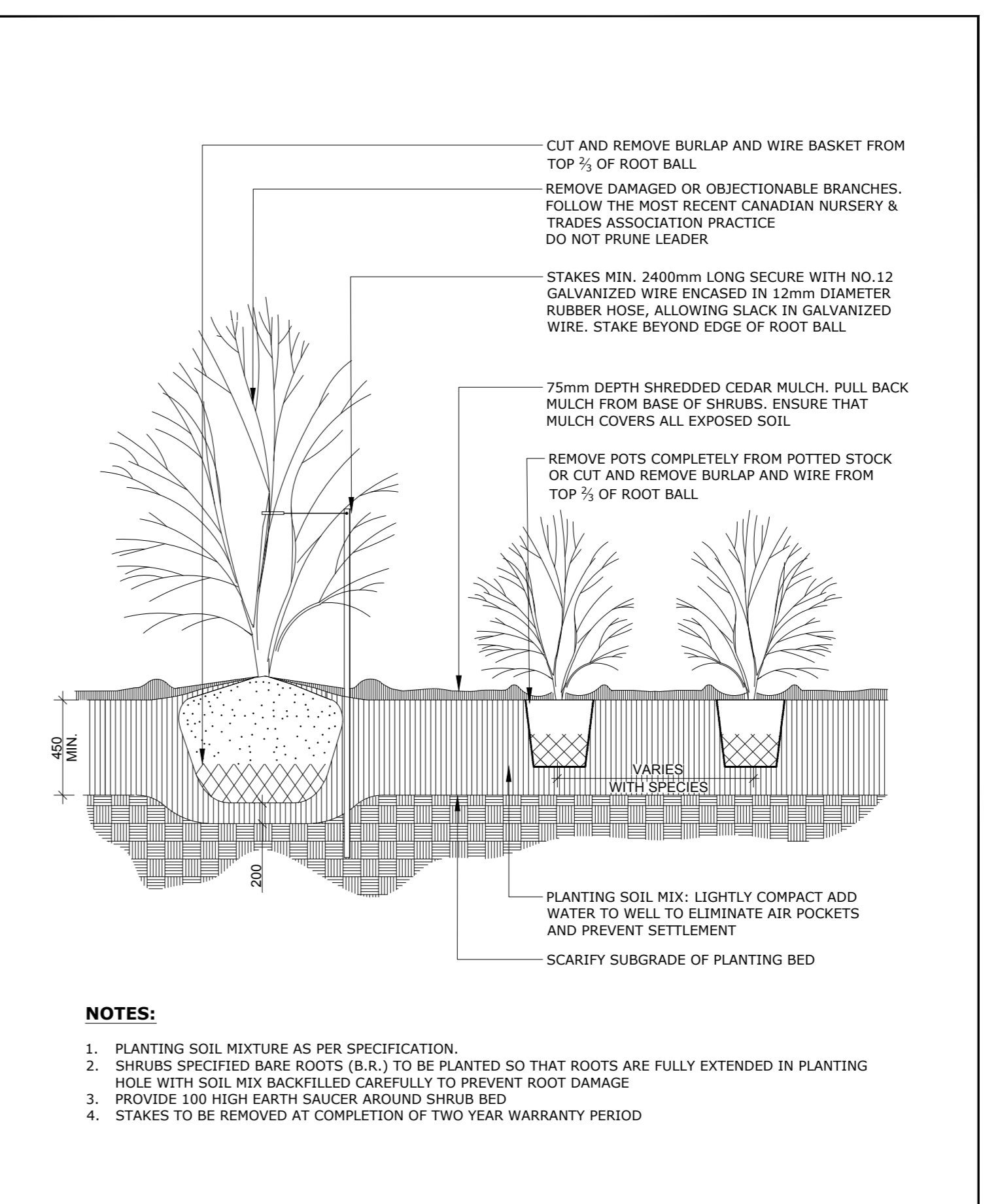


Ottawa TITLE: UNIT PAVING - ON GRANULAR BASE DATE: MAY 2001
REV: FEB 2016
DWG No: SC9

ADDITIONAL NOTES FOR NUMBER 5: PRECAST PAVERS IN PEDESTRIAN AREAS WHERE NORMAL SNOW REMOVALS ARE DONE IS TO RECEIVE A MINIMUM 200mm GRANULAR 'A'. FURTHER ADJUSTMENTS TO BE SPECIFIED IN RELATION TO SITE CONDITIONS AND GEOTECHNICAL RECOMMENDATIONS.



Ottawa TITLE: PERENNIAL AND ORNAMENTAL GRASS PLANTING DATE: JAN 2015
REV:
DWG No: L21



Ottawa TITLE: CONTINUOUS SHRUB BED PLANTING DATE: FEB 2013
REV: FEB 2014
DWG No: L17

6		
5		
4		
3	Issued for Site Plan Application	2023/08/31
2	Issued for Site Plan Application	2023/06/30
1	Issued for Site Plan Application	2022/12/21

ARCHITECT: CONSULTANT

NORTH CONSULTANT

PROJECT / LOCATION
4-Storey Mixed Use Building
8743169 Canada Ltd
2663 Innes Road
Ottawa, Ontario

SHEET NAME:
DETAILS

DATE: DESIGNED BY / CONDU PAR M.R.	CHECKED BY / VERIFIE PAR M.R.
DRAWN BY / DESINE PAR T.F.	SCALE/ECHELLE
PROJECT NO. 22-1704	SHEET NO. L-03.