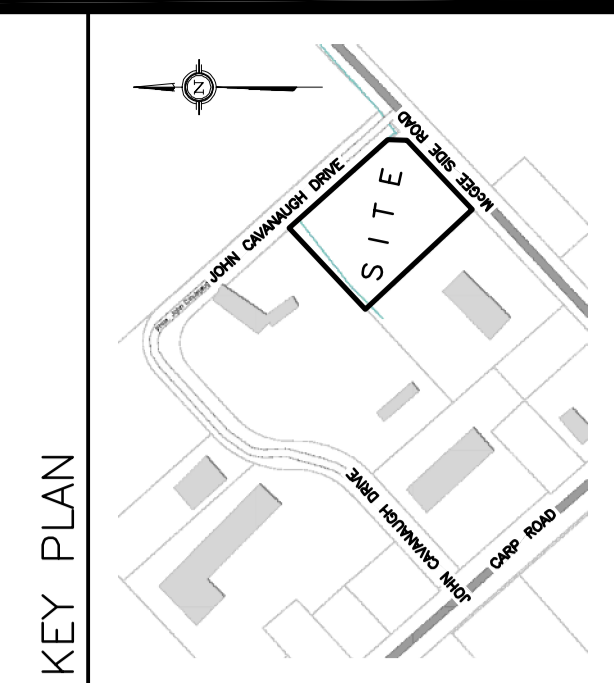


OWNER:
 STOKED INDUSTRIES INC
 14 KNOLL TERRACE,
 NEPEAN ON
 K2J 2K6

DRAWING LEGEND

INVERT OF PIPE	INVT
SANITARY SEWER	SAN
WATER LINE	WL
EAVE TROUGH DOWNSPOUT	DS
EXISTING GRADE ELEVATION	+67.89
PROPOSED GRADE ELEVATION	2%
EXISTING SLOPE OF GRADE	2%
PROPOSED SLOPE OF GRADE	T.O.S
TOP OF SLOPE	B.O.S
BOTTOM OF SLOPE
CENTERLINE OF SWALE	---
SILT BARRIER FENCE	---
PROPERTY LINE	---
150mm CURB/DEPRESSED CURB	---
LIGHT-DUTY PAVEMENT	---
HEAVY-DUTY PAVEMENT	---
CONCRETE	---
LANDSCAPE	---
CRITICAL ROOT ZONE	C.R.Z
FIRST FLOOR ELEVATION	FFL
UNDERSIDE OF FOOTING	USF
EMERGENCY OVERLAND FLOW	↑



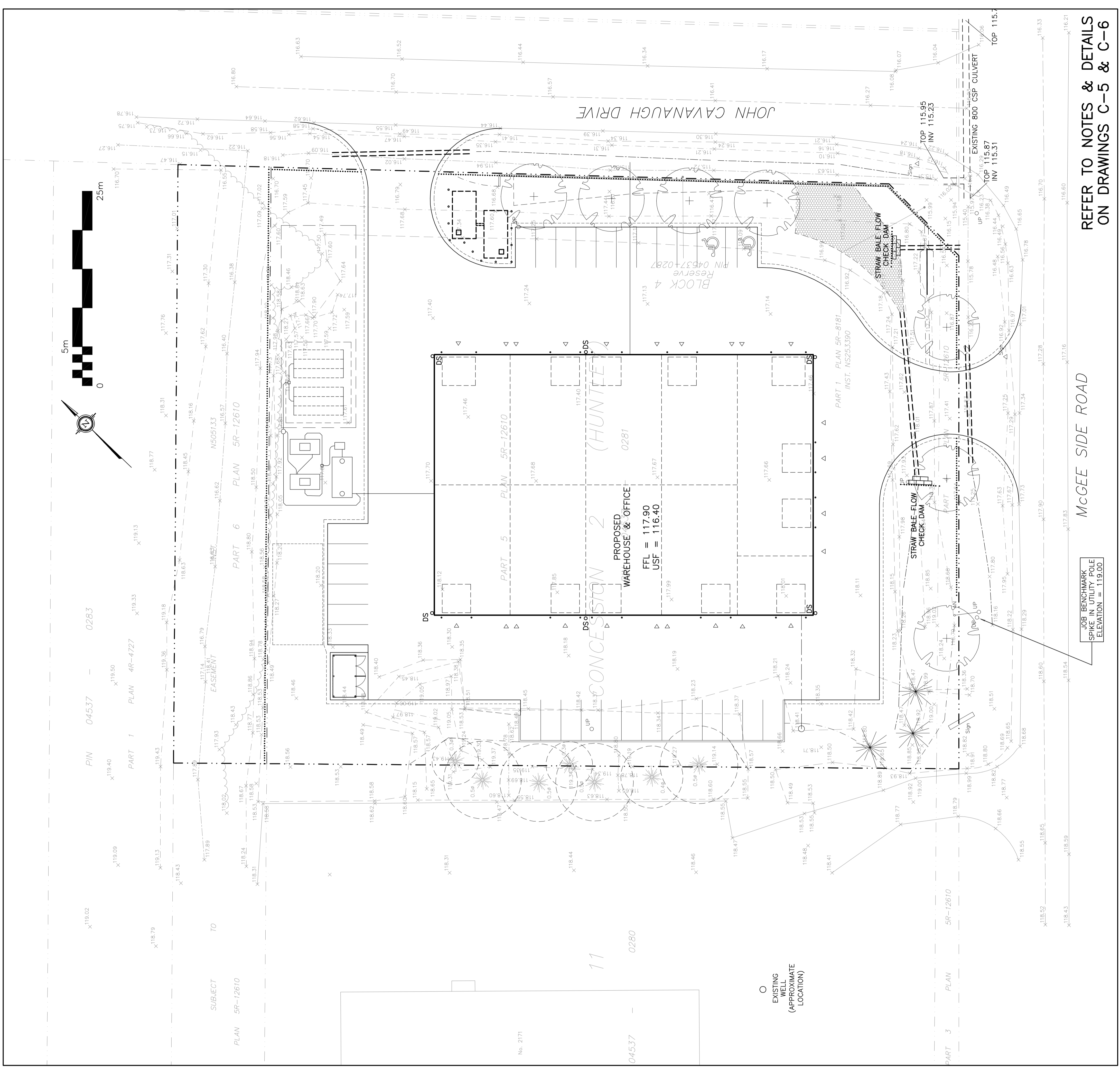
No.	DATE	REVISION
7	AUG 10-23	RE-ISSUED FOR APPROVAL
6	JUN 29-23	RE-ISSUED FOR APPROVAL
5	JUN 23-23	ISSUED FOR COORDINATION
4	APR 19-23	ISSUED FOR CLIENT REVIEW
3	JUL 26-21	RE-ISSUED FOR APPROVAL
2	JUN 14-21	RE-ISSUED FOR APPROVAL
1	MAR 12-21	ISSUED FOR APPROVAL

D. B. GRAY ENGINEERING INC.
 Surveyor/Engineer - Grading & Drainage - Storm & Sanitary Sewers - Erosion
 700 Long Point Circle
 Ottawa, Ontario
 613-425-8044
 dgray@dbgrayengineering.com

Project
OFFICE & WAREHOUSE
2167 MCGEE SIDE ROAD
 OTTAWA, ONTARIO

Drawing Title
EROSION & SEDIMENT CONTROL PLAN

Engineer's Seal
 Drawn: D.B.G.
 Hour: Scale: 1:250
 Vert. Scale:
 Date: APR 19-23
 17016502
 23024
 Drawing No. **C-4**
 of **7**
 NOT VALID UNLESS SIGNED & DATED



REFER TO NOTES & DETAILS
 ON DRAWINGS C-5 & C-6

MCGEE SIDE ROAD

JOB BENCHMARK
 SPIKE IN UTILITY POLE
 ELEVATION = 119.00

EXISTING WELL
 (APPROXIMATE LOCATION)