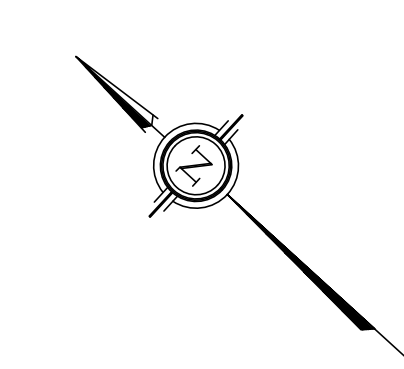
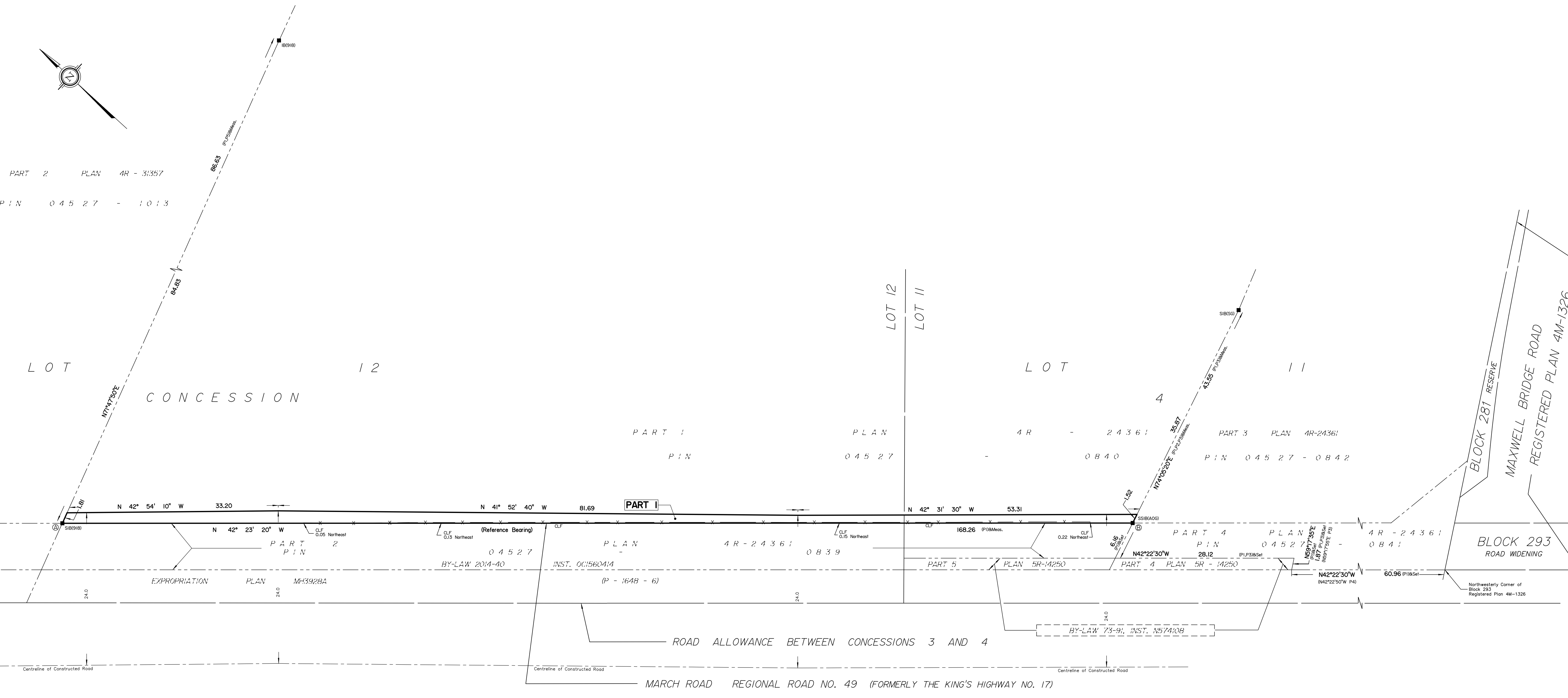


SCHEDULE				
AREA (Sq.m)	PART	LOT	CONCESSION	PIN
258	1	PART OF 11 & 12	4	PART OF 04527 - 0840



PART 2 PLAN 4R - 31357
PIN 04527 - 1013



PLAN OF SURVEY OF
PART OF LOTS 11 AND 12
CONCESSION 4
GEOGRAPHIC TOWNSHIP OF MARCH
CITY OF OTTAWA
Surveyed by Annis, O'Sullivan, Vollebek Ltd.

Scale 1 : 300
12 9 6 3 0 6 12 Metres

The intended plot size of the plan is 1067 mm in width by 610 mm in height when plotted at a scale of 1:300.

Metric
DISTANCES AND COORDINATES SHOWN ON THIS PLAN ARE IN METRES AND CAN BE CONVERTED TO FEET BY DIVIDING BY 0.3048.

Surveyor's Certificate
I CERTIFY THAT:
1. This survey and plan are correct and in accordance with the Surveys Act, the Surveyors Act and the Land Titles Act and the regulations made under them.
2. The survey was completed on the ___ day of _____, 2023.
Date _____ E. H. Herveyer
Ontario Land Surveyor

This plan of survey relates to AOLS Plan Submission Form Number V-

- Notes & Legend
- Denotes
 - Survey Monument Planted
 - Survey Monument Found
 - SIB Standard Iron Bar
 - SSIB Short Standard Iron Bar
 - IB Iron Bar
 - (WIT) Witness
 - Meos. Measured
 - (AOG) Annis, O'Sullivan, Vollebek Ltd.
 - (PI) Plan 4R-24361
 - (P2) (AOG) Plan July 10, 2015
 - (P3) Plan 5R-14250
 - (P4) Registered Plan 4M-1326
 - (P5) Plan 4R-31357
 - CLF Chain Link Fence

Distances shown on this plan are ground distances and can be converted to grid distances by multiplying by the combined scale factor of 0.999911.
Bearings are grid, derived from the northerly limit of Part 2 Plan 4R-24361 having a bearing of N 42° 23' 20" W and are referenced to Specified Control Points 01919680037 and 01919791051, MTM Zone 9 (76°30' West Longitude) NAD-83 (original).
For bearing comparisons, a rotation of 0°23'30" counter-clockwise was applied to bearings on plan P3.
Coordinates are derived from Can-Net 2016 Real Time Network GPS observations referenced to Specified Control Points 01919680037 and 01919791051, MTM Zone 9 (76°30' West Longitude) NAD-83 (original).
Coordinate values are to urban accuracy in accordance with O. Reg. 216/10.

.01919680037	Northing	5023507.89	Eastings	351533.87
.01919791051	Northing	5025699.51	Eastings	343633.72
.Point A	Northing	5024633.02	Eastings	348771.86
.Point B	Northing	5024508.76	Eastings	348885.28

Caution: Coordinates cannot, in themselves, be used to re-establish corners or boundaries shown on this plan.