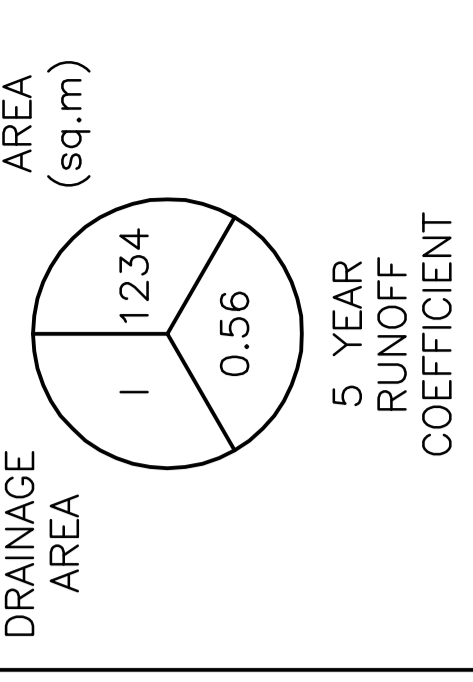


POST-DEVELOPMENT DRAINAGE PLAN
 Drawing Title

Project
PROPOSED 2 STOREY VOLVO DEALERSHIP
1328 MICHAEL STREET
 OTTAWA, ONTARIO

D. B. GRAY ENGINEERING INC.
 700 Long Point Circle
 Ottawa, Ontario
 dlgray@dbgrayengineering.com
 613-425-8044

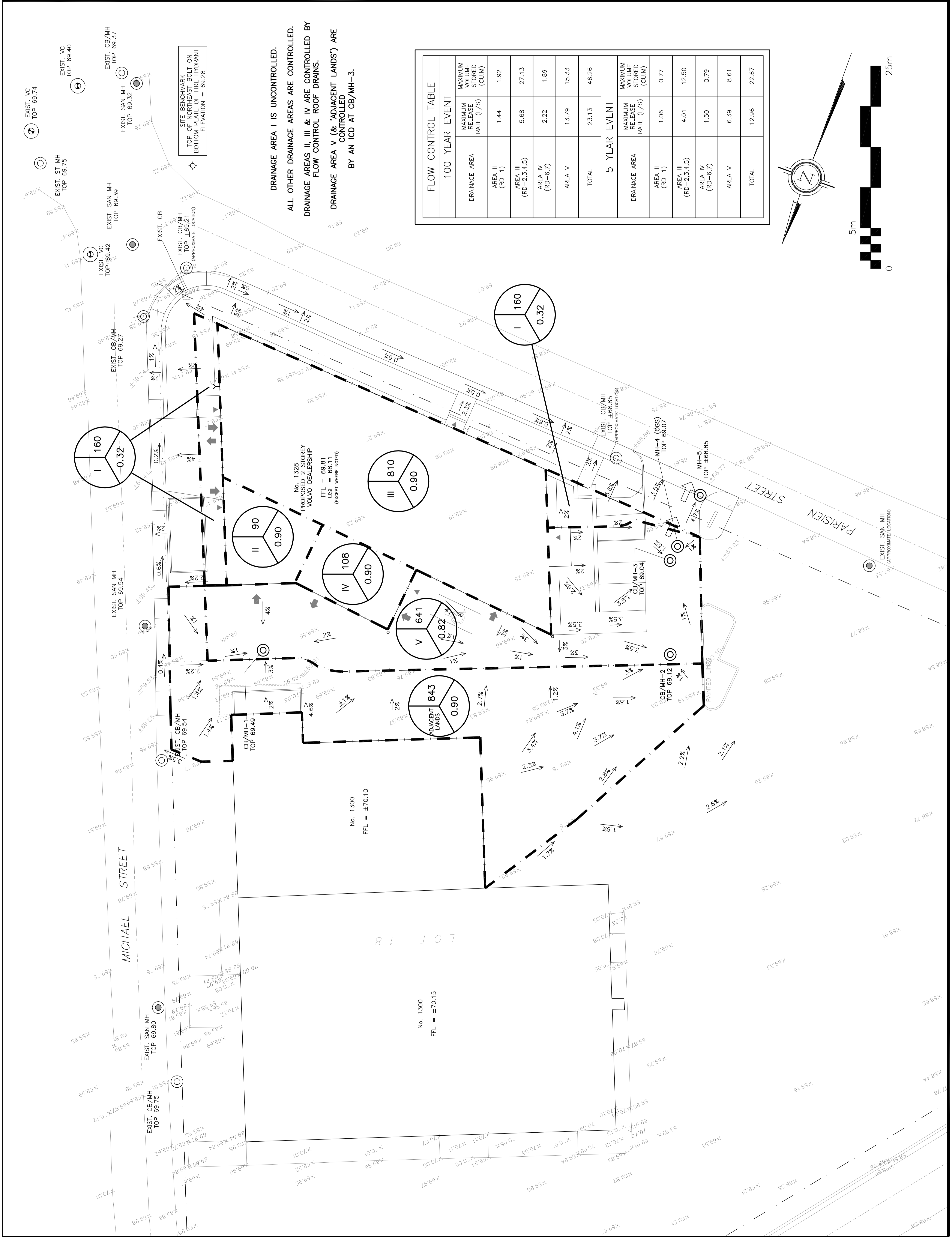
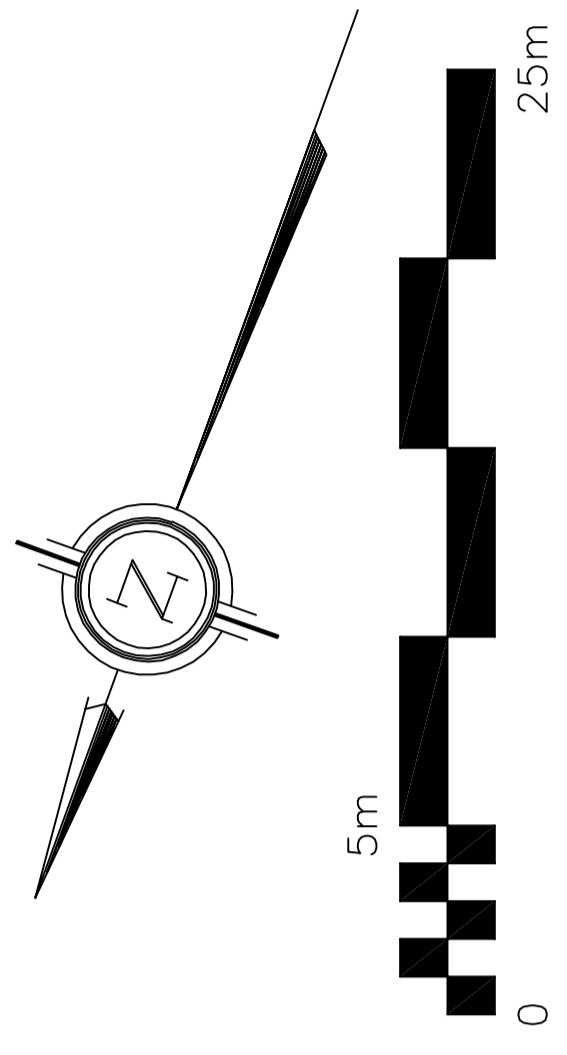
No.	DATE	REVISION
1	JAN 11-22	ISSUED FOR COORDINATION
2	JAN 12-22	ISSUED FOR APPROVAL
3	JUL 28-22	RE-ISSUED FOR APPROVAL
4	JAN 25-23	RE-ISSUED FOR APPROVAL
5	JUL 24-23	RE-ISSUED FOR APPROVAL



LEGEND

100 YEAR EVENT		
DRAINAGE AREA	MAXIMUM RELEASE RATE (L/S)	MAXIMUM VOLUME STORED (CU.M)
AREA II (RD-1)	1.44	1.92
AREA III (RD-2,3,4,5)	5.68	27.13
AREA IV (RD-6,7)	2.22	1.89
AREA V	13.79	15.33
TOTAL	23.13	46.26
5 YEAR EVENT		
DRAINAGE AREA	MAXIMUM RELEASE RATE (L/S)	MAXIMUM VOLUME STORED (CU.M)
AREA II (RD-1)	1.06	0.77
AREA III (RD-2,3,4,5)	4.01	12.50
AREA IV (RD-6,7)	1.50	0.79
AREA V	6.39	8.61
TOTAL	12.96	22.67

DRAINAGE AREA I IS UNCONTROLLED.
 ALL OTHER DRAINAGE AREAS ARE CONTROLLED.
 DRAINAGE AREAS II, III & IV ARE CONTROLLED BY FLOW CONTROL ROOF DRAINS.
 DRAINAGE AREA V (& 'ADJACENT LANDS') ARE CONTROLLED BY AN ICD AT CB/MH-3.



No. 1328
 PROPOSED 2 STOREY
 VOLVO DEALERSHIP
 FFL = 69.81
 USF = 68.11
 (EXCEPT WHERE NOTED)

No. 1300
 FFL = ±70.10

No. 1300
 FFL = ±70.15

