

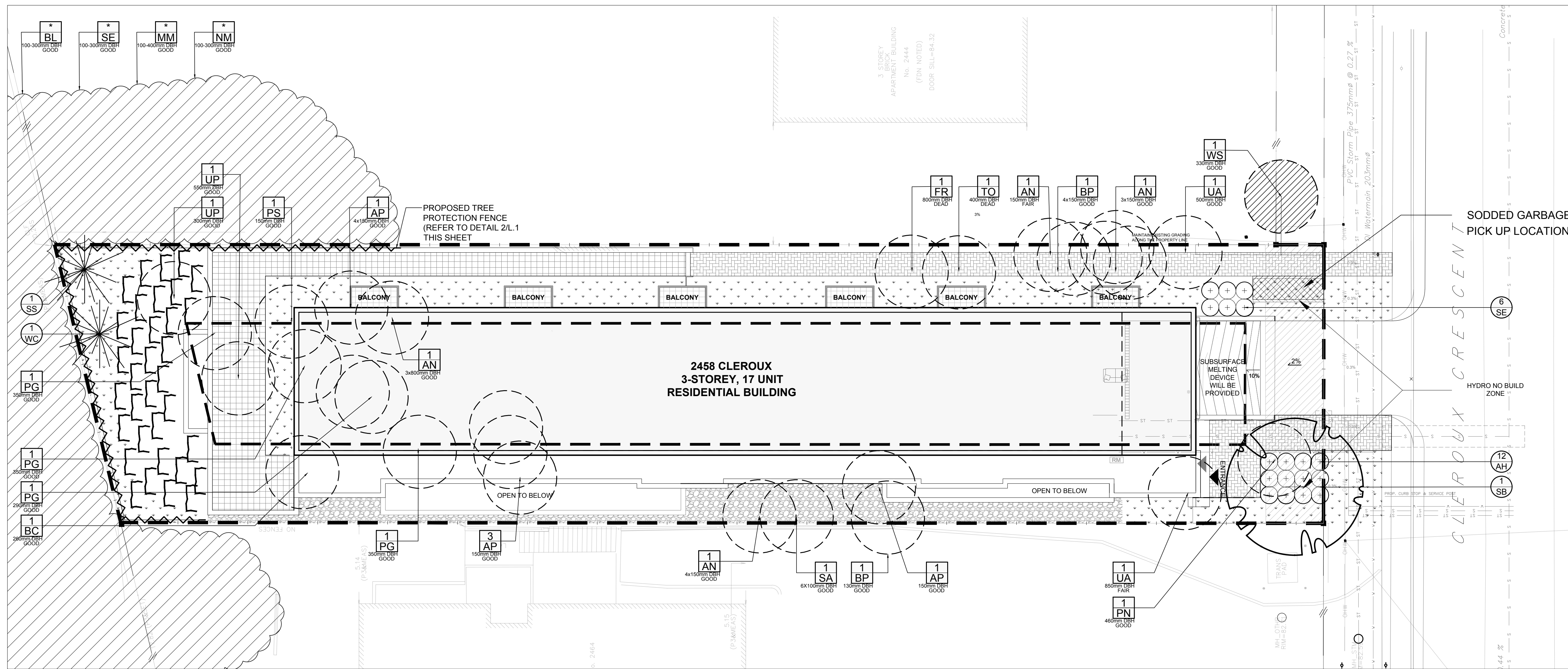
CLIENT:  
**Mark Nakhle**  
 11784005 Canada Inc.  
 12 Southland Crescent  
 Ottawa ON K1T 0J1

CONSULTANTS  
 ARCHITECTS:  
**P2 concepts**  
 739 ROSEWOOD AVE., UNIT 201  
 OTTAWA, ONTARIO, K1V 6W8

CIVIL ENGINEERS:  
**ARCH-NOVA Design Inc.**  
 45 Banner Road NEPEAN ON K2H 8X5  
 613-702-3403 contact@archnova.ca

- LEGEND
- PROPOSED PRECAST CONCRETE PAVERS TYPE I
  - PROPOSED PRECAST CONCRETE PAVERS TYPE II
  - PROPOSED DECIDUOUS TREE
  - PROPOSED CONIFEROUS TREE
  - PROPOSED SHRUBS
  - PROPOSED SOD
  - PROPOSED RIVERSTONE MULCH
  - GROUP OF EXISTING TREES TO REMAIN
  - EXISTING TREE TO REMAIN
  - EXISTING TREE TO BE REMOVED
  - PROPOSED TREE PROTECTION FENCE

- GENERAL NOTES:
- It is the responsibility of the appropriate contractor or official to report any errors, omissions or discrepancies on this plan with actual site conditions to the Landscape Architect before proceeding with construction.
  - The contractor is to notify all utility companies and authorities prior to any excavation and ascertain locations of underground services.
  - The contractor is to reinstate all areas and items damaged as a result of construction activity.
  - The contractor is to comply with all pertinent codes and by-laws.
  - The contractor is to maintain a positive surface run-off throughout the entire construction period.
  - The Landscape Architect is not responsible for subsurface conditions.
  - The contractor is to identify all existing trees to remain on site with the Landscape Architect prior to construction.
  - The contractor is to stake the proposed location of all plant material in conjunction with the Landscape Architect prior to excavation.
  - Minimum distances for selected deciduous trees are as follows:
    - Building Foundations 7.5m
    - Sidewalks 1.5m
    - Public Streets 2.5m
    - Underground Infrastructure 1.5m
  - All trees within 1m of underground utility trenches are to be excavated by hand.
  - Remove all protective wrapping from tree trunks after installation.
  - Staking of trees shall only be performed if necessary.
  - Ensure that mulch is pulled back a min. distance of 75mm from base of tree trunk.



1 TREE CONSERVATION REPORT & LANDSCAPE PLAN  
 SCALE 1:150

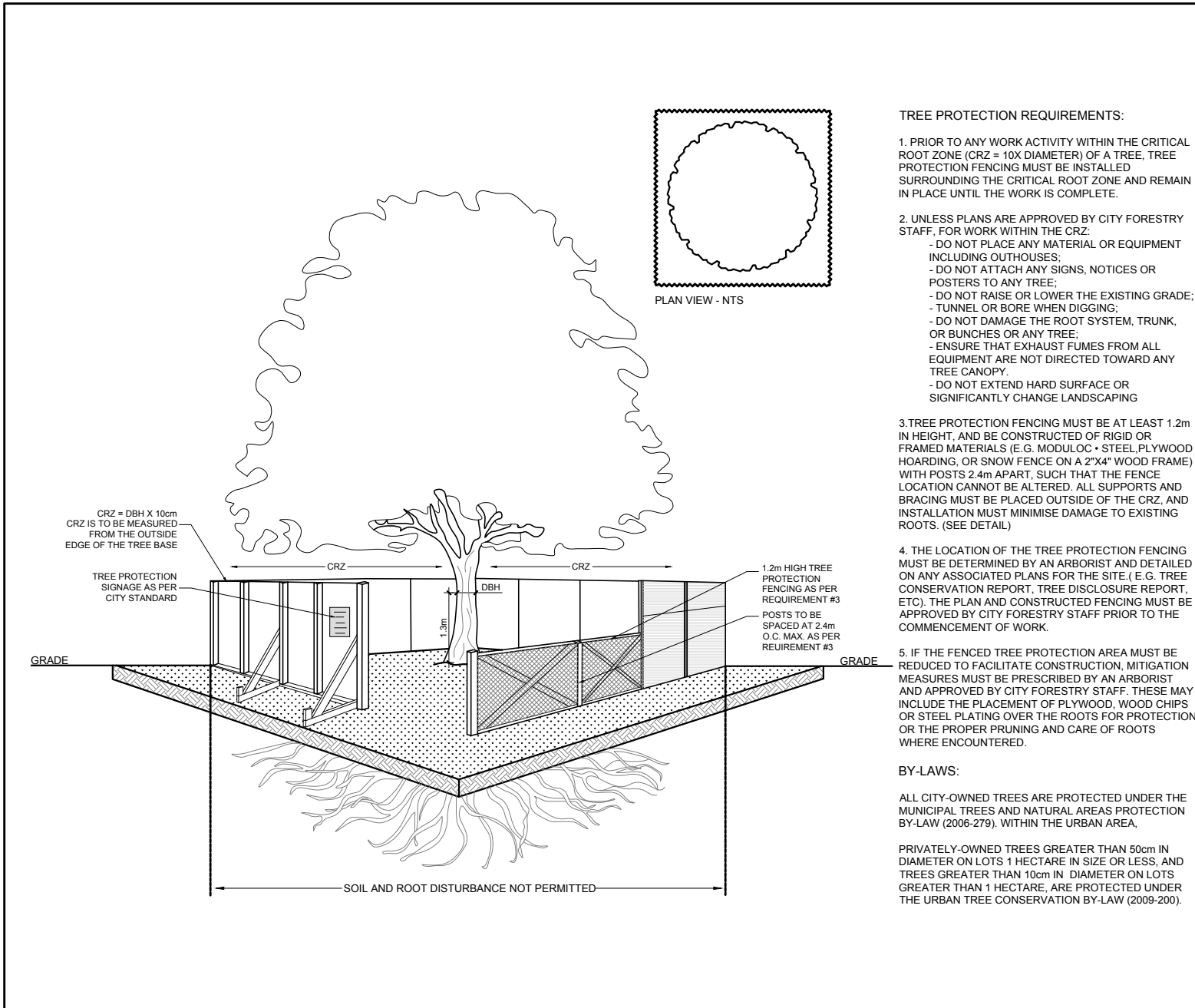
KEY	QTY.	BOTANICAL NAME	COMMON NAME	SIZE	CONDITION	REMARKS	OWNERSHIP
AN	4	<i>Acer negundo</i>	Manitoba Maple	150-800mm DBH	FAIR-GOOD	To be removed	2458 Cleroux Crescent
AP	5	<i>Acer platanoides</i>	Norway Maple	150mm DBH	GOOD	To be removed	2458 Cleroux Crescent
BC	1	<i>Prunus serotina</i>	Black Cherry	260mm DBH	GOOD	To be removed	2458 Cleroux Crescent
BL	1	<i>Prunus serotina</i>	Black Cherry	100-300mm DBH	GOOD	To remain	Public property / 2444 & 2464 Cleroux
BP	1	<i>Betula papyrifera</i>	White Birch	130-150mm DBH	GOOD	To be removed	2458 Cleroux Crescent
FR	1	<i>Fraxinus americana</i>	White Ash	800mm DBH	DEAD	To be removed	2458 Cleroux Crescent
MM	1	<i>Acer negundo</i>	Manitoba Maple	10-400mm DBH	GOOD	To remain	Public property / 2444 & 2464 Cleroux
NM	1	<i>Acer platanoides</i>	Norway Maple	100-300mm DBH	GOOD	To remain	Public property / 2444 & 2464 Cleroux
PG	4	<i>Picea glauca</i>	White Spruce	290-350mm DBH	GOOD	To be removed	2458 Cleroux Crescent
PN	1	<i>Pinus nigra</i>	Austrian Pine	460mm DBH	GOOD	To be removed	2458 Cleroux Crescent
PS	1	<i>Pinus strobus</i>	White Pine	150mm DBH	GOOD	To be removed	2458 Cleroux Crescent
SE	1	<i>Ulmus pumila</i>	Siberian Elm	100-300mm DBH	GOOD	To remain	Public property / 2444 & 2464 Cleroux
SA	1	<i>Salix spp.</i>	Willow	6x100mm DBH	GOOD	To be removed	2458 Cleroux Crescent
TO	1	<i>Thuja occidentalis</i>	White Cedar	400mm DBH	DEAD	To be removed	2458 Cleroux Crescent
UA	2	<i>Ulmus americana</i>	American Elm	500-850mm DBH	FAIR-GOOD	To be removed	2458 Cleroux Crescent
UP	2	<i>Ulmus pumila</i>	Siberian Elm	300-550mm DBH	GOOD	To be removed	2458 Cleroux Crescent
WS	1	<i>Picea glauca</i>	White Spruce	330mm DBH	GOOD	To remain	2444 Cleroux Crescent

\*DENOTES NUMEROUS

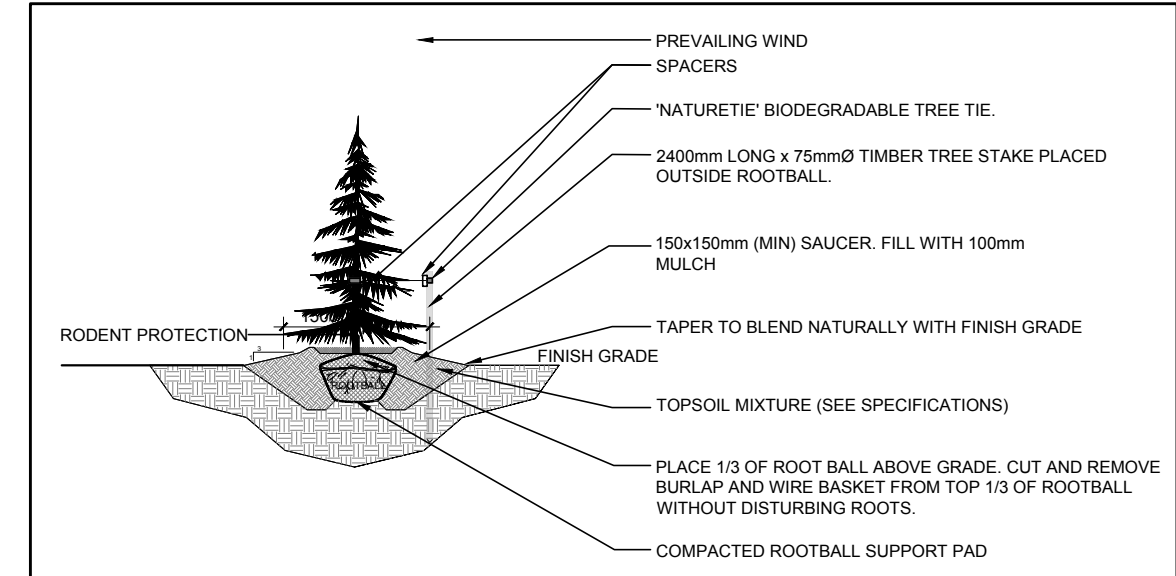
KEY	QTY.	BOTANICAL NAME	COMMON NAME	SIZE	CONDITION	REMARKS
SB	1	<i>Amelanchier canadensis</i>	Serviceberry	60mm cal.	B&B	Single leader
SS	1	<i>Picea omorika</i>	Serbian Spruce	1.8m HL	B&B	
WC	1	<i>Thuja occidentalis</i>	Eastern White Cedar		B&B	

**SHRUBS**

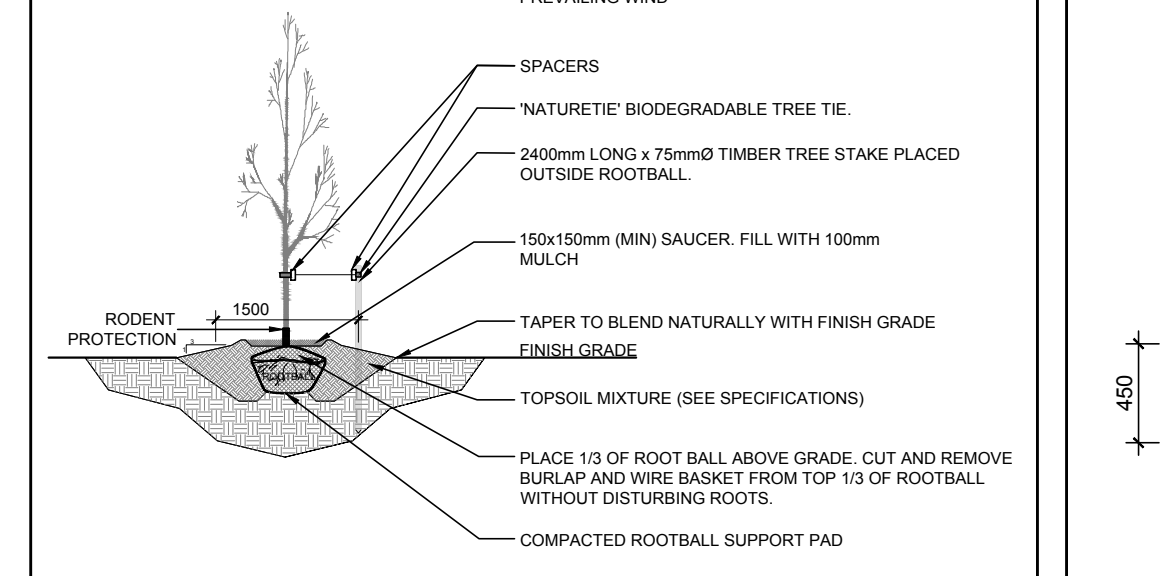
AH	12	<i>Hydrangea arborescens</i> 'Annabelle'	Annabelle Hydrangea	1 gallon pot	Potted	Space 1000mm o.c.
SE	6	<i>Sorbaria sorbifolia</i> 'Sem'	Sem False Spirea	600mm ht.	Potted	Space 1000mm o.c.



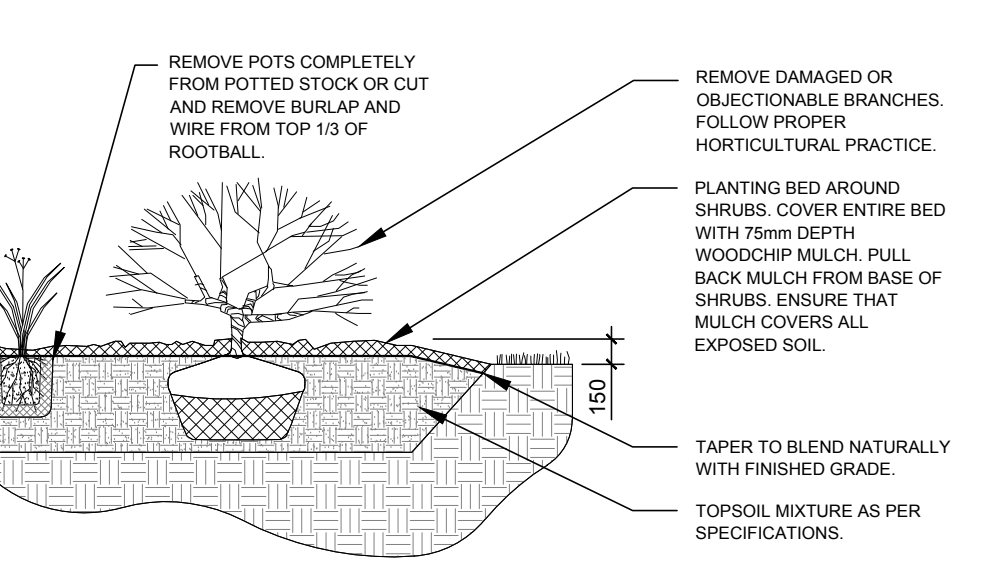
2 TREE PROTECTION FENCE  
 SCALE: NTS



3 CONIFEROUS TREE PLANTING  
 SCALE: NTS



4 DECIDUOUS TREE PLANTING  
 SCALE: NTS



5 SHRUB PLANTING  
 SCALE: NTS

No.	Issue	Date	DR	CK
5	RIVERSTONE DELETED FROM REAR YARD	04/11/2023	ML	JL
4	REVISED PER NEW SITE PLAN	04/06/2023	ML	JL
3	REVISED PER NEW SITE PLAN	03/23/2023	ML	JL
2	REVISED PER CITY COMMENTS	09/21/2022	ML	JL
1	ISSUED FOR DISCUSSION AND REVIEW	08/17/2022	ML	JL

**JAMES B. LENNOX & ASSOCIATES INC.**  
 LANDSCAPE ARCHITECTS  
 3332 CARLING AVE. OTTAWA, ONTARIO K2H 5A8  
 TEL: (613) 722-5168 Fax: (866) 343-3942

PROJECT  
 PROPOSED 17 UNIT RESIDENTIAL BUILDING  
 2458 CLEROUX CRESCENT, OTTAWA ON

DRAWING  
 TREE CONSERVATION REPORT &  
 LANDSCAPE PLAN

STAMP  
 AS SHOWN  
 START DATE  
 MARCH 2022  
 PROJECT NO.  
 22MIS2223

PROJECT NORTH  
 DRAWING NO.  
**L.1**  
 PLOT SIZE ARCH-D