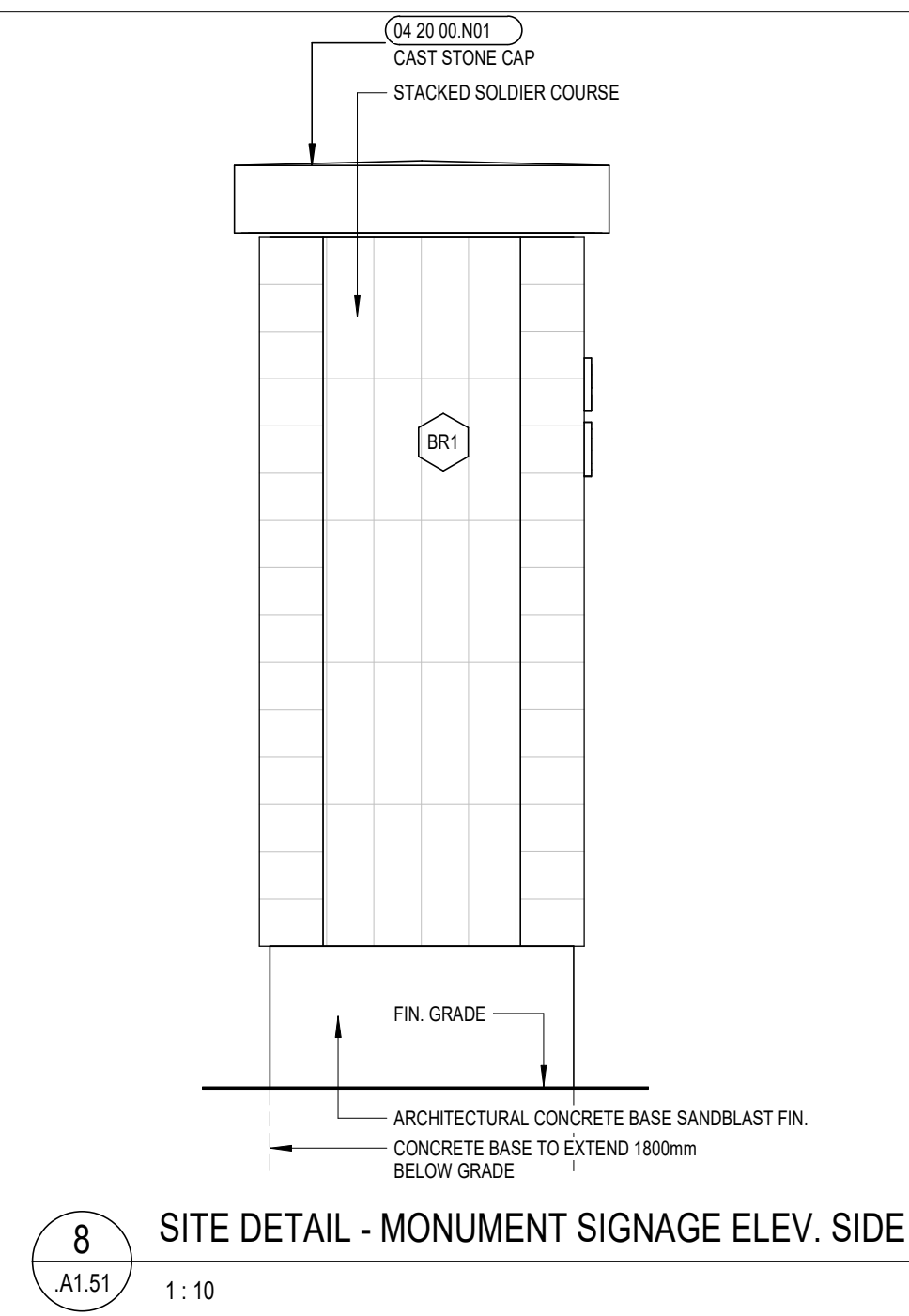
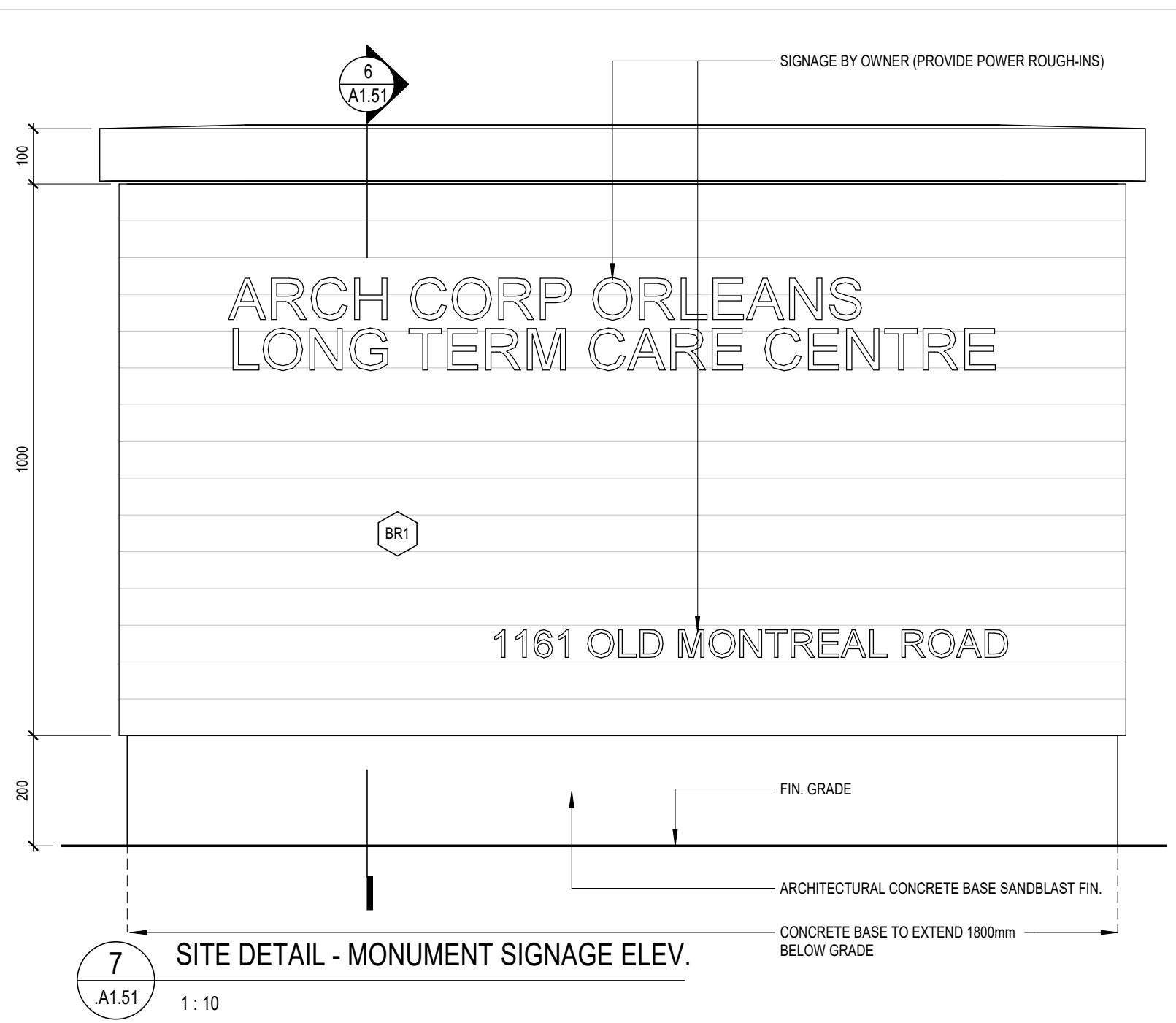


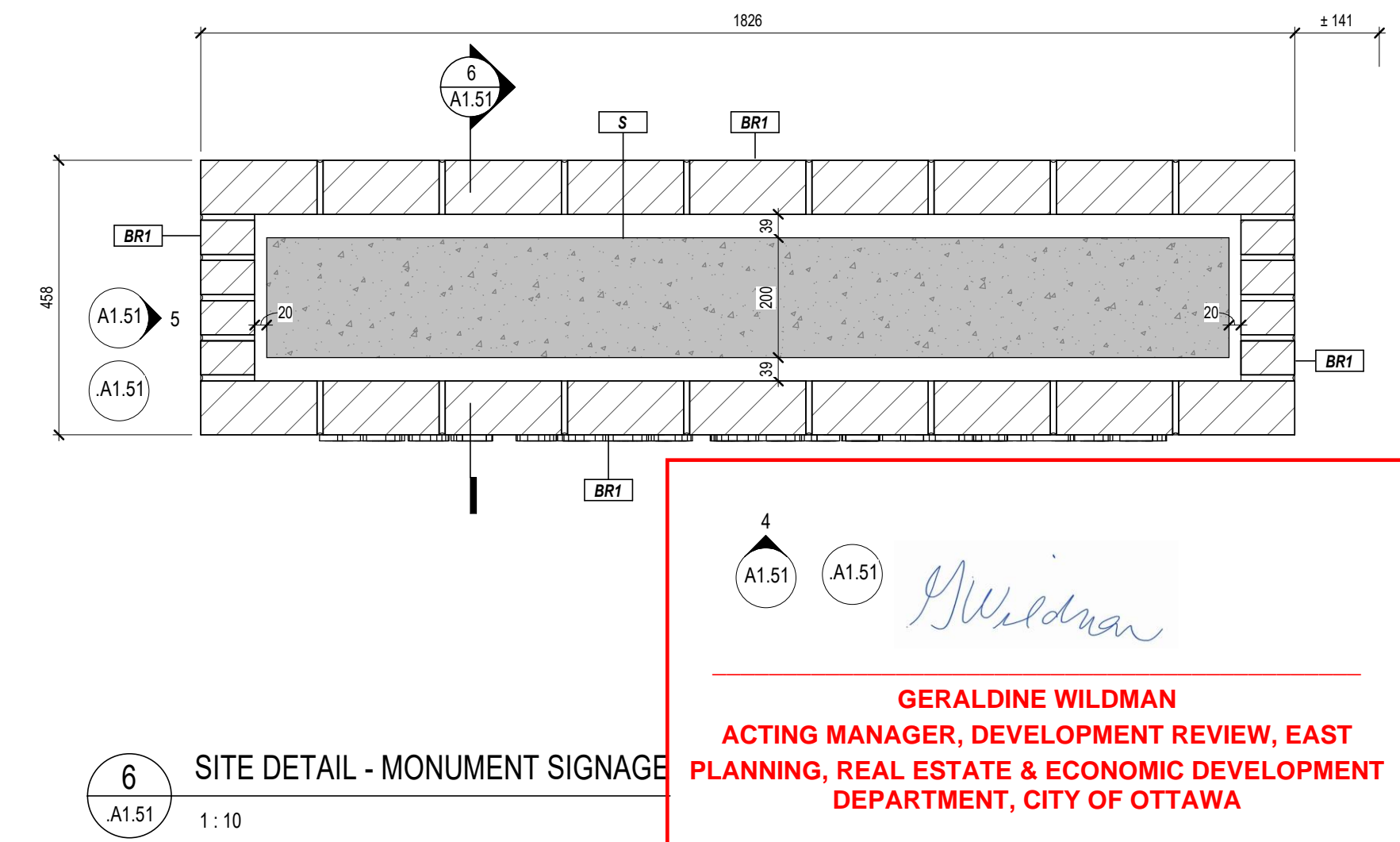
9 SITE DETAIL - MONUMENT SIGNAGE SECTION
A1.51 1:10




8 SITE DETAIL - MONUMENT SIGNAGE ELEV. SIDE
A1.51 1:10



7 SITE DETAIL - MONUMENT SIGNAGE ELEV.
A1.51 1:10



6 SITE DETAIL - MONUMENT SIGNAGE
A1.51 1:10


GERALDINE WILDMAN
 ACTING MANAGER, DEVELOPMENT REVIEW, EAST
 PLANNING, REAL ESTATE & ECONOMIC DEVELOPMENT
 DEPARTMENT, CITY OF OTTAWA



5 SITE SECTION
A1.51 1:200

APPROVED
 By Geraldine Wildman at 11:56 am, Jul 21, 2023

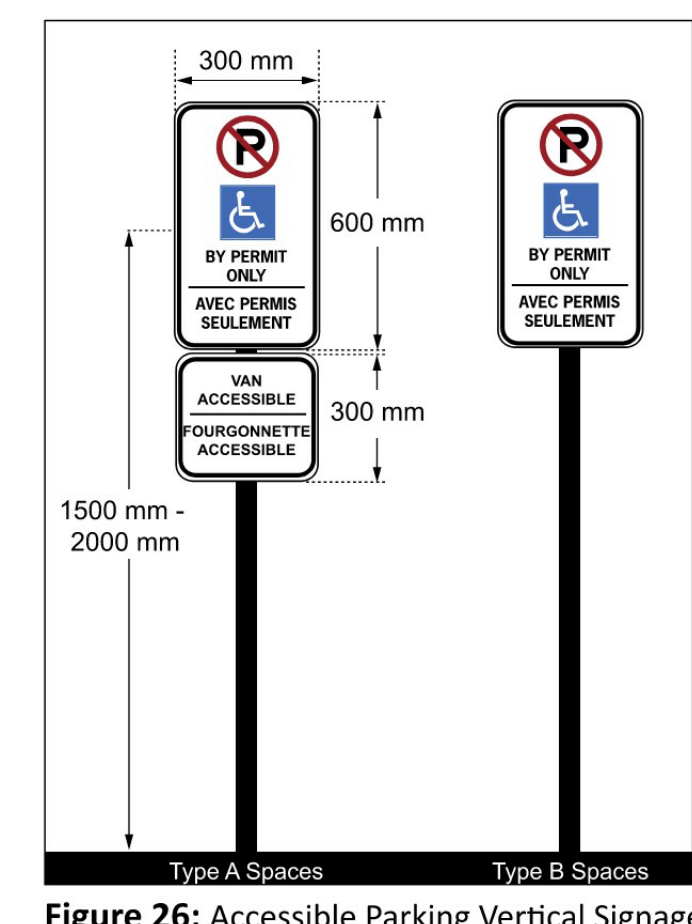


Figure 26: Accessible Parking Vertical Signage

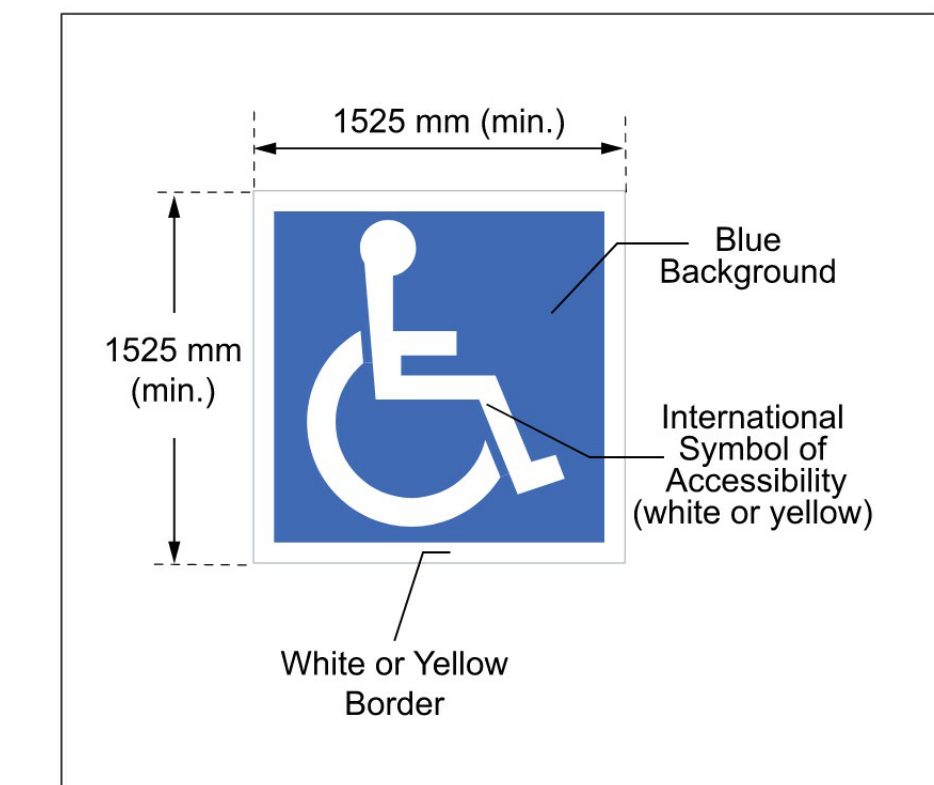
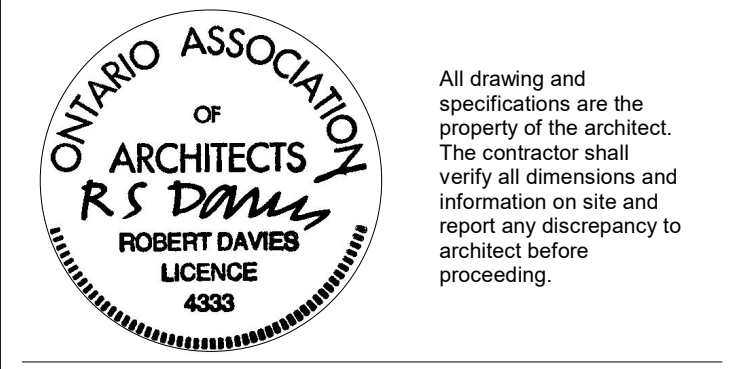


Figure 27: Accessible Parking Pavement Marking

4 ACCESSIBLE PARKING SIGNAGE
A1.51 1:2

17	2023/04/10	ISSUED FOR SPA RECORD SET	MSA
12	2023/01/27	RE-ISSUED FOR SITE PLAN CONTROL APPLICATION & ZONING BY-LAW AMENDMENT	MSA
8	2022/08/19	RE-ISSUED FOR SITE PLAN CONTROL APPLICATION & ZONING BY-LAW AMENDMENT	MSA
#	date:	revision:	by:

revisions



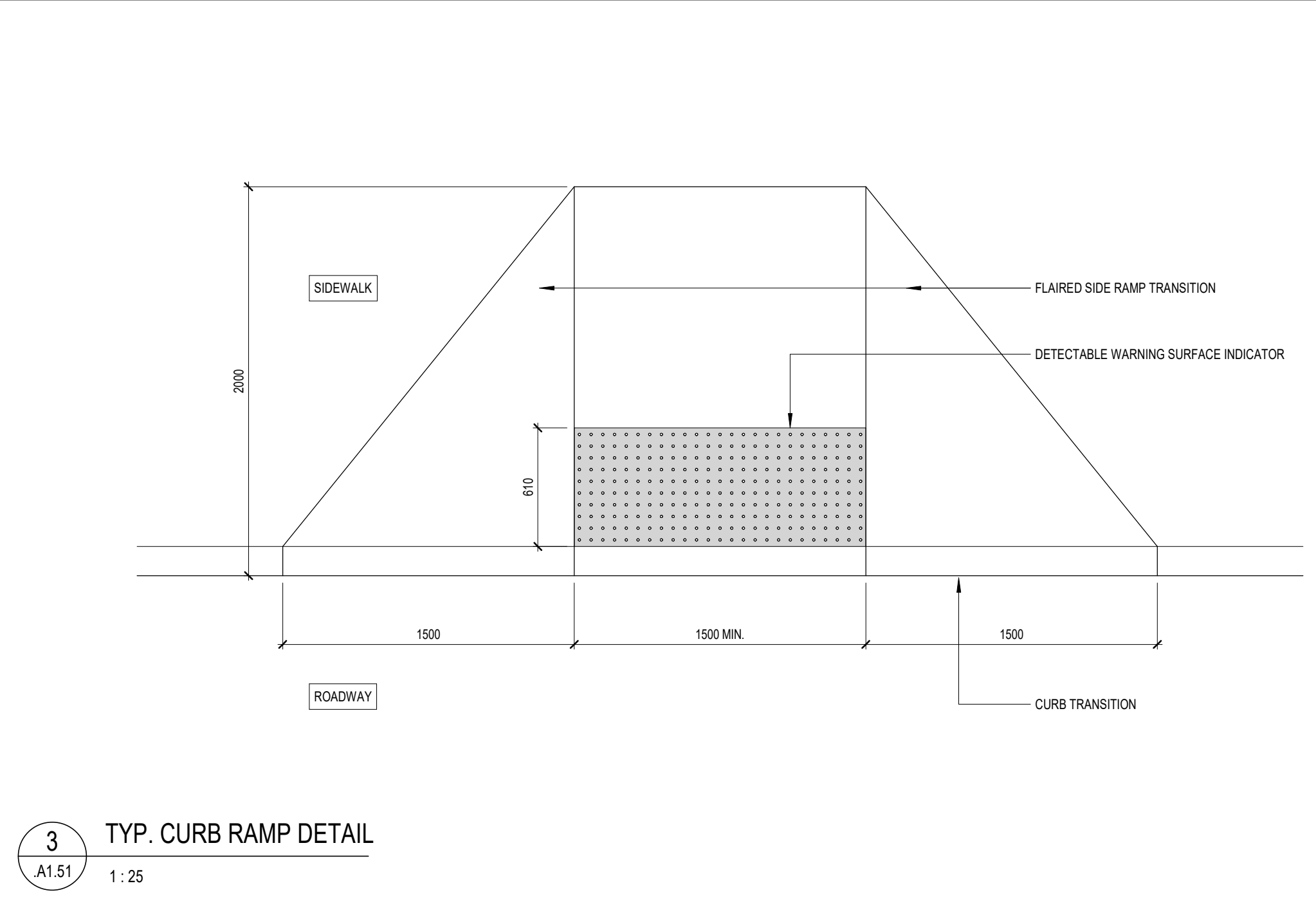
Arch Corp - Orleans

375 FAMILLE-LAPORTE AVE.
(FORMERLY 1161 OLD MONTREAL RD.)
ORLEANS, ONTARIO

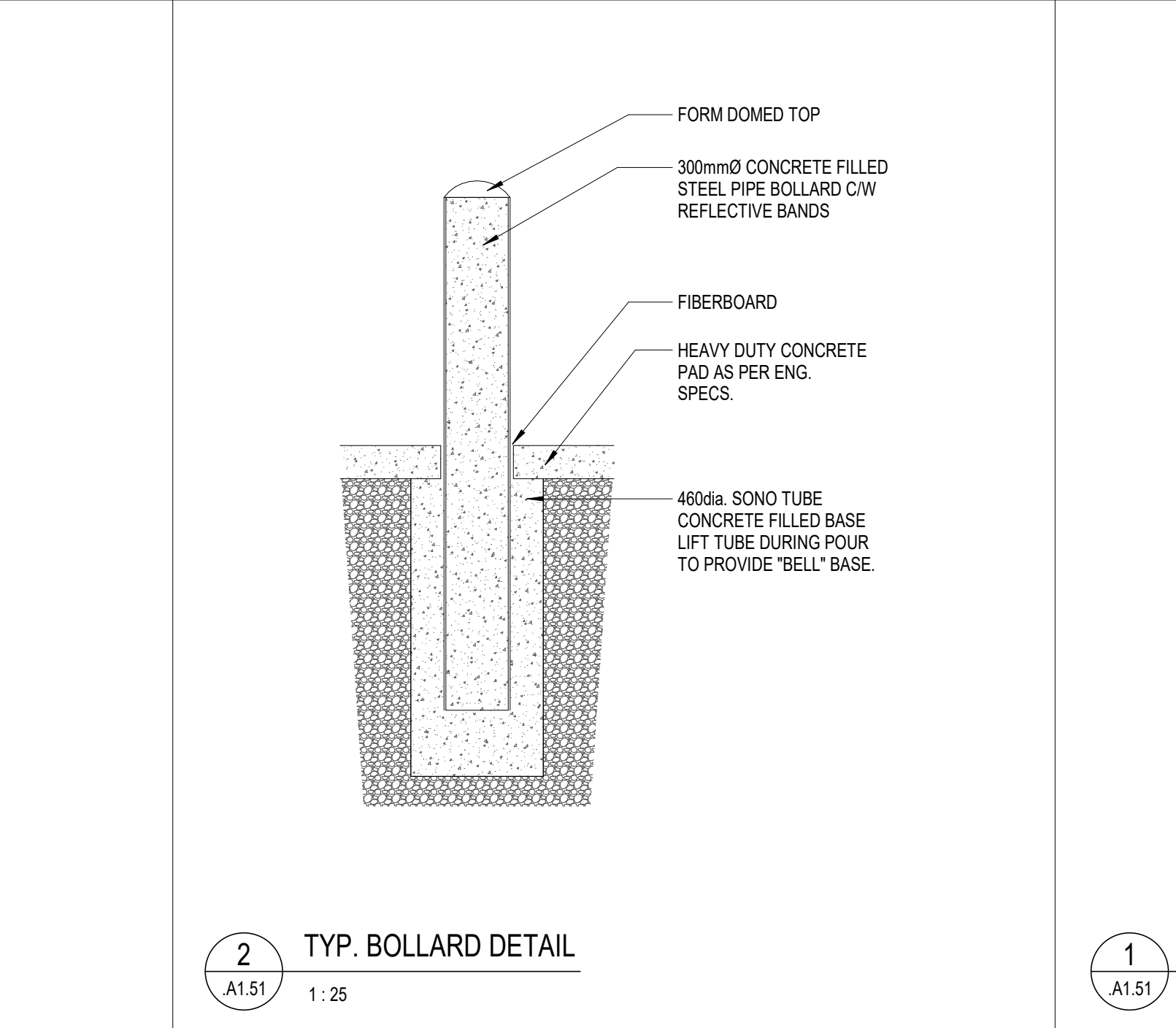
SITE DETAILS

scale: As indicated
 drawn by: MSA
 reviewed by: MSA
 job number: 21024
 plot date: 21-08-27
 drawing number:

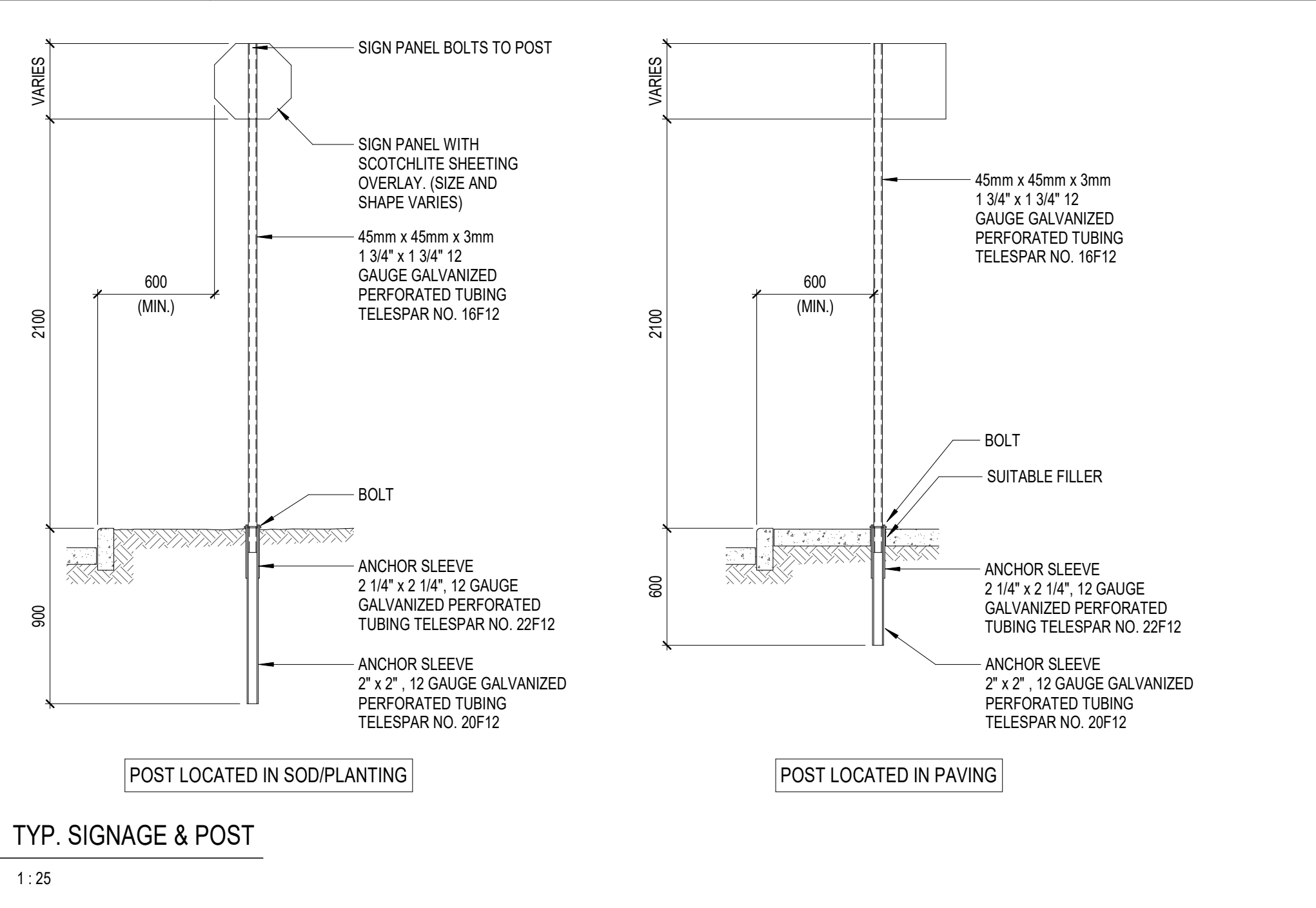
.A1.51



3 TYP. CURB RAMP DETAIL
A1.51 1:25



2 TYP. BOLLARD DETAIL
A1.51 1:25



1 TYP. SIGNAGE & POST
A1.51 1:25

2023-04-27 3:57:01 PM BIM 360://ArchCorp - Orleans.LT021024_Orleans_ARCH.rvt

D07-12-22-0068