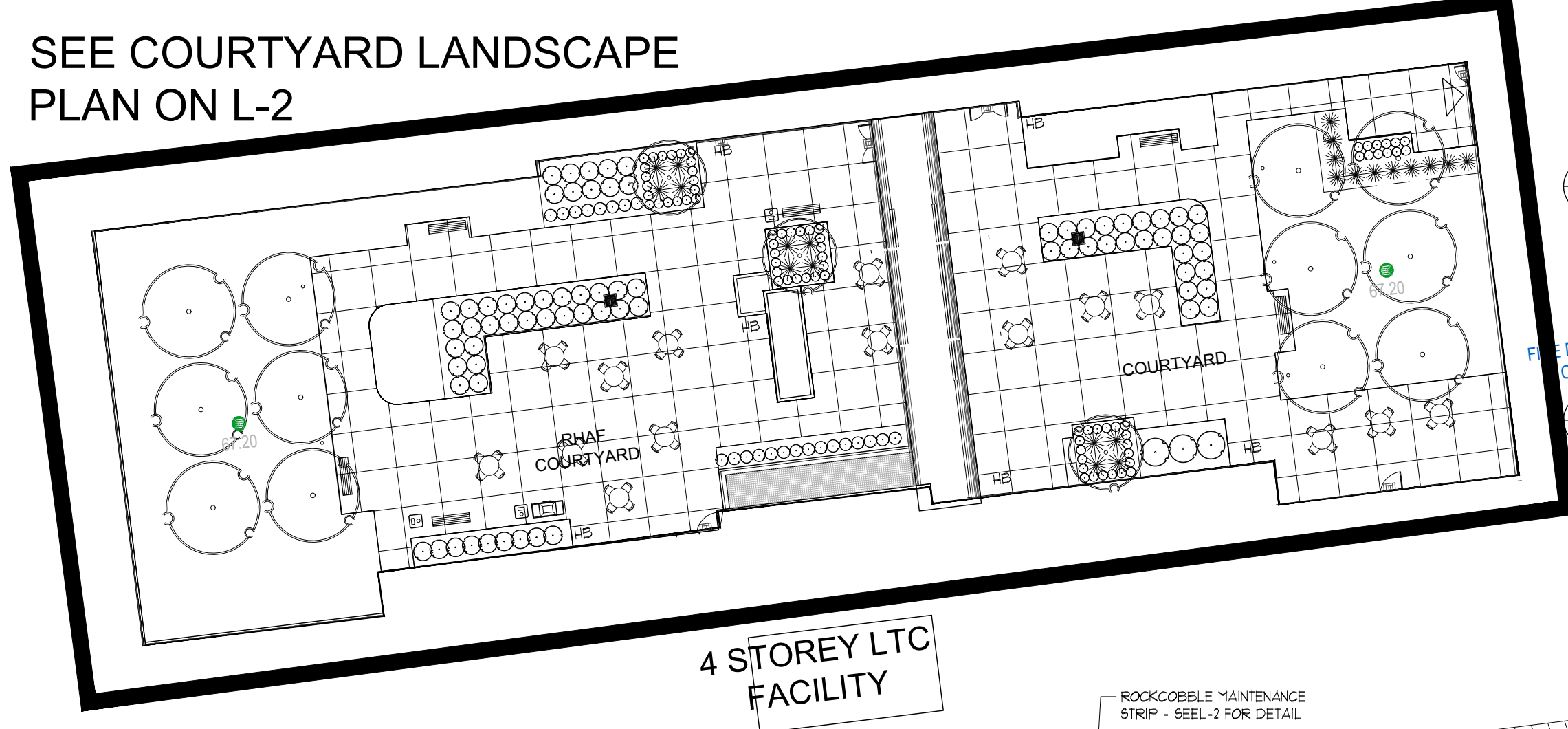
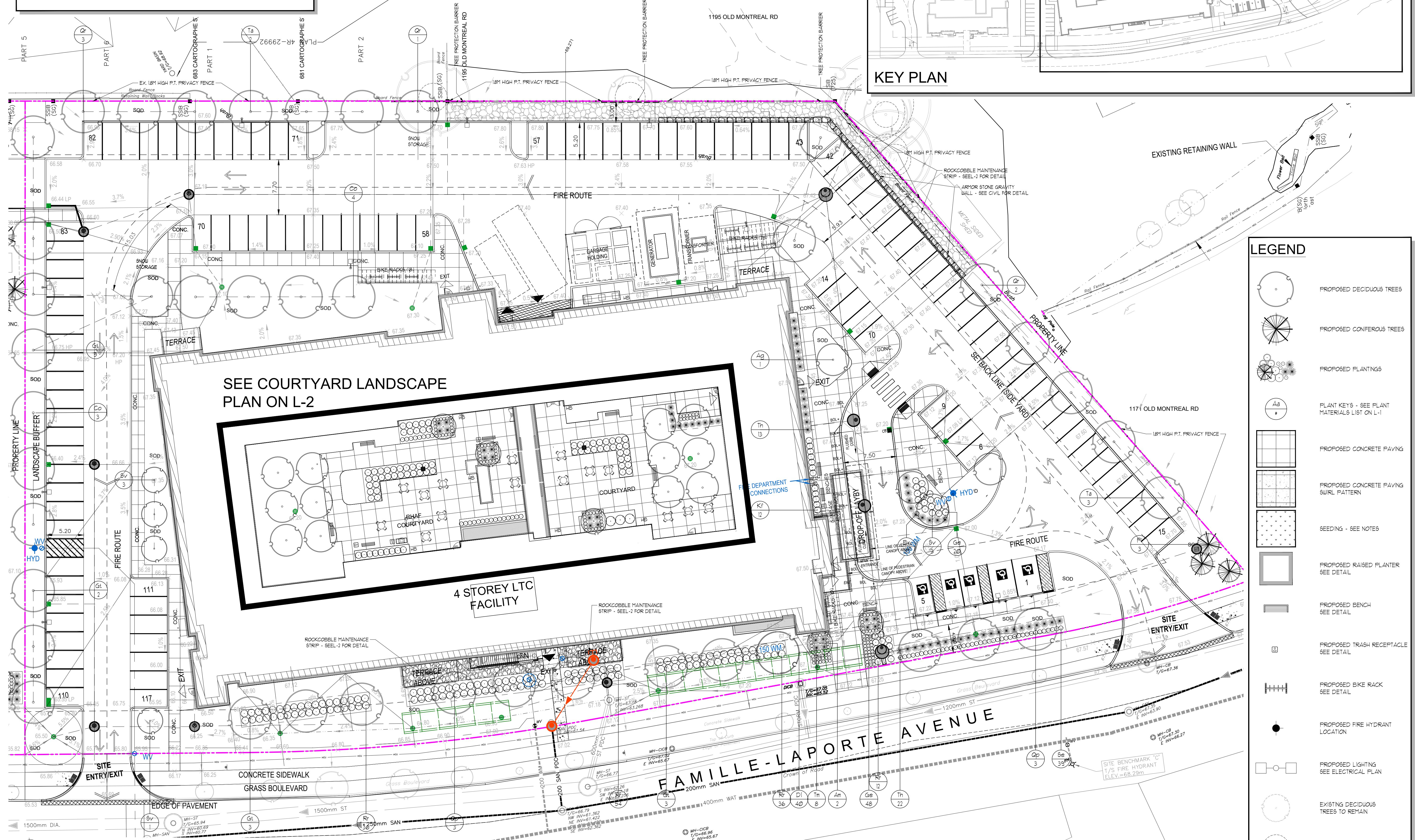
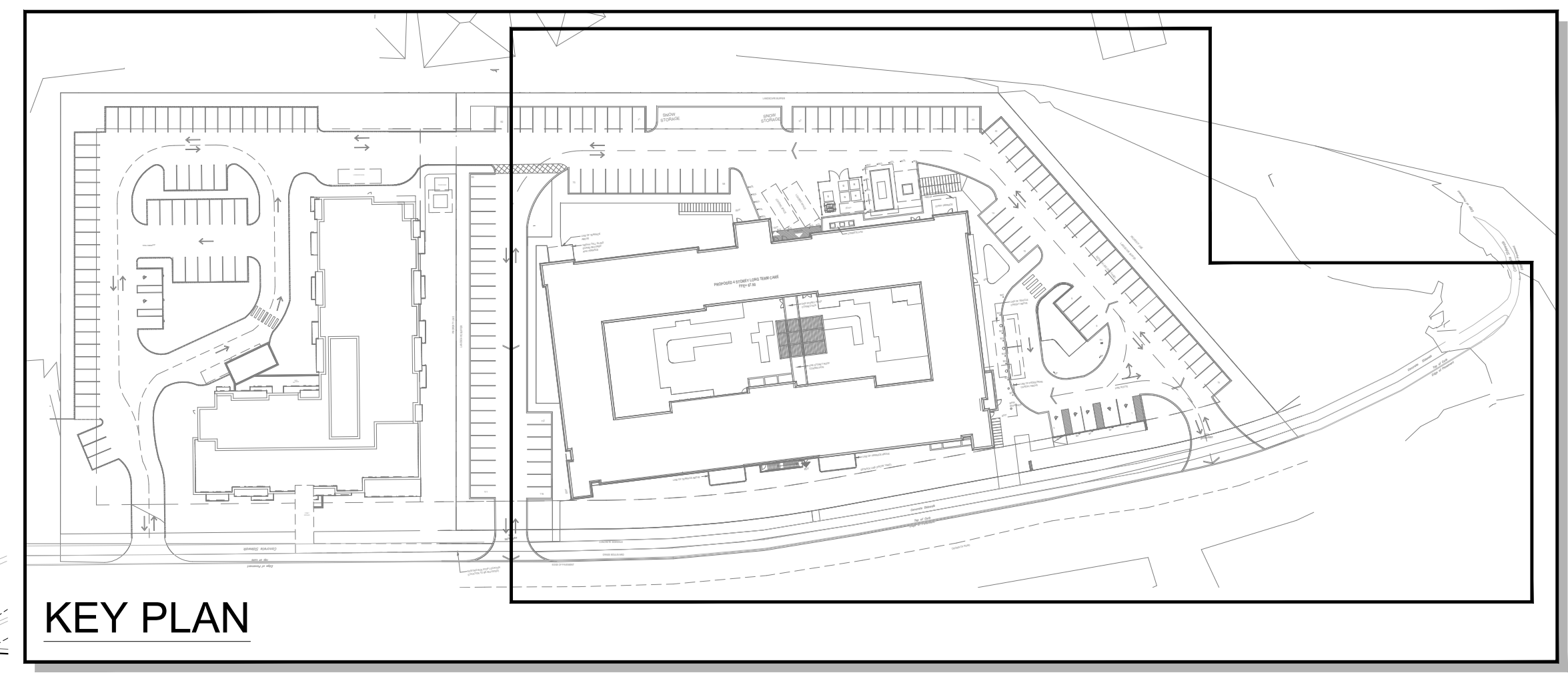


KEY	COMMON NAME	BOTANICAL NAME	QTY	SIZE	COND
Am	AMUR MAPLE	Acer ginnala (multi-stem)	1	40cmcl	UB
MB	MULTI-STEM SERVICEBERRY	Ametanier canadensis multi-stem	2	50cm	POT
B	GREEN GEM BOVWOOD	Buxus x Green Gem	40	3gal	UB
CC	HACKBERRY TREE	Celtis occidentalis	40	60cmcl	UB
D	PARDON ME DAYLILY	Hemerocallis 'Pardon Me'	40	2 1/2 gal	POT
Ge	ROZANNE GERANIUM	Geranium 'Rozanne'	68	2 1/2 gal	POT
Gt	SHADEMASTER LOCUST	Gleditsia triacanthos 'Shademaster'	13	60cmcl	UB
K	KARL FOERSTER REED GRASS	Calamagrostis acutifolia Karl Foerster	12	2 1/2 gal	POT
Q	WHITE SPURGE	Picea glauca	3	50cm	UB
Qc	PIN OAK	Quercus palustris	6	60cmcl	UB
Qd	RED OAK	Quercus rubra	6	60cmcl	UB
R	FLOER CARPET SHRUB ROSE	Rosa 'Flower Carpet'	18	60cm	POT
Sa	AUTUMN JOY SEDUM	Sedum spectabile 'Autumn Joy'	38	2 1/2 gal	POT
Sv	IVORY BILK TREE LILAC	Syringa reticulata	1	2 1/2 gal	POT
Ta	BASSWOOD	Tilia americana	8	60cmcl	UB
Tn	HICKS YEW	Taxus x media 'Hicksii'	35	60cm	POT
Ts	DENSE YEW	Taxus x media 'Densiformis'	8	40cm	POT

G. Wildman

GERALDINE WILDMAN
ACTING MANAGER, DEVELOPMENT REVIEW, EAST
PLANNING, REAL ESTATE & ECONOMIC DEVELOPMENT
DEPARTMENT, CITY OF OTTAWA

APPROVED
 By Geraldine Wildman at 12:08 pm, Jul 21, 2023



LEGEND

- PROPOSED DECIDUOUS TREES
- PROPOSED CONIFEROUS TREES
- PROPOSED PLANTINGS
- PLANT KEYS - SEE PLANT MATERIALS LIST ON L-1
- PROPOSED CONCRETE PAVING
- PROPOSED CONCRETE PAVING SWIRL PATTERN
- SEEDING - SEE NOTES
- PROPOSED RAISED PLANTER SEE DETAIL
- PROPOSED BENCH SEE DETAIL
- PROPOSED TRASH RECEPTACLE SEE DETAIL
- PROPOSED BIKE RACK SEE DETAIL
- PROPOSED FIRE HYDRANT LOCATION
- PROPOSED LIGHTING SEE ELECTRICAL PLAN
- EXISTING DECIDUOUS TREES TO REMAIN
- CRITICAL ROOT ZONE - 10cm RADIUS PER 1cm DBH



ALL DRAWINGS REMAIN THE PROPERTY OF THE LANDSCAPE ARCHITECT AND SHALL NOT BE REPRODUCED OR REUSED WITHOUT THE LANDSCAPE ARCHITECTS WRITTEN PERMISSION.

THIS DRAWING SHALL NOT BE USED FOR CONSTRUCTION OR TENDER PURPOSES UNLESS SIGNED AND DATED BY RONALD H. KOUDYS, O.A.L.A. C.S.L.A. LANDSCAPE ARCHITECT, LONDON, ONTARIO (519) 687-3322.

Ronald H. Koudys, O.A.L.A. C.S.L.A. DATE



#	date	revision	by
12.	MAR 10 2023	RE-ISSUED FOR SITE PLAN CONTROL APPLICATION	MCB
11.	JAN 27 2023	RE-ISSUED FOR SITE PLAN CONTROL APPLICATION & ZONING BY-LAW AMENDMENT	MCB
10.	DEC 16 2022	RE-ISSUED FOR MULTIC WORKING DRAWINGS	MCB
9.	AUG 19 2022	ISSUED FOR SITE PLAN CONTROL APPLICATION	MCB
8.	AUG 19 2022	ISSUED FOR ZONING BY-LAW AMENDMENT	MCB
7.	JUL 29 2022	ISSUED FOR ZONING BY-LAW AMENDMENT	MCB
6.	FEB 24 2022	ISSUED FOR ZONING BY-LAW AMENDMENT	MCB
5.	DEC 02 2021	ISSUED FOR SPA & ZONING BY-LAW AMENDMENT	MCB
4.	NOV 19 2021	ISSUED FOR 100% DD	MCB
3.	NOV 19 2021	ISSUED FOR 25% SPA	MCB
2.	OCT 22 2021	ISSUED FOR 50% DD	MCB
1.	AUG 26 2021	ISSUED FOR 100% SD	MCB

All drawing and specifications are the property of the architect. The contractor shall verify all dimensions and information on site and report any discrepancy to architect before proceeding.

Arch Corp - Orleans

375 Famille-Laporte Avenue (formerly 1161 OLD MONTREAL RD.), ORLEANS ON, K4A 3N6

LANDSCAPE PLAN
2of2

scale: AS NOTED
 drawn by: MCB
 reviewed by: MCB
 job number: 21-164Lq
 plot date: 23-03-10
 drawing number:

L-2

OVERALL LANDSCAPE PLAN 2of2
SCALE = 1:250