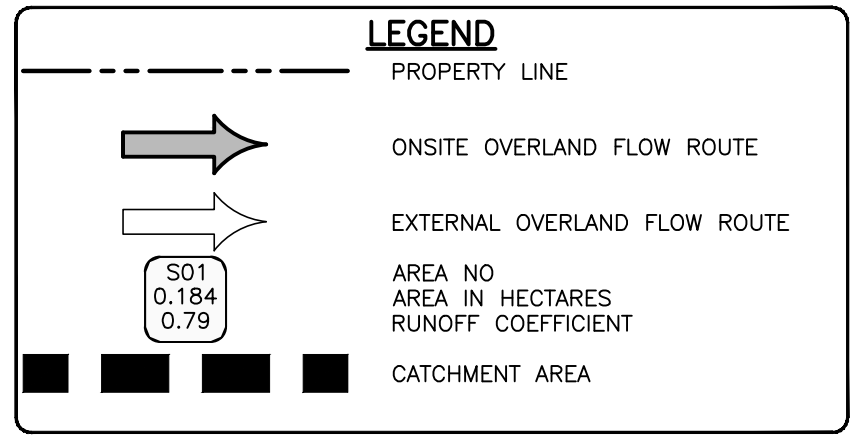
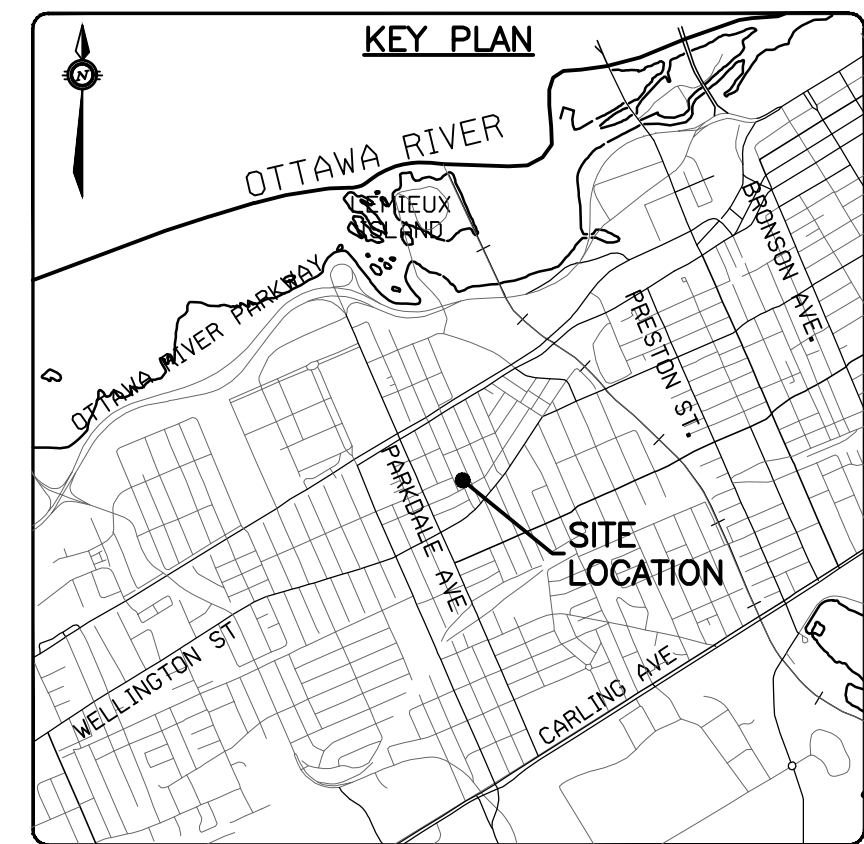
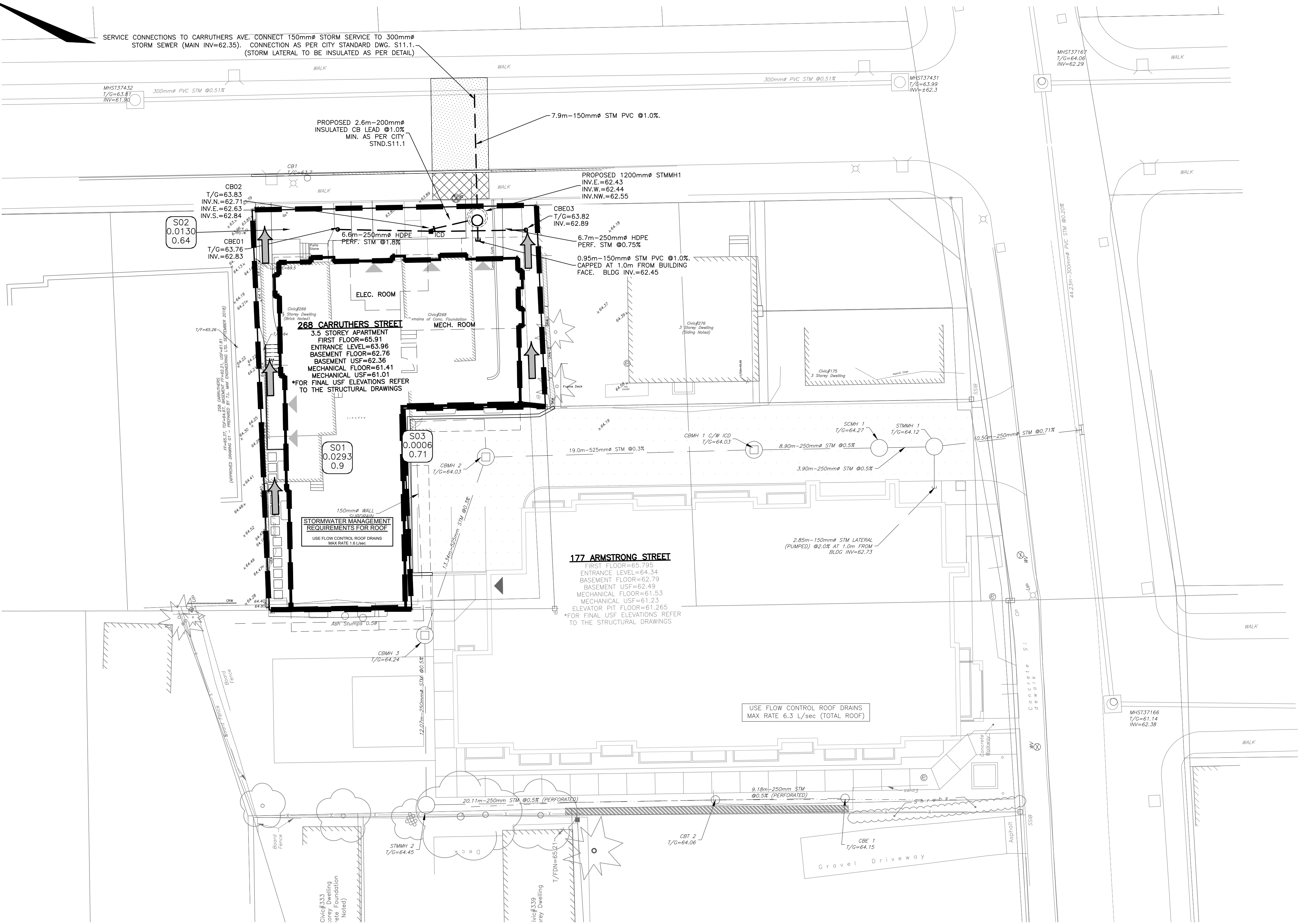


SERVICE CONNECTIONS TO CARRUTHERS AVE. CONNECT 150mm \varnothing STORM SERVICE TO 300mm \varnothing STORM SEWER (MAIN INV.=62.35). CONNECTION AS PER CITY STANDARD DWG. S11.1. (STORM LATERAL TO BE INSULATED AS PER DETAIL)

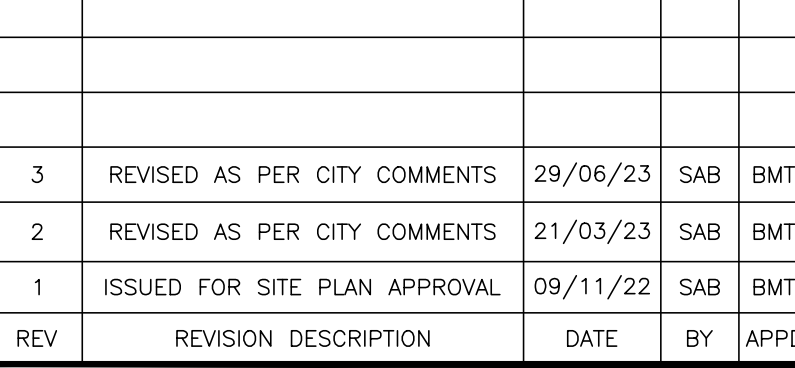


Control Location	Max Flow (L/sec)	Max Head (m)	Type	Model
CB02	2.3	1.08	IPEX TEMPEST	LMF 50

CAUTION
THE POSITION OF ALL POLE LINES, CONDUITS, WATERMANS, SEWERS AND OTHER UNDERGROUND AND OVERGROUND UTILITIES AND STRUCTURES IS NOT NECESSARILY SHOWN ON THE CONTRACT DRAWINGS, AND WHERE SHOWN, THE ACCURACY OF THE POSITION OF SUCH UTILITIES AND STRUCTURES IS NOT GUARANTEED. BEFORE STARTING WORK, DETERMINE THE EXACT LOCATION OF ALL SUCH UTILITIES AND STRUCTURES AND ASSUME ALL LIABILITY FOR DAMAGE TO THEM.

BENCHMARKING NOTES FOR SITE
1. REFER TO LEGAL SURVEY PLAN PREPARED BY FARLEY, SMITH & DENIS SURVEYING INC. DATED APRIL 22, 2022.
2. ELEVATIONS SHOWN ARE GEODETIC AND ARE REFERRED TO GEODETIC DATUM CGVD-1928 11978.
3. ELEVATIONS DERIVED FROM MONUMENT NO. 01919690092 HAVING A PUBLISHED ELEVATION OF 84.092 METRES. LOCATION: ± 340 METRES NORTH OF COLONNADE ROAD, ± 15.3 METRES EAST OF THE EASTERLY FOG LINE ON PRINCE OF WALES DRIVE.
4. IT IS THE RESPONSIBILITY OF THE USER OF THIS INFORMATION TO VERIFY THAT THE BENCHMARK HAS NOT BEEN ALTERED OR DISTURBED AND THAT ITS RELATIVE ELEVATION AND DESCRIPTION AGREES WITH THE INFORMATION SHOWN ON THIS DRAWING.

REV	REVISION DESCRIPTION	DATE	BY	APPD
3	REVISED AS PER CITY COMMENTS	29/06/23	SAB	BMT
2	REVISED AS PER CITY COMMENTS	21/03/23	SAB	BMT
1	ISSUED FOR SITE PLAN APPROVAL	09/11/22	SAB	BMT



DESIGNED BY	REVIEWED BY
SAB	BMT

DEVELOPER
MCCORMICK PARK DEVELOPMENTS
1600 LAPERRIERE AVENUE, SUITE 205
OTTAWA, ON. K1M 2H9
613.421.1515

exp.
exp Services Inc.
1-813-688-1899 | 1-613-225-7330
3025 Colborne Drive, Unit 100
Ottawa, ON K2B 8H6
Canada
www.exp.com
• BUILDINGS • EARTH & ENVIRONMENT • ENERGY •
• INDUSTRIAL • INFRASTRUCTURE • SUSTAINABILITY •

PROJECT
CARRUTHERS AVENUE DEVELOPMENT
266-268 CARRUTHERS
OTTAWA, ONTARIO.

TITLE
STORM DRAINAGE PLAN

PROJECT No.
OTT-22014656-AG

SURVEY
FMW/FSD

DATE
JUNE 2022

DRAWING No.
C400