

REVISIONS	
#	DATE
1	ISSUED FOR SITE PLAN APPROVAL 3-DEC-21
2	REVISED PER COMMENTS 28-OCT-22

- LEGEND:**
- EXISTING
 - PROPOSED
 - CURB
 - STORM SEWER
 - SANITARY SEWER
 - WATERMAIN
 - UTILITY
 - PROPERTY LINE
 - LIGHT STANDARD
 - HYDRANT
 - ELEVATION
 - SEWER OR WM TO BE REMOVED
 - HANDICAPPED PARKING (3.6m X 5.5m TYPICAL)
 - PAINTED PARKING LINE
 - FLOW PATH (FOR T_c)
 - OVERLAND FLOW ROUTE

SURVEY CREDIT:
 TOPOGRAPHIC INFORMATION FROM
 TOPOGRAPHIC PLAN OF SURVEY OF PART OF
 BLOCK 3, RP 4M-300 BY FARLEY, SMITH &
 DENNIS SURVEYING LTD. 2021 DATED APRIL
 26, 2021

BEARING & ELEVATION NOTE
 BEARINGS ARE ASTROMONIC AND ARE
 REFERENCED TO THE SOUTHERLY LIMIT OF
 PART 1 AND PART 2 ON PLAN 4R-24802
 HAVING A BEARING OF N47°47'40"E.

ELEVATIONS ARE GEODETIC AND REFERRED
 TO GEODETIC DATUM CGVD-1928:978 (SEE
 FSD FILE NO. 675-18)

METRIC
 DISTANCES SHOWN ON THIS PLAN ARE IN METRES
 CONTOURS SHOWN HEREON ARE DRAWN AT 0.25
 METRE INTERVALS.

CAUTION NOTE:
 THESE DRAWINGS HAVE BEEN PREPARED
 FOR THE EXPRESSED AND SOLE USE OF
 THE OWNER. CONTRACTORS OR ANY OTHER
 THIRD PARTY ASSUME FULL RESPONSIBILITY
 FOR THE ACCURACY, SUFFICIENCY, AND
 SUITABILITY OF PURPOSE OF ANY AND ALL
 INFORMATION CONTAINED HEREIN.

THIS DRAWING IS NOT TO BE SCALED.
 CONSTRUCTION MUST CONFORM TO ALL
 APPLICABLE CODES AND REQUIREMENTS OF
 AUTHORITIES HAVING JURISDICTION.
 ANY CONTRACTOR WORKING FROM DRAWINGS
 NOT SPECIFICALLY MARKED 'ISSUED FOR
 CONSTRUCTION' MUST ASSUME FULL
 RESPONSIBILITY AND BEAR ALL COSTS FOR
 ANY CORRECTIONS OR DAMAGES RESULTING
 FROM HIS WORK.

Designed By:

Approved:

APPROVED
 By Adam Brown at 6:58 am, Jul 10, 2023

Adam Brown

ADAM BROWN
 MANAGER, DEVELOPMENT REVIEW - RURAL
 PLANNING, REAL ESTATE & ECONOMIC DEVELOPMENT
 DEPARTMENT, CITY OF OTTAWA

EC²E EDILESSE
 CONSULTING
 CIVIL
 ENGINEERS

185 Blake Avenue
 Willowdale, ON, M2M 1B5 416-236-2341
 info@ec2e.ca

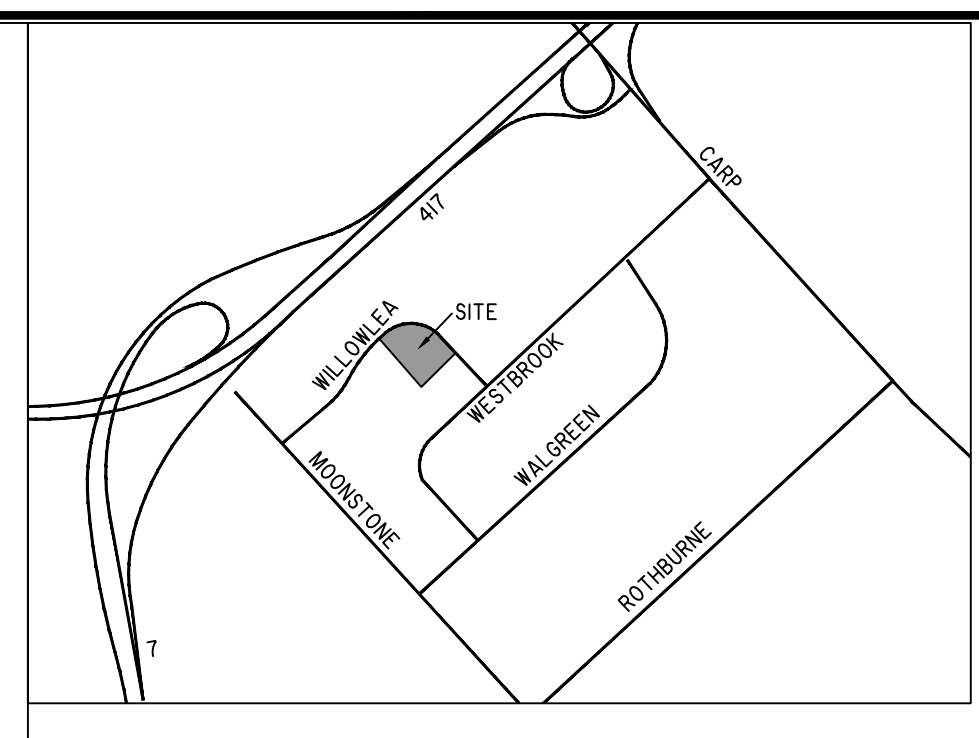
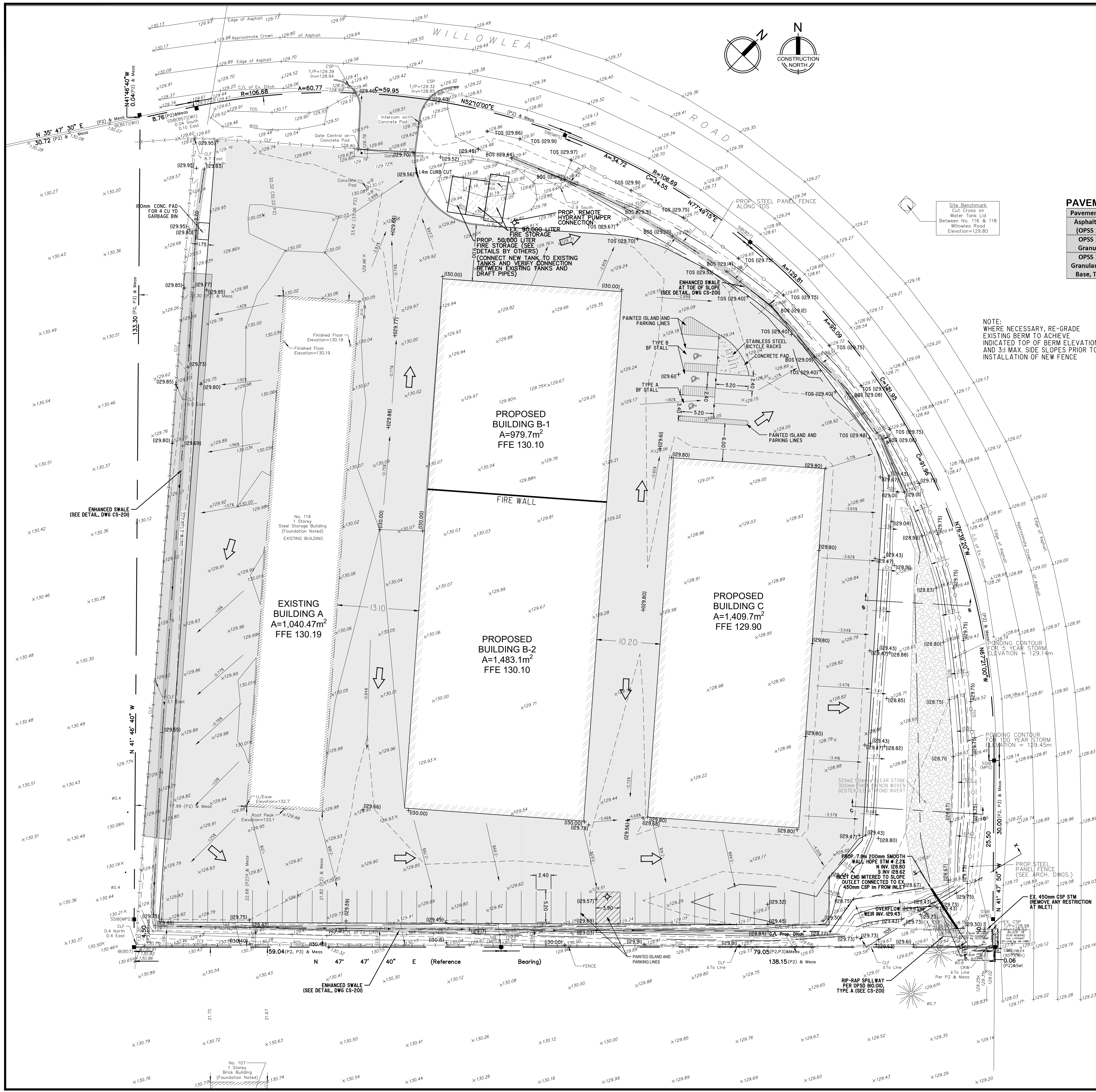
PROJECT

ACCESS PROPERTY DEVELOPMENT
 ACCESS GROUP OF COMPANIES
 109-121 WILLOWLEA RD.
 CARP, ONTARIO

DRAWING
EXISTING GRADING

DATE	IDEC21	PROJECT NO.	2100
DRAWN	M.S.	DRAWING NO.	CS-101
CHECKED	C.C.		
SCALE	1:300		

NOTE:
 THIS DRAWING TO BE READ IN CONJUNCTION WITH
 STANDARD DETAILS AND NOTES ON DRAWING CS-201
 FOR THIS PROJECT



PAVEMENT DESIGN

Pavement Layer	Compaction	Light Duty Paving	Heavy Duty Paving
Asphalt Layer (OPSS 1150)	92-97% MRD	40mm HL3 50mm HL8	40mm HL3 80mm HL8
OPSS 1010 Granular A	100% SPMD	150mm	150mm
OPSS 1010 Granular B Sub-Base, Type II	100% SPMD	300mm	450mm

REVISIONS

#	DATE	DESCRIPTION
1	3-DEC-21	ISSUED FOR SITE PLAN APPROVAL
2	28-OCT-22	REVISED PER COMMENTS

LEGEND:

EXISTING	PROPOSED	DESCRIPTION
---	---	CURB
---	---	STORM SEWER
---	---	SANITARY SEWER
---	---	WATERMAIN
---	---	UTILITY
---	---	PROPERTY LINE
---	---	LIGHT STANDARD
---	---	HYDRANT
---	---	ELEVATION

PAVEMENT DESIGN

Hand or WM to be removed in case of blockage of CB

Handicapped parking (5.6m x 5.5m typical)

Painted parking line

Detector check valve

Meter & backflow prevent.

Overland flow route

Area of potential ponding in case of blockage of CB

SURVEY CREDIT:
TOPOGRAPHIC INFORMATION FROM TOPOGRAPHIC PLAN OF SURVEY OF PART OF BLOCK 3, RP 4M-300 BY FARLEY, SMITH & DENNIS SURVEYING LTD. 2021 DATED APRIL 26, 2021

BEARING & ELEVATION NOTE
BEARINGS ARE ASTRONOMIC AND ARE REFERENCED TO THE SOUTHERLY LIMIT OF PART 1 AND PART 2 ON PLAN 4R-24802 HAVING A BEARING OF N47°47'40"E.

ELEVATIONS ARE GEODETIC AND REFERRED TO GEODETIC DATUM CGVD-1928/978 (SEE FSD FILE NO. 675-18)

METRIC
DISTANCES SHOWN ON THIS PLAN ARE IN METRES. CONTOURS SHOWN HEREON ARE DRAWN AT 0.25 METRE INTERVALS.

CAUTION NOTE:
THESE DRAWINGS HAVE BEEN PREPARED FOR THE EXPRESS AND SOLE USE OF THE OWNER. CONTRACTORS OR ANY OTHER THIRD PARTY ASSUME FULL RESPONSIBILITY FOR THE ACCURACY, SUFFICIENCY, AND SUITABILITY OF PURPOSE OF ANY AND ALL INFORMATION CONTAINED HEREIN.
THIS DRAWING IS NOT TO BE SCALED.
CONSTRUCTION MUST CONFORM TO ALL APPLICABLE CODES AND REQUIREMENTS OF AUTHORITIES HAVING JURISDICTION.
ANY CONTRACTOR WORKING FROM DRAWINGS NOT SPECIFICALLY MARKED 'ISSUED FOR CONSTRUCTION' MUST ASSUME FULL RESPONSIBILITY AND BEAR ALL COSTS FOR ANY CORRECTIONS OR DAMAGES RESULTING FROM HIS WORK.

Designed By:

Approved: _____

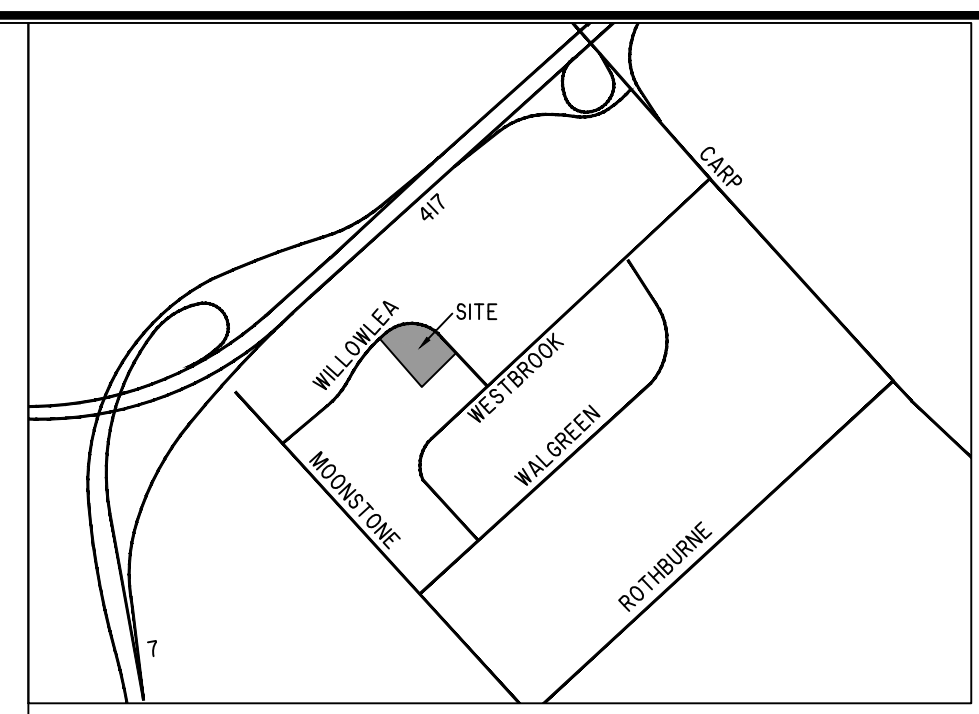
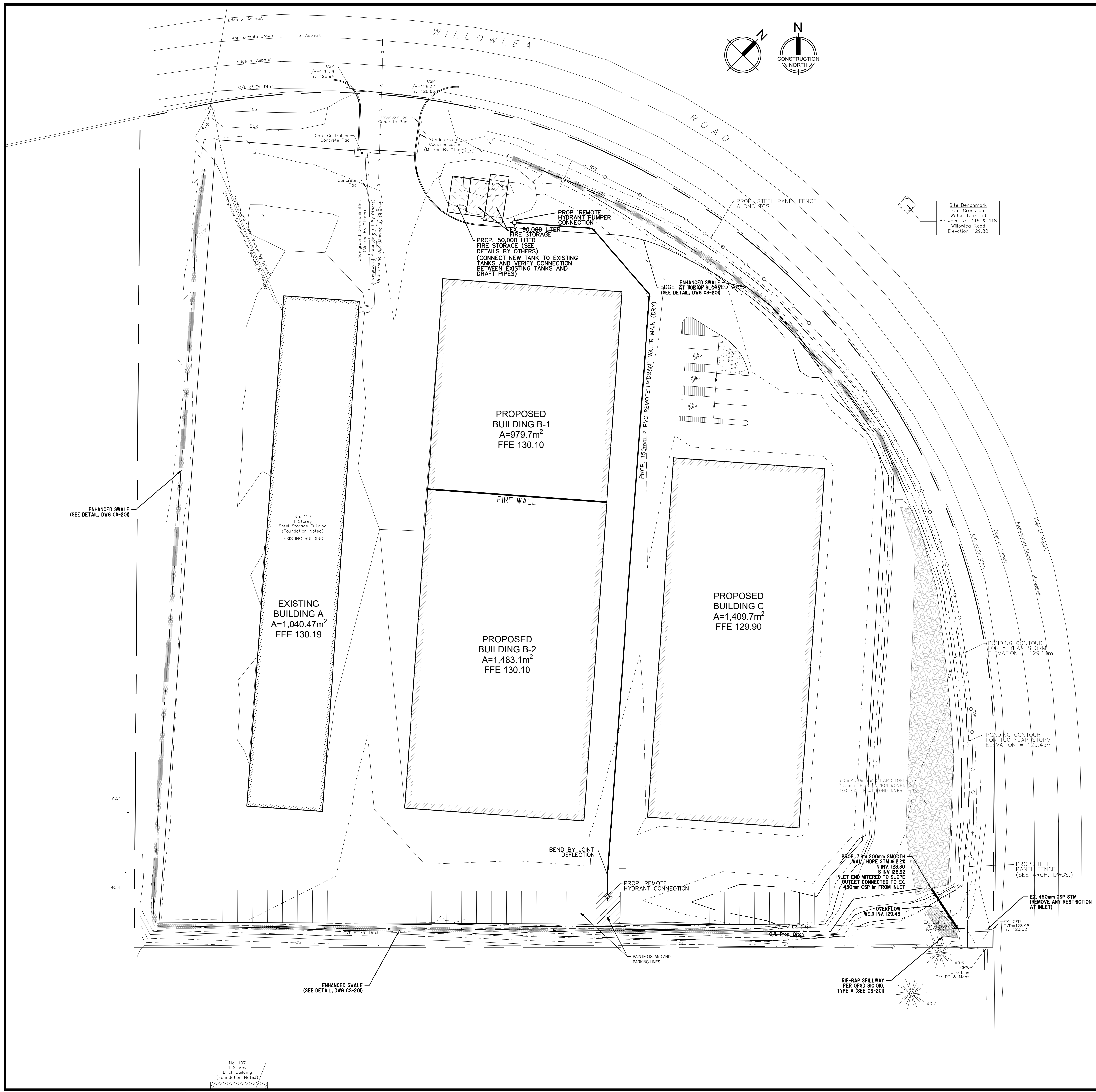
EC²E EDILESSÉ CONSULTING CIVIL ENGINEERS
185 Blake Avenue Willowdale, ON, M2M 1B5 416-236-2341 info@ec2e.co

PROJECT
 ACCESS PROPERTY DEVELOPMENT ACCESS GROUP OF COMPANIES
109-121 WILLOWLEA RD. CARP, ONTARIO

DRAWING
SITE GRADING PLAN

DATE	28OCT22	PROJECT NO.	2100
DRAWN	M.S.	DRAWING NO.	CS-102
CHECKED	C.C.		
SCALE	1:300		

NOTE: THIS DRAWING TO BE READ IN CONJUNCTION WITH STANDARD DETAILS AND NOTES ON DRAWING CS-201 FOR THIS PROJECT



REVISIONS	
#	DATE
1	3-DEC-21
2	28-OCT-22

LEGEND:

EXISTING	PROPOSED	DESCRIPTION
---	---	CURB
---	---	STORM SEWER
---	---	SANITARY SEWER
---	---	WATERMAIN
---	---	UTILITY
---	---	PROPERTY LINE
○	○	LIGHT STANDARD
+	+	HYDRANT
○	○	ELEVATION
---	---	SEWER OR WM TO BE REMOVED IN CASE OF BLOCKAGE OF CB
---	---	HANDICAPPED PARKING (5.6m x 5.5m TYPICAL)
---	---	PAINTED PARKING LINE
○	○	DETECTOR CHECK VALVE
○	○	METER & BACKFLOW PREVENT.
---	---	OVERLAND FLOW ROUTE
---	---	AREA OF POTENTIAL PONDING IN CASE OF BLOCKAGE OF CB

SURVEY CREDIT:
 TOPOGRAPHIC INFORMATION FROM TOPOGRAPHIC PLAN OF SURVEY OF PART OF BLOCK 3, RP 4M-300 BY FARLEY, SMITH & DENNIS SURVEYING LTD. 2021 DATED APRIL 28, 2021

BEARING & ELEVATION NOTE
 BEARINGS ARE ASTRONOMIC AND ARE REFERENCED TO THE SOUTHERLY LIMIT OF PART 1 AND PART 2 ON PLAN 4R-24802 HAVING A BEARING OF N47°47'40"E.

ELEVATIONS ARE GEODETIC AND REFERRED TO GEODETIC DATUM CGVD-1928:1978 (SEE FSD FILE NO. 675-18)

METRIC
 DISTANCES SHOWN ON THIS PLAN ARE IN METRES. CONTOURS SHOWN HEREON ARE DRAWN AT 0.25 METRE INTERVALS.

CAUTION, NOTE:
 THESE DRAWINGS HAVE BEEN PREPARED FOR THE EXPRESSED AND SOLE USE OF THE OWNER. CONTRACTORS OR ANY OTHER THIRD PARTY ASSUME FULL RESPONSIBILITY FOR THE ACCURACY, SUFFICIENCY, AND SUITABILITY OF PURPOSE OF ANY AND ALL INFORMATION CONTAINED HEREIN.
 THIS DRAWING IS NOT TO BE SCALED.
 CONSTRUCTION MUST CONFORM TO ALL APPLICABLE CODES AND REQUIREMENTS OF AUTHORITIES HAVING JURISDICTION.
 ANY CONTRACTOR WORKING FROM DRAWINGS NOT SPECIFICALLY MARKED ISSUED FOR CONSTRUCTION MUST ASSUME FULL RESPONSIBILITY AND BEAR ALL COSTS FOR ANY CORRECTIONS OR DAMAGES RESULTING FROM HIS WORK.

Designed By:

Approved:

EC²E EDILESSA CONSULTING CIVIL ENGINEERS

185 Blake Avenue
 Willowdale, ON, M2M 1B5

416-236-2341
 info@ec2e.ca

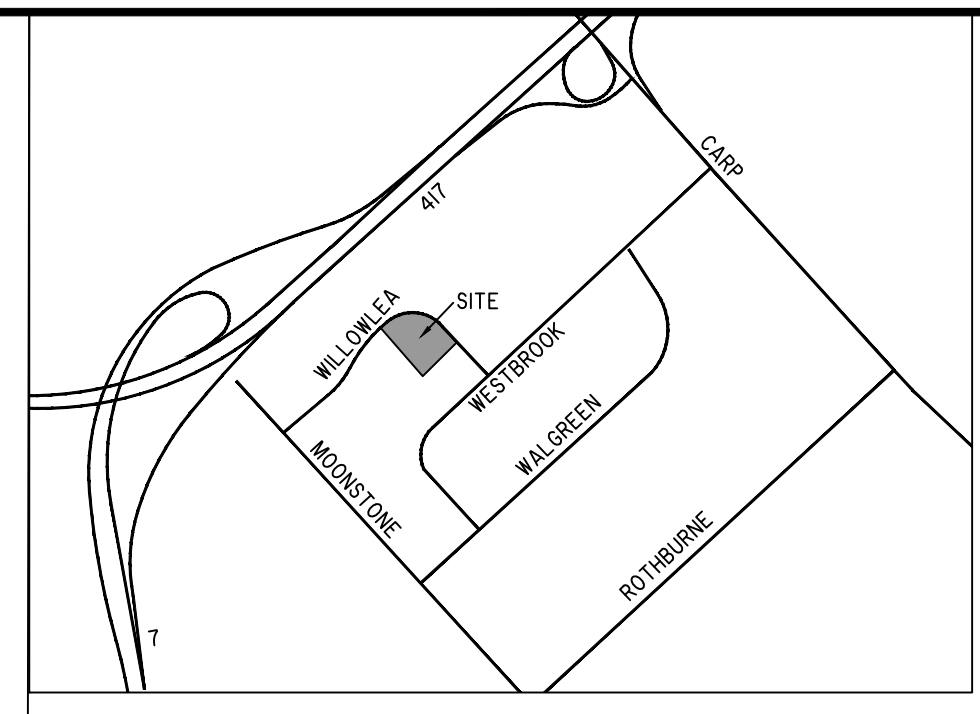
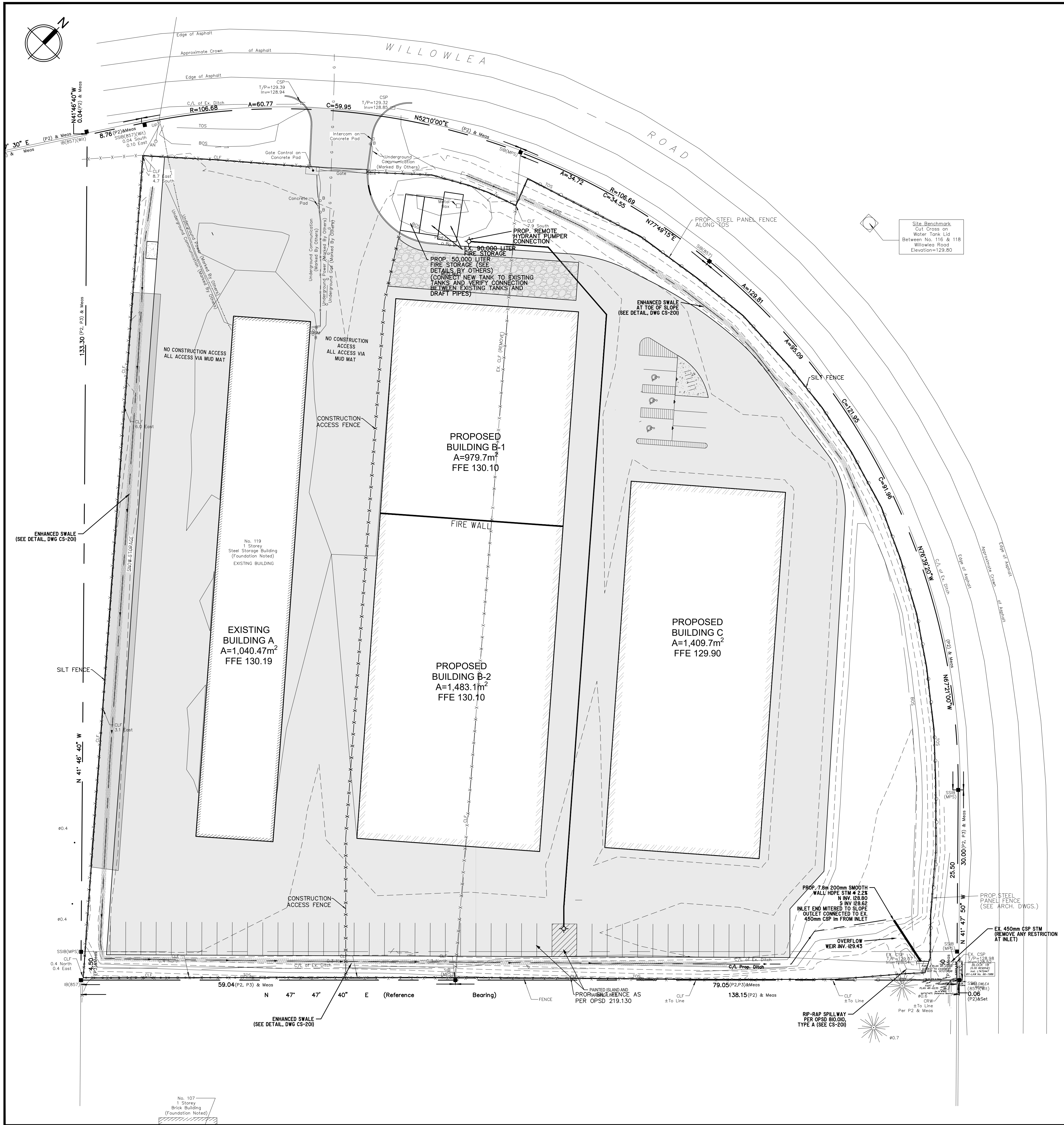
PROJECT

ACCESS PROPERTY DEVELOPMENT
 ACCESS GROUP OF COMPANIES
 109-121 WILLOWLEA RD.
 CARP, ONTARIO

SITING
DRIVE SERVICING PLAN

DATE	1DEC21	PROJECT NO.	2100
DRAWN	M.S.	DRAWING NO.	CS-103
CHECKED	C.C.	SCALE	1:300

NOTE:
 THIS DRAWING TO BE READ IN CONJUNCTION WITH STANDARD DETAILS AND NOTES ON DRAWINGS CS100 AND CS-201 FOR THIS PROJECT

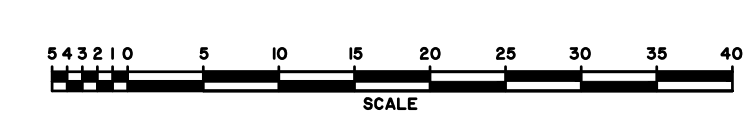


EROSION AND SEDIMENT CONTROL

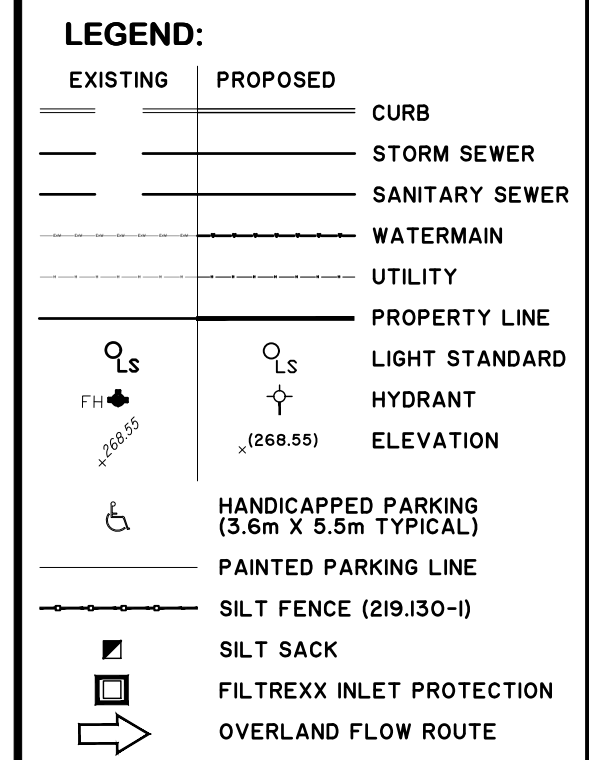
THE EROSION AND SEDIMENT CONTROL STRATEGIES OUTLINED ON THE PLANS ARE NOT STATIC AND MAY NEED TO BE UPGRADED/AMENDED AS SITE CONDITIONS CHANGE TO MINIMIZE SEDIMENT LADEN RUNOFF FROM LEAVING THE WORK AREAS. IF THE PRESCRIBED MEASURES ON THE PLANS ARE NOT EFFECTIVE IN PREVENTING THE RELEASE OF A DELETERIOUS SUBSTANCE, INCLUDING SEDIMENT, THEN ALTERNATIVE MEASURES MUST BE IMPLEMENTED IMMEDIATELY TO MINIMIZE POTENTIAL ECOLOGICAL IMPACTS. ADDITIONAL ESC MEASURES TO BE KEPT ON SITE AND USED AS NECESSARY.

1. SEDIMENT BARRIERS, CHECK DAMS, AND TEMPORARY CONSTRUCTION ACCESS TO BE INSTALLED PRIOR TO THE BEGINNING OF CONSTRUCTION.
2. ALL SEDIMENT CONTROL DEVICES TO BE INSPECTED ON A REGULAR BASIS AND AFTER EVERY RAINFALL AND TO BE MAINTAINED IN PROPER WORKING ORDER UNTIL AREA IS STABILIZED. ANY NECESSARY REPAIRS ARE TO BE DONE IN A TIMELY MANNER TO PREVENT THE MOVEMENT OF SEDIMENT FROM THE SITE AND INTO THE WATERCOURSE.
3. IF NECESSARY, TRUCKS WILL BE WASHED DOWN BEFORE LEAVING THE SITE.
4. THE SITE WILL BE WETTED DOWN AS NECESSARY TO CONTROL DUST.
5. ALL CONSTRUCTION EQUIPMENT MUST BE PARKED ON-SITE.
6. ALL CONSTRUCTION ACTIVITY WILL COMPLY WITH LOCAL NOISE BYLAWS.
7. SEDIMENT CONTROL FENCE TO BE AS PER OPSD 219.130 AS SHOWN HEREON, WITH NON-WOVEN GEOTEXTILE FABRIC (TERRAFIX 270R OR EQUIVALENT). ACCUMULATED SEDIMENT TO BE REMOVED WHEN ACCUMULATIONS REACH A MAXIMUM OF 1/3 OF THE HEIGHT OF THE FENCE.
8. POINT SOURCE DISCHARGES SUCH AS EFFLUENT FROM DEWATERING PUMPS SHALL BE DISCHARGED TO A TERRAFIX ENVIROBAG OR TO A FLAT AREA COVERED WITH NON-WOVEN GEOTEXTILE, STAKED AT THE PERIMETER TO ENSURE STABILITY, WITH A PERIMETER FORMED BY DUAL ROWS OF SILT/SOXX, SPACED 0.6M APART, WITH THE INSIDE SILT/SOXX NOT CLOSER THAN 1.5M FROM THE PUMP DISCHARGE POINT. HIGH FLOW POINT SOURCE DISCHARGES ARE TO BE FILTERED THROUGH A ROCK CHECK DAM (OPSD 219.210 OR 219.211) WITH TWO ROWS OF SILT/SOXX IMMEDIATELY DOWNSTREAM OF THE CHECK DAM.
9. THE EROSION AND SEDIMENT CONTROLS WILL BE INSPECTED WEEKLY, BEFORE AND AFTER RAINFALL EVENTS, AND FOLLOWING SNOWMELT EVENTS TO MONITOR THEIR CONDITION. ALL DAMAGED EROSION AND CONTROL MEASURES SHALL BE REPAIRED AND/OR REPLACED WITHIN 48 HOURS OF THE INSPECTION.
10. ALL CONSTRUCTION VEHICLES TO ENTER AND EXIT SITE FROM DESIGNATED CONSTRUCTION ACCESS. CONTRACTOR TO PROVIDE GRAVEL ENTRANCE WHEREVER EQUIPMENT LEAVES SITE TO PREVENT MUD TRACKING ONTO PAVED SURFACES. GRAVEL BED SHALL BE A MINIMUM OF 15M LONG, 6M WIDE, AND 0.3M DEEP AND SHALL CONSIST OF COARSE (2" CRUSHER RUN LIMESTONE) MATERIAL. GRAVEL ENTRANCE TO BE MAINTAINED IN CLEAN CONDITION.
11. SURPLUS CLEAN FILL MATERIAL TO BE DISPOSED OFF SITE OR AS OTHERWISE INSTRUCTED BY THE PROJECT ENGINEER. ALL TOPSOIL STOCKPILES RETAINED FOR LANDSCAPING AREAS TO BE SURROUNDED WITH SEDIMENT CONTROL FENCING. TOPSOIL PILES AND EXCAVATION MATERIAL SHALL NOT BE LOCATED CLOSER THAN 2.5M FROM ANY PAVED SURFACE, OR ONE WHICH IS TO BE PAVED BEFORE THE PILE IS REMOVED. ALL DISTURBED AREAS AND TOPSOIL PILES TO BE SEEDED IF THEY ARE TO REMAIN DISTURBED OR ON SITE LONGER THAN THIRTY (30) DAYS.
12. AREAS REQUIRING TEMPORARY STABILIZATION TO BE TERRASEEDED PER MANUFACTURER'S SPECIFICATIONS USING A SEED MIX AS NOTED IN THE TABLE ON THIS PAGE AND COMPOSTED ORGANICS MIX SUITABLE FOR SLOPE STABILIZATION, WITH COMPOST ORGANICS APPLIED TO A MINIMUM DEPTH OF 50MM AND SEED AT A RATE OF 25-30KG/HA. STOCKPILES AND TEMPORARY STEEP SLOPES (GREATER THAN 3:1) TO BE SCARIFIED PRIOR TO TERRASEEDING. ALL AREAS TO BE INSPECTED AFTER EVERY RAINFALL AND AREAS DAMAGED BY RUNOFF REPAIRED. AREAS REQUIRING PERMANENT STABILIZATION TO BE SODDED OR OTHERWISE TREATED IN ACCORDANCE WITH THE LANDSCAPE PLANS FOR THE SITE. SOD ON SLOPES TO BE STAKED TO ENSURE STABILITY.
13. ALL CATCHBASINS IN THE VICINITY OF THE PROPOSED WORKS TO BE EQUIPPED WITH SILT/SACKS OR EQUIVALENT AND FULLY SURROUNDED BY A SILT/SOXX (FILTREX OR EQUIVALENT) TO TRAP SEDIMENT. SILT TRAPS ARE TO BE CLEANED REGULARLY AND ARE NOT TO BE REMOVED UNTIL SUCH TIME AS THE CURBS ARE CONSTRUCTED AND THE ADJACENT AREAS ARE PAVED OR GRADED AND SODDED, AS APPLICABLE, AND SOD IS ESTABLISHED.
14. IN THE CASE OF ANY CONFLICT WITH ANOTHER PLAN, THE SEDIMENTATION AND EROSION CONTROL PLAN PREVAILS ONLY IN RESPECT TO CONSTRUCTION MEASURES AND ACTIVITIES SUCH AS THE CONSTRUCTION ACCESS, SILT FENCE, SECURITY FENCING, SEDIMENT CONTROL, AND MUD MATS.
15. STREET SWEEPING, CATCH BASIN CLEANING AND DUST CONTROL ARE THE RESPONSIBILITY OF THE CONTRACTOR AND MUST BE KEPT UNDER CONTROL ON ALL ROADWAYS TO THE SATISFACTION OF THE PROPERTY MANAGER, CITY AND/OR CONSERVATION AUTHORITY.
16. ANY FAILURE TO COMPLY WITH EROSION AND SEDIMENT CONTROL MEASURES STIPULATED ABOVE, INCLUDING BUT NOT LIMITED TO KEEPING THE ROADWAYS SURROUNDING THE SITE CLEAR, SHALL BE RECTIFIED BY THE MUNICIPALITY AND/OR THE OWNER AT THE CONTRACTOR'S EXPENSE.

NOTE: THIS DRAWING TO BE READ IN CONJUNCTION WITH STANDARD DETAILS AND NOTES ON DRAWINGS CS-100 AND CS-201 FOR THIS PROJECT



REVISIONS	
#	DATE
1	ISSUED FOR SITE PLAN APPROVAL
2	REVISED PER COMMENTS



SURVEY CREDIT:
 TOPOGRAPHIC INFORMATION FROM TOPOGRAPHIC PLAN OF SURVEY OF PART OF BLOCK 1, RP 44-300 BY FARLEY, SMITH & DENNIS SURVEYING LTD. 2021 DATED APRIL 26, 2021

BEARING & ELEVATION NOTE
 BEARINGS ARE ASTROMONIC AND ARE REFERENCED TO THE SOUTHERLY LIMIT OF PART 1 AND PART 2 ON PLAN 4R-24-902 HAVING A BEARING OF N47°47'40"E. ELEVATIONS ARE GEODETIC AND REFERRED TO GEODETIC DATUM CGVD-1928/978 (SEE FSD FILE NO. 675-18)

METRIC
 DISTANCES SHOWN ON THIS PLAN ARE IN METRES. CONTOURS SHOWN HEREON ARE DRAWN AT 0.25 METRE INTERVALS.

CAUTION, NOTE:
 THESE DRAWINGS HAVE BEEN PREPARED FOR THE EXPRESSED AND SOLE USE OF THE OWNER, CONTRACTORS OR ANY OTHER THIRD PARTY ASSUME FULL RESPONSIBILITY FOR THE ACCURACY, SUFFICIENCY, AND SUITABILITY OF PURPOSE OF ANY AND ALL INFORMATION CONTAINED HEREIN.

THIS DRAWING IS NOT TO BE SCALED.
 CONSTRUCTION MUST CONFORM TO ALL APPLICABLE CODES AND REQUIREMENTS OF AUTHORITIES HAVING JURISDICTION.
 ANY CONTRACTOR WORKING FROM DRAWINGS NOT SPECIFICALLY MARKED ISSUED FOR CONSTRUCTION MUST ASSUME FULL RESPONSIBILITY AND BEAR ALL COSTS FOR ANY CORRECTIONS OR DAMAGES RESULTING FROM HIS WORK.

Designed By:

Approved:

EC²E EDILESSÉ CONSULTING CIVIL ENGINEERS
 185 Blake Avenue Willowdale, ON, M2M 1B5 416-236-2341 info@ec2e.co

PROJECT
 ACCESS PROPERTY DEVELOPMENT ACCESS GROUP OF COMPANIES
 109-121 WILLOWLEA RD. CARP, ONTARIO

DRAWING
SILTATION & EROSION CONTROL PLAN

DATE	1 DEC 21	PROJECT NO.	2100
DRAWN	M.S.	DRAWING NO.	
CHECKED	C.C.		
SCALE	1:300		

CS-104

NOTES:

SITE PLAN:

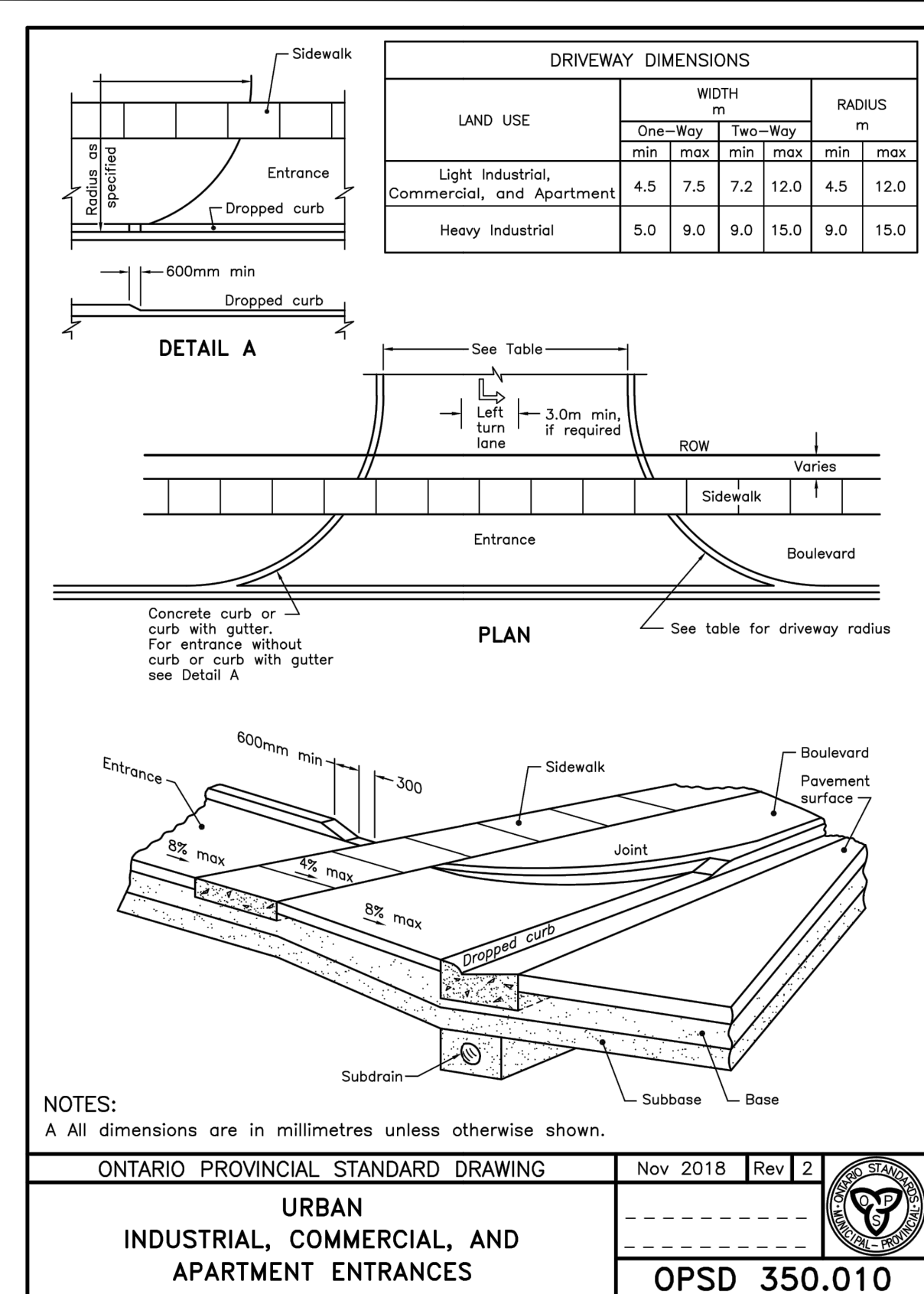
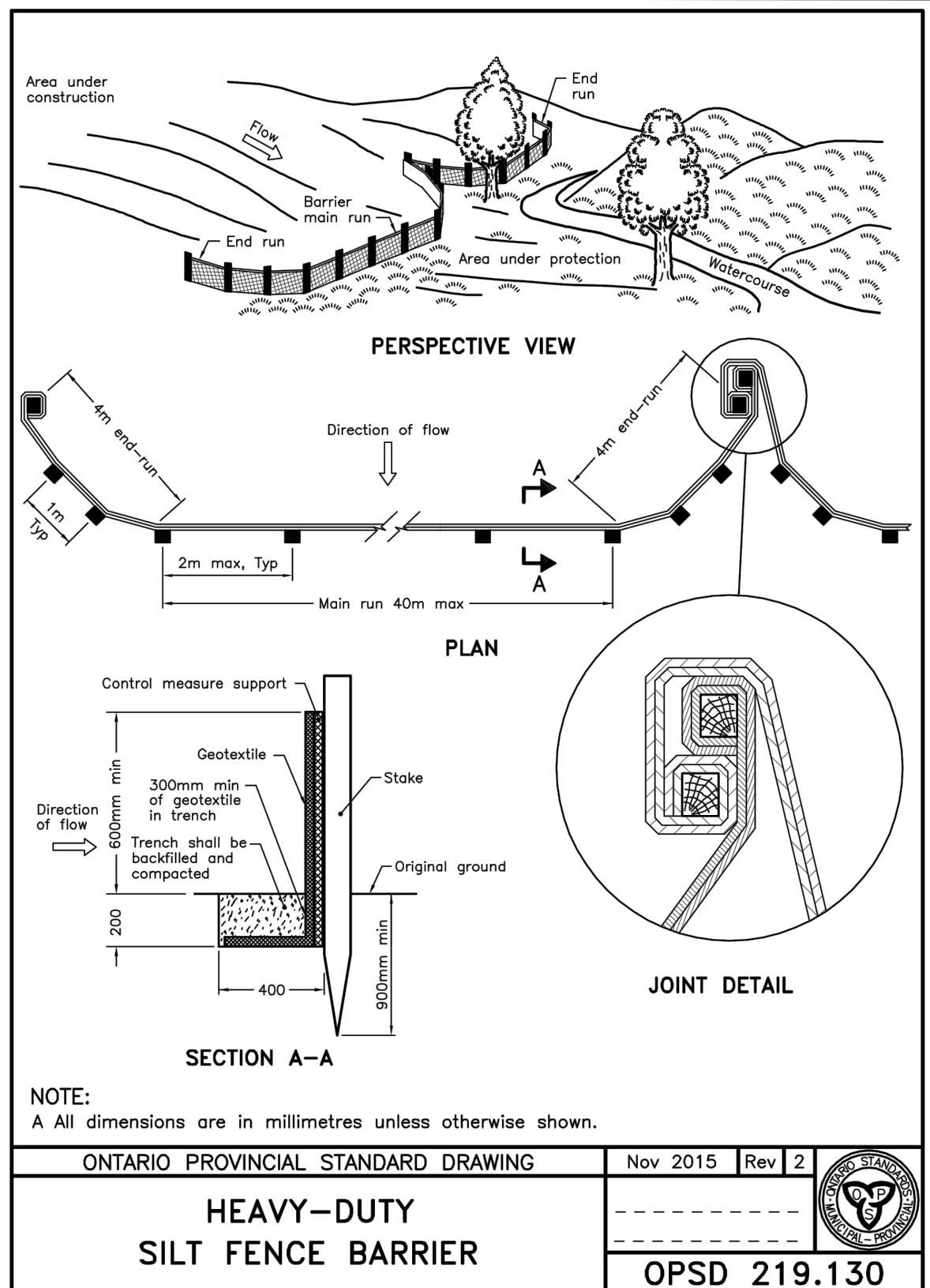
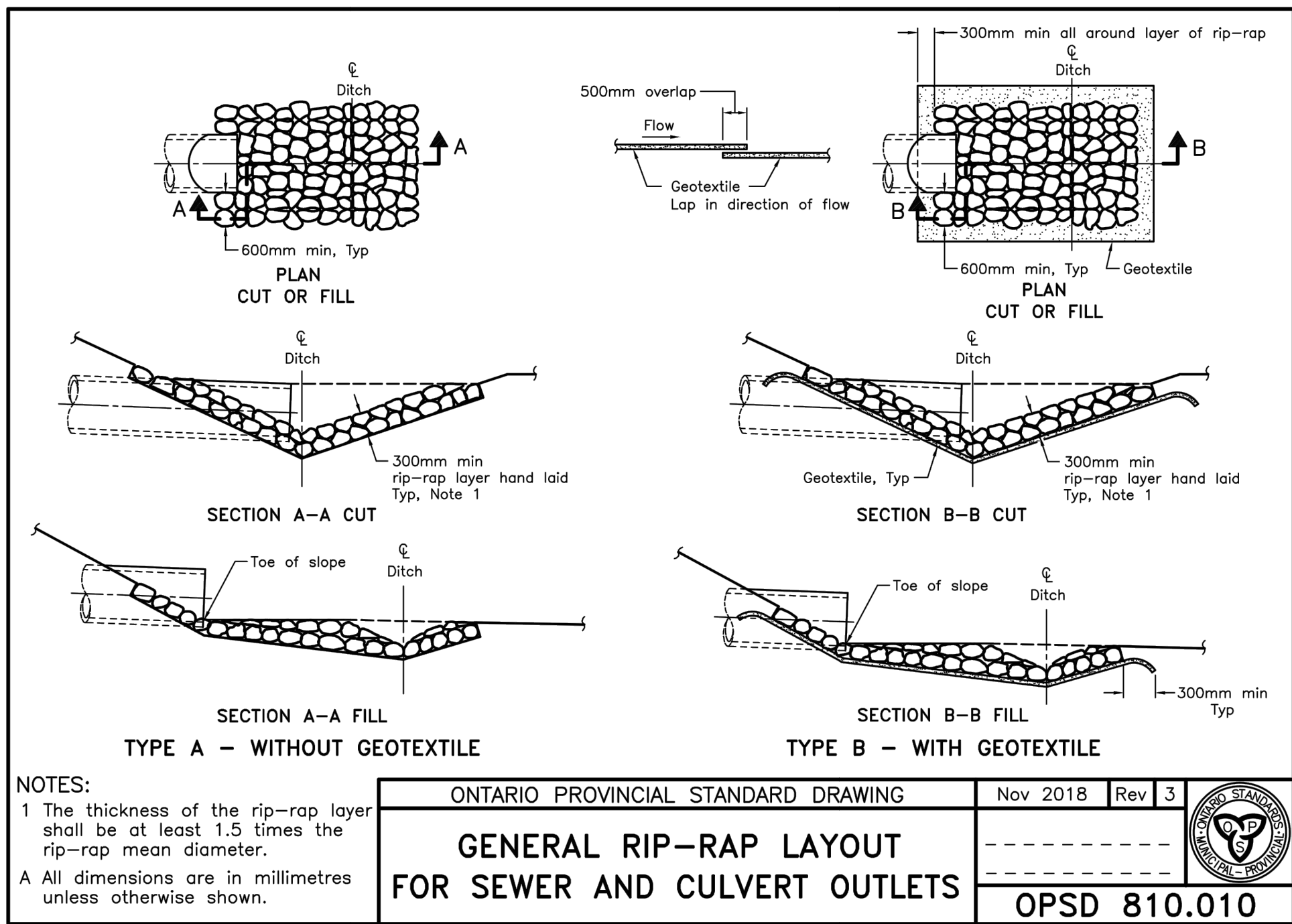
- THE GENERAL CONTRACTOR SHALL CHECK AND VERIFY ALL DIMENSIONS AND REPORT ALL ERRORS AND OMISSIONS IMMEDIATELY TO THE ENGINEER.
- INFORMATION SHOWN HEREON REGARDING THE SIZE AND LOCATION OF EXISTING SERVICES AND/OR UTILITIES IS FURNISHED AS THE BEST AVAILABLE INFORMATION AND SHALL BE INTERPRETED AS THE CONTRACTOR SEES FIT WITH THE UNDERSTANDING THAT THE OWNER AND EDLISSE CONSULTING CIVIL ENGINEERS LTD. OR ITS AGENTS DISCLAIM ALL RESPONSIBILITY FOR ITS SUFFICIENCY AND/OR ACCURACY. THE CONTRACTOR SHALL BE RESPONSIBLE FOR OBTAINING AT ITS OWN EXPENSE, LOCATES OF ALL UTILITIES.
- AT ALL ENTRANCES TO THE SITE THE MUNICIPAL CURB AND SIDEWALK WILL BE CONTINUOUS THROUGHOUT THE DRIVEWAY. THE DRIVEWAY GRADE WILL BE COMPATIBLE WITH THE EXISTING SIDEWALK AND CURB DEPRESSION WILL BE PROVIDED FOR EACH ENTRANCE, AS PER MUNICIPAL STANDARDS.
- TOPSOIL TO BE STRIPPED. CLEAN FILL TO BE PLACED AND COMPACTED TO 95% STD. PROCTOR DENSITY. GRANULAR MATERIAL TO BE COMPACTED TO 100% STD. PROCTOR DENSITY.
- ALL GRADES TO BE WITHIN 1:4 MAX. SLOPE AT PROPERTY LINE AND WITHIN THE SITE.
- ALL UNDERGROUND SERVICE MATERIALS AND INSTALLATIONS TO BE IN ACCORDANCE WITH THE LATEST O.B.C., MUNICIPAL AND OTHER REGULATORY STANDARDS AND CODES.
- ALL SURFACE DRAINAGE SHALL BE SELF CONTAINED, COLLECTED AND DISCHARGED AT A LOCATION TO BE APPROVED PRIOR TO THE ISSUANCE OF A BUILDING PERMIT.
- CONTINUOUS CONCRETE CURB TO BE PROVIDED BETWEEN LANDSCAPED AREAS AND ASPHALT PAVING EXCEPT AS NOTED.
- ALL DISTURBED AREAS TO BE RESTORED TO THE SATISFACTION OF THE CITY OF OTTAWA, INCLUDING EXISTING CONCRETE CURB, TOPSOIL AND SODDED BOULEVARDS.

FIRE DEPARTMENT:

- FIRE ROUTE WILL BE DESIGNATED AS PER LOCAL BY LAW, AS AMENDED, PRIOR TO OCCUPANCY OF THE BUILDINGS.
- ACCESS ROUTES TO BE DESIGNED TO SUPPORT A LOAD OF NOT LESS THAN 11.363 KG PER AXLE AND HAVE A CHANGE IN GRADIENT OF NOT MORE THAN 1 IN 12.5 OVER A MINIMUM DISTANCE OF 15.0 M.
- ALL 12.0 M TURNING RADI HAVE MIN. CLEARANCE OF 3.0 M BETWEEN THE CENTRE AND ANY CURB OR PART OF BUILDING.

STORM SEWERS:

- ALL CONCRETE SEWER PIPES SHALL HAVE RUBBER GASKET JOINTS.
- THE PIPE SUBGRADE MATERIAL IS ANTICIPATED TO BE CLAY. PER GEOTECHNICAL INVESTIGATION, PIPE BEDDING TO BE 300 MM THICK OPSS 1010 GRANULAR 'B' TYPE II SUB-BEDDING MATERIAL, OVERLAIN BY 150 MM THICK OPSS 1010 GRANULAR 'A' BEDDING MATERIAL, COMPACTED TO AT LEAST 98 PERCENT SPMD.
- TRENCH BASE STABILIZATION TECHNIQUES, INCLUDING REMOVAL OF LOOSE/SOFT MATERIAL, PLACEMENT OF CRUSHED STONE SUB-BEDDING (GRANULAR B TYPE II), COMPLETELY WRAPPED IN A NON-WOVEN GEOTEXTILE, MAY BE USED IF TRENCH BASE DISTURBANCE BECOMES A PROBLEM IN WET OR SOFT AREAS.
- IF THE BACKFILL FOR THE SERVICE TRENCHES WILL CONSIST OF GRANULAR FILL, CLAY SEALS SHOULD BE INSTALLED IN THE SERVICE TRENCHES AT SELECT INTERVALS AS PER CITY OF OTTAWA DRAWING NO. S8. THE SEALS SHOULD BE 1 M WIDE, EXTEND OVER THE ENTIRE TRENCH WIDTH AND FROM THE BOTTOM OF THE TRENCH TO THE UNDERSIDE OF THE PAVEMENT STRUCTURE. CLAY TO BE COMPACTED TO 95 PERCENT SPMD.
- UNDERGROUND SERVICES SHOULD BE INSTALLED IN SHORT OPEN TRENCH SECTIONS THAT ARE EXCAVATED AND BACKFILLED THE SAME DAY. ALL SEWERS SHALL BE CONSTRUCTED WITH BEDDING IN ACCORDANCE WITH CITY STD. 751, CL. 'B', UNLESS OTHERWISE NOTED.
- ALL WORKS SHALL BE CONSTRUCTED IN ACCORDANCE WITH CURRENT CITY OF OTTAWA STANDARDS AND SPECS.
- SINGLE CATCHBASIN LEADS TO BE 200 MM UNLESS OTHERWISE NOTED. DOUBLE CATCHBASIN LEADS TO BE 250 MM UNLESS OTHERWISE NOTED. ALL CATCHBASIN LEADS TO BE C-14 ES MINIMUM.
- ALL BACKFILL FOR SEWERS, WATERMANS AND UTILITIES ON THE ROAD ALLOWANCE MUST BE MECHANICALLY COMPACTED TO 95% STANDARD PROCTOR DENSITY.



REVISIONS

#	REVISION	DATE
1	ISSUED FOR SITE PLAN APPROVAL	3-DEC-21
2	REVISED FOR COMMENTS	28-OCT-22

LEGEND:

EXISTING	PROPOSED	DESCRIPTION
---	---	CURB
---	---	STORM SEWER
---	---	SANITARY SEWER
---	---	WATERMAIN
---	---	UTILITY
---	---	PROPERTY LINE
---	---	LIGHT STANDARD
---	---	HYDRANT
---	---	ELEVATION
---	---	HANDICAPPED PARKING (3.6m x 5.5m TYPICAL)
---	---	SILT FENCE (219.130-1)
---	---	SILT SACK
---	---	FILTREX INLET PROTECTION
---	---	OVERLAND FLOW ROUTE
---	---	AREA OF POTENTIAL PONDING IN CASE OF BLOCKAGE OF CB

SURVEY CREDIT:
 TOPOGRAPHIC INFORMATION FROM TOPOGRAPHIC PLAN OF SURVEY OF PART OF BLOCK 3, RP 4M-300 BY FARLEY, SMITH & DENNIS SURVEYING LTD. 2021 DATED APRIL 26, 2021

BEARING & ELEVATION NOTE
 BEARINGS ARE ASTROMIC AND ARE REFERENCED TO THE SOUTHERLY LIMIT OF PART I AND PART 2 ON PLAN 4R-24802 HAVING A BEARING OF N47°47'40"E.

ELEVATIONS ARE GEODETIC AND REFERRED TO GEODETIC DATUM CGVD-1928:1978 (SEE FSD FILE NO. 675-18)

METRIC
 DISTANCES SHOWN ON THIS PLAN ARE IN METRES. CONTOURS SHOWN HEREON ARE DRAWN AT 0.25 METRE INTERVALS.

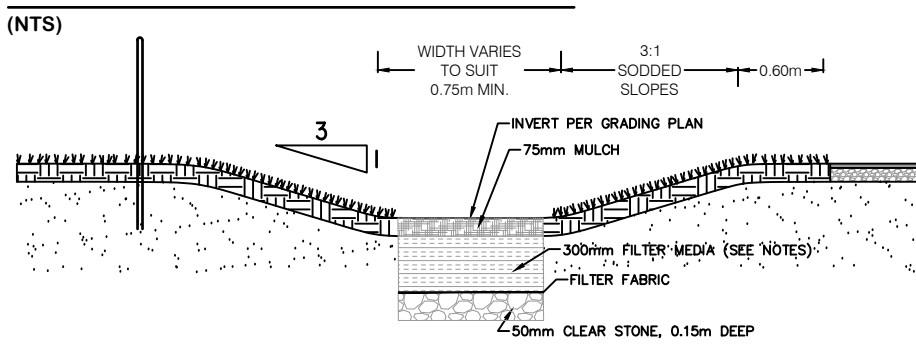
CAUTION, NOTE:
 THESE DRAWINGS HAVE BEEN PREPARED FOR THE EXPRESSED AND SOLE USE OF THE OWNER. CONTRACTORS OR ANY OTHER THIRD PARTY ASSUME FULL RESPONSIBILITY FOR THE ACCURACY, SUFFICIENCY, AND SUITABILITY OF PURPOSE OF ANY AND ALL INFORMATION CONTAINED HEREIN.

THIS DRAWING IS NOT TO BE SCALED.

CONSTRUCTION MUST CONFORM TO ALL APPLICABLE CODES AND REQUIREMENTS OF AUTHORITIES HAVING JURISDICTION.

ANY CONTRACTOR WORKING FROM DRAWINGS NOT SPECIFICALLY MARKED 'ISSUED FOR CONSTRUCTION' MUST ASSUME FULL RESPONSIBILITY AND BEAR ALL COSTS FOR ANY CORRECTIONS OR DAMAGES RESULTING FROM HIS WORK.

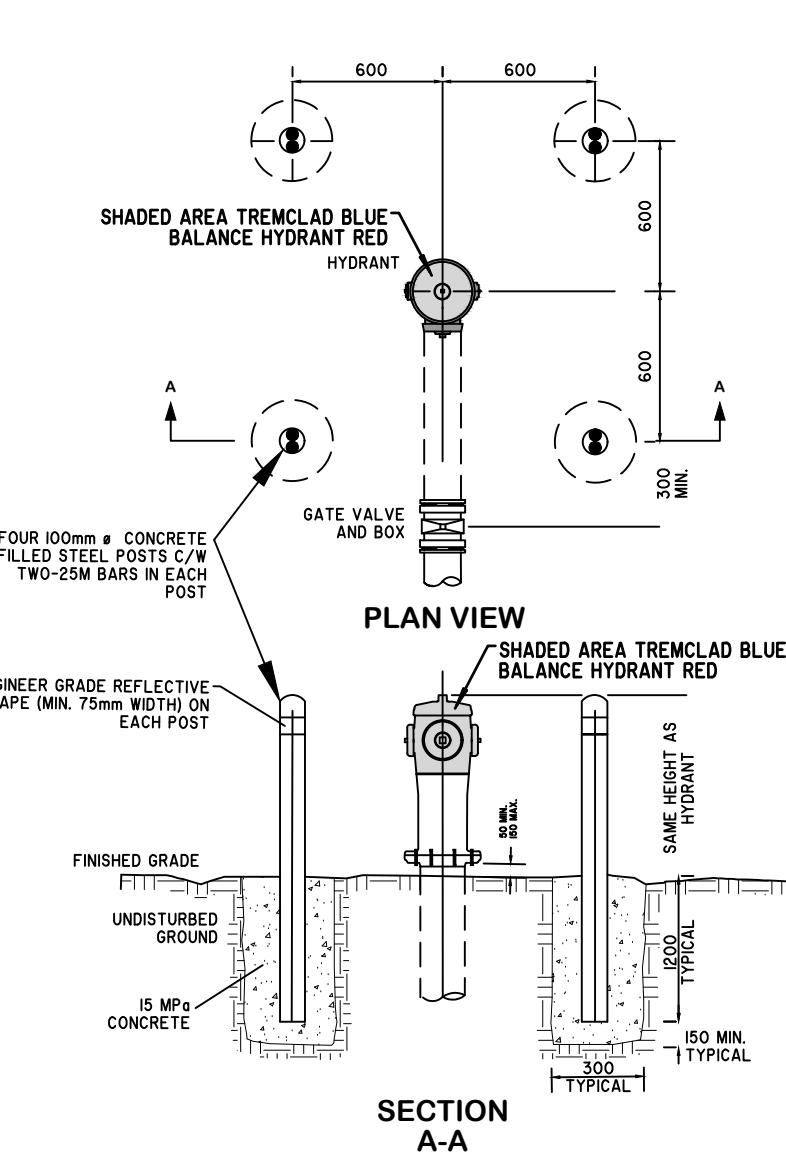
SWALE AT PROPERTY LINE



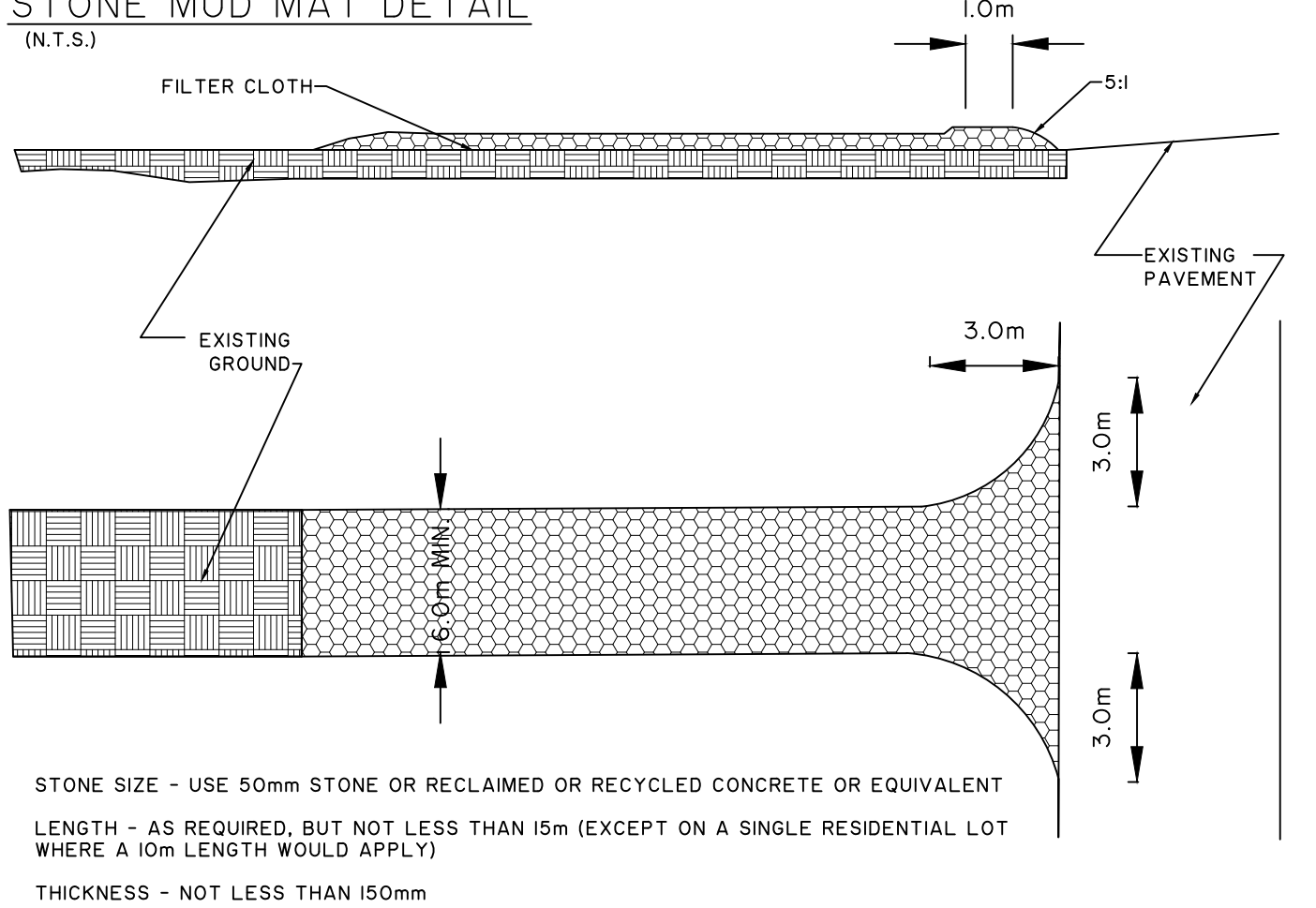
SOILS ALONG THE LOCATION OF THE SWALE INCLUDING SIDE SLOPES SHOULD BE TILLED TO A DEPTH OF 300 MM AND AMENDED WITH COMPOST TO ACHIEVE AN ORGANIC CONTENT OF 8 TO 10% BY WEIGHT OR 30 TO 40% BY VOLUME.

Material	Specification	Quantity
Filter Media	Filter Media Soil Mixture to contain: <ul style="list-style-type: none"> 85 to 88% sand 8 to 12% soil fines 3 to 5% organic matter (leaf compost) Other Criteria: <ul style="list-style-type: none"> Phosphorus soil test index (P-Index) value between 10 to 30 ppm Cationic exchange capacity (CEC) greater than 10 meq/100 g Free of stones, stumps, roots and other large debris pH between 5.5 to 7.5 Infiltration rate greater than 25 mm/hr 	Depth as noted.
Mulch Layer	Shredded hardwood bark mulch	A 75 mm layer on the surface of the filter bed
Geotextile	Material specifications should conform to Ontario Provincial Standard Specification (OPSS) 1860 for Class II geotextile fabrics. Should be woven monofilament or non-woven needle punched fabrics. Woven silt film and non-woven heat bonded fabrics should not be used.	Strip over the perforated pipe underdrain between the filter media bed and gravel storage layer (stone reservoir)
Gravel	Washed 50 mm diameter clear stone.	

HYDRANT BOLLARD SPACING



STONE MUD MAT DETAIL



STONE SIZE - USE 50mm STONE OR RECLAIMED OR RECYCLED CONCRETE OR EQUIVALENT LENGTH - AS REQUIRED, BUT NOT LESS THAN 15m (EXCEPT ON A SINGLE RESIDENTIAL LOT WHERE A 10m LENGTH WOULD APPLY)

THICKNESS - NOT LESS THAN 150mm

WIDTH - 6m MINIMUM, BUT NOT LESS THAN THE WIDTH AT POINTS WHERE INGRESS OR EGRESS OCCURS.

FILTER CLOTH - WILL BE PLACED OVER THE ENTIRE AREA PRIOR TO PLACING STONE. FILTER CLOTH WILL NOT BE REQUIRED ON RESIDENTIAL LOTS.

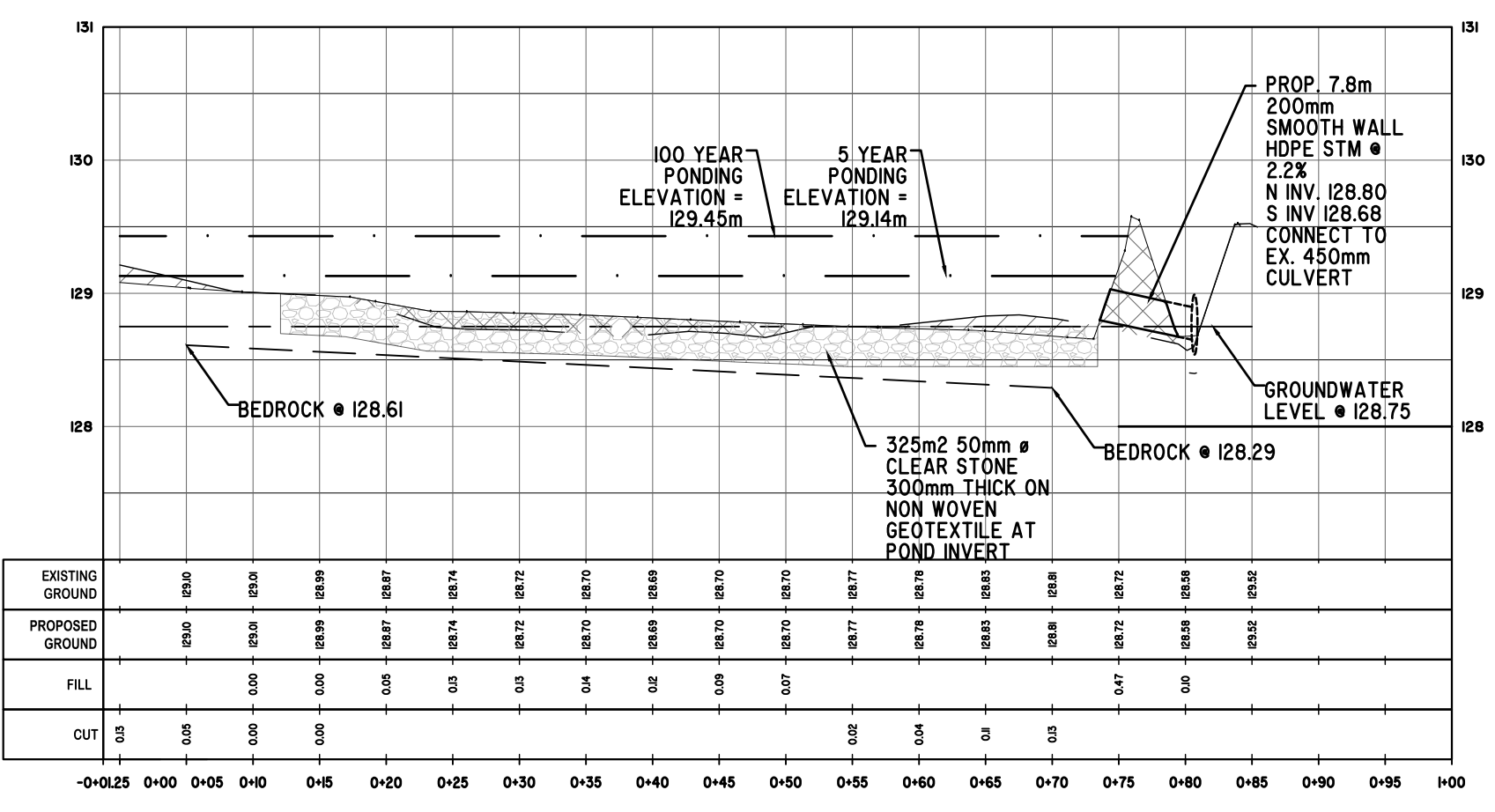
SURFACE WATER - ALL SURFACE WATER FLOWING OR DIRECTED TOWARD CONSTRUCTION ENTRANCES SHALL BE PIPED ACROSS THE ENTRANCE. IF PIPING IS IMPRACTICAL, A MOUNTABLE BERM WITH 5:1 SLOPES WILL BE PERMITTED.

MAINTENANCE - THE ENTRANCE SHALL BE MAINTAINED IN A CONDITION WHICH WILL PREVENT TRACKING OR FLOWING OF SEDIMENT ONTO PUBLIC RIGHT-OF-WAY. THIS MAY REQUIRE PERIODIC TOP DRESSING WITH ADDITIONAL STONE AS CONDITIONS DEMAND AND REPAIR AND/OR CLEANOUT OF ANY MEASURES USED TO TRAP SEDIMENT. ALL SEDIMENT SPILLED, DROPPED, WASHED, OR TRACKED ONTO PUBLIC RIGHT-OF-WAY MUST BE REMOVED IMMEDIATELY.

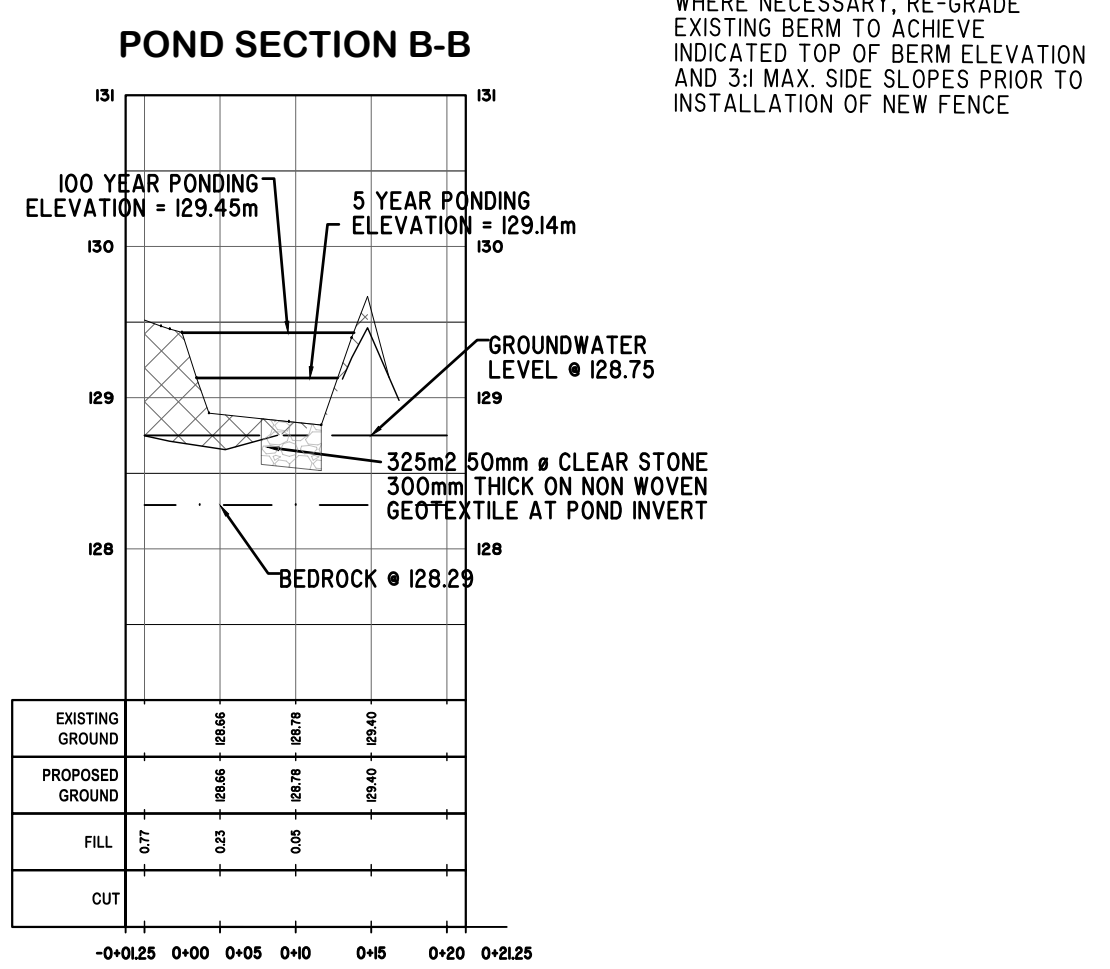
WASHING - WHEELS SHALL BE CLEANED TO REMOVE SEDIMENT PRIOR TO ENTRANCE ONTO PUBLIC RIGHT-OF-WAY. WHEN WASHING IS REQUIRED, IT SHALL BE DONE ON AN AREA STABILIZED WITH STONE AND WHICH DRAINS INTO AN APPROVED SEDIMENT TRAPPING DEVICE.

PERIODIC INSPECTION AND NEEDED MAINTENANCE SHALL BE APPROVED AFTER EACH RAIN.

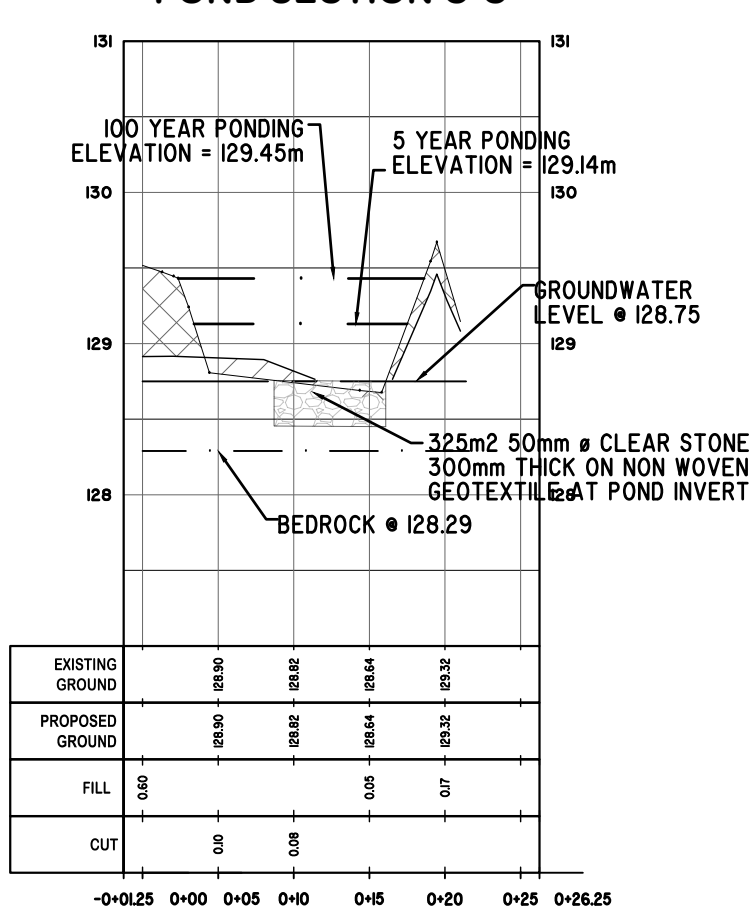
POND SECTION A-A



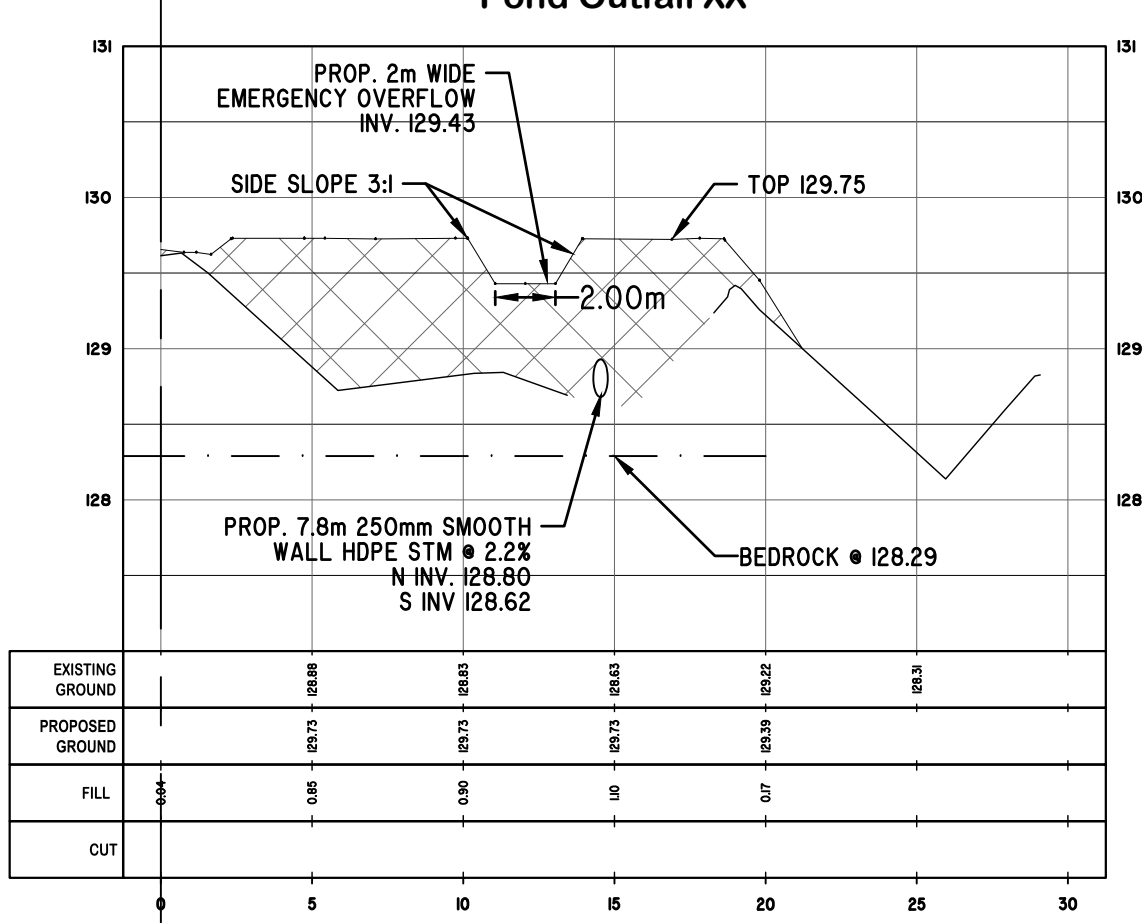
POND SECTION B-B



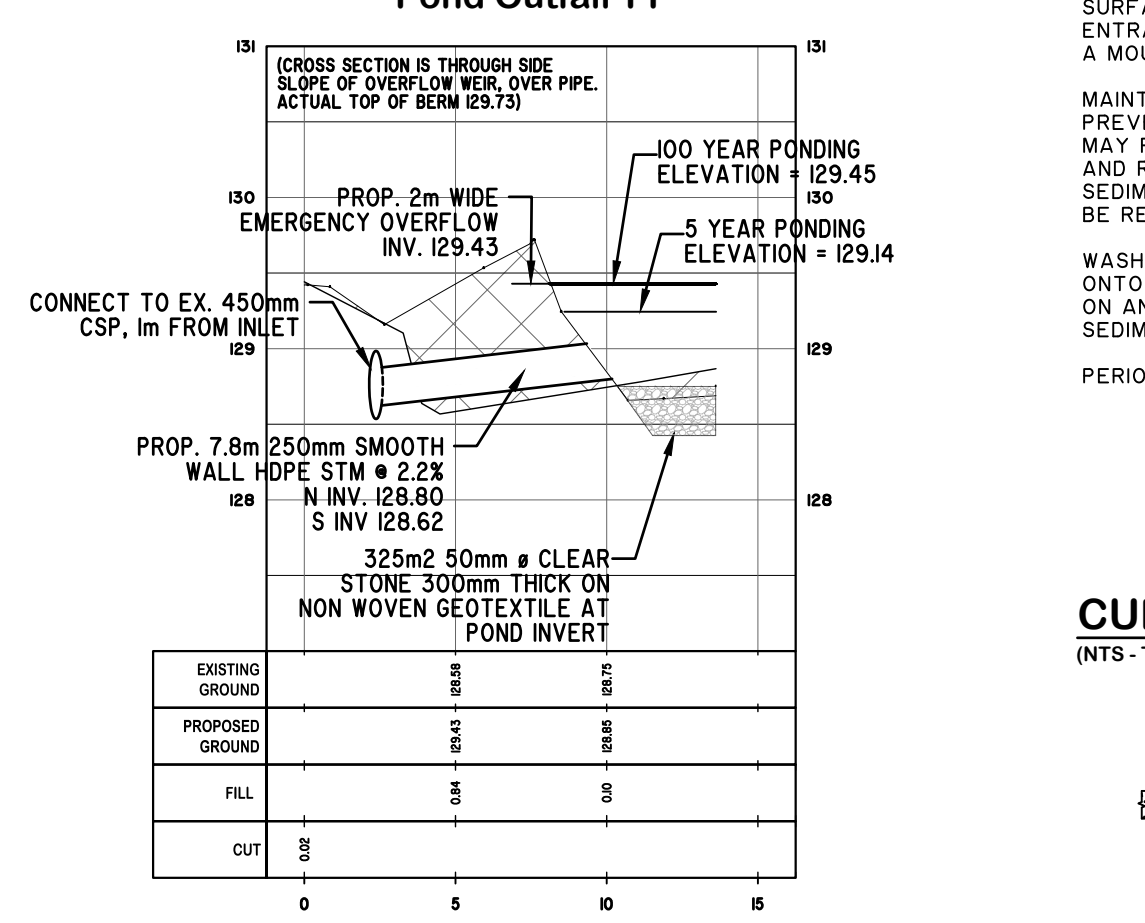
POND SECTION C-C



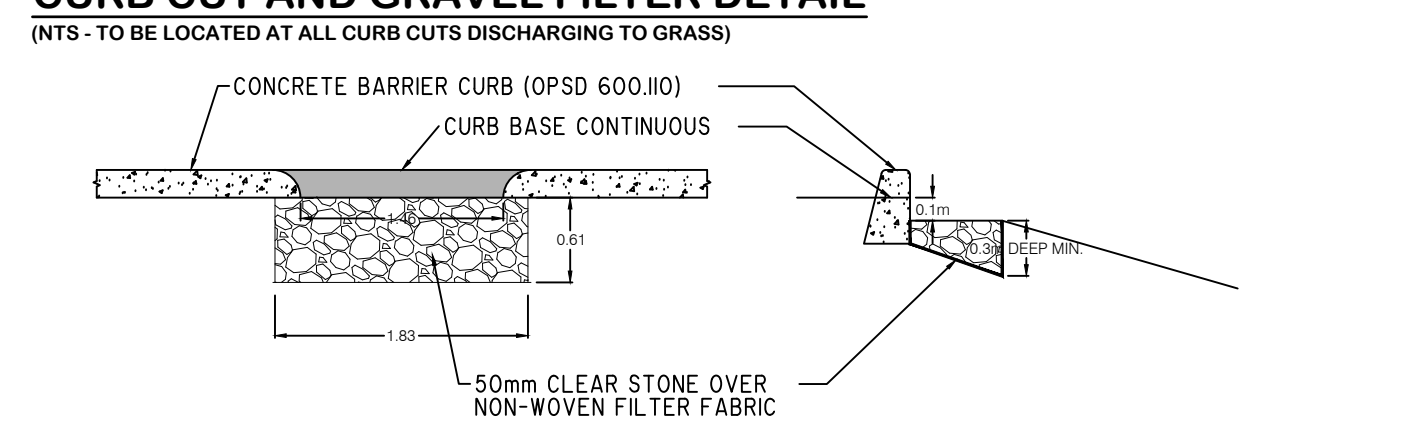
Pond Outfall XX



Pond Outfall YY



CURB CUT AND GRAVEL FILTER DETAIL



Designed By:

 Approved:

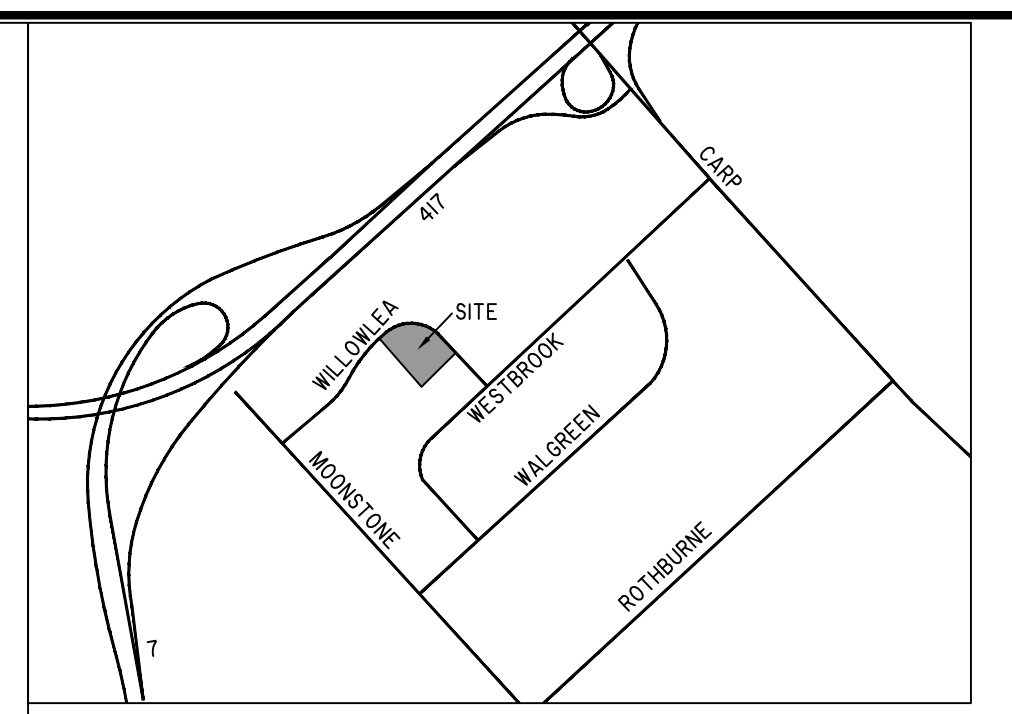
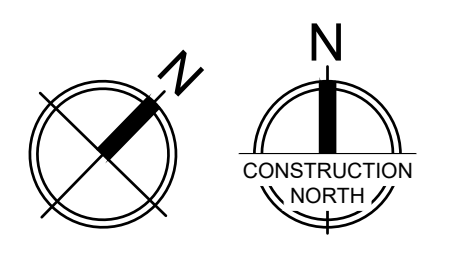
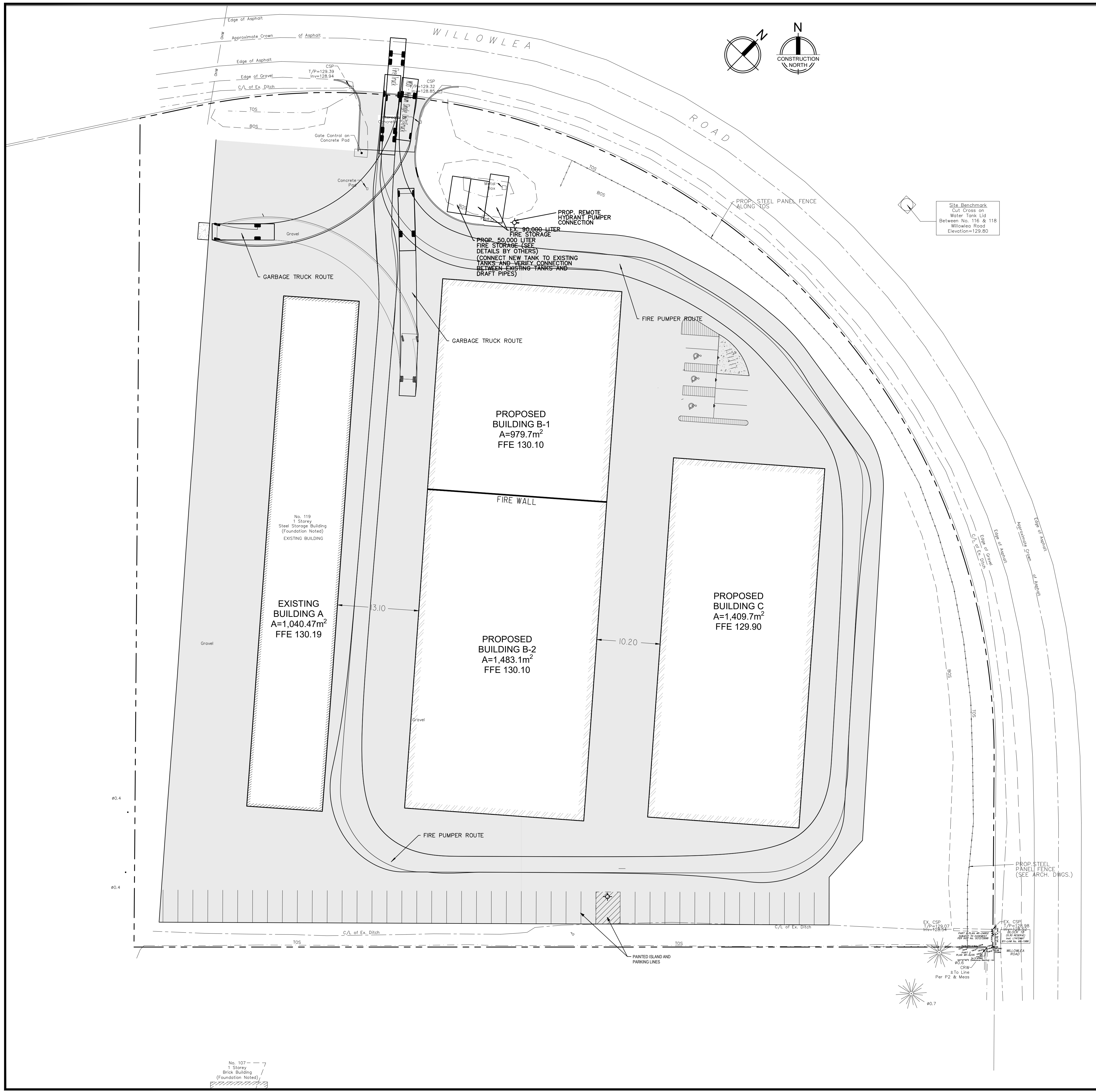
EDLISSE CONSULTING CIVIL ENGINEERS
 185 Blake Avenue, Willowdale, ON, M2M 1B5
 416-236-2341, info@ec2e.ca

PROJECT

 ACCESS PROPERTY DEVELOPMENT
 ACCESS GROUP OF COMPANIES
 109-121 WILLOWLEA RD.
 CARP, ONTARIO

DRAWING NOTES AND DETAILS

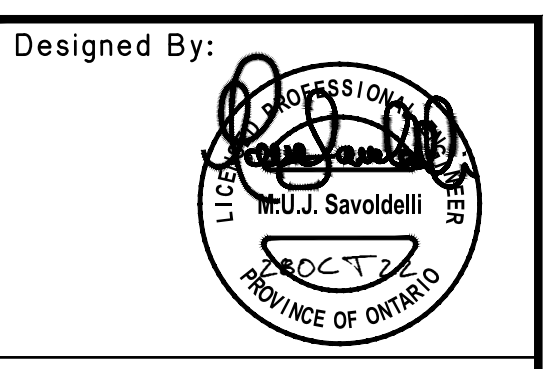
DATE	IDEC21	PROJECT NO.	2100
DRAWN	M.S.	DRAWING NO.	
CHECKED	C.C.		
SCALE	1:300		CS-201



REVISIONS	
#	DATE
1	3-DEC-21
2	28-OCT-22

EXISTING	PROPOSED	
---	---	CURB
---	---	STORM SEWER
---	---	SANITARY SEWER
---	---	WATERMAIN
---	---	UTILITY
---	---	PROPERTY LINE
○	○	LIGHT STANDARD
+	+	HYDRANT
+	+	ELEVATION
---	---	SEWER OR WM TO BE REMOVED
♿		HANDICAPPED PARKING (3.6m x 5.5m TYPICAL)
---	---	PAINTED PARKING LINE
⊕		DETECTOR CHECK VALVE
MB		METER & BACKFLOW PREVENT.
→		OVERLAND FLOW ROUTE
---	---	AREA OF POTENTIAL PONDING IN CASE OF BLOCKAGE OF CB

CAUTION NOTE:
 THESE DRAWINGS HAVE BEEN PREPARED FOR THE EXPRESSED AND SOLE USE OF THE OWNER, CONTRACTORS OR ANY OTHER THIRD PARTY ASSUME FULL RESPONSIBILITY FOR THE ACCURACY, SUFFICIENCY, AND SUITABILITY OF PURPOSE OF ANY AND ALL INFORMATION CONTAINED HEREIN.
 THIS DRAWING IS NOT TO BE SCALED.
 CONSTRUCTION MUST CONFORM TO ALL APPLICABLE CODES AND REQUIREMENTS OF AUTHORITIES HAVING JURISDICTION.
 ANY CONTRACTOR WORKING FROM DRAWINGS NOT SPECIFICALLY MARKED ISSUED FOR CONSTRUCTION MUST ASSUME FULL RESPONSIBILITY AND BEAR ALL COSTS FOR ANY CORRECTIONS OR DAMAGES RESULTING FROM HIS WORK.



Approved:

EC²E EDILESSÉ CONSULTING CIVIL ENGINEERS
 185 Blake Avenue Willowdale, ON, M2M 1B5 416-236-2341 info@ec2e.co

APD ACCESS PROPERTY DEVELOPMENT ACCESS GROUP OF COMPANIES
 109-121 WILLOWLEA RD. CARP, ONTARIO

DATE	IDEC21	PROJECT NO.	2100
DRAWN	M.S.	DRAWING NO.	CS-202
CHECKED	C.C.		
SCALE	1:300		

NOTE: THIS DRAWING TO BE READ IN CONJUNCTION WITH STANDARD DETAILS AND NOTES ON DRAWINGS CS100 AND CS-201 FOR THIS PROJECT

No. 107 --- 7
 1 Storey Brick Building (Foundation Noted)