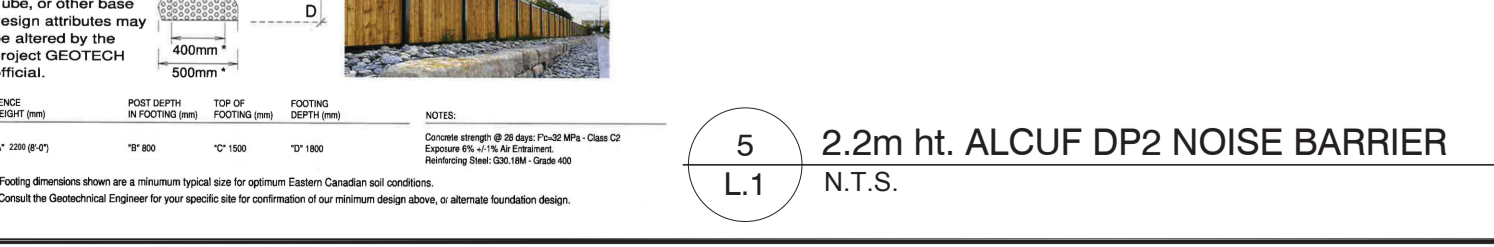
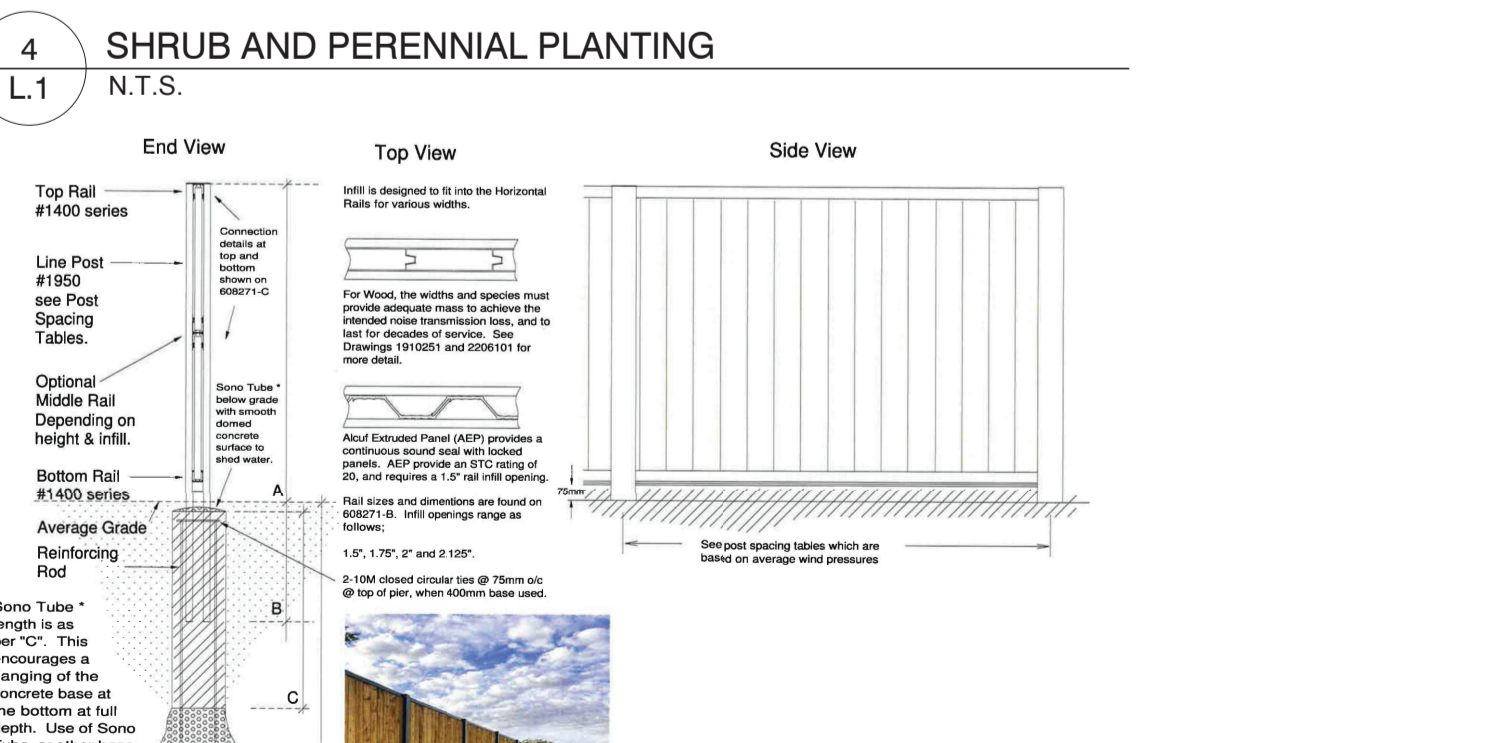
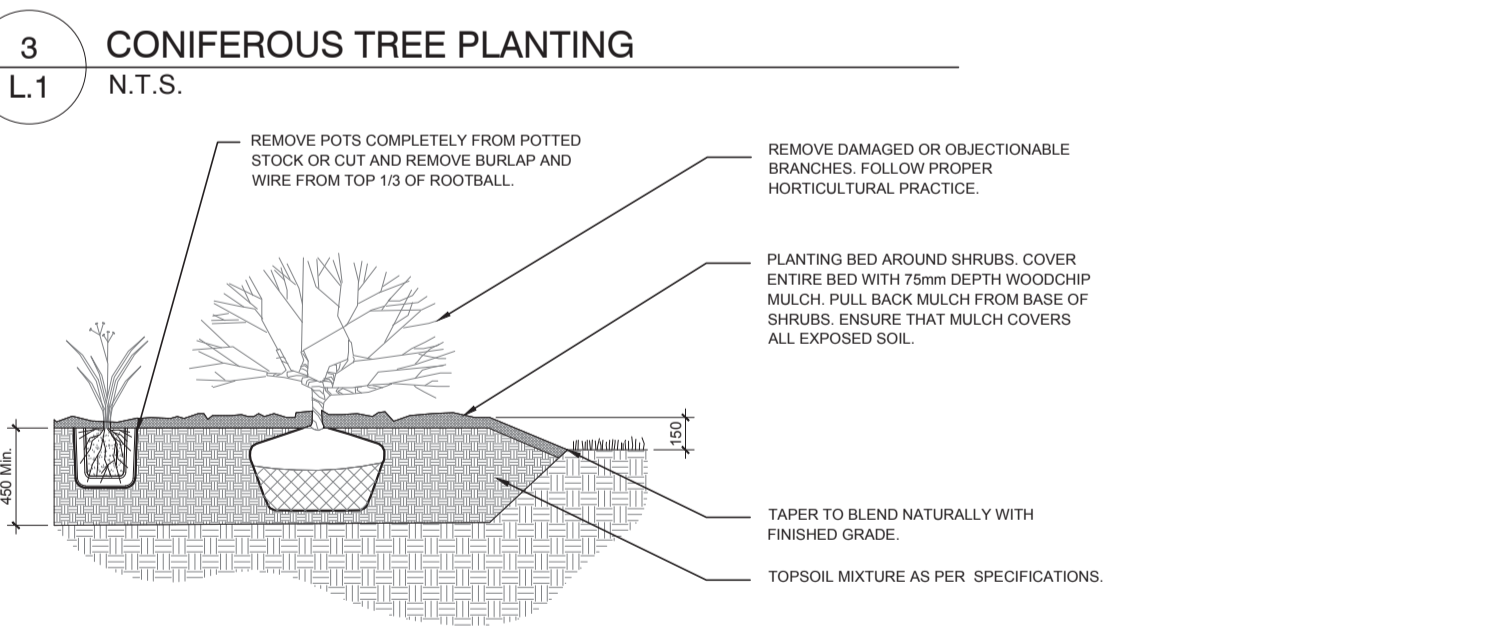
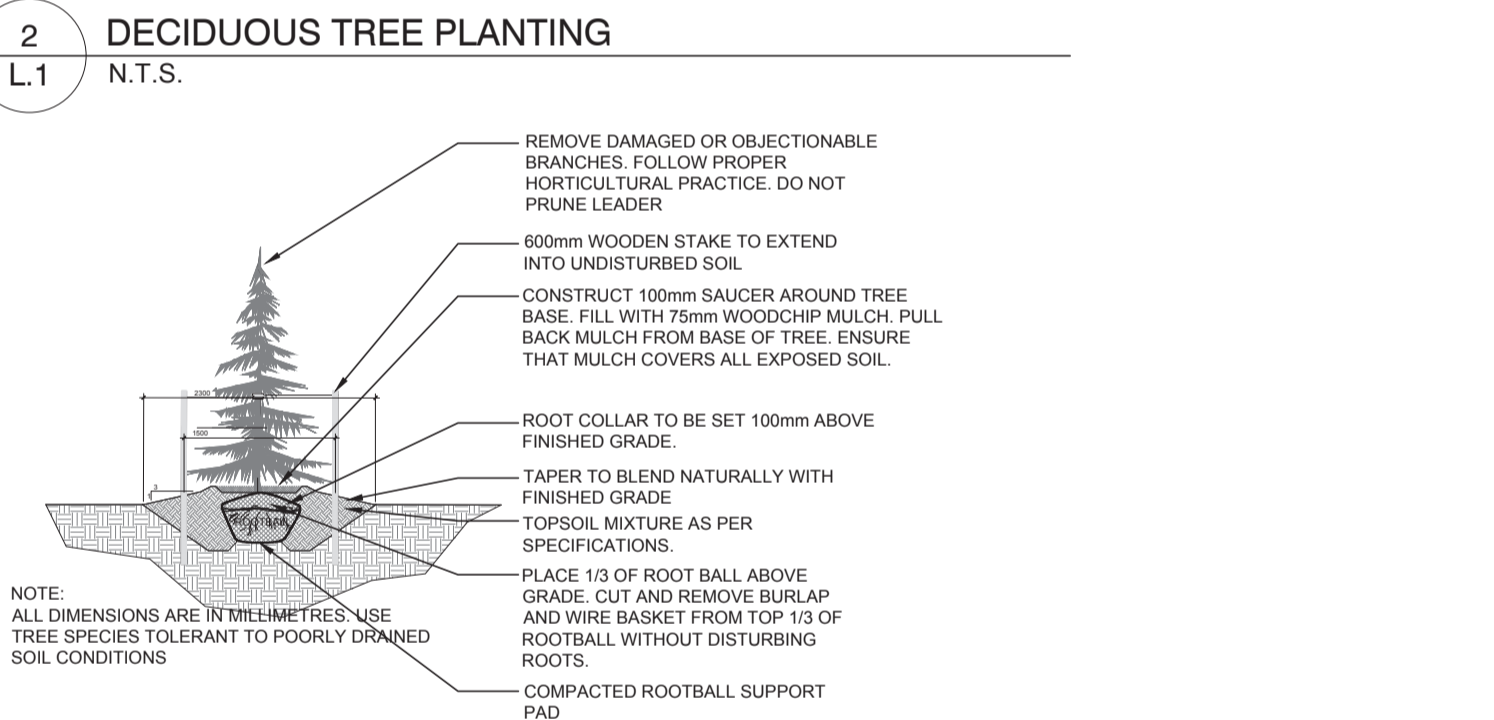
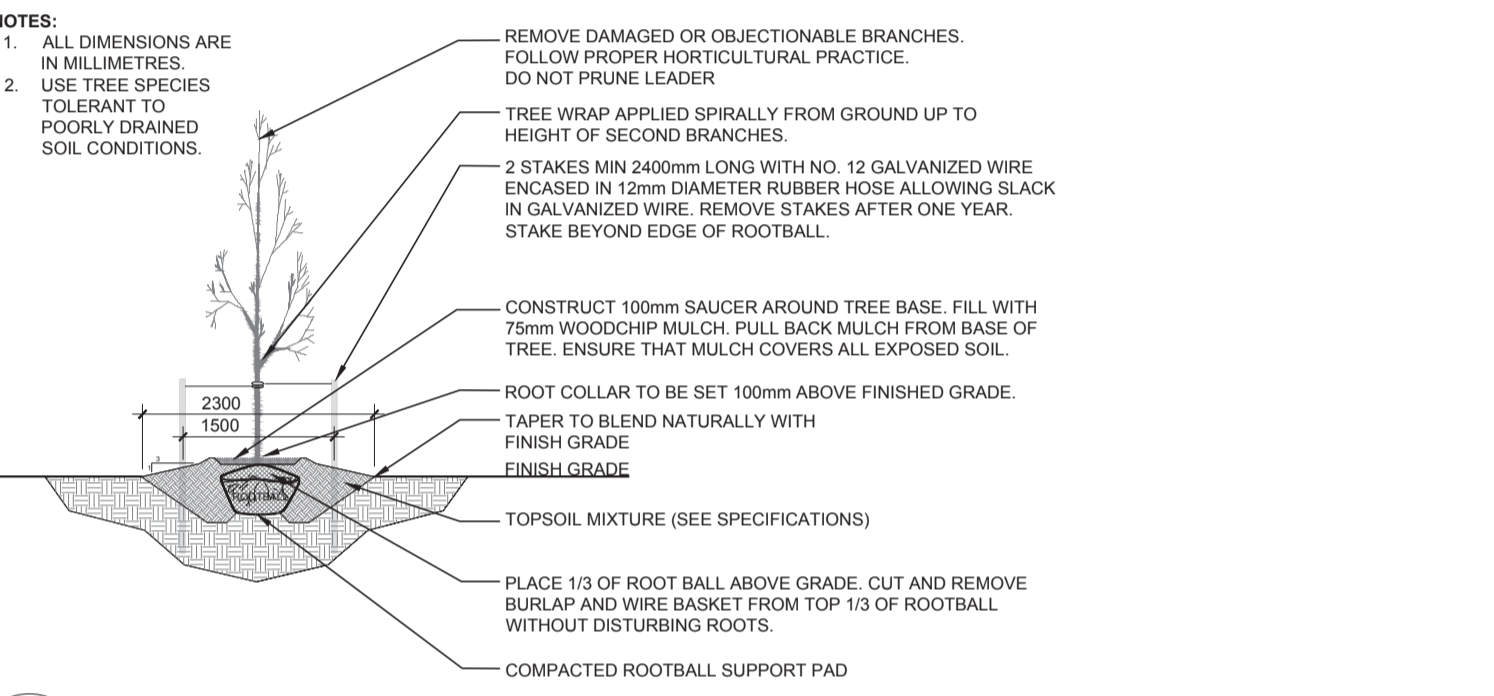




- GENERAL NOTES:**
- IT IS THE RESPONSIBILITY OF THE APPROPRIATE CONTRACTOR OR OFFICIAL TO REPORT ANY ERRORS, OMISSIONS OR DISCREPANCIES ON THIS PLAN WITH ACTUAL SITE CONDITIONS TO THE LANDSCAPE ARCHITECT BEFORE PROCEEDING WITH CONSTRUCTION.
 - THE CONTRACTOR IS TO NOTIFY ALL UTILITY COMPANIES AND AUTHORITIES PRIOR TO ANY EXCAVATION AND ASCERTAIN LOCATIONS OF UNDERGROUND SERVICES.
 - THE CONTRACTOR IS TO REINSTATE ALL AREAS AND ITEMS DAMAGED AS A RESULT OF CONSTRUCTION ACTIVITY.
 - THE CONTRACTOR IS TO COMPLY WITH ALL PERTINENT CODES AND BY-LAWS.
 - THE CONTRACTOR IS TO MAINTAIN A POSITIVE SURFACE RUN-OFF THROUGHOUT THE ENTIRE CONSTRUCTION PERIOD.
 - THE LANDSCAPE ARCHITECT IS NOT RESPONSIBLE FOR SUBSURFACE CONDITIONS.
 - THE CONTRACTOR IS TO IDENTIFY ALL EXISTING TREES TO REMAIN ON SITE WITH THE LANDSCAPE ARCHITECT PRIOR TO CONSTRUCTION.
 - THE CONTRACTOR IS TO STAKE THE PROPOSED LOCATION OF ALL PLANT MATERIAL IN CONJUNCTION WITH THE LANDSCAPE ARCHITECT PRIOR TO EXCAVATION.
 - MINIMUM DISTANCES FOR SELECTED DECIDUOUS TREES ARE AS FOLLOWS:
 - BUILDING FOUNDATIONS - 4.5M
 - SIDEWALKS - 1.5M
 - PUBLIC STREETS - 2.5M
 - UNDERGROUND INFRASTRUCTURE - 2.0M
 - ALL TREES WITHIN 1M OF UNDERGROUND UTILITY TRENCHES ARE TO BE EXCAVATED BY HAND.
 - REMOVE ALL PROTECTIVE WRAPPING FROM TREE TRUNKS AFTER INSTALLATION.
 - STAKING OF TREES SHALL ONLY BE PERFORMED IF NECESSARY.
 - ENSURE THAT MULCH IS PULLED BACK A MINIMUM DISTANCE OF 75MM FROM BASE OF TREE TRUNK.

PROPOSED PLANT LIST

KEY	QTY	BOTANICAL NAME	COMMON NAME	SIZE	CONDITION	REMARKS
TREES						
AM	13	Acer ginnala	Amur Maple	60mm ø	B&B	
FM	4	Acer x freemanii	Freeman's Maple	60mm ø	B&B	
HB	3	Celtis occidentalis	Hackberry	60mm ø	B&B	
HL	7	Gleditsia triacanthos var. inermis 'Shademaster'	Shademaster Honeylocust	60mm ø	B&B	
JTL	15	Syringa reticulata	Japanese Tree Lilac	60mm ø	B&B	
RM	4	Acer rubrum	Red Maple	60mm ø	B&B	
SM	4	Acer saccharum	Sugar Maple	60mm ø	B&B	
SS	4	Picea omorika	Serbian Spruce	1800 mm ht.	B&B	
WS	3	Picea glauca	White Spruce	1800 mm ht.	B&B	
SHRUBS						
AW	30	Spirea bumalda 'Anthony Waterer'	Anthony Waterer Spirea	600mm ht.	Potted	1000mm o.c.
BD	246	Juniperus sabina 'Blue Danube'	Blue Danube Juniper	600mm spr.	Potted	1000mm o.c.
CE	82	Thuja occidentalis 'Hedge'	Cedar Hedge	1200 mm ht.	Potted	450 mm o.c.
GS	30	Spirea x arguta	Garland Spirea	800mm spr.	Potted	1000 mm o.c.
HY	80	Hydrangea arborescens 'Annabelle'	Annabelle Hydrangea	3 gal. pot	Potted	800 mm o.c.
MP	152	Pinus mugo 'Pumilio'	Dwarf Mugo Pine	600mm spr.	Potted	1000mm o.c.
NB	20	Physocarpus opulifolius	Common Ninebark	600mm ht.	Potted	
PO	180	Potentilla fruticosa 'Goldfinger'	Goldfinger Potentilla	600mm ht.	Potted	800mm o.c.
PP	120	Spirea japonica 'Little Princess'	Little Princess Spirea	600mm pot	Potted	800 mm o.c.
SF	91	Sorbaria sorbifolia 'Sem'	Sem False Spirea	800mm ht.	Potted	
SU	154	Rhus typhina 'Laciniata'	Cutleaf Staghorn Sumac	800 mm ht.	Potted	1200 mm o.c.
ORNAMENTAL GRASS AND PERENNIALS						
AJ	295	Sedum telephium 'Autumn Joy'	Autumn Joy Sedum	150mm pot	Potted	400 mm o.c.
DL	259	Stella D'Oro Day Lily	Stella D'Oro Day Lily	150mm pot	Potted	400 mm o.c.
KF	132	Calamagrostis 'Karl Foerster'	Karl Foerster Grass	250mm pot	Potted	800 mm o.c.



1 LANDSCAPE PLAN
L.1 SCALE 1:400

APPROVED
By Lily Xu at 6:23 pm, Jul 12, 2023

Lily Xu

LILY XU, MCIP, RPP
MANAGER, DEVELOPMENT REVIEW SOUTH PLANNING, INFRASTRUCTURE & ECONOMIC DEVELOPMENT DEPARTMENT, CITY OF OTTAWA

CLIENT
CLARIDGE HOMES

CONSULTANTS
ARCHITECTS: RLA ARCHITECTURE, RODERICK LAHEY ARCHITECT INC., 95 BEECH STREET, OTTAWA, ONTARIO K1S 5J6, Tel: (613) 724-9932
SURVEYORS: ANNIS, O'SULLIVAN, VOLLEBEK LTD., 14 Concourse Gate, Suite 500, Nepean, Ont. K2E 7J6, Phone: (613) 727-0850 / Fax: (613) 727-1079
CIVIL ENGINEERS: IBI GROUP, 400 - 333 Preston Street, Ottawa ON K1S 5N4 Canada, tel 613 225 1311 fax 613 225 9868, ibigroup.com

LEGEND

4	REVISED AS PER CITY COMMENTS	03/28/2023	LC	JL
3	REVISED AS PER CITY COMMENTS	12/14/2022	LC	JL
2	REVISED AS PER CITY COMMENTS	08/29/2022	LC	JL
1	ISSUED FOR COMMENTS AND REVIEW	01/10/2022	LC	JL

No. Issue Date DR CK

JAMES B. LENOX & ASSOCIATES INC. LANDSCAPE ARCHITECTS
3332 CARLING AVE. OTTAWA, ONTARIO K2H 5A8
Tel. (613) 722-5168 Fax. (866) 344-3942

PROJECT
SPRATT ROAD ZENS
4624 SPRATT ROAD, OTTAWA ON

DRAWING
LANDSCAPE PLAN

STAMP
ASSOCIATION OF LANDSCAPE ARCHITECTS OF ONTARIO

SCALE
AS SHOWN

START DATE
DECEMBER 2021

PROJECT NO.
21-CLG-2128

DRAWING NO.
L.1

PLOT SIZE A1