

Copyright Reserved

The Contractor shall verify and be responsible for all dimensions. DO NOT locate the drawing - any errors or omissions shall be reported to Stantec without delay. The Copyrights to all designs and drawings are the property of Stantec. Reproduction or use for any purpose other than that authorized by Stantec is forbidden.

Legend

- PROPOSED SILT FENCE BOUNDARY AS PER OPSD 219.110
- PROPOSED MUD MAT LOCATION
- PROPOSED CATCH BASIN MH PROTECTION AS PER FLEX STORM INLET FILTERS DETAIL ITEM CODE P-RD-240-223-FX
- PROPOSED CATCH BASIN MH PROTECTION AS PER FLEX STORM INLET FILTERS DETAIL ITEM CODE P-RD-290-270-FX

Notes

Best Management Practices

CONTRACTOR TO PROVIDE EROSION AND SEDIMENT CONTROLS (BEST MANAGEMENT PRACTICES) DURING CONSTRUCTION OF THIS PROJECT.

EROSION MUST BE MINIMIZED AND SEDIMENTS MUST BE REMOVED FROM CONSTRUCTION SITE RUN-OFF IN ORDER TO PROTECT DOWNSTREAM AREAS. DURING ALL CONSTRUCTION, EROSION AND SEDIMENTATION SHOULD BE CONTROLLED BY THE FOLLOWING TECHNIQUES:

1. LIMIT THE EXTENT OF EXPOSED SOILS AT ANY GIVEN TIME.
2. REVEGETATE EXPOSED AREAS AND SLOPES AS SOON AS POSSIBLE.
3. MINIMIZE AREA TO BE CLEARED AND GRUBBED.
4. PROTECT EXPOSED SLOPES WITH PLASTIC OR SYNTHETIC MULCHES.
5. INSTALL CATCH BASIN INSERTS OR EQUIVALENT IN ALL PROPOSED CATCH BASINS AND CATCH BASIN MANHOLES AND IN ALL EXISTING CATCH BASINS THAT WILL RECEIVE RUN-OFF FROM THE SITE.
6. A SILT FENCE SHALL BE INSTALLED AROUND THE PERIMETER OF ALL AND ANY STOCKPILES OF MATERIAL TO BE USED OR REMOVED FROM SITE. (LOCATION TO BE DETERMINED)
7. A VISUAL INSPECTION SHALL BE DONE DAILY ON SEDIMENT CONTROL MEASURES AND CLEANED OF ANY ACCUMULATED SILT AS REQUIRED. THE DEPOSITS WILL BE DISPOSED OFF SITE AS PER THE REQUIREMENTS OF THE CONTRACT.
8. SEDIMENT CONTROL BARRIERS MAY ONLY BE REMOVED TEMPORARILY WITH APPROVAL OF CONTRACT ADMINISTRATOR TO ACCOMMODATE CONSTRUCTION OPERATIONS. ALL AFFECTED BARRIERS MUST BE REINSTATED AT NIGHT WHEN CONSTRUCTION IS COMPLETED. NO REMOVAL WILL OCCUR IF THERE IS A SIGNIFICANT RAINFALL EVENT ANTICIPATED (>10mm) UNLESS A NEW DEVICE HAS BEEN INSTALLED TO PROTECT EXISTING STORM AND SANITARY SEWER SYSTEMS, OR DOWNSTREAM WATERCOURSES.
9. NO REFUELING OR CLEANING OF EQUIPMENT IS PERMITTED NEAR ANY EXISTING WATERWAY.
10. CONTRACTOR SHALL REMOVE SEDIMENT CONTROL MEASURES WHEN, IN THE OPINION OF THE CONTRACT ADMINISTRATOR, THE MEASURES IS NO LONGER REQUIRED. NO CONTROL MEASURES SHALL BE PERMANENTLY REMOVED WITHOUT PRIOR WRITTEN AUTHORIZATION FROM THE CONTRACT ADMINISTRATOR.
11. THE CONTRACTOR SHALL PERIODICALLY, OR WHEN REQUESTED BY THE CONTRACT ADMINISTRATOR, CLEAN OUT ACCUMULATED SEDIMENTS AS REQUIRED.
12. THE CONTRACTOR SHALL IMMEDIATELY REPORT TO THE ENGINEER ANY ACCIDENTAL DISCHARGES OF SEDIMENT MATERIAL INTO THE WATERCOURSE. APPROPRIATE RESPONSE MEASURES, INCLUDING ANY REPAIRS TO EXISTING CONTROL MEASURES OR THE IMPLEMENTATION OF ADDITIONAL CONTROL MEASURES, SHALL BE CARRIED OUT BY THE CONTRACTOR WITHOUT DELAY.
13. CONTRACTOR SHALL INSTALL MUD MATS AT ALL ENTRANCES TO THE SITE.

Revision	By	Appd.	YY.MM.DD	
5	ISSUED FOR 3RD SUBMISSION	AJ	SG	23.06.01
4	REVISED SITE PLAN	AJ	SG	23.05.19
3	REVISED AS PER CITY COMMENTS	AJ	SG	23.04.26
2	REVISED AS PER CITY COMMENTS	AJ	SG	23.03.31
1	ISSUED FOR 1ST SUBMISSION	AJ	SG	22.12.07
0	FOR REVIEW	AJ	SG	21.11.23

File Name:	MJS	SG	MJS	21.06.29
160401657.DB	Dwn.	Chkd.	Dgn.	YY.MM.DD

Permit-Seal



Client/Project

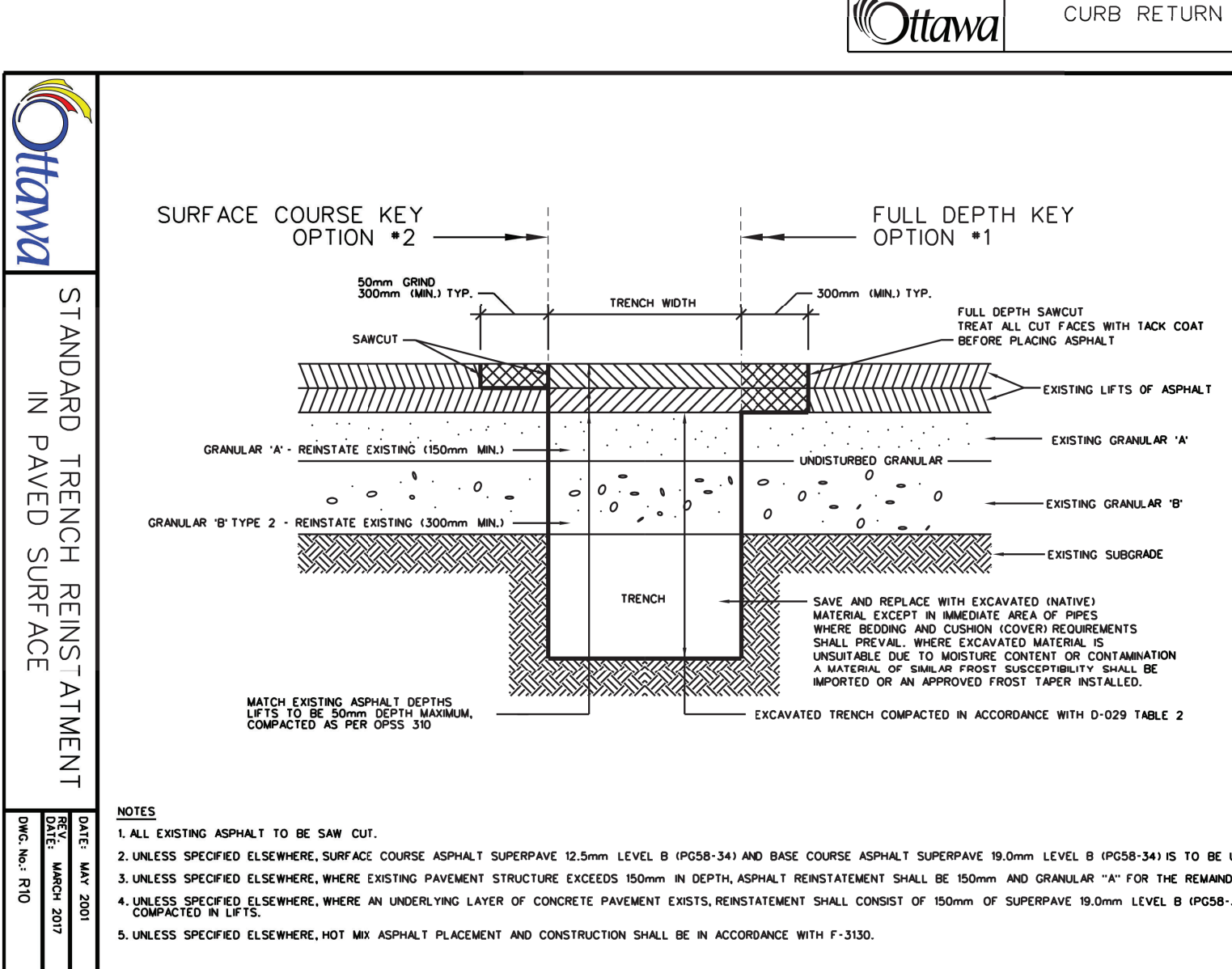
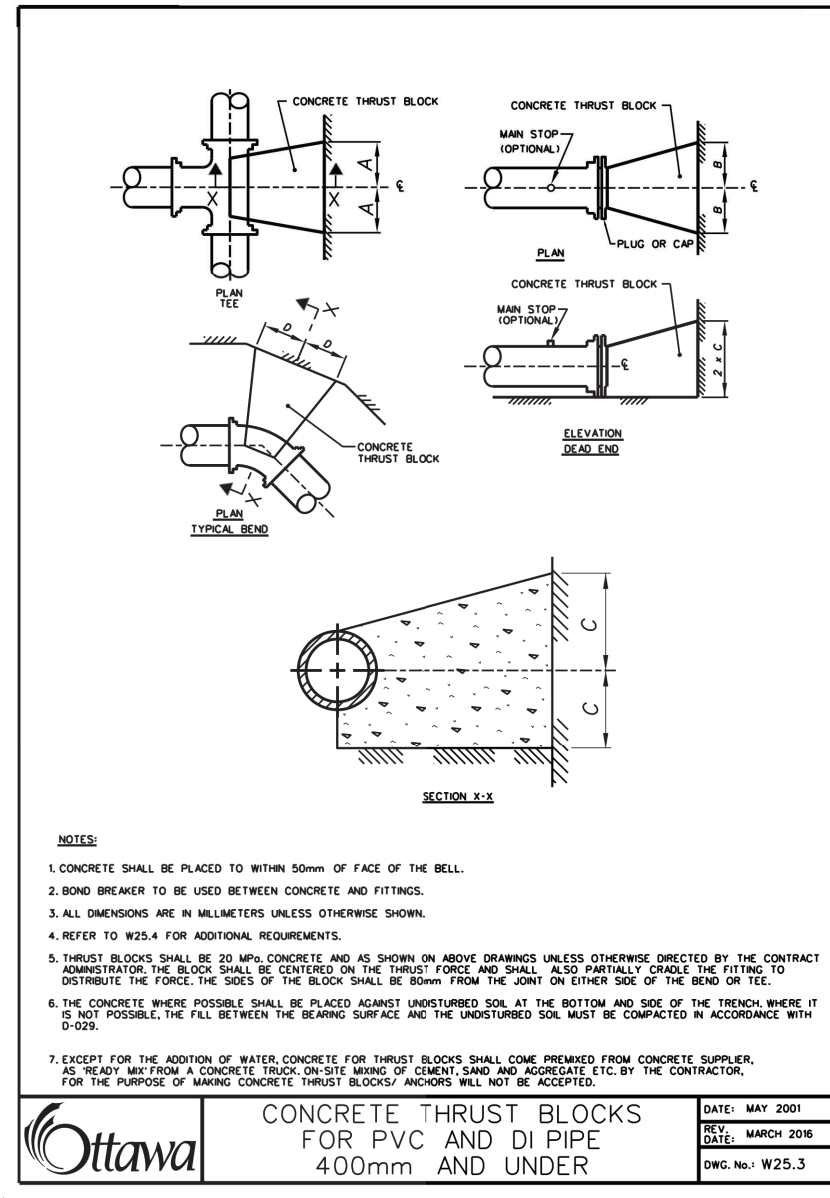
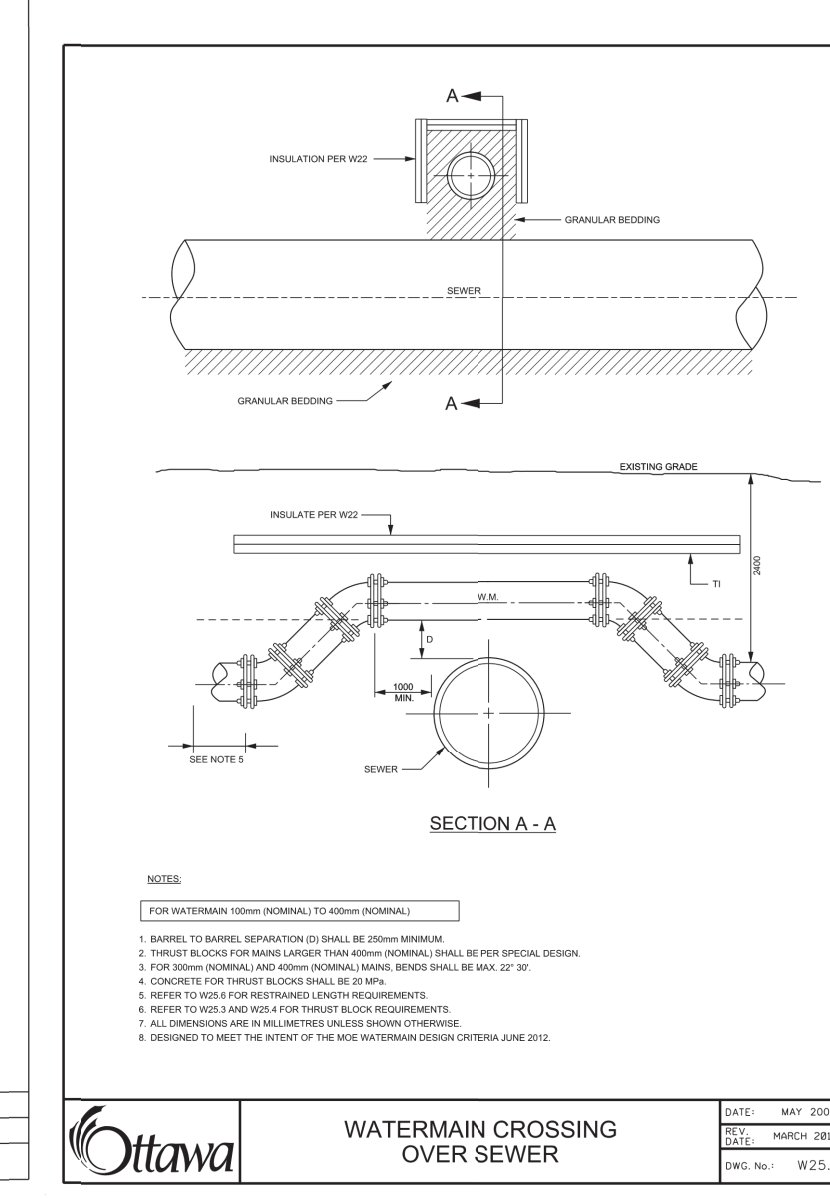
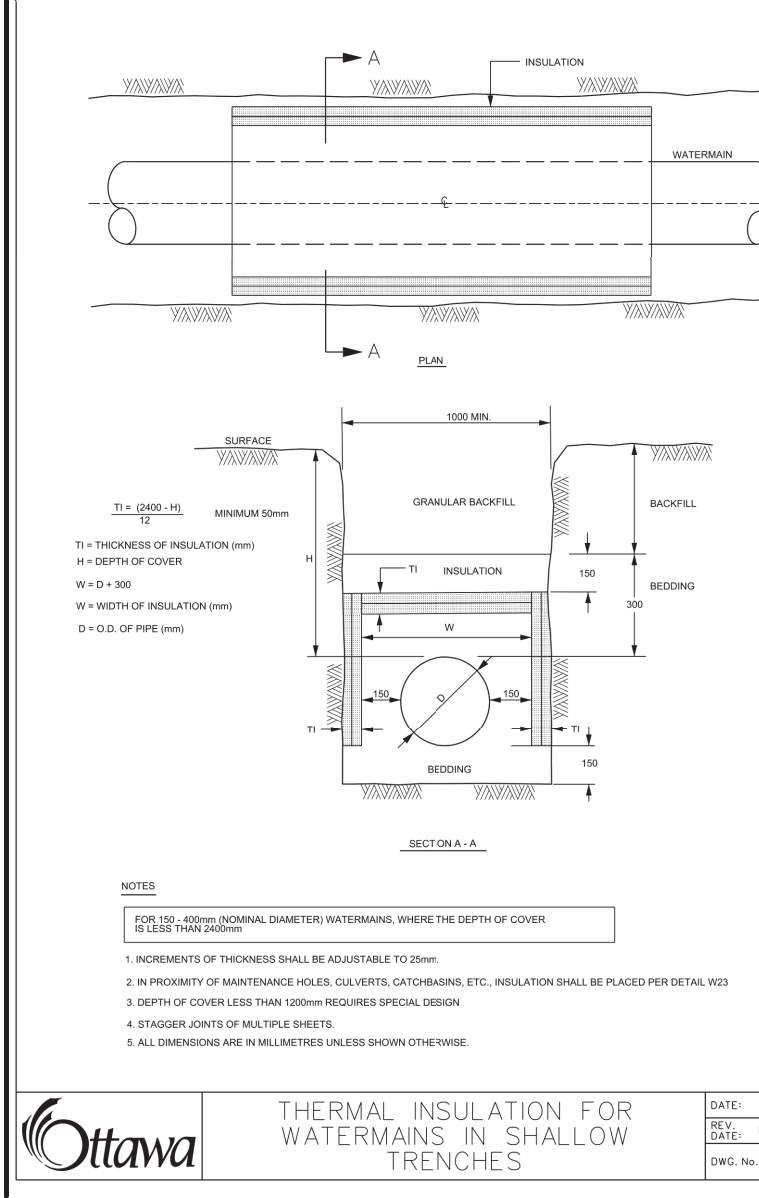
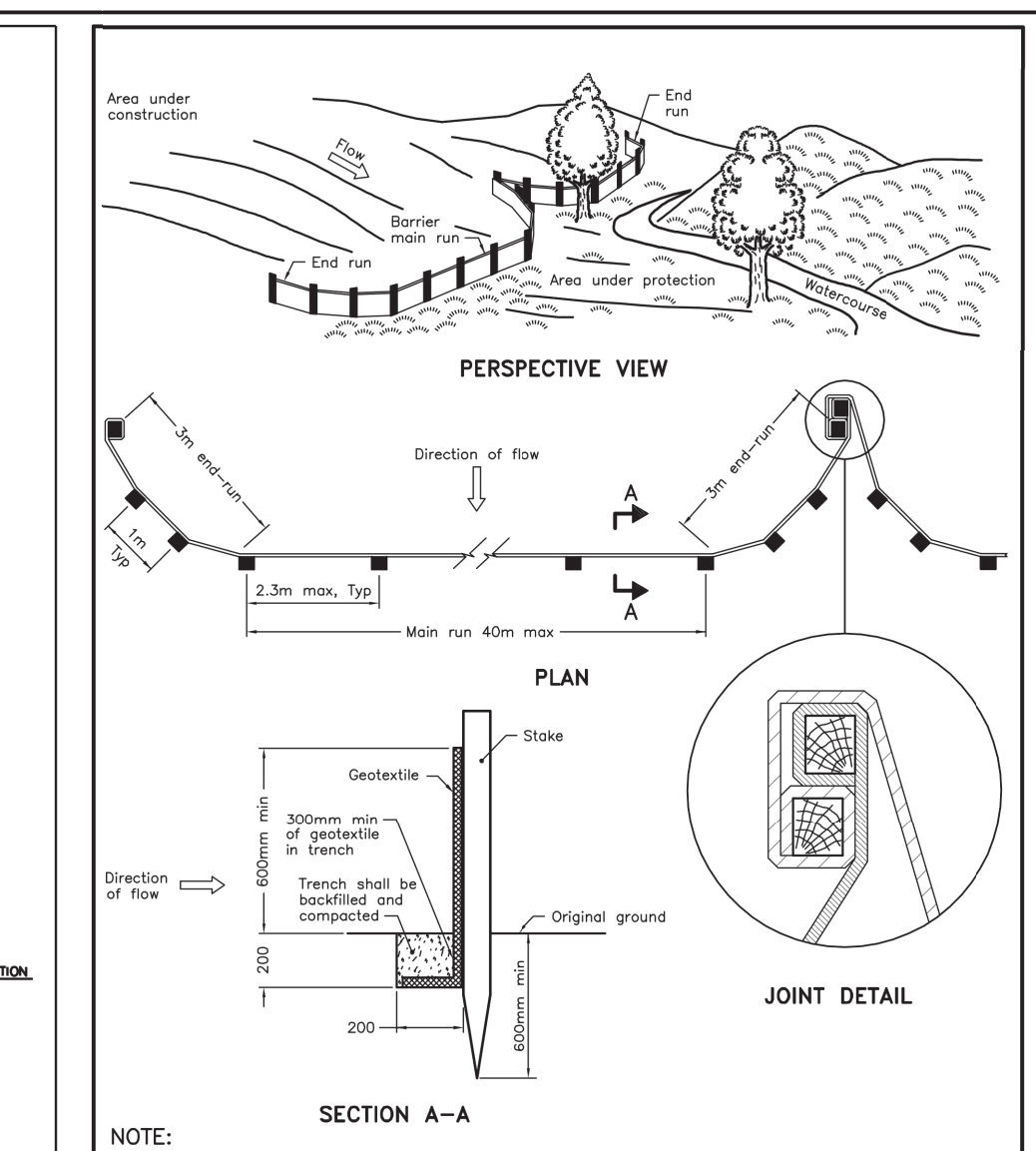
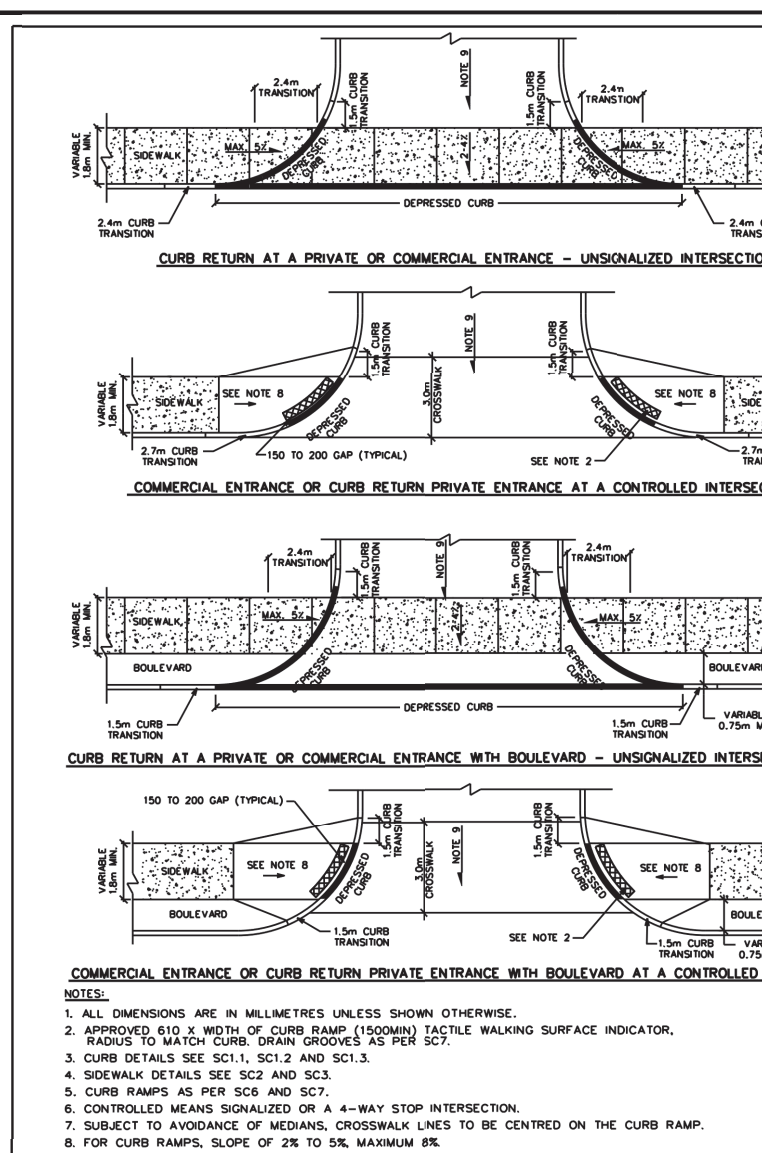
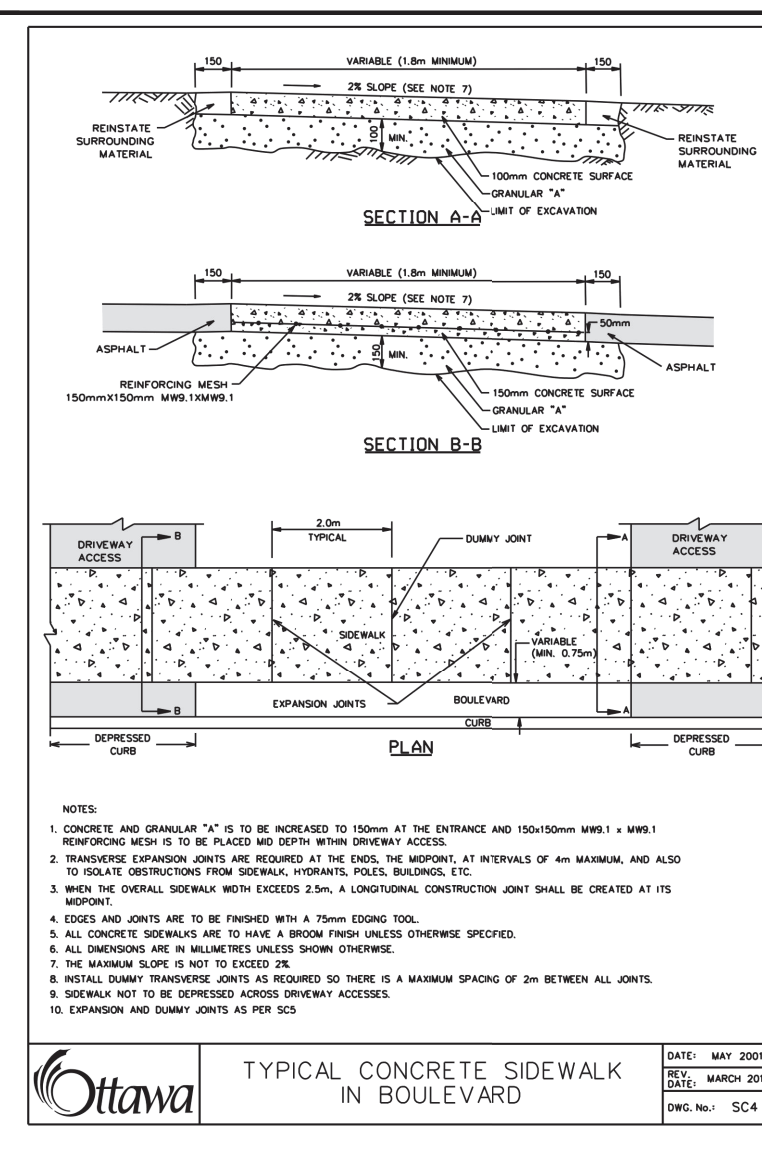
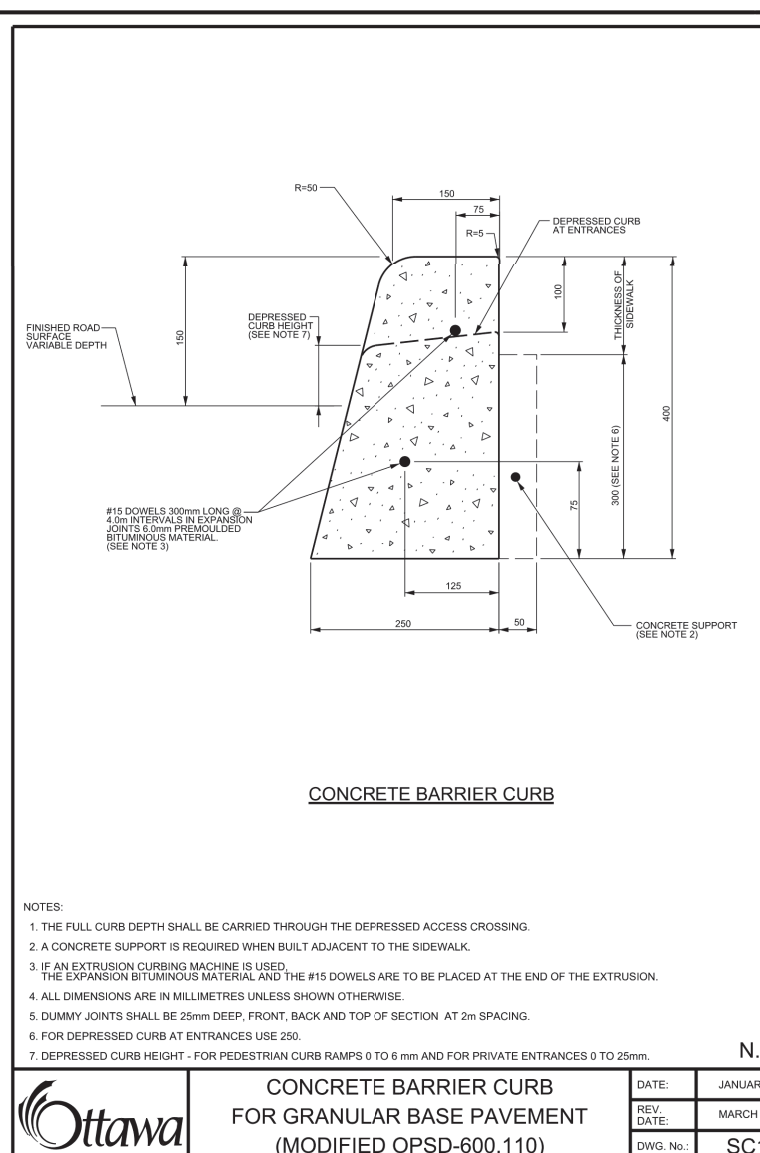
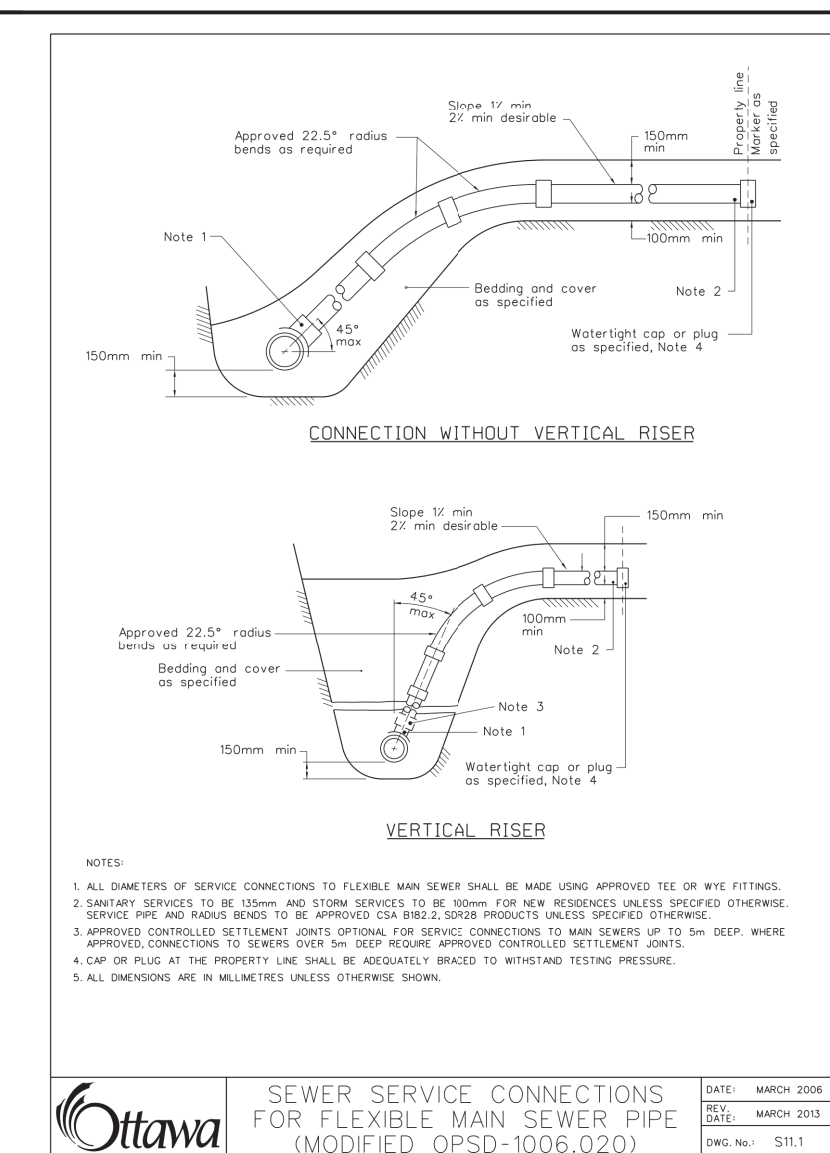
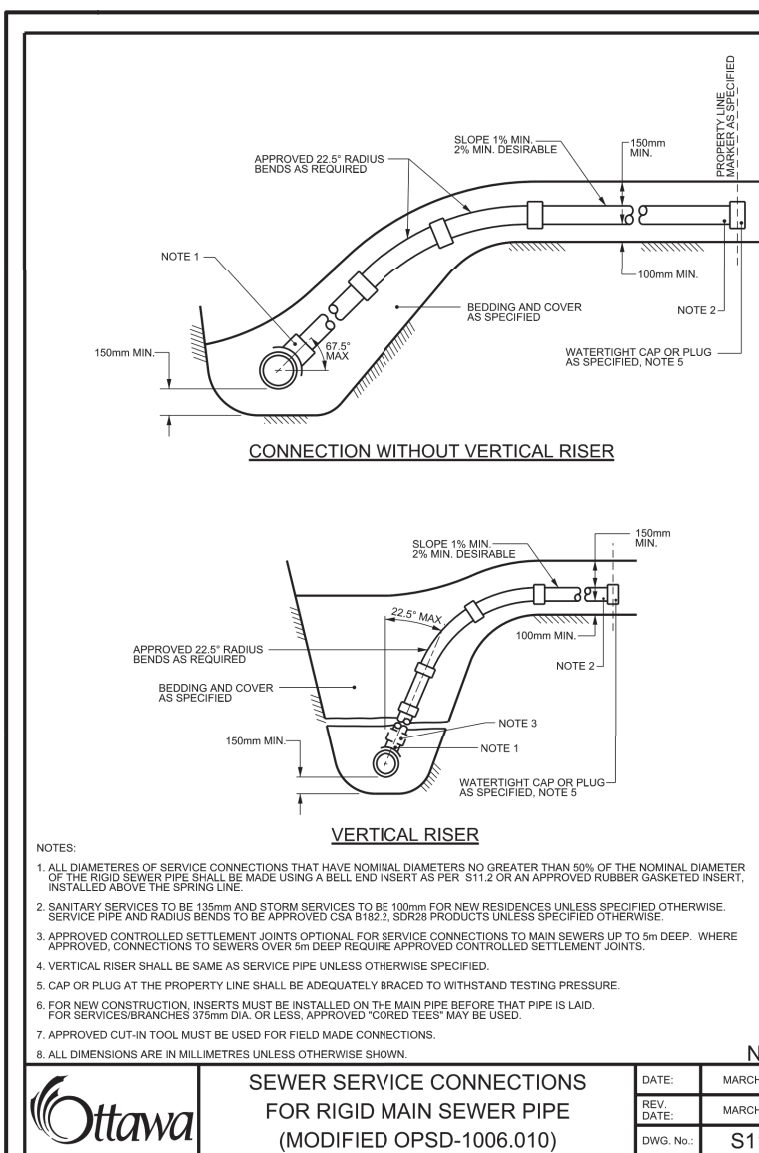
Mattamy Homes

HMB PHASE 8

OTTAWA, ON

Title
EROSION CONTROL PLAN
AND DETAIL SHEET

Project No.	Scale	0	5	15	25m
160401657	1:500				
Drawing No.	Sheet	Revision			
EC/DS-1	6 of 8	5			



APPROVED
By Lily Xu at 5:17 pm, Jul 13, 2023

LILY XU, MCIP, RPP
MANAGER, DEVELOPMENT REVIEW SOUTH
PLANNING, INFRASTRUCTURE & ECONOMIC
DEVELOPMENT DEPARTMENT, CITY OF OTTAWA

1. SURFACE FLOWS TO BE DIRECTED AWAY FROM EES CLEAR STONE BEDDINGS AS IT IS BEING NOT ALLOWED TO BACKFILL.

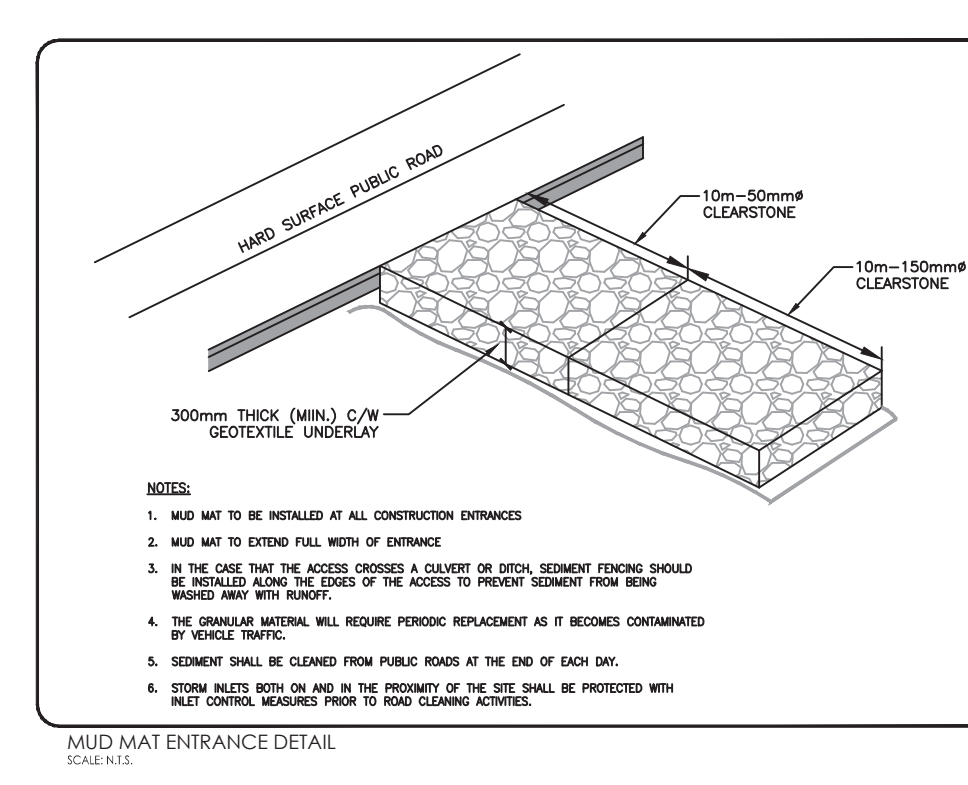
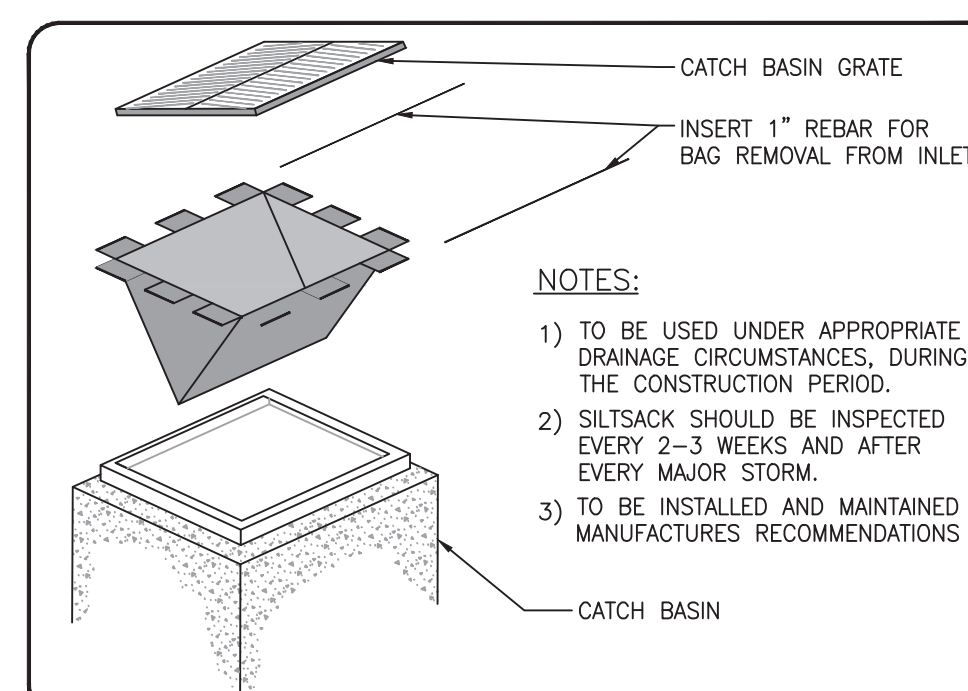
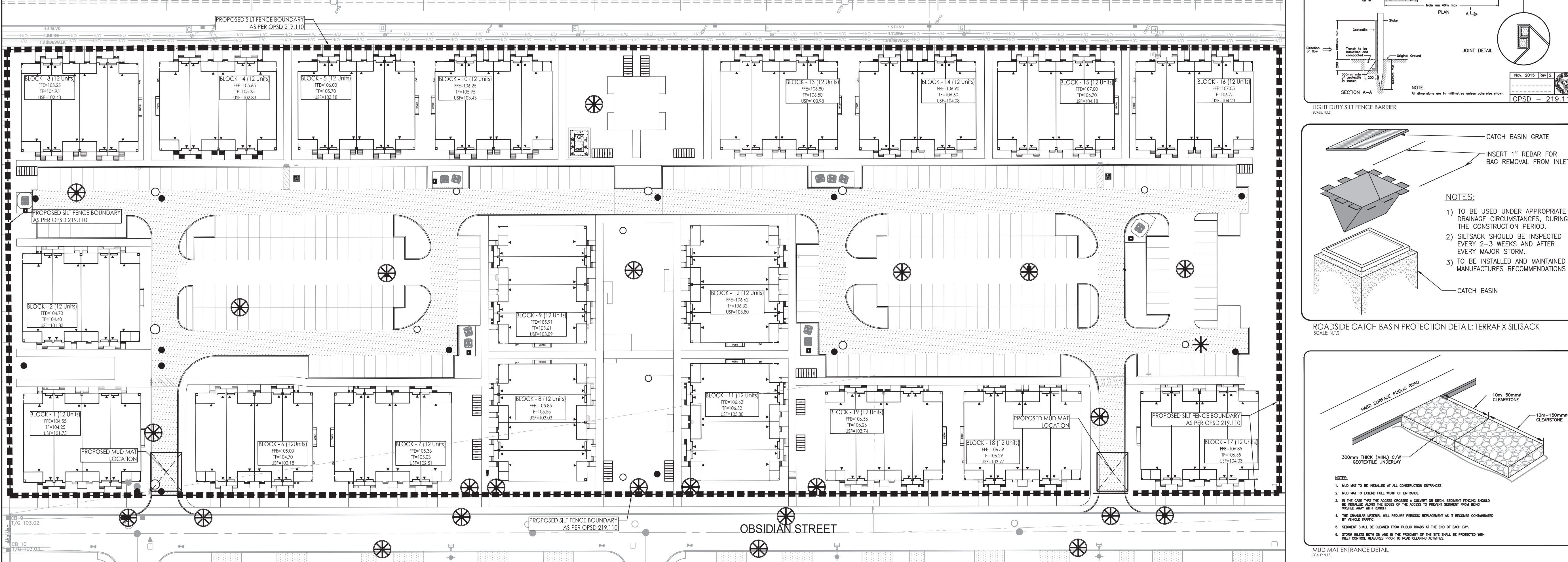
2. FUELING OF MACHINERY TO BE DONE AT DESIGNATED LOCATIONS AWAY FROM PROPOSED EES LOCATIONS.

3. STORAGE OF MACHINERY AND MATERIAL, FILL, ETC. TO BE DONE IN DESIGNATED AREAS AWAY FROM PROPOSED EES LOCATIONS.

4. EQUIPMENT MOVEMENT THROUGH PROPOSED EES LOCATIONS TO BE CONTROLLED.

5. REGULAR INSPECTION AND MAINTENANCE OF EROSION CONTROL FEATURES CORRESPONDING TO CATCH BASINS, CATCH BASIN MANHOLES, AND PERFORATED SUBDRAINS.

6. THE EES SYSTEM IS TO BE JET FLUSHED AND INSPECTED VIA CCTV UPON CONSTRUCTION COMPLETION PRIOR TO ACTIVATION.



W:\active\160401657\design\drawing\det\160401657_DB_RH_8.0.dwg
2023/06/14 11:15 AM by: thiffault, DGM