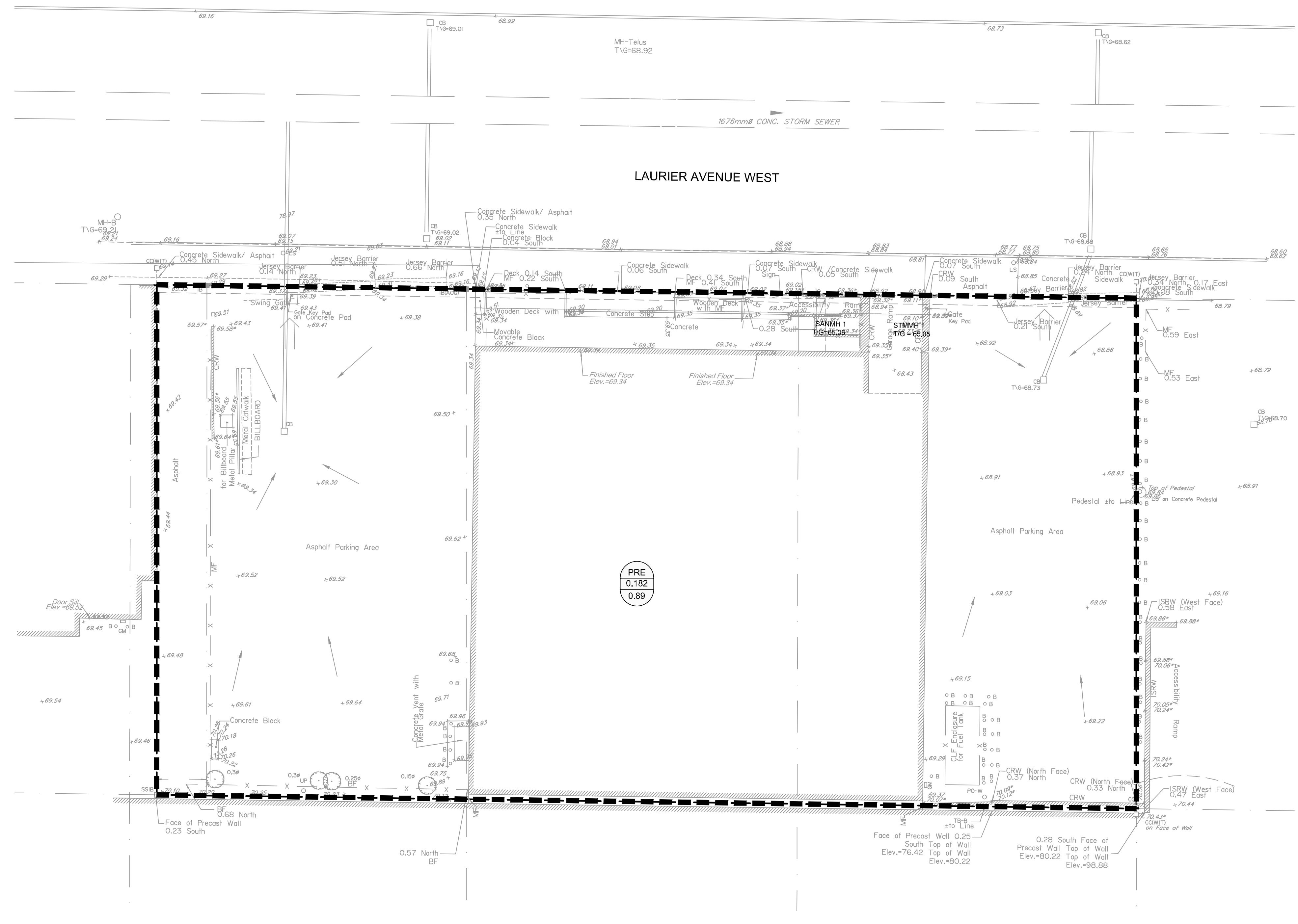


GENERAL NOTES:

- COORDINATE AND SCHEDULE ALL WORK WITH OTHER TRADES AND CONTRACTORS.
- DETERMINE THE EXACT LOCATION, SIZE, MATERIAL AND ELEVATION OF ALL EXISTING UTILITIES PRIOR TO COMMENCING CONSTRUCTION. PROTECT AND ASSUME RESPONSIBILITY FOR ALL EXISTING UTILITIES WHETHER OR NOT SHOWN ON THIS DRAWING.
- ALL ELEVATIONS ARE GEODETIC.
- REFER TO GEOTECHNICAL INVESTIGATION REPORT (PG65195-1, DATED FEBRUARY 10, 2020), PREPARED BY PATERSON GROUP INC., FOR SUBSURFACE CONDITIONS, CONSTRUCTION RECOMMENDATIONS, AND GEOTECHNICAL INSPECTION REQUIREMENTS. THE GEOTECHNICAL CONSULTANT IS TO REVIEW ON-SITE CONDITIONS AFTER EXCAVATION PRIOR TO PLACEMENT OF THE GRANULAR MATERIAL.
- REFER TO THE DEVELOPMENT SERVICING STUDY AND STORMWATER MANAGEMENT REPORT (R-2022-124) PREPARED BY NOVATECH.

LEGEND

- DRAINAGE AREA LIMITS
- PRE-DEVELOPMENT AREA ID
PRE-DEVELOPMENT DRAINAGE AREA (ha)
1.5 YEAR WEIGHTED RUNOFF COEFFICIENT
- EXISTING CONCRETE CURB
- EXISTING VALVE & VALVE BOX
- EXISTING SERVICE POST
- EXISTING HYDRANT
- EXISTING CATCHBASIN
- EXISTING CATCHBASIN MH
- EXISTING UTILITY POLE
CW GUY WIRES
- EXISTING DRAINAGE DIRECTION ARROWS
- EXISTING OVERLAND FLOW

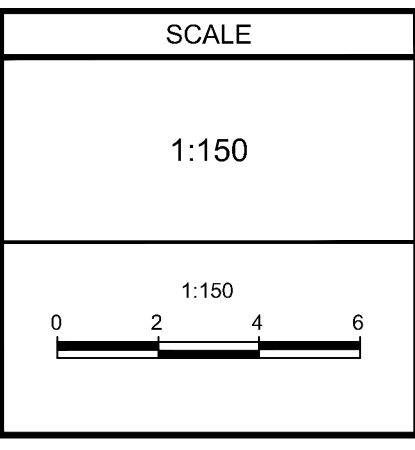


NOTE:
THE POSITION OF ALL POLE LINES, CONDUITS, WATERMANS, SEWERS AND OTHER UNDERGROUND AND OVERGROUND UTILITIES AND STRUCTURES IS NOT NECESSARILY SHOWN ON THE CONTRACT DRAWINGS, AND WHERE SHOWN, THE ACCURACY OF THE POSITION OF SUCH UTILITIES AND STRUCTURES IS NOT GUARANTEED. BEFORE STARTING WORK, DETERMINE THE EXACT LOCATION OF ALL SUCH UTILITIES AND STRUCTURES AND ASSUME ALL LIABILITY FOR DAMAGE TO THEM.

OWNER INFORMATION
JADCO Group
345 Boulevard Samson
Laval, QC H7X 2Z7

CONTACT: ANDRÉ DOUDAK
Tel: (613) 791-1970
EMAIL: adoudak@jadcogroup.com

No.	REVISION	DATE	BY
2.	REVISED AS PER CITY COMMENTS	JUN 5/23	FST
1.	ISSUED FOR SPC APPLICATION	AUG 30/22	FST



FOR REVIEW ONLY

DESIGN	CV
CHECKED	FST
DRAWN	CV
CHECKED	FST
APPROVED	FST

NOVATECH
Engineers, Planners & Landscape Architects
Suite 200, 240 Michael Cowpland Drive
Ottawa, Ontario, Canada K2M 1P6

Telephone (613) 254-9643
Facsimile (613) 254-5867
Website www.novatech-eng.com

LOCATION
CITY OF OTTAWA
150 LAURIER AVENUE WEST

DRAWING NAME
PRE-DEVELOPMENT
STORM DRAINAGE PLAN

PROJECT No.	122133
REV	REV # 2
DRAWING No.	122133-SWM1

PLAN #18833

M:\2023\122133\CAD\Civil\122133-SWM.dwg, SWM1_Jun 08, 2023, 1:52pm, cvesner

D07-12-22-0128