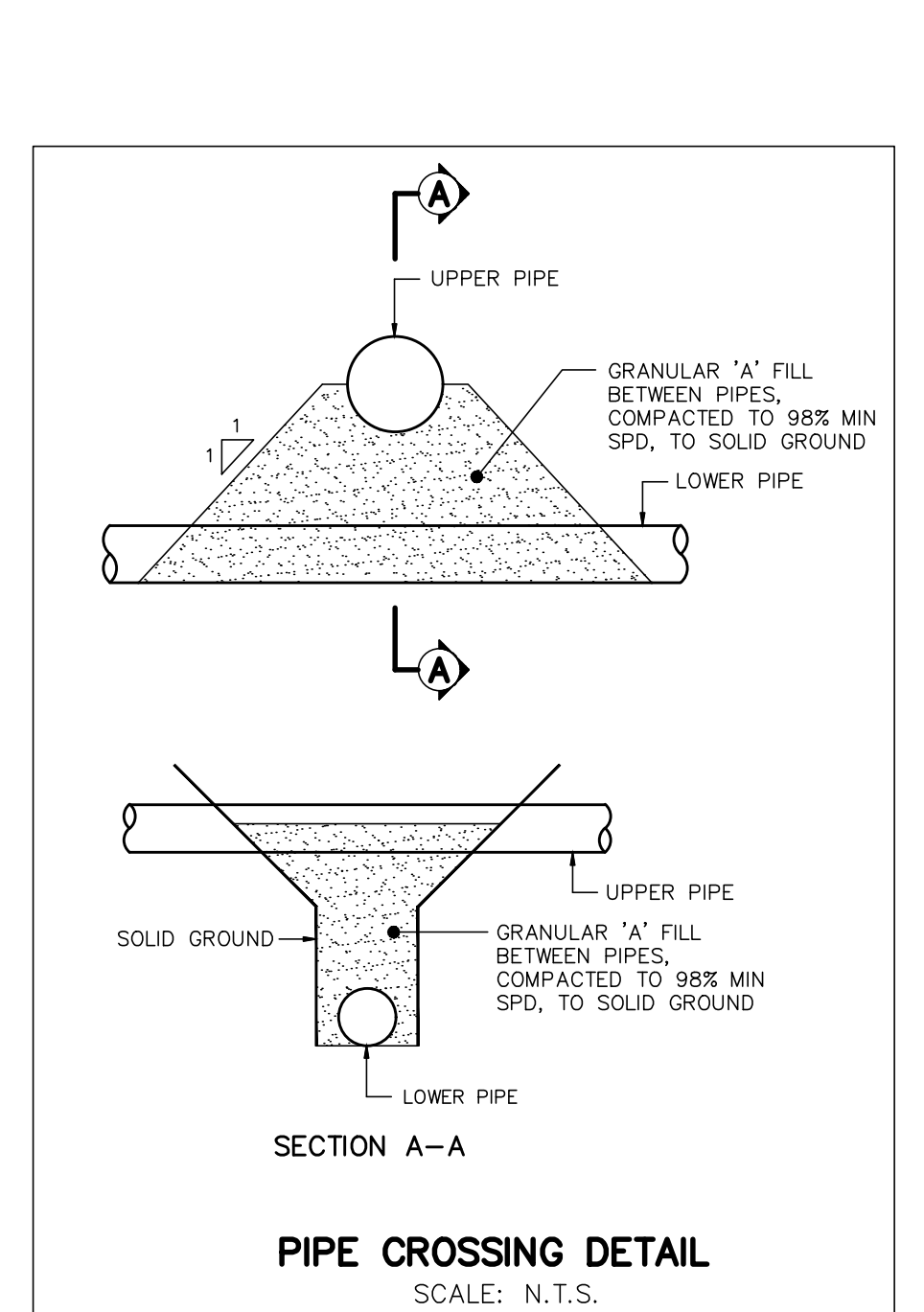
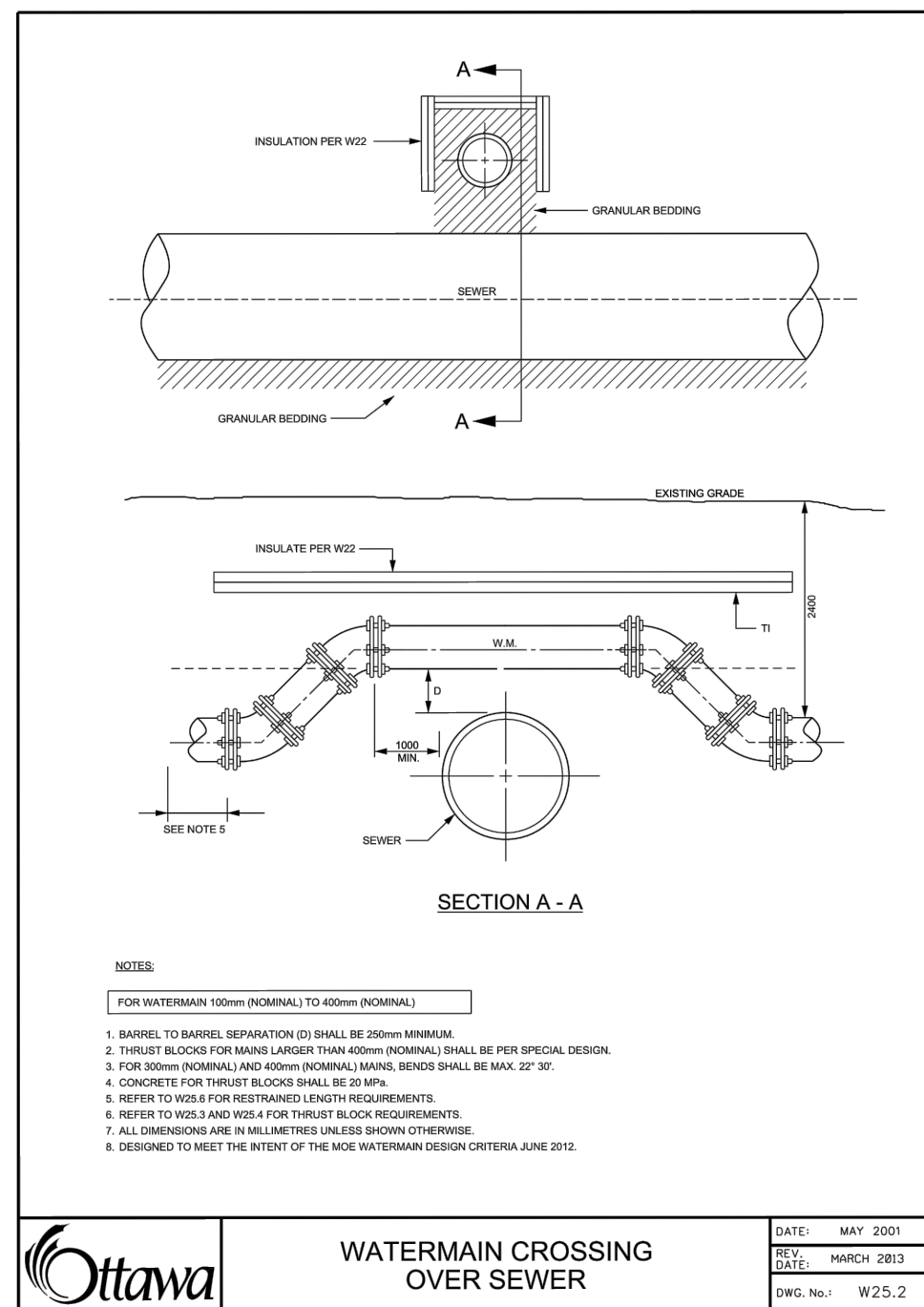


RE: PAVEMENT DESIGN
 FOR PAVEMENT STRUCTURAL DESIGN,
 REFER TO GEOTECHNICAL
 INVESTIGATION 3432 GREENBANK
 ROAD PREPARED BY PATERSON
 GROUP DATED AUGUST 27, 2021



STREET NAME	CATCH BASIN ID	OUTLET PIPE			TOP OF GRATE	GRATING COVER	INVERT		
		DIA. (mm)	TYPE	LENGTH (m)			INLET	OUTLET	
BLOCK A	CB 19	200	PVC	3.13	1.38	99.69	S19 PERFORATED	-	98.31
BLOCK A	CB 17	200	PVC	6.25	1.38	100.25	S19 PERFORATED	-	98.87
BLOCK A	CB 28	250	PVC	3.86	1.38	99.58	S19 PERFORATED	98.44	98.20
BLOCK A	CB 27	200	PVC	5.13	1.38	100.58	S19 PERFORATED	-	99.20
BLOCK B	CB 22	250	PVC	15.44	1.74	98.07	S19 PERFORATED	E. 96.56 W. 96.07	96.33
BLOCK B	DCB 23	200	PVC	2.13	1.38	96.64	S19 PERFORATED	-	95.26
BLOCK B	CB 24	200	PVC	0.75	1.38	99.39	S19 PERFORATED	-	98.01
BLOCK B	CB 25	250	PVC	9.78	1.38	95.69	S19 PERFORATED	94.44	94.31
BLOCK B	CB 26	250	PVC	9.21	1.38	99.73	S19 PERFORATED	98.50	98.35
BLOCK B	CB 30	200	PVC	13.35	1.38	99.61	S19 PERFORATED	98.57	98.23
BLOCK B	CB 31	200	PVC	10.28	1.38	99.64	S19 PERFORATED	-	98.26
BLOCK B	CB 21	200	PVC	2.67	1.38	94.81	S19 PERFORATED	-	93.43
BLOCK B	CB 32	200	PVC	2.81	1.38	95.35	S19 PERFORATED	-	93.97
FUT, CHAPMAN MILLS	DICB 1	300	PVC	2.31	1.38	94.53	S19 PERFORATED	-	93.15
GLENROY GILBERT DRIVE	CB 9	200	PVC	1.35	1.38	100.13	S19 PERFORATED	-	98.75
GLENROY GILBERT DRIVE	CB 10	200	PVC	5.25	1.38	100.08	S19 PERFORATED	-	98.70
GLENROY GILBERT DRIVE	CB 12	200	PVC	5.25	1.38	100.20	S19 PERFORATED	-	98.82
GLENROY GILBERT DRIVE	CB 13	200	PVC	1.26	1.38	99.98	S19 PERFORATED	-	98.60
GLENROY GILBERT DRIVE	CB 14	200	PVC	5.24	1.38	99.92	S19 PERFORATED	-	98.54
GLENROY GILBERT DRIVE	DCB 15	250	PVC	1.25	1.38	99.34	S19 PERFORATED	-	97.96
GLENROY GILBERT DRIVE	DCB 16	250	PVC	5.25	1.38	99.34	S19 PERFORATED	-	97.96
RIOCAN AVENUE	CB 3	200	PVC	0.87	1.38	99.25	S19 PERFORATED	-	97.87
RIOCAN AVENUE	CB 4	200	PVC	5.29	1.38	99.25	S19 PERFORATED	-	97.87
RIOCAN AVENUE	CB 5	200	PVC	1.31	1.38	99.59	S19 PERFORATED	-	98.21
RIOCAN AVENUE	CB 6	200	PVC	5.28	1.38	99.59	S19 PERFORATED	-	98.21
RIOCAN AVENUE	CB 7	200	PVC	2.72	1.38	100.91	S19 PERFORATED	-	99.53
RIOCAN AVENUE	CB 8	200	PVC	5.60	1.38	100.91	S19 PERFORATED	-	99.53
RIOCAN AVENUE	CB 29	200	PVC	9.08	1.38	99.14	S19 PERFORATED	-	97.76

STRUCTURE ID	ICD DIA. (mm)/ TYPE
CICB 3	83
CB 4	83
CB 5	83
CB 6	83
CB 7	83
CB 8	83
CB 9	83
CB 10	83
CB 12	83
CB 13	83
CB 14	83
DCB 15	94
DCB 16	108
STM108	Tempest LMF 80
STM105	Tempest LMF 70
STM101	Tempest LMF 95
STM115	130
STM126	90
STM124	Tempest LMF 80
STM134	210
STM164	Tempest LMF 105
STM159	75
STM149	225
DICB 1	285

CROSS NUMBER	DIAMETER TOP	DIAMETER BOTTOM	INVERT TOP	OBVERT BOTTOM	TYPE TOP	TYPE BOTTOM	CLEARANCE (m)
2	2000	2000	96.68	94.93	Watermain	SanitaryMain	1.75
3	2000	3750	96.68	95.72	Watermain	StormMain	0.96
4	500	2000	97.23	96.12	Watermain	SanitaryMain	1.11
5	2000	2000	97.27	95.38	Watermain	SanitaryMain	1.90
6	1000	2000	93.94	91.54	Watermain	SanitaryMain	2.40
7	2000	4500	93.78	93.53	Watermain	StormMain	0.25
8	2000	2000	93.50	93.05	Watermain	SanitaryMain	0.45
9	500	2000	93.02	91.71	Watermain	SanitaryMain	1.31
11	2000	3000	98.03	97.78	Watermain	StormMain	0.25
12	2000	2000	94.43	92.72	Watermain	SanitaryMain	1.71
13	2000	6750	94.46	94.00	Watermain	StormMain	0.36
14	1500	2000	94.47	93.98	Watermain	SanitaryMain	0.50
15	1500	2000	94.15	93.10	Watermain	SanitaryMain	1.05
16	1500	4500	94.17	93.92	Watermain	StormMain	0.25
17	1500	3750	96.23	95.36	Watermain	StormMain	0.87
18	2000	2500	92.27	91.28	Watermain	SanitaryMain	0.99
19	1500	2000	92.83	91.62	Watermain	SanitaryMain	1.21
20	2000	2500	92.30	91.38	Watermain	SanitaryMain	0.92
21	6750	2000	92.76	92.16	StormMain	Watermain	0.50
22	1500	2000	97.01	96.01	Watermain	SanitaryMain	1.00
23	1500	5250	97.18	96.93	Watermain	StormMain	0.25
24	1500	4500	98.00	97.66	Watermain	SanitaryMain	0.26
25	1500	2000	97.66	96.82	Watermain	SanitaryMain	0.84
26	1500	2000	97.71	97.15	Watermain	SanitaryMain	0.56
27	1500	2000	97.55	96.66	Watermain	SanitaryMain	0.89
28	1500	3000	97.55	97.27	Watermain	StormMain	0.28
29	1500	2000	97.62	96.91	Watermain	SanitaryMain	0.71
30	740	2000	97.90	97.21	Watermain	SanitaryMain	0.70
31	1520	3000	98.13	97.88	Watermain	StormMain	0.25
32	3000	2000	96.96	96.29	StormMain	SanitaryMain	0.67
33	3000	2000	97.57	97.22	StormMain	SanitaryMain	0.35
34	5250	2000	96.39	95.91	StormMain	SanitaryMain	0.39
35	7500	2500	92.65	91.35	StormMain	SanitaryMain	1.19
36	6750	2000	92.76	91.83	StormMain	SanitaryMain	0.83
37	7500	2000	93.21	92.68	StormMain	SanitaryMain	0.42
38	4500	2000	93.07	92.46	StormMain	SanitaryMain	0.53
39	6750	2000	93.33	92.90	StormMain	SanitaryMain	0.32
40	4500	2000	93.46	92.94	StormMain	SanitaryMain	0.52
41	6000	2000	94.65	94.17	StormMain	SanitaryMain	0.39
42	3750	2000	95.35	94.57	StormMain	SanitaryMain	0.78
43	3000	2000	96.11	94.79	StormMain	SanitaryMain	1.32
44	3000	2000	96.20	95.79	StormMain	SanitaryMain	0.41
45	6000	4500	94.49	93.91	StormMain	StormMain	0.58
46	3000	3750	96.10	95.65	StormMain	StormMain	0.45
47	7500	2000	92.67	92.42	StormMain	Watermain	0.25
48	2000	2000	94.69	94.02	Watermain	SanitaryMain	0.67
49	2000	6000	95.52	95.27	Watermain	StormMain	0.25
50	1500	2000	97.39	96.68	Watermain	SanitaryMain	0.71
51	1500	3000	97.02	96.55	Watermain	StormMain	0.47
52	1500	2000	97.02	95.90	Watermain	SanitaryMain	1.13

NOT FOR CONSTRUCTION

No.	BY	DATE	DESCRIPTION
3	S.L.M.	23-06-30	3RD SUBMISSION
2	S.L.M.	23-03-10	2ND SUBMISSION
1	S.L.M.	22-06-10	1ST SUBMISSION

TOPOGRAPHIC INFORMATION
 TOPOGRAPHIC INFORMATION PROVIDED BY STANTEC GEOMATICS LTD., PROJECT No. 161614291-111, DATED MARCH 1, 2022.

SITE PLAN INFORMATION
 SITE PLAN PROVIDED BY SRN ARCHITECTS LTD., PROJECT No. S21001, DATED JUNE 27, 2023

LEGAL INFORMATION
 CALCULATED DRAFT PLAN PROVIDED BY STANTEC GEOMATICS LTD., PROJECT No. 161614291-111, DATED MAY 9, 2022

BENCH MARK
 ELEVATIONS ARE REFERRED TO THE CANADIAN GEODETIC VERTICAL DATUM (CGVD-1928:1978) AND ARE DERIVED FROM BENCHMARK MONUMENT No. 196530071*, HAVING A PUBLISHED ELEVATION OF 99.742 METRES

MINTO COMMUNITIES INC. BARRHAVEN TOWN CENTRE
 GLENROY GILBERT DRIVE RIOCAN AVENUE & CHAPMAN MILLS DRIVE EXTENSION

DSEL LICENSED PROFESSIONAL ENGINEER
 S.L. MERRICK 100186523
 120 Iber Road Unit 103
 Slittsville, Ontario, K2S 1E9
 Tel. (613) 836-0856
 Fax. (613) 836-7183
 www.DSEL.ca

Ottawa 110 Laurier Ave W
 Ottawa, Ontario, K1P 1J1
 Tel. (613) 580-2400
 www.Ottawa.ca

© DSEL

CITY ROW DETAILS AND TABLE

DRAWN BY: AM	CHECKED BY: BC	PROJECT No. 15-816
DESIGNED BY: BC	CHECKED BY: SM	SHEET No. 3
SCALE: N.T.S.		

CITY PLAN No. 18822
 CITY FILE No. D07-12-22-0104