

Legend

- TREE IDENTIFICATION NUMBER
- EXISTING DECIDUOUS TREE
- EXISTING CONIFEROUS TREE
- EXISTING GROUPING OF VEGETATION TO REMAIN
- EXISTING GROUPING OF VEGETATION TO BE REMOVED
- EXISTING TREE TO BE REMOVED
- CRITICAL ROOT ZONE
- TREE PROTECTION FENCE
- PROPERTY LINE

Notes

- SITE PLAN PREPARED BY FIGURR DATED MARCH 23, 2021.
- TREE CONSERVATION REPORT PREPARED BY DENDRON FORESTRY SERVICES, JANUARY 24, 2021.
- TOPOGRAPHIC SURVEY PREPARED BY ANNIS, O'SULLIVAN, VOLLEBECK LTD, DATED JULY 2, 2022.

6	RE-ISSUED FOR CITY REVIEW	CA	KP	23.03.27
5	RE-ISSUED FOR CITY REVIEW	CA	KP	22.11.25
4	RE-ISSUED FOR CITY REVIEW	CA	KP	22.10.17
3	RE-ISSUED FOR CITY REVIEW	CA	KP	22.06.08
2	REVISED AS PER CITY COMMENTS	CTL	KP	22.03.08
1	ISSUED FOR REVIEW	CTL	ILL	21.06.18

Revision		By	Appd.	YY.MM.DD
File Name:	160401679-18	CTL	ILL	2021.05.13
		Dwn.	Chkd.	Dsgn.
				YY.MM.DD

Permit-Seal

Client/Project  
247393 ONTARIO INC

1951 CARLING AVENUE

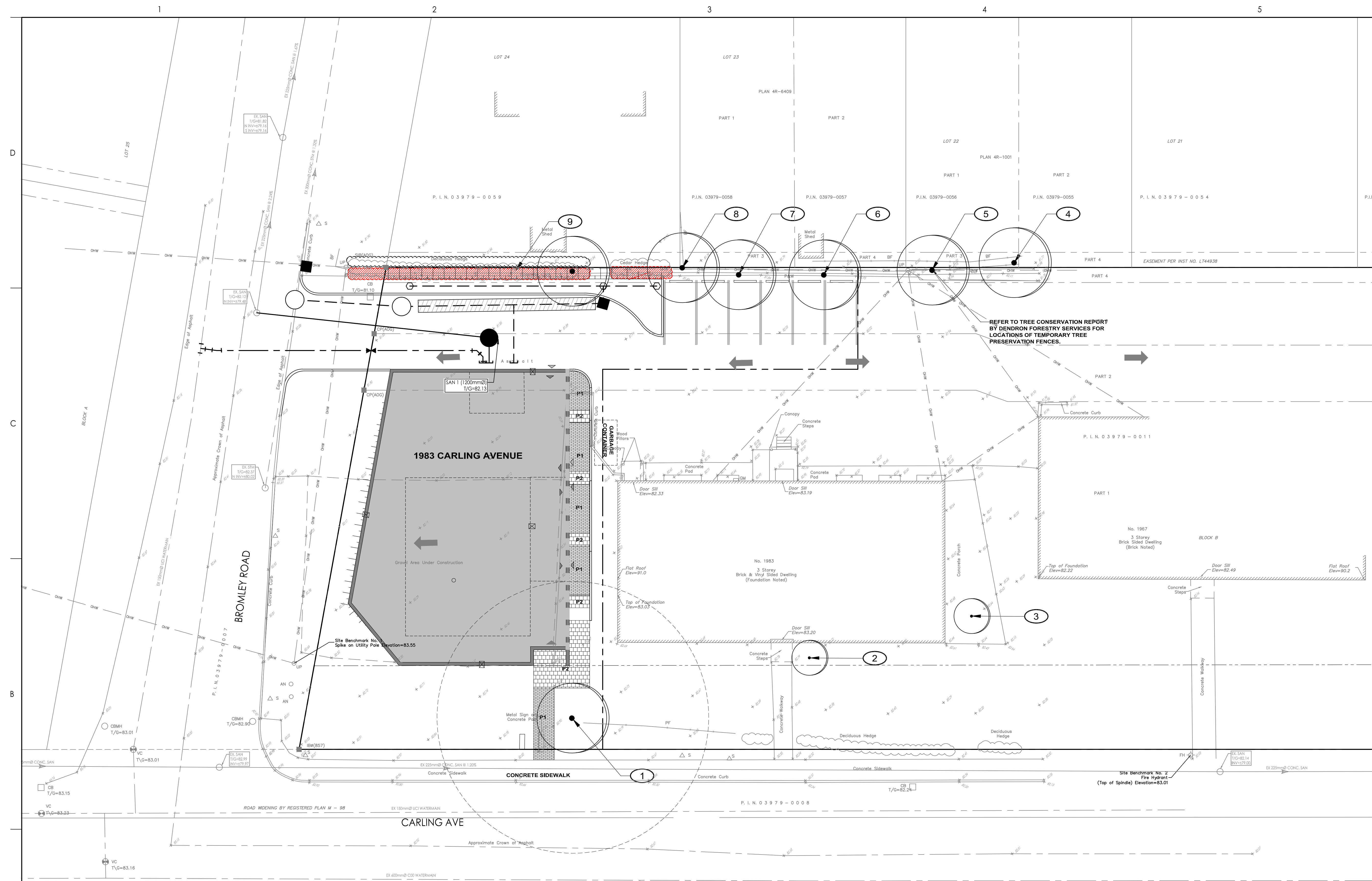
OTTAWA, ON

Title  
PROPOSED DEVELOPMENT AND  
TREE PRESERVATION PLAN

Project No. 160401679 Scale 1:150

Drawing No. Sheet Revision

L100 1 of 3 6



EXISTING VEGETATION SCHEDULE

TREE ASSESSMENT CONDUCTED BY OTHERS

PLANT ID	BOTANICAL NAME	COMMON NAME	DBH (cm)	OWNERSHIP	HEALTH/CONDITION	RECOMMENDATIONS	REASON FOR REMOVAL
1	Quercus macrocarpa	Bur Oak	111	Private	Fair	Large cavity at the base; soil damage on branches along Carling Avenue. TO BE RETAINED AND PROTECTED.	Construction of walkway.
2	Ginkgo biloba	Ginkgo	28	Private	Good	TO BE RETAINED	
3	Acer rubrum	Red Maple	38	Private	Good / Fair	TO BE RETAINED	
4	Ulmus pumila	Siberian Elm	40	Boundary	Fair	Hydro pruning; lean towards adjacent property. TO BE RETAINED.	
5	Acer negundo	Manitoba Maple	67	Boundary	Poor	Topped by hydro; epicormic shoots at base. TO BE RETAINED	
6	Acer negundo	Manitoba Maple	32	Private	Fair	Topped by hydro; epicormic shoots throughout. TO BE RETAINED	
7	Acer negundo	Manitoba Maple	21	Private	Fair / Poor	Topped by hydro; epicormic shoots throughout. TO BE RETAINED	
8	Ulmus pumila	Siberian Elm	35, 38	Boundary	Fair / Poor	Hydro pruned; TO BE RETAINED	
9	Ulmus pumila	Siberian Elm	N/A	Boundary	Fair / Poor	Hydro pruned; TO BE REMOVED.	Construction of roadway, grading operations.

1 TREE PRESERVATION PLAN  
1:150

W:\active\160401679\design\drawings\160401679\_18.dwg  
2023/05/27 8:40 AM By: ACSS, Charaf  
08/28/2023 8:40 AM By: ACSS, Charaf