

Legend

- G1A** SANITARY DRAINAGE AREA ID#
- 0.38 INF** INFILTRATION RATES
- SANITARY DRAINAGE AREA ha.
- SANITARY DRAINAGE AREA
- PROPOSED SANITARY SEWER
- EXISTING SANITARY SEWER

SANITARY STATS

POPULATION COUNT - PHASE 2 & 3

286 - 1 BEDROOM APTS @ 1.4PPU = 400 PEOPLE
58 - 2 BEDROOM APTS @ 2.1PPU = 122 PEOPLE
TOTAL POPULATION = 522

COMMERCIAL AREA
TOTAL COMMERCIAL SPACE = 950.85m² [0.095ha] @ 28,000 L/ha/day

9	REVISED AS PER CITY COMMENTS	MJS	DT	23.06.30
8	REVISED WATER SERVING	MJS	DT	23.03.10
7	REVISED ADS SYSTEM	MJS	DT	23.02.13
6	ISSUED FOR SPA AMENDMENT	MJS	DT	22.12.22
5	REVISED AS PER CITY COMMENTS	MJS	DT	22.07.14
4	REVISED AS PER CITY COMMENTS	MJS	DT	22.03.29
3	REVISED AS PER CITY COMMENTS	MJS	TR	21.09.02
2	ISSUED FOR GEOTECH REVIEW	MJS	DT	21.08.03
1	ISSUED TO CITY FOR SPA	MJS	DT	20.05.22

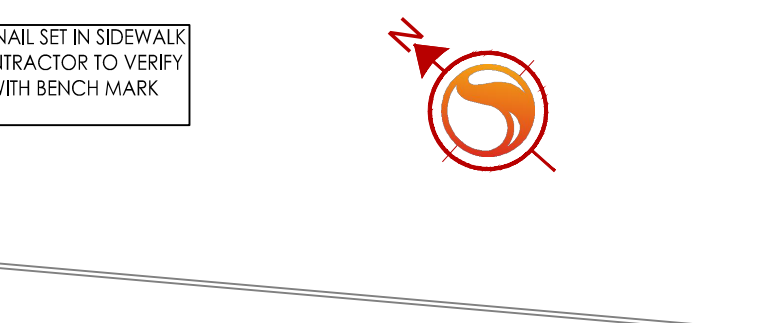
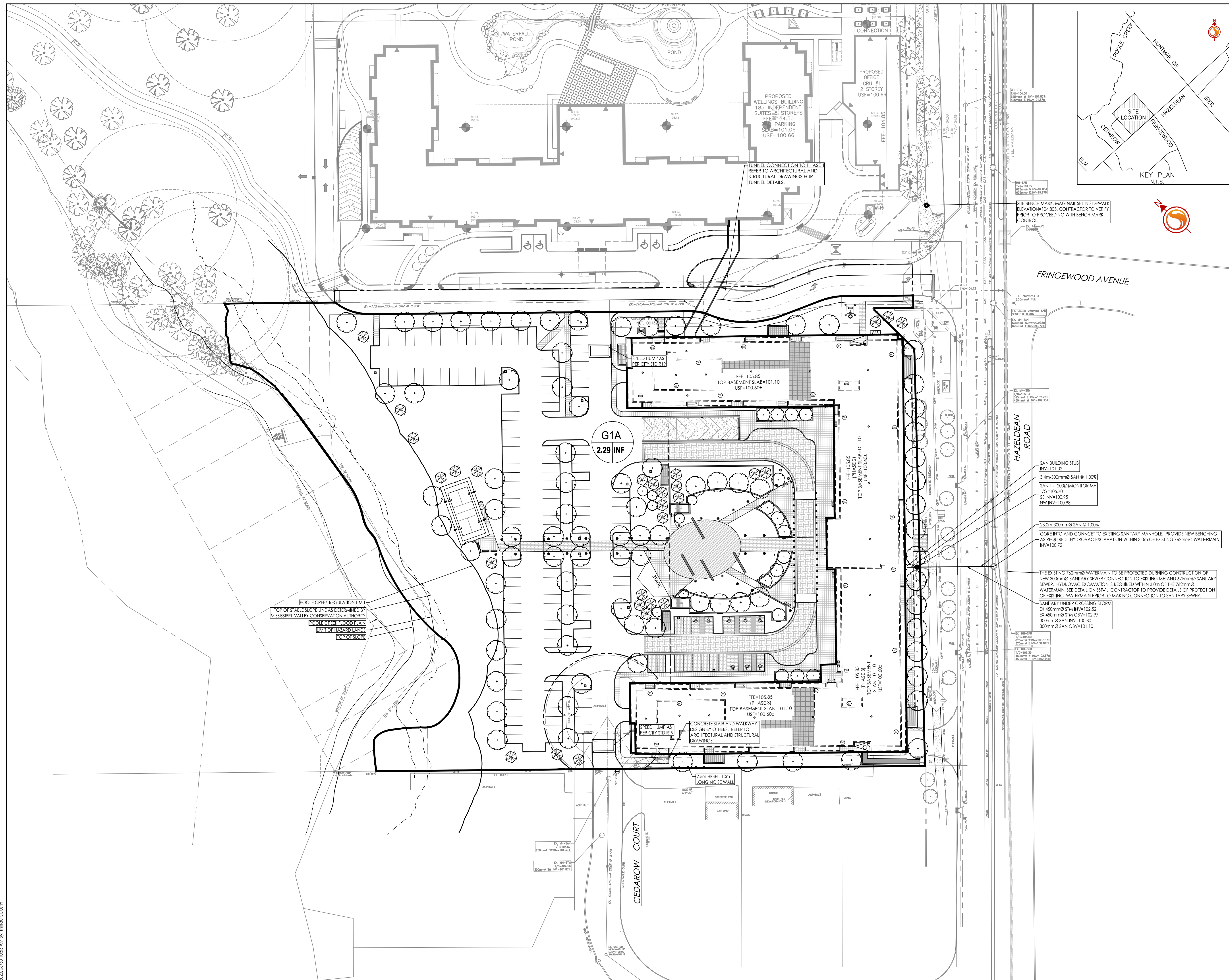
Revision		By	Appd.	YY.MM.DD	
File Name:	160401511-08	MJS	DT	MJS	19.09.05
		Dwn.	Chkd.	Dgn.	YY.MM.DD

Permit-Seal

Client/Project
NAUTICAL LANDS GROUP
2962 Carp Road
WELLINGS OF STITTSVILLE PH 2
20 CEDAROW COURT
OTTAWA, ON

Title
SANITARY DRAINAGE PLAN

Project No. 160401511
Drawing No. SA-1
Scale 1:500
Sheet 7 of 7
Revision 9
PLN No. 18190



POOL CREEK REGULATION LIFT
TOP OF STABLE SLOPE LINE AS DETERMINED BY MISSISSIPPI VALLEY CONSERVATION AUTHORITY
POOL CREEK FLOOD PLAN
LIMIT OF HAZARD LANDS
TOP OF SLOPE