

Copyright Reserved

The Contractor shall verify and be responsible for all dimensions. DO NOT scale the drawing - any errors or omissions shall be reported to Stantec without delay.
The Copyrights to all designs and drawings are the property of Stantec. Reproduction or use for any purpose other than that authorized by Stantec is forbidden.

Legend

- EXISTING DECIDUOUS TREE TO REMAIN
- PROPOSED DECIDUOUS TREE
- PROPOSED DECIDUOUS SHRUBS
- PROPOSED CONIFEROUS SHRUBS
- EXISTING GROUPING OF VEGETATION TO REMAIN
- PROPOSED PERENNIALS AND GRASSES
- CRITICAL ROOT ZONE (CRZ)
- PROPOSED PLANTING BED
- SOD WITH 150mm TOPSOIL
- PROPOSED UNIT PAVERS TYPE 1. REFER TO DETAIL 5/L300.
- PROPOSED UNIT PAVERS TYPE 2. REFER TO DETAIL 5/L300.
- PROPERTY LINE

Notes

- SITE PLAN PREPARED BY FIGURR DATED MARCH, 2022.
- PLEASE REFER TO TREE CONSERVATION REPORT PREPARED BY DENDRON FORESTRY SERVICES, JANUARY 24, 2021, FOR INFORMATION RELATED TO THE PRESERVATION AND REMOVAL OF EXISTING TREES.
- TOPOGRAPHIC SURVEY PREPARED BY ANNIS, O'SULLIVAN, VOLLEBECK LTD, DATED JULY 2, 2022.

6	RE-ISSUED FOR CITY REVIEW	CA	KP	23.03.27
5	RE-ISSUED FOR CITY REVIEW	CA	KP	22.11.25
4	RE-ISSUED FOR CITY REVIEW	CA	KP	22.10.17
3	RE-ISSUED FOR CITY REVIEW	CA	KP	22.06.08
2	REVISED AS PER CITY COMMENTS	CTL	KP	22.03.08
1	ISSUED FOR REVIEW	CTL	ILL	21.06.18

Revision		By	Appd.	YY.MM.DD
File Name:	160401679-L8	CTL	ILL	2021.05.13
		Dwn.	Chkd.	Dsgn.
				YY.MM.DD

Permit-Seal

Client/Project

247393 ONTARIO INC

1951 CARLING AVENUE

OTTAWA, ON

Title

LANDSCAPE PLAN

Project No. 160401679 Scale 1:150

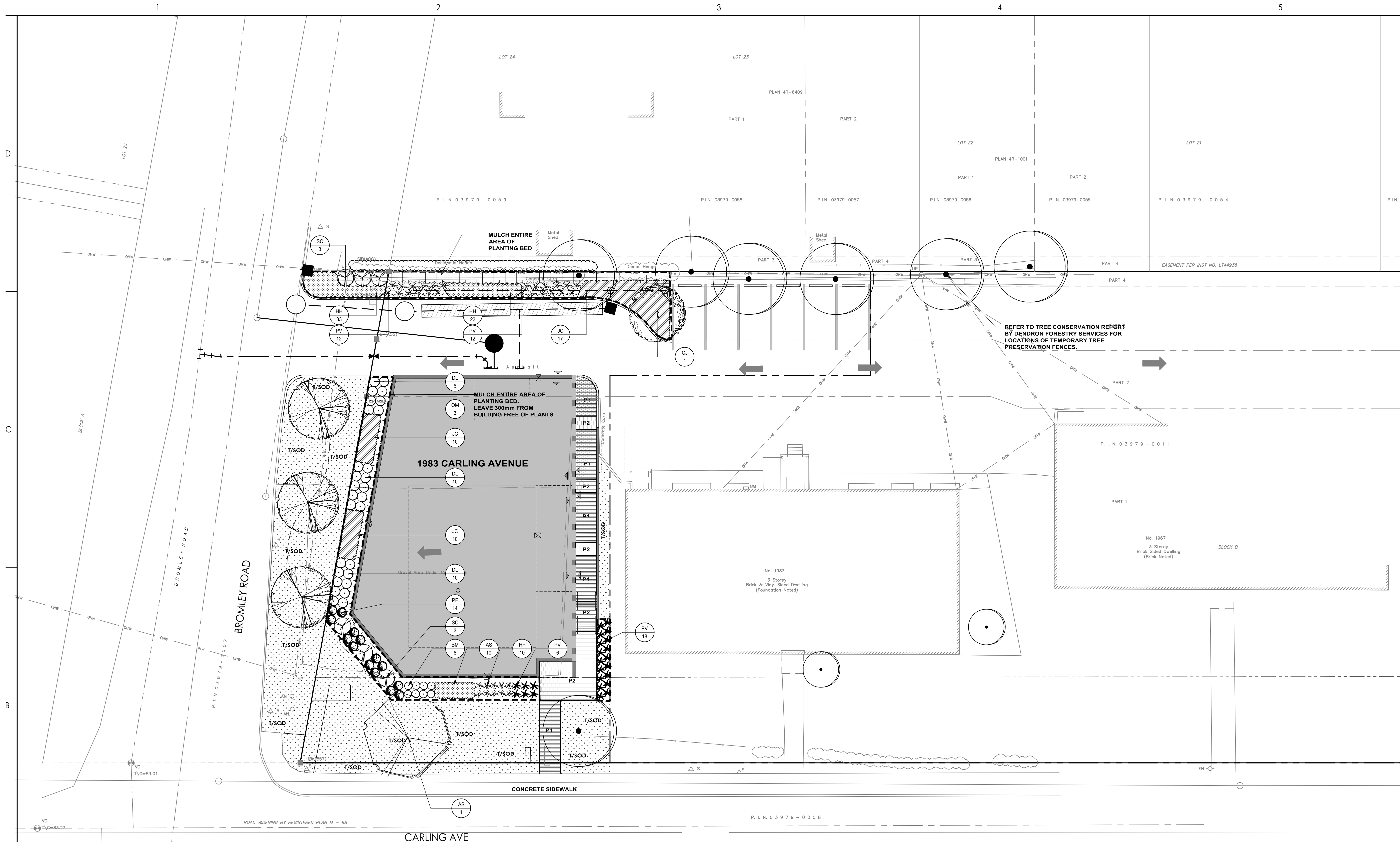
Drawing No. Sheet Revision

L101

2 of 3

6

PLAN # 18587



1 LANDSCAPE PLAN
1:150

PLANT LIST

QTY	KEY	BOTANICAL NAME	COMMON NAME	SIZE	REMARKS
DECIDUOUS TREES - REFER TO DETAIL 2/L200					
1	AS	<i>Acer saccharum</i>	Sugar Maple	70 mm (cal)	W.B.
1	CJ	<i>Cercidiphyllum japonicum</i>	Katsura Tree	70 mm (cal)	W.B.; Plant at 7.5 m o/c
3	QM	<i>Quercus macrocarpa</i>	Urban Pinnacle Oak	70 mm (cal)	W.B.; Plant at 7.5 m o/c
DECIDUOUS SHRUBS - REFER TO DETAIL 4/L200					
28	DL	<i>Dierilla lonicera</i>	Bush Honeysuckle	500 mm (ht.)	C.G.; Plant at 7500 mm o/c
14	PF	<i>Potentilla fruticosa</i>	Abbotswood Cinquefoil	500 mm (ht.)	C.G.; Plant at 750 mm o/c
6	SC	<i>Sambucus canadensis</i>	Lemony Lace Elderberry	500 mm (ht.)	C.G.; Plant at 1300 mm o/c
BROADLEAVED EVERGREEN SHRUBS - REFER TO DETAIL 4/L200					
8	BM	<i>Buxus microphylla</i>	Faulkner Boxwood	400 mm (ht.)	Potted; Plant at 600 mm o/c
CONIFEROUS SHRUBS - REFER TO DETAIL 4/L200					
37	JC	<i>Juniperus communis</i> var. <i>depressa</i>	Canadian Golden Juniper	500 mm (sp.)	Potted; Plant at 750 mm o/c
PERENNIALS / ORNAMENTAL GRASSES - REFER TO DETAIL 3/L200					
10	AS	<i>Astilbe arendsii</i>	Cattleya False Spirea	1 Gallon	Potted; Plant at 600 mm o/c
56	HH	<i>Helipopsis helianthoides</i>	Tuscan Sun Flower	1 Gallon	Potted; Plant at 500 mm o/c
10	HF	<i>Heuchera x Frosted Violet</i>	Frosted Violet Coral Bells	1 Gallon	Potted; Plant at 600 mm o/c
48	PV	<i>Panicum virgatum</i>	Prairie Winds Cheyenne Sky	1 Gallon	Potted; Plant at 700 mm o/c