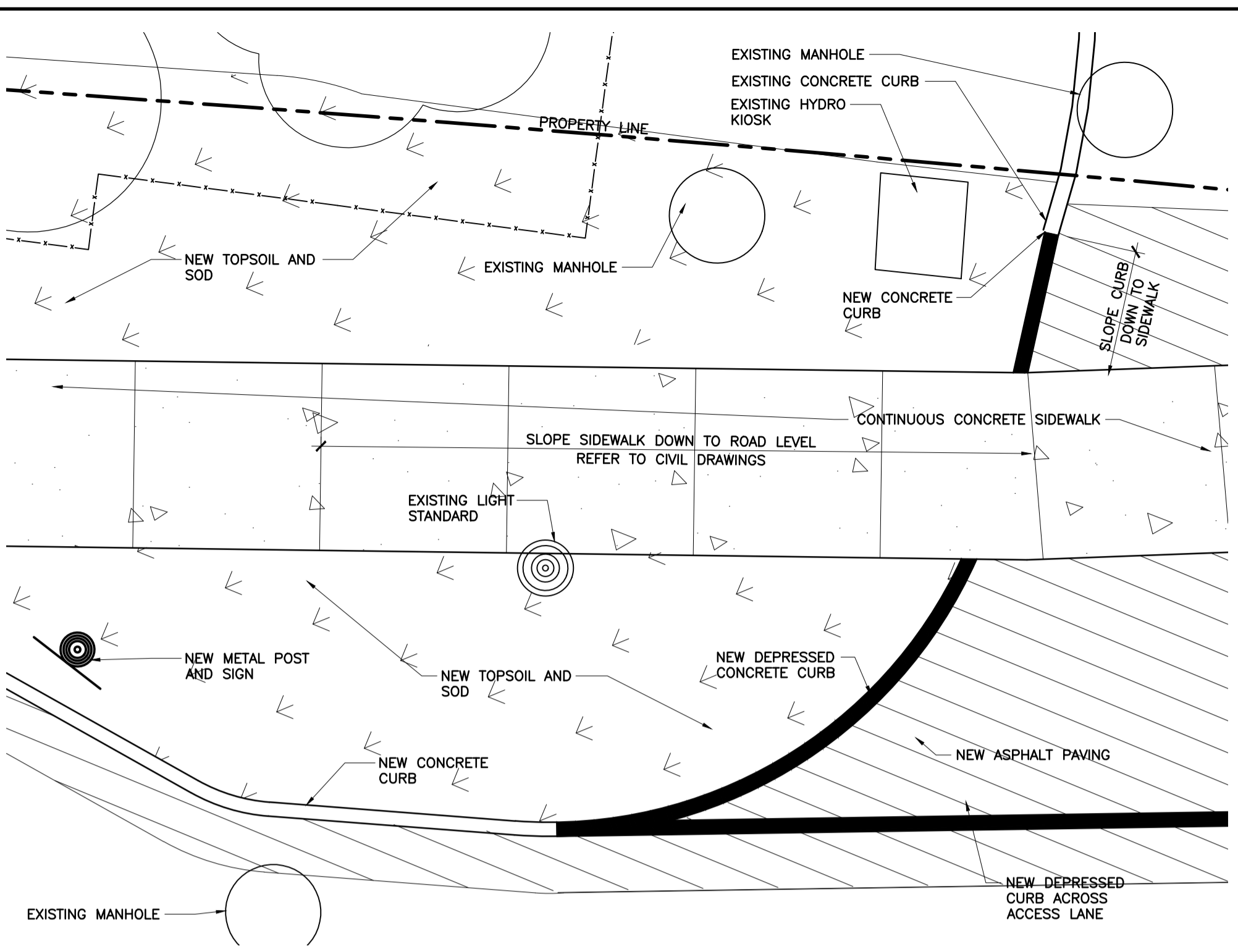
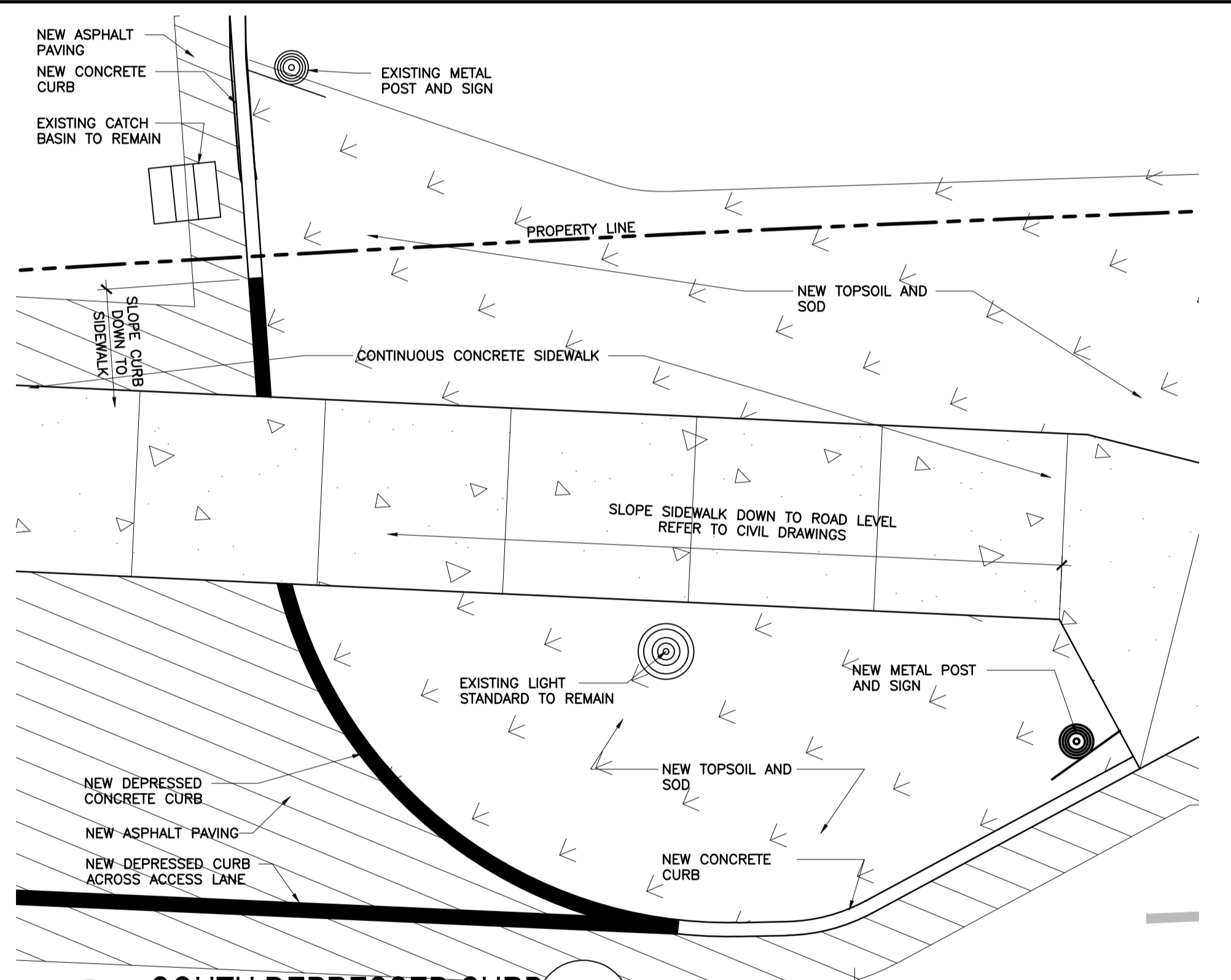


**1 NEW PLAN**  
A2 1:200



**3 NORTH DEPRESSED CURB**  
A2 1:50



**2 SOUTH DEPRESSED CURB**  
A2 1:50

**GENERAL NOTES**

- ALL WORK ON CITY OF OTTAWA PROPERTY SHALL COMPLY WITH CITY OF OTTAWA STANDARDS
- ALSO REFER TO CIVIL DRAWINGS FOR ADDITIONAL INFORMATION AND REQUIREMENTS
- EXISTING TREES TO BE PROTECTED FROM DAMAGE FOR DURATION OF WORK

**DRAWING LEGEND**

- NEW ASPHALT PAVING
- NEW CONCRETE SIDEWALK WITH SAWCUTS
- NEW TOPSOIL AND SOD
- PROPERTY LINE
- CENTRELINE OF ROAD
- NEW METAL POST AND 'NO PARKING, DROP OFF ONLY' SIGN
- DEPRESSED CURB
- TREE PROTECTION FENCING AROUND CRITICAL ROOT ZONE PER CITY OF OTTAWA STANDARD. SEE DETAIL ON A1

**DRAWING NOTES**

- NEW MONOLITHIC CONCRETE CURB AND SIDEWALK
- NEW CONCRETE CURB
- NEW ASPHALT PAVING
- NEW CONTINUOUS CONCRETE SIDEWALK. REINSTATE ASPHALT ON EITHER SIDE AS REQUIRED WHERE SIDEWALK CROSSES EXISTING LANES
- NEW TOP SOIL AND SOD MIN. 1200MM WIDE
- NEW METAL POST AND 'NO PARKING' SIGN
- SLOPE CURB DOWN TO SIDEWALK
- LINE OF PREVIOUS EXISTING CURB
- EXISTING CONCRETE CURB TO REMAIN
- NEW LINE PAINTING
- TREE PROTECTION FENCING AS PER CITY OF OTTAWA STANDARD. SEE DETAIL ON A1
- DEPRESSED CURB PER CITY OF OTTAWA STANDARD SC7.1. ALSO REFER TO CIVIL
- EXISTING YELLOW PAINTED CENTRELINE TO BE REPAINTED AS REQUIRED TO ENSURE 3.5m WIDE TRAVEL LANE IS PROVIDED IN EACH DIRECTION



4	0	23/06/14	RE-ISSUED FOR SITE PLAN CONTROL
3	0	23/05/04	RE-ISSUED FOR SITE PLAN CONTROL
2	0	23/03/28	RE-ISSUED FOR SITE PLAN CONTROL
1	0	22/12/02	ISSUED FOR SITE PLAN CONTROL

LES IDÉES, CONCEPTS, DISPOSITIONS ET PLANS MONTRÉS OU REPRÉSENTÉS PAR CE DESSIN APPARTIENNENT À EDWARD J. CUHACI AND ASSOCIATES ARCHITECTS INC. ET ONT ÉTÉ CRÉÉS, ET DÉVELOPPÉS POUR ÊTRE UTILISÉS DANS LE CADRE DU PRÉSENT PROJET. ILS NE DOIVENT PAS ÊTRE UTILISÉS À D'AUTRES FINS NI COMMUNIQUÉS À QUI QUE CE SOIT SANS LA PERMISSION ÉCRITE DE EDWARD J. CUHACI AND ASSOCIATES ARCHITECTS INC.

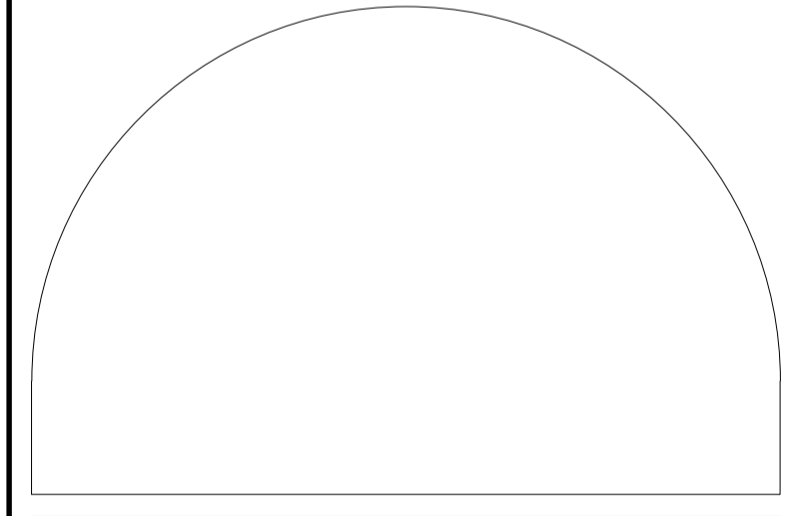
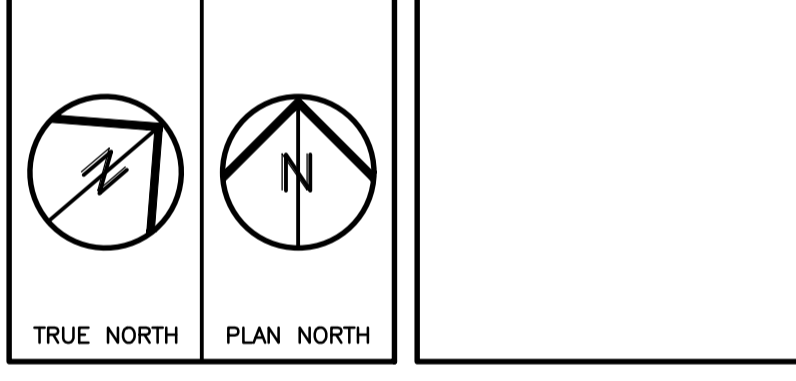
L'ARCHITECTE DÉCLINE TOUTE RESPONSABILITÉ DÉCOULANT DE PROBLÈMES FAISANT SUITE AU NON RESPECT DES PLANS ET DEVIS OU DE L'INTENTION DU CONCEPT QU'ILS TRANSMETTENT, OU DE TOUTS PROBLÈMES POUVANT RÉSULTER DU DÉFAUT DE TIERS D'OBTENIR OU DE SUIVRE LES INSTRUCTIONS DE L'ARCHITECTE RELATIVEMENT AUX ERREURS, OMISSIONS, INCOHÉRENCES, AMBIGUITÉS OU CONTRADICTIONS ALLÉGUÉES.

L'ENTREPRENEUR DOIT VÉRIFIER TOUTES LES DIMENSIONS SUR PLACE ET INFORMER L'ARCHITECTE DE TOUT ÉCART AVANT LE DÉBUT DES TRAVAUX. NE PAS MESURER LES DESSINS À L'ÉCHELLE.

ALL IDEAS, DESIGNS, ARRANGEMENTS, AND PLANS INDICATED OR REPRESENTED BY THIS DRAWING ARE OWNED BY AND THE PROPERTY OF EDWARD J. CUHACI AND ASSOCIATES INC. AND WERE CREATED, EVOLVED, AND DEVELOPED FOR USE ON AND IN CONNECTION WITH THE SPECIFIED PROJECT. NONE OF THE IDEAS, DESIGNS, ARRANGEMENTS OR PLANS SHALL BE USED BY OR DISCLOSED TO ANY PERSON, FIRM, OR CORPORATION FOR ANY PURPOSE WHATSOEVER WITHOUT THE WRITTEN PERMISSION OF EDWARD J. CUHACI AND ASSOCIATES INC.

THE ARCHITECT WAIVES ANY AND ALL RESPONSIBILITY AND LIABILITY FOR PROBLEMS WHICH ARISE FROM FAILURE TO FOLLOW THESE PLANS, SPECIFICATIONS, AND THE DESIGN INTENT THEY CONVEY, OR FOR PROBLEMS WHICH ARISE FROM OTHERS' FAILURE TO OBTAIN AND/OR FOLLOW THE ARCHITECT'S GUIDANCE WITH RESPECT TO ANY ERRORS, OMISSIONS, INCONSISTENCIES, AMBIGUITIES OR CONFLICTS WHICH ARE ALLEGED.

CONTRACTOR TO VERIFY ALL DIMENSIONS AND NOTIFY THE ARCHITECT OF ANY DISCREPANCIES BEFORE WORK COMMENCES. DO NOT SCALE DRAWINGS



**EDWARD J CUHACI & ASSOCIATES ARCHITECTS Inc.**  
171 Slater St, Suite 100, Ottawa, Ontario, K1P 5H7  
Fax: (613) 236-1944 Telephone: (613) 236-7135 E-mail: info@cuhaci.com

PROJECT/TITRE DU PROJET  
**STITTSVILLE PUBLIC SCHOOL DROP OFF LANE**  
40 GRANITE RIDGE DRIVE  
STITTSVILLE, ON

OTTAWA-CARLETON DISTRICT SCHOOL BOARD  
133 GREENBANK ROAD  
NEPEAN, ON

**NEW PLAN AND DETAILS**

SCALE ÉCHELLE	AS SHOWN	PROJ. No 2233	ISSUE No 4	REV. No 0
DRAWN BY DESSINE PAR	SL	DRAWING/DESSIN		
CHECKED BY VÉRIFIÉ PAR	XF	<b>A2</b>		
DATE	MAY 2023			