

Montreal, 8 mai 2023

BÂTIMO DÉVELOPPEMENT INC.
 6485 rue Doris-Lussier, Bureau 400
 Boisbriand (QC) J7H 0E8
 Tél : (450) 419-4905

Send by mail: mdubuc@emd-batimo.ca

Subject:

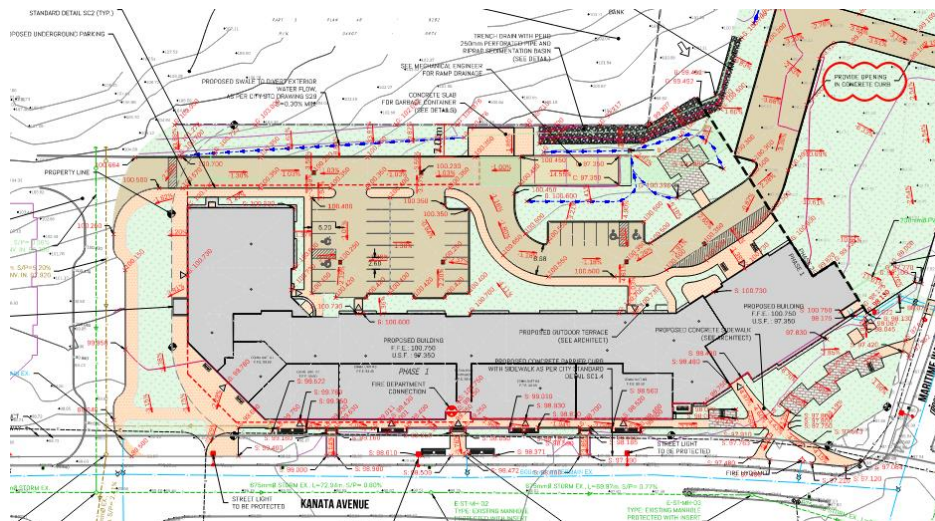
Excavation requirement for the Lib Kanata in Ottawa - Phase 1

Reference: L2C01220241

Madam, Sir,

According to the architectural layout, phase 1 of the project is planned to a one-story underground parking garage. The geotechnical borehole demonstrates that we reach the bedrock level at an average depth of 1.5 to 2 meters from the actual ground. Over the bedrock, we have a mix of glacial till and sand.

The geotechnical engineer recommends sloping the natural subgrade soils 1:1 and the rock 1:10. From this requirement, we deduct an additional excavation of 3 metres around phase 1 should be done without shoring.



Jean-René Larose, Ing., P.eng, LEED

Principal Associate – Structural Engineer

PEO#100213414

irlarose@L2Cexperts.com