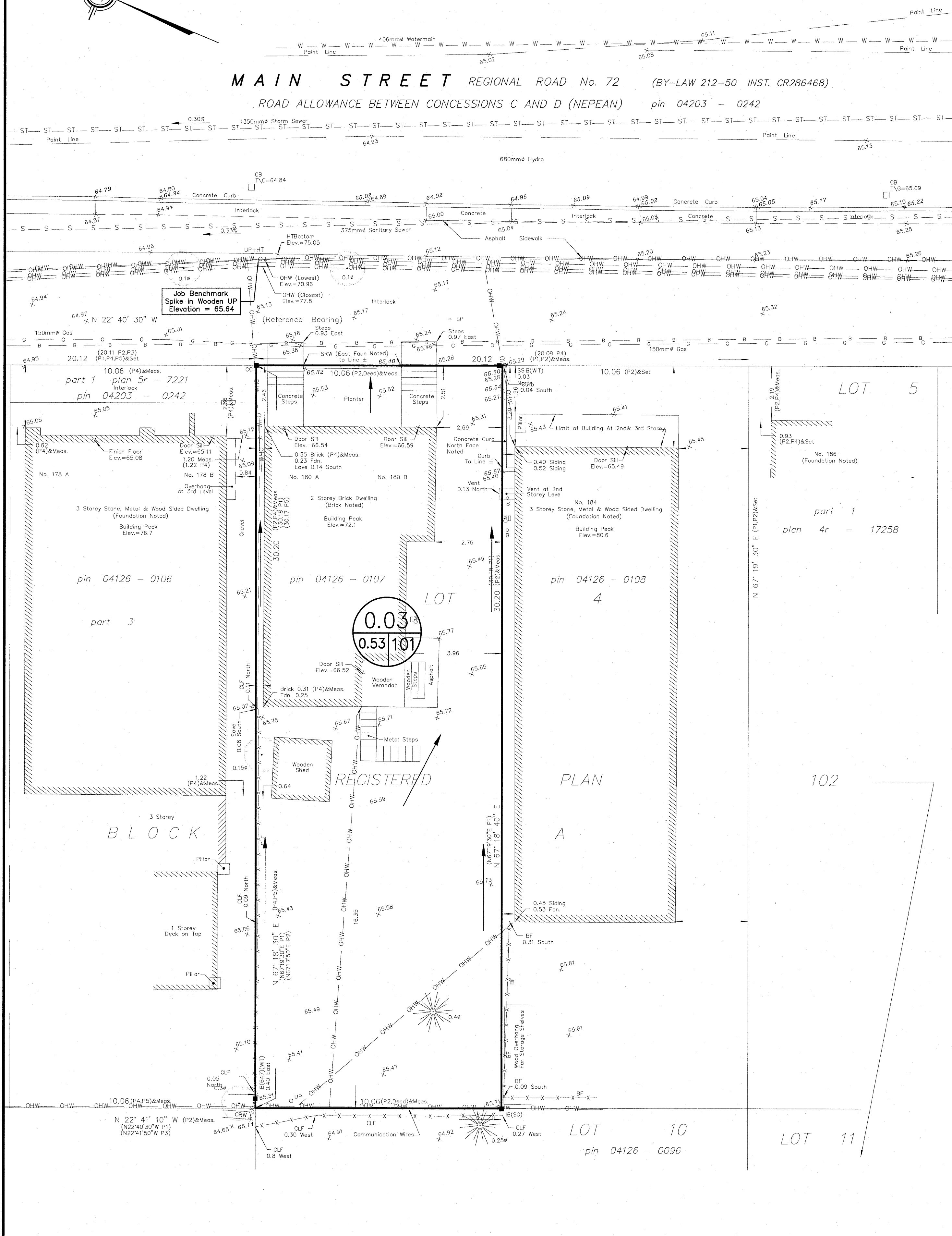
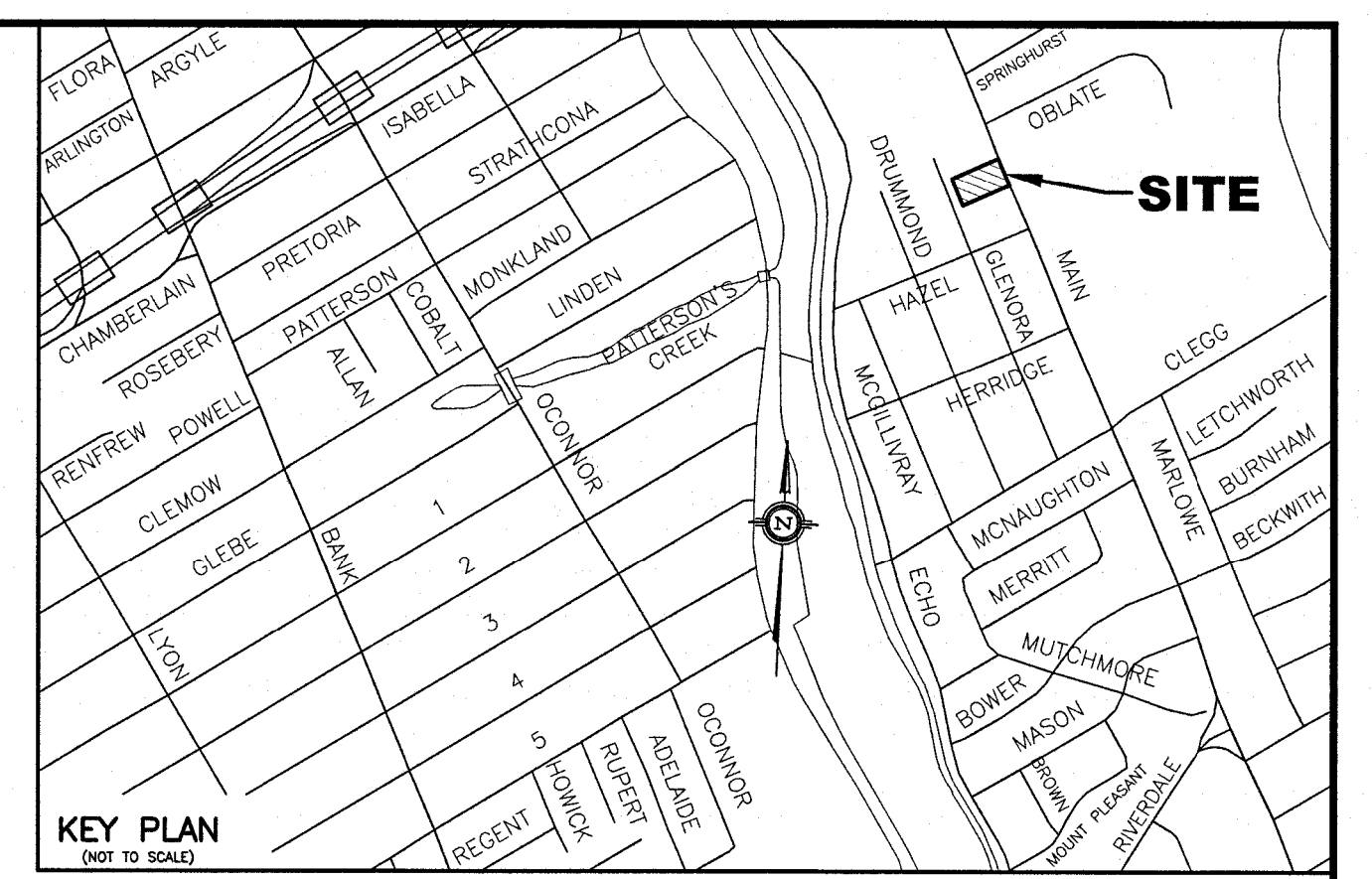
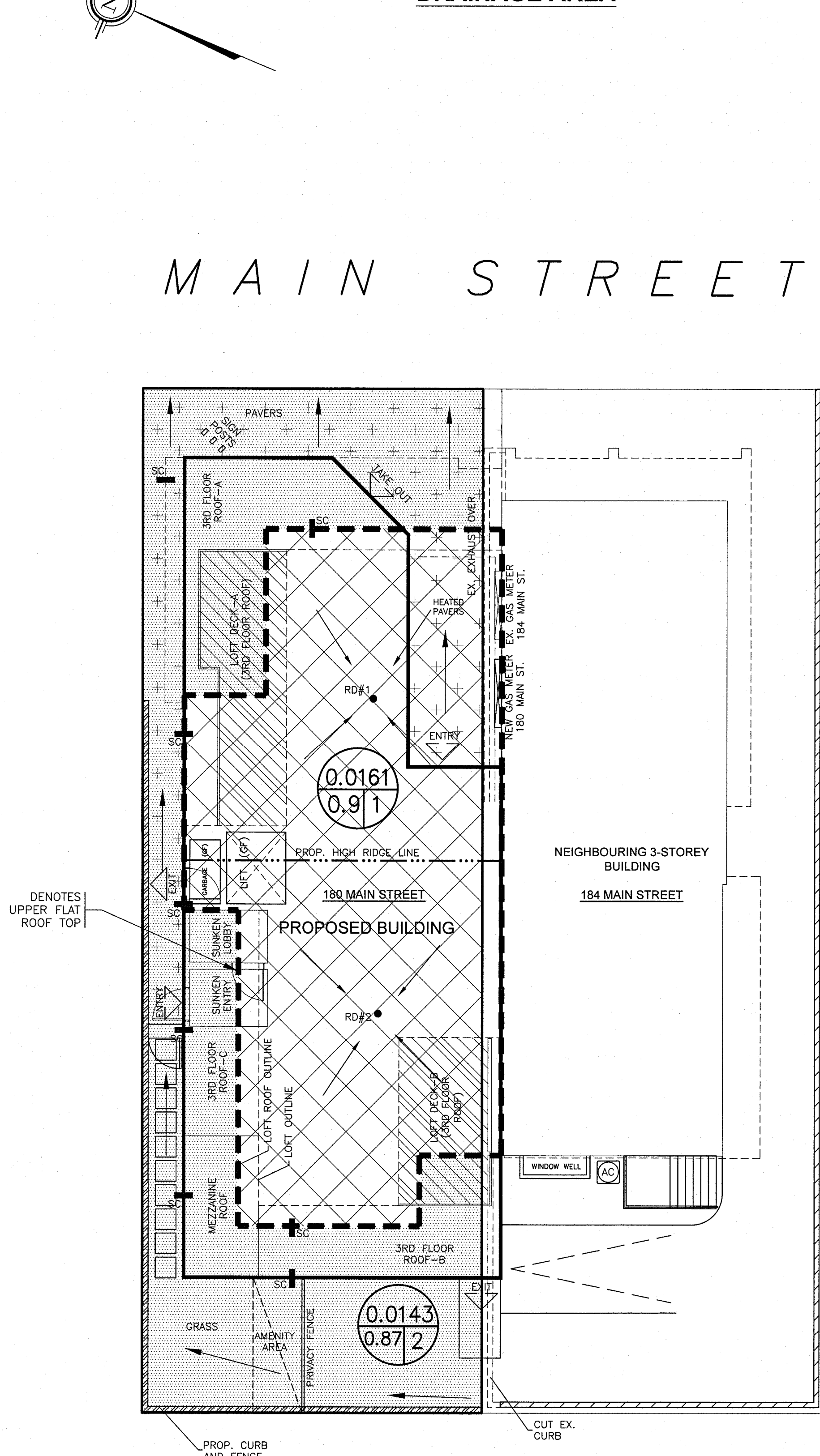


PRE - DEVELOPMENT STORM DRAINAGE AREA



POST DEVELOPMENT STORM DRAINAGE AREA

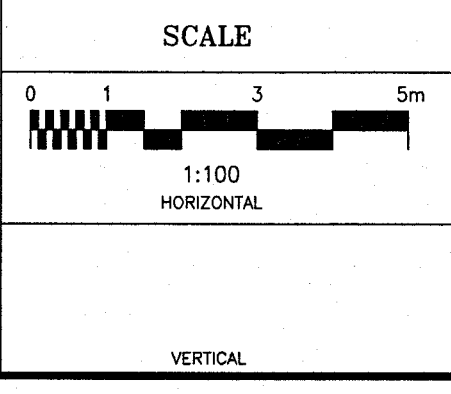
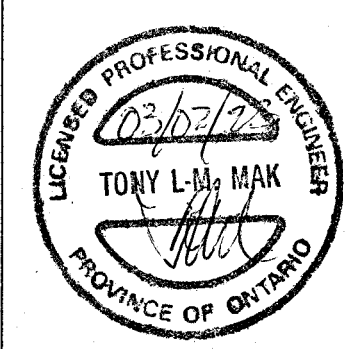


- LEGEND**
- RD#1 PROPOSED ROOF DRAIN NUMBER AND LOCATION
 - SC PROPOSED ROOF SCUPPER LOCATION
 - — — PROPOSED HIGH RIDGE LINE
 - 0.03 DRAINAGE AREA IN HECTARES
 - 0.91 DRAINAGE NODE NUMBER
 - COEFFICIENT OF RUNOFF
 - UN-CONTROLLED DRAINAGE AREA
 - CONTROLLED DRAINAGE AREA
- NOTES**
- NODE #1 REPRESENTS BUILDING ROOF AREA (SWM CONTROLLED AREA)
 - NODE #2 REPRESENTS UNCONTROLLED DRAINAGE AREA
 - NODE #101 REPRESENTS PRE-DEVELOPMENT DATA.


ADRIAN VAN WYK
 PLANNER I
 PLANNING, REAL ESTATE & ECONOMIC
 DEVELOPMENT DEPARTMENT, CITY OF OTTAWA

APPROVED
 By Adrian van Wyk at 12:51 pm, Jun 23, 2023


NO.	REVISION	DATE	BY
2	REVISIONS AS PER ARCHITECT'S REVISED SITE PLAN OF FEB. 23, 2023 AND CITY'S REVIEW COMMENTS OF JAN. 13, 2023	03/01/23	TLM
1	ISSUED FOR SITE PLAN APPLICATION	10/14/22	TLM



DESIGN	T.L.M.
CHECKED	T.L.M.
DRAWN BY	P.M.
CHECKED	T.L.M.
APPROVED	T.L.M.

PROJECT
180 MAIN STREET
 PART OF LOT 4 IN BLOCK A
 REGISTERED PLAN 102
 CITY OF OTTAWA

DRAWING TITLE
STORM DRAINAGE AREA PLAN

 T.L. MAK ENGINEERING CONSULTANTS LTD. CONSULTING ENGINEERS		PROJECT No.	DATE	DRAWING No.
		822-100	AUGUST 2022	D-1