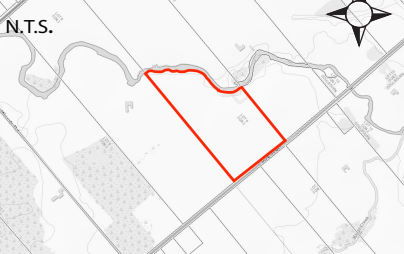


Jabulani Site Plan Sketch

8005 Jock Trail
 Lot 9, Concession 3
 Geographic Township of Goulbourn
 CITY OF OTTAWA

Key Map



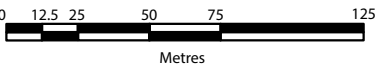
Legend

- Subject Lands
- Vineyard Fields
- Watercourse
- RVCA Regulation Limit
- Existing Vegetation
- Existing Vegetation around parking area
- Fire Route

Zoning Table AG3[923r]

Provision	Required	Approved
Min. Lot Area	100,000m ²	153,262m ²
Min. Lot Frontage	60m	305.6m
Min. Front Yard	10m	71.9m
Min. Ext. Side Yard	10m	n/a
Min. Side Yard	5m	122.1m
Min. Rear Yard	10m	43.5m
Max Building Height	12m	<=12m
Max. Lot Coverage	20%	39%
# of Parking Spaces Place of Assembly (1/100m ²) Agricultural use (2+3/100m ²)	1362/100 = 13.62 2+ 3*2.9 (77+214 = 10.7) Total :24.3	35
Location of Parking from Front PL [923r]	5m	5.3m
Place of Assembly Max. Floor Area [923r]	390m ²	385.7m ²

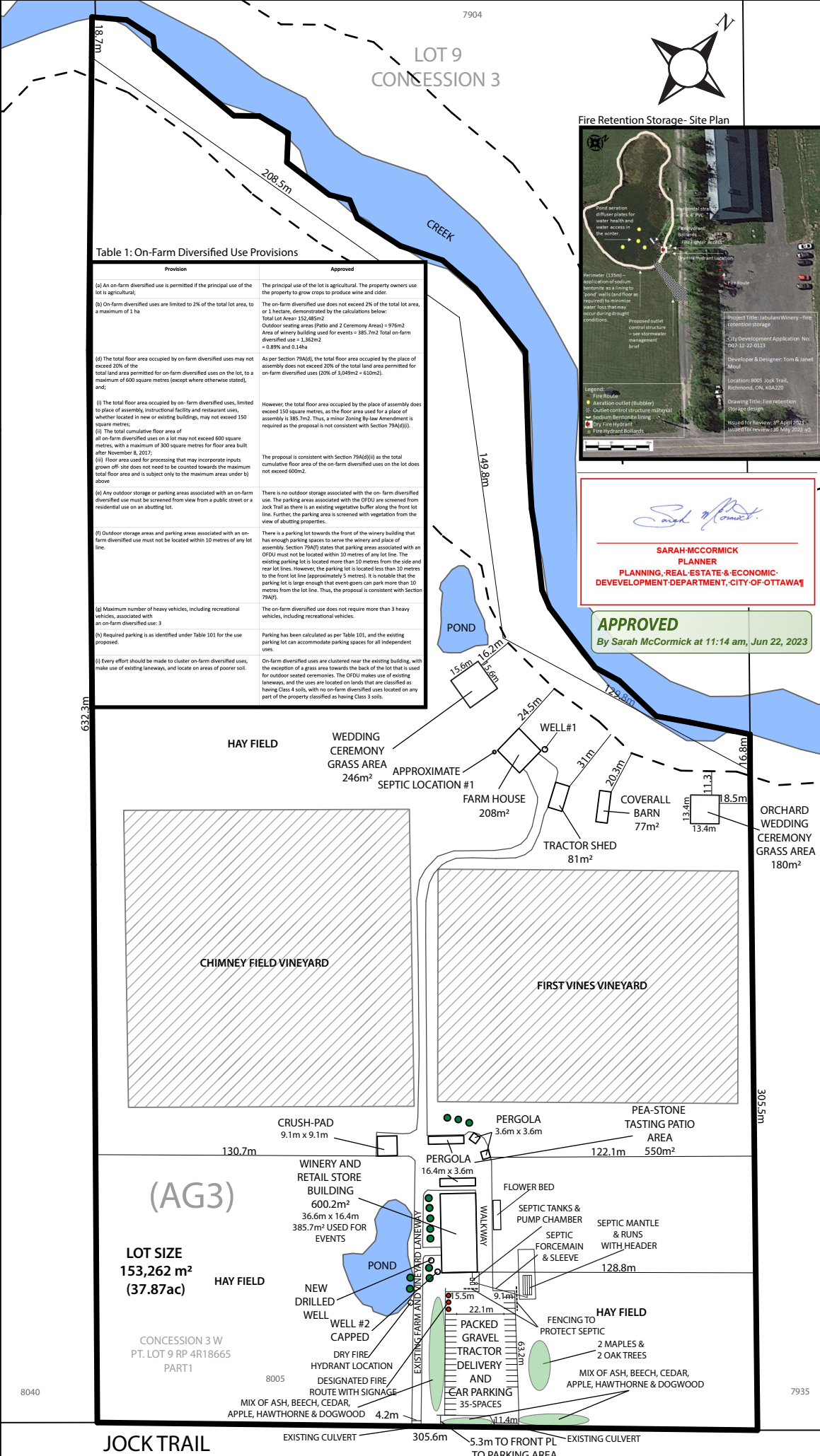
Notes
 1. Locations for the RVCA Regulation Limit derived from the RVCAonline GIS mapping. Their locations on the sketch are approximate.
 2. Boundary and dimensions for the subject property falling in Lot 9 Concession 3 derived from Plan 4R-18665 completed H.A. Ken Shipman Surveying LTD. in July of 2003. All other dimensions are approximate based on GIS mapping.
 3. Owners: Tom and Janet Moul, Structural Engineer: John MacIntyre, Mechanical Engineer: Terry Vivuyurka, Geotechnical Engineer: Craig Houle, Architect: Swapan Jeet Kaur



Version Date: June 01, 2023

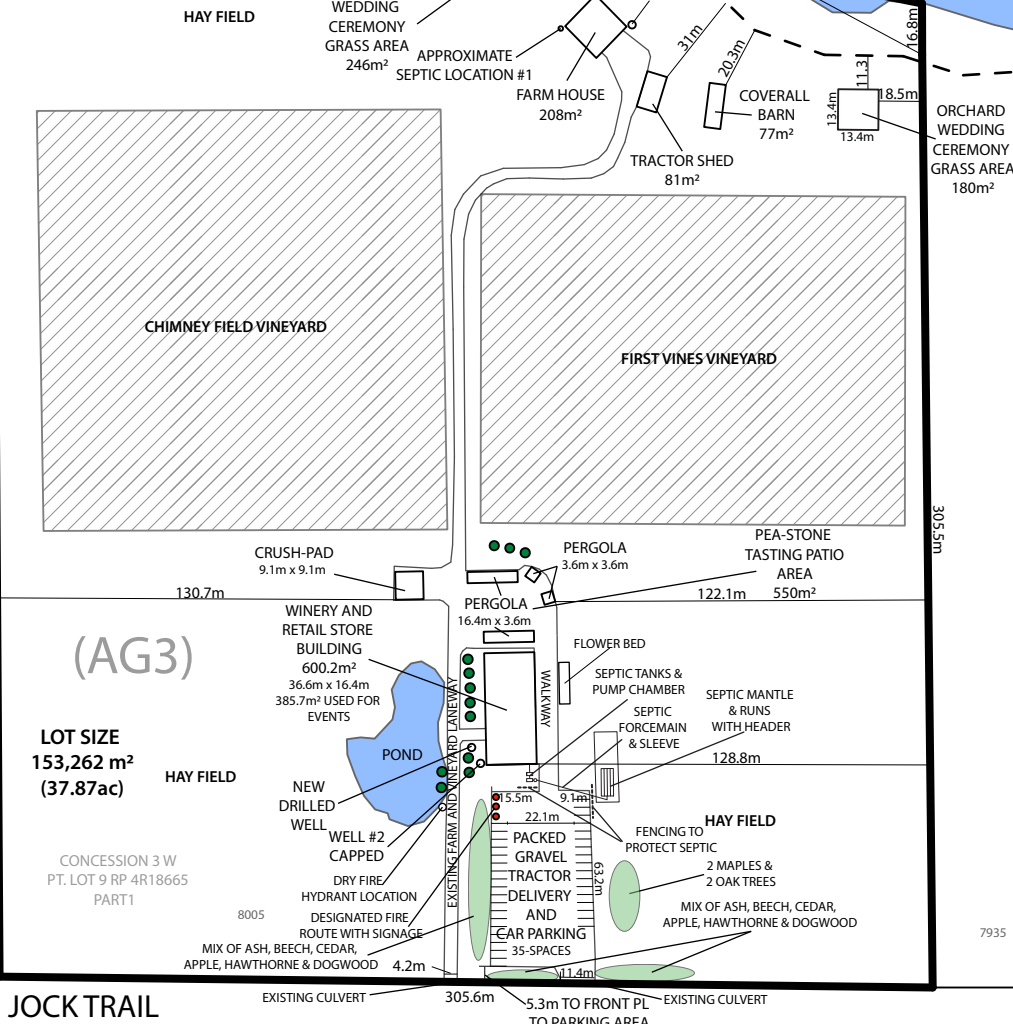
File No. 22-077 Drawn By: TG

ZANDERPLAN
 Your rural land planning experts
 40 Sunset Boulevard, Perth, ON K7H 2Y4 613-264-9600



Sarah McCormick
SARAH MCCORMICK
 PLANNER
 PLANNING, REAL ESTATE & ECONOMIC DEVELOPMENT DEPARTMENT, CITY OF OTTAWA

APPROVED
 By Sarah McCormick at 11:14 am, Jun 22, 2023



JOCK TRAIL

7935