

PARKING CALCULATIONS			
MOTOR VEHICLE PARKING			
REQUIRED - PARKING CALCULATIONS MAIN BUILDING (INCL. ADDITION)			
GRADES 7&8 = 1.5 STALLS/CLASS x 19 CLASSROOMS = 29 SPACES			
GRADES 9-12 = 2 STALLS/CLASS x 37 CLASSROOMS = 74 SPACES			
TOTAL REQUIRED PARKING SPACES MAIN BUILDING	103 SPACES		
REQUIRED - PARKING CALCULATIONS 16 EXISTING PORTABLES			
GRADES 7&8 = 1.5 STALLS/CLASS x 8 PORTABLES = 12 SPACES			
GRADES 9-12 = 2 STALLS/CLASS x 8 PORTABLES = 16 SPACES			
TOTAL REQUIRED PORTABLE PARKING SPACES	28 SPACES		
TOTAL REQUIRED ADDITIONAL PARKING SPACES FOR THE PHYSICALLY DISABLED PER CITY OF OTTAWA ACCESSIBILITY DESIGN STANDARD 3.1.2 TABLE 3.			
TYPE A	2 SPACES		
TYPE B	3 SPACES		
PROVIDED PARKING SPACES			
SPACES @ 5.2m X 2.6m	136 SPACES		
TYPE A BARRIER FREE SPACES @ 5.2m X 3.4m MIN.	2 SPACES		
TYPE B BARRIER FREE SPACES @ 5.2m X 2.6m	3 SPACES		
TOTAL SPACES PROVIDED	141 SPACES		
REQUIRED BICYCLE PARKING			
	GROSS AREA	SPACES PER	SPACES REQ'D
MAIN BUILDING INCLUDING ADDITION	7,963m ²	1 / 100m ²	80 SPACES
EXISTING PORTABLES	1,072m ²	1 / 100m ²	11 SPACES
TOTAL REQUIRED PARKING SPACES	91 SPACES		
TOTAL SPACES PROVIDED	108 SPACES		
LOADING SPACES (3.5m X 7m)			
	USE	TABLE 113A	SPACES REQ'D
SCHOOL	9,035m ²	COLUMN VI	2 SPACES
TOTAL SPACES PROVIDED	2 SPACES		

SITE DATA			
ANNIS, O'SULLIVAN, VOLLEBECK SURVEYING LTD. (613)-727-0850 JOB NO: 19381-17		LOT AREA 50,587 m ²	
LEGAL DESCRIPTION: PART OF LOTS 2 AND 3 CONCESSION 3 GEOGRAPHIC TOWNSHIP OF GLOUCESTER CITY OF OTTAWA		FOOTPRINT EXISTING SCHOOL FOOTPRINT 6,866 m ² NEW ADDITION FOOTPRINT 1,050 m ² EXISTING PORTABLES FOOTPRINT 1,157 m ²	
CITY OF OTTAWA ZONING		GROSS FLOOR AREA (GFA) (AS PER CITY OF OTTAWA ZONING DEFINITION) EXISTING SCHOOL GFA 6,835 m ² NEW ADDITION GFA 1,328 m ² EXISTING PORTABLES GFA 1,072 m ² TOTAL GROSS FLOOR AREA 9,035 m ²	
ZONING - I1B SUBZONE		REQUIRED	PROVIDED
LOT AREA	MIN. 400.0m ²	50,597m ²	
LOT WIDTH	MIN. 15.0m	209m	
LOT COVERAGE	MAX. 35%	15%	
BUILDING HEIGHT	MAX. 13.0m	11.8m	
FRONT YARD SETBACK	MIN. 7.5m	10.5m	
REAR YARD SETBACK	MIN. 7.5m	154.9m	
INTERIOR SIDE YARD SETBACK	MIN. 7.5m	43.0m	
CORNER SIDE YARD SETBACK	MIN. 4.5m	9.1m	

- ### DRAWING NOTES
- EXISTING PORTABLES
 - EXISTING PRECAST CONCRETE SHED
 - EXISTING GARBAGE ENCLOSURE
 - EXISTING TRANSFORMER
 - ARMOUR STONE SEATING CIRCLE NEW LOCATION

- ### GENERAL NOTES
- EXTENT OF CONTRACT IS LIMITED TO WITHIN PROPERTY EXCEPT WHERE SHOWN OTHERWISE.
 - ALL WORK OUTSIDE PROPERTY LINE TO BE CONSTRUCTED TO CITY OF OTTAWA CONSTRUCTION STANDARDS.
 - FOR LANDSCAPE/PLANTING DETAILS SEE DRAWING AS PREPARED BY JBLA.
 - FOR SITE GRADING INFORMATION SEE GRADING & DRAINAGE DRAWING AS PREPARED BY WSP.
 - FOR SITE SERVICES INFORMATION SEE SITE SERVICES DRAWING AS PREPARED BY WSP.
 - FOR SOIL INVESTIGATION REPORT REFER TO REPORT PREPARED BY EXP SERVICES.
 - SLOPES OF CONCRETE/PAVING AT DEPRESSED CURBS SHALL NOT EXCEED 5%.
 - CONTRACTOR TO VERIFY ALL DIMENSIONS ON SITE AND REPORT ANY ERRORS TO THE ARCHITECT. CONTRACTOR TO COORDINATE WITH ALL DRAWINGS.
 - FOR SITE SURVEY INFORMATION, SEE TOPOLOGICAL SURVEY DRAWING PREPARED BY .

LEGEND

	BARRIER FREE PARKING BUILDING ENTRANCE/EXIT
	EXISTING BOLLARD TO REMAIN
	EXISTING CURB
	EXISTING DEPRESSED CURB
	EXISTING SEMI-MOUNTABLE DEPRESSED CURB
	EXISTING CHAIN LINK FENCE TO REMAIN
	TO BE DEMOLISHED / REMOVED
	ROAD CENTER LINE
	FIRE ROUTE
	SET BACK LINE
	PROPERTY LOT LINE
	EXISTING FIRE ROUTE SIGN TO REMAIN
	EXISTING HANDICAPPED PARKING SIGN TO REMAIN
	EXISTING DROP-OFF SIGN TO REMAIN
	EXISTING ONE WAY SIGN TO REMAIN
	EXISTING NO ENTRY SIGN TO REMAIN
	EXISTING NO PARKING SIGN
	EXISTING LOADING AREA SIGN TO REMAIN
	EXISTING MISC. TRAFFIC SIGN TO REMAIN
	EXISTING LIGHT STANDARD TO REMAIN
	EXISTING IRON BAR (REFER TO SURVEY)
	EXISTING FIRE DEPARTMENT CONNECTION TO REMAIN
	EXISTING FIRE HYDRANT TO REMAIN
	EXISTING MAN HOLE TO REMAIN
	EXISTING CATCH BASIN TO REMAIN
	EXISTING FLAG POLE TO REMAIN
	NEW BOLLARD
	NEW CURB
	NEW DEPRESSED CURB
	NEW MAN HOLE (REFER TO CIVIL)
	NEW CATCH BASIN (REFER TO CIVIL)

LEGEND

	SHADE INDICATES EXISTING TO REMAIN
	EXISTING UNIT PAVERS TO REMAIN
	EXISTING UNIT PAVERS WITH HEAVY DUTY GRANULAR BASE TO REMAIN
	EXISTING HEAVY DUTY ASPHALT PAVING TO REMAIN
	EXISTING LIGHT DUTY ASPHALT PAVING TO REMAIN
	EXISTING CONCRETE WALK TO REMAIN
	EXISTING CRUSHED STONE PATHWAY TO REMAIN
	EXISTING MULCH TO REMAIN
	EXISTING TREES TO REMAIN (REFER TO LANDSCAPE DOCUMENTS)
	EXISTING ARMOUR STONE RETAINING WALL
	NEW ASPHALT - LIGHT DUTY (REFER TO SPEC.)
	NEW CONCRETE WALK
	NEW GRASS (REFER TO LANDSCAPE DOCUMENTS)
	NEW TREES (REFER TO LANDSCAPE DOCUMENTS)

ISSUE NO.	REV.	DATE	ISSUE
3	0	2023/06/02	ISSUED FOR FINAL SITE PLAN SUBMISSION
2	0	2023/04/26	SPC COMMENTS 01 RESPONSE
1	0	2022/11/11	ISSUED FOR SITE PLAN CONTROL

LES IDÉES, CONCEPTS, DISPOSITIONS ET PLANS MONTRÉS OU REPRÉSENTÉS PAR CE DESSIN APPARTIENNENT À EDWARD J. CUHACI AND ASSOCIATES ARCHITECTS INC. ET ONT ÉTÉ CRÉÉS ET DÉVELOPPÉS POUR ÊTRE UTILISÉS DANS LE CADRE DU PRÉSENT PROJET. ILS NE DOIVENT PAS ÊTRE UTILISÉS À D'AUTRES FINS NI COMMUNIQUÉS À QUI QUE CE SOIT SANS LA PERMISSION ÉCRITE DE EDWARD J. CUHACI AND ASSOCIATES ARCHITECTS INC.

L'ARCHITECTE DÉCLINE TOUTE RESPONSABILITÉ DÉCOULANT DE PROBLÈMES FAISANT SUITE AU NON-RESPECT DES PLANS ET DEVIS OU DE L'INTENTION DU CONCEPT QU'ILS TRANSMETTENT OU DE TOUTS PROBLÈMES POUVANT RÉSULTER DU DÉFAUT DE TIERS D'OBTENIR OU DE SUIVRE LES INSTRUCTIONS DE L'ARCHITECTE RELATIVEMENT AUX ERREURS, OMISSIONS, INCOHÉRENCES, AMBIGUITÉS OU CONTRADICTIONS ALLÉGUÉES.

L'ENTREPRENEUR DOIT VÉRIFIER TOUTES LES DIMENSIONS SUR PLACE ET INFORMER L'ARCHITECTE DE TOUT ÉCART AVANT LE DÉBUT DES TRAVAUX. NE PAS MESURER LES DESSINS À L'ÉCHELLE.

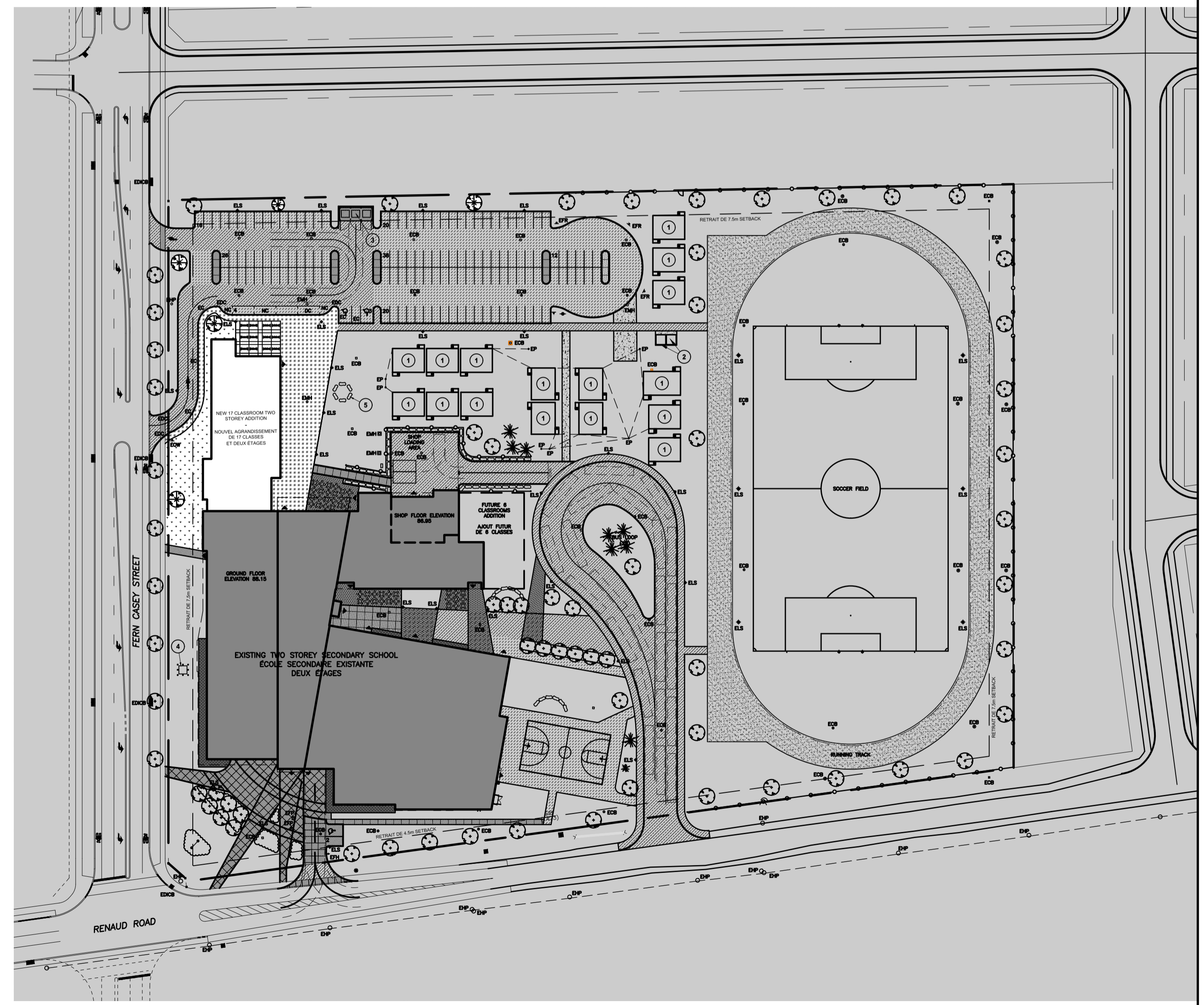
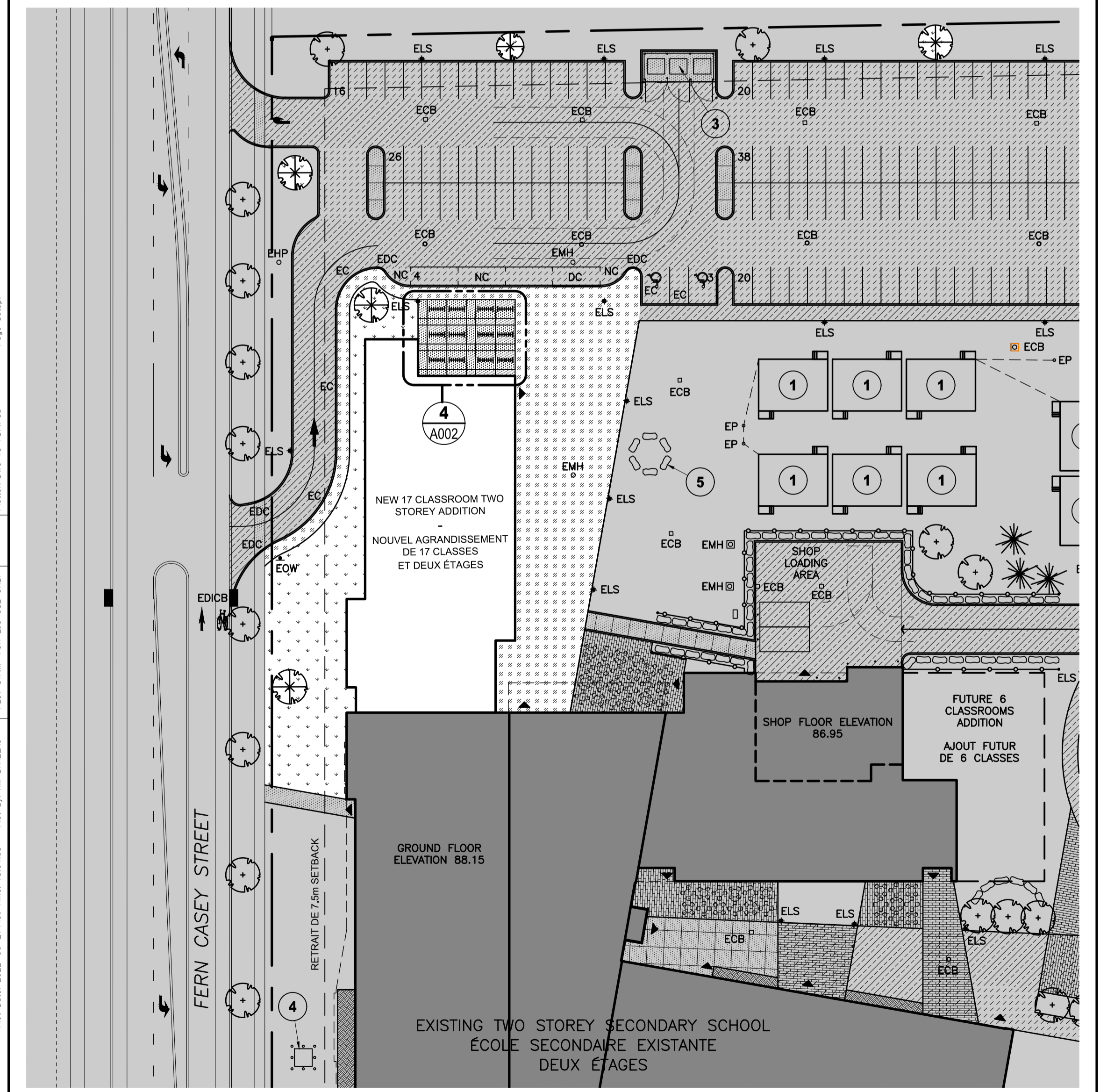
ALL IDEAS, DESIGNS, ARRANGEMENTS, AND PLANS INDICATED OR REPRESENTED BY THIS DRAWING ARE OWNED BY AND THE PROPERTY OF EDWARD J. CUHACI AND ASSOCIATES INC. AND WERE CREATED, EVOLVED, AND DEVELOPED FOR USE ON AND IN CONNECTION WITH THE SPECIFIED PROJECT. NONE OF THE IDEAS, DESIGNS, ARRANGEMENTS OR PLANS SHALL BE USED BY OR DISCLOSED TO ANY PERSON, FIRM, OR CORPORATION FOR ANY PURPOSE WHATSOEVER WITHOUT THE WRITTEN PERMISSION OF EDWARD J. CUHACI AND ASSOCIATES INC.

THE ARCHITECT WAIVES ANY AND ALL RESPONSIBILITY AND LIABILITY FOR PROBLEMS WHICH ARISE FROM FAILURE TO FOLLOW THESE PLANS, SPECIFICATIONS, AND THE DESIGN INTENT THEY CONVEY, OR FOR PROBLEMS WHICH ARISE FROM OTHERS' FAILURE TO OBTAIN AND/OR FOLLOW THE ARCHITECT'S GUIDANCE WITH RESPECT TO ANY ERRORS, OMISSIONS, INCONSISTENCIES, AMBIGUITIES OR CONFLICTS WHICH ARE ALLEGED.

CONTRACTOR TO VERIFY ALL DIMENSIONS AND NOTIFY THE ARCHITECT OF ANY DISCREPANCIES BEFORE WORK COMMENCES. DO NOT SCALE DRAWINGS.

TRUE NORTH

PLAN NORTH



171 Slater St. Suite 100, Ottawa, Ontario, K1P 5H7
Fax: (613) 238-1944 Telephone: (613) 238-7135 E-mail: info@cuhaci.com

PROJECT TITLE/TITRE DU PROJET
COLLÈGE CATHOLIQUE MER BLEUE - ADDITION
6401 RENAUD RD, OTTAWA, ON, K1W 0H8

CONSEIL DES ÉCOLES CATHOLIQUES DU CENTRE-EST
4000, RUE LABELLE, OTTAWA, ON K1J 1A1

DRAWING TITLE/TITRE DU DESSIN
SITE PLAN

SCALE	PROJ. No	ISSUE No	REV. No
ÉCHELLE	2237	1	0

DRAWN BY	DRAWING/DESSIN
DESIGNÉ PAR	TB

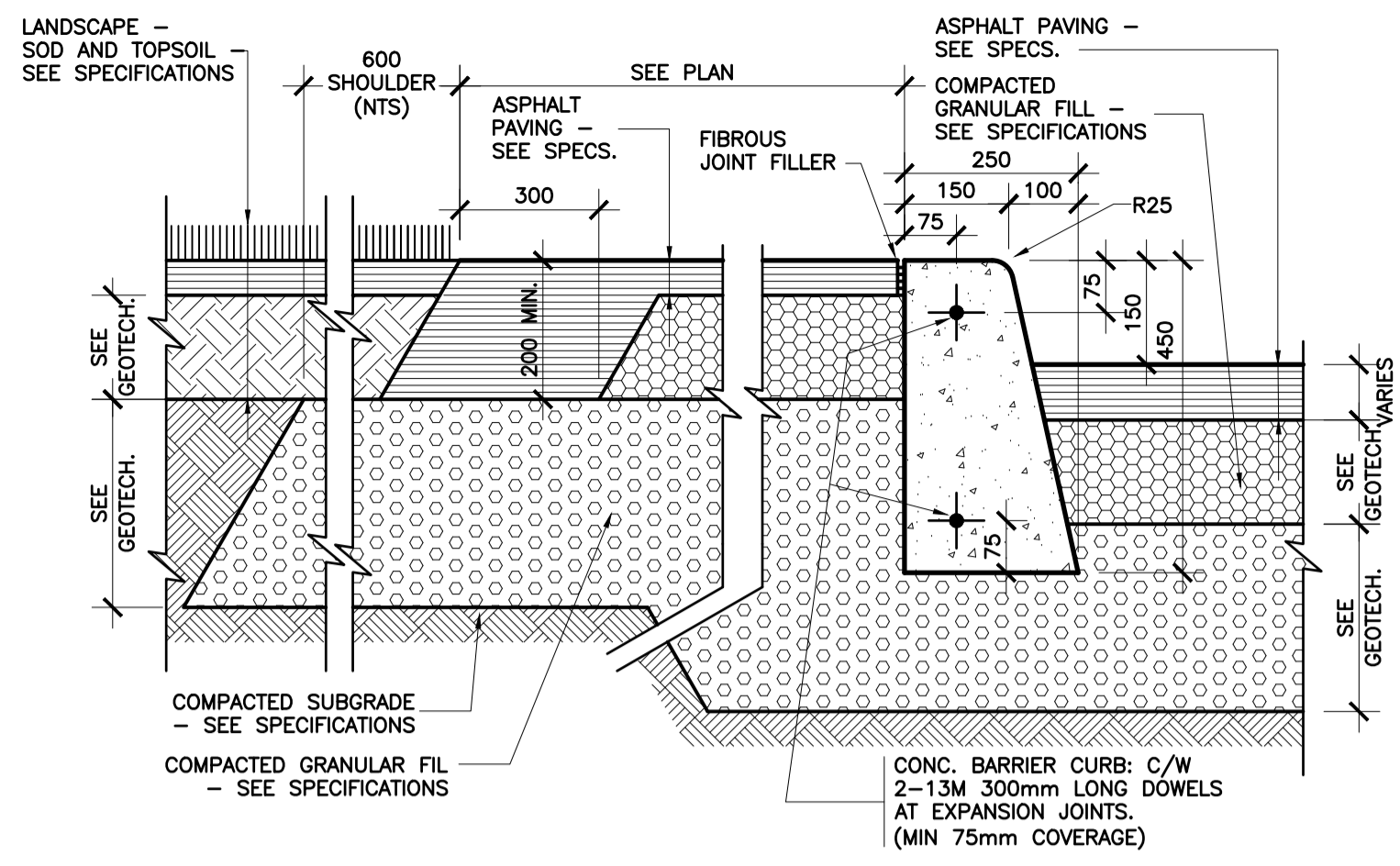
CHECKED BY	DATE
VÉRIFIÉ PAR	2022

A001

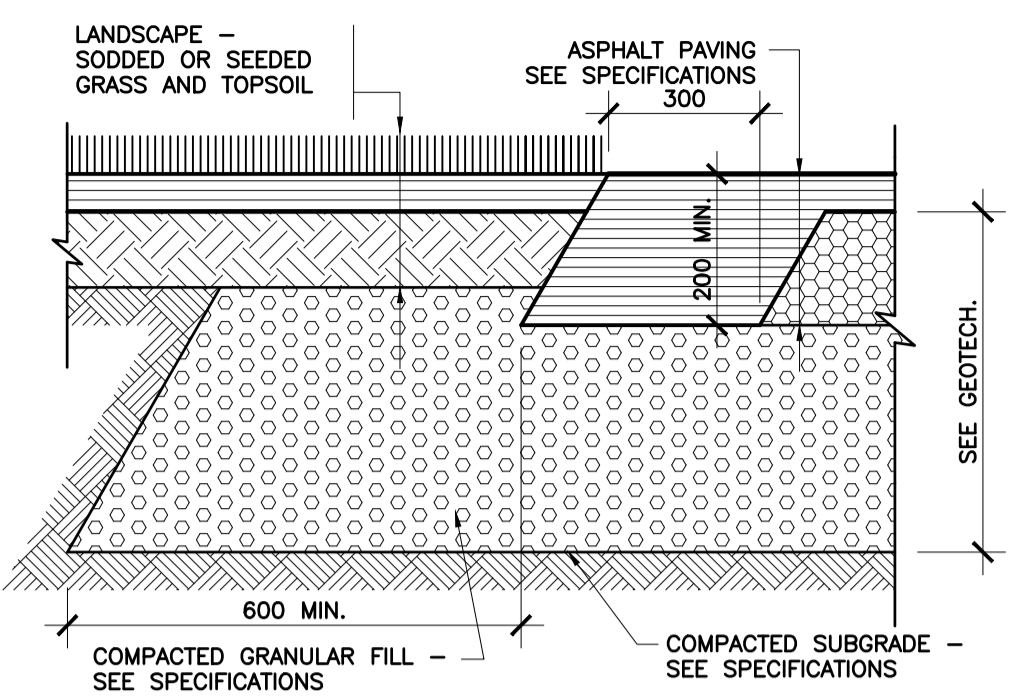
FICHER ACAD FILE: 2237-A001 SPC.dwg

Plot Date: 2022-06-27 Plot Time: 15:54:53 Plot By: IM BRUNDU
 Plot Stamp For Use Only
 Plotter: DWG TO PDF v3.3
 Page Setup

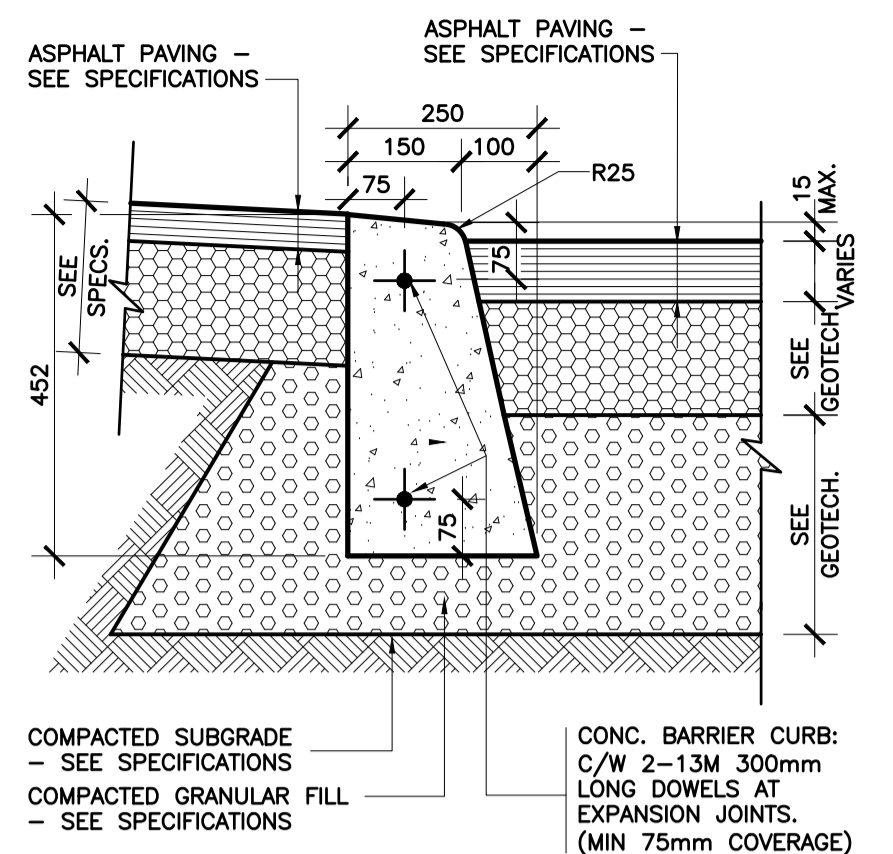
D07-12-23-0009



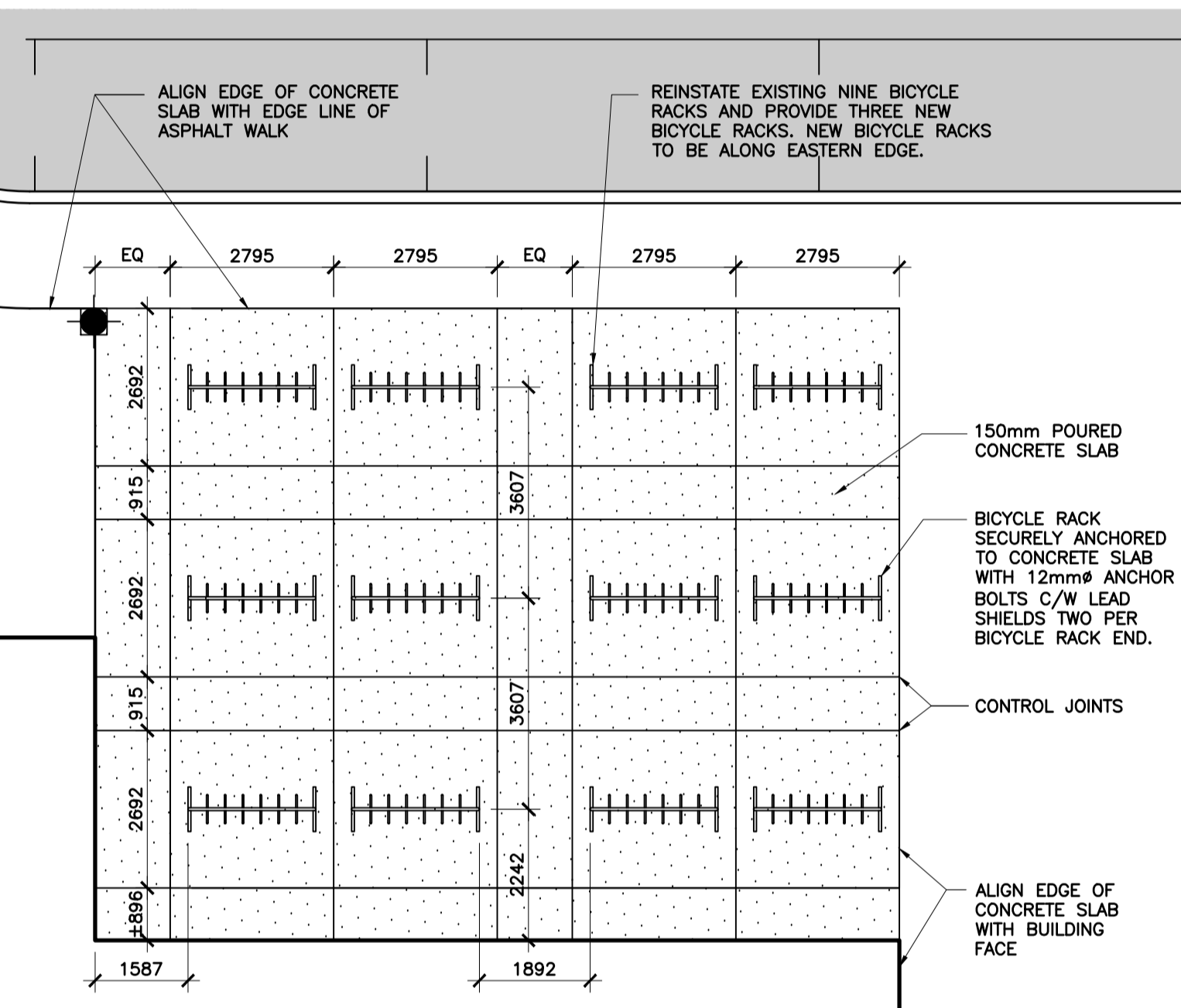
SECTION DETAIL
1 ASPHALT SIDEWALK
A002 1:10



SECTION DETAIL
2 ASPHALT AT GRASS
A002 1:10



SECTION DETAIL
3 DEPRESSED CURB AT ASPHALT WALK
A002 1:10



PLAN DETAIL
4 BICYCLE PARKING
A002 1:100

3	0	2023/06/02	ISSUED FOR FINAL SITE PLAN SUBMISSION
2	0	2023/04/26	SPC COMMENTS 01 RESPONSE
1	0	2022/11/11	ISSUED FOR SITE PLAN CONTROL

ISSUE NO.	REV. NO.	DATE	ISSUE
-----------	----------	------	-------

LES IDÉES, CONCEPTS, DISPOSITIONS ET PLANS MONTRÉS OU REPRÉSENTÉS PAR CE DESSIN APPARTIENNENT À EDWARD J. CUHACI AND ASSOCIATES ARCHITECTS INC. ET ONT ÉTÉ CRÉÉS ET DÉVELOPPÉS POUR ÊTRE UTILISÉS DANS LE CADRE DU PRÉSENT PROJET. ILS NE DOIVENT PAS ÊTRE UTILISÉS À D'AUTRES FINS NI COMMUNIQUÉS À QUI QUE CE SOIT SANS LA PERMISSION ÉCRITE DE EDWARD J. CUHACI AND ASSOCIATES ARCHITECTS INC.

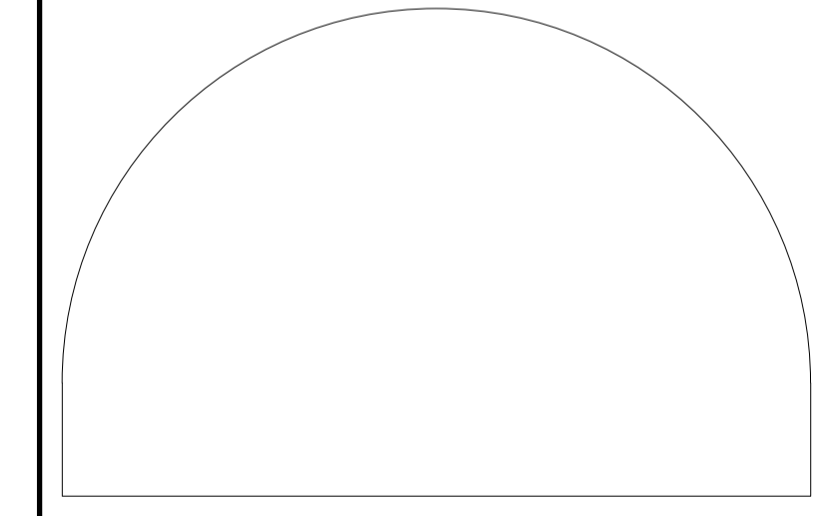
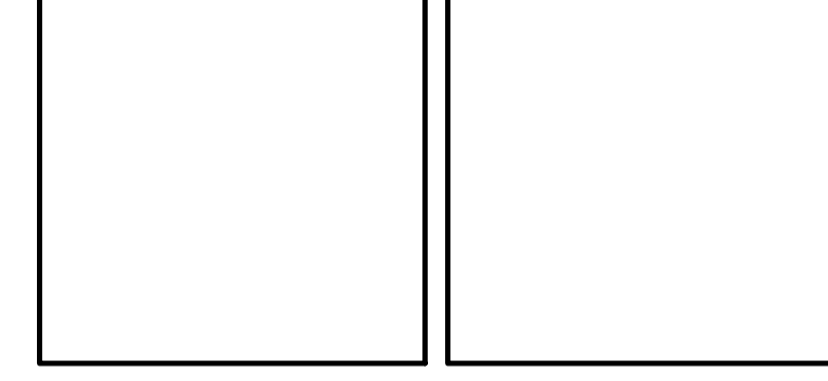
L'ARCHITECTE DÉCLINE TOUTE RESPONSABILITÉ DÉCOULANT DE PROBLÈMES FAISANT SUITE AU NON-RESPECT DES PLANS ET DEVIS OU DE L'INTENTION DU CONCEPT QU'ILS TRANSMETTENT OU DE TOUTS PROBLÈMES POUVANT RÉSULTER DU DÉFAUT DE TIERS D'OBTENIR OU DE SUIVRE LES INSTRUCTIONS DE L'ARCHITECTE RELATIVEMENT AUX ERREURS, OMISSIONS, INCOHÉRENCES, AMBIGUITÉS OU CONTRADICTIONS ALLÉGUÉES.

L'ENTREPRENEUR DOIT VÉRIFIER TOUTES LES DIMENSIONS SUR PLACE ET INFORMER L'ARCHITECTE DE TOUT ÉCART AVANT LE DÉBUT DES TRAVAUX. NE PAS MESURER LES DESSINS À L'ÉCHELLE.

ALL IDEAS, DESIGNS, ARRANGEMENTS, AND PLANS INDICATED OR REPRESENTED BY THIS DRAWING ARE OWNED BY AND THE PROPERTY OF EDWARD J. CUHACI AND ASSOCIATES INC. AND WERE CREATED, EVOLVED, AND DEVELOPED FOR USE ON AND IN CONNECTION WITH THE SPECIFIED PROJECT. NONE OF THE IDEAS, DESIGNS, ARRANGEMENTS OR PLANS SHALL BE USED BY OR DISCLOSED TO ANY PERSON, FIRM, OR CORPORATION FOR ANY PURPOSE WHATSOEVER WITHOUT THE WRITTEN PERMISSION OF EDWARD J. CUHACI AND ASSOCIATES INC.

THE ARCHITECT WAIVES ANY AND ALL RESPONSIBILITY AND LIABILITY FOR PROBLEMS WHICH ARISE FROM FAILURE TO FOLLOW THESE PLANS, SPECIFICATIONS, AND THE DESIGN INTENT THEY CONVEY, OR FOR PROBLEMS WHICH ARISE FROM OTHERS' FAILURE TO OBTAIN AND/OR FOLLOW THE ARCHITECT'S GUIDANCE WITH RESPECT TO ANY ERRORS, OMISSIONS, INCONSISTENCIES, AMBIGUITIES OR CONFLICTS WHICH ARE ALLEGED.

CONTRACTOR TO VERIFY ALL DIMENSIONS AND NOTIFY THE ARCHITECT OF ANY DISCREPANCIES BEFORE WORK COMMENCES. DO NOT SCALE DRAWINGS



EDWARD J. CUHACI & ASSOCIATES ARCHITECTS Inc.
171 Slater St. Suite 100, Ottawa, Ontario, K1P 5H7
Fax: (613) 238-1944 Telephone: (613) 238-7135 E-mail: info@cuhaci.com

PROJECT TITLE/TITRE DU PROJET
COLLÈGE CATHOLIQUE MER BLEUE - ADDITION
6401 RENAUD RD, OTTAWA, ON, K1W 0H8

CONSEIL DES ÉCOLES CATHOLIQUES DU CENTRE-EST
4000, RUE LABELLE, OTTAWA, ON K1J 1A1






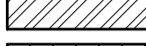


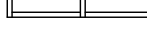
DRAWING TITLE/TITRE DU DESSIN
SITE DETAILS

SCALE ÉCHELLE	PROJ. No 2237	ISSUE No 1	REV. No 0
DRAWN BY DESSINÉ PAR	TB	DRAWING/DESSIN	
CHECKED BY VÉRIFIÉ PAR	JJ	A002	
DATE	2022	FICHER ACAD FILE: 2237-A002 SPC.dwg	

D07-12-23-0009

Plot Date: 2022-06-27 Plot Time: 15:54:53 Plot By: TM BRNDJOU Plot Stamp For Use Only Plotter: DWG TO PDF.PLC3 Page Setup

LEGEND

-  EXISTING BUILDING
-  TILT-UP CONCRETE PANEL - PAINT COLOUR 1
-  TILT-UP CONCRETE PANEL - PAINT COLOUR 2
-  TILT-UP CONCRETE PANEL - PAINT COLOUR 3
-  TILT-UP CONCRETE PANEL - PAINT COLOUR 4
-  REUSED EXISTING COMPOSITE ALUMINUM PANELS
-  THIN BRICK VENEER ON TILT-UP PANEL
-  SPANDREL GLAZING
-  GLAZED CURTAIN WALL

2	0	2023/06/02	ISSUED FOR FINAL SITE PLAN SUBMISSION
1	0	2022/11/11	ISSUED FOR SITE PLAN CONTROL

ISSUE NO. REV. NO. DATE ISSUE

LES IDÉES, CONCEPTS, DISPOSITIONS ET PLANS MONTRÉS OU REPRÉSENTÉS PAR CE DESSIN APPARTIENNENT À EDWARD J. CUHACI AND ASSOCIATES ARCHITECTS INC. ET ONT ÉTÉ CRÉÉS ET DÉVELOPPÉS POUR ÊTRE UTILISÉS DANS LE CADRE DU PRÉSENT PROJET. ILS NE DOIVENT PAS ÊTRE UTILISÉS À D'AUTRES FINS NI COMMUNIQUÉS À QUI QUE CE SOIT SANS LA PERMISSION ÉCRITE DE EDWARD J. CUHACI AND ASSOCIATES ARCHITECTS INC.

L'ARCHITECTE DÉCLINE TOUTE RESPONSABILITÉ DÉCOULANT DE PROBLÈMES FAISANT SUITE AU NON-RESPECT DES PLANS ET DEVIS OU DE L'INTENTION DU CONCEPT QU'ILS TRANSMETTENT OU DE TOUTS PROBLÈMES POUVANT RÉSULTER DU DÉFAUT DE TIERS D'OBTENIR OU DE SUIVRE LES INSTRUCTIONS DE L'ARCHITECTE RELATIVEMENT AUX ERREURS, OMISSIONS, INCOHÉRENCES, AMBIGUITÉS OU CONTRADICTIONS ALLÉGUÉES.

L'ENTREPRENEUR DOIT VÉRIFIER TOUTES LES DIMENSIONS SUR PLACE ET INFORMER L'ARCHITECTE DE TOUT ÉCART AVANT LE DÉBUT DES TRAVAUX. NE PAS MESURER LES DESSINS À L'ÉCHELLE.

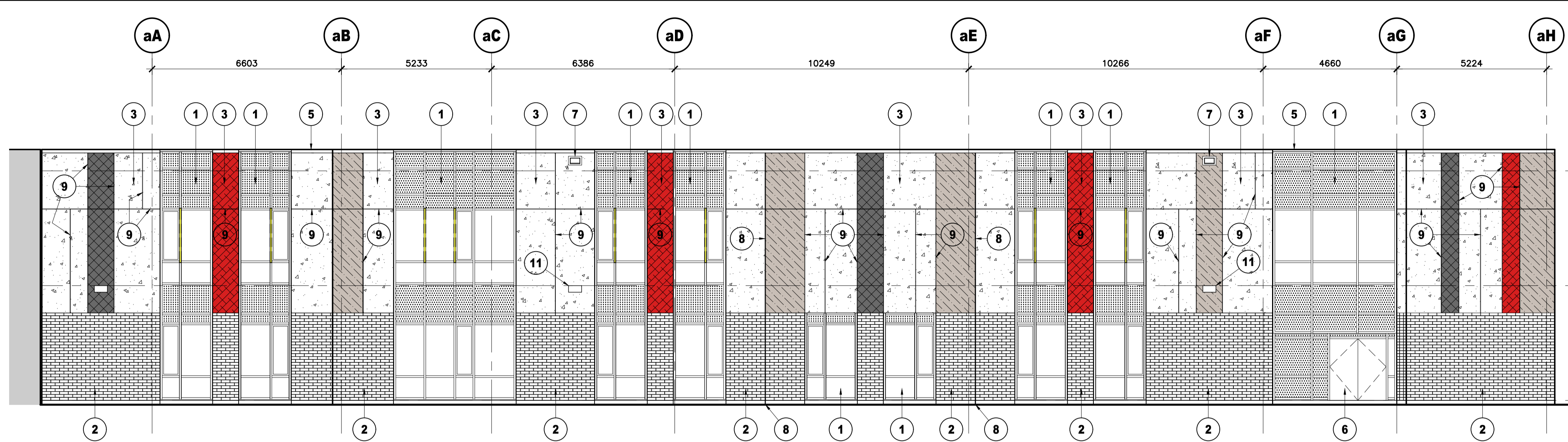
DRAWING NOTES

- 1 NEW CURTAIN WALL ASSEMBLY, REFER TO WINDOW SCHEDULE
- 2 NEW TILT-UP CONCRETE PANEL WITH THIN BRICK VENEER
- 3 NEW TILT-UP CONCRETE PANEL WITH PAINT FINISH, REFER TO LEGEND.
- 4 NEW TILT-UP CONCRETE PANEL WITH RELOCATED EXISTING COMPOSITE ALUMINUM PANELS. REFER TO DETAILS FOR ARRANGEMENT INFORMATION.
- 5 NEW PARAPET CAP FLASHING
- 6 NEW ALUMINUM DOOR, REFER TO DOOR SCHEDULE
- 7 NEW OVERFLOW ROOF SCUPPER
- 8 NEW TILT-UP CONCRETE PANEL JOINT
- 9 NEW TILT-UP CONCRETE 13mm WIDE REVEAL JOINTS, REFER TO DETAIL. ALIGN WITH CENTER OF NEIGHBOURING CURTAIN WALL MULLIONS WHERE APPLICABLE. ALIGN WITH EDGE OF CURTAIN WALL ROUGH OPENING/BRICK RETURN FACE WHERE APPLICABLE.
- 10 GRADE, REFER TO CIVIL DOCUMENTS
- 11 EXTERIOR WALL MOUNTED LIGHT FIXTURE, REFER TO ELECTRICAL CENTER LIGHTS ON PANEL BETWEEN PANEL VERTICAL REVEALS AND PANEL EDGE.

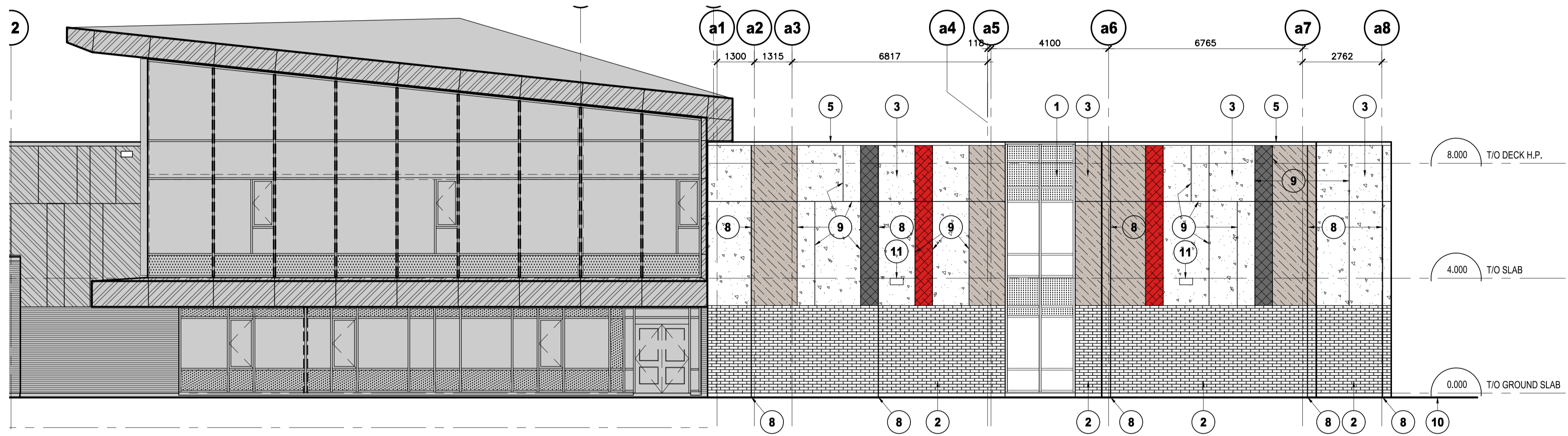
ALL IDEAS, DESIGNS, ARRANGEMENTS, AND PLANS INDICATED OR REPRESENTED BY THIS DRAWING ARE OWNED BY AND THE PROPERTY OF EDWARD J. CUHACI AND ASSOCIATES INC. AND WERE CREATED, EVOLVED, AND DEVELOPED FOR USE ON AND IN CONNECTION WITH THE SPECIFIED PROJECT. NONE OF THE IDEAS, DESIGNS, ARRANGEMENTS OR PLANS SHALL BE USED BY OR DISCLOSED TO ANY PERSON, FIRM, OR CORPORATION FOR ANY PURPOSE WHATSOEVER WITHOUT THE WRITTEN PERMISSION OF EDWARD J. CUHACI AND ASSOCIATES INC.

THE ARCHITECT WAIVES ANY AND ALL RESPONSIBILITY AND LIABILITY FOR PROBLEMS WHICH ARISE FROM FAILURE TO FOLLOW THESE PLANS, SPECIFICATIONS, AND THE DESIGN INTENT THEY CONVEY, OR FOR PROBLEMS WHICH ARISE FROM OTHERS' FAILURE TO OBTAIN AND/OR FOLLOW THE ARCHITECT'S GUIDANCE WITH RESPECT TO ANY ERRORS, OMISSIONS, INCONSISTENCIES, AMBIGUITIES OR CONFLICTS WHICH ARE ALLEGED.

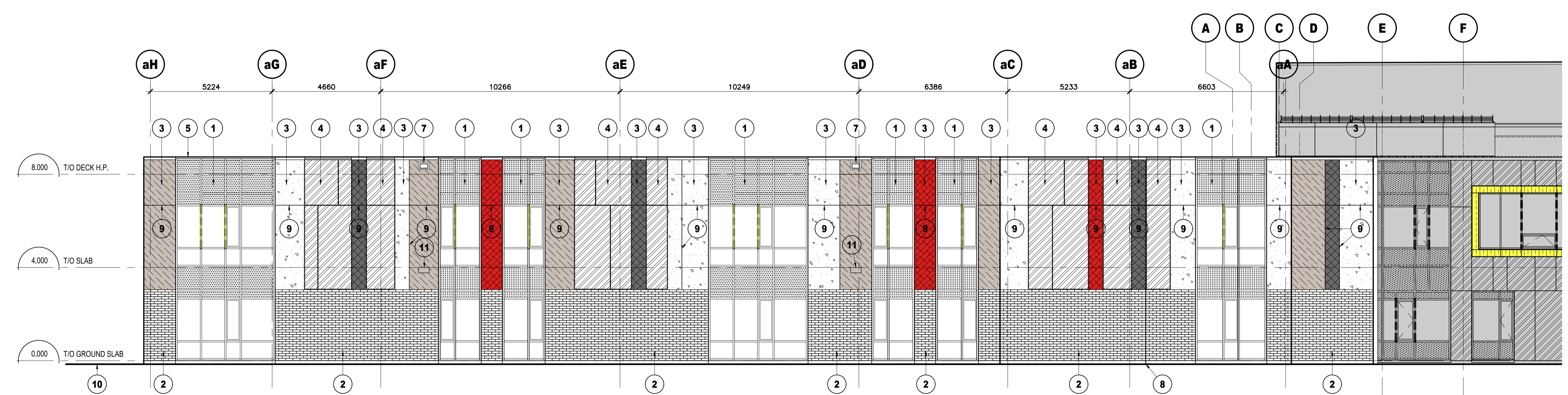
CONTRACTOR TO VERIFY ALL DIMENSIONS AND NOTIFY THE ARCHITECT OF ANY DISCREPANCIES BEFORE WORK COMMENCES. DO NOT SCALE DRAWINGS



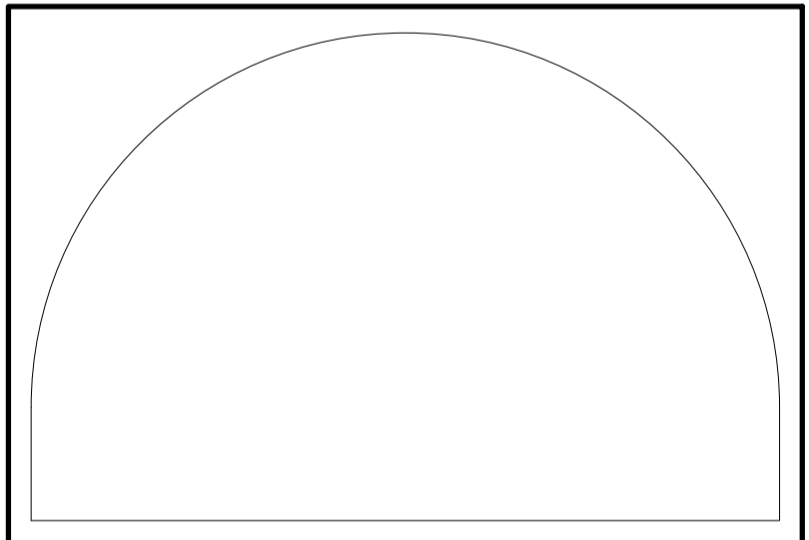
2 EAST ADDITION ELEVATION
A200 1:100



3 SOUTH ADDITION ELEVATION
A200 1:100



4 WEST ADDITION ELEVATION
A200 1:100



EDWARD J. CUHACI & ASSOCIATES ARCHITECTS Inc.
171 Slater St, Suite 100, Ottawa, Ontario, K1P 5H7
Fax: (613) 238-1944 Telephone: (613) 238-7135 E-mail: info@edcuhaci.com

PROJECT TITLE/TITRE DU PROJET
COLLÈGE CATHOLIQUE MER BLEUE - ADDITION
6401 RENAUD RD, OTTAWA, ON, K1W 0H8

CONSEIL DES ÉCOLES CATHOLIQUES DU CENTRE-EST
4000, RUE LABELLE, OTTAWA, ON K1J 1A1

DRAWING TITLE/TITRE DU DESSIN
SITE PLAN

SCALE / ÉCHELLE	PROJ. No.	ISSUE No.	REV. No.
	2237	1	0
DRAWN BY / DESSINÉ PAR	DRAWING/DESSIN		
CHECKED BY / VÉRIFIÉ PAR	TB/JJ		
DATE	2022	A200	
FICHER ACAD FILE: 2237-A200 SPC.dwg			