

LEGEND

- Lot limit
- Intervention limit
- Top level soil slope
- Bottom level soil slope
- Proposed deciduous trees and shrubs
- Proposed coniferous trees and shrubs
- Perennials and grasses
- Turf
- Lighting, see lighting plan

MAGIL LAURENTIENNE
 ML Wellington Realty Investments Inc.
 C/O ML DEV CO INC
 651, Churchill Avenue N
 Ottawa (Ontario) K1Z 5G2
 Tel: 613-666-6319

Revisions

No	Description	Appr.	Date
1	Preliminary issue	S.G.	11/15/21
2	Site Plan Control	S.G.	12/10/21
3	Site Plan Control	S.G.	12/13/21
4	Site Plan Control	S.G.	12/15/21
5	Site Plan Control	S.G.	03/18/22
6	Site Plan Control	S.G.	06/23/22
7	Coordination plans - 99%	S.G.	08/26/22
8	Site Plan Control	S.G.	12/13/22
9	Site Plan Control	S.G.	02/24/23
10	Site Plan Control	S.G.	03/13/23
11	Site Plan Control - REVISION 01	S.G.	03/29/23
12	Site Plan Control - REVISION 02	S.G.	04/24/23
13	Site Plan Control - REVISION 03	S.G.	05/09/23

DO NOT USE FOR CONSTRUCTION

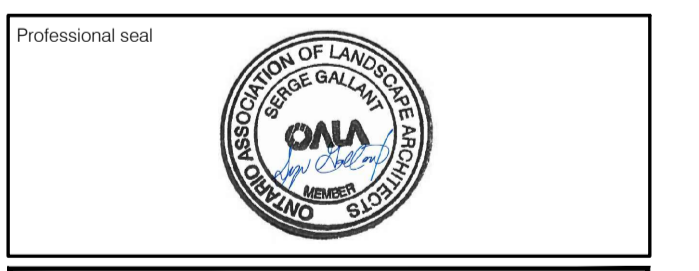
Andrew McCreight
ANDREW MCCREIGHT
 MANAGER (A), DEVELOPMENT REVIEW CENTRAL
 PLANNING, REAL ESTATE & ECONOMIC DEVELOPMENT
 DEPARTMENT, CITY OF OTTAWA

APPROVED
 By Andrew McCreight at 9:20 am, Jun 15, 2023

- Notes :**
- The Contractor must verify all site existing conditions before beginning the work and inform the Project Director of any errors, omissions or contradictions.
 - Existing grades indicated on the plan come from the survey provided by the owner.
 - The Contractor must not cut down any existing vegetation without the approval of the Project Director.
 - Implantation of the works on site must be approved by the Project Director.
 - The Contractor must use the CAD file for implantation of all work.
 - The contractor must verify the amounts specified in the schedule and notify the landscape architect of any errors, omissions or contradictions before the close of the bid.

PROJET | PAYSAGE

24 Mont-Royal O. Bureau 801 Montréal Québec H2T 2S2
 T: 514-849-7700 F: 514-849-2027 info@projetpaysage.com



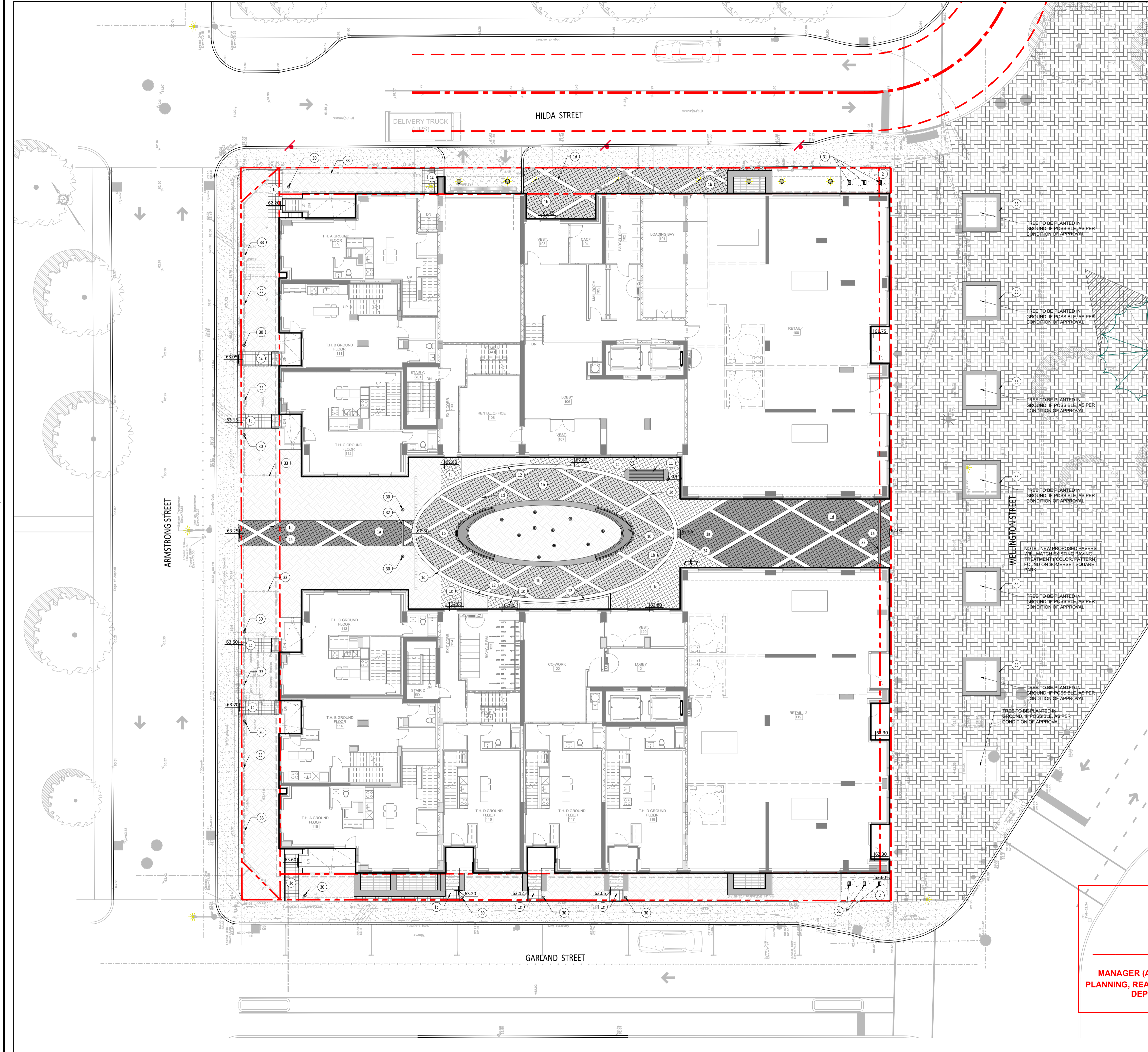
Project name:
979, WELLINGTON
D017-12-21-0228

Drawing title:
LANDSCAPE PLAN



Designed by: S. Gallant	Sheet No.: AP-10
Drawn by: X. Benjamin	
Approved by: S. Gallant	
Date: November 2020	
Plan No: 18841	

D017-12-21-0228



LEGEND

- Lot limit
- Intervention limit
- Proposed levels
- TW Top low wall
- TB Top border
- TS Top staircase
- TD Top soil slope
- TT Top drain
- BW Bottom low wall
- BB Bottom border
- BS Bottom staircase
- BT Bottom soil slope
- HP High point
- High level soil slope
- Bottom level soil slope
- Lighting, see lighting plan
- Tree pit, see details
- Planting bed, see planting plan
- Grass or seeding, see planting plan

List of details on plans

Key Description

Surfaces

01 Pavers
 a: Type A
 b: Type B
 c: Type C
 d: Type D

02 Poured concrete surface

Precast concrete

10 Modular precast concrete bench
 11 Precast concrete bench
 12 Precast concrete curb

Equipment and furniture

30 Bollard lighting (See civil)
 31 Bike rack
 32 Trench drain
 33 Low decorative rough iron fence
 34 Trash bin
 35 Aluminum planter

Client

M.L. Wellington Realty Investments Inc.
 C/O MIL DEVOO INC
 651, Churchill Avenue N
 Ottawa (Ontario) K1Z 5G2
 Tel: 613-666-6319

Revisions

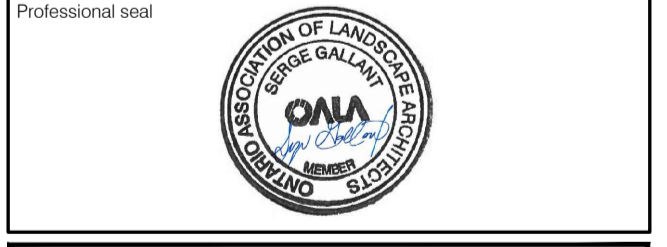
No	Description	Appr.	Date
1	Preliminary issue	S.G.	11/15/21
2	Site Plan Control	S.G.	12/10/21
3	Site Plan Control	S.G.	12/13/21
4	Site Plan Control	S.G.	12/15/21
5	Site Plan Control	S.G.	03/18/22
6	Site Plan Control	S.G.	06/23/22
7	Coordination plans - 99%	S.G.	08/26/22
8	Site Plan Control	S.G.	12/13/22
9	Site Plan Control	S.G.	02/24/23
10	Site Plan Control	S.G.	03/13/23
11	Site Plan Control - REVISION 01	S.G.	03/29/23
12	Site Plan Control - REVISION 02	S.G.	04/24/23
13	Site Plan Control - REVISION 03	S.G.	05/09/23

DO NOT USE FOR CONSTRUCTION

- Notes :**
- The Contractor must verify all site existing conditions before beginning the work and inform the Project Director of any errors, omissions or contradictions.
 - Existing grades indicated on the plan come from the survey provided by the owner.
 - The Contractor must not cut down any existing vegetation without the approval of the Project Director.
 - Implantation of the works on site must be approved by the Project Director.
 - The Contractor must use the CAD file for implantation of all work.
 - The contractor must verify the amounts specified in the schedule and notify the landscape architect of any errors, omissions or contradictions before the close of the bid.

PROJET | PAYSAGE

24 Mont-Royal O. Bureau 801 Montréal Québec H2T 2S2
 T: 514-849-7700 F: 514-849-2027 info@projetpaysage.com



Project name
**979, WELLINGTON
 D017-12-21-0228**

Drawing title
DESCRIPTION PLAN

Scale: 1:150

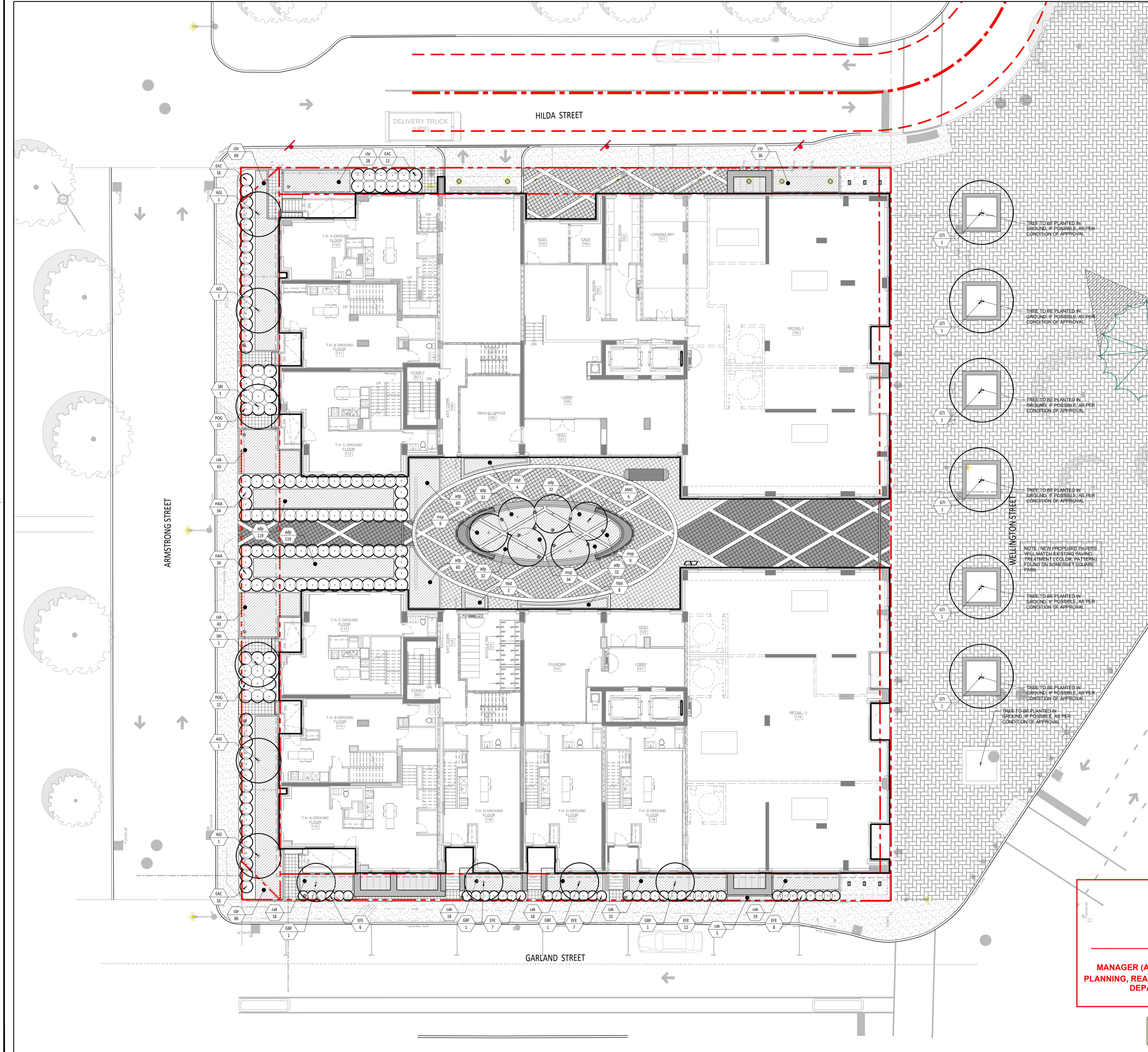
Andrew McCreight

ANDREW MCCREIGHT
 MANAGER (A), DEVELOPMENT REVIEW CENTRAL
 PLANNING, REAL ESTATE & ECONOMIC DEVELOPMENT
 DEPARTMENT, CITY OF OTTAWA

APPROVED
 By Andrew McCreight at 9:20 am, Jun 15, 2023

Designed by S. Gallant	Sheet No.:
Drawn by X. Benjamin	AP-20
Approved by S. Gallant	
Date: November 2020	
Plan No: 18841	

D017-12-21-0228



LEGEND

- Lot limit
- Intervention limit
- Proposed deciduous trees and shrubs
- Proposed coniferous trees and shrubs
- Perennials and grasses
- Turf
- Planting key

MAGIL LAURENTIENNE
 ML Wellington Realty Investments Inc.
 C/O ML DEV CO INC
 651, Churchill Avenue N
 Ottawa (Ontario) K1Z 5G2
 Tel: 613-666-6319

Revisions

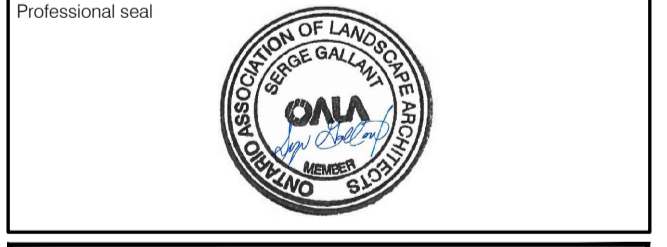
No	Description	Appr.	Date
1	Preliminary issue	S.G.	11/15/21
2	Site Plan Control	S.G.	12/10/21
3	Site Plan Control	S.G.	12/13/21
4	Site Plan Control	S.G.	12/15/21
5	Site Plan Control	S.G.	03/18/22
6	Site Plan Control	S.G.	06/23/22
7	Coordination plans - 99%	S.G.	08/26/22
8	Site Plan Control	S.G.	12/13/22
9	Site Plan Control	S.G.	02/24/23
10	Site Plan Control	S.G.	03/13/23
11	Site Plan Control - REVISION 01	S.G.	03/29/23
12	Site Plan Control - REVISION 02	S.G.	04/24/23
13	Site Plan Control - REVISION 03	S.G.	05/09/23

DO NOT USE FOR CONSTRUCTION

- Notes :**
- The Contractor must verify all site existing conditions before beginning the work and inform the Project Director of any errors, omissions or contradictions.
 - Existing grades indicated on the plan come from the survey provided by the owner.
 - The Contractor must not cut down any existing vegetation without the approval of the Project Director.
 - Implantation of the works on site must be approved by the Project Director.
 - The Contractor must use the CAD file for implantation of all work.
 - The contractor must verify the amounts specified in the schedule and notify the landscape architect of any errors, omissions or contradictions before the close of the bid.

PROJET | PAYSAGE

24 Mont-Royal O. Bureau 801 Montréal Québec H2T 2S2
 T: 514.849.7700 F: 514.849.2027 info@projetpaysage.com



Project name:
**979, WELLINGTON
 D017-12-21-0228**

Drawing title:
PLANTING PLAN

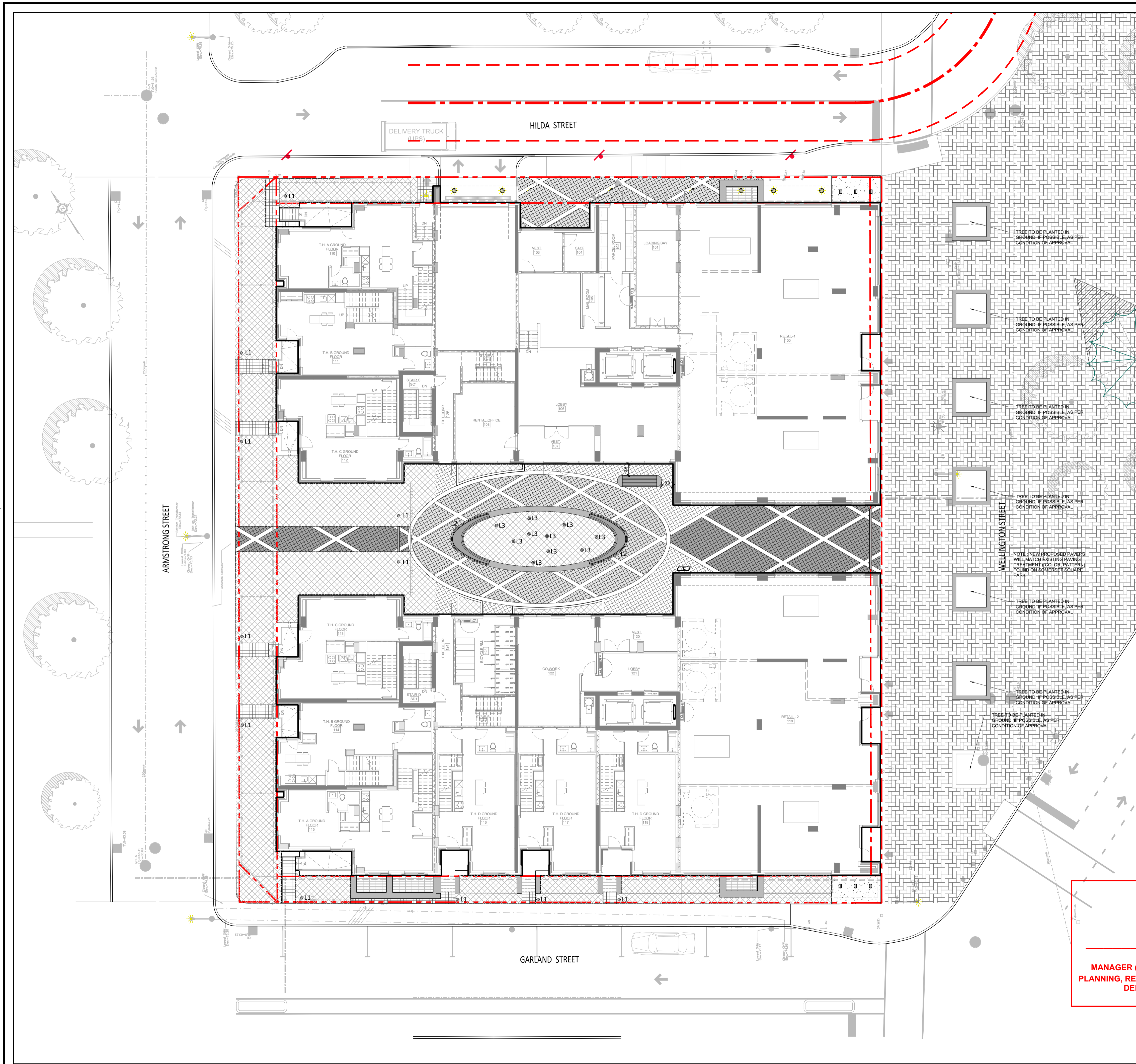
Scale: 1:150

Andrew McCreight
**ANDREW MCCREIGHT
 MANAGER (A), DEVELOPMENT REVIEW CENTRAL
 PLANNING, REAL ESTATE & ECONOMIC DEVELOPMENT
 DEPARTMENT, CITY OF OTTAWA**

APPROVED
 By Andrew McCreight at 9:20 am, Jun 15, 2023

Designed by: S. Gallant	Sheet No.:
Drawn by: X. Benjamin	AP-30
Approved by: S. Gallant	
Date: November 2020	
Plan No: 18841	

D017-12-21-0228



LEGENDE

--- Lot limit
 - - - Intervention limit

LIGHTING

Code	Qty	Model
L1	11	BOLLARD Model: 77743 Bollard from BEGA Lighting Colour: BEGA Black Fixing: As specified by supplier
L2	15m	LED STRIP LIGHTING Model: To be determined Colour: To be determined Fixing: To be determined
L3	10	GARDEN FLOODLIGHT Model: 84 067 Floodlight with earth spike from BEGA Lighting Colour: BEGA Black Fixing: As specified by supplier

IRRIGATION

Planting areas to be irrigated. Drip irrigation system.

Client

ML Wellington Realty Investments Inc.
 C/O MIL DEVOO INC
 651, Churchill Avenue N
 Ottawa (Ontario) K1Z 5G2
 Tel: 613-666-6319

Revisions

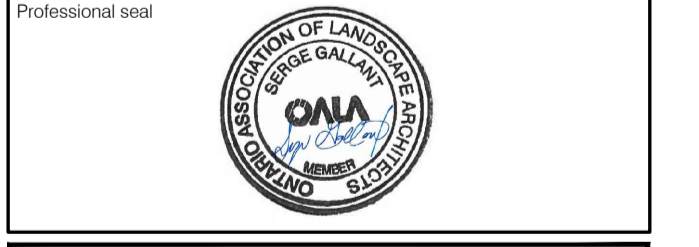
No	Description	Appr.	Date
1	Preliminary issue	S.G.	11/15/21
2	Site Plan Control	S.G.	12/10/21
3	Site Plan Control	S.G.	12/13/21
4	Site Plan Control	S.G.	12/15/21
5	Site Plan Control	S.G.	03/18/22
6	Site Plan Control	S.G.	06/23/22
7	Coordination plans - 99%	S.G.	08/26/22
8	Site Plan Control	S.G.	12/13/22
9	Site Plan Control	S.G.	02/24/23
10	Site Plan Control	S.G.	03/13/23
11	Site Plan Control - REVISION 01	S.G.	03/29/23
12	Site Plan Control - REVISION 02	S.G.	04/24/23
13	Site Plan Control - REVISION 03	S.G.	05/09/23

DO NOT USE FOR CONSTRUCTION

- Notes :**
- The Contractor must verify all site existing conditions before beginning the work and inform the Project Director of any errors, omissions or contradictions.
 - Existing grades indicated on the plan come from the survey provided by the owner.
 - The Contractor must not cut down any existing vegetation without the approval of the Project Director.
 - Implantation of the works on site must be approved by the Project Director.
 - The Contractor must use the CAD file for implantation of all work.
 - The contractor must verify the amounts specified in the schedule and notify the landscape architect of any errors, omissions or contradictions before the close of the bid.

PROJET | PAYSAGE

24 Mont-Royal O. Bureau 801 Montréal Québec H2T 2S2
 T: 514.849.7700 F: 514.849.2027 info@projetpaysage.com



Project name

**979, WELLINGTON
 D017-12-21-0228**

Drawing title

LIGHTING AND IRRIGATION PLAN

0 5 10 1:150

Andrew McCreight

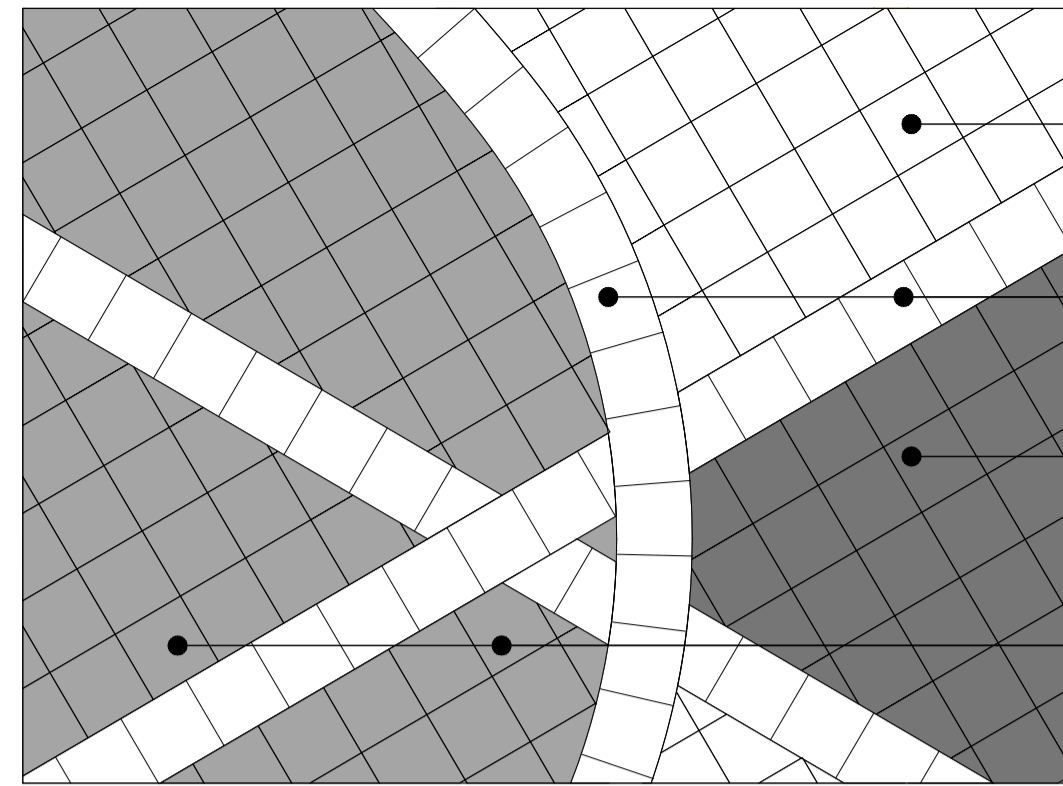
**ANDREW MCCREIGHT
 MANAGER (A), DEVELOPMENT REVIEW CENTRAL
 PLANNING, REAL ESTATE & ECONOMIC DEVELOPMENT
 DEPARTMENT, CITY OF OTTAWA**

APPROVED
 By Andrew McCreight at 9:20 am, Jun 15, 2023

Designed by: S. Gallant
 Drawn by: X. Benjamin
 Approved by: S. Gallant
 Date: November 2020
 Plan No: 18841

Sheet No: **AP-40**

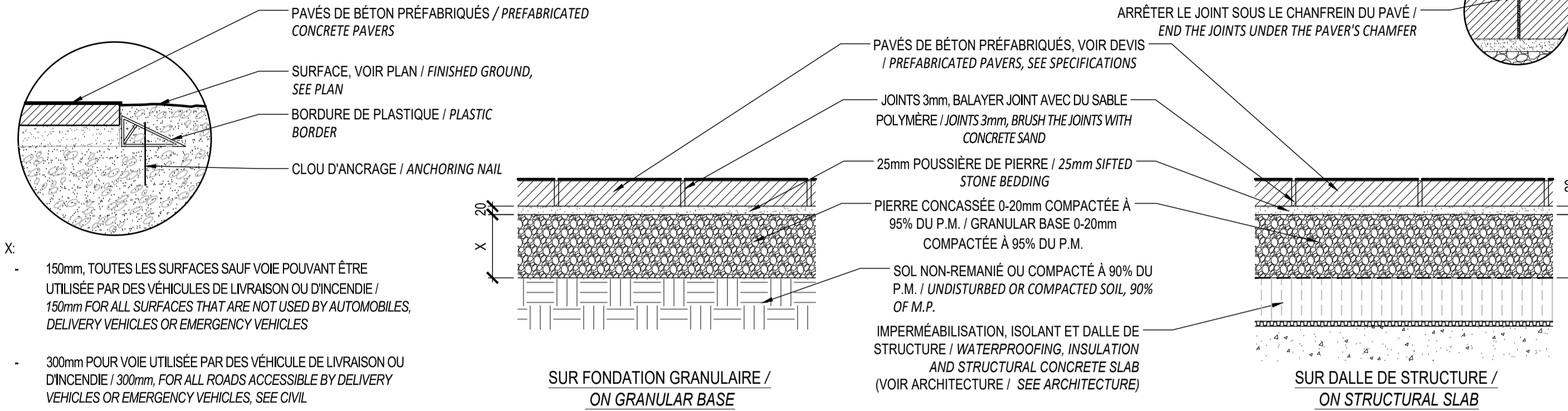
D017-12-21-0228



VUE EN PLAN / PLAN VIEW
ÉCHELLE 1:30 / SCALE 1:30

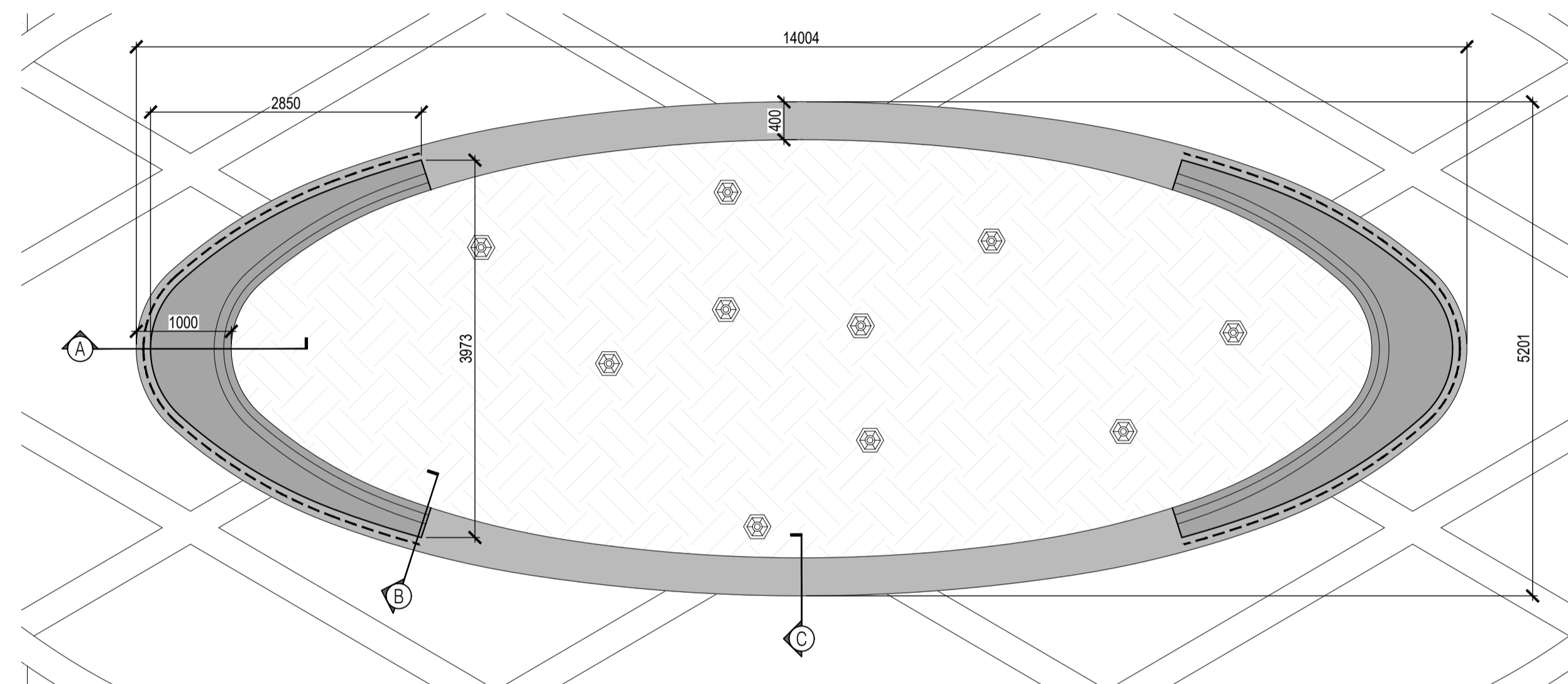
1 PAVÉS DE BÉTON PRÉFABRIQUÉS TYPE / TYPICAL PREFABRICATED PAVERS
Échelle / Scale 1:10

NOTE:
- SE RÉFÉRER AUX SPÉCIFICATIONS POUR LES DIRECTIVES D'INSTALLATION / REFER TO SPECIFICATIONS FOR INSTALLATION GUIDELINES
- LA LARGEUR DE PAVÉS NE PEUT PAS ÊTRE INFÉRIEURE À 1/3 DE LA LONGUEUR INITIALE UNE FOIS COUPÉE / THE WIDTH OF THE PAVERS MAY NOT BE LESS THAN 1/3 OF THE LENGTH ONCE CUT



SUR FONDATION GRANULAIRE /
ON GRANULAR BASE

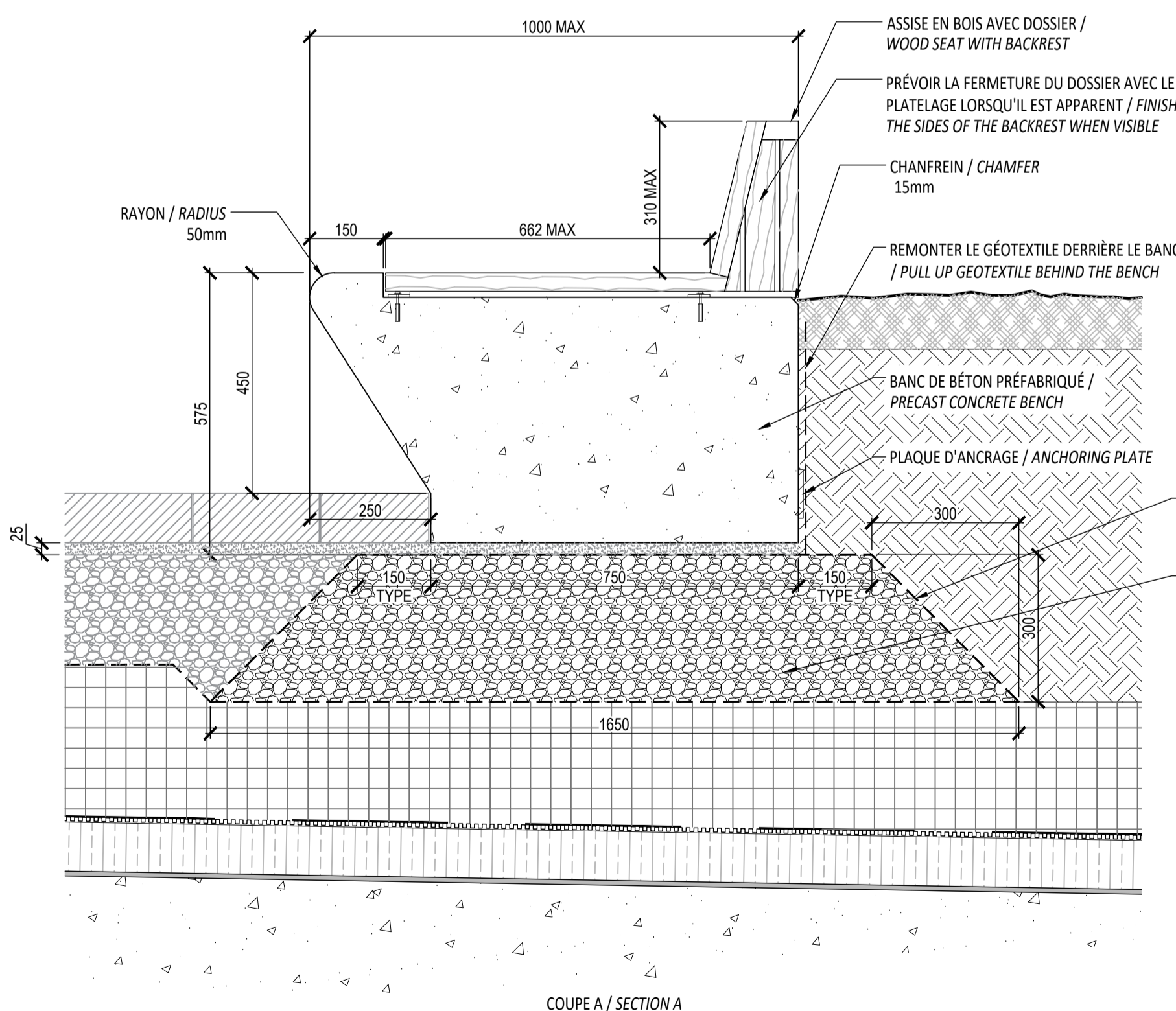
SUR DALLE DE STRUCTURE /
ON STRUCTURAL SLAB



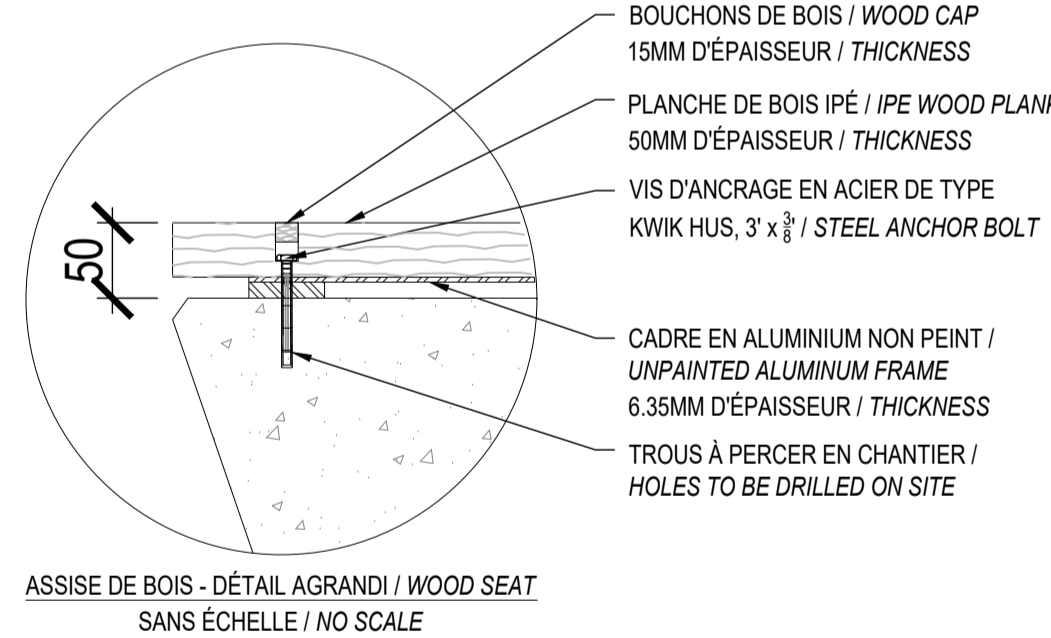
VUE EN PLAN / PLAN VIEW
ÉCHELLE 1:50 / SCALE 1:50

NOTES:

- BÉTON COULÉ EN USINE / CONCRETE CAST AT FACTORY;
- LE BANC DE BÉTON PRÉFABRIQUÉ SERA DE COULEUR _____ (FOURNIR UN ÉCHANTILLON POUR APPROBATION) / CONCRETE BENCH COLOR WILL BE _____ (PROVIDE SAMPLE FOR APPROBATION);
- LES SURFACES APPARENTES DOIVENT ÊTRE FINIES AU JET DE SABLE LÉGER / CONCRETE SURFACES MUST BE FINISHED WITH A LIGHT SANDBLAST;
- INSTALLATION SELON LES RECOMMANDATIONS DU FABRICANT / INSTALLATION ACCORDING TO MANUFACTURER'S RECOMMENDATIONS;
- L'ENTREPRENEUR DOIT FOURNIR POUR APPROBATION DES DESSINS D'ATELIER DÉTAILLÉS, CÔTÉS, SCÉLLÉS ET SIGNÉS PAR INGÉNIEUR CERTIFIÉ / CONTRACTOR MUST PROVIDE DRAWINGS SEALED AND SIGNED BY A CERTIFIED ENGINEER;
- PRÉVOIR EN USINE LES ÉLÉMENTS D'ANCRAGE AUX MODULES AFIN DE LES CONNECTER LES UNS AUX AUTRES. LA FIXATION NE DOIT PAS ÊTRE APPARENTE. FAIRE APPROUVER LE MODE DE FIXATION PAR LE DIRECTEUR DE PROJET. PRÉVOIR UNE ENCAVURE DANS LES MODULES DE BÉTON / PROVIDE, AT THE FACTORY, THE ANCHORING ELEMENTS IN ORDER TO CONNECT THE CONCRETE MODULES TO ONE ANOTHER. THE ATTACHMENT MUST NOT BE APPARENT. HAVE THE FIXING MODE APPROVED BY THE PROJECT MANAGER. PROVIDE A CAVURE IN THE CONCRETE MODULES;
- PRÉVOIR UNE PENTE DE 1% SUR TOUTES LES SURFACES HORIZONTALES POUR PERMETTRE L'ÉCOULEMENT DE L'EAU / LEVEL ALL HORIZONTAL SURFACES AS TO KEEP A 1% SLOPE TO ALLOW WATER DRAINAGE

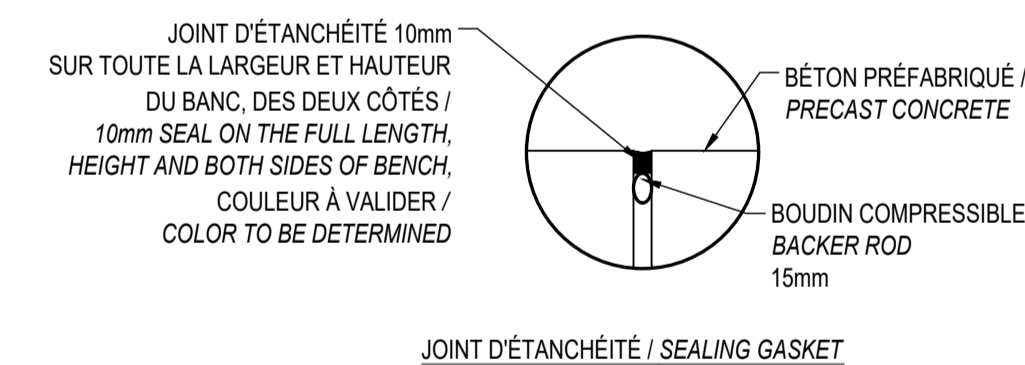


COUPE A / SECTION A

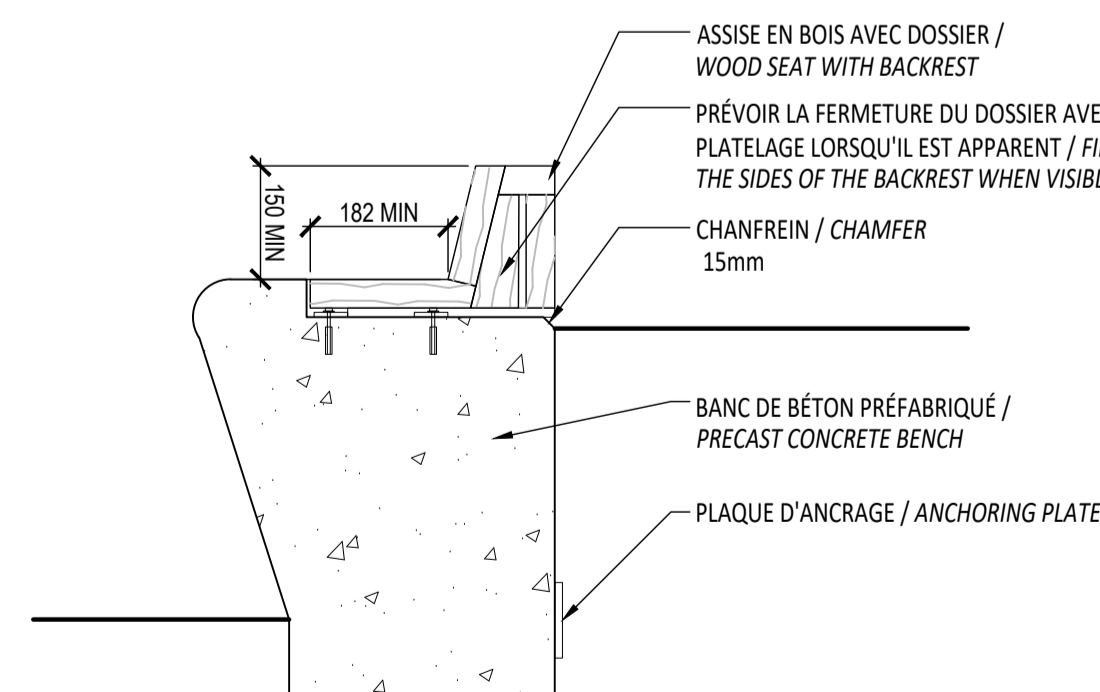


ASSISE DE BOIS - DÉTAIL AGRANDI / WOOD SEAT
SANS ÉCHELLE / NO SCALE

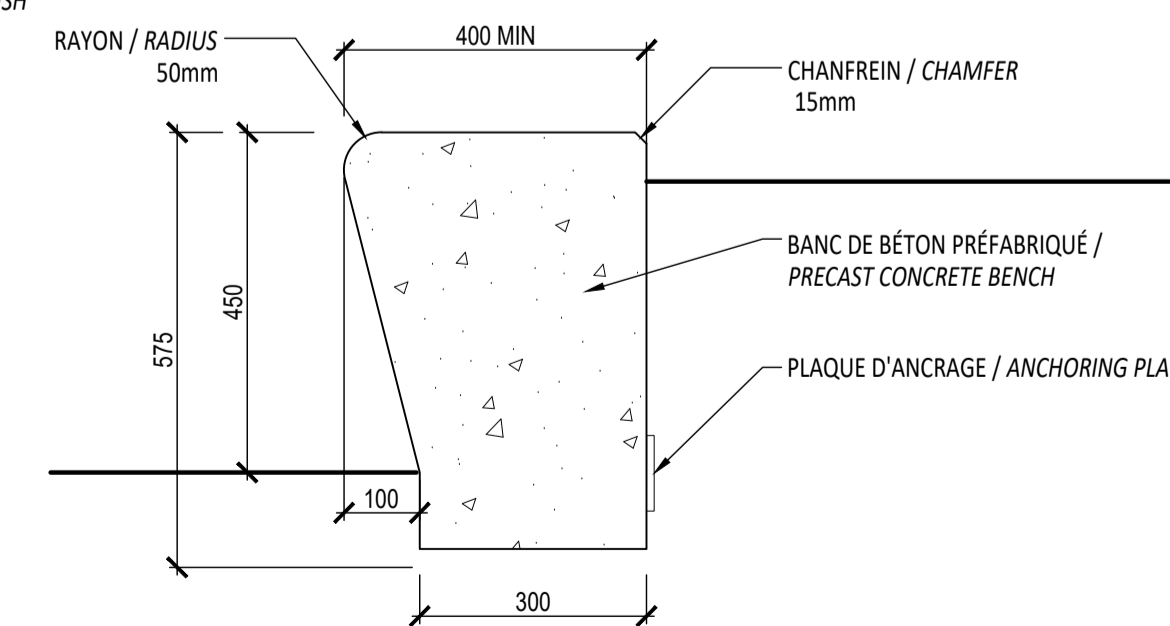
PLAQUE D'ANCRAGE / ANCHORING PLATE



JOINT D'ÉTANCHÉITÉ / SEALING GASKET



COUPE B / SECTION B



COUPE C / SECTION C

10 BANC MODULAIRE DE BÉTON PRÉFABRIQUÉ / MODULAR PRECAST CONCRETE BENCH
Échelle / Scale 1:10

No	Description	Appr.	Date
1	Preliminary issue	S.G.	11/15/21
2	Site Plan Control	S.G.	12/10/21
3	Site Plan Control	S.G.	12/13/21
4	Site Plan Control	S.G.	12/15/21
5	Site Plan Control	S.G.	03/18/22
6	Site Plan Control	S.G.	06/23/22
7	Coordination plans - 99%	S.G.	08/26/22
8	Site Plan Control	S.G.	12/13/22
9	Site Plan Control	S.G.	02/24/23
10	Site Plan Control	S.G.	03/13/23
11	Site Plan Control - REVISION 01	S.G.	03/29/23
12	Site Plan Control - REVISION 02	S.G.	04/24/23
13	Site Plan Control - REVISION 03	S.G.	05/09/23

DO NOT USE FOR
CONSTRUCTION

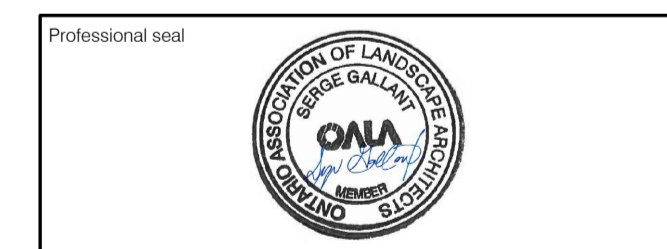
Andrew McCreight
ANDREW MCCREIGHT
MANAGER (A), DEVELOPMENT REVIEW CENTRAL
PLANNING, REAL ESTATE & ECONOMIC DEVELOPMENT
DEPARTMENT, CITY OF OTTAWA

APPROVED
By Andrew McCreight at 9:20 am, Jun 15, 2023

- Notes :
- The Contractor must verify all site existing conditions before beginning the work and inform the Project Director of any errors, omissions or contradictions.
 - Existing grades indicated on the plan come from the survey provided by the owner.
 - The Contractor must not cut down any existing vegetation without the approval of the Project Director.
 - Implantation of the works on site must be approved by the Project Director.
 - The Contractor must use the CAD file for implantation of all work.
 - The contractor must verify the amounts specified in the schedule and notify the landscape architect of any errors, omissions or contradictions before the close of the bid.

PROJET | PAYSAGE

24 Mont-Royal O. Bureau 801. Montréal Québec H2T 2S2
T: 514.849.7700 F: 514.849.2027 info@projetpaysage.com



Project name
**979, WELLINGTON
D017-12-21-0228**

Drawing title
CONSTRUCTION DETAILS

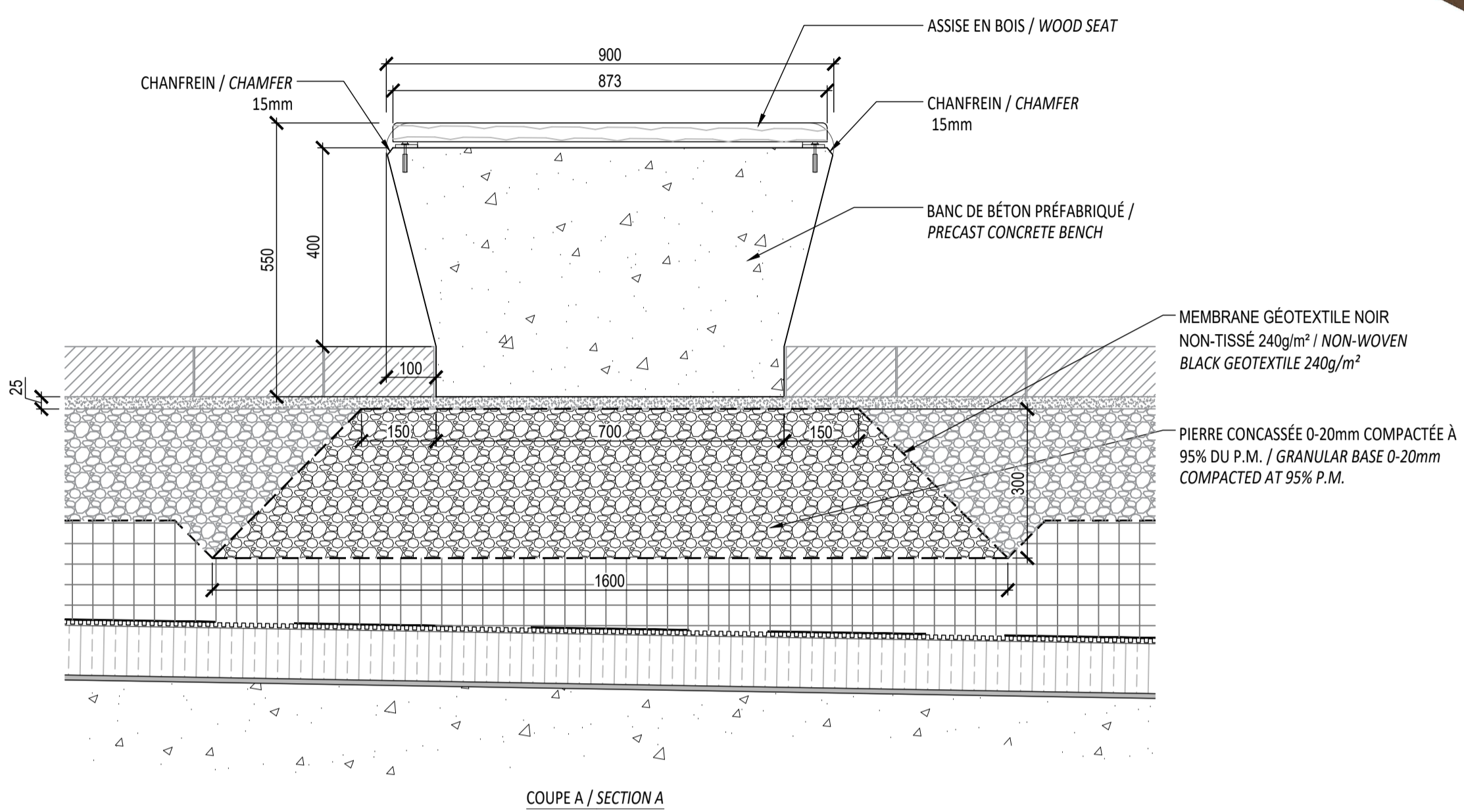
Indicated scales

Designed by: S. Gallant
Drawn by: X. Benjamin
Approved by: S. Gallant
Date: November 2020
Project No: 18841
Sheet No: **AP-50**

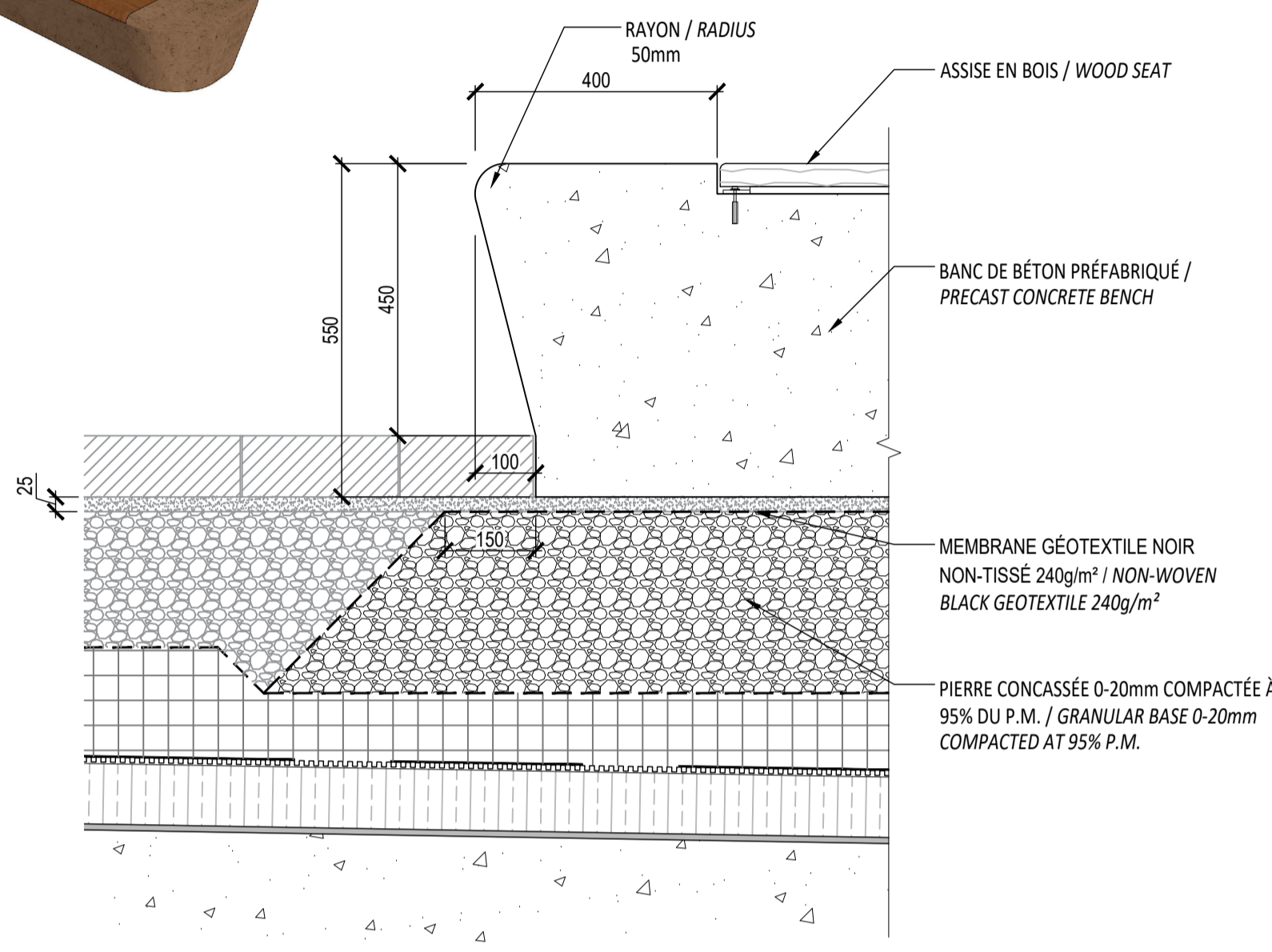
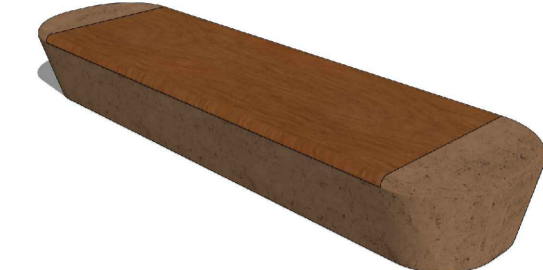
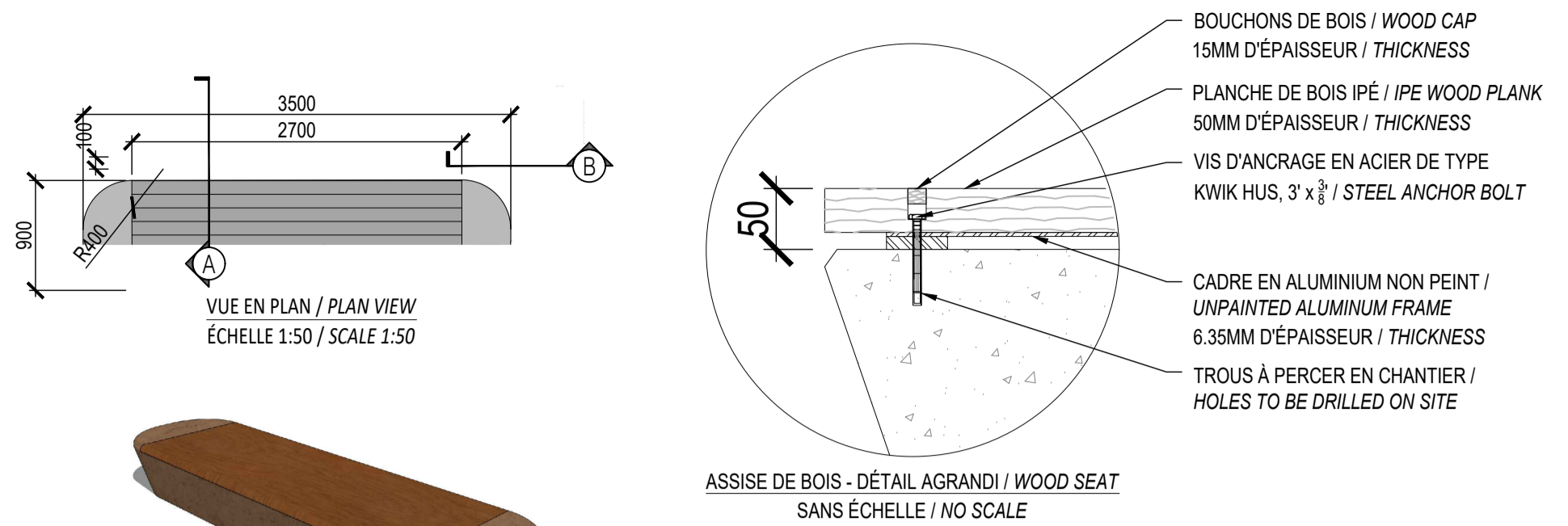
D017-12-21-0228

NOTES:

- BÉTON COULÉ EN USINE / CONCRETE CAST AT FACTORY.
- LE BANC DE BÉTON PRÉFABRIQUÉ SERA DE COULEUR _____ (FOURNIR UN ÉCHANTILLON POUR APPROBATION) / CONCRETE BENCH COLOR WILL BE _____ (PROVIDE SAMPLE FOR APPROBATION).
- LES SURFACES APPARENTES DOIVENT ÊTRE FINIES AU JET DE SABLE LÉGER / CONCRETE SURFACES MUST BE FINISHED WITH A LIGHT SANDBLAST.
- INSTALLATION SELON LES RECOMMANDATIONS DU FABRICANT / INSTALLATION ACCORDING TO MANUFACTURER'S RECOMMENDATIONS.
- L'ENTREPRENEUR DOIT FOURNIR POUR APPROBATION DES DESSINS D'ATELIER DÉTAILLÉS, CÔTÉS, SCÉLLÉS ET SIGNÉS PAR INGÉNIEUR CERTIFIÉ / CONTRACTOR MUST PROVIDE DRAWINGS SEALED AND SIGNED BY A CERTIFIED ENGINEER.
- PRÉVOIR EN USINE LES ÉLÉMENTS D'ANCRAGE AUX MODULES AFIN DE LES CONNECTER LES UNS AUX AUTRES. LA FIXATION NE DOIT PAS ÊTRE APPARENTE. FAIRE APPROUVER LE MODE DE FIXATION PAR LE DIRECTEUR DE PROJET. PRÉVOIR UNE ENCAVURE DANS LES MODULES DE BÉTON / PROVIDE, AT THE FACTORY, THE ANCHORING ELEMENTS IN ORDER TO CONNECT THE CONCRETE MODULES TO ONE ANOTHER. THE ATTACHMENT MUST NOT BE APPARENT. HAVE THE FIXING MODE APPROVED BY THE PROJECT MANAGER. PROVIDE A CAVURE IN THE CONCRETE MODULES.
- PRÉVOIR UNE PENTE DE 1% SUR TOUTES LES SURFACES HORIZONTALES POUR PERMETTRE L'ÉCOULEMENT DE L'EAU / LEVEL ALL HORIZONTAL SURFACES AS TO KEEP A 1% SLOPE TO ALLOW WATER DRAINAGE



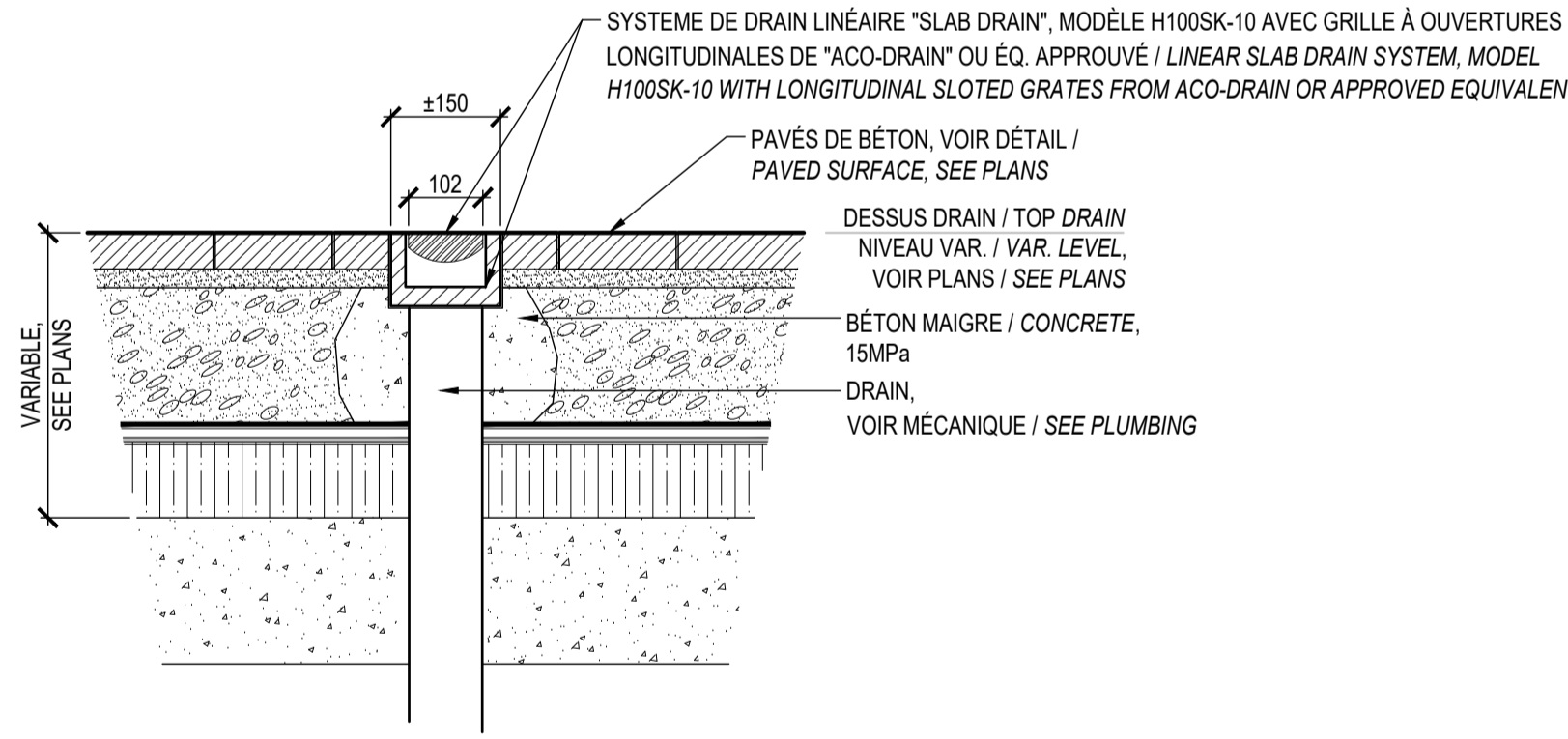
11 BANC DE BÉTON PRÉFABRIQUÉ / PRECAST CONCRETE BENCH
Echelle / Scale 1:10



COUPE B / SECTION B

NOTES:

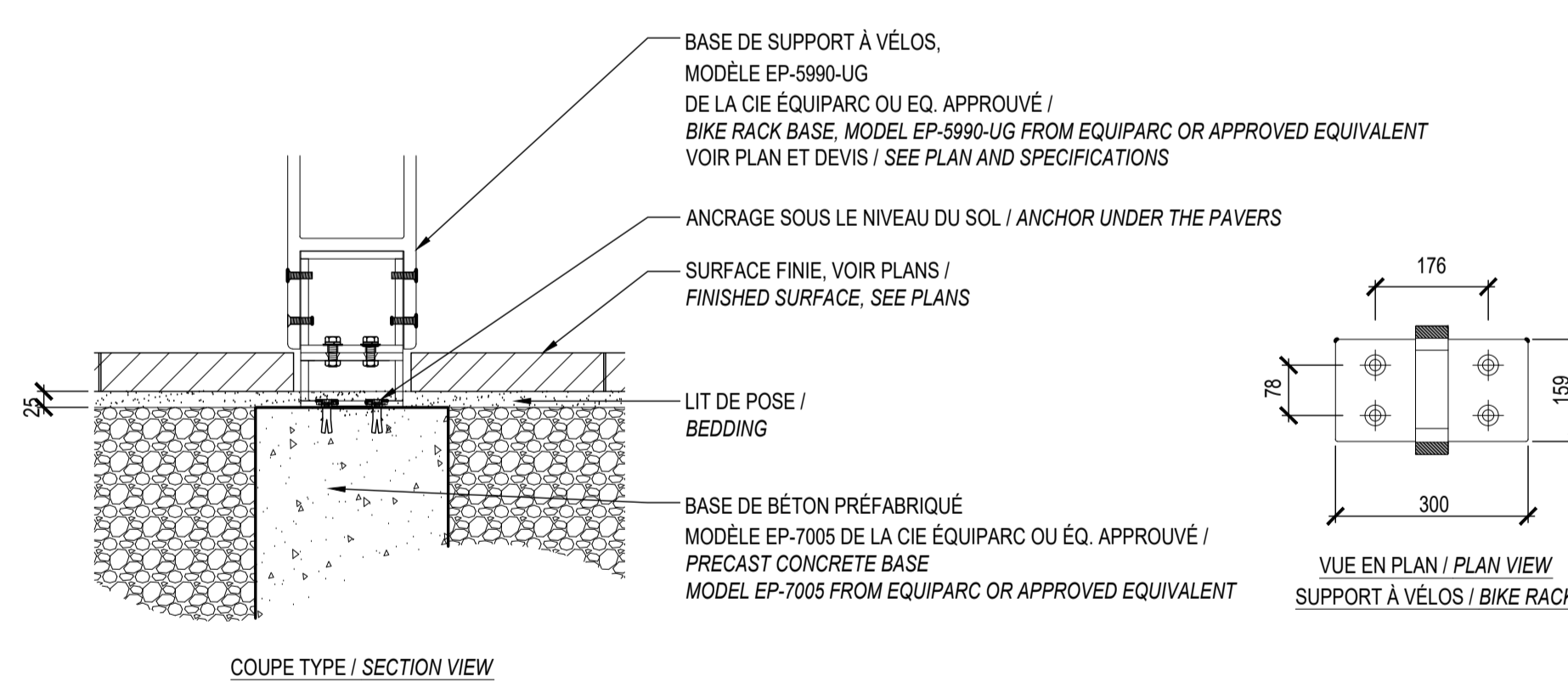
- METTRE EN PLACE LES CONDUITES VERTICALES ET LES TÊTES DE PUISARDS SUR LE PANNEAU DRAINANT DE MANIÈRE À ASSURER L'ÉCOULEMENT DES EAUX SUR LA DALLE VERS LE DRAIN DE TOIT. / INSTALL VERTICAL PIPES AND DRAIN HEADS ON DRAINAGE MEMBRANE AS TO ASSURE WATER DRAINAGE TO THE ROOF DRAINS.



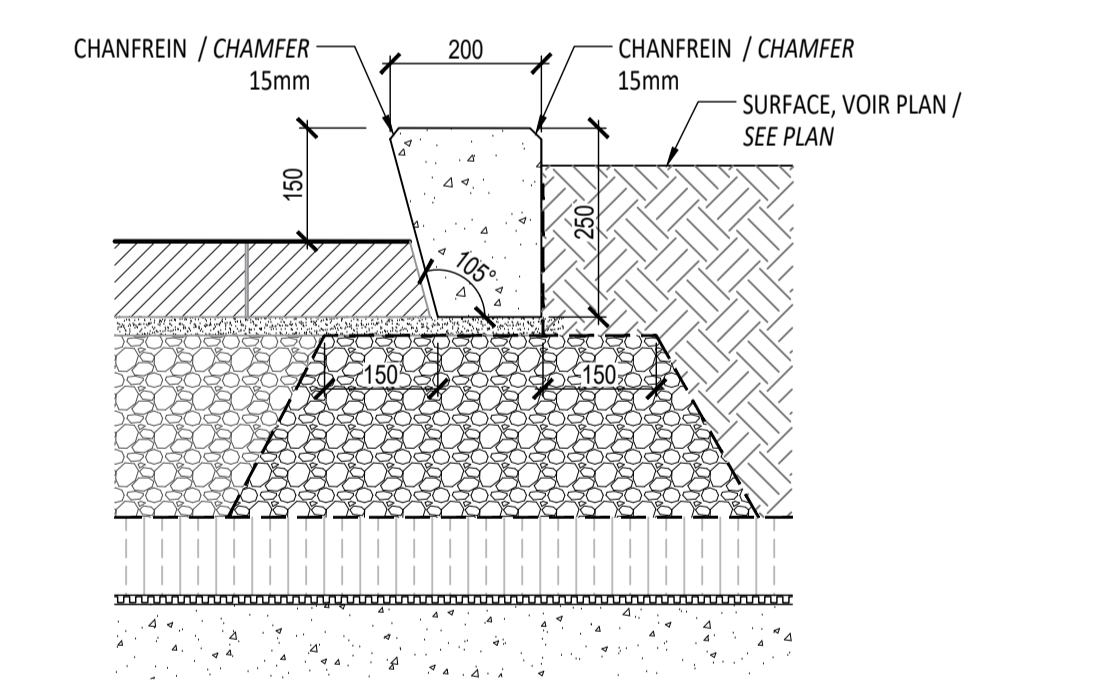
32 CANIVEAU / TRENCH DRAIN
Echelle 1:10 / Scale 1:10

NOTES:

- PRÉVOIR ANCRAGE ET QUINCAILLERIE ANTI-VOL / PROVIDE ANTI-THEFT ANCHORING AND HARDWARE
- INSTALLATION SELON LES RECOMMANDATIONS DU FOURNISSEUR / INSTALL ACCORDING TO MANUFACTURER'S RECOMMENDATIONS



31 SUPPORT À VÉLOS / BIKE RACKS
Echelle 1:10 / Scale 1:10

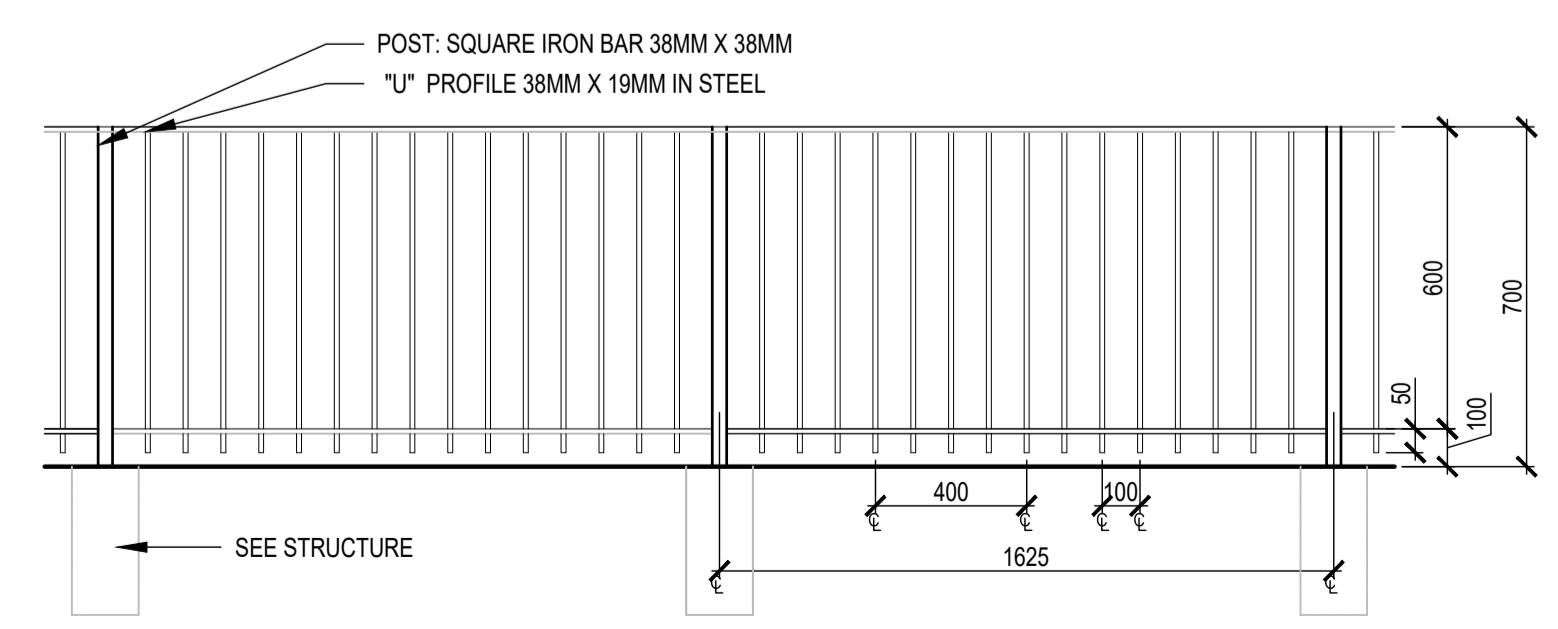


12 BORDURE DE BÉTON PRÉFABRIQUÉ / PRECAST CONCRETE CURB
Echelle / Scale 1:10

Andrew McCreight

ANDREW MCCREIGHT
MANAGER (A), DEVELOPMENT REVIEW CENTRAL
PLANNING, REAL ESTATE & ECONOMIC DEVELOPMENT
DEPARTMENT, CITY OF OTTAWA

APPROVED
By Andrew McCreight at 9:20 am, Jun 15, 2023



33 ROUGH IRON DECORATIVE FENCE
Echelle / Scale 1:10

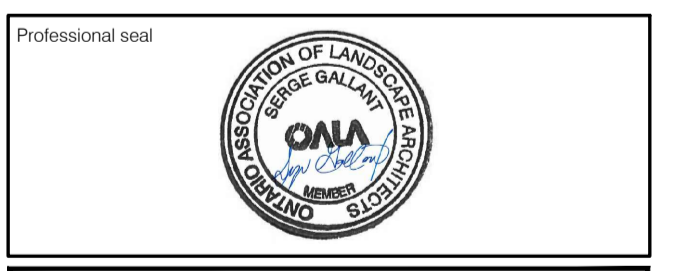
No	Description	Appr.	Date
1	Preliminary issue	S.G.	11/15/21
2	Site Plan Control	S.G.	12/10/21
3	Site Plan Control	S.G.	12/13/21
4	Site Plan Control	S.G.	12/15/21
5	Site Plan Control	S.G.	03/18/22
6	Site Plan Control	S.G.	06/23/22
7	Coordination plans - 99%	S.G.	08/26/22
8	Site Plan Control	S.G.	12/13/22
9	Site Plan Control	S.G.	02/24/23
10	Site Plan Control	S.G.	03/13/23
11	Site Plan Control - REVISION 01	S.G.	03/29/23
12	Site Plan Control - REVISION 02	S.G.	04/24/23
13	Site Plan Control - REVISION 03	S.G.	05/09/23

DO NOT USE FOR CONSTRUCTION

- Notes:**
- The Contractor must verify all site existing conditions before beginning the work and inform the Project Director of any errors, omissions or contradictions.
 - Existing grades indicated on the plan come from the survey provided by the owner.
 - The Contractor must not cut down any existing vegetation without the approval of the Project Director.
 - Implantation of the works on site must be approved by the Project Director.
 - The Contractor must use the CAD file for implantation of all work.
 - The contractor must verify the amounts specified in the schedule and notify the landscape architect of any errors, omissions or contradictions before the close of the bid.

PROJET | PAYSAGE

24 Mont-Royal O. Bureau 801, Montréal Québec H2T 2S2
T: 514.849.7700 F: 514.849.2027 info@projetpaysage.com



Project name
979, WELLINGTON
D017-12-21-0228

Drawing title
CONSTRUCTION DETAILS

Indicated scales

Designed by: S. Gallant
Drawn by: X. Benjamin
Approved by: S. Gallant
Date: November 2020
Project No: 18841

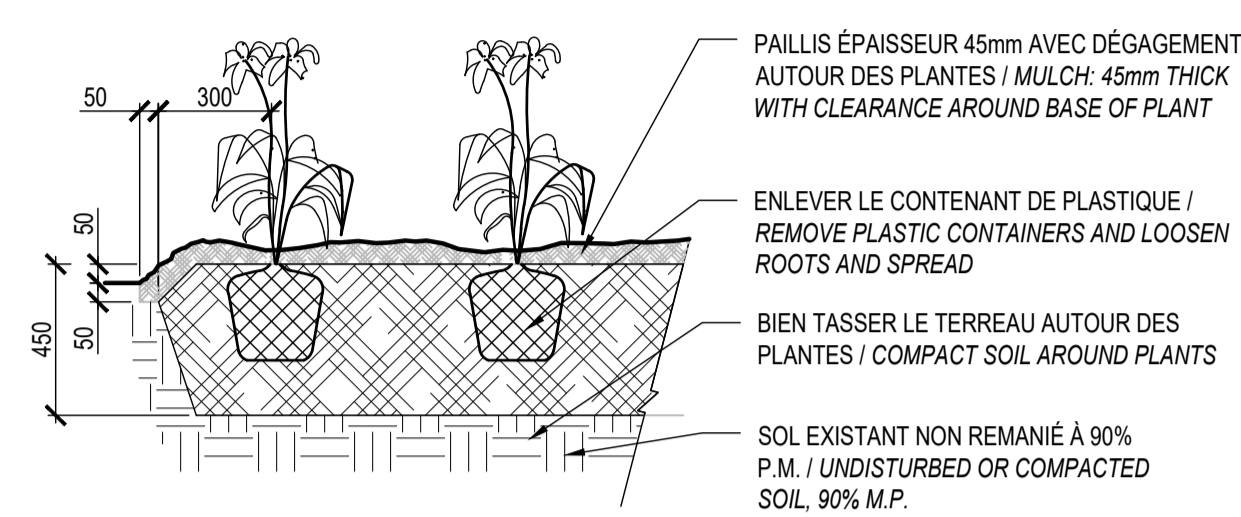
Sheet No.: **AP-51**

D017-12-21-0228

No	Description	Appr.	Date
1	Preliminary issue	S.G.	11/15/21
2	Site Plan Control	S.G.	12/10/21
3	Site Plan Control	S.G.	12/13/21
4	Site Plan Control	S.G.	12/15/21
5	Site Plan Control	S.G.	03/18/22
6	Site Plan Control	S.G.	06/23/22
7	Coordination plans - 99%	S.G.	08/26/22
8	Site Plan Control	S.G.	12/13/22
9	Site Plan Control	S.G.	02/24/23
10	Site Plan Control	S.G.	03/13/23
11	Site Plan Control - REVISION 01	S.G.	03/29/23
12	Site Plan Control - REVISION 02	S.G.	04/24/23
13	Site Plan Control - REVISION 03	S.G.	05/09/23

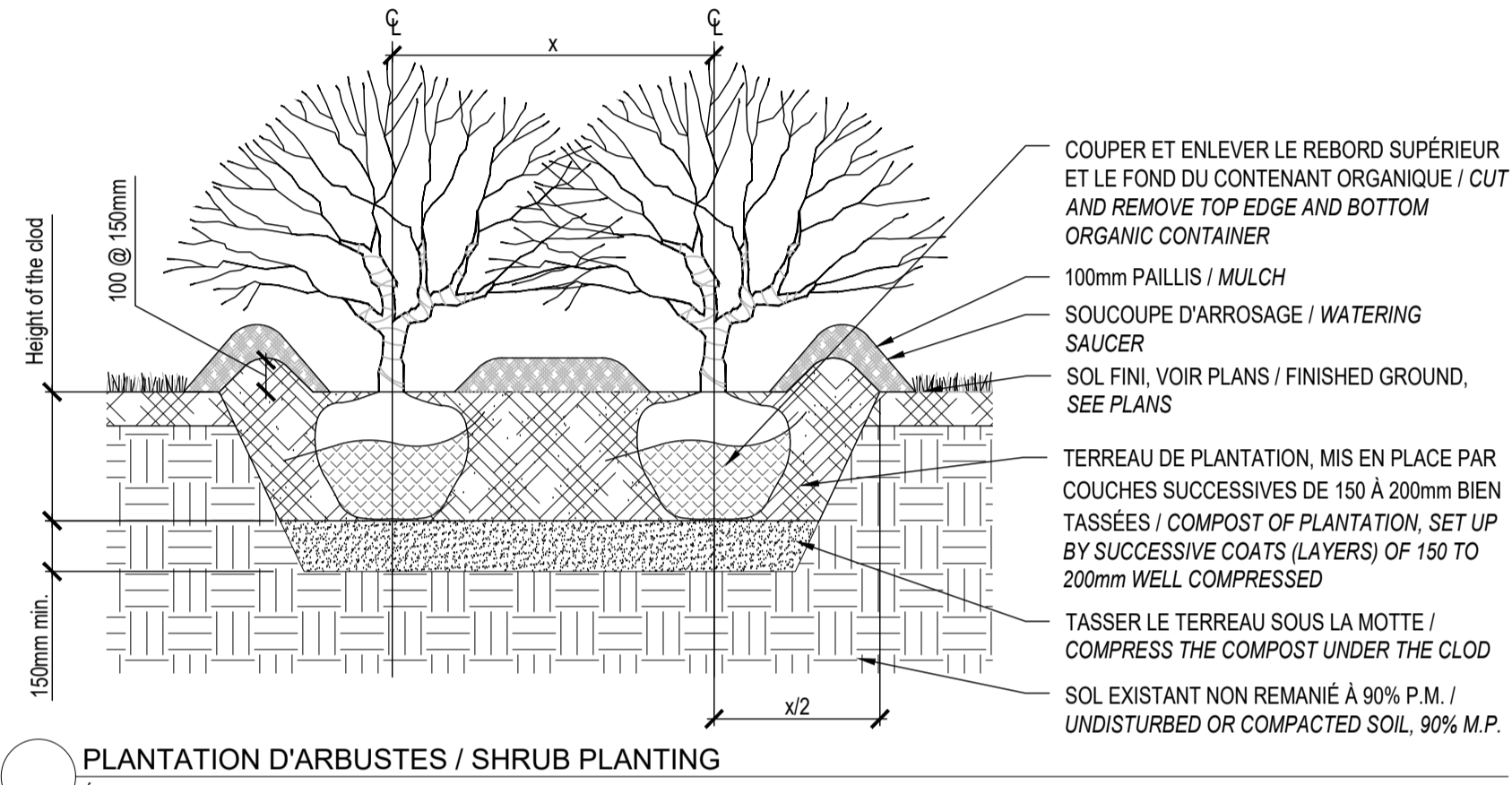
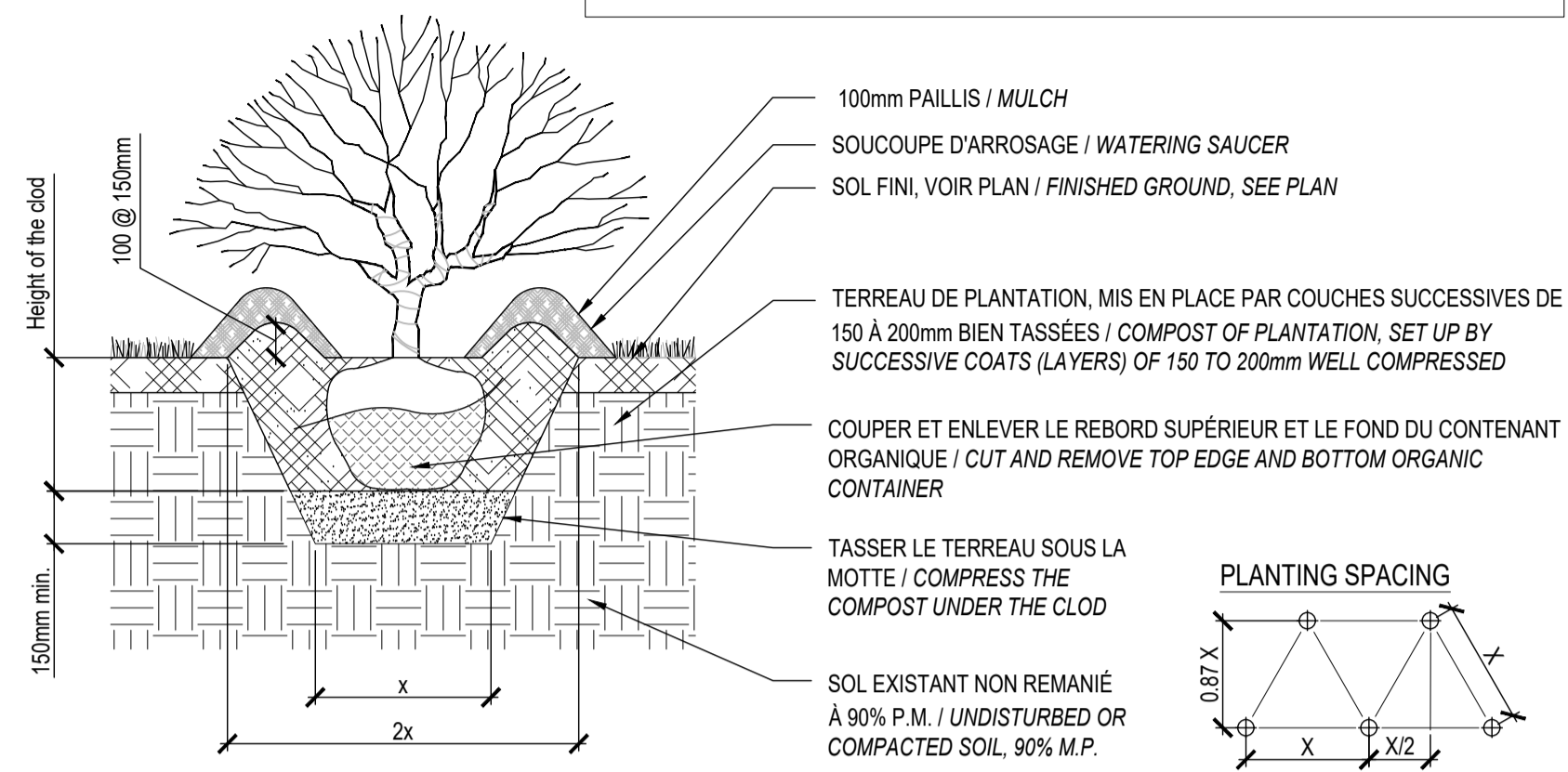
DO NOT USE FOR CONSTRUCTION

NOTE:
- LES VIVACES SONT TOUJOURS PLANTÉES EN QUINCONCE (X: VOIR LISTE DE PLANTATION ET PLANS) / PERENNIALS ARE ALWAYS PLANTED IN STAGGERED ROWS (X: SEE LISTS OF PLANTING AND PLANS)
- ARROSER ABONDAMMENT LE SOL AUSSITÔT APRÈS LA PLANTATION / SPRAY THE GROUND WITH WATER IMMEDIATELY AFTER PLANTING



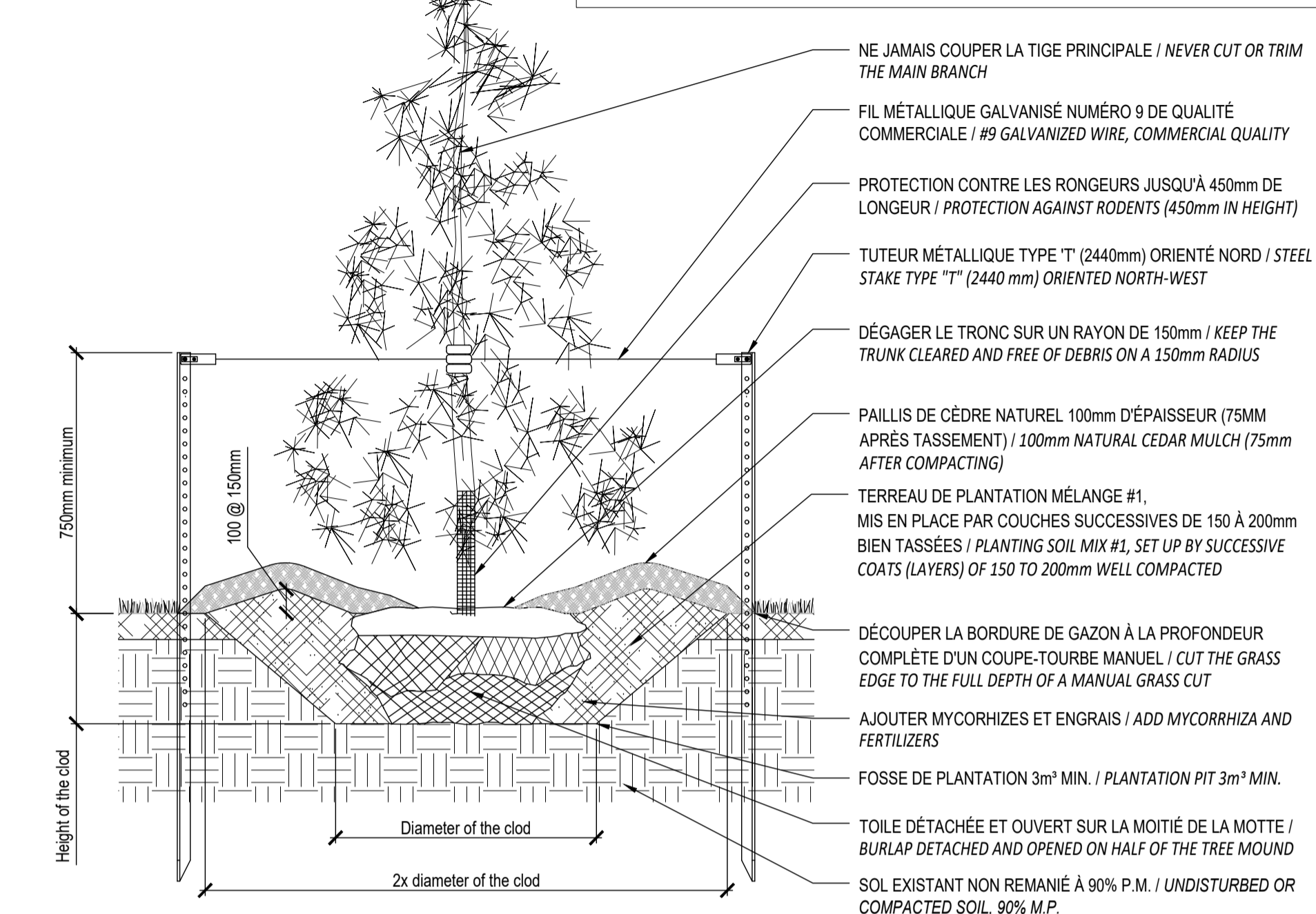
PLANTATION DE VIVACES OU GRAMINÉES / PERENNIAL PLANTING
Echelle / Scale 1:20

NOTE:
- LA FOSSE DE PLANTATION DOIT AVOIR UN DIAMÈTRE DE 500mm MINIMUM / THE PLANTING PIT MUST HAVE A DIAMETER OF 500mm MINIMUM.



PLANTATION D'ARBUSTES / SHRUB PLANTING
Echelle / Scale 1:20

DISPOSITION DES TUTEURS / DISPOSITION OF TUTORS

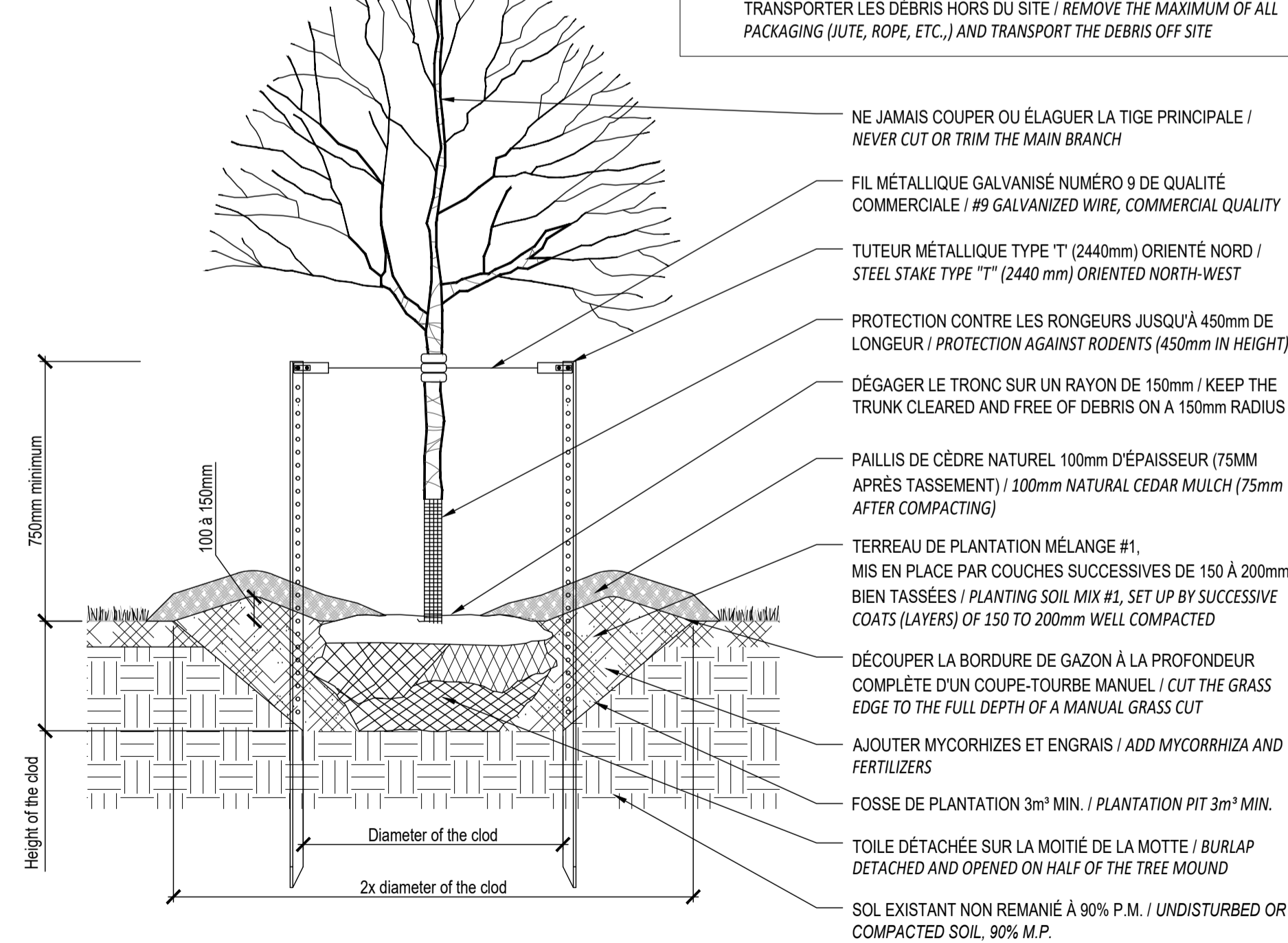


PLANTATION D'ARBRES CONFÈRE / CONIFEROUS TREE PLANTING
Echelle / Scale 1:20

Andrew McCreight
ANDREW MCCREIGHT
MANAGER (A), DEVELOPMENT REVIEW CENTRAL PLANNING, REAL ESTATE & ECONOMIC DEVELOPMENT DEPARTMENT, CITY OF OTTAWA

APPROVED
By Andrew McCreight at 9:20 am, Jun 15, 2023

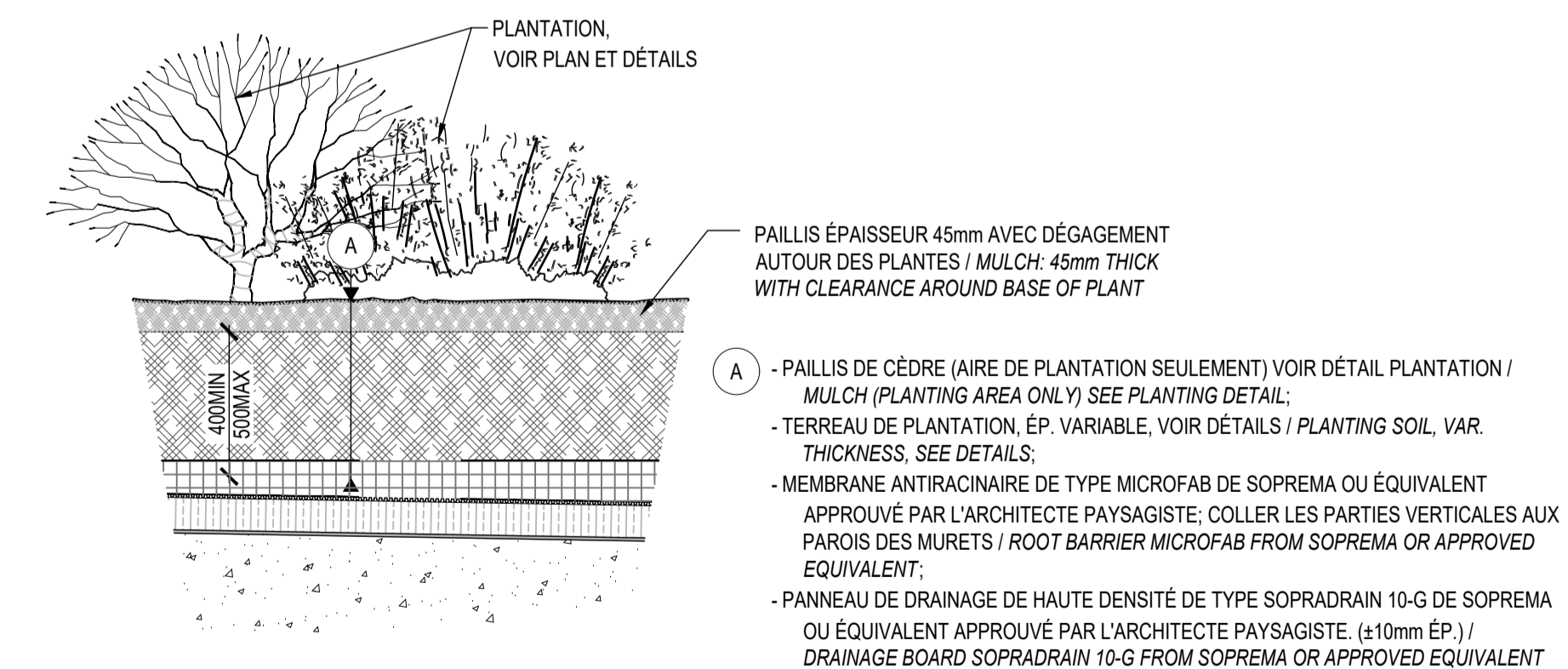
DISPOSITION DES TUTEURS / DISPOSITION OF TUTORS



PLANTATION D'ARBRE FEUILLU
Scale 1:20

NOTES:

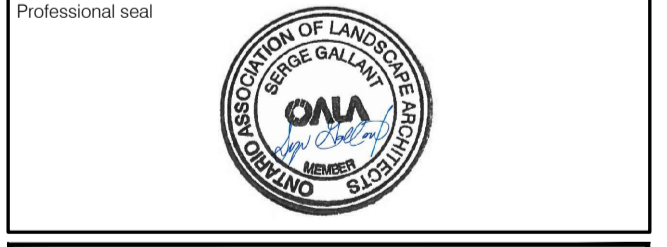
- IT IS THE RESPONSIBILITY OF THE CONTRACTOR TO VALIDATE THE THICKNESS OF THE SOIL WITH THE BUILDING STRUCTURE
- WITH THE EXCEPTION OF TREES, THERE MUST BE A MAXIMUM OF 500MM OF SOIL AND/ OR GRANULAR FOUNDATION ON THE CONCRETE SLAB. FILL ALL SPACE ABOVE THE REQUIRED SOIL AND/ OR GRANULAR FOUNDATION THICKNESS WITH RIGID INSULATION TO REACH THE FINISH GRADE INDICATED ON THE PLANS.
- MAKE SURE TO HAVE A MINIMUM AND MAXIMUM OF 1000MM OF SOIL. FILL ALL SPACE ADJACENT TREE WITH RIGID INSULATION, AS TO RESPECT THE MAXIMUM OF 500MM OF SOIL.
- WHEN PLANTING SHRUBS, MAKE SURE TO HAVE A MINIMUM OF 500MM OF SOIL.
- WHEN PLANTING PERENNIALS AND/ OR ORNAMENTAL GRASSES, MAKE SURE TO HAVE A MINIMUM OF 500MM OF SOIL.
- FOR SOD, ENSURE YOU HAVE A MINIMUM OF 150MM OF SOIL.
- REGARDLESS OF THE TYPE OF SURFACE (PLANTING, PAVERS, EDGES OR WALLS), INSTALL ALL THE DRAINAGE PANEL ON THE ENTIRE SURFACE OF THE SLAB AND IN A CONTINUOUS MANNER.



COUPE TYPE - PLANTATION ARBUSTES, VIVACES ET/OU GRAMINÉES SUR DALLE / SHRUB AND/OR PERENNIAL PLANTING ON SLAB
PLANTATION SUR DALLE / PLANTING ON CONCRETE SLAB
Echelle / Scale 1:20

- Notes:**
- The Contractor must verify all site existing conditions before beginning the work and inform the Project Director of any errors, omissions or contradictions.
 - Existing grades indicated on the plan come from the survey provided by the owner.
 - The Contractor must not cut down any existing vegetation without the approval of the Project Director.
 - Implantation of the works on site must be approved by the Project Director.
 - The Contractor must use the CAD file for implantation of all work.
 - The contractor must verify the amounts specified in the schedule and notify the landscape architect of any errors, omissions or contradictions before the close of the bid.

PROJET | PAYSAGE
24 Mont-Royal O. Bureau 801, Montréal Québec H2T 2S2
T: 514.849.7700 F: 514.849.2027 info@projetpaysage.com



Project name
979, WELLINGTON
D017-12-21-0228

Drawing title
PLANTING DETAILS

Indicated scales

Designed by: S. Gallant
Drawn by: X. Benjamin
Approved by: S. Gallant
Date: November 2020
Plan No: 18841

Sheet No.: **AP-52**

D017-12-21-0228

No	Description	Appr.	Date
1	Preliminary issue	S.G.	11/15/21
2	Site Plan Control	S.G.	12/10/21
3	Site Plan Control	S.G.	12/13/21
4	Site Plan Control	S.G.	12/15/21
5	Site Plan Control	S.G.	03/18/22
6	Site Plan Control	S.G.	06/23/22
7	Coordination plans - 99%	S.G.	08/26/22
8	Site Plan Control	S.G.	12/13/22
9	Site Plan Control	S.G.	02/24/23
10	Site Plan Control	S.G.	03/13/23
11	Site Plan Control - REVISION 01	S.G.	03/29/23
12	Site Plan Control - REVISION 02	S.G.	04/24/23
13	Site Plan Control - REVISION 03	S.G.	05/09/23

DO NOT USE FOR CONSTRUCTION

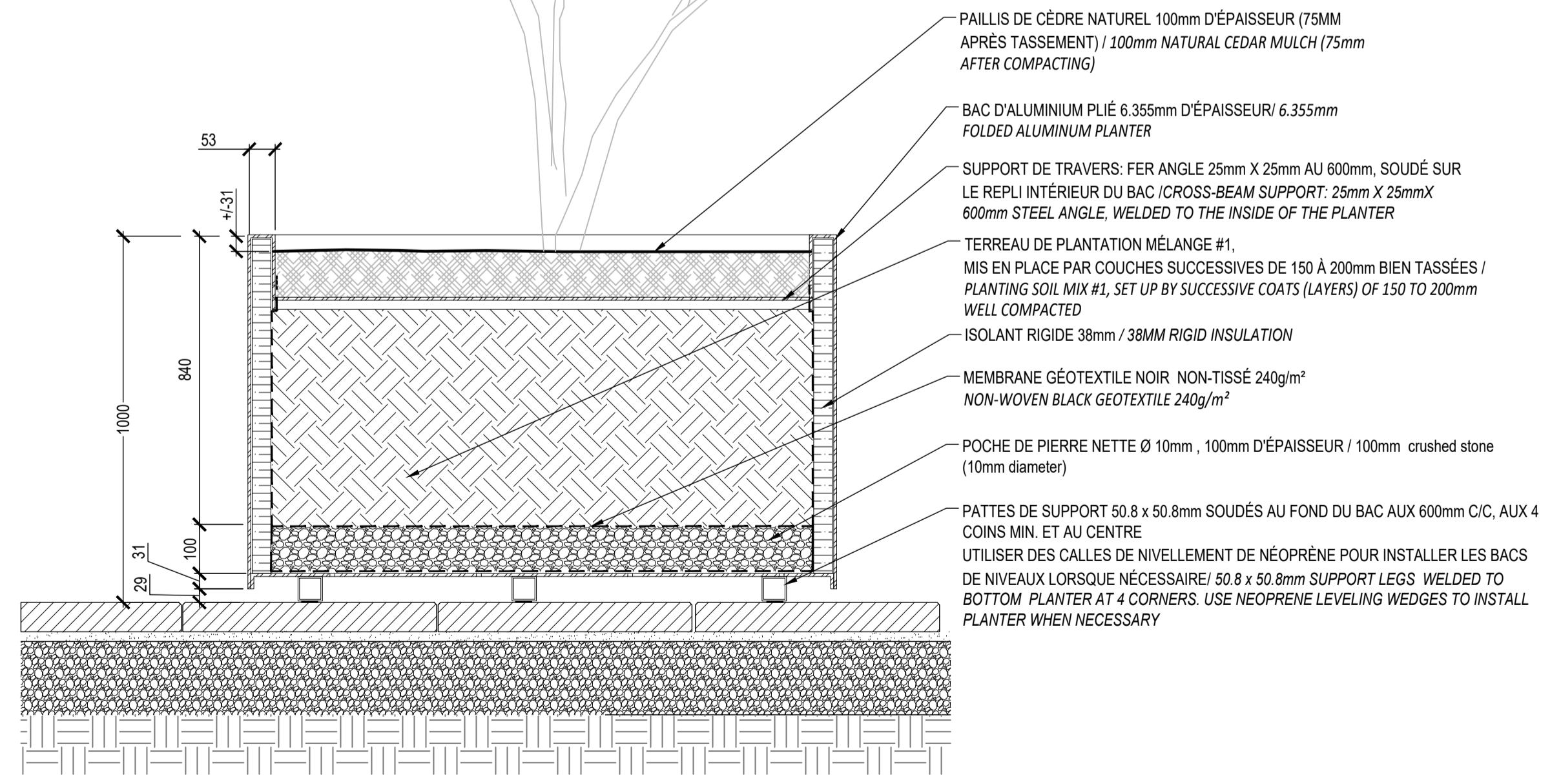
- GENERAL NOTES:**
- MANUALLY COMPACT THE SOIL DURING PLACEMENT TO AVOID SPILLING;
 - MAKE 6mm TO 300mm HOLES IN THE BOTTOM OF THE PLANTER TO ENSURE ADEQUATE DRAINAGE;
 - INSTALL THE PLANTERS DIRECTLY ON THE CONCRETE PAVERS;
 - INSTALL THE PLANTERS STRAIGHT AND LEVEL, USE NEOPRENE LEVELING WEDGES IF REQUIRED;
 - PLACE THE GEOTEXTILE MEMBRANE TO THE INSULATION TO KEEP IT IN PLACE;
 - ALL WELDS MUST BE CONCEALED.



Andrew McCreight

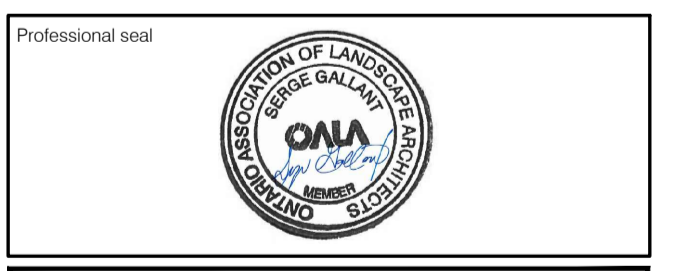
ANDREW MCCREIGHT
 MANAGER (A), DEVELOPMENT REVIEW CENTRAL
 PLANNING, REAL ESTATE & ECONOMIC DEVELOPMENT
 DEPARTMENT, CITY OF OTTAWA

APPROVED
 By Andrew McCreight at 9:20 am, Jun 15, 2023



- Notes :**
- 1- The Contractor must verify all site existing conditions before beginning the work and inform the Project Director of any errors, omissions or contradictions.
 - 2- Existing grades indicated on the plan come from the survey provided by the owner.
 - 3- The Contractor must not cut down any existing vegetation without the approval of the Project Director.
 - 4- Implantation of the works on site must be approved by the Project Director.
 - 5- The Contractor must use the CAD file for implantation of all work.
 - 6- The contractor must verify the amounts specified in the schedule and notify the landscape architect of any errors, omissions or contradictions before the close of the bid.

PROJET | PAYSAGE
 24 Mont-Royal O. Bureau 801 Montréal Québec H2T 2S2
 T: 514.849.7700 F: 514.849.2027 info@projetpaysage.com



Project name
979, WELLINGTON
D017-12-21-0228

Drawing title
PLANTING DETAILS

Indicated scales

Designed by: S. Gallant
 Drawn by: X. Benjamin
 Approved by: S. Gallant
 Date: November 2020
 Plan No: 18841

Sheet No.: **AP-53**