

CONSTRUCTION MANAGER
 Vuze Construction
 Street _____ City _____
 Quebec, ### ##
 Tel: (819) 664-4195
 Email: mchenier@vuzeconstruction.com

PROJECT DEVELOPER
Theberge Developments Ltd.
 1600 Laperriere Ave Suite 205
 Ottawa, ON K1Z 1B7
 Tel: (613) 421-1515
 Cell: (613) 880-5491
 Email: joeytheberge@thebergehomes.com
 Email: Jeremy@thebergehomes.com

PROJECT DEVELOPER
Starwood Group Inc.
 188 Eglinton Avenue East Suite 800
 Toronto, Ontario, M4P 2X7
 Tel: (416) 482-4822
 Fax: (416) 482-8224

LEGAL DESCRIPTION
 TOPOGRAPHICAL PLAN OF SURVEY
 PART 1 Plan of
 PART OF LOTS 1,2,3 AND 4
 REGISTERED PLAN 17
 CITY OF OTTAWA
 Surveyed by Annis, O'Sullivan, Vollebakk Ltd.

URBAN PLANNER
Fotenn Consultants Inc.
 396 Cooper Street, Suite 300
 Ottawa, ON Canada, K2P 2H7
 Tel: (613) 730-5709
 Fax: (613) 730-1136
 E-Mail: nahal@fotenn.com
 E-Mail: alain@fotenn.com

CIVIL ENGINEER
McINTOSH PERRY
 115 Walgreen Road
 Ottawa, ON K0A 1L0
 Tel: (613) 836-2184
 Fax: (613) 836-3742
 Email: r.robeau@mcintoshperry.com

LANDSCAPE ARCHITECT
James B. Lennox & Associates Inc.
 Landscape Architects
 3332 Carling Ave.
 Ottawa, Ontario K2H 5A8
 Tel: 613-722-5168
 Fax: 1-866-343-3942
 Email: ml@jbla.ca

TRANSPORTATION ENGINEER
CHG Transportation Inc.
 13 Markham Avenue
 Ottawa, ON K2G 3Z1
 Tel: (343) 999-9117
 Cell: (613) 697-3797
 Email: Christopher.Gordon@CHGTransportation.com
 Email: john.kingsley@chgtransportation.com

WIND / NOISE ENGINEER
Gradient Wind Engineering
 127 Walgreen Road,
 Ottawa, ON, Canada K0A 1L0
 Tel: (613) 836-0934
 Cell: (613) 228-5273
 Email: joshua.foster@gradientwind.com

SURVEYOR
Annis O'Sullivan Vollebakk Ltd.
 Ontario Land Surveyors
 14 Concourse Gate, Suite 500,
 Nepean, Ontario K2E 7S6
 Tel: (613) 727-0850
 Fax: (613) 727-1079
 E-Mail: Andys@aovltd.com

St. JOSEPH BOULEVARD

PROJECT INFORMATION

Zoning By-law 2006-250 Consolidation AMJ2705/5438

	REQUIRED	PROVIDED
BUILDING HEIGHT	16 STOREYS / 52.4m	18 STOREYS / 59.5m
ALLOWABLE PROJECTION - AMENITY LEVEL	0.0m	4.0m
GRADE (GEODETTIC ELEVATION - ASL)	72.40m ASL	72.40m ASL
DENSITY - MAXIMUM FLOOR SPACE INDEX	4.25	5.1
FRONT YARD SETBACK - AS PER SCHEDULE 5438	9.0m	9.3m
CORNER YARD SETBACK (Saint Joseph / Duford Avenue)	3.5m / 0.0m	3.5m / 0.3m
INTERIOR SIDE YARD SETBACK	0.0m	0.3m
AMENITY AREA - TOTAL PER UNIT - 6.0m ²	1,212m ²	1,635m ²
AMENITY AREA - 50% COMMUNAL PER UNIT - 3.0m ²	606m ²	785m ²
RESIDENTIAL PARKING (AREA "Z" - MIN. 0 / MAX. 1.75 PER UNIT)	MIN. 0 / MAX. 354	141
VISITOR PARKING - 0.1 PER UNIT AFTER 12 UNITS	19	19
COMMERCIAL PARKING (AREA "Z")	NOT REQUIRED	0
BICYCLE PARKING - RESIDENTIAL - 0.5 PER UNIT	101	202
BICYCLE PARKING - COMMERCIAL - 1 PER 250m ² GFA	2	8
ASLE & DRIVEWAY MINIMUM / MAXIMUM WIDTH	6.0m / 6.7m	6.0m / 6.7m
ST. JOSEPH BOULEVARD FRONTAGE MINIMUM GROUND FLOOR GLAZING	50%	± 65%

NOTATION SYMBOLS:

① INDICATES DRAWING NOTES, LISTED ON EACH SHEET.

Ⓜ INDICATES ASSEMBLY TYPE; REFER TO TYPICAL ASSEMBLY SCHEDULE.

Ⓜ INDICATES WINDOW TYPE; REFER TO WINDOW ELEVATIONS AND DETAILS ON A300 SERIES.

Ⓜ INDICATES DOOR TYPE; REFER TO DOOR SCHEDULE AND DETAILS ON A300 SERIES.

① - DETAIL NUMBER

① - TITLE

① - DETAIL REFERENCE PAGE

① - DETAIL CROSS REFERENCE PAGE

PROJECT STATISTICS

GROSS BUILDING
 (CITY OF OTTAWA'S DEFINITION)

FLOOR	AREA (sq. m.)	AREA (sq. ft.)
GROUND FLOOR	259.8	(2,796)
1st FLOOR	452.4	(4,870)
2nd FLOOR	1,042.5	(11,221)
3th & 4th FLOOR	2 x 1,042.5	2 x (11,221)
5th to 17th FLOOR	13 x 689.25	13 x (7,419)
18th FLOOR	8,960.2	(96,447)
MECHANICAL LEVEL	N/A	
TOTAL AREA	13,261.4	(142,745)

UNIT STATISTICS

UNIT TYPE	QUANTITY
STUDIO UNIT	4
1 BEDROOM UNIT	46
1 BEDROOM + DEN UNIT	39
2 BEDROOM UNIT	103
2 BEDROOM + DEN UNIT	7
3 BEDROOM UNIT	3
TOTAL	202

CAR PARKING

REQUIRED BY ZONING BY-LAW

TYPE	AREA "Z" NONE REQUIRED	QUANTITY
RESIDENCE	- AREA "Z" NONE REQUIRED	0
VISITOR	- 0.1 PER DWELLING UNIT (AFTER 12 UNITS)	19
COMMERCIAL RETAIL	- AREA "Z" NONE REQUIRED	0
TOTAL		19

PROVIDED

TYPE	QUANTITY	
RESIDENCE	- 0.7 PER UNIT	141
VISITOR	- 0.1 PER UNIT	19
TOTAL	160	

LOCATION

TYPE	QUANTITY
P3 LEVEL UNDER GROUND PARKING	49
P1 LEVEL UNDER GROUND PARKING	47
GROUND FLOOR PARKING	17
TOTAL	160

BICYCLE PARKING

REQUIRED

TYPE	QUANTITY	
RESIDENCE	- 0.5 PER UNIT (202 UNITS)	101
COMMERCIAL RETAIL	- 1.0 PER 250m ² OF G.F.A.	2
TOTAL	103	

PROVIDED

TYPE	QUANTITY
EXTERIOR	8
INDOOR ON GROUND FLOOR	202
TOTAL	210

LOT COVERAGE

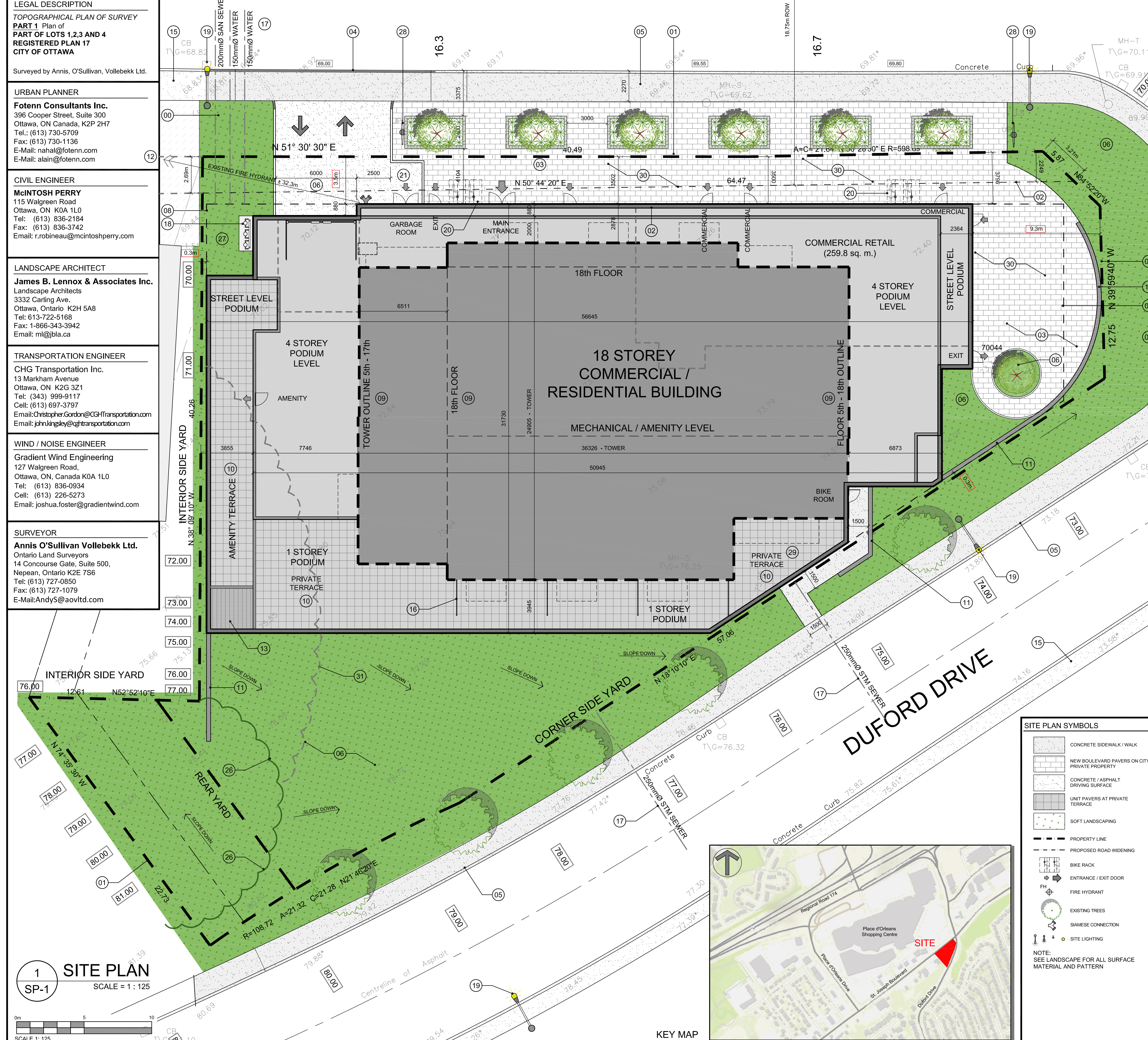
TYPE	AREA (sq. m.)	PERCENTAGE
PAVED SURFACE	43.7	1.6%
BUILDING FOOTPRINT	1,618.9	61.2%
LANDSCAPE OPEN SPACE	981.4	37.2%
TOTAL	2,643.97	100.0%

AMENITY SPACE

TYPE	AREA (sq. m.)
AT GRADE COMMUNAL	150.0
1st FLOOR AMENITY ROOM COMMUNAL	450.0
1st FLOOR TERRACE COMMUNAL	85.0
PRIVATE TERRACE	300.0
PRIVATE BALCONIES	550.0
ROOF TOP COMMUNAL	100.0
TOTAL	1,635.0
TOTAL COMMUNAL	785.0
REQUIRED - 6.0M ² PER UNIT (202)	1,212.0
REQUIRED COMMUNAL @ 50%	606.0

SOLID WASTE (202 UNITS)

TYPE	QUANTITY	
GARBAGE	- 0.11 PER UNIT	23 YARDS
RECYCLING GMP	- 0.018 PER UNIT	4 YARDS
RECYCLING FIBER	- 0.038 PER UNIT	8 YARDS
COMPOST	- 240L PER 50 UNITS	4



- DRAWING NOTES**
- PROPERTY LINE
 - PROPOSED ROAD WIDENING
 - HARD SURFACE PAVING, SEE LANDSCAPE PLAN
 - CONTINUOUS DEPRESSED SIDEWALK THROUGH DRIVE
 - CONCRETE SIDEWALK TO BE REPLACED WITH NEW BARRIER CURB / SIDEWALK
 - SOFT LANDSCAPING, SEE LANDSCAPE PLAN
 - 6.0m WIDE GARAGE ENTRY RAMP WITH TRENCH DRAIN
 - OUTLINE OF BELOW GRADE PARKING GARAGE
 - OUTLINE OF UPPER FLOORS
 - AMENITY / PRIVATE TERRACE
 - RETAINING WALL WITH GUARD RAIL AS REQUIRED
 - EXISTING FIRE HYDRANT
 - VENTILATION GRILL (INTAKE / EXHAUST)
 - SIAMSESE CONNECTION
 - EXISTING CITY SIDEWALK
 - PRIVACY SCREEN
 - PROPOSED SERVICES
 - GAS EQUIPMENT LOCATION
 - EXISTING STREET LIGHT / TRAFFIC POLE
 - BICYCLE PARKING SPACE WITH RACK
 - SERVICE ENTRANCE - MOVE IN/OUT
 - 150mm WIDE BARRIER CURB
 - RE-INSTATE EXISTING BOARD FENCE
 - 150mm WIDE BARRIER CURB
 - PROPOSED TREES, SEE LANDSCAPE FOR DETAILS
 - EXISTING TREE TO REMAIN, PROTECT AS REQUIRED
 - WATER ENTRY IN P1 PARKING GARAGE
 - HYDRO POLE WITH OH WIRES
 - CISTERN AT GROUND FLOOR
 - POSSIBLE COMMERCIAL PATIO
 - EXISTING TREE TO BE REMOVED

- SITE PLAN SYMBOLS**
- CONCRETE SIDEWALK / WALK
 - NEW BOULEVARD PAVERS ON CITY / PRIVATE PROPERTY
 - CONCRETE / ASPHALT DRIVING SURFACE
 - UNIT PAVERS AT PRIVATE TERRACE
 - SOFT LANDSCAPING
 - PROPERTY LINE
 - PROPOSED ROAD WIDENING
 - BIKE RACK
 - ENTRANCE / EXIT DOOR
 - FIRE HYDRANT
 - EXISTING TREES
 - SIAMSESE CONNECTION
 - SITE LIGHTING
- NOTE: SEE LANDSCAPE FOR ALL SURFACE MATERIAL AND PATTERN



1 SITE PLAN
 SP-1
 SCALE = 1 : 125

CLIENT: St. Joseph Inc.
MASTERCRAFT STARWOOD
 Investment Builders Since 1951

ARCHITECT: rla/architecture
 roderick lahey architect inc.
 56 beech street, ottawa, ontario K1S 3J6
 t. 613.724.9932 f. 613.724.1209 la@architecture.ca

PROJECT TITLE: 3030 St. JOSEPH BOULIVARD

OTTAWA ONTARIO

SHEET TITLE: SITE PLAN

DRAWN: R.V.
CHECKED: R.V.
SCALE: 1:125
SHEET No.: SP-1
PROJECT No.: 2222