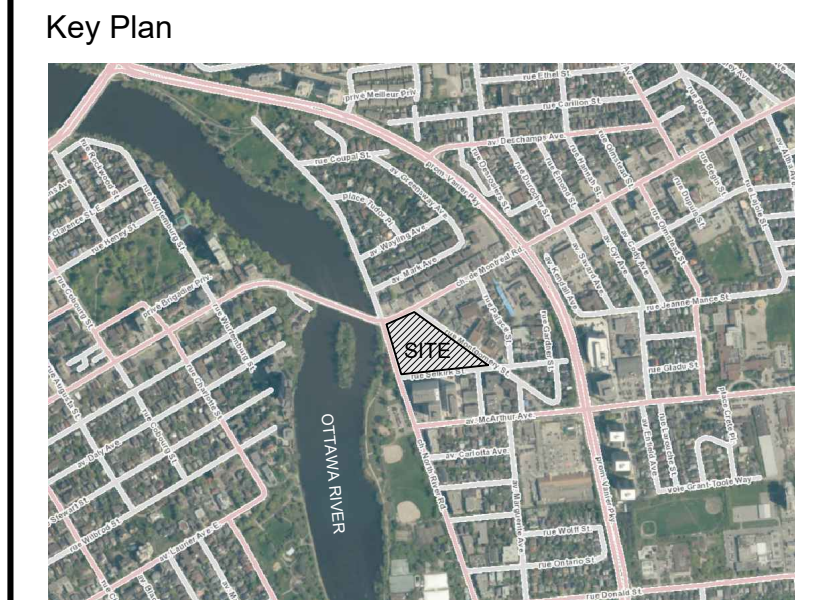


SITE DESCRIPTION:

- THE EXISTING SITE CONTAINS MULTIPLE PARCELS OF LAND. THE LARGEST LAND PARCEL INCLUDES A SINGLE STORY COMMERCIAL/RETAIL BUILDING AND IS LARGELY OCCUPIED BY PARKING LOT. THE PROPERTY IS FAIRLY FLAT AND VOID OF TREES WITH THE EXCEPTION OF A FEW ALONG THE WESTERN EDGE BETWEEN THE PARKING AND SIDEWALK ADJACENT NORTH RIVER ROAD. THE SECOND SMALLER PARCEL TO THE NORTH IS COMPRISED OF TURF AND ASPHALT CONSISTENT WITH A DECOMMISSIONED LOT. THE PARCEL IS SEPARATED FROM THE PARKING LOT BY A LOW RETAINING WALL AND FENCING CHAIN LINK AND WOOD BOARD FENCING. A NUMBER OF TREE ARE ESTABLISHED NORTH OF THE RETAINING WALL.
 - THE SITE IS 16930m² (1,693Ha).
 - APPROXIMATELY 9553m² IS OCCUPIED BY HARD SURFACES.
 - APPROXIMATELY 5577m² IS OCCUPIED BY BUILDING.
- GENERALLY, THE TREES ON THE PROPERTY ARE IN GOOD CONDITION. TREES OUTSIDE THE PROPERTY (CITY TREES) ARE GENERALLY IN GOOD CONDITION WITH THE EXCEPTION OF A COUPLE THAT ARE EITHER DEAD/POOR CONDITION.
 - 21 TREES WERE INVENTORIED IN THE PROXIMITY OF THE PROJECT PROPERTY.
 - 10 TREES ARE ON CITY PROPERTY, WHILE 11 TREES ARE ON PRIVATE PROPERTY.
 - THE CITY TREES AT THE NORTHWEST CORNER OF THE PROPERTY ARE PART OF A PARKETTE/SEATING SPACE PER THE INTERSECTION OF NORTH RIVER ROAD AND MONTREAL ROAD. THESE LARGE TREES, WHICH ARE IN GOOD CONDITION, PROVIDE SHADE FOR THE SEATING AREA AND HAVE A HIGH VALUE FUNCTION. A COUPLE OF THE TREE'S CRITICAL ROOT ZONES CROSS THE PROPERTY LINE AND DO SO IN A MINOR CAPACITY.
- THE DEVELOPMENT SITE APPEARS TO BE OUTSIDE AND THEREFORE DOES NOT SIGNIFICANTLY CONTRIBUTE TO THE CITY'S 'NATURAL LANDS' AREA AS INDICATED IN THE GREENSPACE MASTER PLAN.

TREE CONSERVATION - FIELD NOTES								
Tree #	Botanical Name	Common Name	Caliper (cm)	Condition	High Quality Tree	Rare Tree	Comments	To Be Preserved
1	Tilia cordata	Little Leaf Linden	25	Moderate	No	No	Privately owned, Symmetrical canopy, Die-back ~15%, Broken limbs, Single stem, Leaning, Included bark	Remove
2	Tilia cordata	Little Leaf Linden	25	Good	No	No	Privately owned, Symmetrical canopy, Single stem, Co-dominant leaders 2 @ ~2.0m above grade, Included bark	Remove
3	Tilia cordata	Little Leaf Linden	20	Poor	No	No	Privately owned, Die-back ~50%, Single stem, Co-dominant leaders 3 @ ~2.0m above grade, Bark rot @ limbs	Remove
4	Tilia cordata	Little Leaf Linden	30	Good	No	No	City owned, Symmetrical canopy, Single stem	Retain
5	Tilia cordata	Little Leaf Linden	30	Good	No	No	City owned, Symmetrical canopy, Single stem	Retain
6	Tilia cordata	Little Leaf Linden	30	Good	No	No	City owned, Symmetrical canopy, Single stem	Retain
7	Tilia cordata	Little Leaf Linden	30	Good	No	No	City owned, Symmetrical canopy, Single stem	Remove
8	Tilia cordata	Little Leaf Linden	30	Good	No	No	City owned, Symmetrical canopy, Single stem	Remove
9	Tilia cordata	Little Leaf Linden	30	Good	No	No	City owned, Symmetrical canopy, Single stem	Retain
10	Acer platanoides	Norway Maple	15	Good	No	No	City owned, Symmetrical canopy, Single stem, Co-dominant leaders 2 @ ~2.0m above grade, Single stem, Co-dominant leaders 2 @ ~2.0m above grade	Remove
11	Acer platanoides	Norway Maple	15	Good	No	No	City owned, Symmetrical canopy, Single stem, Co-dominant leaders 2 @ ~2.0m above grade, Establishing vines	Remove
12	Ulmus Americana	American Elm	15	Poor	No	No	City owned, Symmetrical canopy, Die-back ~90%, Single stem, Significant vines	Remove
13	Ulmus Americana	American Elm	10	Good	No	No	City owned, Symmetrical canopy, Minor pruning.	Remove
14	Tilia cordata	Little Leaf Linden	35	Good	No	No	Privately owned, Symmetrical canopy, Die-back ~5%, Broken limbs, Single stem, Co-dominant leaders 2 @ ~3.0m above grade	Remove
15	Acer negundo	Manitoba Maple	30	Moderate	No	No	Privately owned, Symmetrical canopy, Die-back ~5%, Broken limbs, Multi-stem: 5, Leaning	Remove
16			25	Dead				Remove
17	Acer platanoides	Norway Maple	35	Good	No	No	Privately owned, Asymmetrical canopy, Die-back ~5%, Single stem	Remove
18	Tilia cordata	Little Leaf Linden	35	Good	No	No	Privately owned, Symmetrical canopy, Single stem, Contains nest	Remove
19	Acer platanoides	Norway Maple	15-25	Good	No	No	Privately owned, Symmetrical canopy, Die-back ~5%, Multi-stem: 6, Leaning	Remove
20	Picea pungens	Colorado Spruce	35	Good	No	No	Privately owned, Symmetrical canopy, Die-back ~20%, Single stem	Remove
21	Picea pungens	Colorado Spruce	35	Good	No	No	Privately owned, Symmetrical canopy, Die-back ~5%, Single stem	Remove



LEGEND

- CRITICAL ROOT ZONE (CRZ)
- DEAD TREE
- EXISTING BUILDING / STRUCTURE
- EXISTING HARD / IMPERMEABLE SURFACE

No.	Revision	Date
3	RE-ISSUE FOR SPA	21 JUL 2022
2	ISSUE FOR SPA	11 FEB 2022
1	TREE CONSERVATION REPORT	16 JUN 2020

North:

Stamp:

CSW Landscape Architecture
 Urban Design
 Site Planning
 Recreation and Park Planning
 Project Management

319 McRae Avenue, Suite 502, Ottawa, Ontario, K1Z 0B9
 Tel: (613) 729-4536

- All measurements in millimeters unless specified otherwise. Do not scale drawing. All drawings to be read in conjunction with written specifications.
- Copyright reserved. This drawing is the exclusive property of CSW Landscape Architects Ltd. and shall not be used without the consent thereof.
- This Drawing may not be used for construction until signed by the landscape architect. It is the responsibility of the contractor to:
 - check and verify all dimensions on site;
 - report all errors and/or omissions to the landscape architect;
 - comply with all pertinent codes and by-laws;
 - check and verify locations of all underground services with all local utilities prior to any digging.

Project: **RIVERAIN DISTRICT**

2 MONTREAL RD. & 3 SELKIRK ST,
 OTTAWA., ONTARIO

Drawing: **TREE CONSERVATION REPORT**

Scale: 1:500	Date: 2020-06-16
Design By:	Drawn By: AB
Project Number: 2052-01	Sheet Number: TCR 01

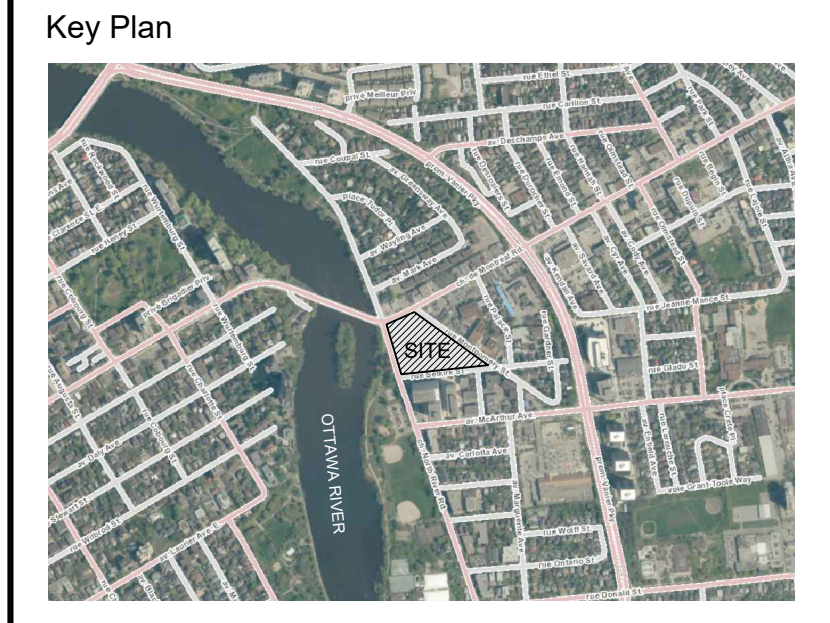
1 EXISTING VEGETATION



Last Save: 2022/07/14 10:13:12 AM
 File Location: Z:\Projects\2052-01-29 Selkirk Street\Drawings\TCR\2052-01-29 Selkirk Street_TCR 01 (Tree Conservation Report).Rt.dwg

D07-12-21-0123

- LEGEND
- CRITICAL ROOT ZONE (CRZ)
 - DEAD TREE
 - EXISTING TREE TO BE REMOVED (BY CITY OF OTTAWA QTY.5)
 - EXISTING TREE TO BE REMOVED (BY OWNER QTY.12)
 - TREE TO BE PROTECTED DURING CONSTRUCTION
 - PROPOSED DECIDUOUS TREES
 - PROPOSED BUILDING / STRUCTURE
 - PROPOSED HARD / IMPERMEABLE SURFACE



No.	Revision	Date
3	RE-ISSUE FOR SPA	21 JUL 2022
2	ISSUE FOR SPA	11 FEB 2022
1	TREE CONSERVATION REPORT	16 JUN 2020

North:

Stamp:

CSW Landscape Architecture
 Urban Design
 Site Planning
 Recreation and Park Planning
 Project Management

319 McRae Avenue, Suite 502, Ottawa, Ontario, K1Z 0B9
 Tel: (613) 729-4536

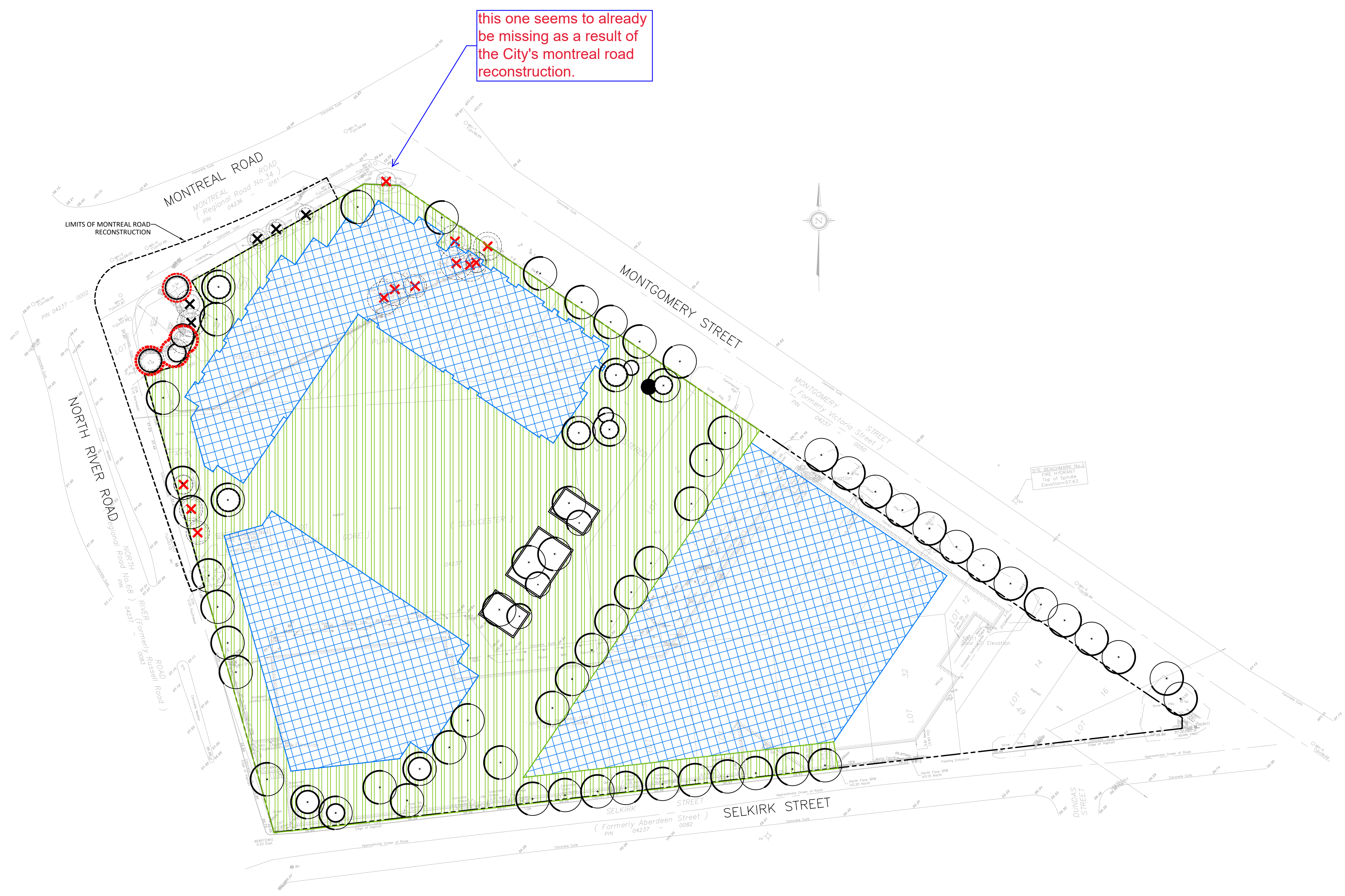
- All measurements in millimeters unless specified otherwise. Do not scale drawing. All drawings to be read in conjunction with written specifications.
- Copyright reserved. This drawing is the exclusive property of CSW Landscape Architects Ltd. and shall not be used without the consent thereof.
- This Drawing may not be used for construction until signed by the landscape architect. It is the responsibility of the contractor to:
 - check and verify all dimensions on site;
 - report all errors and/or omissions to the landscape architect;
 - comply with all pertinent codes and by-laws;
 - check and verify locations of all underground services with all local utilities prior to any digging.

Project:
RIVERAIN DISTRICT

2 MONTREAL RD. & 3 SELKIRK ST,
 OTTAWA., ONTARIO

Drawing:
TREE CONSERVATION REPORT

Scale: 1:500	Date: 2020-06-16
Design By:	Drawn By: AB
Project Number: 2053-01	Sheet Number: TCR 02



2 PROPOSED DEVELOPMENT & CONSERVED VEGETATION



Last Save: 2020/07/14 10:13:12 AM
 File Location: Z:\Projects\2053-01-29 Selkirk Street\Drawings\TCR\2053-01-29 Selkirk Street\Tree Conservation Report\1_R1.dwg

D07-12-21-0123