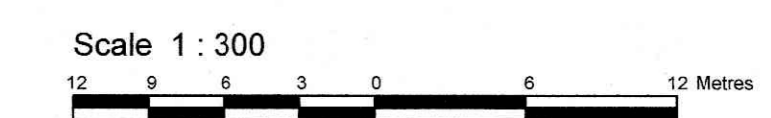


LOTS 2, 4, 6, 8, 10, 12, 14, 16, 32, 33, 34, 35 AND PART OF LOT 1 REGISTERED PLAN 49 AND LOTS 14, 15, 16 AND PART OF LOTS 1, 2, 3, 4, AND 5 REGISTERED PLAN 51 AND PART OF LOT 7 JUNCTION GORE GEOGRAPHIC TOWNSHIP OF GLOUCESTER CITY OF OTTAWA

Prepared by Annis, O'Sullivan, Vollebek Ltd. Field Work Completed March 6, 2020.



Metric DISTANCES SHOWN ON THIS PLAN ARE IN METRES AND CAN BE CONVERTED TO FEET BY DIVIDING BY 0.3048

Surveyor's Certificate

- I CERTIFY THAT: 1. This survey and plan are correct and in accordance with the Surveys Act, the Surveyors Act and the Land Titles Act and the regulations made under them. 2. The survey was completed on the 6th day of March, 2020.

Date: 6/03/20 V. Andrew Sheip Ontario Land Surveyor

Bearing Note

Bearings are grid, derived from the northern limit of Selkirk Street having a bearing of N83°27'50"E as shown on a Plan by (857) dated July 14, 2000 and are referenced to the Central Meridian of MTM Zone 9 (76°30' West Longitude ) NAD-83 (original).

ELEVATION NOTES

- 1. Elevations shown are geodetic and are referred to the CGVD28 geodetic datum, derived from City of Ottawa benchmark No. 3465 having an elevation of 62.831 metres. 2. It is the responsibility of the user of this information to verify that the job benchmark has not been altered or disturbed and that its relative elevation and description agrees with the information shown on this drawing.

UTILITY NOTES

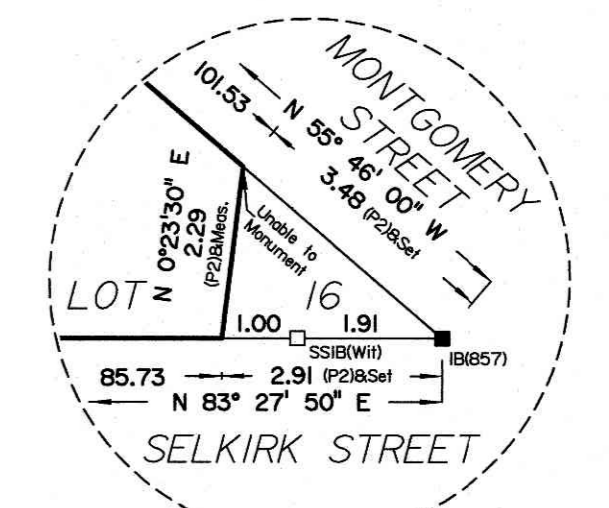
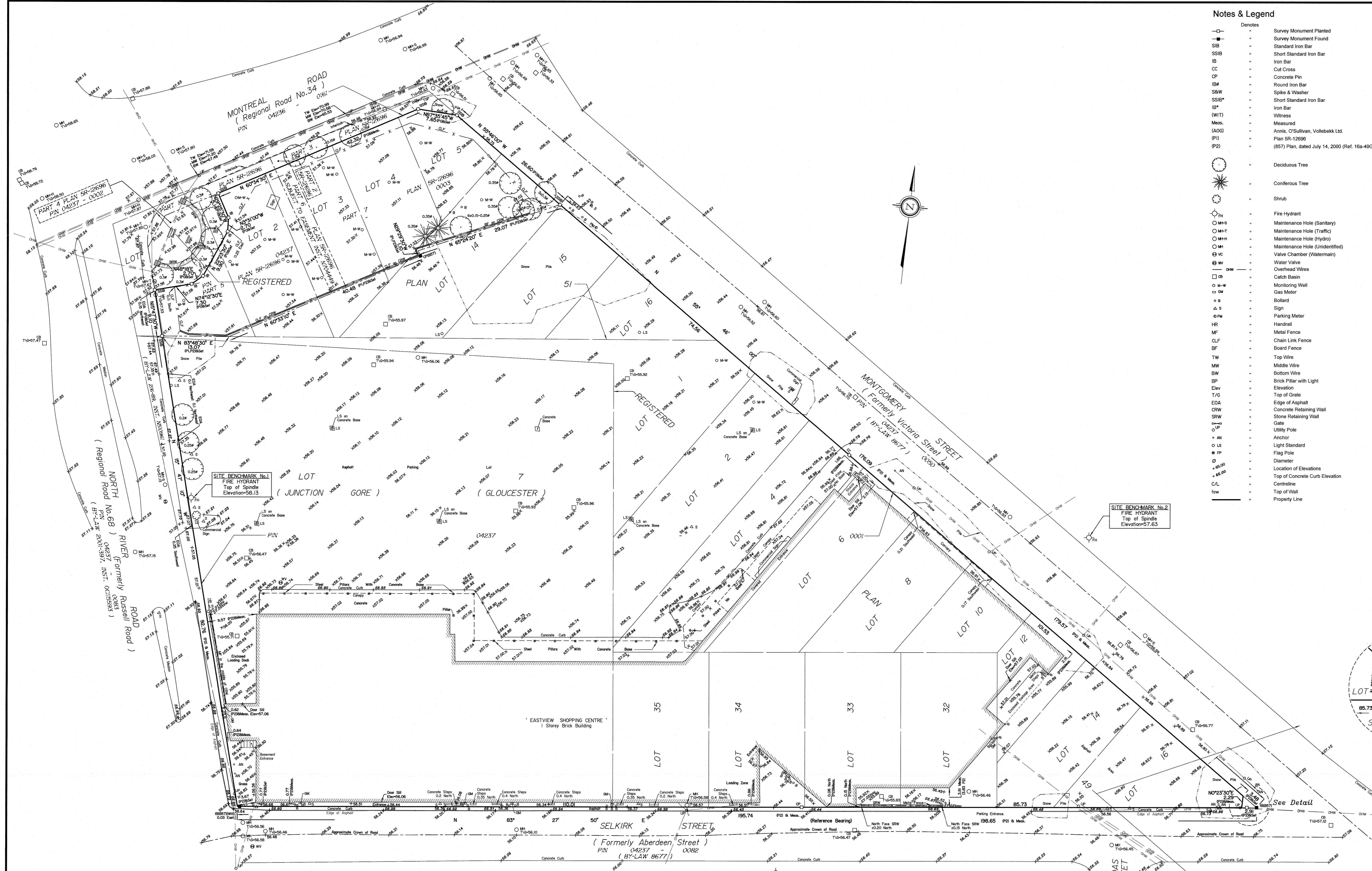
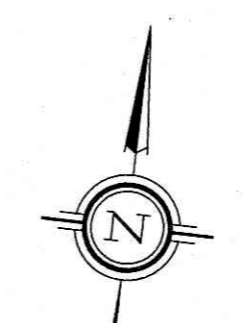
- 1. This drawing cannot be accepted as acknowledging all of the utilities and it will be the responsibility of the user to contact the respective utility authorities for confirmation. 2. Only visible surface utilities were located. 3. A field location of underground plant by the pertinent utility authority is mandatory before any work involving breaking ground, probing, excavating etc.

SITE AREA = 16931.9 m<sup>2</sup>

Topographic data was collected under Winter Conditions. Snow cover and ice preclude determining location and elevation of some topographical data that is otherwise visible.

Notes & Legend

- Denotes: Survey Monument Planted, Survey Monument Found, Standard Iron Bar, Short Standard Iron Bar, Iron Bar, Cut Cross, Concrete Pin, Round Iron Bar, Spike & Washer, Short Standard Iron Bar, Iron Bar, Witness, Measured, Annis, O'Sullivan, Vollebek Ltd., Plan SR-12696, (857) Plan, dated July 14, 2000 (Ref. 16a-49GR), Deciduous Tree, Coniferous Tree, Shrub, Fire Hydrant, Maintenance Hole (Sanitary), Maintenance Hole (Traffic), Maintenance Hole (Hydro), Maintenance Hole (Unidentified), Valve Chamber (Watermain), Water Valve, Overhead Wires, Catch Basin, Monitoring Well, Gas Meter, Bollard, Sign, Parking Meter, Handrail, Metal Fence, Chain Link Fence, Board Fence, Top Wire, Middle Wire, Bottom Wire, Brick Pillar with Light, Elevation, Top of Grate, Edge of Asphalt, Concrete Retaining Wall, Stone Retaining Wall, Gate, Utility Pole, Anchor, Light Standard, Flag Pole, Diameter, Location of Elevations, Top of Concrete Curb Elevation, Centreline, Top of Wall, Property Line



ASSOCIATION OF ONTARIO LAND SURVEYORS PLAN SUBMISSION FORM 2121743. THIS PLAN IS NOT VALID UNLESS IT IS AN EMBOSSSED ORIGINAL COPY ISSUED BY THE SURVEYOR in accordance with Regulation 1029, Section 29 (3).