

Distances shown on this plan are ground distances and can be converted to grid distances by multiplying by the combined scale factor of 0.9999xx.

Bearings are grid, derived from Can-Net 2016 Real Time Network GPS observations on reference points A and B, shown hereon, having a bearing of N55°46'00"W and are referenced to Specified Control Points 01919680105 and 019198434761, MTM Zone 9 (76°30' West Longitude) NAD-83 (original).

Coordinates are derived from Can-Net 2016 Real Time Network GPS observations referenced to Specified Control Points 01919680105 and 01918434761, MTM Zone 9 (76°30' West Longitude) NAD-83 (original).

Coordinate values are to urban accuracy in accordance with O. Reg. 216/10.

01919680105	Northing	5024915.16	Easting	373971.65
019198434761	Northing	5036178.12	Easting	372436.11
Point A	Northing	5032888.56	Easting	369840.99
Point B	Northing	5032787.54	Easting	369899.44

Caution: Coordinates cannot, in themselves, be used to re-establish corners or boundaries shown on this plan.

SCHEDULE			
PART	LOT	CONCESSION/PLAN	PIN
1	PART OF LOTS 1, 2, 3, 4, 5 & 14	REGISTERED PLAN 51	ALL OF 04237-0003
2	LOTS 15, 16 & PART OF LOTS 1, 2, 3, 4 & 14	CONCESSION JUNCTION GORE GEOGRAPHIC TOWNSHIP OF GLOUCESTER	ALL OF 04237-0001
	PART OF LOT 7	REGISTERED PLAN 49	
3	LOT 2 AND PART OF LOTS 1, 4 & 35	CONCESSION JUNCTION GORE GEOGRAPHIC TOWNSHIP OF GLOUCESTER	
4	PART OF LOT 7	REGISTERED PLAN 49	
5	LOTS 6, 8 & 34 AND PART OF LOTS 4, 10, 32, 33 & 35	CONCESSION JUNCTION GORE GEOGRAPHIC TOWNSHIP OF GLOUCESTER	
6	LOTS 12 & 14 AND PART OF LOTS 10, 16, 32 & 33	REGISTERED PLAN 49	
6	PART OF LOT 7	CONCESSION JUNCTION GORE GEOGRAPHIC TOWNSHIP OF GLOUCESTER	

**PLAN 4R-34900**

Received and deposited

September 13<sup>th</sup>, 2022

**Judy Toussaint**

Representative for the Land Registrar for the Land Titles Division of Ottawa-carleton (No.4)

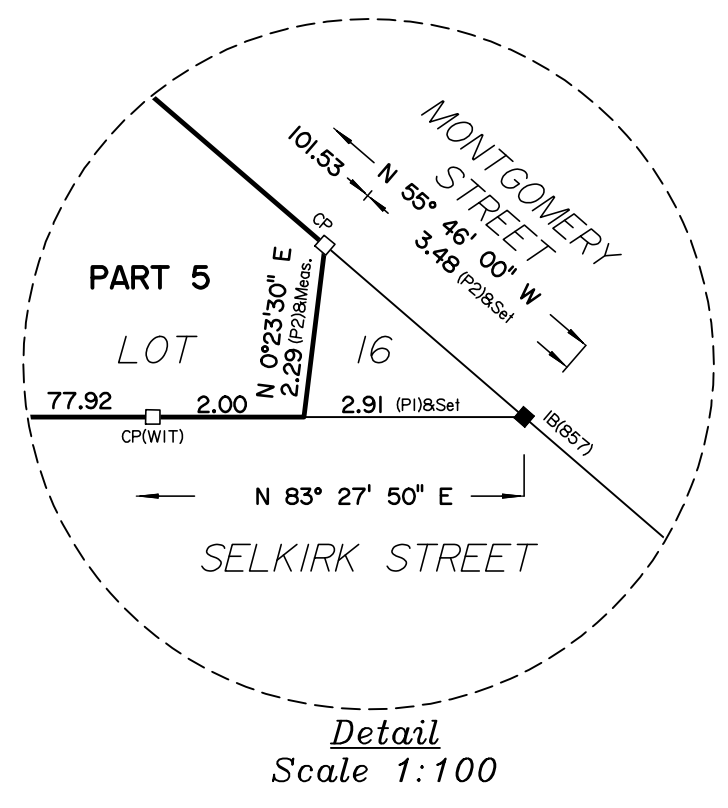
PLAN OF SURVEY OF

**LOTS 2, 4, 6, 8, 10, 12, 14, 32, 33, 34, 35 AND PART OF LOT 1 AND 16 REGISTERED PLAN 49 AND LOTS 14, 15, 16 AND PART OF LOTS 1, 2, 3, 4, AND 5 REGISTERED PLAN 51 AND PART OF LOT 7 CONCESSION JUNCTION GORE GEOGRAPHIC TOWNSHIP OF GLOUCESTER CITY OF OTTAWA**

Surveyed by Annis, O'Sullivan, Vollebakk Ltd.

Scale 1 : 300

The intended plot size of this plan is 609mm in width by 914mm in height when plotted at a scale of 1:300.



Metric

DISTANCES AND COORDINATES SHOWN ON THIS PLAN ARE IN METRES AND CAN BE CONVERTED TO FEET BY DIVIDING BY 0.3048.

**Surveyor's Certificate**

I CERTIFY THAT:

- This survey and plan are correct and in accordance with the Surveys Act, the Surveyors Act and the Land Titles Act and the regulations made under them.
- The survey was completed on the 22<sup>nd</sup> day of August, 2022.

September 6, 2022

Date

*E. H. Hervey*

E. H. Hervey  
Ontario Land Surveyor

This plan relates to AOLS Plan Submission form number: V-31835

**Notes & Legend**

- Denotes Survey Monument Planted
- Denotes Survey Monument Found
- SIB Standard Iron Bar
- SSIB Short Standard Iron Bar
- IB Iron Bar
- CC Cut Cross
- CP Concrete Pin
- (WIT) Witness
- (AOG) Annis, O'Sullivan, Vollebakk Ltd.
- Meas. Measured
- (P1) (AOG) Plan dated March 12, 2020
- (P2) (857) Plan dated July 14, 2000

All set survey monuments are SSIB unless otherwise noted.

SELKIRK STREET  
(Formerly Aberdeen Street) (BY-LAW 8677)  
P/N 04237 - 0082  
REGISTERED PLAN 49

