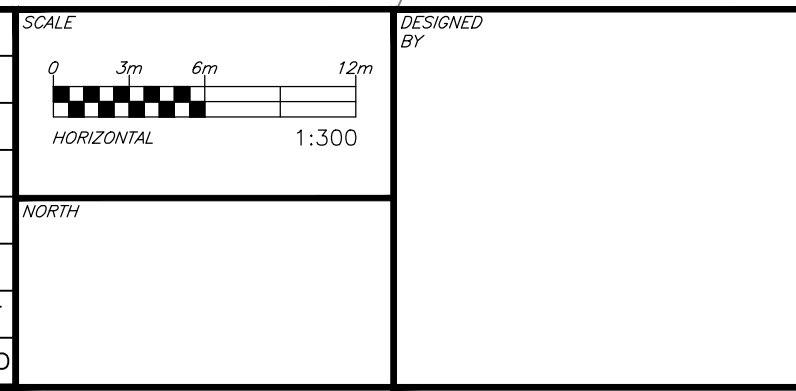


**CAUTION**  
 THE POSITION OF ALL POLE LINES, CONDUITS, WATERMANS, SEWERS AND OTHER UNDERGROUND AND OVERGROUND UTILITIES AND STRUCTURES IS NOT NECESSARILY SHOWN ON THE CONTRACT DRAWINGS, AND WHERE SHOWN, THE ACCURACY OF THE POSITION OF SUCH UTILITIES AND STRUCTURES IS NOT GUARANTEED. BEFORE STARTING WORK, DETERMINE THE EXACT LOCATION OF ALL SUCH UTILITIES AND STRUCTURES AND ASSUME ALL LIABILITY FOR DAMAGE TO THEM.

REV	REVISION DESCRIPTION	DATE	BY	APPD
1	ISSUED FOR APPROVAL	14/06/23	SAB	BMT



DESIGNED BY  
 REVIEWED BY

DEVELOPER  
**THEBERGE HOMES**  
 1600 LAPERRIERE AVENUE, SUITE 205  
 OTTAWA, ON. K1Z 8P5  
 613.421.1515

BASEPLAN	SAB
DESIGN	AS
CHECKED	
CAD	SAB
PROJECT MANAGER	BMT
APPROVED	

PROJECT  
**SECOND LINE ROAD**  
 1158 OLD SECOND LINE ROAD  
 KANATA, ONTARIO.

TITLE  
**POST-DEVELOPMENT CATCHMENTS**

PROJECT No.  
 OTT-00245003-A1

SURVEY  
 FSD

DATE  
 JUNE 2023

DRAWING No.  
 C09

File Name: C:\projects\00245003\1158\1158\_PCD\_Catchments.dwg  
 User: BMT  
 Date: 14/06/2023 10:30:35 AM  
 Plot Date: 14/06/2023 10:30:35 AM  
 Plotter: HP DesignJet T1100e  
 Plot Style: HP-Plotter.ctb  
 Scale: 1:300  
 Sheet: 1 of 1  
 Title: POST-DEVELOPMENT CATCHMENTS