

GENERAL NOTES:

- ACER RUBRUM, CELTIS OCCIDENTALIS, AND QUERCUS RUBRA TO BE SPRING DUG SPECIMENS AND PLANTED IN THE SPRING ONLY.
- THE LOCATION OF THE TREES SHOWN ON THIS PLAN IS APPROXIMATE AND SHALL NOT BE SCALED FROM THIS DRAWING. THIS PLAN MUST BE READ IN CONJUNCTION WITH THE APPROVED CUP AND CITY CROSS SECTIONS.
- CONTRACTOR SHALL ENSURE THAT ALL UTILITY LOCATIONS ARE OBTAINED PRIOR TO ANY EXCAVATION FOR LANDSCAPING.
- LOCATION OF ALL PLANT MATERIALS TO BE STAKED BY THE CONTRACTOR AND VERIFIED IN THE FIELD BY LANDSCAPE ARCHITECT & CITY OF OTTAWA PRIOR TO THE EXCAVATION OF PITS.
- ALL PLANT MATERIAL SHALL BE NURSERY GROWN STOCK UNLESS OTHERWISE NOTED.
- TREES TO HAVE A MINIMUM 1800 CLEAR STEM ABOVE GRADE.
- PLACE SOD ON A MINIMUM 150mm TOPSOIL.
- CONTRACTOR TO MAKE GOOD ALL EXISTING AREAS DAMAGED BY HIS WORK TO THE SATISFACTION OF THE CITY OF OTTAWA.
- THE CITY WILL BE NOTIFIED IF ANY TREES CANNOT BE LOCATED OR PLANTED DUE TO CONFLICTS WITH UTILITIES OR DRIVEWAYS. THE REQUIRED TREES NOT PLANTED ARE SUBJECT TO TREE BANKING. THE FINAL NUMBER OF TREES TO BE BANKED WILL BE PROVIDED TO THE CITY FOLLOWING ALL PLANTINGS.
- ALL PLANT MATERIAL SHALL BE WARRANTIED FOR TWO YEARS FROM THE DATE OF PERFORMANCE ACCEPTANCE AS DETERMINED BY THE CITY OF OTTAWA.
- PERIODIC REVIEWS OF PLANTING SHALL BE CARRIED OUT BY THE LANDSCAPE ARCHITECT.
- PLANTINGS TO BE STAKED FOR APPROVAL PRIOR TO CONSTRUCTION

PLANTING NOTES:

- CONTRACTOR TO VERIFY LOCATION OF ALL SERVICES PRIOR TO ANY EXCAVATION.
- LOCATIONS OF ALL PLANT MATERIALS TO BE STAKED BY THE CONTRACTOR AND VERIFIED IN THE FIELD BY LANDSCAPE ARCHITECT PRIOR TO THE EXCAVATION OF PITS.
- ALL PLANT MATERIAL SHALL BE NURSERY GROWN STOCK UNLESS OTHERWISE NOTED.
- DECIDUOUS TREES TO HAVE A MINIMUM 1800 CLEAR STEM ABOVE GRADE.
- ALL PLANT MATERIAL SHALL BE WARRANTIED FOR TWO YEARS FROM THE DATE OF SUBSTANTIAL COMPLETION AS DETERMINED BY THE LANDSCAPE ARCHITECT.
- ALL STEEL T-BARS TO BE REMOVED AT THE ONE YEAR INTERIM INSPECTION UNLESS OTHERWISE DIRECTED BY THE LANDSCAPE ARCHITECT.
- CONTRACTOR TO REINSTATE ALL EXISTING AREAS DAMAGED BY HIS WORK TO THE SATISFACTION OF THE LANDSCAPE ARCHITECT.
- PERIODIC REVIEWS OF PLANTING SHALL BE CARRIED OUT BY THE LANDSCAPE ARCHITECT.
- ACER RUBRUM, QUERCUS RUBRA AND CELTIS OCCIDENTALIS TO BE SPRING DUG SPECIMENS AND PLANTING IN THE SPRING ONLY.
- ANY PROPOSED SUBSTITUTIONS OF PLANT SPECIES SHALL BE MADE WITH PLANTS OF EQUIVALENT OVERALL FORM, HEIGHT, BRANCHING HABIT, FLOWER, LEAF, COLOR, FRUIT AND CULTURE AND ONLY AFTER APPROVAL OF THE LANDSCAPE ARCHITECT.
- TREE STAKING IS NOT RECOMMENDED WITHIN A 10m RADIUS OF THE PLAY EQUIPMENT.

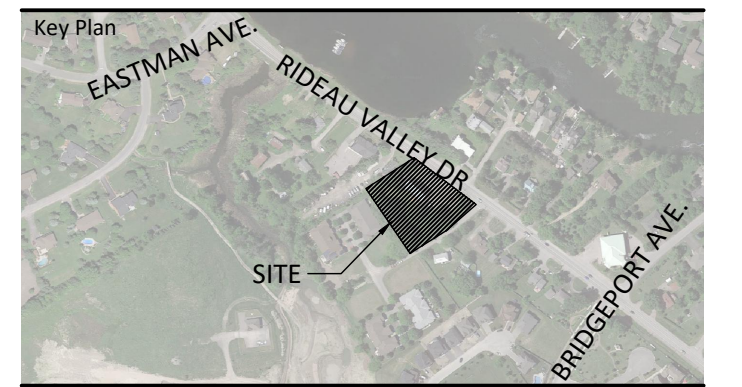
SOD & SEED NOTES:

- SODDED AND SEEDED AREAS SHALL HAVE A MINIMUM 150mm TOPSOIL.
- ALL SEED MUST BE FROM A RECOGNIZED SEED FIRM, MEETING THE REQUIREMENTS FOR THE SEEDS ACT FOR CANADA NO. 1 SEED. SEED SHALL BE CERTIFIED NO. 1 GRADE. A GERMINATION TEST MAY BE REQUESTED AND ALL LAWN SEED MUST COMPLY WITH FEDERAL AND PROVINCIAL SEED LAWS.
- INSTALL STANDARD MIXTURE BY MECHANICAL SEEDING. USE BIODEGRADABLE EROSION CONTROL MAT AS DIRECTED BY LANDSCAPE ARCHITECT TO RETAIN SEED ON STEEP SLOPES (OVER 3:1 UNTIL ESTABLISHED).
- PLANT SEED AT A DEPTH EQUAL TO THE WIDEST THICKNESS OF THE SEED. GENERALLY THIS IS 6mm (1/4") OR AS PER SUPPLIERS RECOMMENDATIONS.
- GENTLY TAMP OR ROLL THE SEEDBED AND DO NOT COMPACT THE SOIL. EXCESSIVE FORCE WILL DESTROY THE SOIL STRUCTURE AND INHIBIT GERMINATION.
- CUT THE GRASS TO 50mm WHENEVER IT REACHES THE HEIGHT OF 70mm. REMOVE CLIPPINGS THAT WILL SMOTHER GRASS.
- SODDED AND SEEDED AREAS WILL BE ACCEPTED BY THE LANDSCAPE ARCHITECT FOLLOWING PERFORMANCE ACCEPTANCE, PROVIDED:
 - SEEDED AREAS ARE PROPERLY ESTABLISHED.
 - TURF IS FREE OF DEAD SPOTS AND WEEDS.
 - NO SURFACE SOIL IS VISIBLE WHEN GRASS HAS BEEN CUT TO A HEIGHT OF 50mm
 - TURF AREAS HAVE BEEN CUT NO LESS THAN TWICE (MINIMUM), THE LAST CUT BEING CARRIED OUT WITHIN 24 HOURS PRIOR TO THE ACCEPTANCE INSPECTION.

PLANT LIST

KEY	QTY.	BOTANICAL NAME	COMMON NAME	CAL/HT.	ROOT
DECIDUOUS TREES					
AR	4	ACER RUBRUM	RED MAPLE	60	B&B
GD	4	GYMNOCLADUS DIOICUS	KENTUCKY COFFEE TREE	70	B&B
QM	3	QUERCUS MACROCARPA	BUR OAK	70	B&B
NS	2	NYSSA SYLVATICA	SOURGUM	70	B&B
TA	3	TILIA AMERICANA	BASSWOOD	60	B&B
SMALL MULTI-STEM TREES					
AC	4	AMELANCHIER CANADENSIS	SERVICEBERRY	70	B&B
CONIFEROUS STREET TREES					
PS	4	PINUS STROBUS	WHITE PINE	200cm	B&B
DECIDUOUS SHRUBS					
Sj	26	SPIRAEA JAPONICA 'GOLDFLAME'	GOLDFLAME SPIREA		3 GAL.
GRASSES/PERENNIALS					
ca	20	CALAMAGROSTIS X ACUTIFLORA 'KARL FOERSTER'	KARL FOERSTER REED GRASS		1 GAL.
hms	101	HEMEROCALLIS 'MINI STELLA'	DAYLILY		1 GAL.

Contractor shall check all dimensions on the work and report any discrepancy to the Landscape Architect before proceeding. All drawings and specifications are the property of the Landscape Architect and must be returned at the completion of the work. This drawing is not to be used for construction until signed by the Landscape Architect.



LEGEND

--- PROPERTY LINE

FENCING

--- PRIVACY FENCE LOCATED 0.15M ON PRIVATE PROPERTY

SURFACING

C.I.P CONCRETE

UNIT PAVING

SOD

PLANTING

AR DECIDUOUS TREE

AC SMALL MULTI-STEM TREE

PS CONIFEROUS TREE

Sj DECIDUOUS SHRUB

ca GRASSES/PERENNIALS

hms GRASSES/PERENNIALS

GD DECIDUOUS TREE

QM DECIDUOUS TREE

NS DECIDUOUS TREE

TA DECIDUOUS TREE

TA DECIDUOUS TREE

TA DECIDUOUS TREE

TA DECIDUOUS TREE

TA DECIDUOUS TREE

TA DECIDUOUS TREE

TA DECIDUOUS TREE

TA DECIDUOUS TREE

TA DECIDUOUS TREE

TA DECIDUOUS TREE

TA DECIDUOUS TREE

TA DECIDUOUS TREE

TA DECIDUOUS TREE

TA DECIDUOUS TREE

TA DECIDUOUS TREE

TA DECIDUOUS TREE

TA DECIDUOUS TREE

TA DECIDUOUS TREE

TA DECIDUOUS TREE

TA DECIDUOUS TREE

TA DECIDUOUS TREE

TA DECIDUOUS TREE

TA DECIDUOUS TREE

TA DECIDUOUS TREE

TA DECIDUOUS TREE

TA DECIDUOUS TREE

TA DECIDUOUS TREE

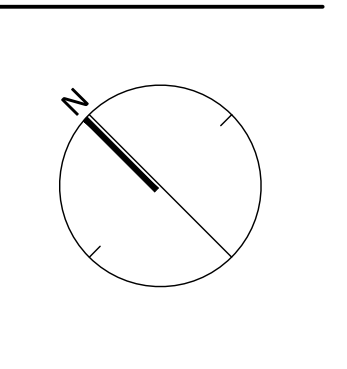
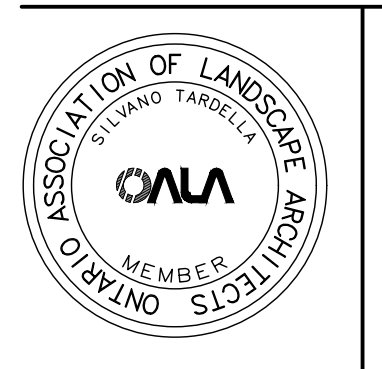
TA DECIDUOUS TREE

TA DECIDUOUS TREE

TA DECIDUOUS TREE

TA DECIDUOUS TREE

TA DECIDUOUS TREE

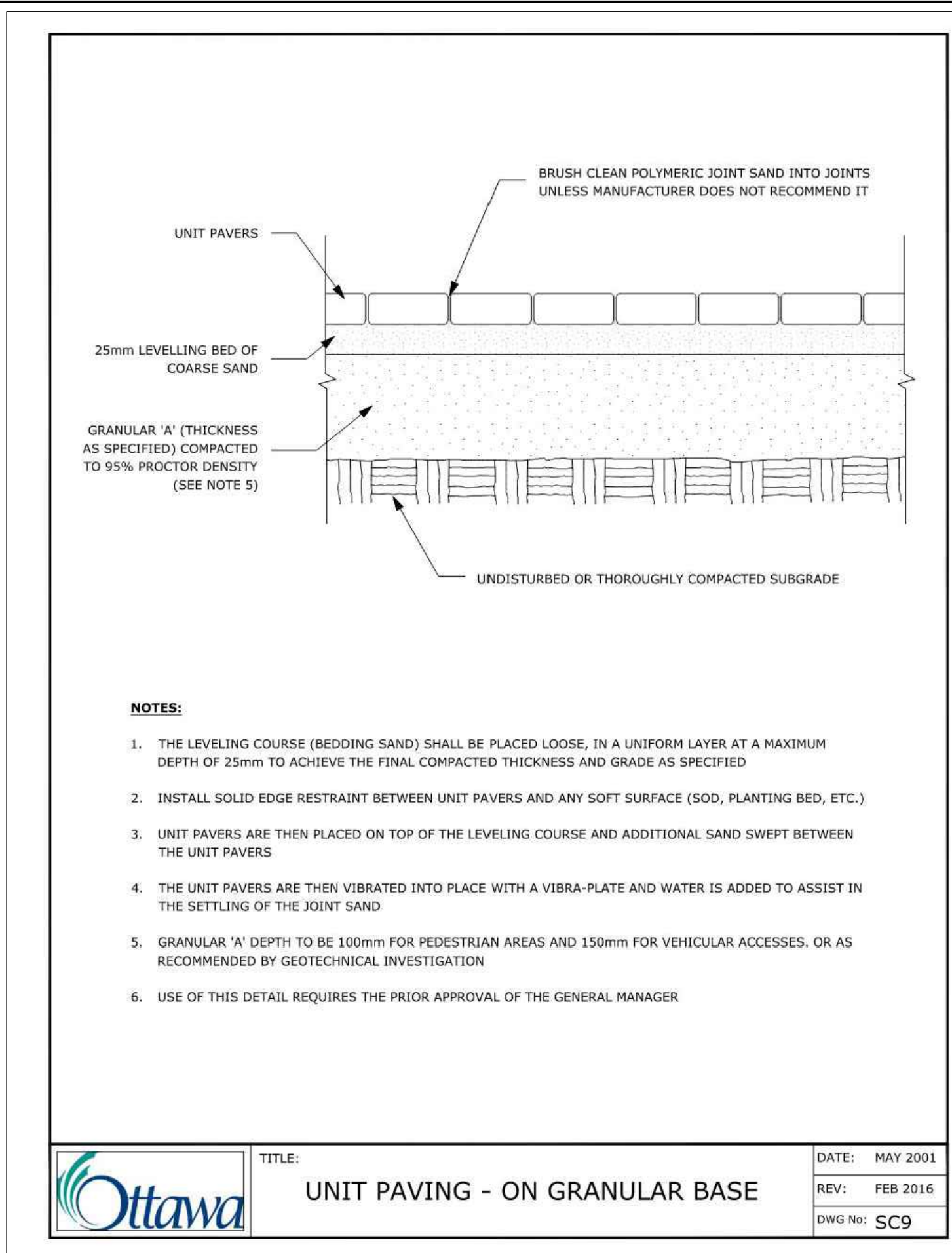


NAK
design strategies

1285 WELLINGTON STREET, OTTAWA, ON K1Y 3A8 CANADA
T 613.237.2345 NAKDESIGNSTRATEGIES.COM

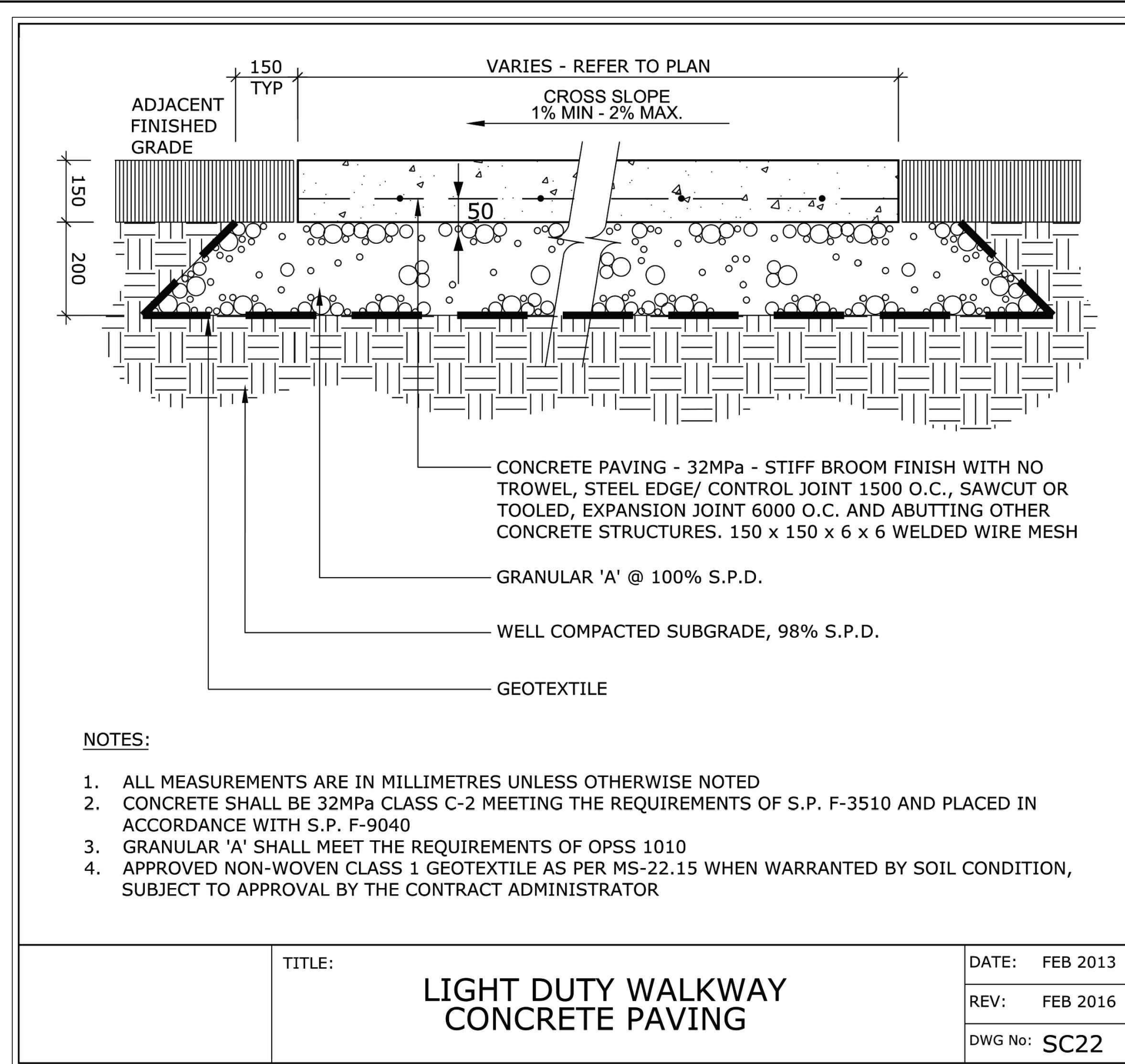
Manotick Main Development
5646 Manotick Main Street

Title	SITE PLAN
Date	2023-05-16
Scale	1:150
Drawn	EL
Checked	MK
Job No.	23-088
Sheet	L01



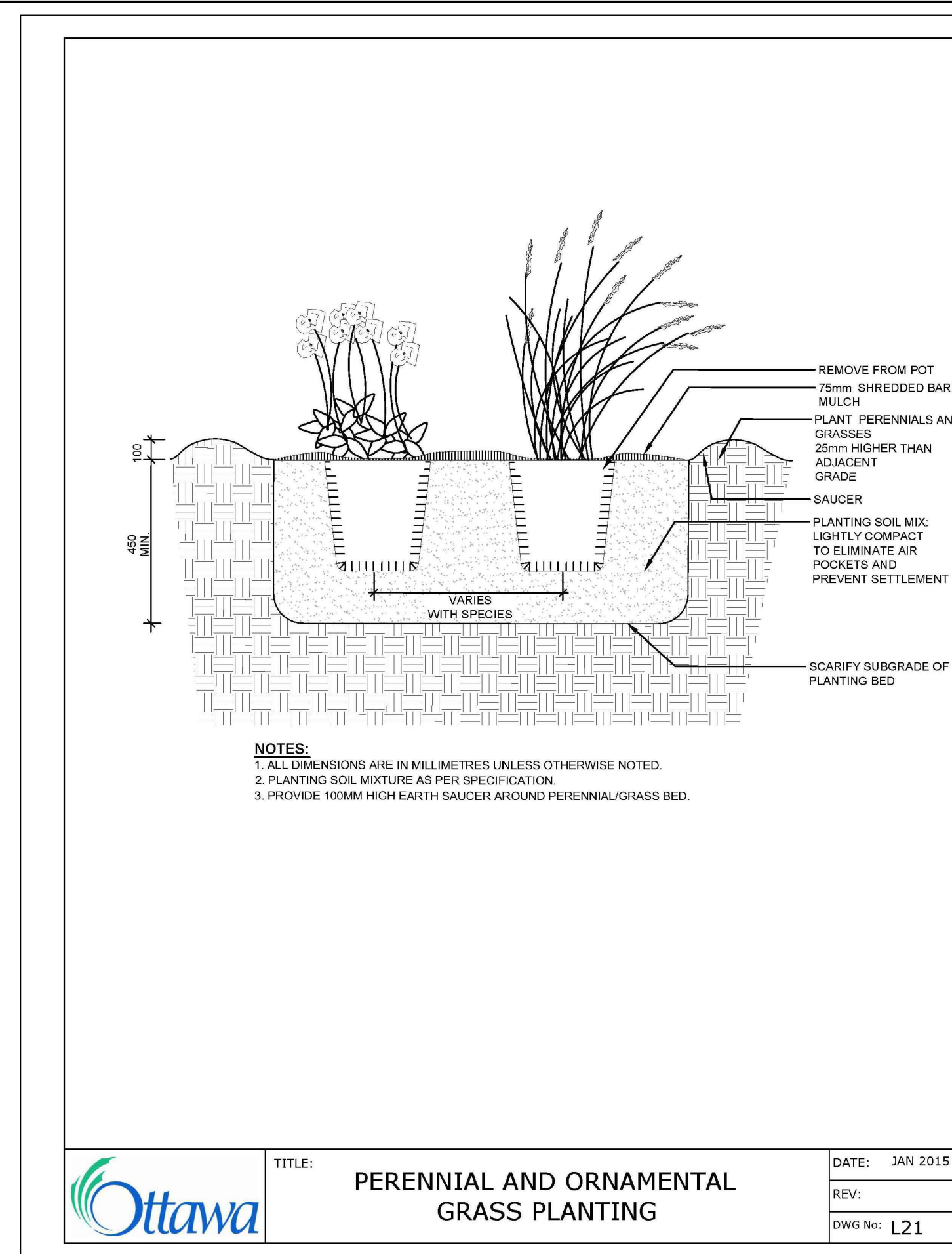
Ottawa TITLE: UNIT PAVING - ON GRANULAR BASE DATE: MAY 2001
 REV: FEB 2016
 DWG No: SC9

1 UNIT PAVING
N.T.S.



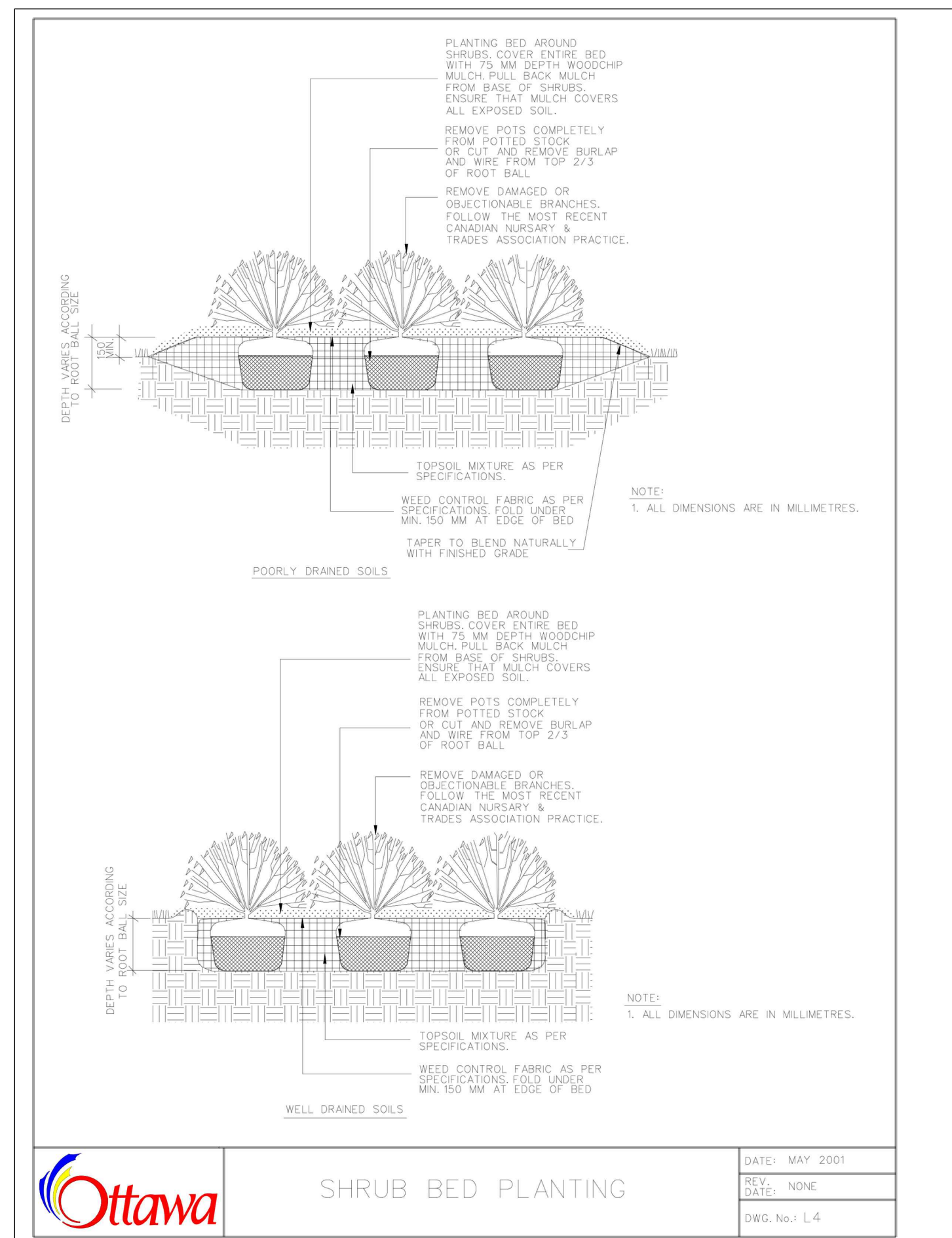
Ottawa TITLE: LIGHT DUTY WALKWAY CONCRETE PAVING DATE: FEB 2013
 REV: FEB 2016
 DWG No: SC22

2 LIGHT DUTY CONCRETE PAVING
N.T.S.



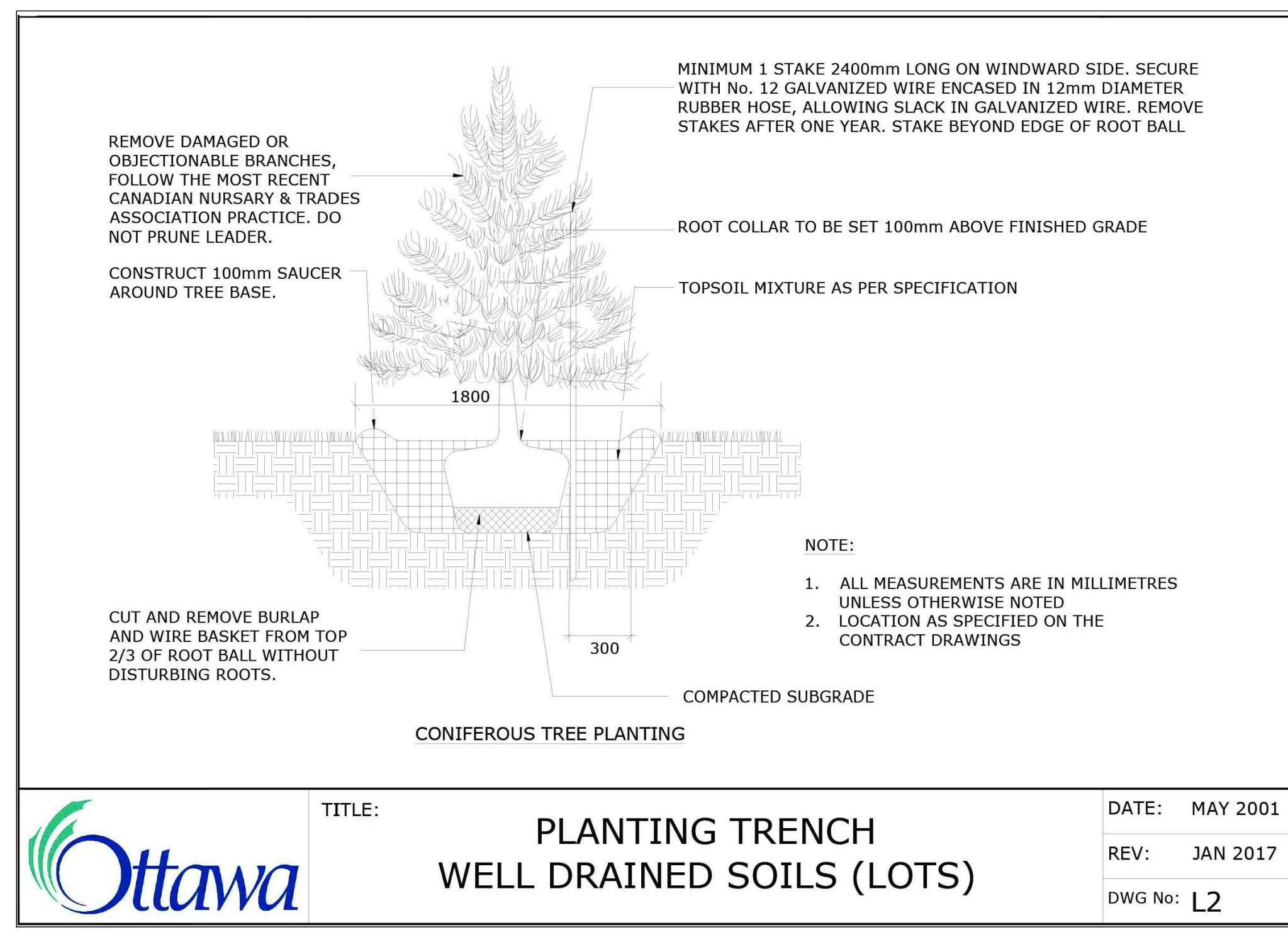
Ottawa TITLE: PERENNIAL AND ORNAMENTAL GRASS PLANTING DATE: JAN 2015
 REV:
 DWG No: L21

3 PERENNIAL/GRASS PLANTING
N.T.S.



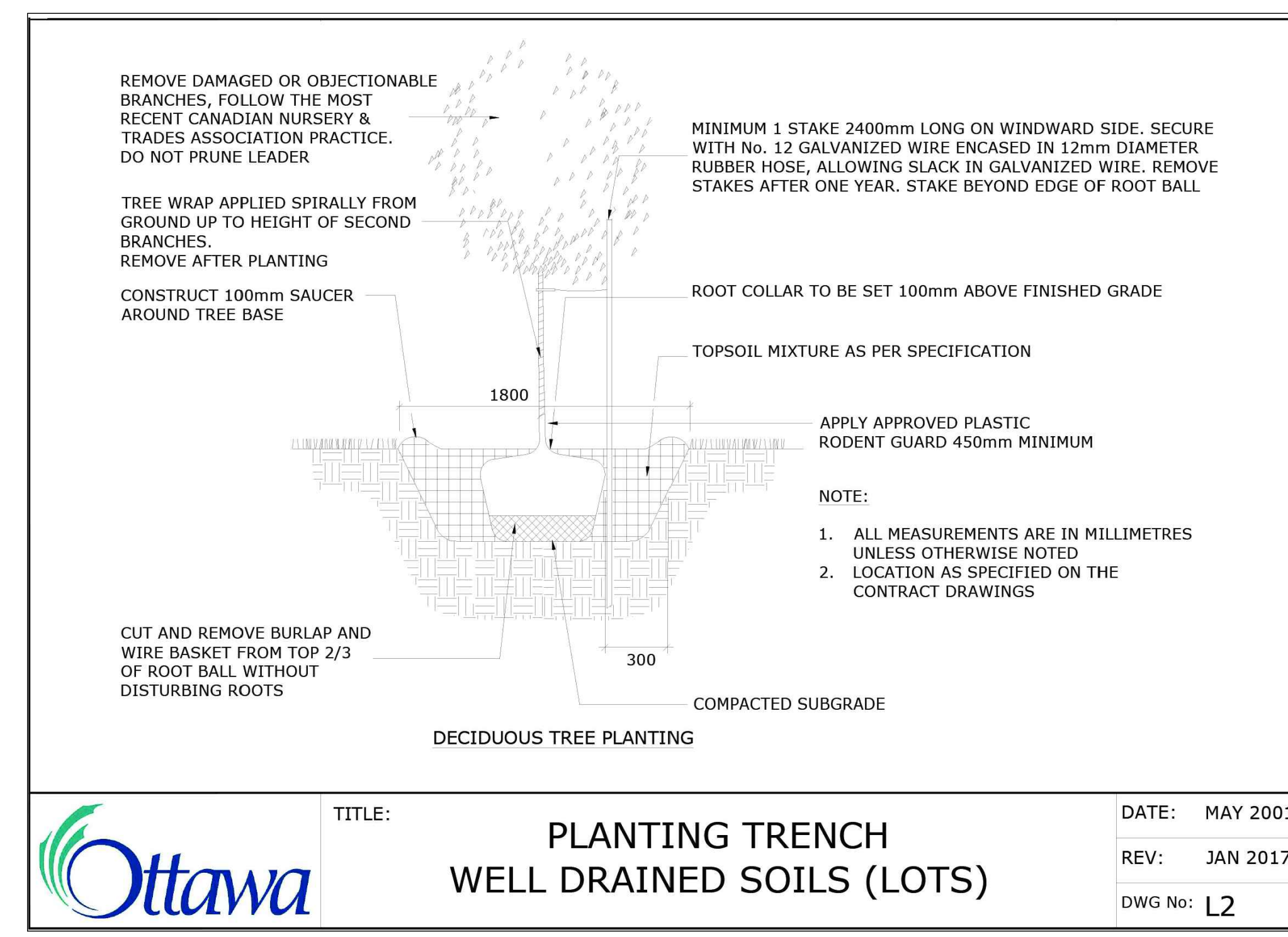
Ottawa TITLE: SHRUB BED PLANTING DATE: MAY 2001
 REV: NONE
 DWG No: L4

4 SHRUB PLANTING
N.T.S.



Ottawa TITLE: PLANTING TRENCH WELL DRAINED SOILS (LOTS) DATE: MAY 2001
 REV: JAN 2017
 DWG No: L2

5 CONIFEROUS TREE PLANTING
N.T.S.



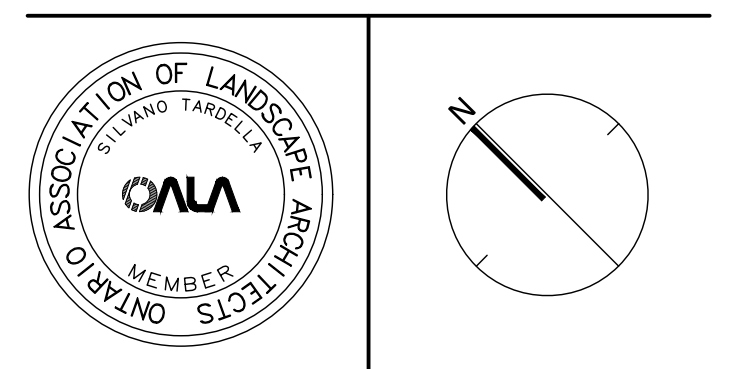
Ottawa TITLE: PLANTING TRENCH WELL DRAINED SOILS (LOTS) DATE: MAY 2001
 REV: JAN 2017
 DWG No: L2

6 DECIDUOUS TREE PLANTING
N.T.S.

Contractor shall check all dimensions on the work and report any discrepancy to the Landscape Architect before proceeding. All drawings and specifications are the property of the Landscape Architect and must be returned at the completion of the work. This drawing is not to be used for construction until signed by the Landscape Architect.

Key Plan

2	Issued for First Submission	2023/06/09
1	Issued for Client Review	2023/05/19
No.	Description	Date
Revision		
City Approval Stamp		

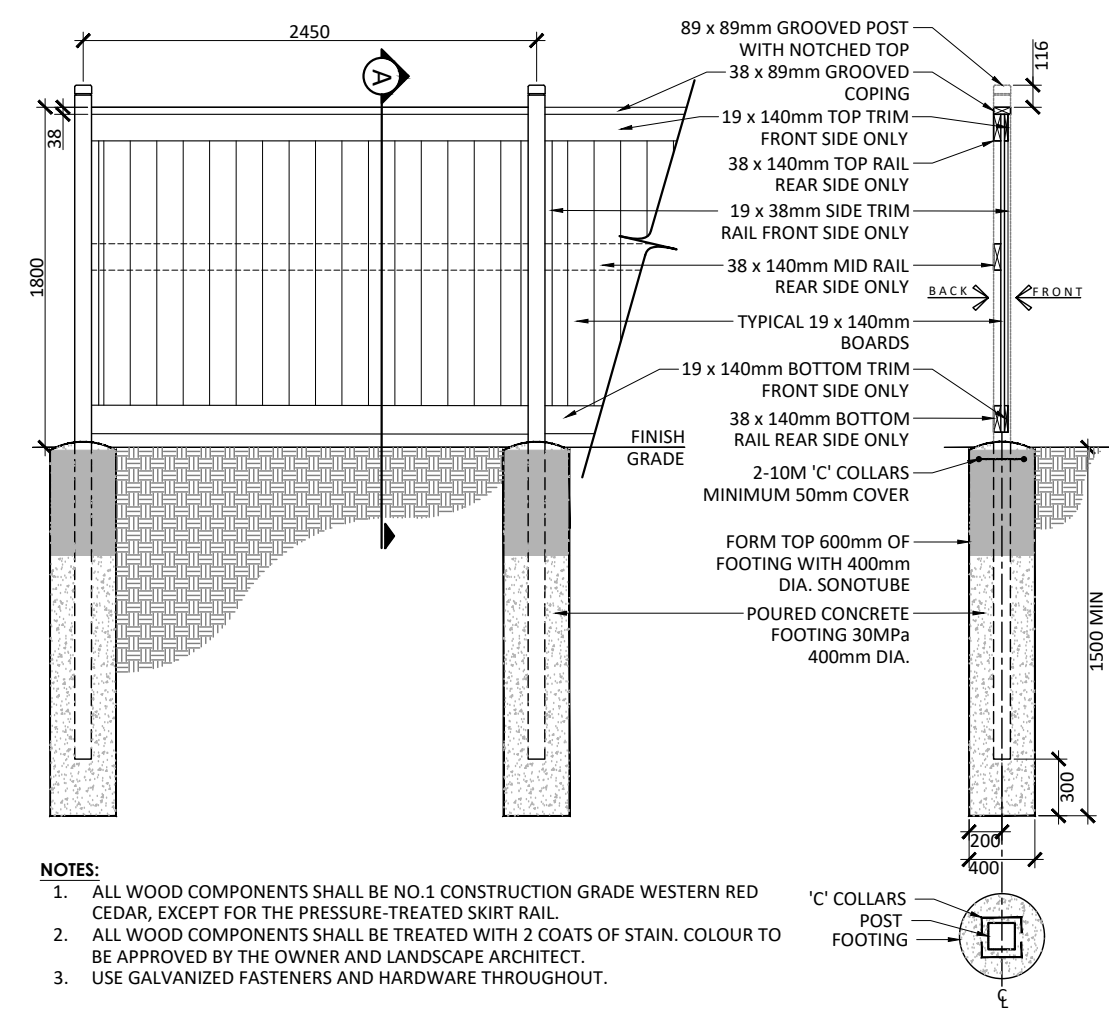


NAK design strategies
 1285 WELLINGTON STREET, OTTAWA, ON K1Y 3A8 CANADA
 T 613.237.2345 NAKDESIGNSTRATEGIES.COM
 Project

Manotick Main Development
 5646 Manotick Main Street

Title: DETAILS

Date	2023-05-16	Sheet	L02
Scale	1:150		
Drawn	EL		
Checked	MK		
Job No.	23-088		



- NOTES:
1. ALL WOOD COMPONENTS SHALL BE NO.1 CONSTRUCTION GRADE WESTERN RED CEDAR, EXCEPT FOR THE PRESSURE-TREATED SKIRT RAIL.
 2. ALL WOOD COMPONENTS SHALL BE TREATED WITH 2 COATS OF STAIN, COLOUR TO BE APPROVED BY THE OWNER AND LANDSCAPE ARCHITECT.
 3. USE GALVANIZED FASTENERS AND HARDWARE THROUGHOUT.

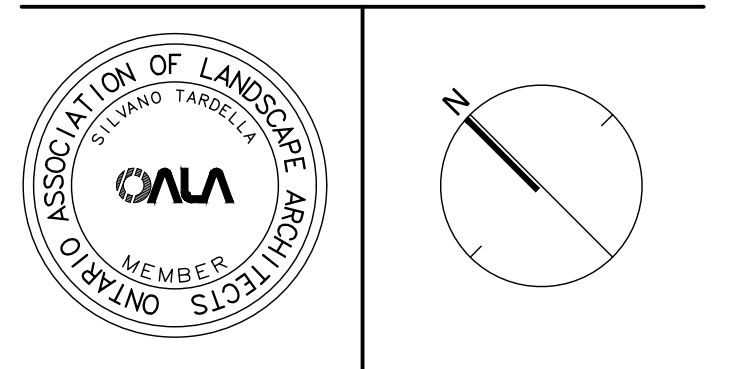
1 1.8m PRIVACY FENCE
 1:40

Contractor shall check all dimensions on the work and report any discrepancy to the Landscape Architect before proceeding. All drawings and specifications are the property of the Landscape Architect and must be returned at the completion of the work. This drawing is not to be used for construction until signed by the Landscape Architect.

Key Plan

-		
-		
-		
-		
-		
2	Issued for First Submission	2023/06/09
1	Issued for Client Review	2023/05/19
No.	Description	Date

Revision
 City Approval Stamp



NAK design strategies
 1285 WELLINGTON STREET, OTTAWA, ON K1Y 3A8 CANADA
 T 613.237.2345 NAKDESIGNSTRATEGIES.COM
 Project

Manotick Main Development
 5646 Manotick Main Street

Title
 DETAILS

Date	2023-05-16	Sheet
Scale	1:150	L03
Drawn	EL	
Checked	MK	
Job No.	23-088	