

GRUPE ORADEV INC.

Legend / légende

- SCOPE OF APPLICATION
- MEDIUM DECIDUOUS TREE (REFER TO PLANTING SCHEDULE FOR SPECIES AND QUANTITIES)
- LARGE DECIDUOUS TREE (REFER TO PLANTING SCHEDULE FOR SPECIES AND QUANTITIES)
- PROPOSED SHRUB / PERENNIAL MASSING PLANTING
- PROPOSED CONCRETE PAVING - REFER TO DETAIL 1&2-L5
- PROPOSED CONCRETE UNIT PAVING - REFER TO DETAIL 3&4-L5
- PROPOSED SOD
- PROPOSED BIKE RACK - REFER TO DETAIL 4-L6
- 2.1m HIGH WOOD PRIVACY FENCE

PRELIMINARY
 NOT FOR CONSTRUCTION

03	issued for SPA	2023/06/10
02	issued for internal coordination	2023/06/08
01	issued for internal coordination	2023/05/30
00	issued for OPA and ZBLA submission	2022/10/20

FOTENN Planning + Design
 396 Cooper Street, Suite 300
 Ottawa, ON, CANADA K2P 2H7
 613.730.5709
 fotenn.com

north / le nord stamp / le cachet

project / projet

400 COVENTRY ROAD

drawing / dessin

LANDSCAPE LAYOUT / PLANTING PLAN

designed / conçu	drawn / dessiné	reviewed / examiné
OM	OM	DF
date	project number / No. du projet	
OCT 2022		

drawing number / No. du dessin

L1 of 6

PLANTING SCHEDULE

KEY	QTY.	BOTANICAL NAME	COMMON NAME	SIZE / CONDITION / SPACING
DECIDUOUS TREES				
AF	7	Acer x freemanii	Freeman's Maple	50mm cal. / W.B.
BP	6	Betula papyrifera	Paper Birch	50mm cal. / W.B., (single stem, tree form)
GB	10	Ginkgo biloba	Maidenhair Tree	50mm cal. / W.B.
GD	1	Gymnocladus dioica	Kentucky Coffee Tree	50mm cal. / W.B.
GT	7	Gleditsia triacanthos var. inermis 'shademaster'	Shademaster Honeylocust	50mm cal. / W.B.
QM	5	Quercus macrocarpa	Burr Oak	50mm cal. / W.B.
QR	6	Quercus rubra	Red Oak	50mm cal. / W.B.
UA	3	Ulmus americana 'Princeton'	Princeton Elm	50mm cal. / W.B.
CONIFEROUS TREES				
AB	8	Abies balsamea	Balsam Fir	200cm ht. / W.B.
PG	7	Picea glauca	White Spruce	200cm ht. / W.B.
TO	7	Thuja occidentalis	Eastern White Cedar	200cm ht. / W.B.
DECIDUOUS SHRUBS				
Cs	28	Cornus sericea Arctic Fire 'Farrow'	Arctic Fire Red Osier Dogwood	#3 Pot / 1.0m sp.
Hv	38	Hamamelis vernalis	Vernal Witchhazel	#3 Pot / 2.0m sp.
Ra	35	Rhus aromatica 'Gro-Low'	Fragrant Sumac	#3 Pot / 1.0m sp.
CONIFEROUS SHRUBS				
Tc	58	Taxus cuspidata 'Nana'	Dwarf Japanese Yew	#3 Pot / 1.0m sp.
PERENNIALS & GRASSES				
ca	62	Calamagrostis acutiflora 'Karl Foerster'	Feather Reed Grass	#2 Pot / 60cm o.c.
cm	155	Carex muskingumensis	Palm Sedge	tray / 50cm o.c.
cp	70	Carex pensylvanica	Oak Sedge	tray / 50cm o.c.
ep	97	Echinacea purpurea	Coneflower	#1 Pot / 45cm o.c.
he	171	Hemerocallis 'Purple de Oro'	Purple D'Oro Daylily	#1 Pot / 35cm o.c.
ho	97	Hosta 'Blue Cadet'	Blue Cadet Hosta	#2 Pot / 80cm o.c.
pvs	120	Paricum virgatum 'Prairie Fire'	Prairie Fire Switch Grass	#2 Pot / 60cm o.c.
pa	50	Peroovskia x 'Little Spire'	Russian Sage	#2 Pot / 60cm o.c.
rh	36	Rudbeckia hirta	Black-eyed Susan	#1 Pot / 60cm o.c.
sh	42	Sporobolus heterolepis	Prairie Dropseed	#2 Pot / 60cm o.c.

NOTES:

DO NOT SCALE DRAWINGS;

NOTES ARE APPLICABLE TO ALL DRAWINGS IN THE SET;

Fotenn Consultants Inc. IS NOT RESPONSIBLE FOR ACCURACY OF BASE INFORMATION;

REFER TO CIVIL ENGINEERING DRAWINGS FOR GRADING & SITE SERVICING INFORMATION;

THE CONTRACTOR IS RESPONSIBLE FOR CONFIRMING SITE CONDITIONS AND REPORTING ANY DISCREPANCIES TO THE LANDSCAPE ARCHITECT;

THE CONTRACTOR IS RESPONSIBLE FOR CONFIRMING EXACT LOCATIONS OF ALL UNDERGROUND SERVICES AND OBTAINING CLEARANCE FROM ALL APPLICABLE UTILITIES. PROPOSED WORKS FOUND TO BE IN CONFLICT WITH UNDERGROUND SERVICES MAY BE ADJUSTED AT THE DIRECTION OF THE LANDSCAPE ARCHITECT;

LANDSCAPE ELEMENTS SHOWN ARE SUBJECT TO THE FINAL LOCATION OF UNDERGROUND SERVICES AND UTILITIES;

DO NOT INSTALL TREES ON PROPERTY / LOT LINES OR WITHIN DRAINAGE EASEMENTS;

PERFORM WORK IN ACCORDANCE WITH DETAILS AND SPECIFICATIONS;

ALL PLANT MATERIAL SHALL BE No. 1 NURSERY STOCK AND SHALL MEET OR EXCEED THE SPECIFICATION OF THE Canadian Standards for Nursery Stock, AS PUBLISHED BY THE Canadian Nursery Landscape Association;

SPECIES SUBSTITUTIONS ARE NOT PERMITTED WITHOUT PRIOR WRITTEN APPROVAL OF THE LANDSCAPE ARCHITECT;

ALL UN-PAVED SURFACES TO RECEIVE 150mm DEPTH TOPSOIL & SOD.

STANDARDS FOR TREE PLANTING:

NO PLANTING ON CORNERS OR ANYWHERE WHERE IT WOULD CREATE A SIGHT LINE CONCERN;

MAINTAIN A MINIMUM DISTANCE OF 2.5m FROM THE CURB FOR DECIDUOUS TREES AND 4.5m FOR CONIFEROUS TREES;

MAINTAIN A MINIMUM DISTANCE OF 1.5m FOR DECIDUOUS (4.5m FOR CONIFERS) FROM ANY SIDEWALK OR PRIVATE WALKWAY;

MAINTAIN A MINIMUM DISTANCE OF 1.2m FROM ALL DRIVEWAYS;

MAINTAIN A MINIMUM DISTANCE OF 2.5m FROM COMMUNITY MAILBOXES, LIGHT STANDARDS, FIRE HYDRANTS AND NO PLANTING IN FRONT OF HYDRANTS;

MAINTAIN A MINIMUM DISTANCE OF 3.0m FROM ALL HYDRO TRANSFORMERS;

MAINTAIN A MINIMUM DISTANCE OF 1.0m FROM ALL UNDERGROUND SERVICES;

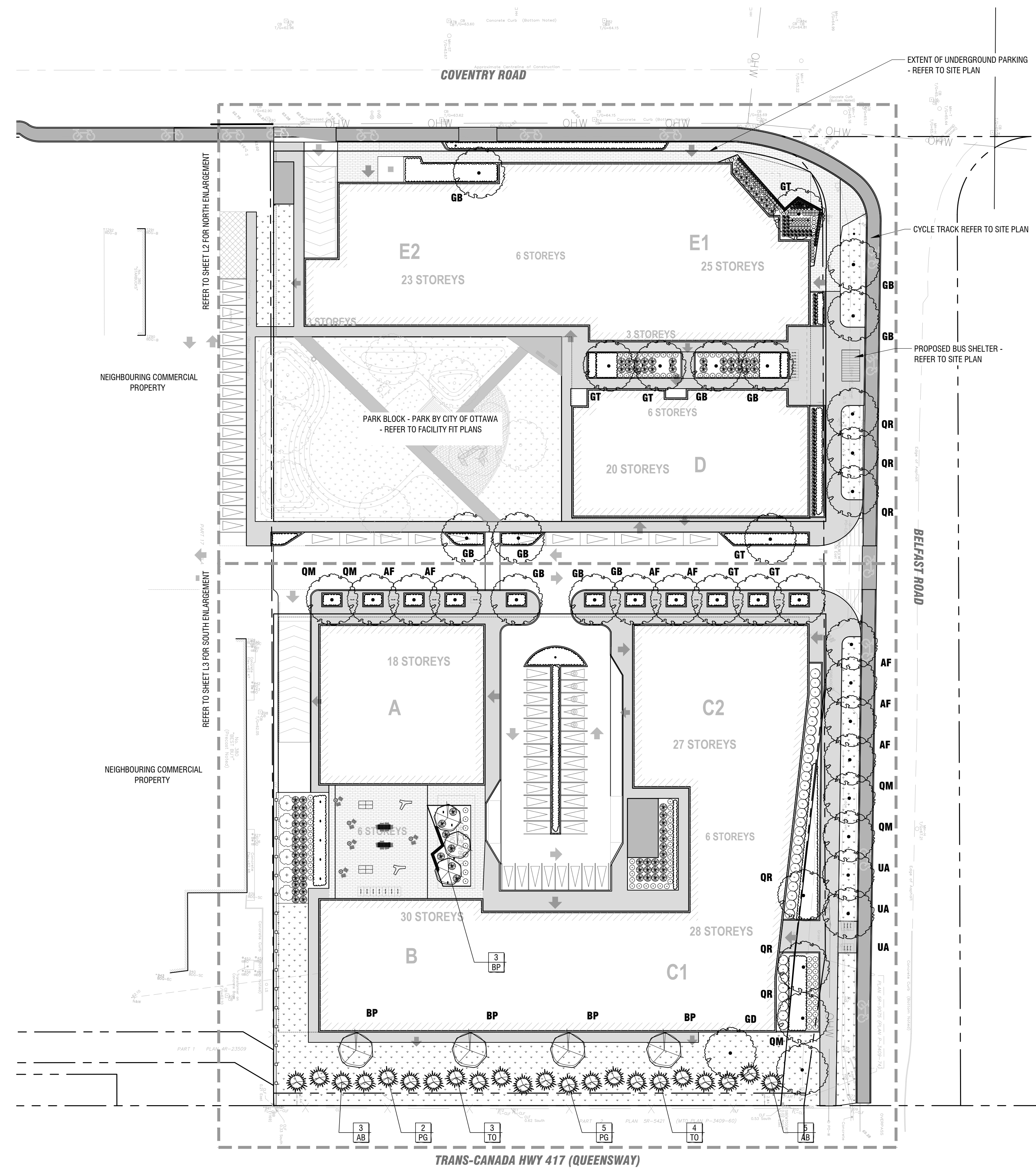
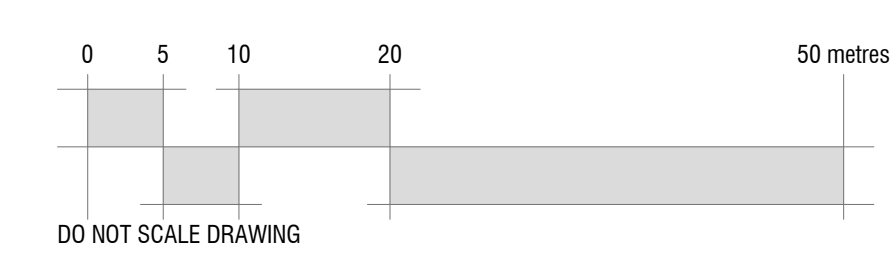
MAINTAIN A MINIMUM DISTANCE OF 1.0m FROM ALL BELL AND CABLE BOXES;

MAINTAIN A MINIMUM DISTANCE OF 10.0 FROM BUS SHELTERS

IMPORTANT NOTICE FOR CONTRACTOR:

THE CITY OF OTTAWA REQUIRES A Certificate of Completion (F1) Landscape Works TO BE SUBMITTED AND SEALED BY THE LANDSCAPE ARCHITECT. CONTRACTORS ARE RESPONSIBLE FOR FAMILIARIZING THEMSELVES WITH THE REQUIREMENTS OF THIS PROCESS AND PROVIDING SUFFICIENT NOTICE TO THE LANDSCAPE ARCHITECT TO CONDUCT SITE REVIEWS DURING INSTALLATION OF TREES. THE 1 YEAR WARRANTY PERIOD SHALL NOT COMMENCE UNTIL THE LANDSCAPE ARCHITECT HAS SUBMITTED THE F1 Certificate.


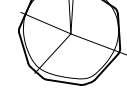

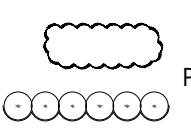

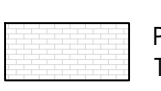
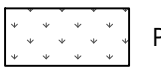

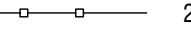
PRIOR TO INSTALLATION OF TREES, THE DEVELOPER WILL CONTACT THE PLANNING AND GROWTH MANAGEMENT AND FORESTRY SERVICES TO REVIEW THE SPECIES AND LOCATION OF TREES.



1 LANDSCAPE LAYOUT / PLANTING PLAN
L1 1:500

GROUPE ORADEV INC.

Legend / légende


-  SCOPE OF APPLICATION
-  MEDIUM DECIDUOUS TREE (REFER TO PLANTING SCHEDULE FOR SPECIES AND QUANTITIES)
-  LARGE DECIDUOUS TREE (REFER TO PLANTING SCHEDULE FOR SPECIES AND QUANTITIES)
-  PROPOSED SHRUB / PERENNIAL MASSING PLANTING
-  PROPOSED CONCRETE PAVING - REFER TO DETAIL 1&2-L5
-  PROPOSED CONCRETE UNIT PAVING - REFER TO DETAIL 3&4-L5
-  PROPOSED SOD
-  PROPOSED BIKE RACK - REFER TO DETAIL 4-L6
-  2.1m HIGH WOOD PRIVACY FENCE

PRELIMINARY
 NOT FOR CONSTRUCTION

rev'n	description / la description	yyyy/mm/dd
03	issued for SPA	2023/06/10
02	issued for internal coordination	2023/06/08
01	issued for internal coordination	2023/05/30
00	issued for OPA and ZBLA submission	2022/10/20

FOTENN Planning + Design
 396 Cooper Street, Suite 300
 Ottawa, ON, CANADA K2P 2H7
 613.730.5709
 fotenn.com

north / le nord stamp / le cachet



project / projet

400 COVENTRY ROAD

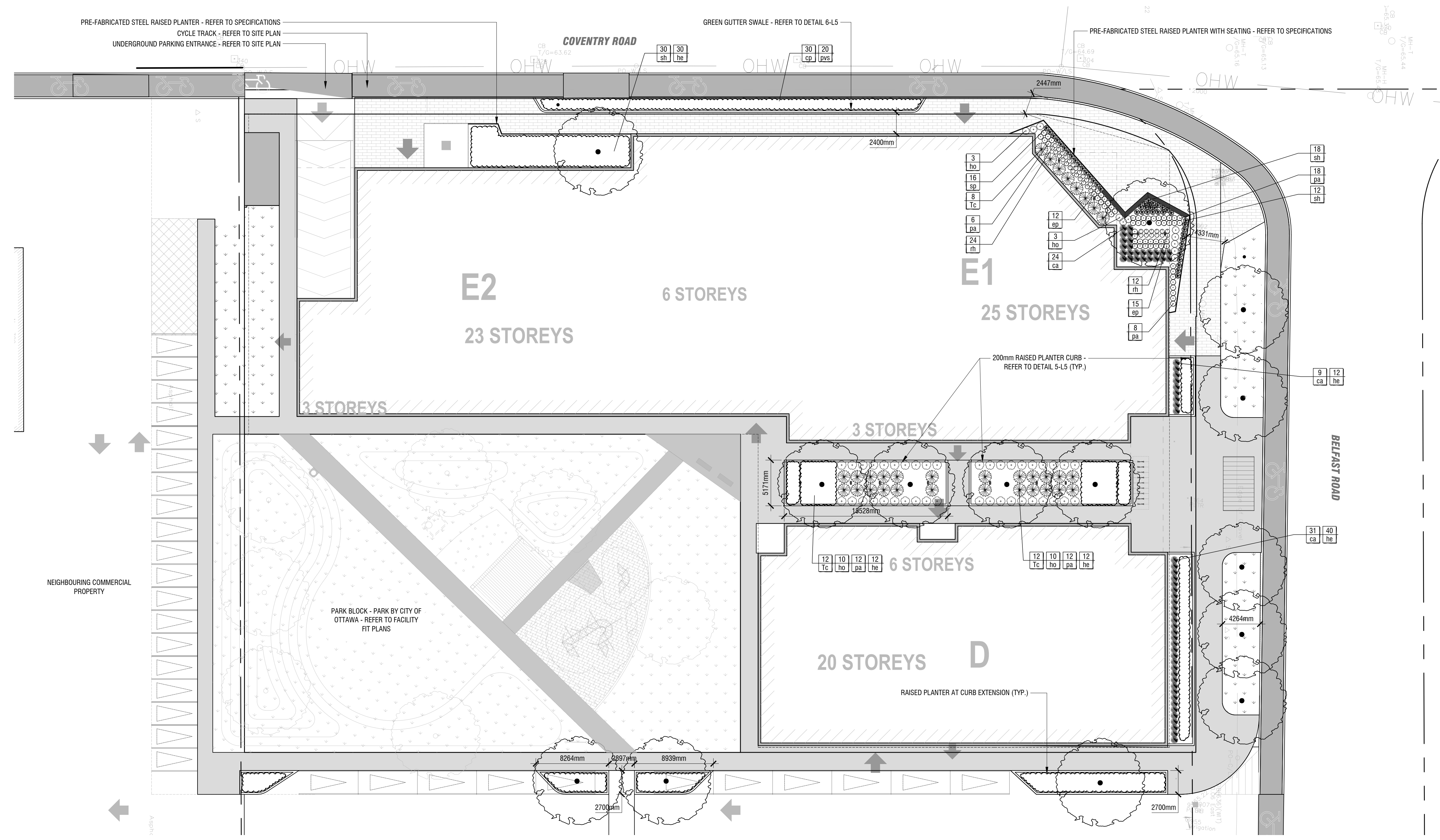
drawing / dessin

NORTH ENLARGEMENT PLAN

designed / conçu	drawn / dessiné	reviewed / examiné
OM	OM	DF
date / date		
OCT 2022		
project number / No. du projet		

drawing number / No. du dessin

L2 of 6



1 NORTH ENLARGEMENT
L1 1:500

PLOT INFORMATION: DWG NAME: P:\PROJECTS\400 Coventry Road\400 Coventry Road\Landscaping\DESIGN\DEVELOPMENT\100 DRAWINGS\Schematics - 400 Coventry Rd - LPLAN.dwg PLOT DATE: 2023-05-09 2:35:05 PM SHEET SIZE: ISO full sheet A1 (594.0x 841.0 MM) PLOTTED BY: Owen Moynihan LAST SAVED BY: moynihan

GROUPE ORADEV INC.

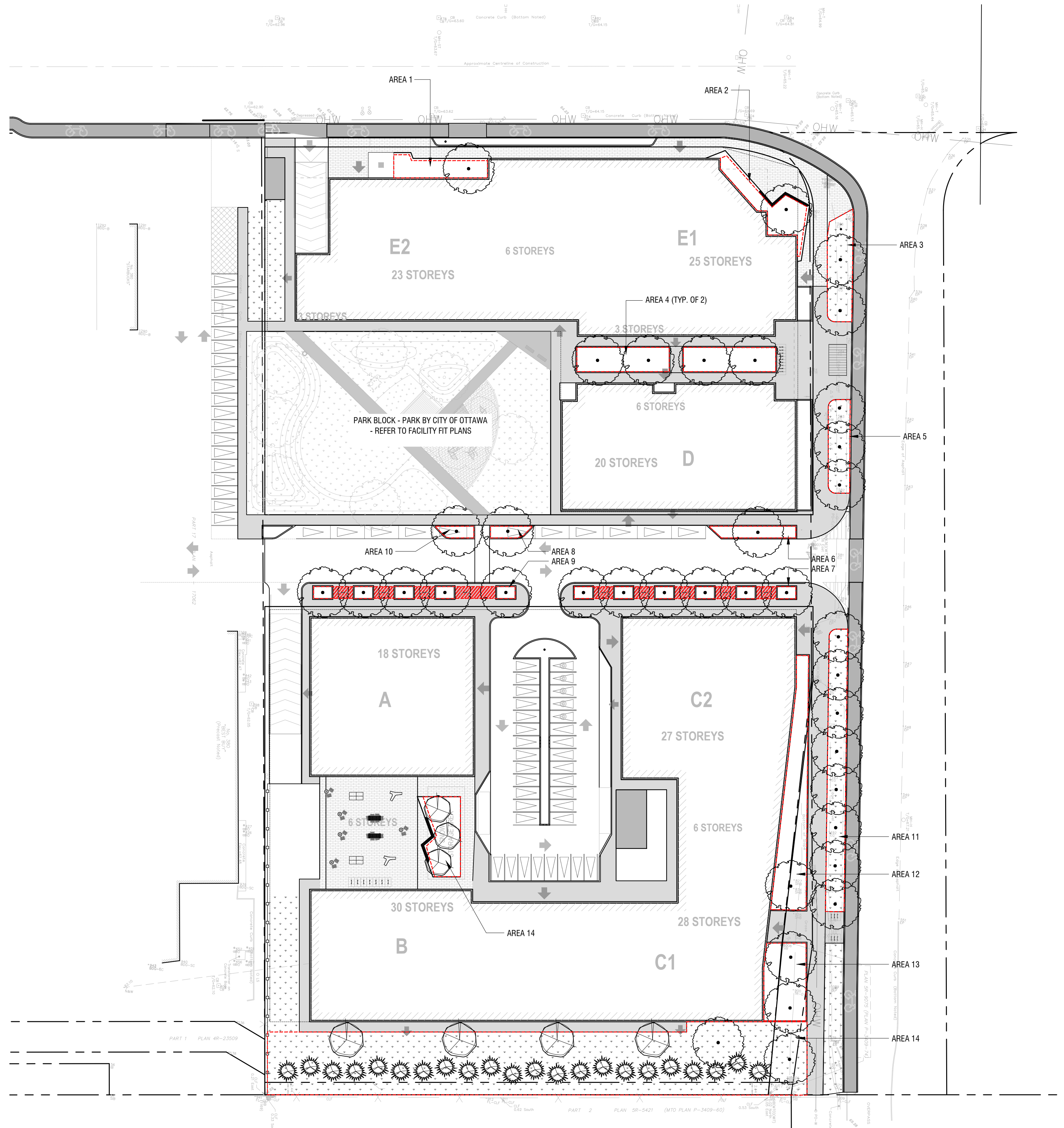
Legend / légende

- SCOPE OF APPLICATION
- MEDIUM DECIDUOUS TREE (REFER TO PLANTING SCHEDULE FOR SPECIES AND QUANTITIES)
- LARGE DECIDUOUS TREE (REFER TO PLANTING SCHEDULE FOR SPECIES AND QUANTITIES)
- PROPOSED SHRUB / PERENNIAL MASSING PLANTING
- PROPOSED CONCRETE PAVING - REFER TO DETAIL 1&2-L5
- PROPOSED CONCRETE UNIT PAVING - REFER TO DETAIL 3&4-L5
- PROPOSED SOD
- PROPOSED BIKE RACK - REFER TO DETAIL 4-L6
- 2.1m HIGH WOOD PRIVACY FENCE
- SOIL VOLUME AREA CALCULATION
- SOIL CELL EXTENT

SOIL VOLUME CHART			
AREA #	SOIL AREA (m ³)	TREE QTY.	SOIL VOLUME PER TREE (m ³)
1	43	1	43
2	55	1	55
3	100	3	33
4	56	2	28
5	92	2	46
6	43	1	43
7	122	6	20
8	30	1	30
9	163	5	33
10	30	1	30
11	241	8	30
12	217	1	217
13	125	2	63
14	1628	27	60
15	93	3	31

NOTES:
REFER TO PLAN FOR CORRESPONDING SOIL VOLUME TREE PLANTING AREAS
AREAS 7 AND 9 FEATURE SOIL CELLS - REFER TO PLAN AND DETAILS
AS PER CITY OF OTTAWA REQUIREMENTS:
• MEDIUM TREES TO HAVE MIN. 25m³ AS A SINGLE TREE OR 15m³ IN A SHARED SOIL PIT
• CONIFEROUS TREES TO HAVE MIN. 25m³ AS A SINGLE TREE OR 15m³ IN A SHARED SOIL PIT
• LARGE TREES TO HAVE MIN. 30m³ AS A SINGLE TREE OR 18m³ IN A SHARED SOIL PIT

PRELIMINARY
NOT FOR CONSTRUCTION



rev'n	description / la description	yyyy/mm/dd
03	issued for SPA	2023/06/10
02	issued for internal coordination	2023/06/08
01	issued for internal coordination	2023/05/30
00	issued for OPA and ZBLA submission	2022/10/20

FOTENN Planning + Design
396 Cooper Street, Suite 300
Ottawa, ON, CANADA K2P 2H7
613.730.5709
fotenn.com

north / le nord stamp / le cachet

project / projet
400 COVENTRY ROAD

drawing / dessin

SOIL VOLUME PLAN

designed / conçu	drawn / dessiné	reviewed / examiné
OM	OM	DF
date	project number / No. du projet	
OCT 2022		

drawing number / No. du dessin

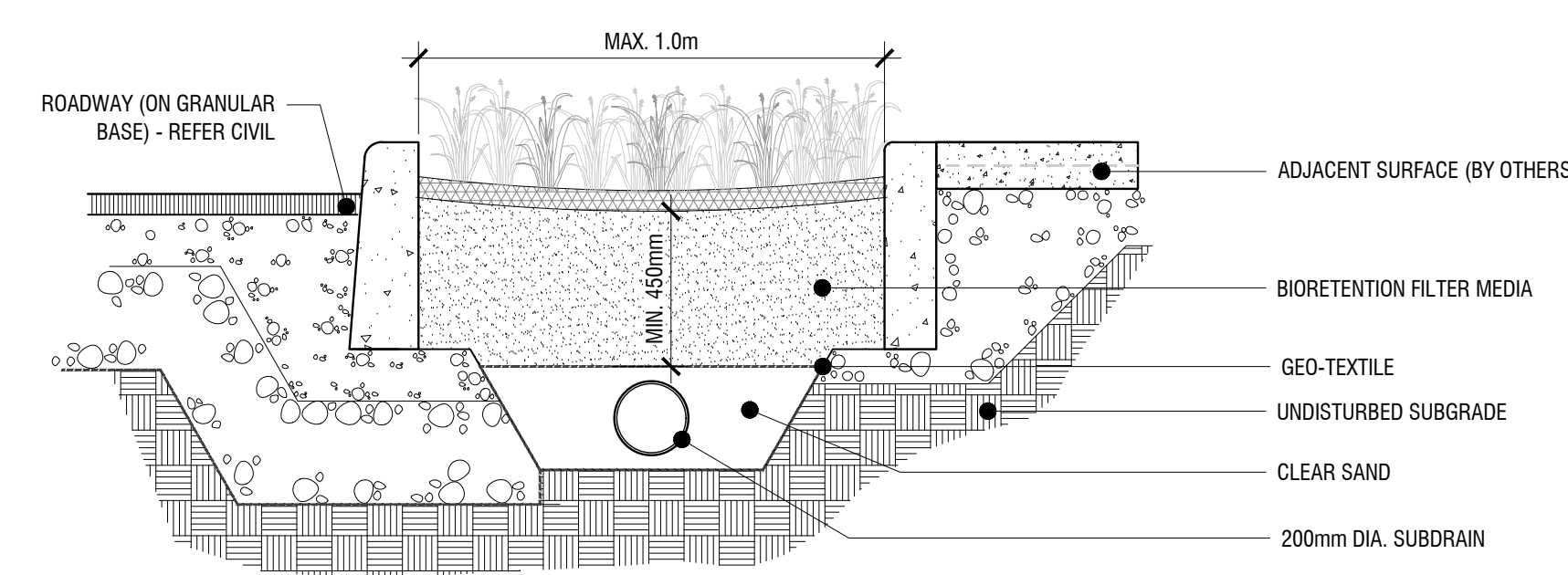
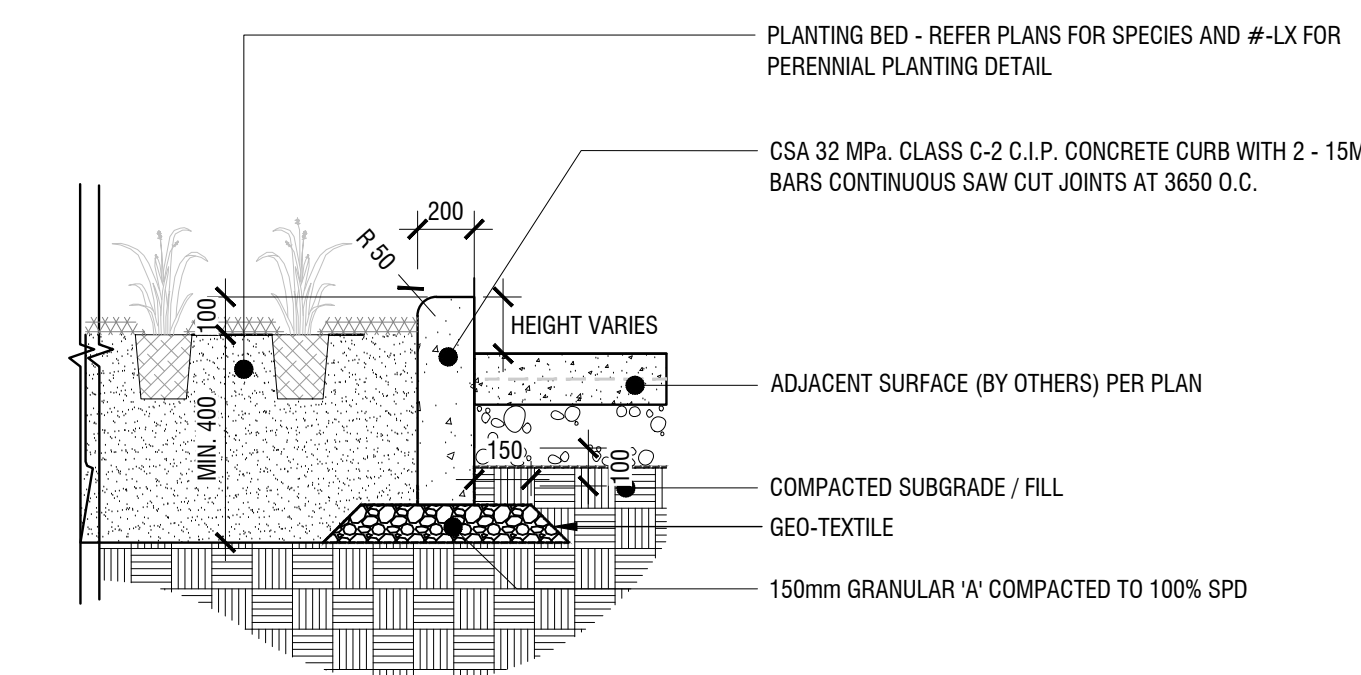
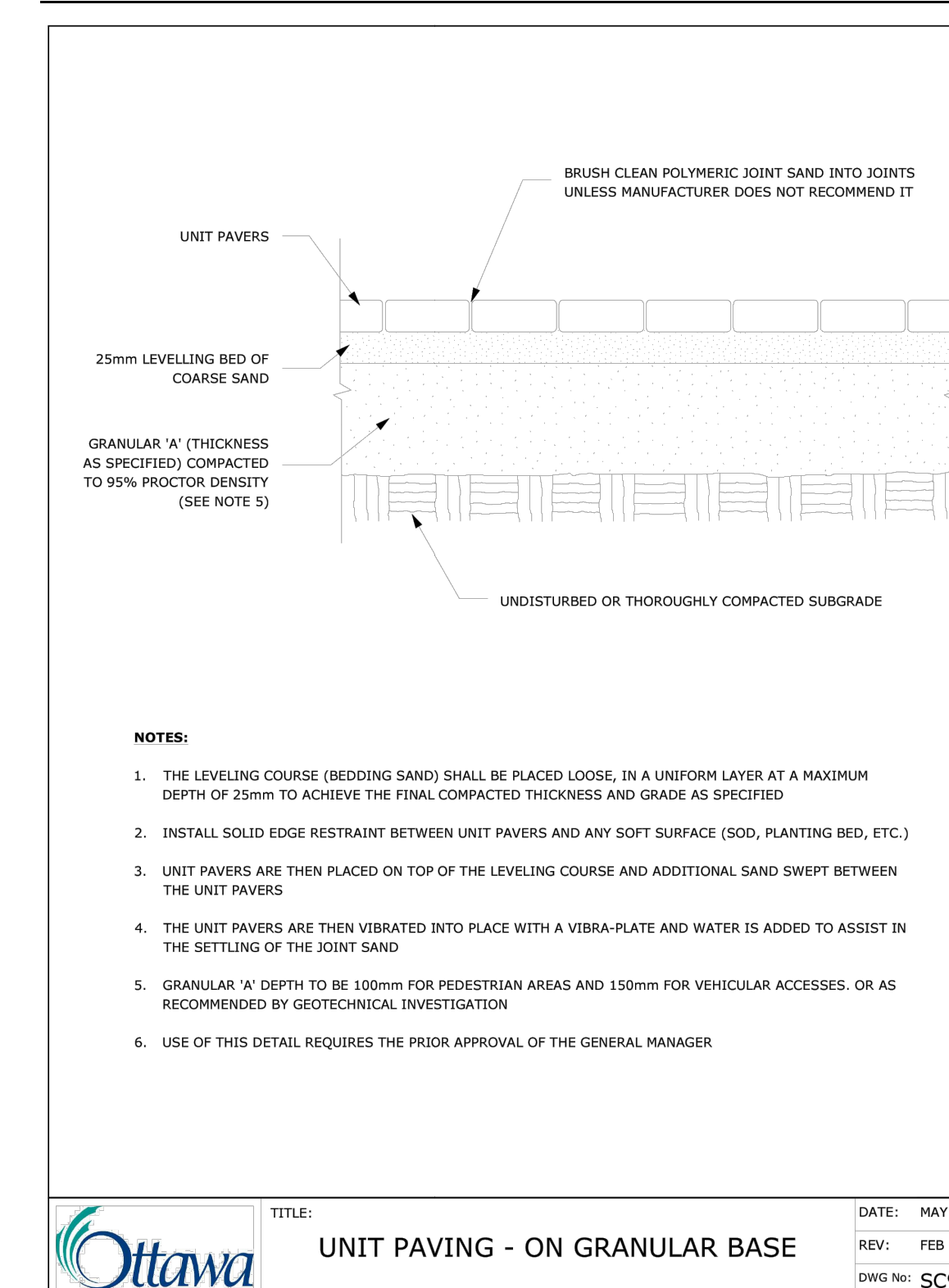
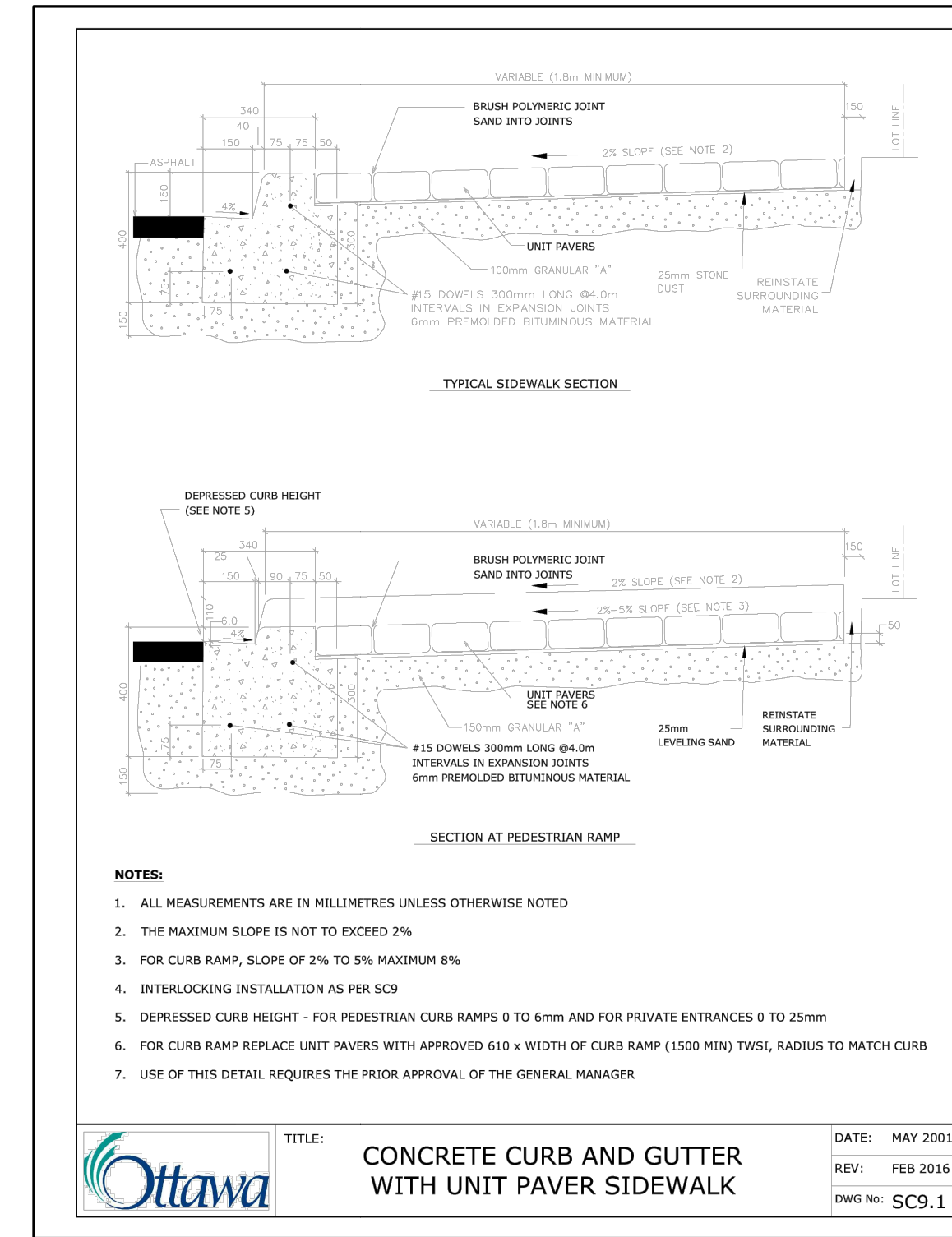
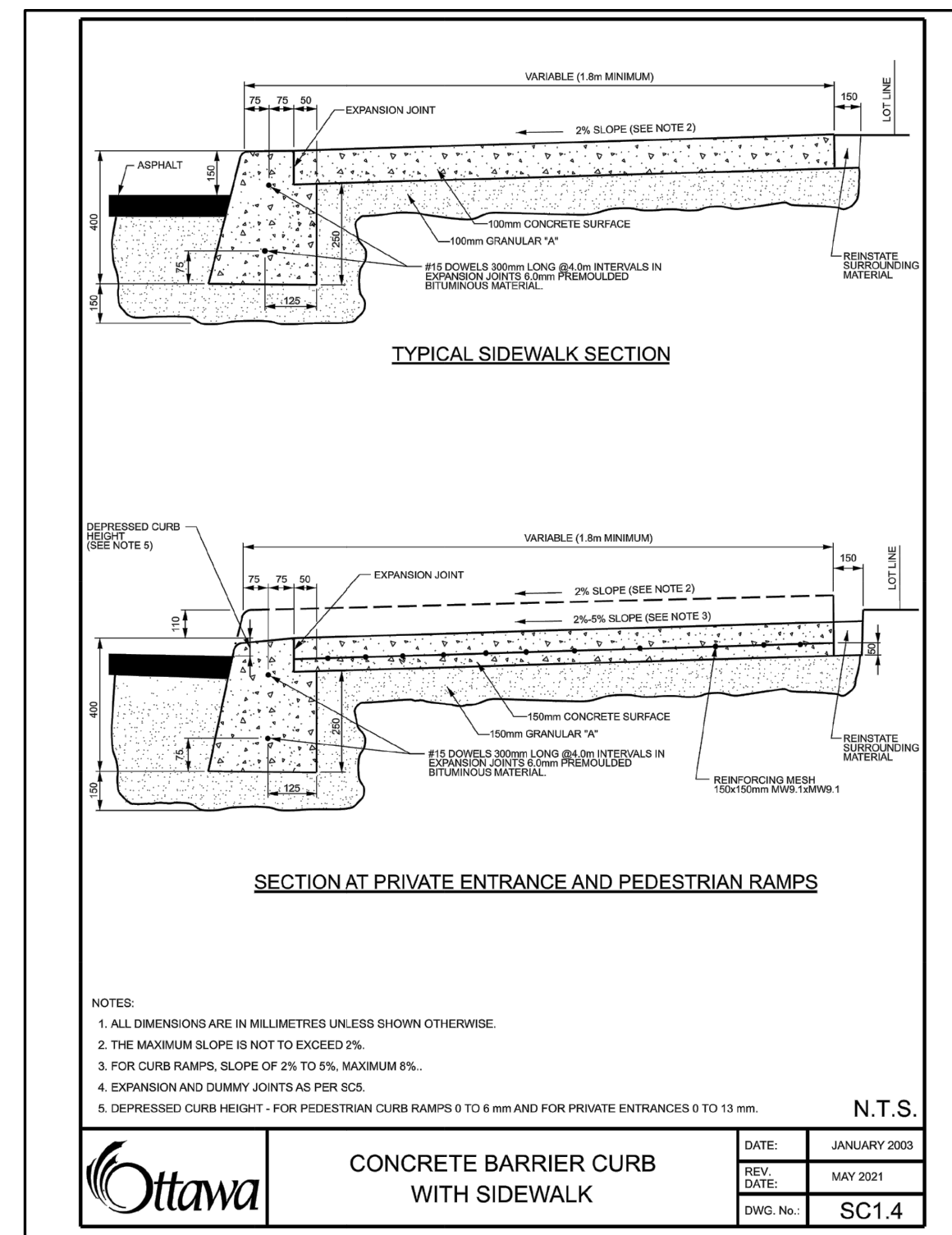
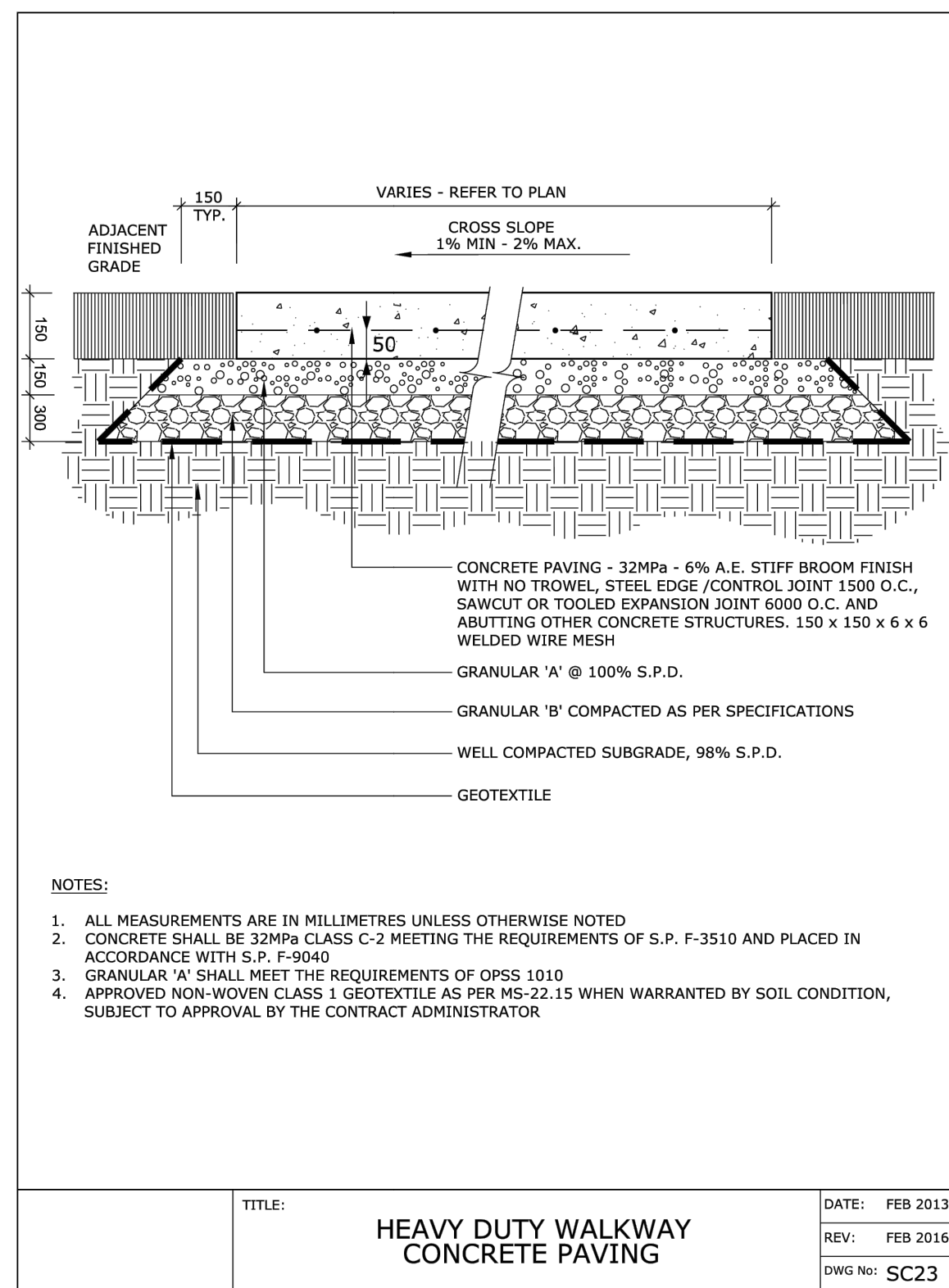
L4 of 6

1 SOIL VOLUME PLAN
L4 1:500

GROUPE ORADEV INC.

Legend / légende

**PRELIMINARY
NOT FOR CONSTRUCTION**



rev'n	description / la description	yyyy/mm/dd
03	issued for SPA	2023/06/10
02	issued for internal coordination	2023/06/08
01	issued for internal coordination	2023/05/30
00	issued for OPA and ZBLA submission	2022/10/20

FOTENN Planning + Design
396 Cooper Street, Suite 300
Ottawa, ON, CANADA K2P 2H7
613.730.5709
fotenn.com

north / le nord
stamp / le cachet
ASSOCIATION OF LANDSCAPE ARCHITECTS
OMLA
MEMBER

project / projet
400 COVENTRY ROAD
drawing / dessin

LANDSCAPE PLAN
designed / conçu
OM
date
OCT 2022
drawing number / No. du dessin

drawn / dessiné
OM
project number / No. du projet

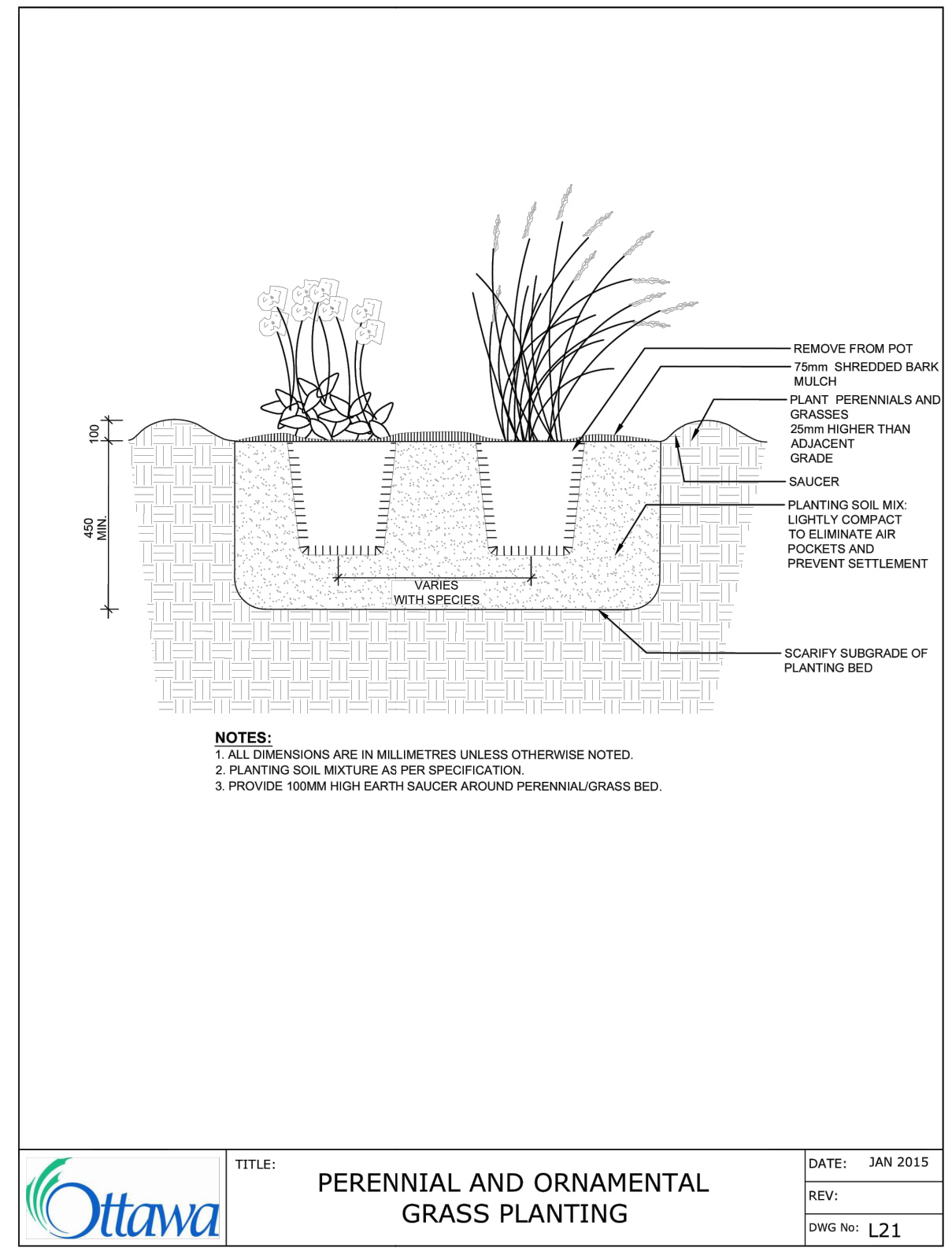
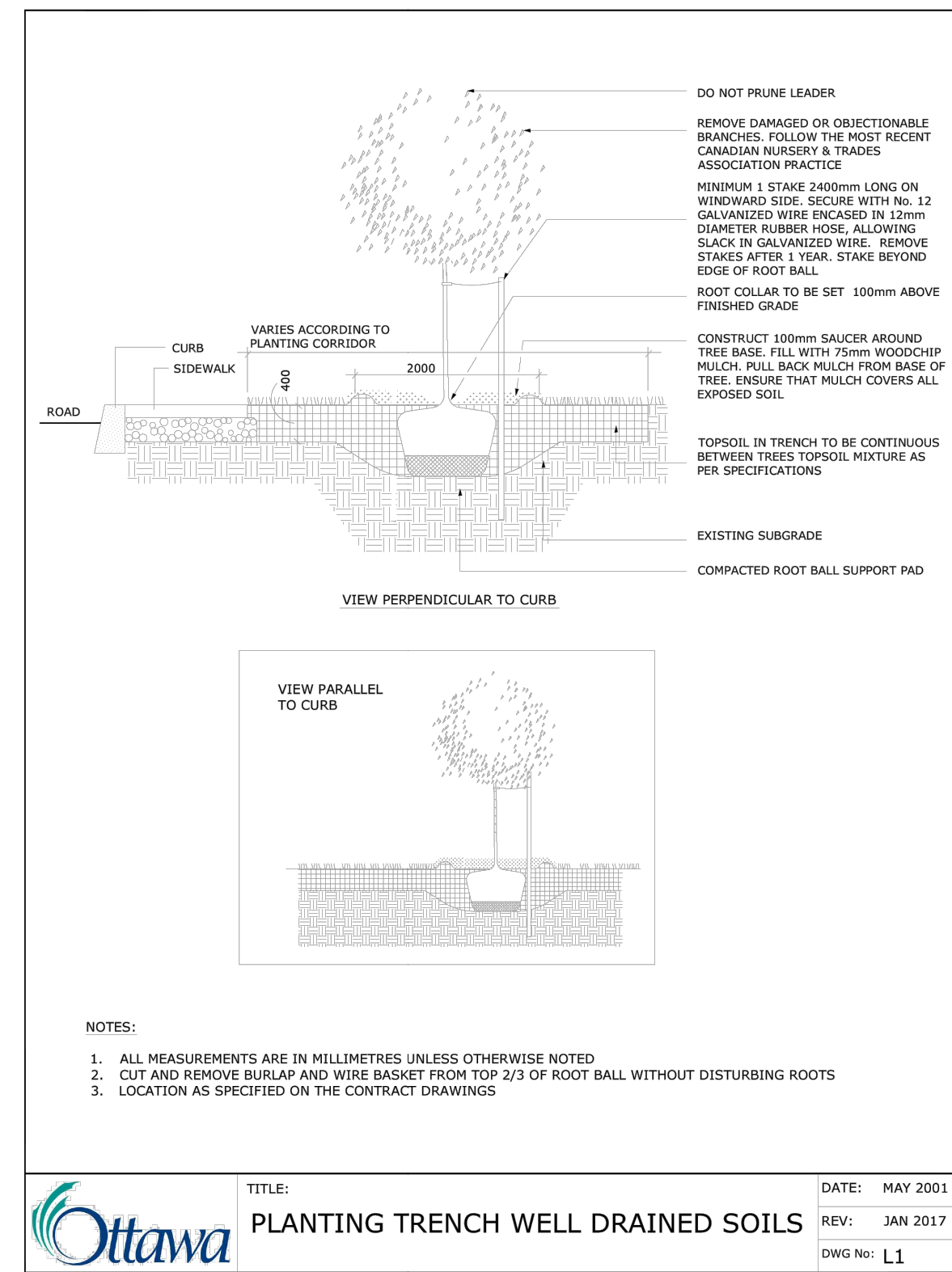
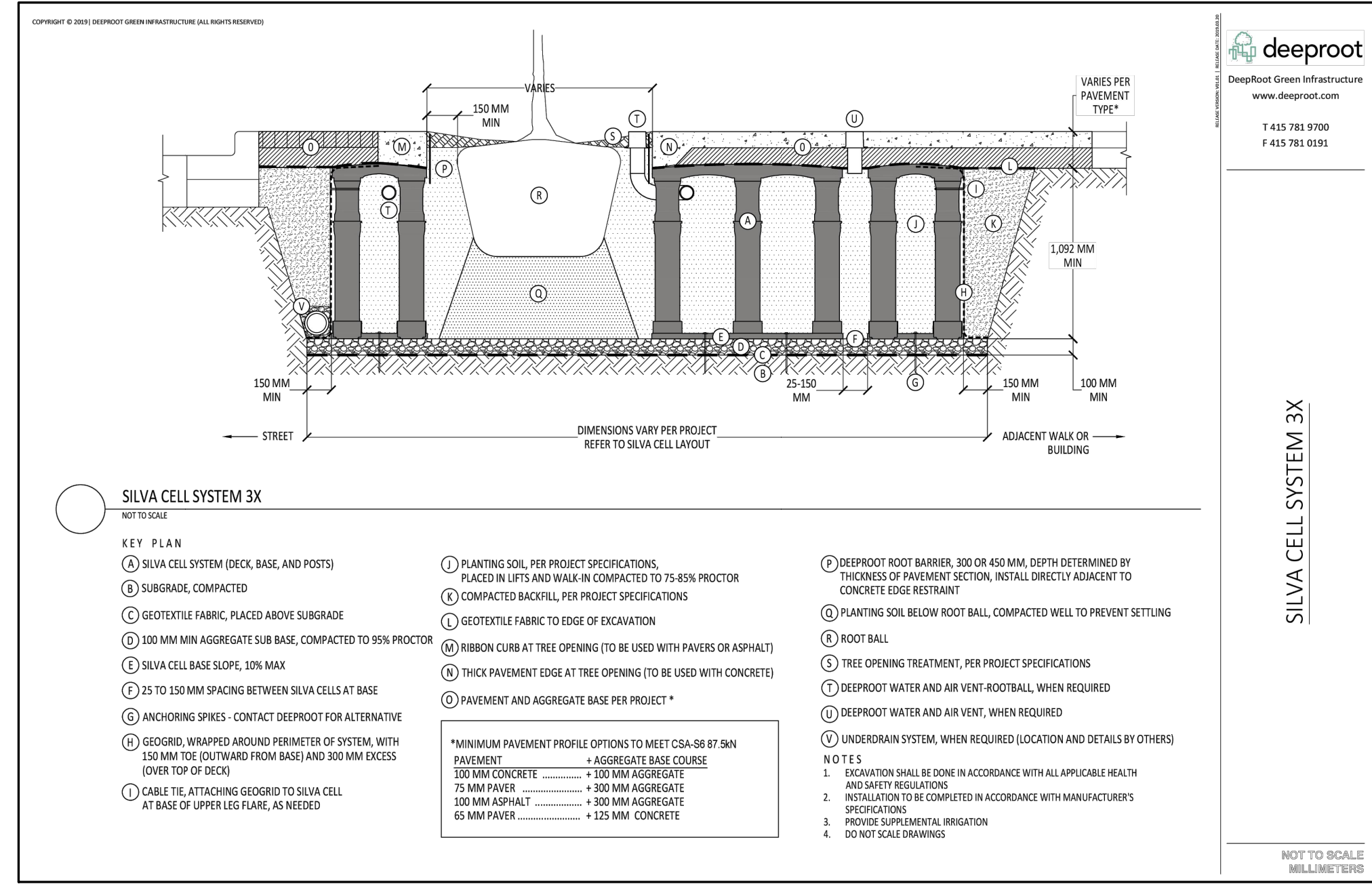
reviewed / examiné
DF

L5 of 6

GROUPE ORADEV INC.

Legend / légende

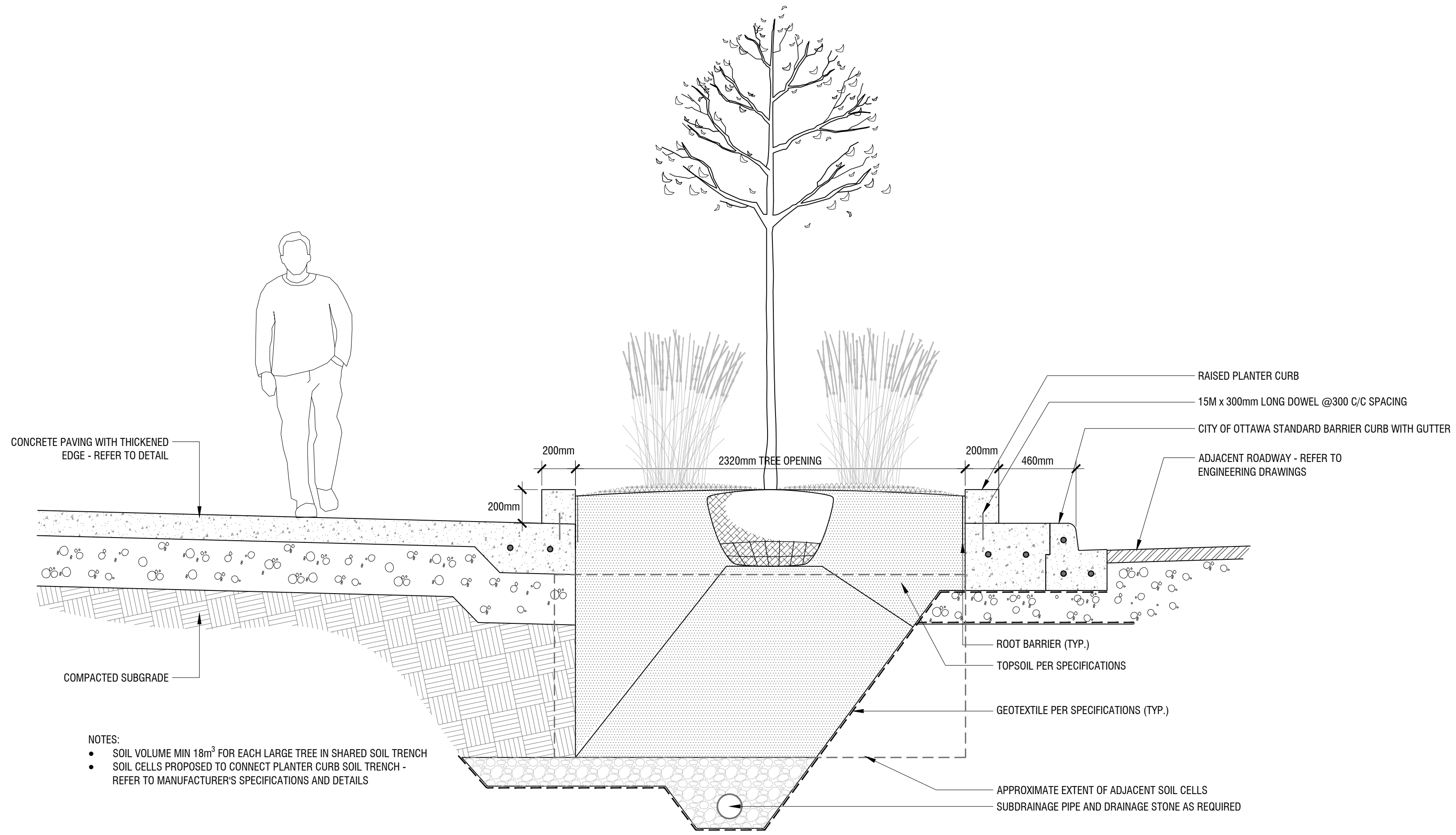
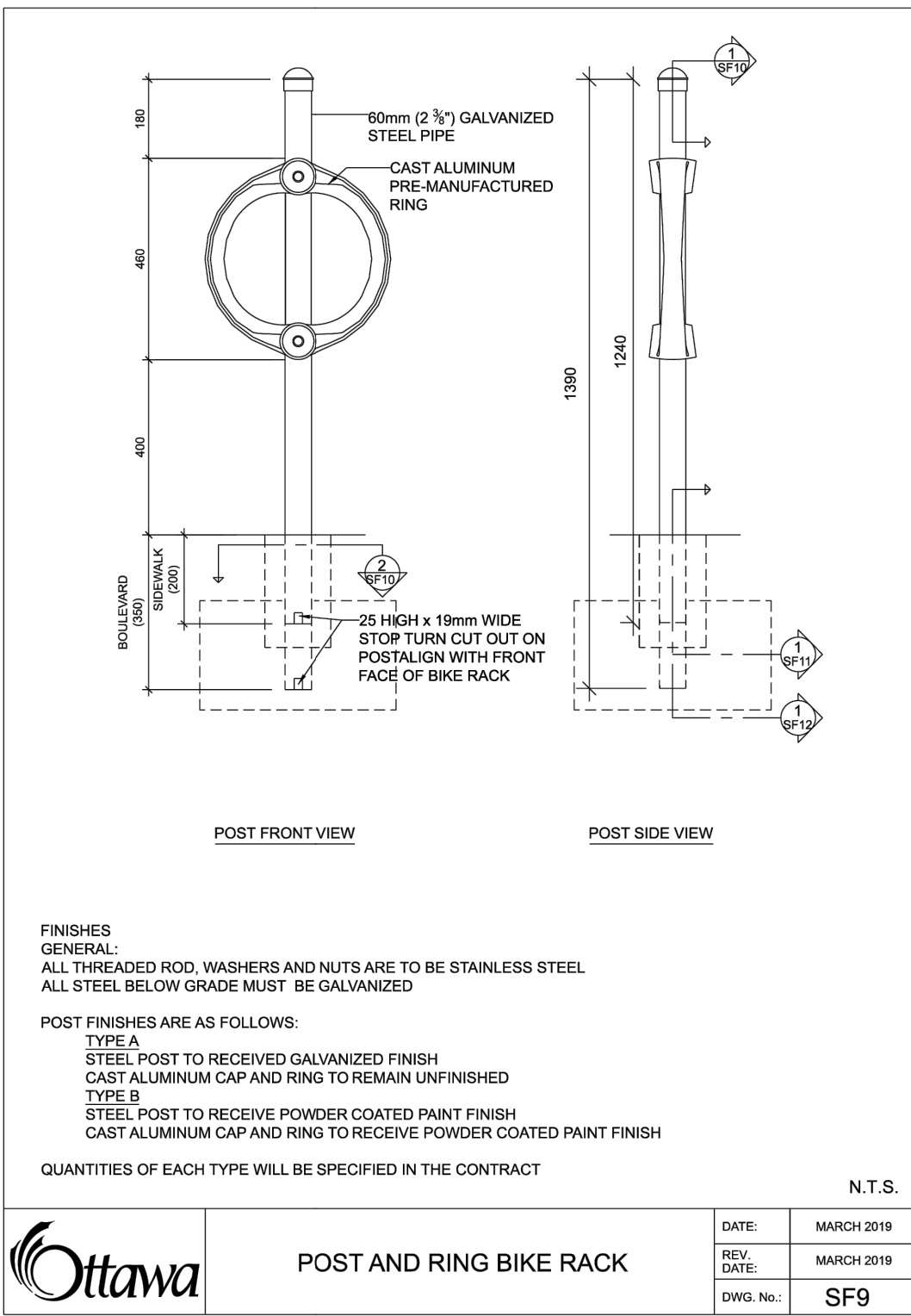
**PRELIMINARY
NOT FOR CONSTRUCTION**



1 SOIL CELL AT ROW DETAIL
L6 NTS

2 DECIDUOUS TREE / PLANTING BED DETAIL
L6 NTS

3 HERBACEOUS PLANTING DETAIL
L6 NTS



4 BIKE RACK DETAIL
L6 NTS

5 NEW ROW STREETSCAPE RAISED PLANTER
L6 1:20

03	issued for SPA	2023/06/10
02	issued for internal coordination	2023/06/08
01	issued for internal coordination	2023/05/30
00	issued for OPA and ZBLA submission	2022/10/20
rev'n	description / la description	yyyy/mm/dd

FOTENN Planning + Design
396 Cooper Street, Suite 300
Ottawa, ON, CANADA K2P 2H7
613.730.5709
fotenn.com

north / le nord stamp / le cachet
ASSOCIATION OF LANDSCAPE ARCHITECTS
OALA
MEMBER

400 COVENTRY ROAD

drawing / dessin

LANDSCAPE PLAN

designed / conçu	drawn / dessiné	reviewed / examiné
OM	OM	DF
date	project number / No. du projet	
OCT 2022		

PROJECT INFORMATION: DWG NAME: P:\PROJECTS\2023\400 Coventry Road\Landscaping\DESIGN\DEVELOPMENT\100 DRAWINGS\Schematics - 400 Coventry Rd - LPA\DWG - PUT DATE: 2023-02-09 2:35:29 PM - SHEET SIZE: ISO full sheet A1 (594.0x 841.0 MM) - PLOTTED BY: Owen Moynihan - LAST SAVED BY: moynihan