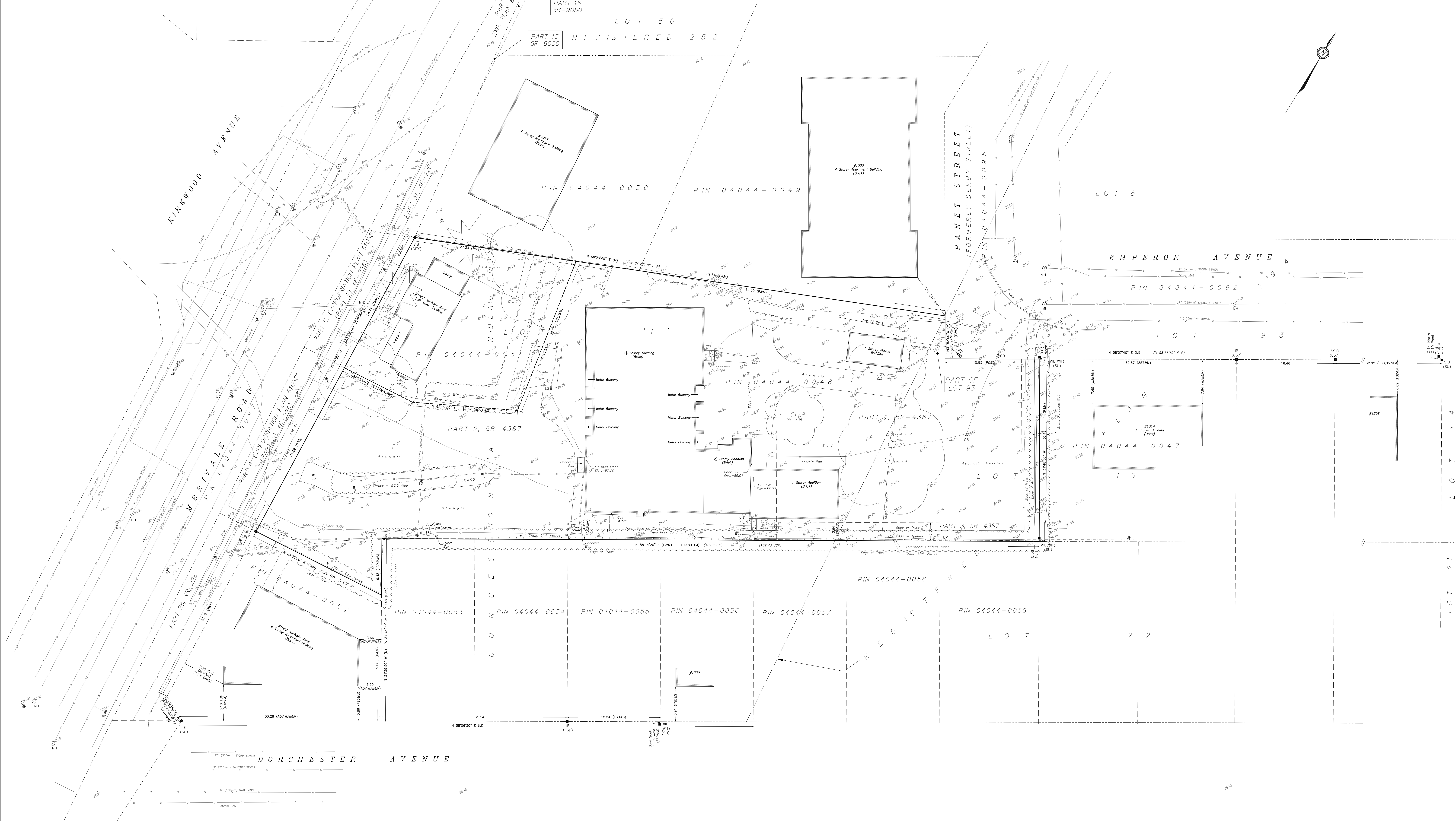


METRIC
DISTANCES AND ELEVATIONS SHOWN ON THIS PLAN ARE IN METRES
AND CAN BE CONVERTED TO FEET BY DIVIDING BY 0.3048



TOPOGRAPHIC SURVEY OF
PART OF LOTS 15 AND 93
REGISTERED PLAN 294 AND
PART OF LOT "L"
CONCESSION 'A' (RIDEAU FRONT)
CITY OF OTTAWA
SCALE: 1 : 200
FAIRHALL, MOFFATT & WOODLAND LIMITED
ONTARIO LAND SURVEYORS

ELEVATION NOTES
1. ELEVATIONS SHOWN HEREON ARE REFERRED TO GEODETIC DATUM (CGVD28).
2. ELEVATIONS FOR MANHOLE COVERS AND CATCH BASINS HAVE TO BE INDEPENDENTLY CONFIRMED BEFORE THEY CAN BE ACCEPTED FOR FINAL DESIGN OR CONSTRUCTION PURPOSES.
3. IT IS THE RESPONSIBILITY OF THE USER OF THIS INFORMATION TO VERIFY THAT THE JOB BENCHMARKS HAVE NOT BEEN ALTERED OR DISTURBED AND THAT THEIR RELATIVE ELEVATION AND DESCRIPTION AGREE WITH THE INFORMATION SHOWN ON THIS DRAWING.

UTILITY NOTES
1. THIS DRAWING CANNOT BE ACCEPTED AS ACKNOWLEDGING ALL UNDERGROUND UTILITIES AND IT WILL BE THE RESPONSIBILITY OF THE USER TO CONTACT THE RESPECTIVE UTILITY AUTHORITIES FOR CONFIRMATION OR LOCATION.
2. UNDERGROUND UTILITIES, AS REPORTED ON THIS DRAWING, ARE BASED ON AN ACTUAL FIELD LOCATE BY THE RESPECTIVE UTILITY AGENCIES OR HAVE BEEN COMPILED FROM DATA OBTAINED FROM THE FOLLOWING SOURCES:
a) CITY OF OTTAWA PUBLIC UTILITIES DIVISION
b) UNDERGROUND UTILITY LOCATORS USL-1
3. BEFORE ANY WORK INVOLVING PROBING, EXCAVATING, ETC., A FIELD LOCATION OF UNDERGROUND PLANT BY THE PERTINENT UTILITY AUTHORITY IS MANDATORY.

NOTES
BEARINGS ARE ASTROMERIC AND ARE REFERRED TO THE EASTERLY LIMIT OF PARTS 29, 28 AND 30 AS SHOWN ON PLAN 48-228 HAVING A BEARING OF N 03° 39' 00" W.

LEGEND
SURVEY MONUMENT FOUND
B - IRON BAR
SB - STANDARD IRON BAR
SSB - SHORT STANDARD IRON BAR
CC - CUT CROSS
P - PILING
[Symbol] - PLAN SA-1387
[Symbol] - SET
[Symbol] - MEASURED
[Symbol] - DIAMETER
PIN - PROPERTY IDENTIFIER NUMBER
[Symbol] - SOURCE UNKNOWN
[Symbol] - UTILITY WIRE ELEVATION
[Symbol] - TOP OF RETAINING WALL
[Symbol] - WITNESS
CLF - CHAIN LINK FENCE
[Symbol] - FAIRHALL, MOFFATT & WOODLAND LIMITED, O.L.S. (REF. 70-294 NP)
[Symbol] - FARLEY, SMITH & DENIS SURVEYING LTD., O.L.S. (REF. 75-01, 127-11)
[Symbol] - W.J. WEBSTER, O.L.S. (REF. 4-294, 9-294)
[Symbol] - FARLEY & MARTIN LTD., O.L.S. (PLAN OF #1030 PANET STREET, DATED OCTOBER 05, 1973)
[Symbol] - ANNE, O'SULLIVAN, VOLLEBERG LTD., O.L.S. (PLAN OF #108 MERVALE ROAD, DATED FEBRUARY 13, 1975)
[Symbol] - PLAN OF #1083 MERVALE ROAD, DATED JANUARY 17, 1984
[Symbol] - CITY OF OTTAWA
[Symbol] - J.E. PARVETTE, O.L.S. (PLAN OF #1008 MERVALE ROAD, DATED SEPTEMBER 07, 1982)
[Symbol] - CATCHBAG
[Symbol] - WATER WALK
[Symbol] - UTILITY POLE
[Symbol] - GUY WIRE AND ANCHOR
[Symbol] - FIRE HYDRANT
[Symbol] - MANHOLE
[Symbol] - SOIL
[Symbol] - DECIDUOUS TREE
[Symbol] - SANITARY SEWER
[Symbol] - STORM SEWER
[Symbol] - WATERMAIN
[Symbol] - GAS LINE
[Symbol] - FRUIT
[Symbol] - BELL
[Symbol] - HYDRO
[Symbol] - OVERHEAD UTILITY WIRES
[Symbol] - AT&T (FIBER OPTICS)
[Symbol] - STREET LIGHTING

SURVEYOR'S CERTIFICATE
I CERTIFY THAT:
1. THE SURVEY AND PLAN ARE CORRECT AND IN ACCORDANCE WITH THE SURVEYS ACT, THE SURVEYORS ACT, THE LAND TITLES ACT AND THE REGULATIONS MADE UNDER THEM.
2. THE SURVEY WAS COMPLETED ON AUGUST 09, 2021.

ASSOCIATION OF ONTARIO LAND SURVEYORS
PLAN 2173721
DATE: 2021-08-09
SURVEYOR: JOHN N. GUTHRIE
ONTARIO LAND SURVEYOR
JOB NO.: A 8 2 2 3 0 0
E: 344918, N: 502655
REFERENCE NO.: 92-A0978P
FAIRHALL, MOFFATT & WOODLAND
SURVEYING AND LAND INFORMATION SERVICES
1000 SHEPPARD AVENUE EAST, SUITE 100, SCARBOROUGH, ONTARIO M1S 1W7
TEL: (416) 291-7200 FAX: (416) 291-7444
WWW.FAIRHALLMOFFATT.COM

© COPYRIGHT 2021. REPRODUCTION, ALTERATION OR DISTRIBUTION OF THIS PLAN WITHOUT THE WRITTEN CONSENT OF FAIRHALL, MOFFATT & WOODLAND LIMITED IS PROHIBITED.