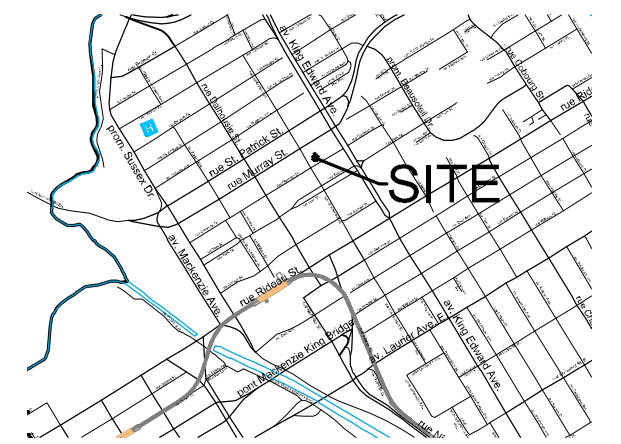
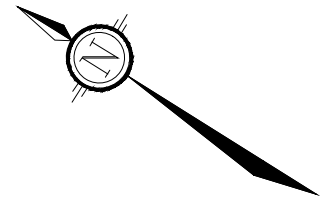


LEGEND

Property Line

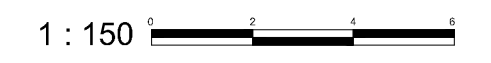


KEY PLAN
N.T.S.

SITE PLAN

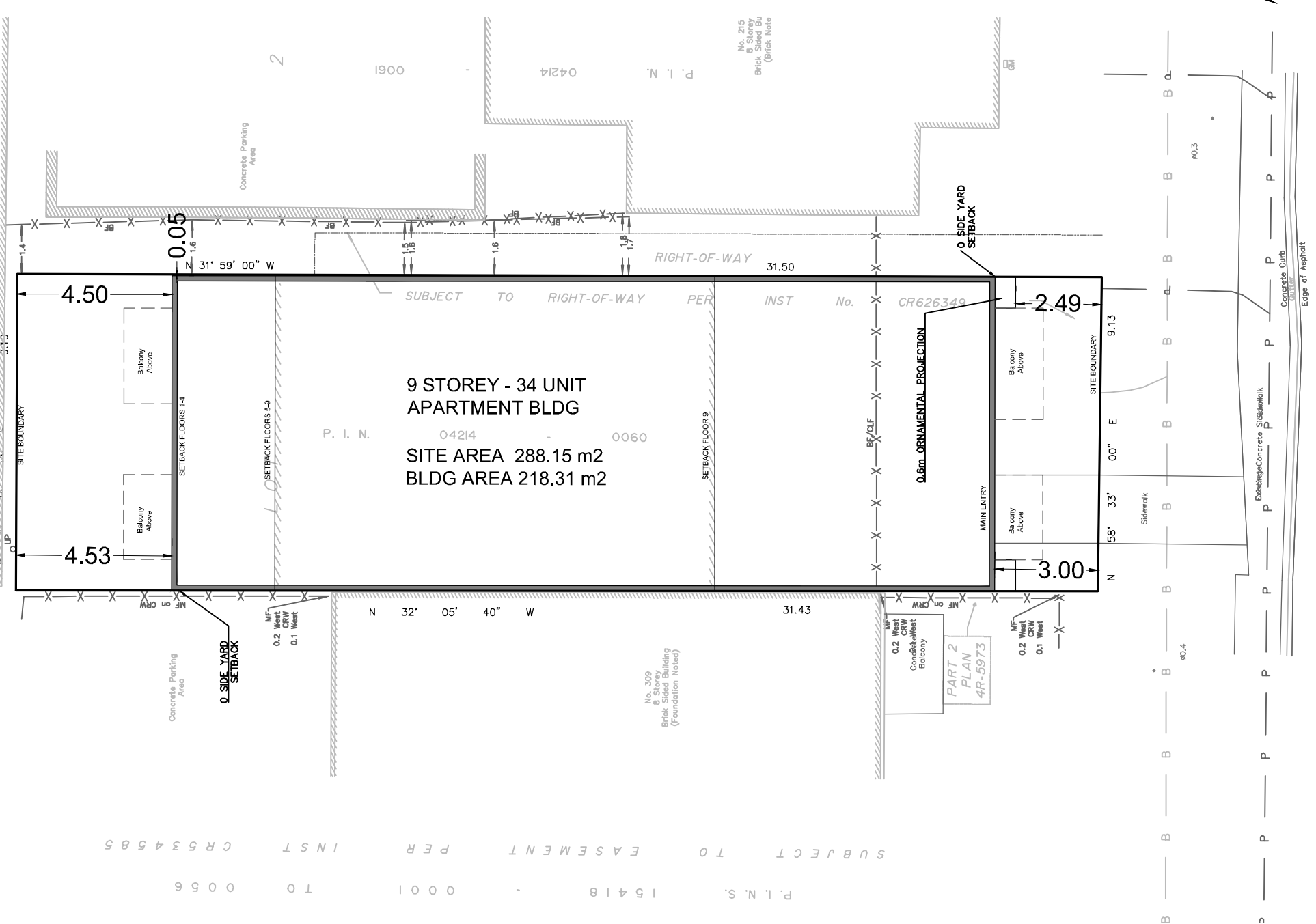
211 CLARENCE STREET

PART OF LOT 2
REGISTERED PLAN 42482
CITY OF OTTAWA



CLARENCE STREET
(FORMERLY PARRY STREET)

CLARENCE STREET
(FORMERLY PARRY STREET)



SOURCE REFERENCE:
Legal Information: *Plan of Survey*
Farley, Smith & Denis Surveying Limited / 2011 / MTM Zone 9, NAD 83

No.	REVISION	DATE	BY
1.	ISSUED FOR SITE PLAN CONTROL	xxx	JK

NOVATECH
Engineers, Planners & Landscape Architects
Suite 200, 240 Michael Cowpland Drive
Ottawa, Ontario, Canada K2M 1P6
Telephone (613) 254-9643
Facsimile (613) 254-5867
Website www.novatech-eng.com

ISSUED
APRIL, 2022
PROJECT No.
111023
DRAWING No.
111023-SP