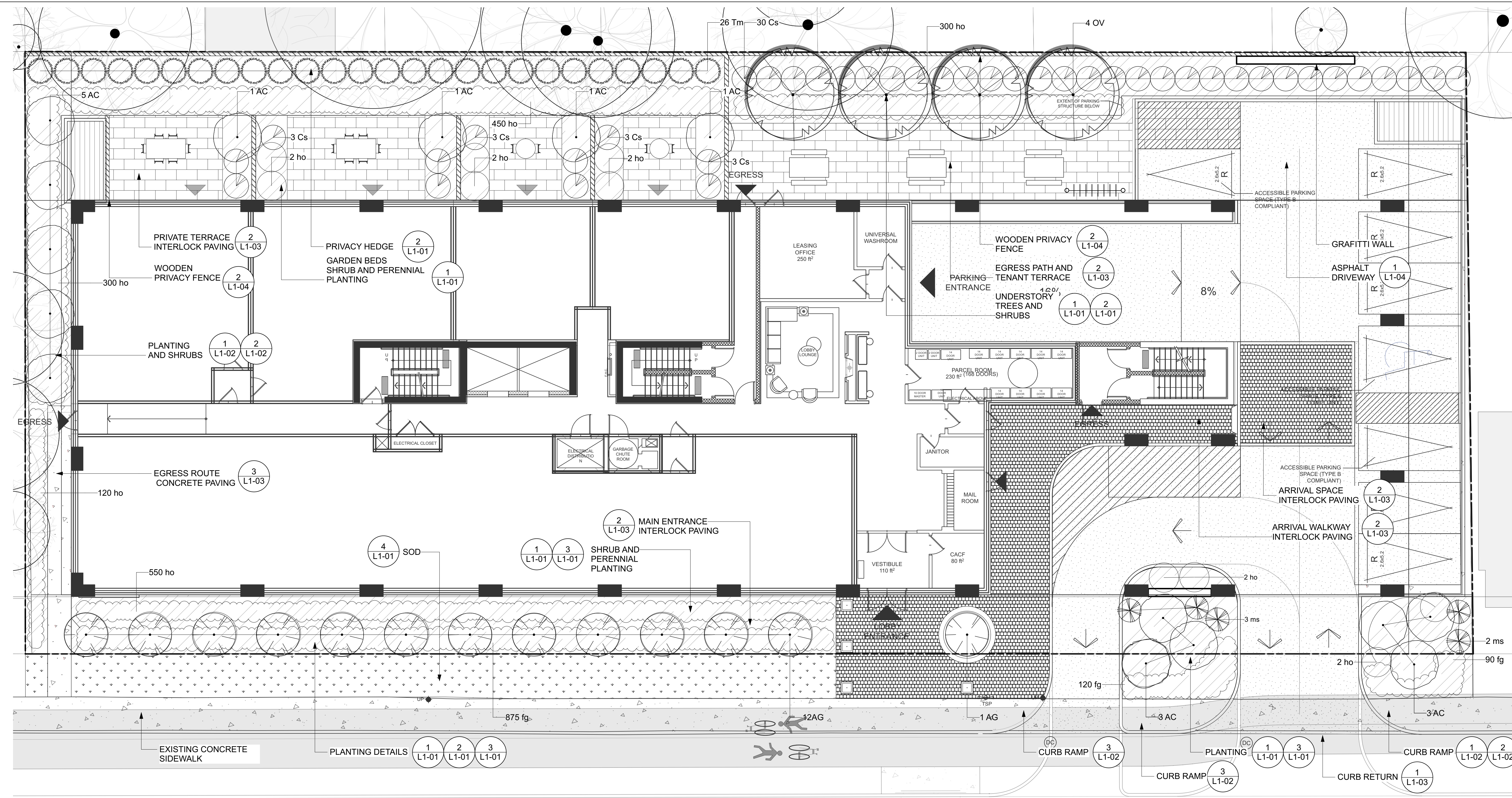




KEY PLAN, NTS

- GENERAL NOTES**
1. ALL GENERAL SITE INFORMATION AND CONDITIONS COMPILED FROM ARCHITECT'S AND ENGINEER'S PLANS AND SURVEYS.
 2. DO NOT SCALE THIS DRAWING.
 3. REPORT ANY DISCREPANCIES PRIOR TO COMMENCING WORK. NO RESPONSIBILITY IS BORN BY THE LANDSCAPE ARCHITECT FOR UNKNOWN SUBSURFACE CONDITIONS.
 4. REINSTATE ALL AREAS AND ITEMS DAMAGED AS A RESULT OF CONSTRUCTION ACTIVITIES TO THE SATISFACTION OF THE LANDSCAPE ARCHITECT.
 5. DRAWING MAY NOT BE USED FOR CONSTRUCTION UNTIL SIGNED BY LANDSCAPE ARCHITECT AS ISSUED FOR CONSTRUCTION.
 6. THE ACCURACY OF THE POSITION OF UTILITIES IS NOT GUARANTEED.
 7. INDIVIDUAL UTILITY CO. MUST BE CONTACTED FOR CONFIRMATION OF UTILITY EXISTENCE AND LOCATION PRIOR TO DIGGING.
 8. THIS DRAWING IS AN INSTRUMENT OF SERVICE AND REQUIRES THE PERMISSION OF THE LANDSCAPE ARCHITECT FOR USE. COPYRIGHT IS RESERVED BY THE LANDSCAPE ARCHITECT, DAVID M. LASHLEY.



CHAMBERLAIN AVE

1
L0-01 LANDSCAPE PLAN
Scale: 1:100



LEGEND

- PROPERTY LINE
- UNIT PARVERS
- ASPHALT
- LIGHT DUTY CONCRETE WALKWAY
- MULCH
- SOD
- PROPOSED PLANTING

PLANT LIST					
DECIDUOUS TREES					
KEY	QTY	BOTANICAL NAME	COMMON NAME	SIZE	COMMENTS
AC	20	<i>Amelanchier Canadensis</i>	Serviceberry	175 cm WB	Single Stem
AG	13	<i>Acer Ginnala</i>	Amur Maple	50mm CAL	
OV	4	<i>Ostrya Virginiana</i>	Ironwood	70mm CAL	
SHRUBS					
KEY	QTY	BOTANICAL NAME	COMMON NAME	SIZE	COMMENTS
Cs	41	<i>Cornus Sericea 'Arctis Fire'</i>	Arctis Fire Dogwood	2 gal pot	potted
Tm	26	<i>Taxus x Media 'Hicksii'</i>	Hick's Yew	150 cm WB	
GRASSES					
KEY	QTY	BOTANICAL NAME	COMMON NAME	SIZE	COMMENTS
fg	1085	<i>Festuca Glauca</i>	Blue Fescue	1 gal pot	potted
ms	5	<i>Miscanthus Sinensis 'Stracillimus'</i>	Maiden Grass	2 gal pot	potted
PERENNIALS					
KEY	QTY	BOTANICAL NAME	COMMON NAME	SIZE	COMMENTS
ho	1730	<i>Hosta</i>	Hosta Varieties	1 gal pot	potted

A 2023-05-15 ISSUED FOR SPC

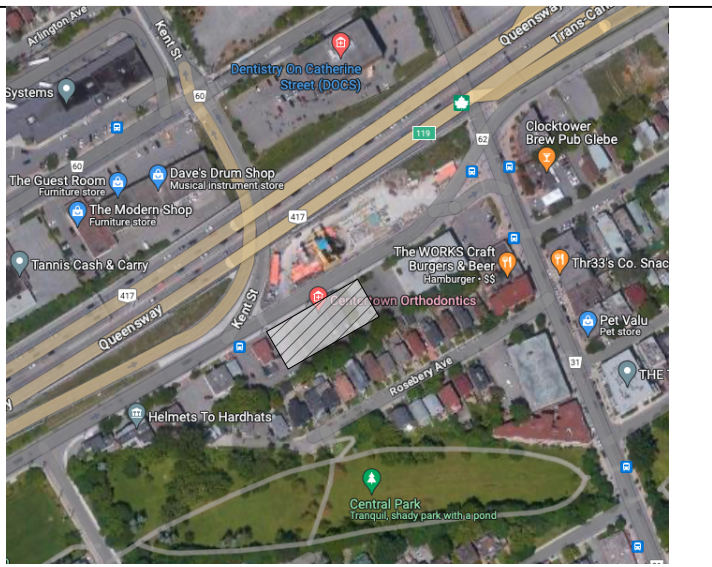
NO.	DATE	DESCRIPTION



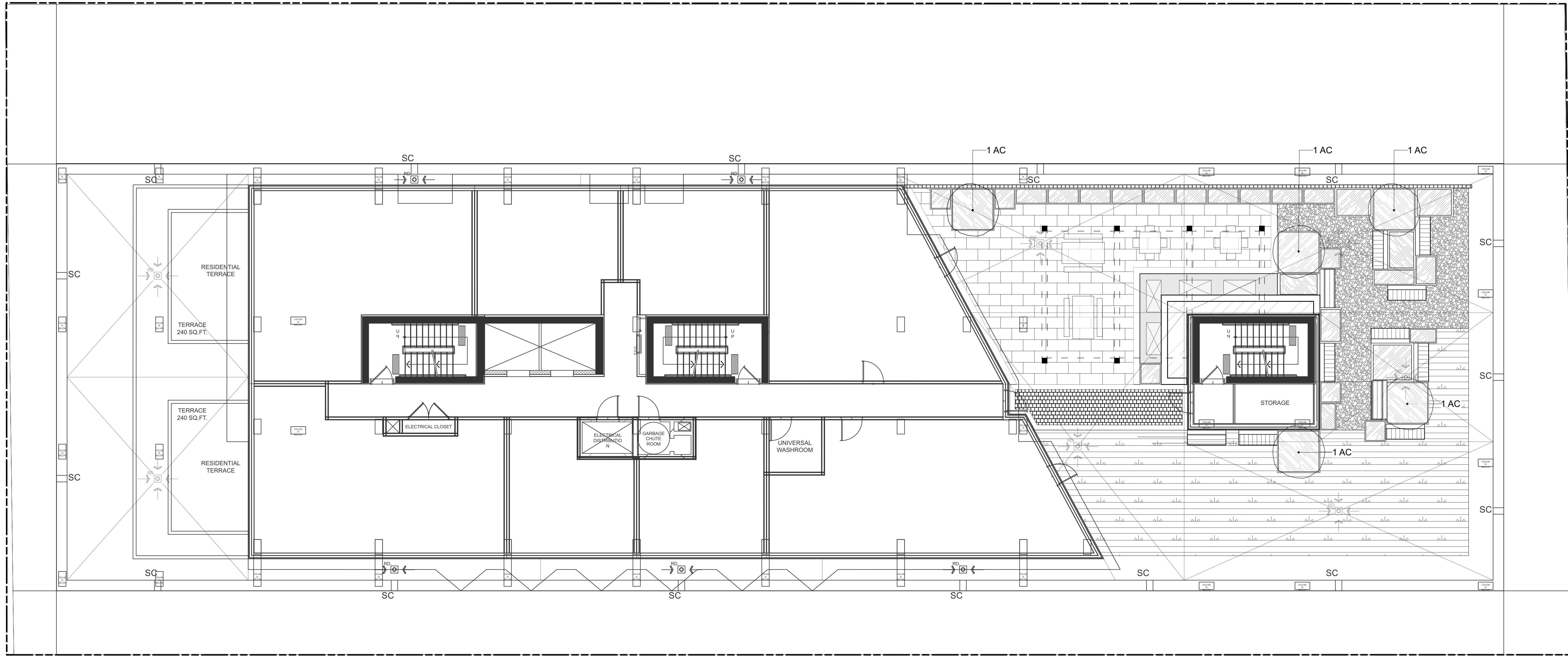
PROJECT:
30 - 48 Chamberlain Avenue
30 - 48 CHAMBERLAIN AVENUE,
OTTAWA, ONTARIO, K1S 1V9

DRAWING TITLE:
Landscape Plan

DATE: 2023-05-05 **DRAWING NO.:** L0-01
DRAWN SCALE: AS NOTED
DRAWN BY: SX
LA PROJECT NO.: 23855-1 **REV NO.:** 0



KEY PLAN, NTS

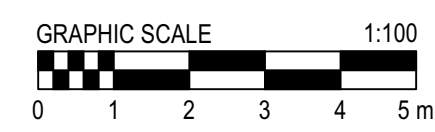


GENERAL NOTES

1. ALL GENERAL SITE INFORMATION AND CONDITIONS COMPILED FROM ARCHITECT'S AND ENGINEER'S PLANS AND SURVEYS.
2. DO NOT SCALE THIS DRAWING.
3. REPORT ANY DISCREPANCIES PRIOR TO COMMENCING WORK. NO RESPONSIBILITY IS BORN BY THE LANDSCAPE ARCHITECT FOR UNKNOWN SUBSURFACE CONDITIONS.
4. REINSTATE ALL AREAS AND ITEMS DAMAGED AS A RESULT OF CONSTRUCTION ACTIVITIES TO THE SATISFACTION OF THE LANDSCAPE ARCHITECT.
5. DRAWING MAY NOT BE USED FOR CONSTRUCTION UNTIL SIGNED BY LANDSCAPE ARCHITECT AS ISSUED FOR CONSTRUCTION.
6. THE ACCURACY OF THE POSITION OF UTILITIES IS NOT GUARANTEED.
7. INDIVIDUAL UTILITY CO. MUST BE CONTACTED FOR CONFIRMATION OF UTILITY EXISTENCE AND LOCATION PRIOR TO DIGGING.
8. THIS DRAWING IS AN INSTRUMENT OF SERVICE AND REQUIRES THE PERMISSION OF THE LANDSCAPE ARCHITECT FOR USE. COPYRIGHT IS RESERVED BY THE LANDSCAPE ARCHITECT, DAVID M. LASHLEY.

DRAFT
NOT FOR SUBMISSION

1 PODIUM LANDSCAPE PLAN
L0-02 Scale: 1:100



LEGEND

- PROPERTY LINE
- UNIT PARVERS
- GRAVEL
- MULCH
- ARTIFICIAL SOD
- PROPOSED PLANTING
- SITE FURNITURE

A 2023-05-15 ISSUED FOR SPC

NO.	DATE	DESCRIPTION

SEAL: NORTH:

202, 660 GLADSTONE AVENUE
OTTAWA, ON K1V 2E5
T 613 233 8579 x102
F 613 233 4051
W LashleyLA.com
E Mail@LashleyLA.com

PROJECT:
30 - 48 Chamberlain Avenue
30 - 48 CHAMBERLAIN AVENUE,
OTTAWA, ONTARIO, K1S 1V9

DRAWING TITLE:
Landscape Plan - Podium

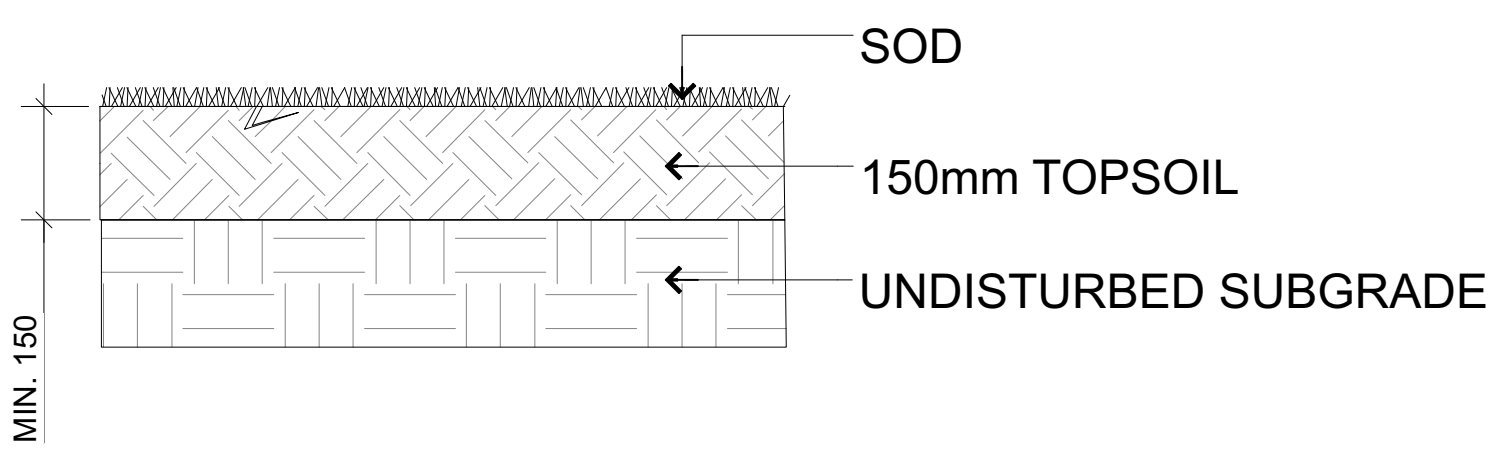
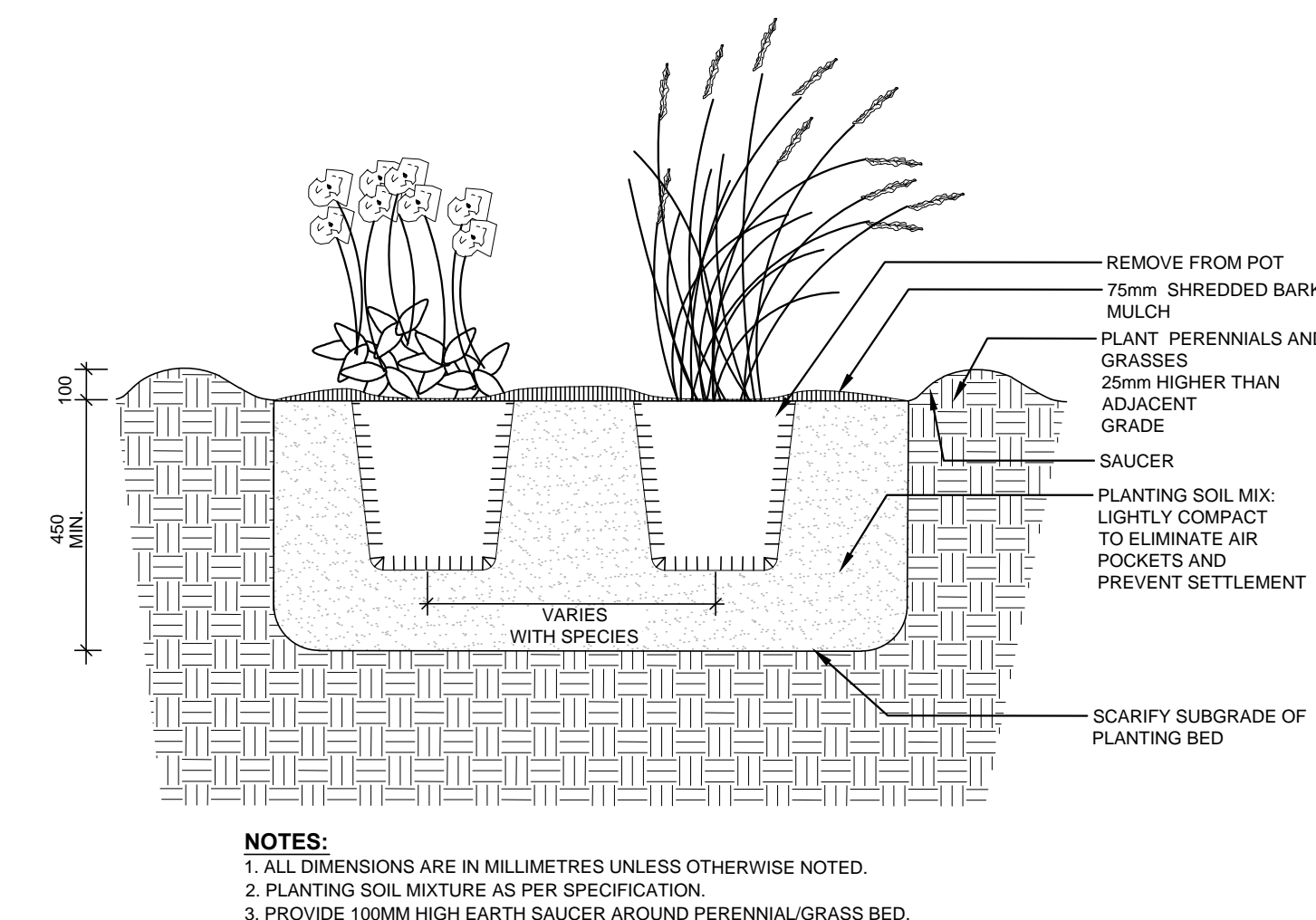
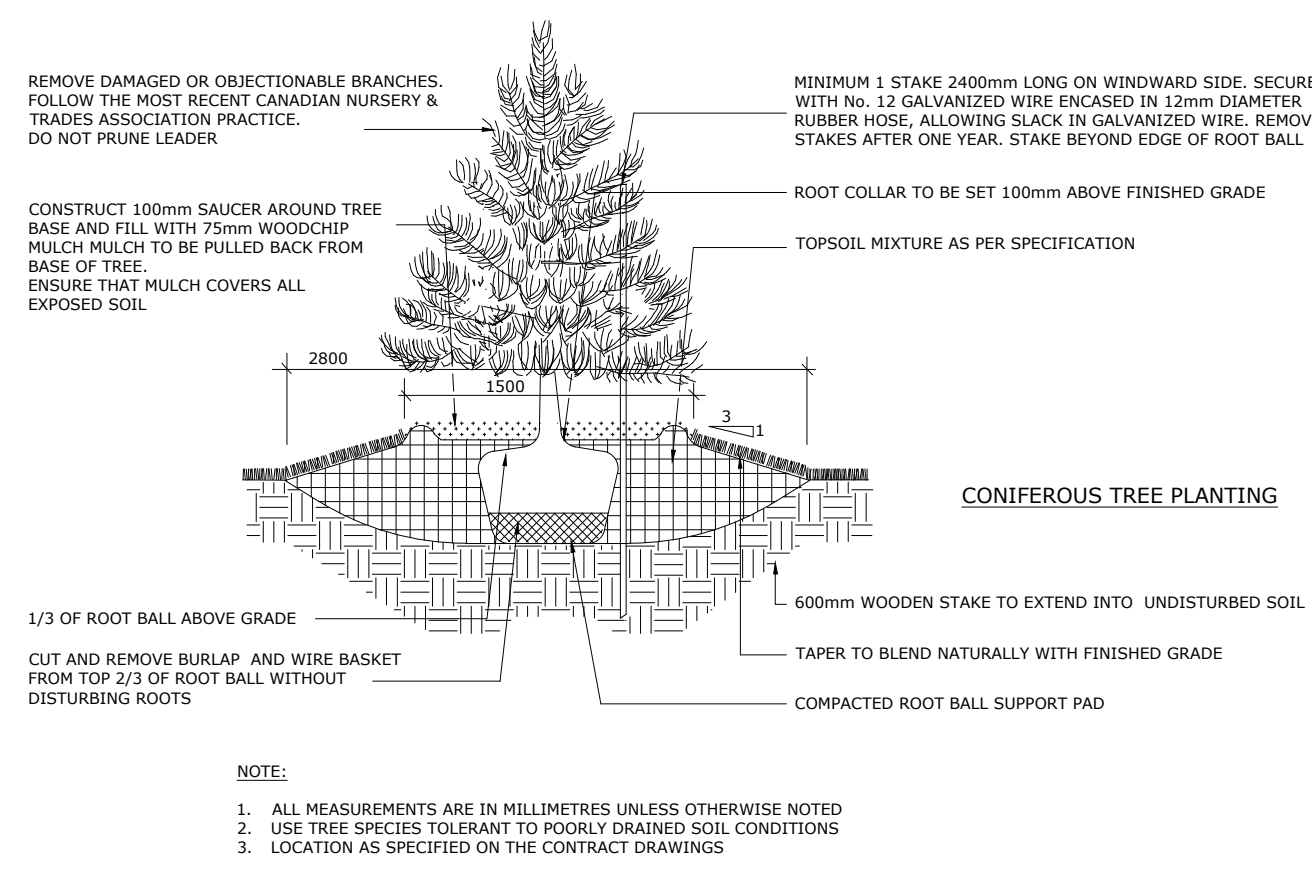
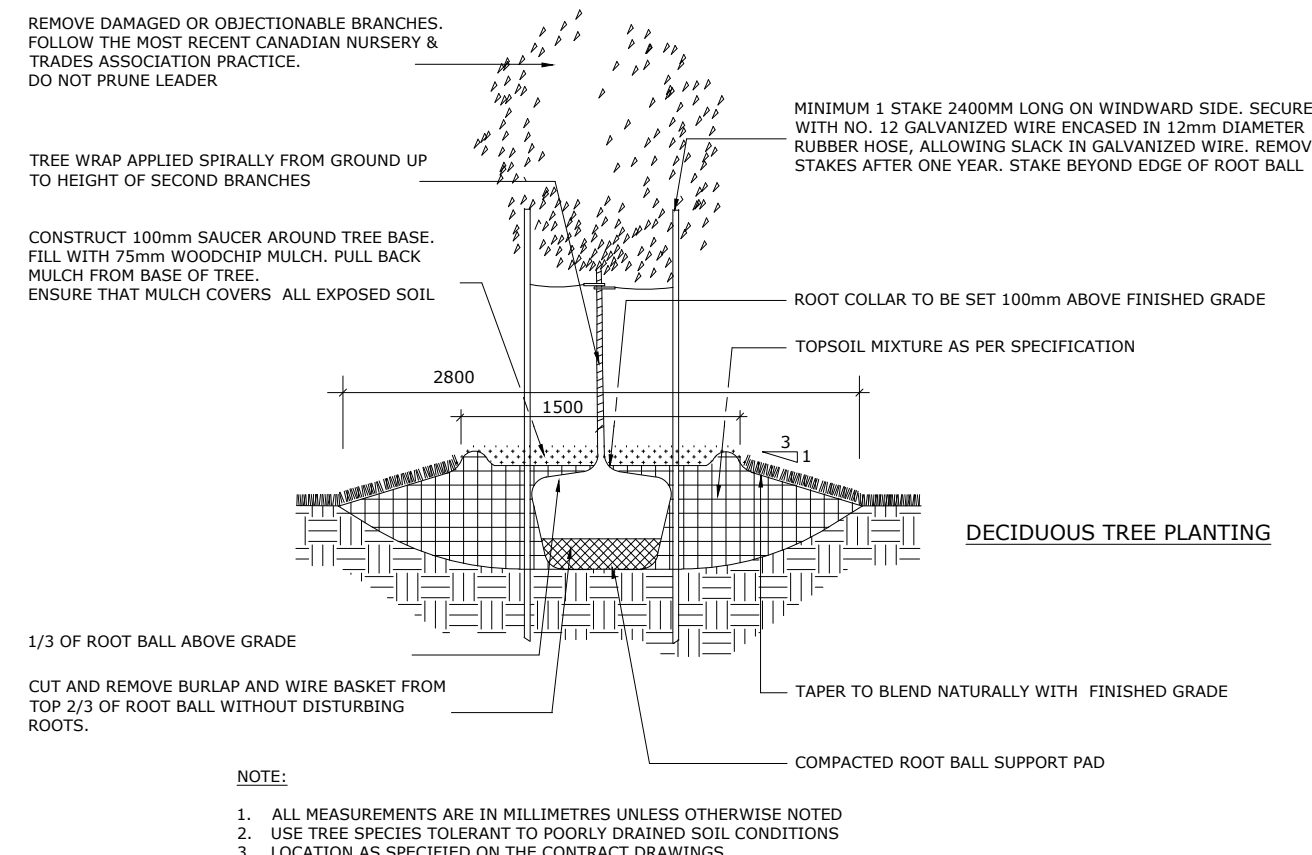
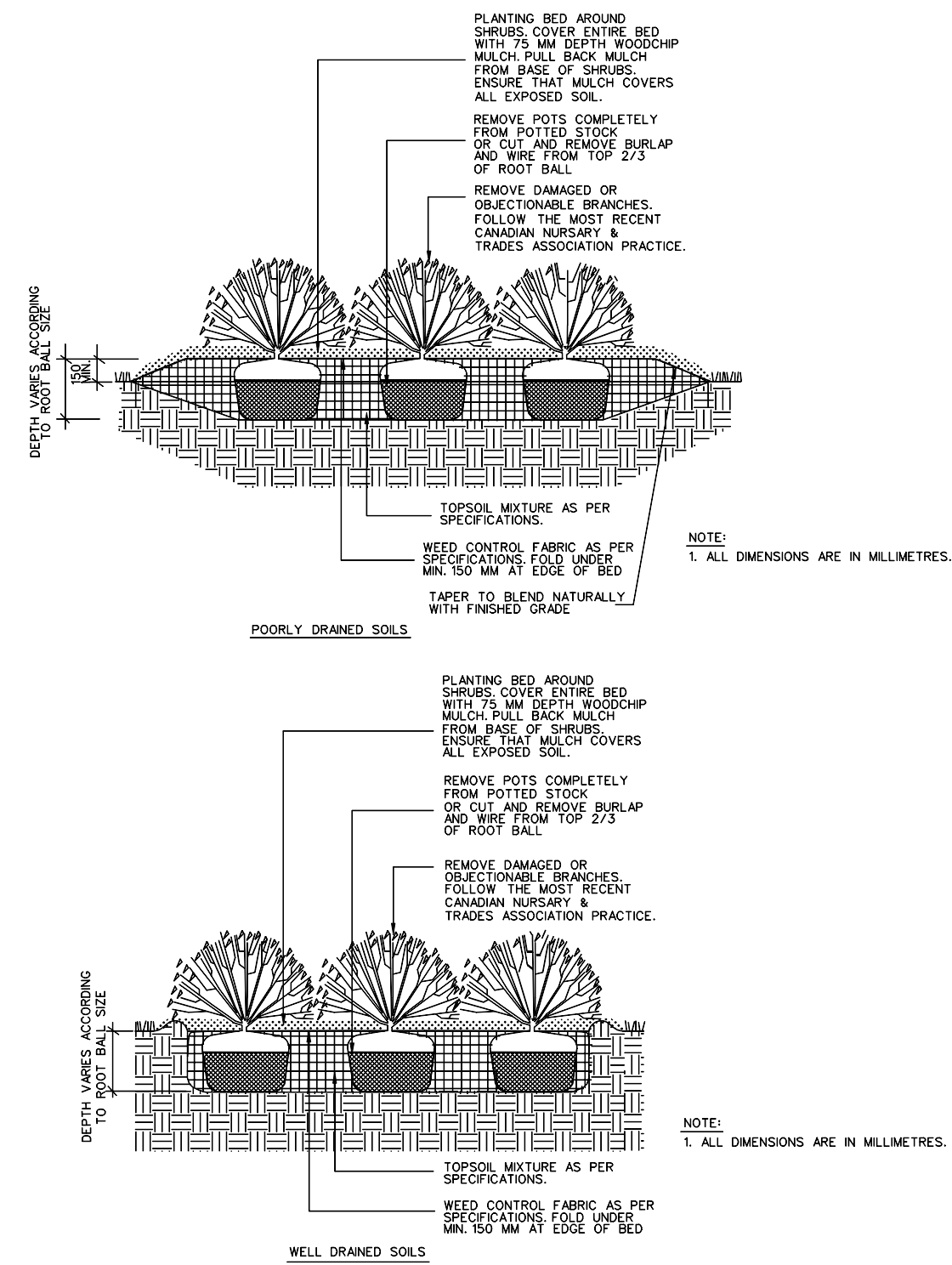
DATE: 2023-05-05 **DRAWING NO.:**
DRAWN SCALE: AS NOTED **L0-02**
DRAWN BY: SX
LA PROJECT NO.: 23855-1 **REV NO.:** 0



KEY PLAN, N.T.S.

GENERAL NOTES

1. ALL GENERAL SITE INFORMATION AND CONDITIONS COMPILED FROM ARCHITECT'S AND ENGINEER'S PLANS AND SURVEYS.
2. DO NOT SCALE THIS DRAWING.
3. REPORT ANY DISCREPANCIES PRIOR TO COMMENCING WORK. NO RESPONSIBILITY IS BORN BY THE LANDSCAPE ARCHITECT FOR UNKNOWN SUBSURFACE CONDITIONS.
4. REINSTATE ALL AREAS AND ITEMS DAMAGED AS A RESULT OF CONSTRUCTION ACTIVITIES TO THE SATISFACTION OF THE LANDSCAPE ARCHITECT.
5. DRAWING MAY NOT BE USED FOR CONSTRUCTION UNTIL SIGNED BY LANDSCAPE ARCHITECT AS ISSUED FOR CONSTRUCTION.
6. THE ACCURACY OF THE POSITION OF UTILITIES IS NOT GUARANTEED.
7. INDIVIDUAL UTILITY CO. MUST BE CONTACTED FOR CONFIRMATION OF UTILITY EXISTENCE AND LOCATION PRIOR TO DIGGING.
8. THIS DRAWING IS AN INSTRUMENT OF SERVICE AND REQUIRES THE PERMISSION OF THE LANDSCAPE ARCHITECT FOR USE. COPYRIGHT IS RESERVED BY THE LANDSCAPE ARCHITECT, DAVID M. LASHLEY.



4 SOD PLANTING
Scale: 1:10

A 2023-05-15 ISSUED FOR SPC

NO.	DATE	DESCRIPTION
SEAL:		NORTH:



LASHLEY + ASSOCIATES
LANDSCAPE ARCHITECTURE

202, 660 GLADSTONE AVENUE
OTTAWA, ON K1V 2E6

T 613 233 8579 x102
F 613 233 4051
W LashleyLA.com
E Mail@LashleyLA.com

PROJECT: 30 - 48 Chamberlain Avenue
30 - 48 CHAMBERLAIN AVENUE, OTTAWA, ONTARIO, K1S 1V9

DRAWING TITLE: Typical Details

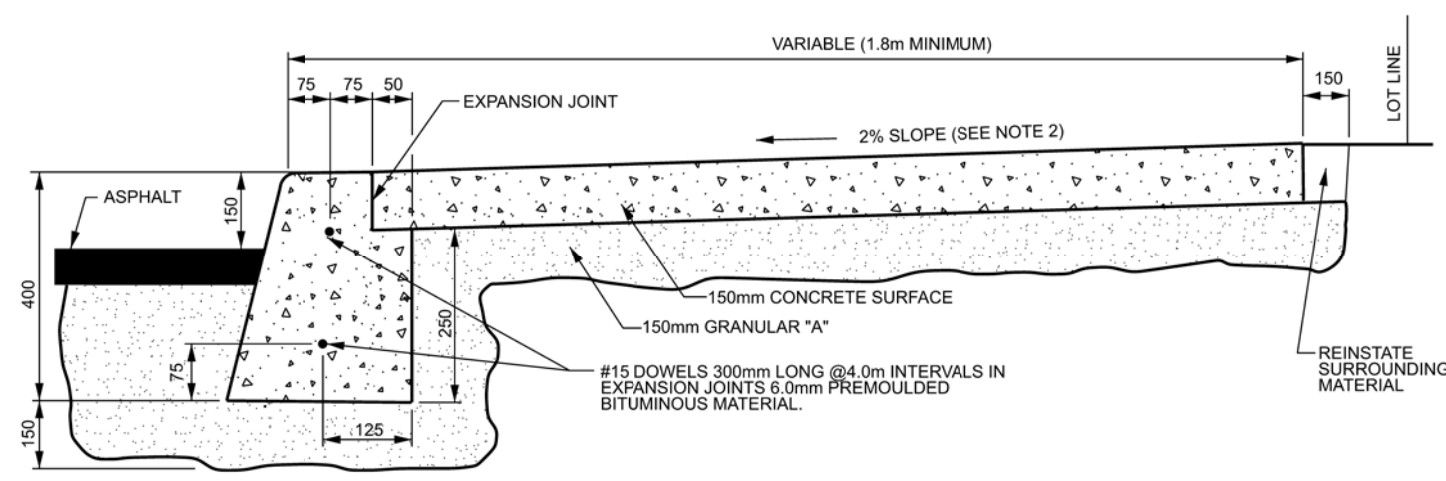
DATE: 2023-05-05	DRAWING NO.:
DRAWN SCALE: AS NOTED	L1-01
DRAWN BY: SX	
LA PROJECT NO.: 23855-11	REV NO.: 0



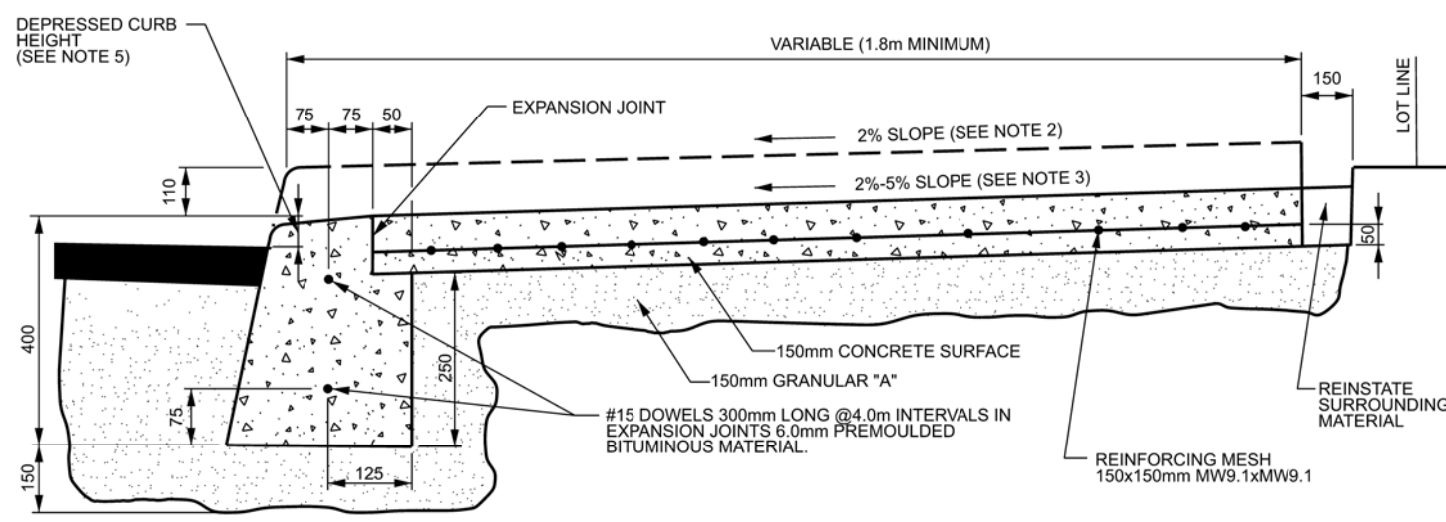
KEY PLAN, N.T.S.

GENERAL NOTES

1. ALL GENERAL SITE INFORMATION AND CONDITIONS COMPILED FROM ARCHITECT'S AND ENGINEER'S PLANS AND SURVEYS.
2. DO NOT SCALE THIS DRAWING.
3. REPORT ANY DISCREPANCIES PRIOR TO COMMENCING WORK. NO RESPONSIBILITY IS BORN BY THE LANDSCAPE ARCHITECT FOR UNKNOWN SUBSURFACE CONDITIONS.
4. REINSTATE ALL AREAS AND ITEMS DAMAGED AS A RESULT OF CONSTRUCTION ACTIVITIES TO THE SATISFACTION OF THE LANDSCAPE ARCHITECT.
5. DRAWING MAY NOT BE USED FOR CONSTRUCTION UNTIL SIGNED BY LANDSCAPE ARCHITECT AS ISSUED FOR CONSTRUCTION.
6. THE ACCURACY OF THE POSITION OF UTILITIES IS NOT GUARANTEED.
7. INDIVIDUAL UTILITY CO. MUST BE CONTACTED FOR CONFIRMATION OF UTILITY EXISTENCE AND LOCATION PRIOR TO DIGGING.
8. THIS DRAWING IS AN INSTRUMENT OF SERVICE AND REQUIRES THE PERMISSION OF THE LANDSCAPE ARCHITECT FOR USE. COPYRIGHT IS RESERVED BY THE LANDSCAPE ARCHITECT, DAVID M. LASHLEY.



TYPICAL SIDEWALK SECTION

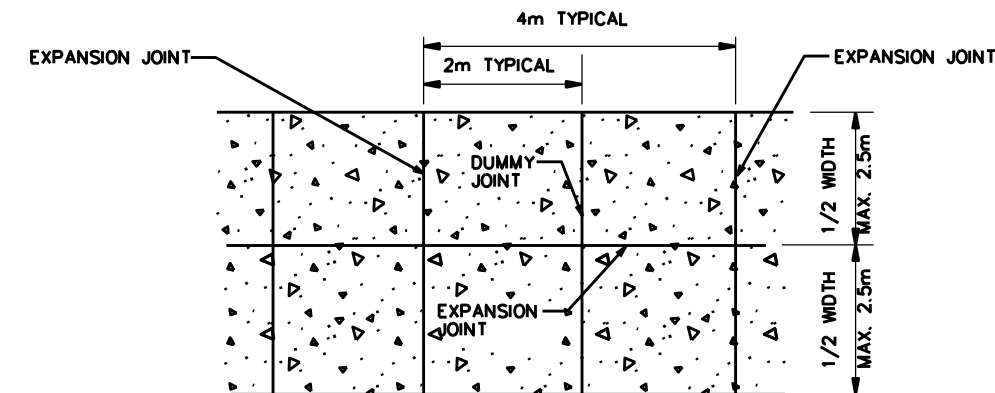


SECTION AT PRIVATE ENTRANCE AND PEDESTRIAN RAMPS

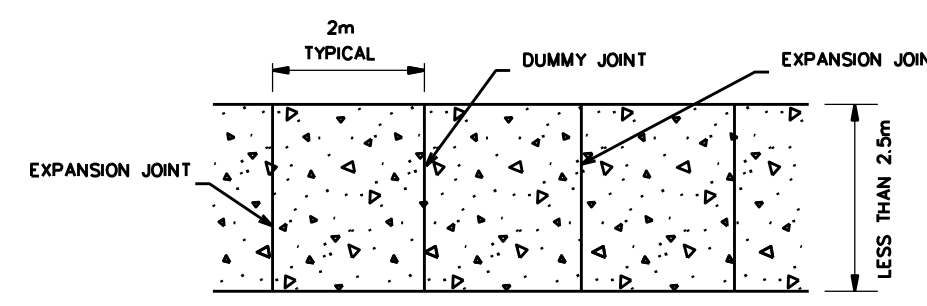
- NOTES:
1. ALL DIMENSIONS ARE IN MILLIMETRES UNLESS SHOWN OTHERWISE.
 2. THE MAXIMUM SLOPE IS NOT TO EXCEED 2%.
 3. FOR CURB RAMPS, SLOPE OF 2% TO 5%, MAXIMUM 8%.
 4. EXPANSION AND DUMMY JOINTS AS PER SCS.
 5. DEPRESSED CURB HEIGHT - FOR PEDESTRIAN CURB RAMPS 0 TO 6 mm AND FOR PRIVATE ENTRANCES 0 TO 13mm.

N.T.S.

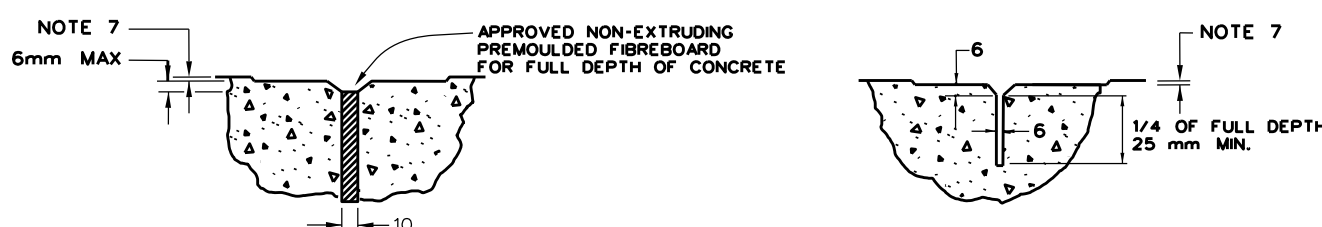
1 CONCRETE BARRIER CURB WITH SIDEWALK
Scale: N.T.S.



PLAN: SIDEWALK 2.5m WIDE AND OVER



PLAN: SIDEWALK LESS THAN 2.5m WIDE

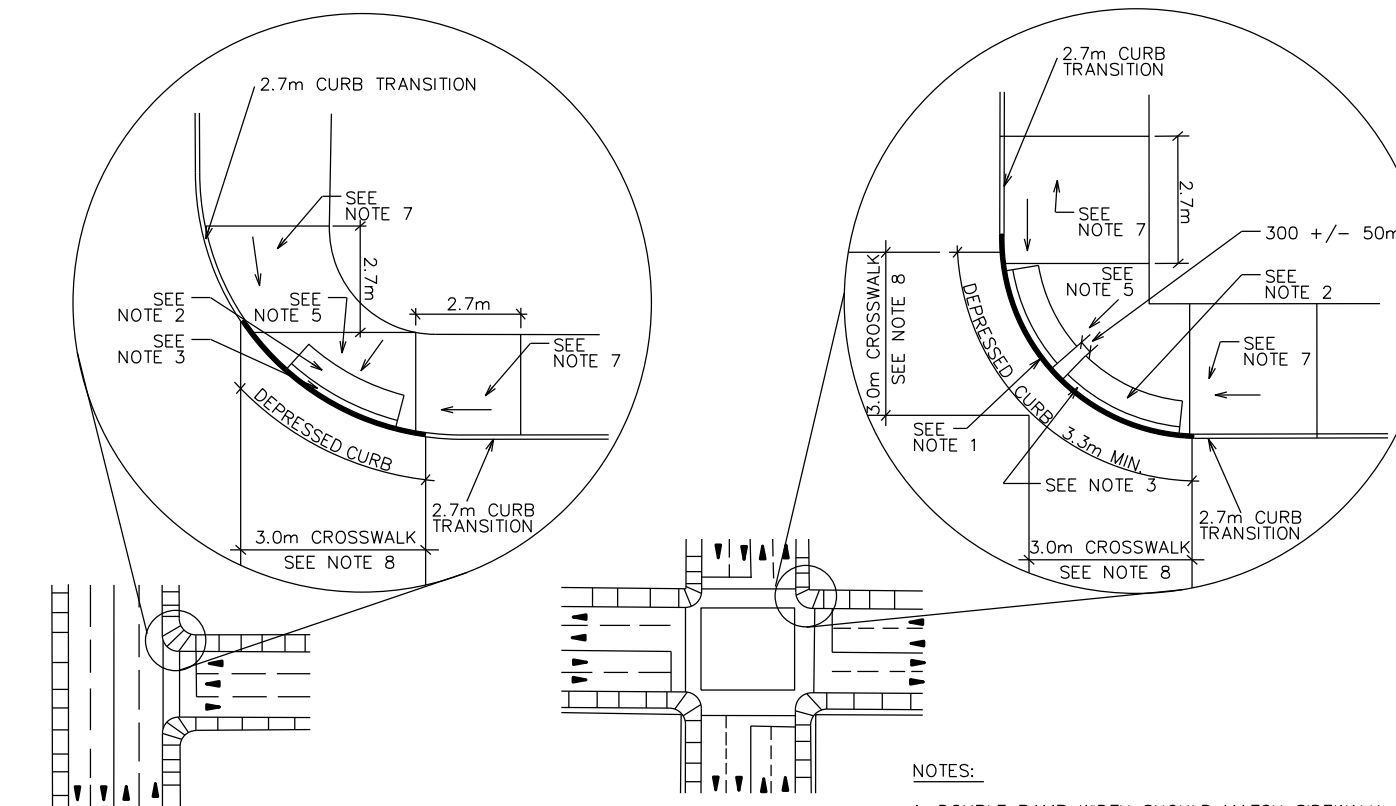
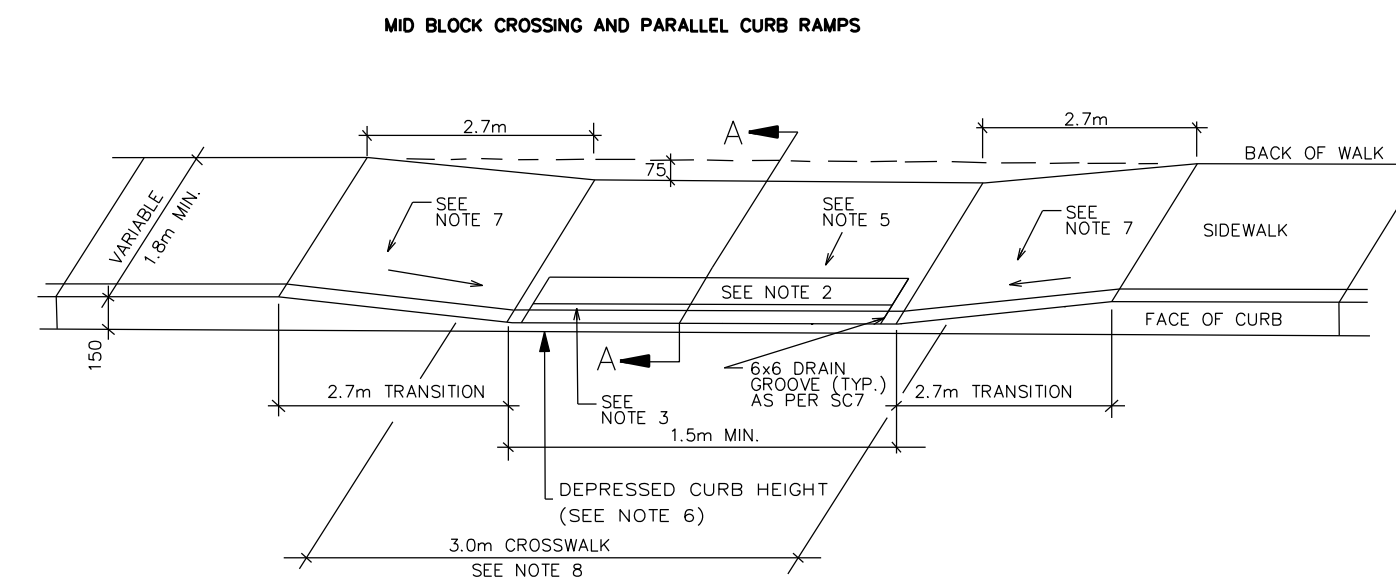


EXPANSION JOINT PROFILE

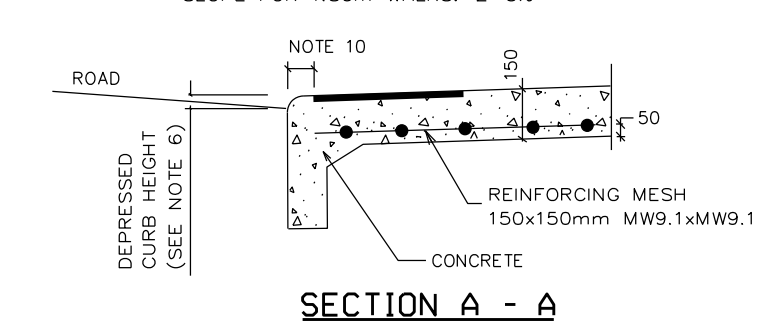
DUMMY JOINT PROFILE

- NOTES:
1. EXPANSION JOINTS IN SIDEWALK SHALL BE IN LINE WITH EXPANSION JOINTS IN CURB.
 2. TRANSVERSE EXPANSION JOINTS ARE REQUIRED AT THE ENDS, THE MIDPOINT, AT INTERVALS OF 4m MAXIMUM AND ALSO TO ISOLATE OBSTRUCTIONS FROM SIDEWALK, HYDRANTS, POLES, BUILDINGS, ETC.
 3. EDGES AND JOINTS ARE TO BE FINISHED WITH A 75mm EDGING TOOL.
 4. ALL CONCRETE SIDEWALKS ARE TO HAVE A BROOM FINISH UNLESS OTHERWISE SPECIFIED.
 5. ALL DIMENSIONS ARE IN MILLIMETRES UNLESS SHOWN OTHERWISE.
 6. INSTALL DUMMY TRANSVERSE JOINTS AS REQUIRED SO THERE IS A MAXIMUM SPACING OF 2m BETWEEN ALL JOINTS.
 7. SMOOTH ALL TOOLED EDGES TO A MAXIMUM DEPTH OF 1mm.

2 SIDEWALK CONSTRUCTION JOINTS
Scale: N.T.S.



SECTION THROUGH RAMP TOTAL (SEE NOTE 5)
SLOPE FOR 1.80m WALKS: 2-5%



SECTION A - A

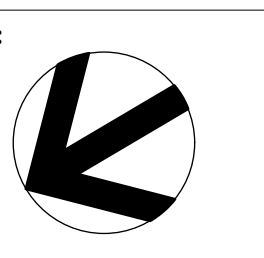
- NOTES:
1. DOUBLE RAMP WIDTH SHOULD MATCH SIDEWALK WIDTH, BE A MINIMUM OF 3.3m WIDE AND PERMIT WHEELCHAIRS TO ENTER CROSSING AT RIGHT ANGLES.
 2. APPROVED 610 x WIDTH OF CURB RAMP (1500 MM) TACTILE WALKING SURFACE INDICATOR, RADIUS TO MATCH CURB
 3. 150 TO 200 GAP
 4. ALL DIMENSIONS ARE IN MILLIMETRES UNLESS SHOWN OTHERWISE.
 5. FOR TRANSITION AREA, MAXIMUM SLOPE OF 2% AND FOR PRIVATE ENTRANCES 0 TO 25mm.
 6. DEPRESSED CURB HEIGHT - FOR PEDESTRIAN CURB RAMPS 0 TO 6 mm.
 7. FOR CURB RAMPS SLOPE OF 2% TO 5%, MAXIMUM 8%.
 8. SUBJECT TO AVOIDANCE OF MEDIANS, CROSSWALK LINES TO CENTRED ON THE CURB RAMP.
 9. FOR RETROFIT APPLICATIONS ONLY
 10. FOR MONOLITHIC SIDEWALK, TWS SHALL BE 300 TO 350mm BACK FROM CURB FACE.

3 PEDESTRIAN CURB RAMP WITHOUT BOULEVARD
Scale: N.T.S.

A 2023-05-15 ISSUED FOR SPC

NO.	DATE	DESCRIPTION
SEAL:		

SEAL: [Signature]



202, 660 GLADSTONE AVENUE
OTTAWA, ON K1V 2E5
T 613 233 8579 x102
F 613 233 4051
W LashleyLA.com
E Mail@LashleyLA.com

PROJECT: **30 - 48 Chamberlain Avenue**
30 - 48 CHAMBERLAIN AVENUE,
OTTAWA, ONTARIO, K1S 1V9

DRAWING TITLE:
Typical Details

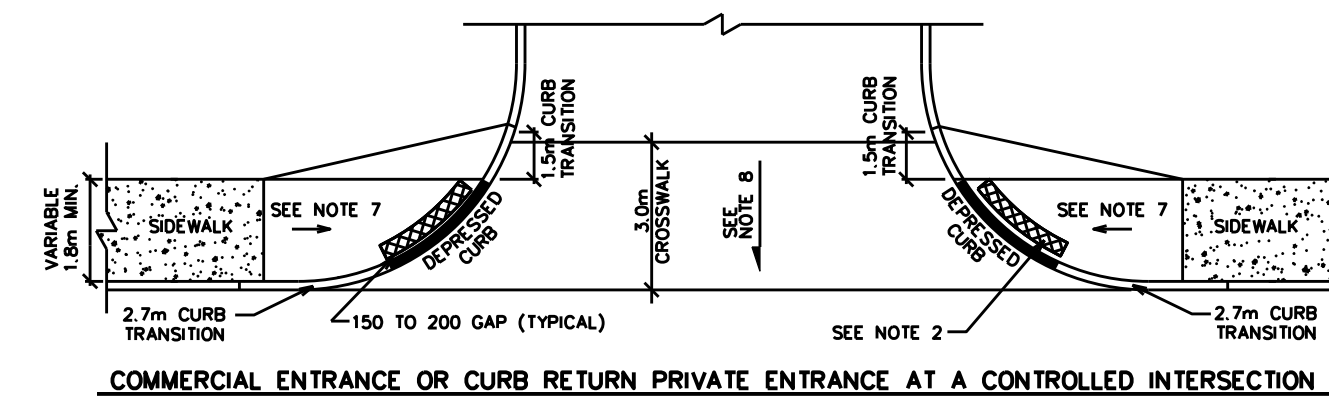
DATE:	2023-05-05	DRAWING NO.:	
DRAWN SCALE:	AS NOTED	L1-02	
DRAWN BY:	SX		
LA PROJECT NO.:	23855-11	REV NO.:	0



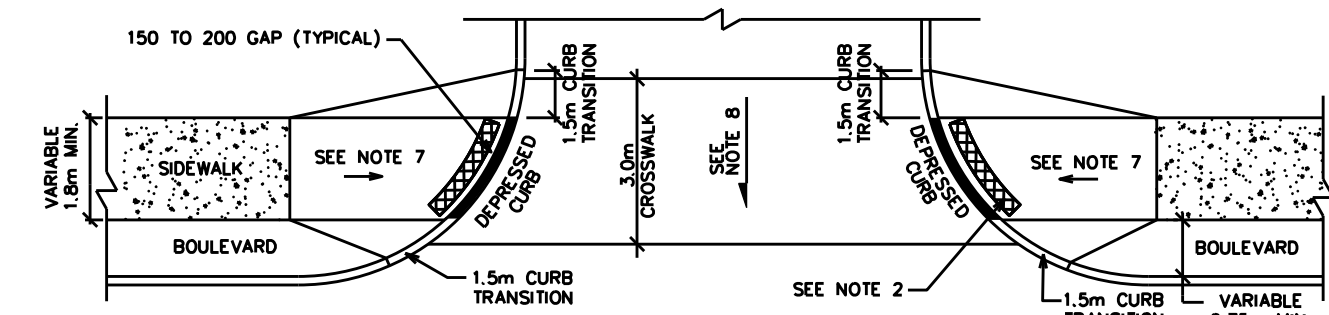
KEY PLAN, NTS

GENERAL NOTES

1. ALL GENERAL SITE INFORMATION AND CONDITIONS COMPILED FROM ARCHITECT'S AND ENGINEER'S PLANS AND SURVEYS.
2. DO NOT SCALE THIS DRAWING.
3. REPORT ANY DISCREPANCIES PRIOR TO COMMENCING WORK. NO RESPONSIBILITY IS BORN BY THE LANDSCAPE ARCHITECT FOR UNKNOWN SUBSURFACE CONDITIONS.
4. REINSTATE ALL AREAS AND ITEMS DAMAGED AS A RESULT OF CONSTRUCTION ACTIVITIES TO THE SATISFACTION OF THE LANDSCAPE ARCHITECT.
5. DRAWING MAY NOT BE USED FOR CONSTRUCTION UNTIL SIGNED BY LANDSCAPE ARCHITECT AS ISSUED FOR CONSTRUCTION.
6. THE ACCURACY OF THE POSITION OF UTILITIES IS NOT GUARANTEED.
7. INDIVIDUAL UTILITY CO. MUST BE CONTACTED FOR CONFIRMATION OF UTILITY EXISTENCE AND LOCATION PRIOR TO DIGGING.
8. THIS DRAWING IS AN INSTRUMENT OF SERVICE AND REQUIRES THE PERMISSION OF THE LANDSCAPE ARCHITECT FOR USE. COPYRIGHT IS RESERVED BY THE LANDSCAPE ARCHITECT, DAVID M. LASHLEY.



COMMERCIAL ENTRANCE OR CURB RETURN PRIVATE ENTRANCE AT A CONTROLLED INTERSECTION

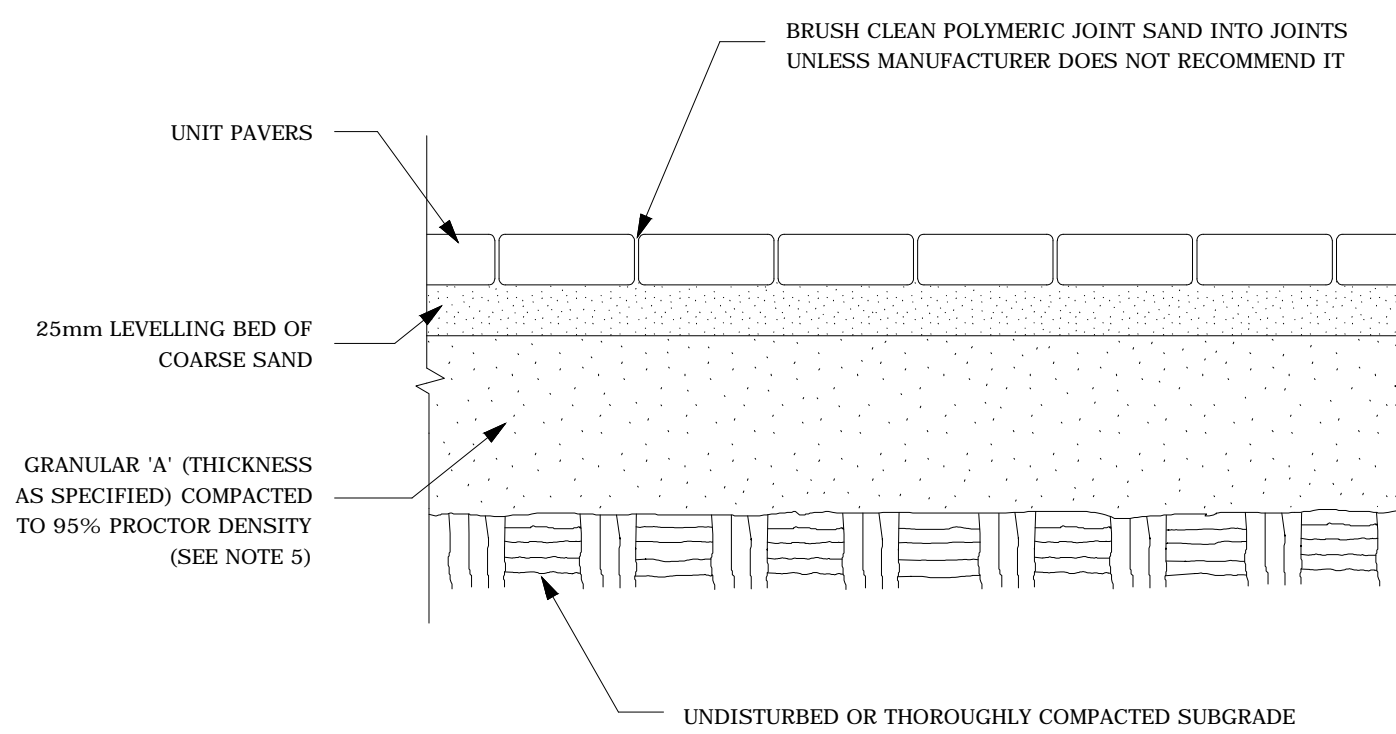


COMMERCIAL ENTRANCE OR CURB RETURN PRIVATE ENTRANCE WITH BOULEVARD AT A CONTROLLED INTERSECTION

NOTES:

1. ALL DIMENSIONS ARE IN MILLIMETRES UNLESS SHOWN OTHERWISE.
2. APPROVED 610 X WIDTH OF CURB RAMP (150MM) TACTILE WALKING SURFACE INDICATOR, RADIUS TO MATCH CURB. DRAIN GROOVES AS PER SC7.
3. CURB DETAILS SEE SC1.1, SC1.2 AND SC1.3.
4. SIDEWALK DETAILS SEE SC2 AND SC3.
5. CURB RAMPS AS PER SC6 AND SC7.
6. CROSSWALK LINES TO BE CENTRED ON THE CURB RAMP.
7. FOR CURB RAMPS, SLOPE OF 2% TO 5% MAXIMUM 8%.
8. MAXIMUM SLOPE VARIES, SEE PRIVATE APPROACH BYLAW.
9. CONTROLLED INTERSECTION MEANS AN ENTRANCE LOCATED AT A TRAFFIC SIGNAL OR ALL-WAY STOP CONTROL.

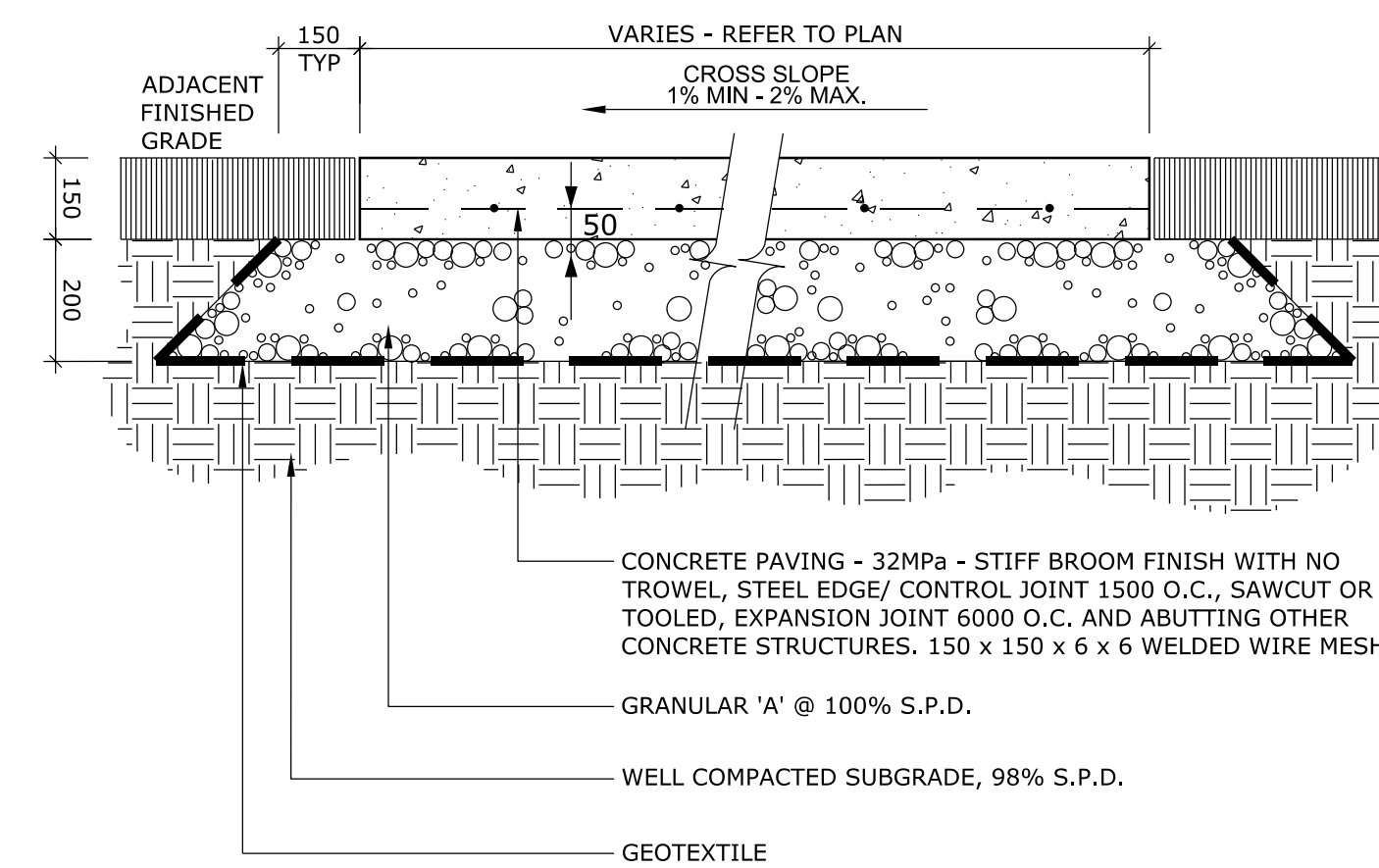
1 CURB RETURN ENTRANCES - CONTROLLED INTERSECTIONS
Scale: N.T.S



NOTES:

1. THE LEVELLING COURSE (BEDDING SAND) SHALL BE PLACED LOOSE, IN A UNIFORM LAYER AT A MAXIMUM DEPTH OF 25mm TO ACHIEVE THE FINAL COMPACTED THICKNESS AND GRADE AS SPECIFIED
2. INSTALL SOLID EDGE RESTRAINT BETWEEN UNIT PAVERS AND ANY SOFT SURFACE (SOD, PLANTING BED, ETC.)
3. UNIT PAVERS ARE THEN PLACED ON TOP OF THE LEVELLING COURSE AND ADDITIONAL SAND SWEEPED BETWEEN THE UNIT PAVERS
4. THE UNIT PAVERS ARE THEN VIBRATED INTO PLACE WITH A VIBRA-PLATE AND WATER IS ADDED TO ASSIST IN THE SETTLING OF THE JOINT SAND
5. GRANULAR 'A' DEPTH TO BE 100mm FOR PEDESTRIAN AREAS AND 150mm FOR VEHICULAR ACCESSES. OR AS RECOMMENDED BY GEOTECHNICAL INVESTIGATION
6. USE OF THIS DETAIL REQUIRES THE PRIOR APPROVAL OF THE GENERAL MANAGER

2 UNIT PAVING - ON GRANULAR BASE
Scale: N.T.S



NOTES:

1. ALL MEASUREMENTS ARE IN MILLIMETRES UNLESS OTHERWISE NOTED
2. CONCRETE SHALL BE 32MPa CLASS C-2 MEETING THE REQUIREMENTS OF S.P. F-3510 AND PLACED IN ACCORDANCE WITH S.P. F-9040
3. GRANULAR 'A' SHALL MEET THE REQUIREMENTS OF OPSS 1010
4. APPROVED NON-WOVEN CLASS 1 GEOTEXTILE AS PER MS-22.15 WHEN WARRANTED BY SOIL CONDITION, SUBJECT TO APPROVAL BY THE CONTRACT ADMINISTRATOR

3 LIGHT DUTY WALKWAY CONCRETE PAVING
Scale: N.T.S

A 2023-05-15 ISSUED FOR SPC

NO.	DATE	DESCRIPTION
SEAL:		NORTH:



202, 660 GLAISTONE AVENUE
OTTAWA, ONTARIO K1S 2E5
T 613 233 8579 x102
F 613 233 4051
W LashleyLA.com
E Mail@LashleyLA.com

PROJECT:
30 - 48 Chamberlain Avenue
30 - 48 CHAMBERLAIN AVENUE,
OTTAWA, ONTARIO, K1S 1V9

DRAWING TITLE:
Typical Details

DATE:	2023-05-05	DRAWING NO.:	
DRAWN SCALE:	AS NOTED	L1-03	REV NO.: 0
DRAWN BY:	SX		
LA PROJECT NO.:	23855-1		



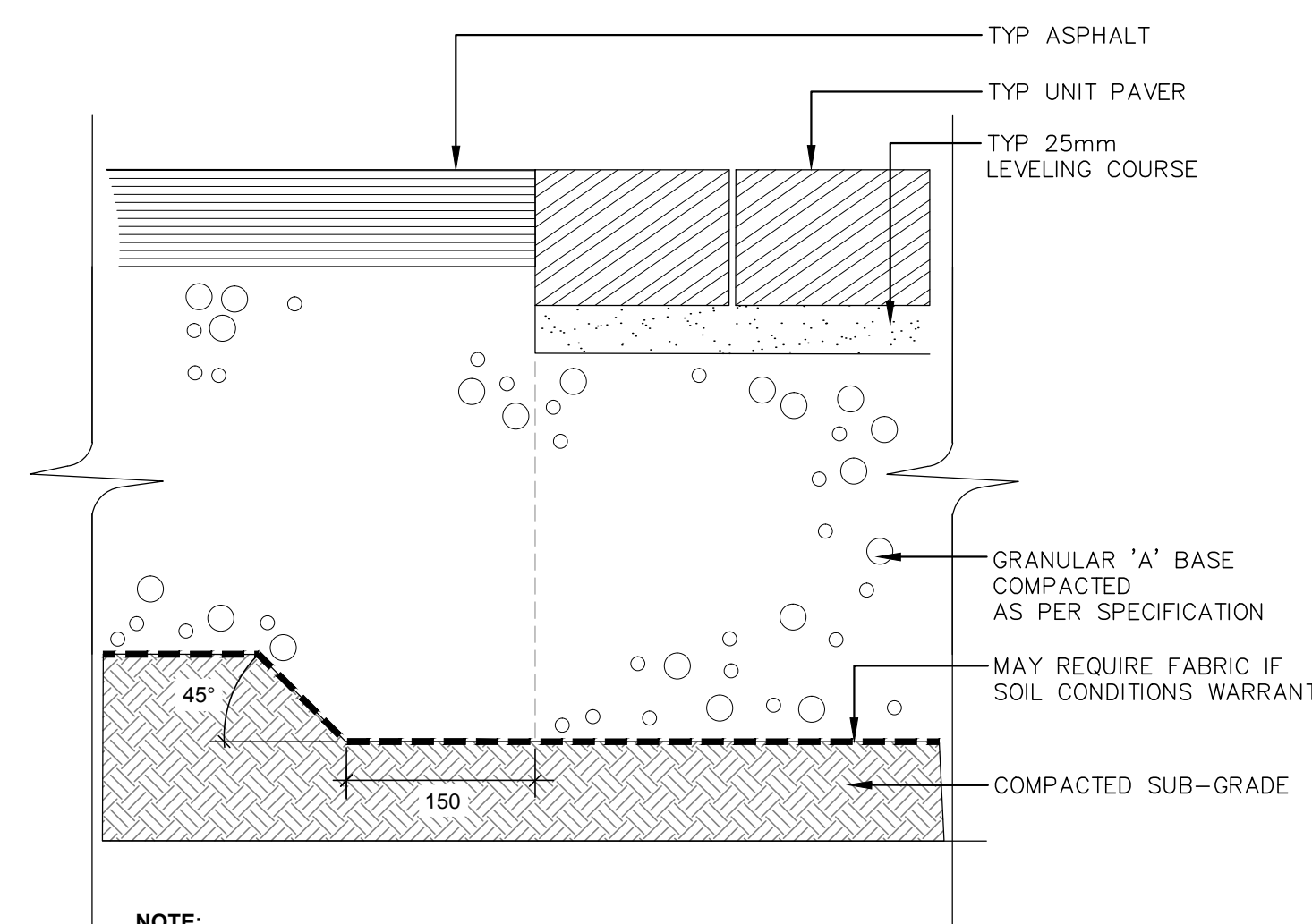
KEY PLAN, N.T.S

GENERAL NOTES

1. ALL GENERAL SITE INFORMATION AND CONDITIONS COMPILED FROM ARCHITECT'S AND ENGINEER'S PLANS AND SURVEYS.
2. DO NOT SCALE THIS DRAWING.
3. REPORT ANY DISCREPANCIES PRIOR TO COMMENCING WORK. NO RESPONSIBILITY IS BORN BY THE LANDSCAPE ARCHITECT FOR UNKNOWN SUBSURFACE CONDITIONS.
4. REINSTATE ALL AREAS AND ITEMS DAMAGED AS A RESULT OF CONSTRUCTION ACTIVITIES TO THE SATISFACTION OF THE LANDSCAPE ARCHITECT.
5. DRAWING MAY NOT BE USED FOR CONSTRUCTION UNTIL SIGNED BY LANDSCAPE ARCHITECT AS ISSUED FOR CONSTRUCTION.
6. THE ACCURACY OF THE POSITION OF UTILITIES IS NOT GUARANTEED.
7. INDIVIDUAL UTILITY CO. MUST BE CONTACTED FOR CONFIRMATION OF UTILITY EXISTENCE AND LOCATION PRIOR TO DIGGING.
8. THIS DRAWING IS AN INSTRUMENT OF SERVICE AND REQUIRES THE PERMISSION OF THE LANDSCAPE ARCHITECT FOR USE. COPYRIGHT IS RESERVED BY THE LANDSCAPE ARCHITECT, DAVID M. LASHLEY.

NOTES:

1. CONTRACTOR TO SUBMIT SHOP DRAWING.
2. ALL LUMBER TO BE EASTERN WHITE CEDAR #1 SELECT.
3. ALL FASTENERS TO BE GALVANIZED.

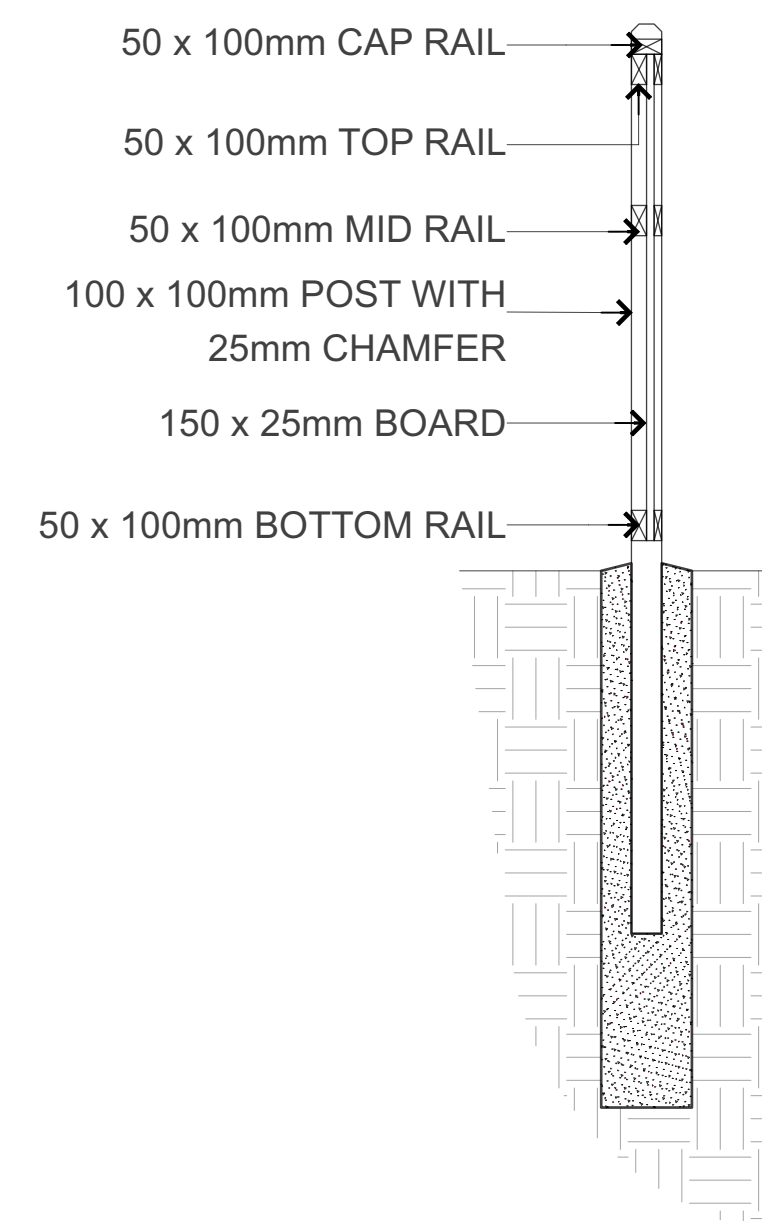


NOTE:

1. CROSS SLOPE WALKWAYS IN DIRECTION OF NATURAL DRAINAGE TO PROVIDE POSITIVE DRAINAGE OFF ALL WALKWAYS
2. DEPTHS OF MATERIALS MAY VARY, WHERE DIFFERENCE IN DEPTH EXISTS, TRANSITION AS SHOWN.

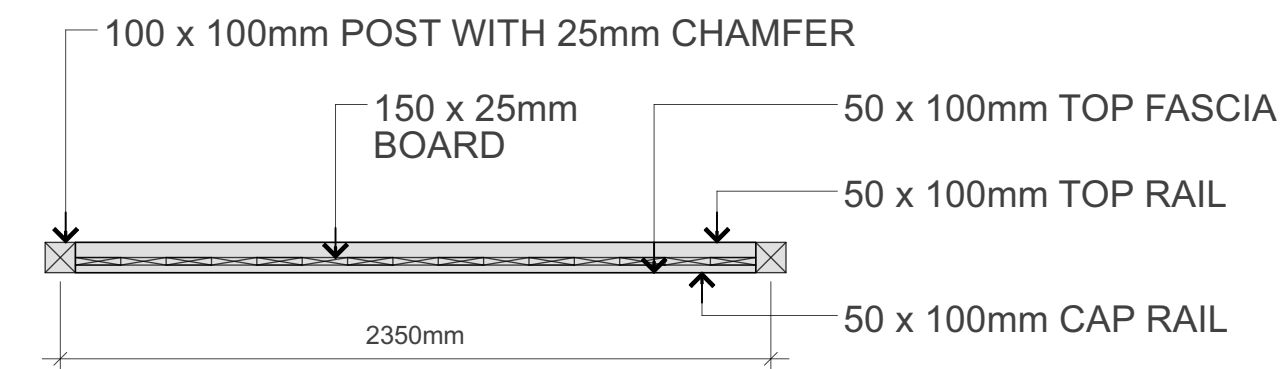
1
L1-04 ASHALT PAVING AT UNIT PAVING
Scale: N.T.S

SECTION

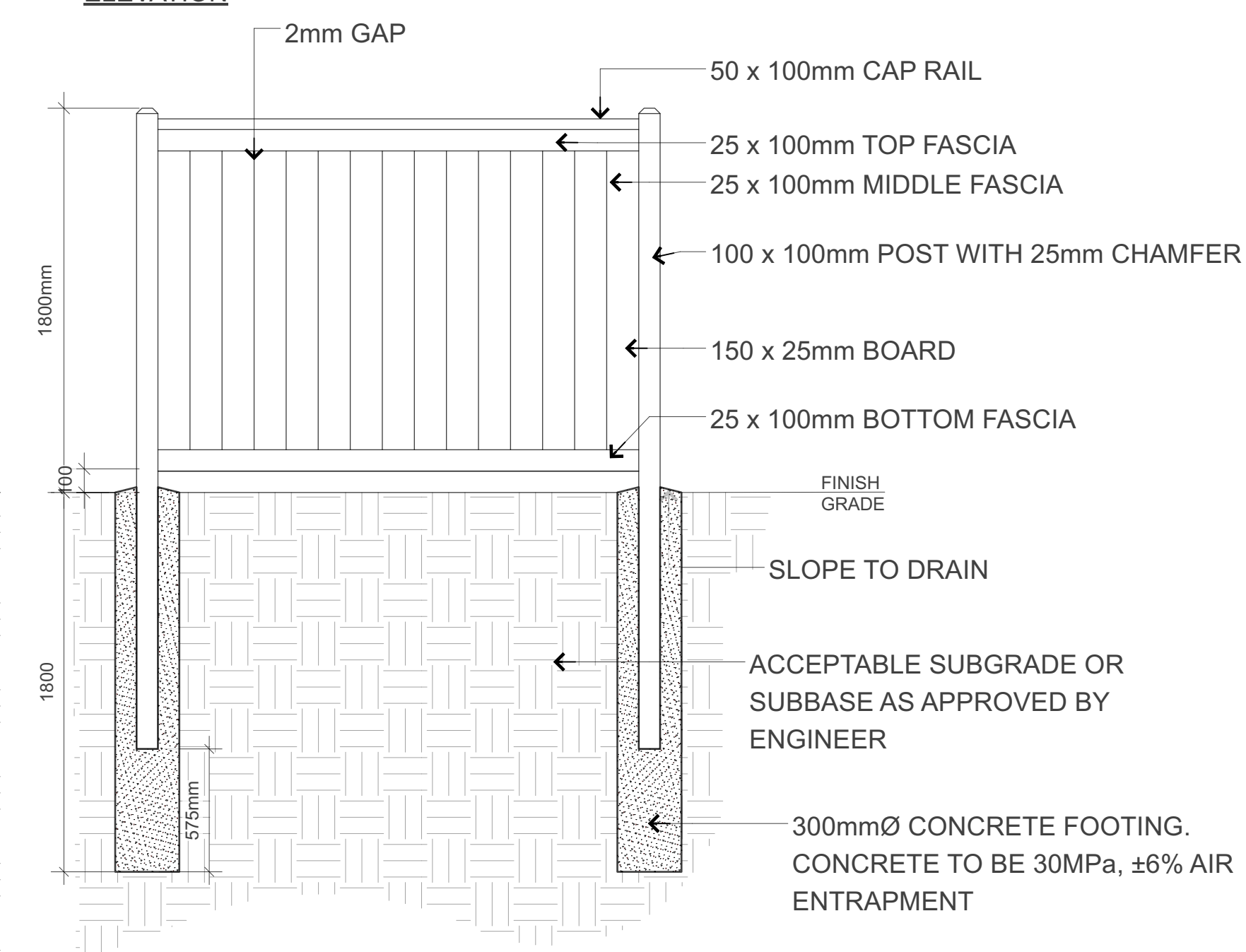


2
L1-04 WOOD FENCE
Scale: 1:25

TOP VIEW



ELEVATION



A 2023-05-15 ISSUED FOR SPC

NO.	DATE	DESCRIPTION
SEAL:		NORTH:

LASHLEY + ASSOCIATES
LANDSCAPE ARCHITECTURE

202, 660 GLADSTONE AVENUE
OTTAWA, ONTARIO K1S 2E5
T 613 233 8579 x102
F 613 233 4051
W LashleyLA.com
E Mail@LashleyLA.com

PROJECT:
30 - 48 Chamberlain Avenue
30 - 48 CHAMBERLAIN AVENUE,
OTTAWA, ONTARIO, K1S 1V9

DRAWING TITLE:
Typical Details

DATE: 2023-05-05	DRAWING NO.:
DRAWN SCALE: AS NOTED	L1-04
DRAWN BY: SX	
LA PROJECT NO.: 23855-1	REV NO.: 0