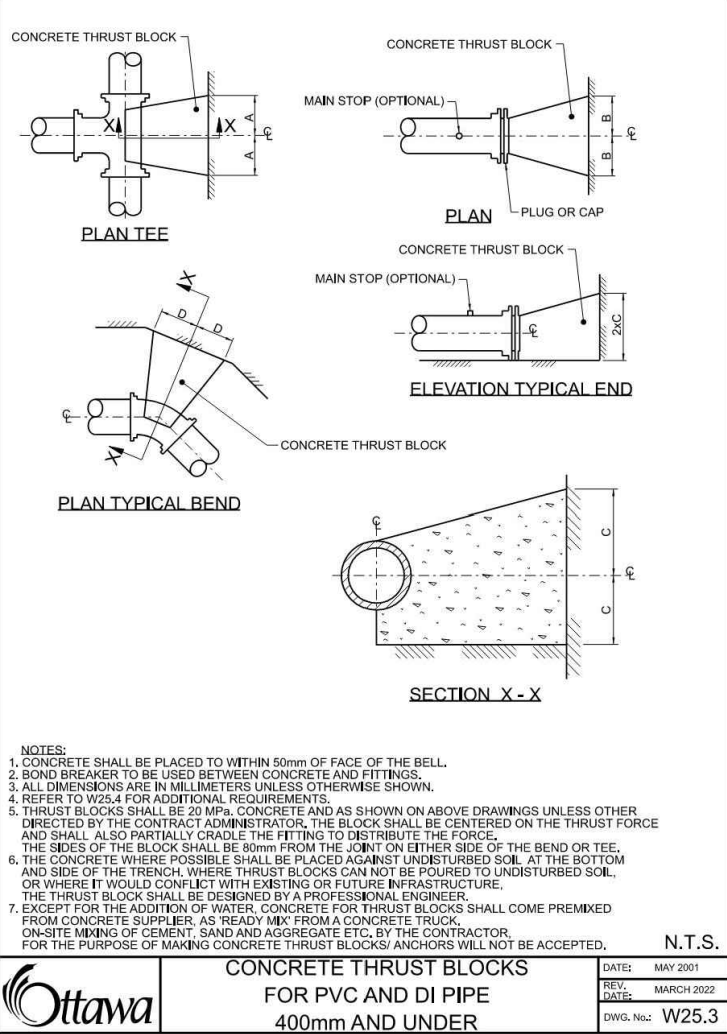
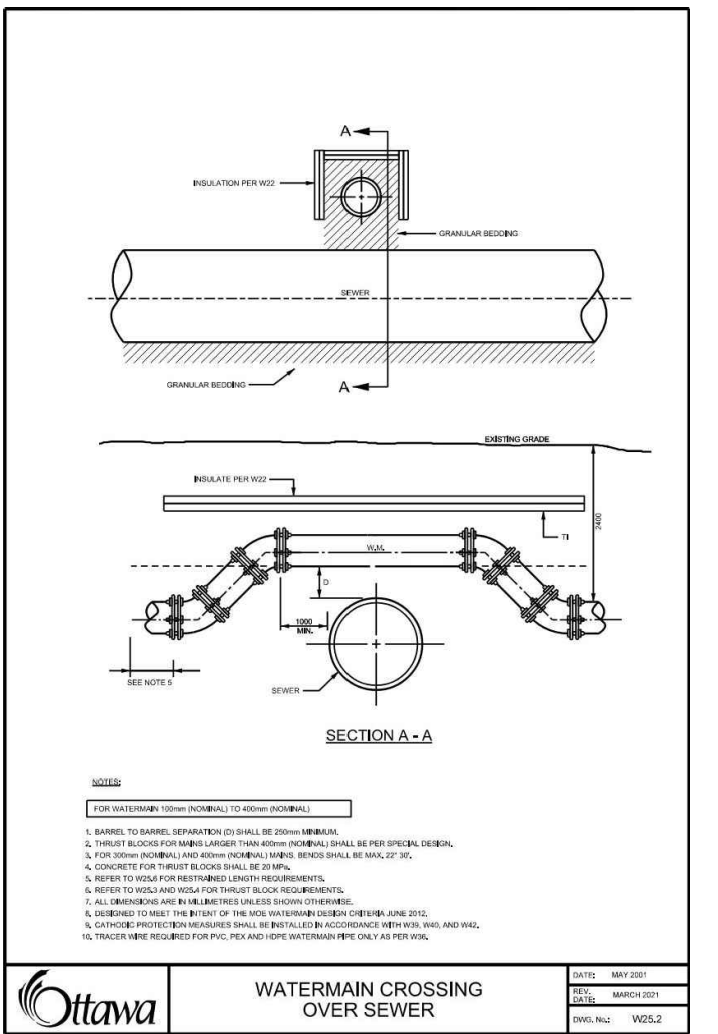
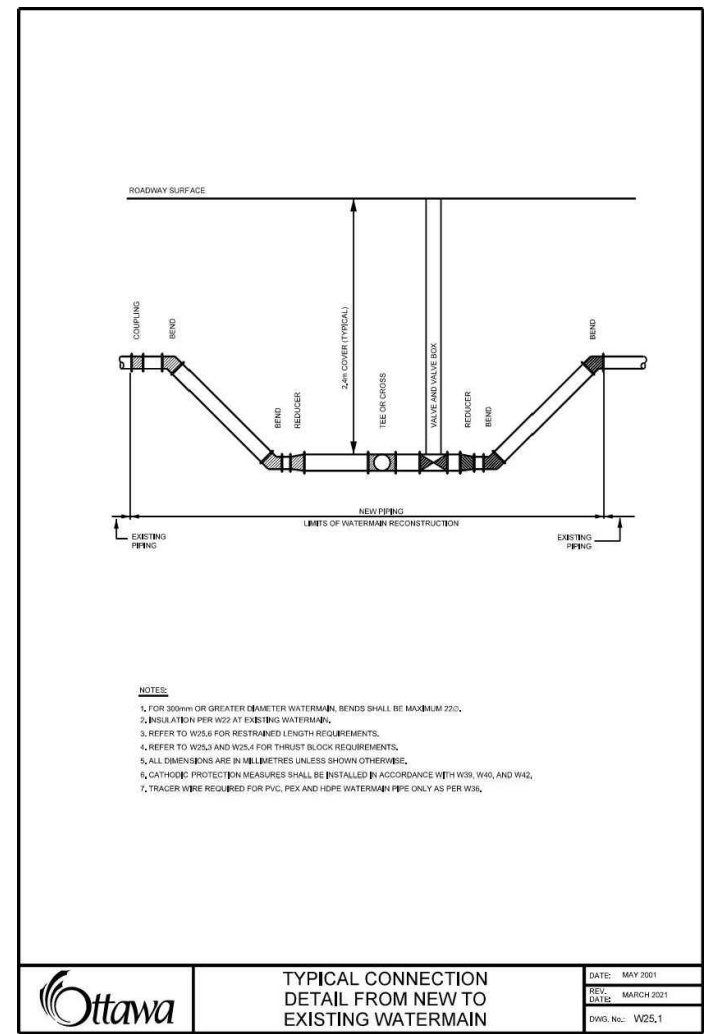
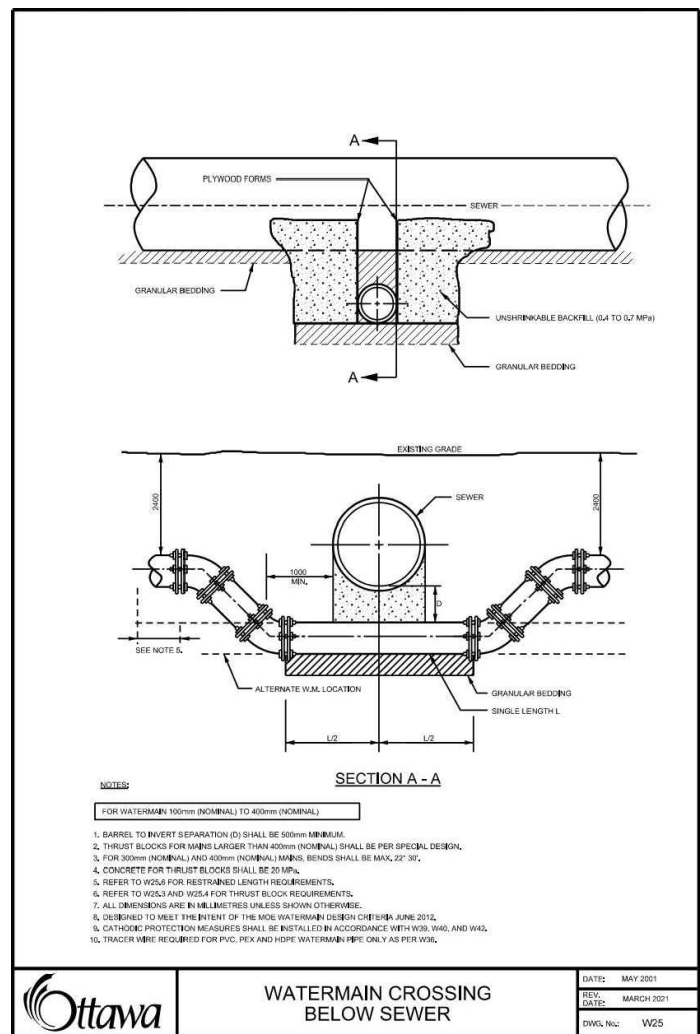


600-158 Sterling Road
Toronto, ON M6R 2B7

T +1 416 596 8300
ZEIDLER.COM

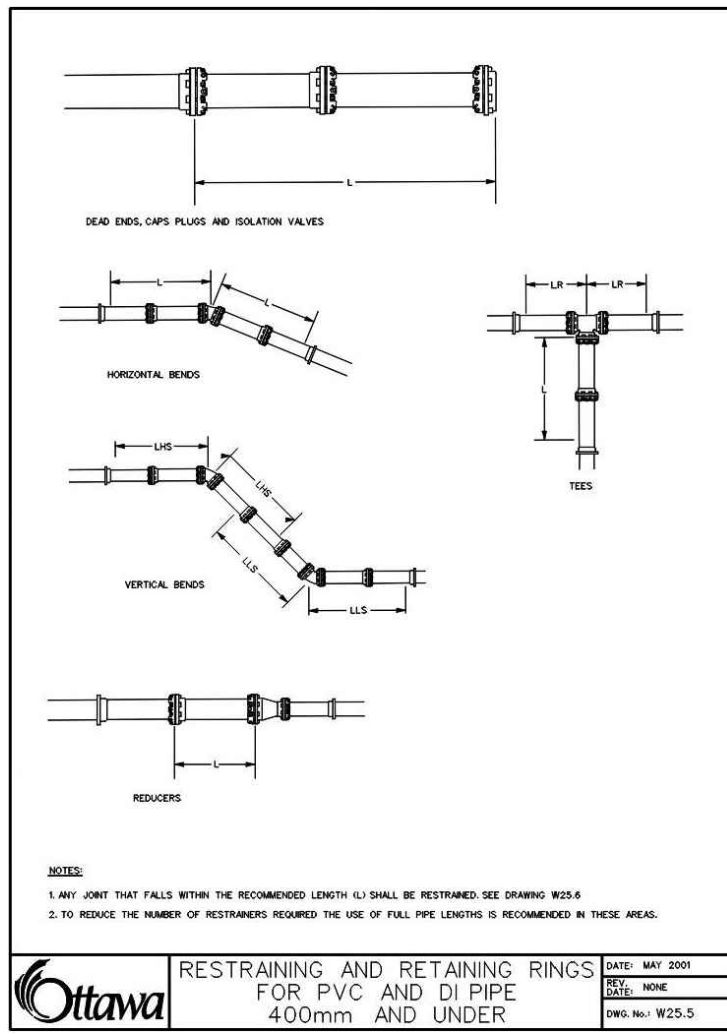
406-47 Clarence Street
Ottawa, ON K1N 9K1

T +1 613 234 2274
NEUFARCHITECTES.COM



THRUST BLOCK DIMENSION TABLES FOR PVC AND DI PIPE 400mm AND UNDER

DIAMETER	DIMENSION NOTED ON WELLS			
	A	B	C	D
102	200	200	200	200
152	300	300	300	300
203	400	400	400	400
254	500	500	500	500
305	600	600	600	600
406	750	750	750	750



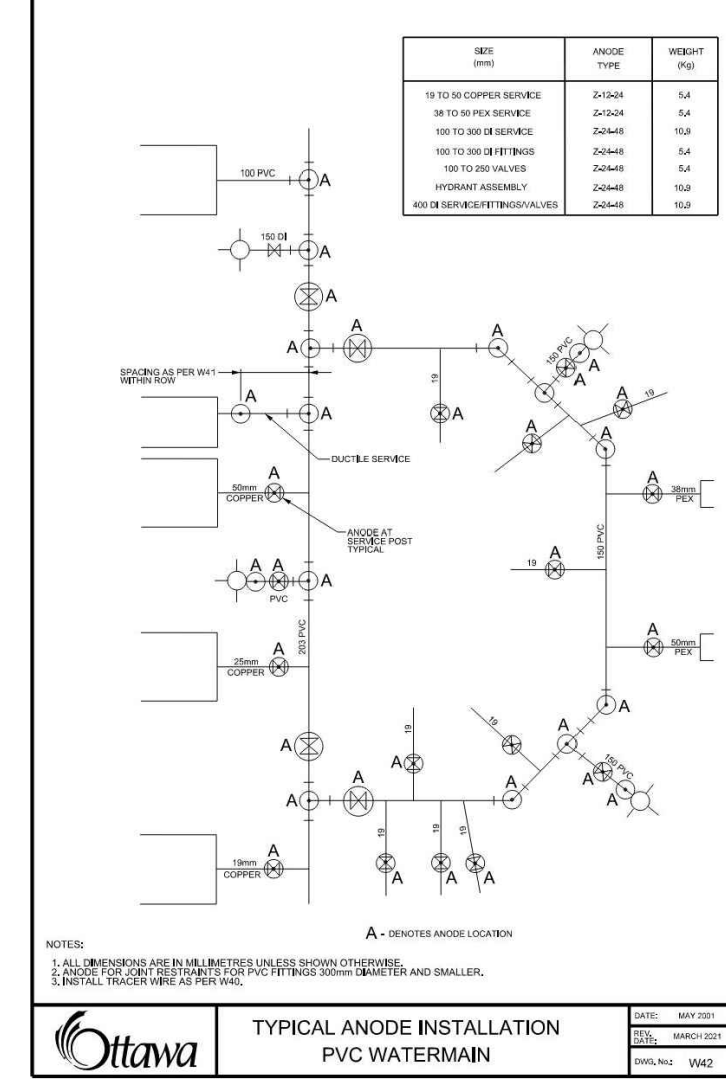
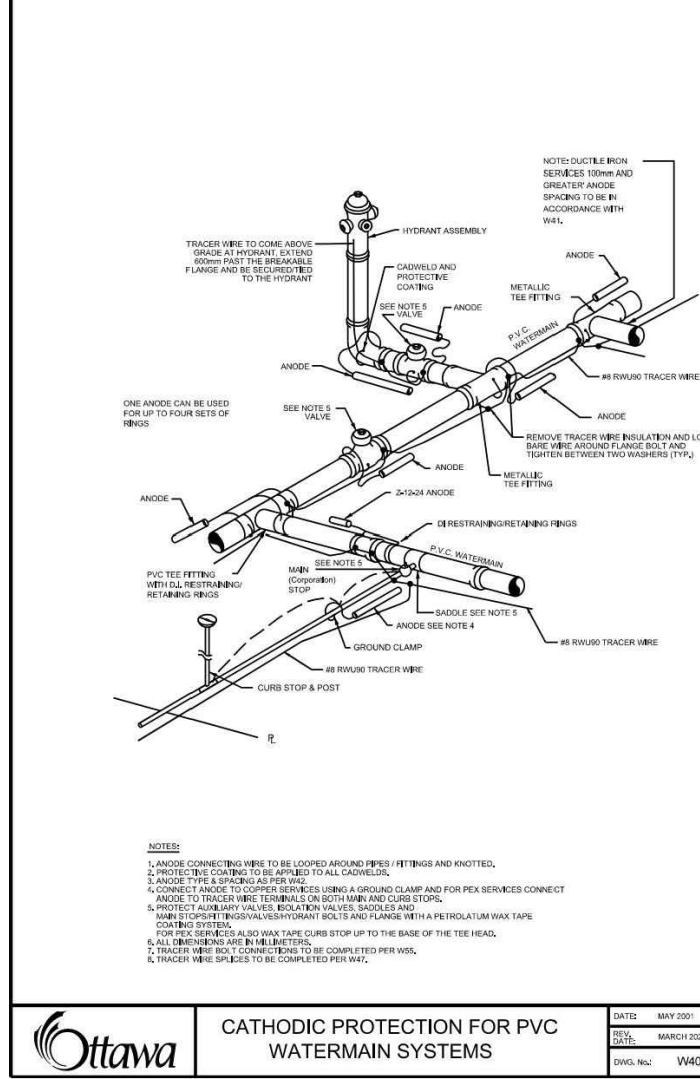
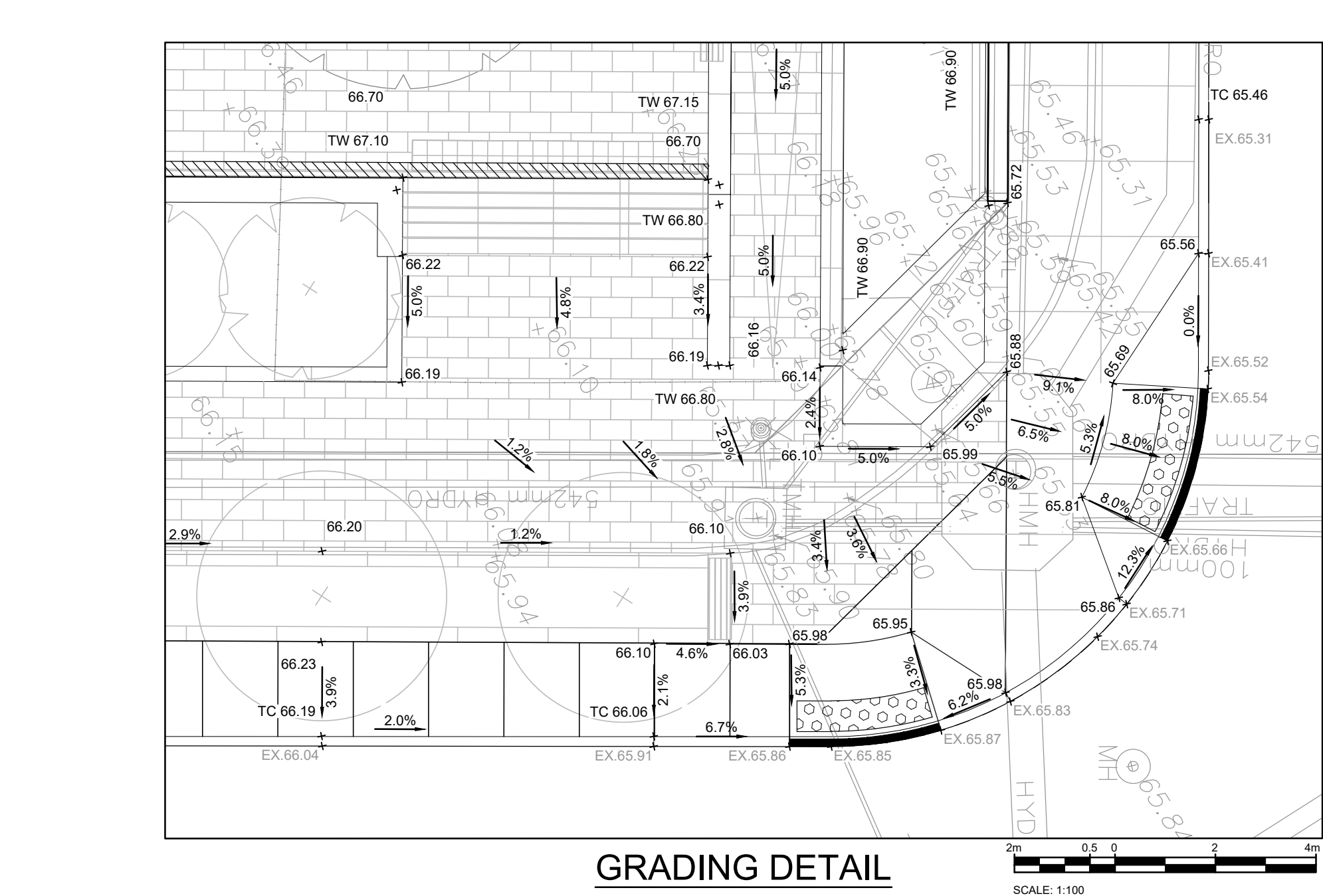
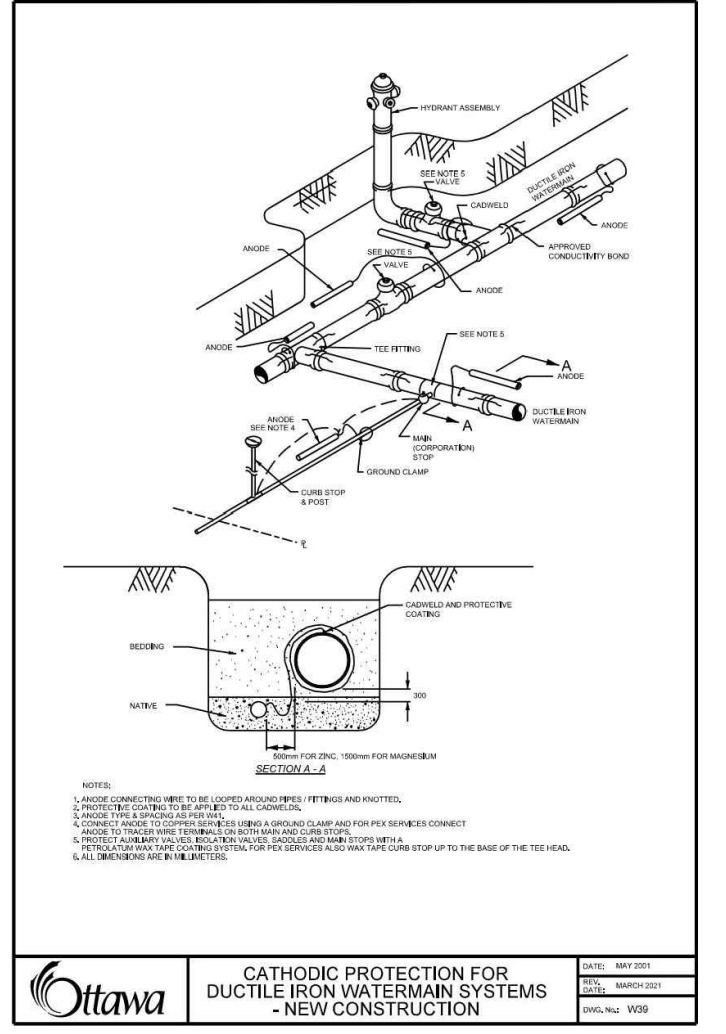
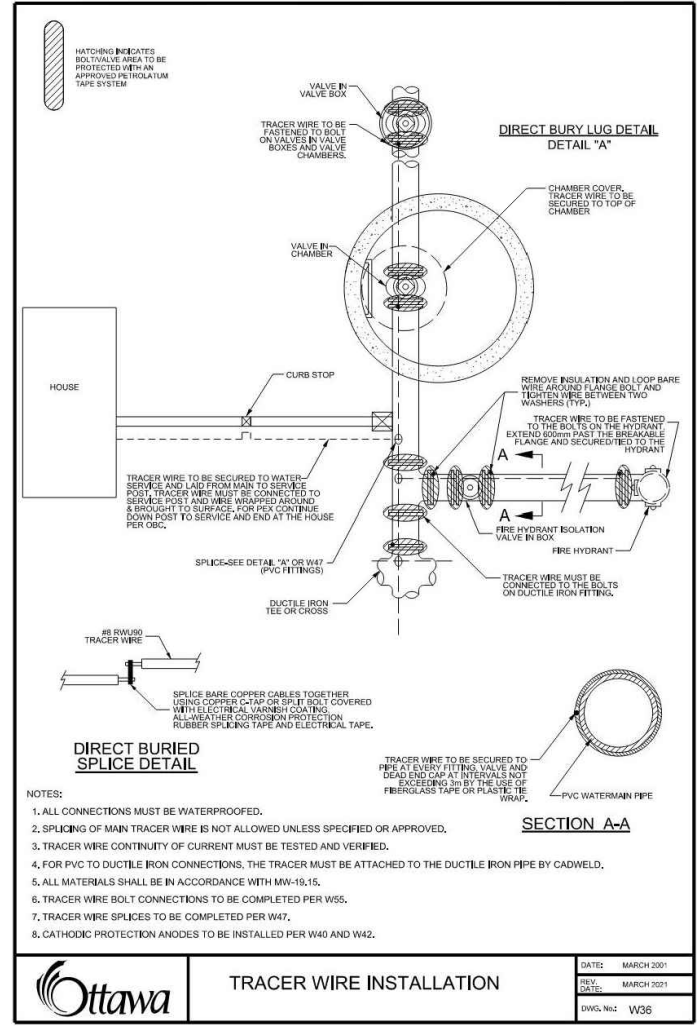
TABLES OF RESTRAINED LENGTHS FOR PVC AND DI PIPE 400mm AND UNDER

RESTRAINTS	LARGER DIAMETER SIZES (TO BE RESTRAINED)					
	100mm	150mm	200mm	250mm	300mm	400mm
SMALLER DIAMETER (UNRESTRAINED)						
100mm	N/A	3	6	8	10	14
150mm	N/A	N/A	4	6	9	13
200mm	N/A	N/A	N/A	3	6	11
250mm	N/A	N/A	N/A	N/A	4	9
300mm	N/A	N/A	N/A	N/A	N/A	5
400mm	N/A	N/A	N/A	N/A	N/A	N/A

NOTE

COPYRIGHT © ZEIDLER ARCHITECTURE INC.

CONTRACTOR MUST CHECK AND VERIFY ALL DIMENSIONS ON THE JOB. ANY DISCREPANCY OR CONTRADICTORY INFORMATION WITHIN THIS SET OF DRAWINGS AND / OR OTHER CONSULTANTS' DRAWINGS MUST BE BROUGHT TO THE ATTENTION OF THE ARCHITECT BEFORE PROCEEDING.



SANITARY SEWER DATA									
FROM		LOCATION	TO	DIAMETER	MATERIAL	CLASS	LENGTH	INVERT ELEVATIONS	
								UPSTREAM	DOWNSTREAM
CAP AT BLDG		NICHOLAS ST. CONNECTION*		150mm	PVC	SDR-35	4.9m	63.66	63.56*

*INVERT AT TOP BEND. CONNECT TO EXISTING PIPE AS PER CITY OF OTTAWA STD. S11.

STORM SEWER DATA									
FROM		LOCATION	TO	DIAMETER	MATERIAL	CLASS	LENGTH	INVERT ELEVATIONS	
								UPSTREAM	DOWNSTREAM
CAP		DALY AVE. CONNECTION*		200mm	PVC	SDR-35	9.1m	62.37	62.19*

*INVERT AT TOP BEND. CONNECT TO EXISTING PIPE AS PER CITY OF OTTAWA STD. S11.

CROSSING TABLE				
CROSSING No.	CONDUIT ELEV. AT CROSSING	CONDUIT ELEV. AT CROSSING	CLEARANCE	CITY OTTAWA STANDARD DETAIL
CR-01	WM, BOT. 63.30	EX. SAN, TOP. ±62.88	0.42m	-
CR-02	WM, BOT. 64.09	EX. STM, TOP. ±63.79	0.30m	W25.2
CR-03	EX. WM, BOT. ±62.75**	STM, TOP. 62.45	0.30m	-
CR-04	EX. HYDRO, BOT. ±64.96*	SAN, TOP. 63.81	1.15m	-
CR-05	EX. HYDRO, BOT. ±64.96*	WM, TOP. 63.50	1.46m	-
CR-06	EX. HYDRO, BOT. ±64.27*	STM, TOP. 62.52	1.75m	-

* HYDRO DUCT BANK HAS BEEN ESTIMATED TO BE 0.5m BELOW GROUND AND 0.542m THICK.
** THE TOP OF EXISTING WATERMAIN WAS ASSUMED TO BE 2.2m BELOW GRADE.
CROSSING ELEVATIONS ARE APPROXIMATE AND THE CONTRACTOR IS REQUIRED TO DETERMINE THE PRECISE LOCATION, DEPTH AND SIZE OF EXISTING UTILITIES PRIOR TO CONSTRUCTION AND REPORT ANY DISCREPANCIES/CONFLICTS TO THE ENGINEER BEFORE COMMENCING WORK.

6	FINAL ISSUE TO SITE PLAN CONTROL	2023-04-10
5	FINAL ISSUE TO SITE PLAN CONTROL	2022-12-09
4	FINAL ISSUE TO SITE PLAN CONTROL	2022-10-14
3	FINAL ISSUE TO SITE PLAN CONTROL	2022-08-24
2	RE-ISSUED TO SITE PLAN CONTROL	2022-04-29
1	ISSUED TO SITE PLAN CONTROL	2021-10-29

NOT FOR CONSTRUCTION

PROJECT

PROJECT ADDRESS

70 NICHOLAS ST.
OTTAWA, ON

TITLE

WATERMAIN DETAILS
AND SEWER TABLES

PROJECT NO.	DRAWN	CHECKED
477846	JN	SM

DRAWING NO. D0718624

REVISION NO.

SPA-C103

April 11, 2023 6:26:12 PM

H:\ISO\477846\1000\DWG\DWG\477846 - 21.dwg

ANDREW MCCREIGHT
MANAGER (A), DEVELOPMENT REVIEW CENTRAL
PLANNING, REAL ESTATE & ECONOMIC DEVELOPMENT
DEPARTMENT, CITY OF OTTAWA

APPROVED
By Andrew McCreight at 3:16 pm, May 23, 2023

D07-12-21-0197