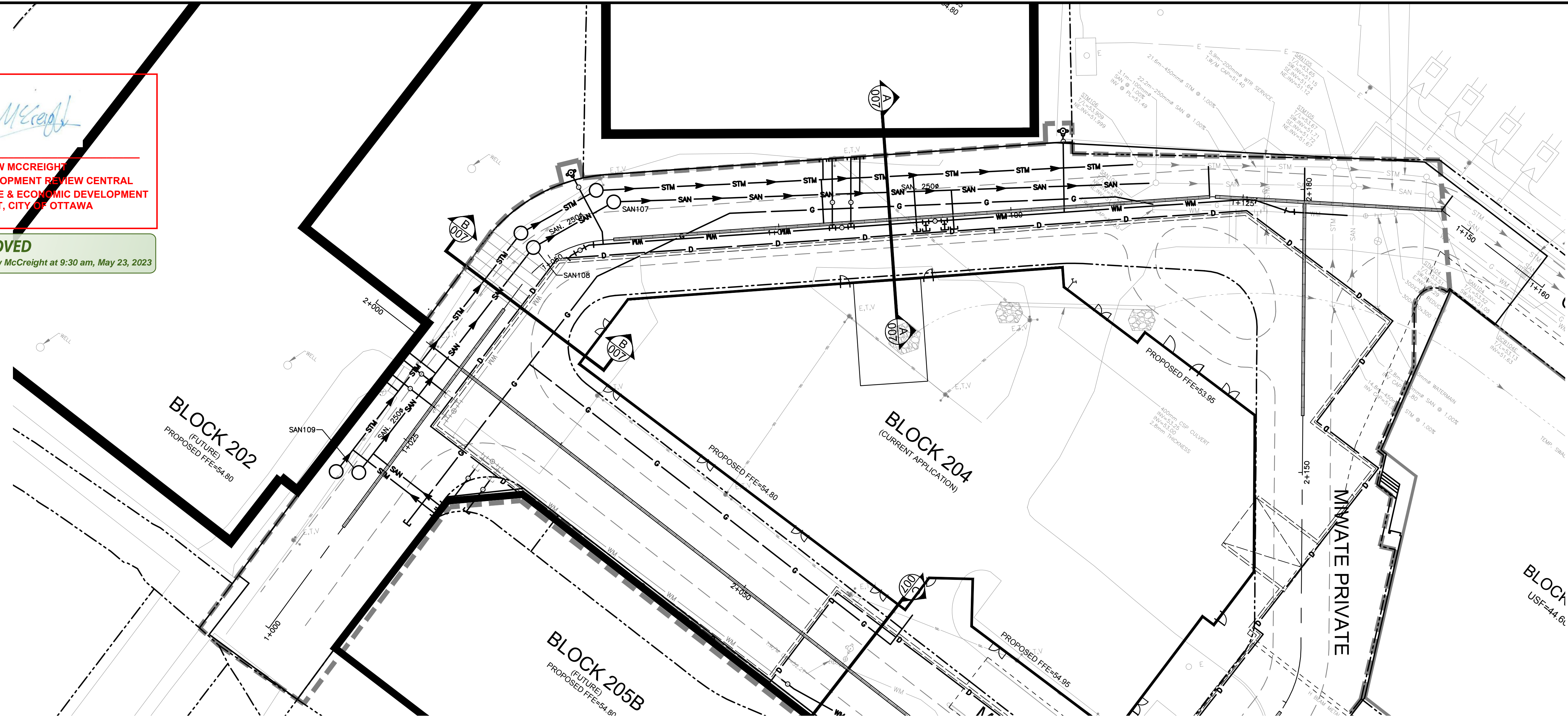


*Andrew McCreight*  
**ANDREW MCCREIGHT**  
 MANAGER (A), DEVELOPMENT REVIEW CENTRAL  
 PLANNING, REAL ESTATE & ECONOMIC DEVELOPMENT  
 DEPARTMENT, CITY OF OTTAWA

**APPROVED**  
 By Andrew McCreight at 9:30 am, May 23, 2023

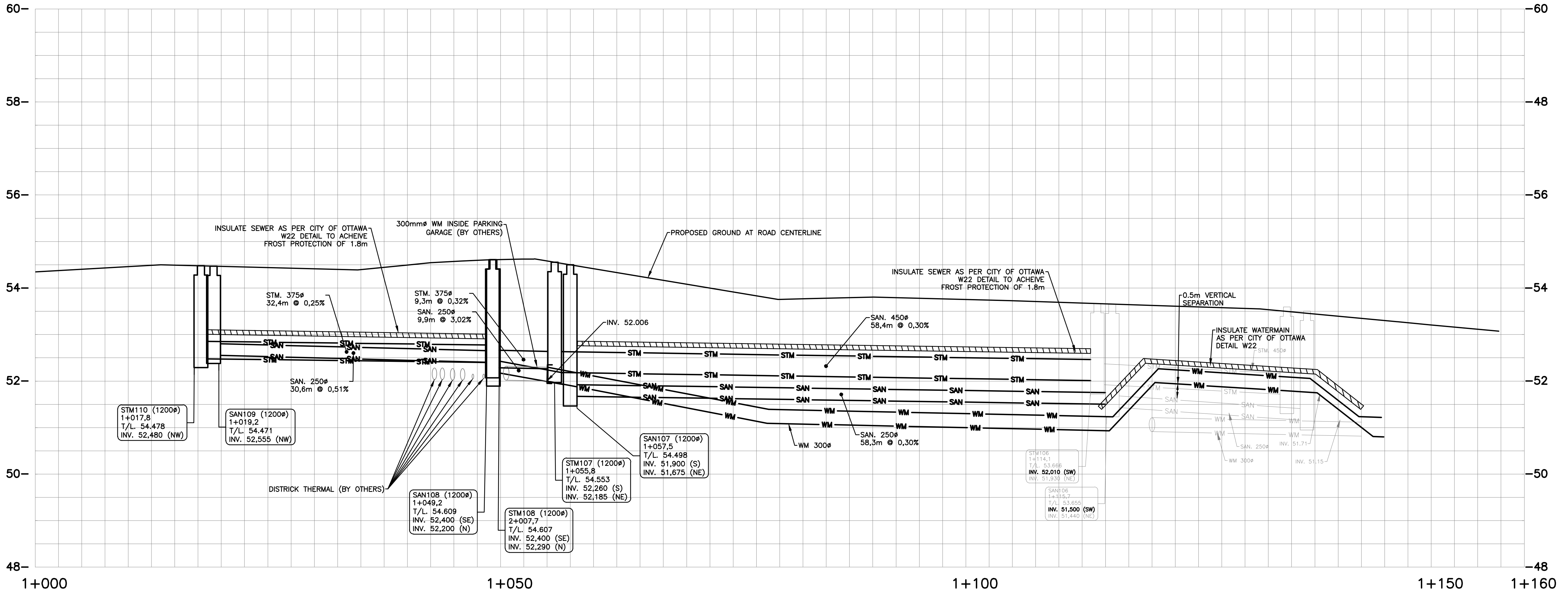


EXISTING		PROPOSED	
WM	WATERMAIN	WM	WATERMAIN
SAN	SANITARY SEWER	SAN	SANITARY SEWER
STM	STORM SEWER	STM	STORM SEWER
D	DRAIN	D	DRAIN
G	GAS LINE (APPROX. LOC.)	G	GAS LINE (APPROX. LOC.)
T	UNDERGROUND TELEPHONE (APPROX. LOC.)	T	UNDERGROUND TELEPHONE (APPROX. LOC.)
CA	UNDERGROUND TRAFFIC CABLE (APPROX. LOC.)	CA	UNDERGROUND TRAFFIC CABLE (APPROX. LOC.)
E	UNDERGROUND ELECTRICITY (APPROX. LOC.)	E	UNDERGROUND ELECTRICITY (APPROX. LOC.)
O	OVERHEAD WIRES	O	OVERHEAD WIRES
---	RIGHT-OF-WAY LIMITS	---	RIGHT-OF-WAY LIMITS
---	EASEMENT	---	EASEMENT
---	TOP OF SLOPE	---	TOP OF SLOPE
---	DITCH CENTER	---	DITCH CENTER
---	BOTTOM OF SLOPE	---	BOTTOM OF SLOPE
○	CATCHBASIN	○	CATCHBASIN
○	MANHOLE	○	MANHOLE
○	FIRE HYDRANT	○	FIRE HYDRANT
○	VALVE	○	VALVE
○	REDUCER	○	REDUCER
○	TEE	○	TEE
○	VALVE CHAMBER	○	VALVE CHAMBER
○	PRIVATE UTILITIES (WATERMAIN)	○	PRIVATE UTILITIES (WATERMAIN)
○	NATURAL GAS VALVE	○	NATURAL GAS VALVE
○	TRENCH DRAIN	○	TRENCH DRAIN
○	STOP SIGN	○	STOP SIGN
○	TRAFFIC LIGHT	○	TRAFFIC LIGHT
○	ELECTRICITY POLE	○	ELECTRICITY POLE
○	ELECT. TEL. STREET LIGHT POLE	○	ELECT. TEL. STREET LIGHT POLE
○	ELECT. TEL. TRANSFORMER POLE	○	ELECT. TEL. TRANSFORMER POLE
○	PRIVATE STREET LIGHT	○	PRIVATE STREET LIGHT
○	ELECTRICITY MANHOLE	○	ELECTRICITY MANHOLE
○	TELEPHONE MANHOLE	○	TELEPHONE MANHOLE
○	SURVEY STATION	○	SURVEY STATION
○	WATERMAIN INSULATION	○	WATERMAIN INSULATION
○	UNDERGROUND PARKING	○	UNDERGROUND PARKING
○	GARAGE OUTLINE	○	GARAGE OUTLINE
○	BORERHOLE (LOC. APPROX.)	○	BORERHOLE (LOC. APPROX.)

ABBREVIATIONS	
STM	→ STORM
SAN	→ SANITARY
WM	→ WATERMAIN
WTR	→ WATER
INV	→ INVERT
MH	→ MANHOLE
CB	→ CATCHBASIN
T/L	→ TOP OF LID
OBV	→ OBVERT
FFE	→ FINISHED FLOOR ELEVATION
BLDG	→ BUILDING
SERV	→ SERVICE

No.	Date	Description	By
4	FEB 03, 2023	ISSUED FOR ECA	A.C.
3	NOV 21, 2022	ISSUED FOR SITE PLAN APPLICATION	A.C.
2	AUG. 31, 2022	ISSUED FOR SITE PLAN APPLICATION	A.C.
1	APR. 18, 2022	ISSUED FOR SITE PLAN APPLICATION	A.C.



DESIGNED BY

APPROVED BY

**CIMA+**

CLIENT:  
**DREAM UNLIMITED**  
 30 ADELAIDE STREET EAST  
 SUITE 301  
 TORONTO, ON, M5C 3H1  
 613-219-2722

**ZIBI (Project Address)**  
 310 Mivate Private  
 OTTAWA, ONTARIO  
 K1R 0E1

PROJECT NAME:  
**ZIBI ONTARIO  
 BLOCK 204  
 315 PRIVE MIWATE PRIVATE,  
 CHAUDIERE ISLAND  
 OTTAWA, ONTARIO**

SHEET TITLE:  
**PLAN AND PROFILE  
 STA. 1+000 TO 1+145**

DISCIPLINE:  
**CIVIL**

DRAFTER: S.C. POGGIOLI	SCALE: H=1:250 V=1:50
DESIGNER: J. SAUVE	DATE: 2022/03/14
APPROVER: A. CHAUMONT	APPROVER: A. CHAUMONT
PROJECT No.: A000931	DRAWING No.: C006A

8 of 11