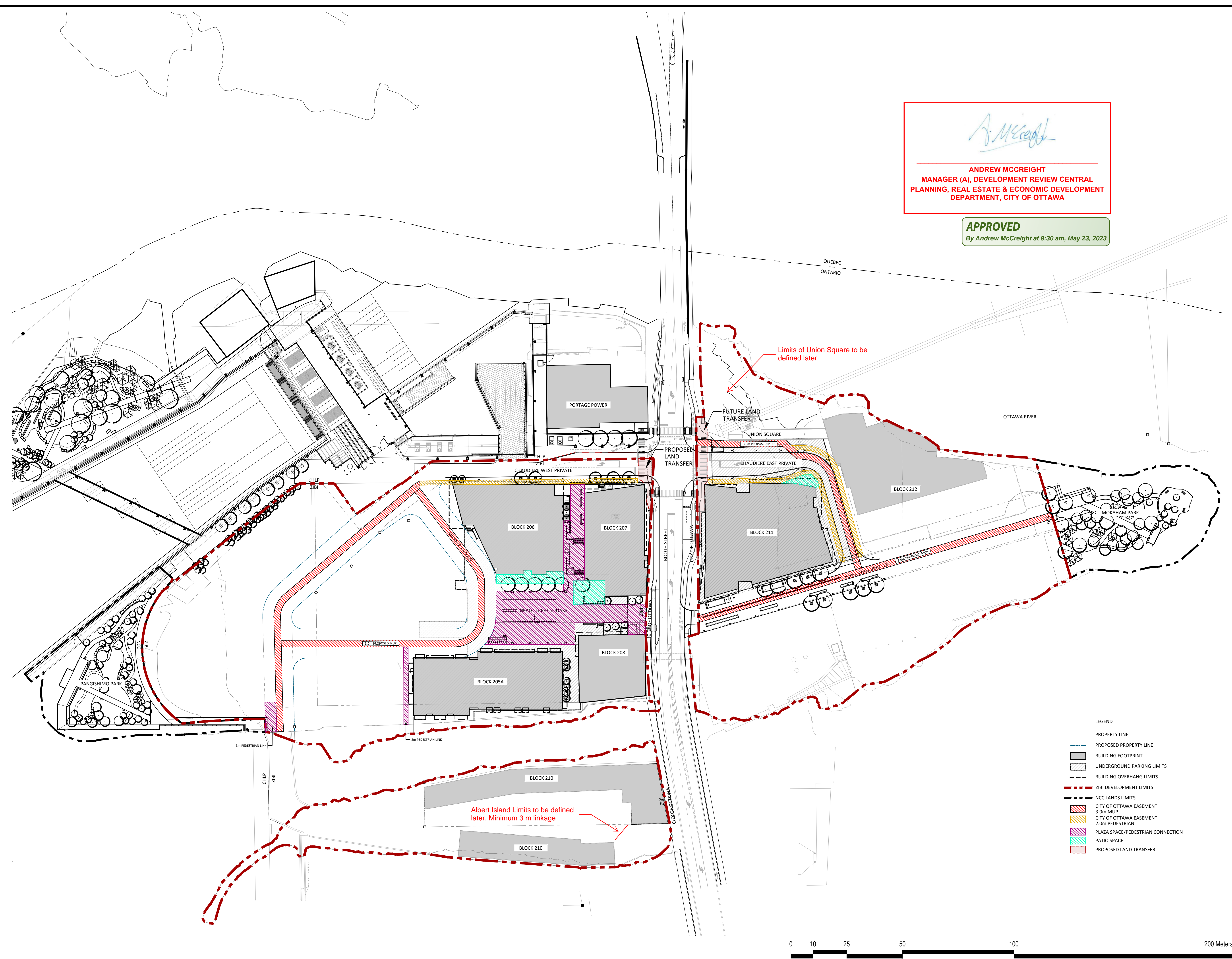


Andrew McCreight

ANDREW MCCREIGHT
 MANAGER (A), DEVELOPMENT REVIEW CENTRAL
 PLANNING, REAL ESTATE & ECONOMIC DEVELOPMENT
 DEPARTMENT, CITY OF OTTAWA

APPROVED
 By Andrew McCreight at 9:30 am, May 23, 2023



- LEGEND**
- PROPERTY LINE
 - PROPOSED PROPERTY LINE
 - ▭ BUILDING FOOTPRINT
 - ▭ UNDERGROUND PARKING LIMITS
 - ▭ BUILDING OVERHANG LIMITS
 - ZIBI DEVELOPMENT LIMITS
 - NCC LANDS LIMITS
 - ▭ CITY OF OTTAWA EASEMENT 3.0m MUP
 - ▭ CITY OF OTTAWA EASEMENT 2.0m PEDESTRIAN
 - ▭ PLAZA SPACE/PEDESTRIAN CONNECTION
 - ▭ PATIO SPACE
 - PROPOSED LAND TRANSFER



| No. | Revision | Date |
|-----|-------------------|-------------|
| 3 | ISSUED FOR REVIEW | 21 APR 2023 |
| 2 | ISSUED FOR REVIEW | 23 AUG 2022 |
| 1 | ISSUED FOR REVIEW | 11 MAR 2022 |

North: Stamp:

CSW Landscape Architecture
 Urban Design
 Site Planning
 Recreation and Park Planning
 Project Management

319 McRae Avenue, Suite 502, Ottawa, Ontario, K1Z 0B9
 Tel: (613) 729-4536

1. All measurements in millimeters unless specified otherwise. Do not scale drawing. All drawings to be read in conjunction with written specifications.
2. Copyright reserved. This drawing is the exclusive property of CSW Landscape Architects Ltd. and shall not be used without the consent thereof.
3. This Drawing may not be used for construction until signed by the landscape architect. It is the responsibility of the contractor to:
 - check and verify all dimensions on site;
 - report all errors and/or omissions to the landscape architect;
 - comply with all pertinent codes and by-laws;
 - check and verify locations of all underground services with all local utilities prior to any digging.

Project: **Zibi Ontario**

OTTAWA, ONTARIO

**Drawing: LEGAL PLAN
 CITY OF OTTAWA EASEMENTS**

| | |
|-------------------------|--------------------|
| Scale: 1:750 | Date: MAR 2022 |
| Design By: SC/LM/SW | Drawn By: SW |
| Project Number: 1981-20 | Sheet Number: L1.0 |