

GENERAL NOTES
 1. These architectural documents are the exclusive property of HDR Architecture Associates and NEUF architects and cannot be used, copied or reproduced without written pre-authorization.
 2. All dimensions which appear on the documents must be verified by the contractor before to start the work.
 3. The architect must be notified of all errors, omissions and discrepancies between these documents and those of the others professionals.
 4. The dimensions on these documents must be read and not measured.

Structural Engineer
RJC Engineers
 1540 Carling Avenue Suite 304
 Ottawa, ON, K1Z 6P9

Electrical & Mechanical Engineer
Smith + Andersen
 1600 Carling Avenue, Suite 530
 Ottawa, ON, K1Z 1G3

Planning
Folenn Planning + Design
 388 Cooper Street, Suite 300
 Ottawa, ON, K2P 2H7

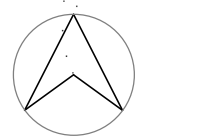
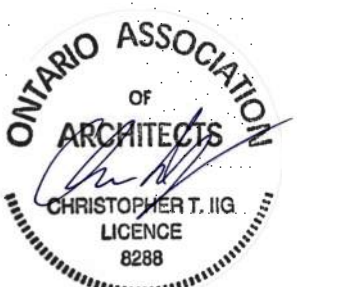
Landscape Architect
CSW
 319 McRae Avenue, Suite 502
 Ottawa, ON, K1Z 6S9

Civil
CIMA
 240 Catherine Street, Unit 110
 Ottawa, ON, K2P 2G8

Architect
NEUF architect(e)s CANADA INC.
 47 Clarence St. Suite 406, Ottawa, ON K1N 9K1



SEAL:



PROJECT NORTH

Client
DREAM UNLIMITED
 30 Adelaide Street East
 Suite 301
 Toronto, ON, M5C 3H1
 T: (416) 365-3535

ZIBI
 6 Booth Street (Albert Island)
 Ottawa, ON, M1R 6K8

Project
ZIBI - BLOCK 204

Location PROJECT No.
315 Miwate Private 12791
Ottawa, ON

NO	REVISION	DATE (yy-mm-dd)
A	ISSUED FOR SITE PLAN CONTROL APPLICATION	2022-04-21
B	ISSUED FOR SITE PLAN CONTROL APPLICATION RE-SUBMISSION	2022-09-15
C	ISSUED FOR SITE PLAN CONTROL APPLICATION RE-SUBMISSION	2022-12-02
D	ISSUED FOR SITE PLAN CONTROL RE-SUBMISSION	2023-02-17

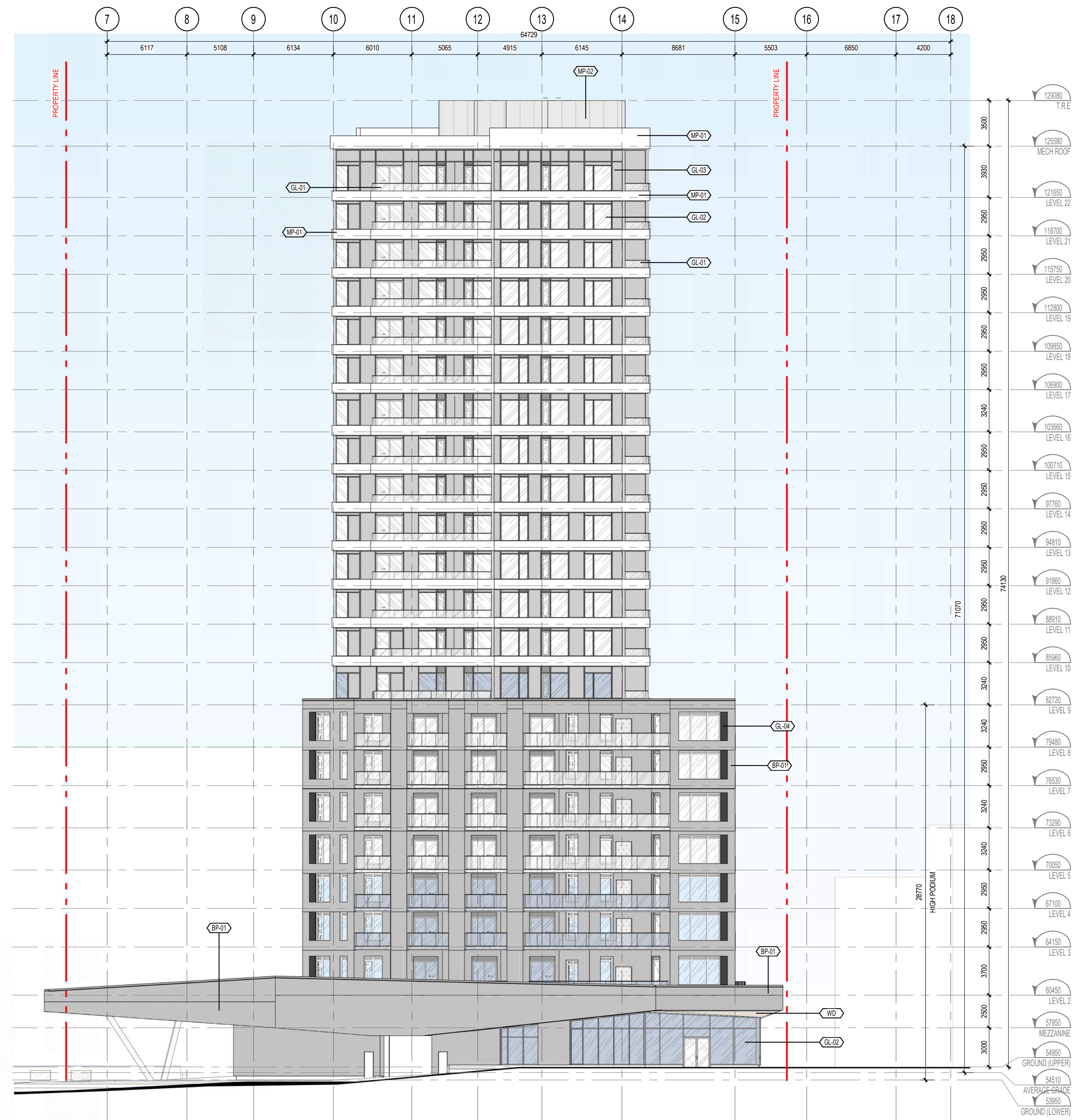
Preliminary
 DO NOT USE FOR
 CONSTRUCTION

Drawn by
 AC / EW
 DATE (yy-mm-dd)
 09/01/22
 Drawing Title

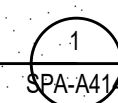
Checked by
 CI / LK
 Scale
 As indicated

ELEVATION - WEST

Revision Drawing Number
D SPA-A414
 #18749



ELEVATION - WEST SPA
 1:200



1
 SPA-A414

Andrew McCreight
ANDREW MCCREIGHT
 MANAGER (A), DEVELOPMENT REVIEW CENTRAL
 PLANNING, REAL ESTATE & ECONOMIC DEVELOPMENT
 DEPARTMENT, CITY OF OTTAWA

APPROVED
 By Andrew McCreight at 9:30 am, May 23, 2023

MATERIAL LEGEND

	GL-01	CLEAR GLAZING
	GL-02	CLEAR GLAZING WITH BIRD FRIENDLY TREATMENT
	GL-03	STATE - SPANDREL PANEL
	GL-04	DARK SPANDREL GLAZING
	GL-06	FROSTED GLASS PANEL
	MP-01	WHITE METAL PANEL
	MP-02	GREY METAL PANEL
	BP-01	DARK GREY BRICK CLADDING
	WD	WOOD EFFECT CLADDING