

**TOPOGRAPHIC PLAN OF SURVEY OF
PART OF THE ROAD ALLOWANCE
BETWEEN LOTS 15 AND 16
AND PART OF LOT 16
CONCESSION 2 (RIDEAU FRONT)
GEOGRAPHIC TOWNSHIP OF NEPEAN
CITY OF OTTAWA**
Surveyed by Annis, O'Sullivan, Vollebek Ltd.

Scale 1 : 250
DISTANCES SHOWN ON THIS PLAN ARE IN METRES AND
CAN BE CONVERTED TO FEET BY DIVIDING BY 0.3048

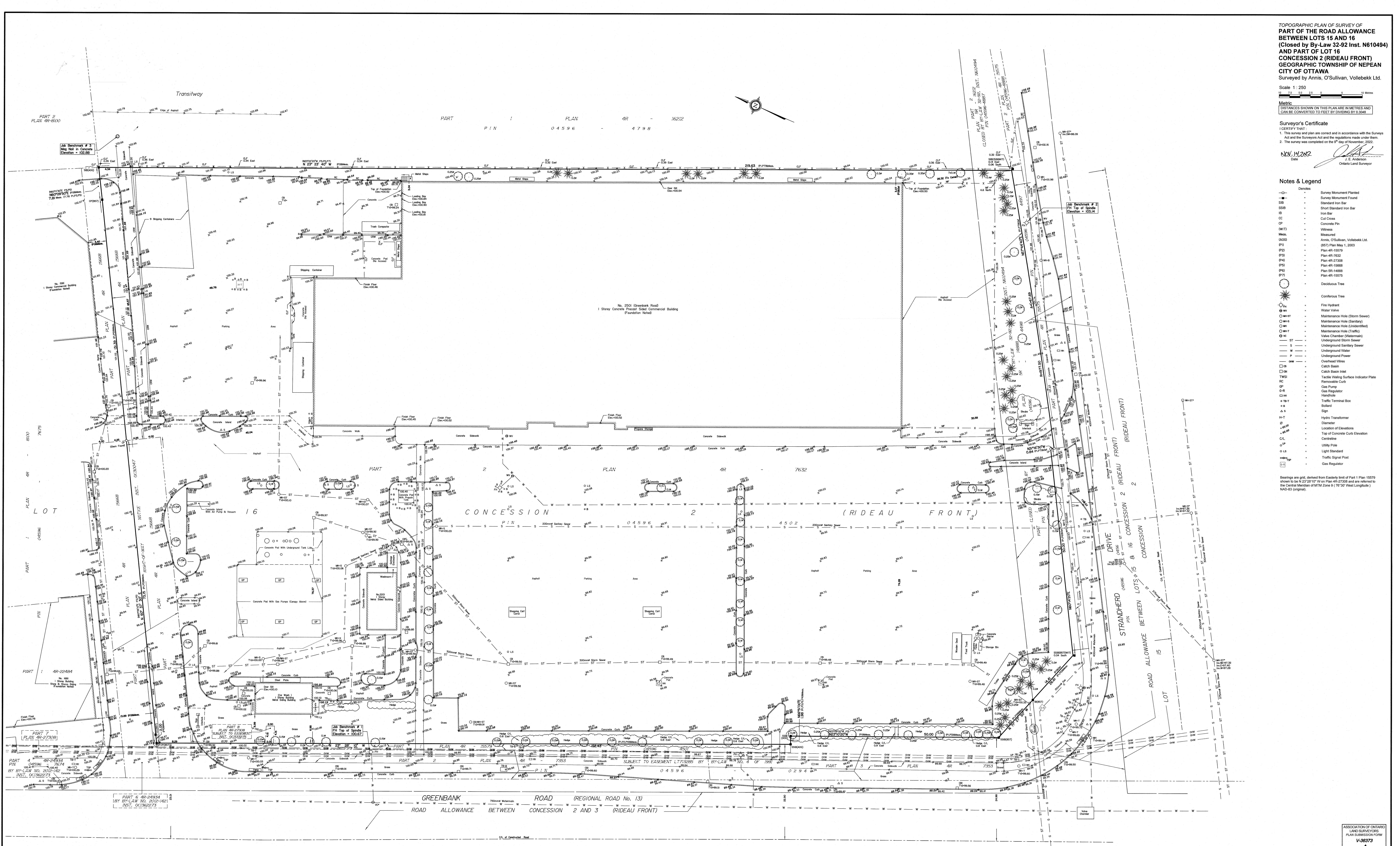
Surveyor's Certificate
I CERTIFY THAT:
1. This survey and plan are correct and in accordance with the Survey Act and the Surveyors Act and the regulations made under them.
2. The survey was completed on the 17th day of November, 2022.

NOV 17 2022
Date
A. E. Anderson
Ontario Land Surveyor

Notes & Legend

—○—	Survey Monument Planted
—●—	Survey Monument Found
SB	Standard Iron Bar
SB8	Short Standard Iron Bar
IB	Iron Bar
CC	Cut Cross
CP	Concrete Pin
WHT	Witness
Meas.	Measured
(A00)	Annis, O'Sullivan, Vollebek Ltd.
(857)	(857) Plan May 1, 2003
(P1)	Plan 48-10579
(P2)	Plan 48-7632
(P3)	Plan 48-27308
(P4)	Plan 48-10568
(P5)	Plan 58-14888
(P7)	Plan 48-15575
○	Deciduous Tree
★	Coniferous Tree
⊕	Fire Hydrant
⊖	Water Valve
⊕-BT	Maintenance Hole (Storm Sewer)
⊕-S	Maintenance Hole (Sanitary)
⊕-T	Maintenance Hole (Traffic)
⊕-V	Valve Chamber (Watermain)
⊕-U	Underground Storm Sewer
⊕-S	Underground Sanitary Sewer
⊕-W	Underground Water
⊕-P	Underground Power
⊕-M	Overhead Mains
⊕	Catch Basin
⊕-I	Catch Basin Inlet
⊕-TWS	Tactile Warning Surface Indicator Plate
RC	Removable Curb
GP	Gas Pump
GR	Gas Regulator
CH	Handhole
⊕-T	Traffic Terminal Box
⊕-B	Busstop
⊕-S	Sign
⊕-H	Hydro Transformer
⊕	Diameter
⊕-E	Location of Elevations
⊕-C	Top of Concrete Curb Elevation
⊕-L	Centreline
⊕-U	Utility Pole
⊕-L	Light Standard
⊕-T	Traffic Signal Post
⊕-R	Gas Regulator

Bearings are grid, derived from Eastern limit of Part 1 Plan 15579 (shown to be N 22° 22' 10" W on Plan 48-27308 and are referred to the Central Meridian of MTM Zone 8 (79° 30' West Longitude) NAD-83 (original).



UTILITY NOTES

- This drawing cannot be accepted as acknowledging all of the utilities and it will be the responsibility of the user to contact the respective utility authorities for confirmation.
- Only visible surface utilities were located.
- Underground utility data derived from City of Ottawa utility sheet reference Z-A-09 (Revised October, 2022) and Z-A-03 (Revised October, 2022).
- Sanitary and storm sewer grades and inverts were derived from City of Ottawa Utility Sheets Z-A-09 (Revised October 2022), 3056-101 (revised May 1992) and Project No. 024, Drawing No. 7 (revised July 23, 2007).
- A field location of underground plant by the pertinent utility authority is mandatory before any work involving breaking ground, probing, excavating, etc.

ELEVATION NOTES

- Elevations shown are geoidic and are referred to the CGVD28 geoidic datum, derived from control monument No. 01988071 having an elevation of 99.742 metres.
- It is the responsibility of the user of this information to verify that the job benchmark has not been altered or disturbed and that its relative elevation and description agree with the information shown on this drawing.

ASSOCIATION OF ONTARIO
LAND SURVEYORS
PLAN SUBMISSION FORM
V-36373

THIS PLAN IS UNREGISTERED UNLESS IT IS REGISTERED IN ACCORDANCE WITH THE REGULATION MADE UNDER THE SURVEYORS ACT, R.S.O. 1990, SECTION 29 (3).

ANNIS, O'SULLIVAN, VOLLEBEK LTD.
44 Colborne Ave., Suite 500
Ottawa, ON K1P 1G5
Phone: (613) 737-8807 Fax: (613) 721-1019
www.aosls.com