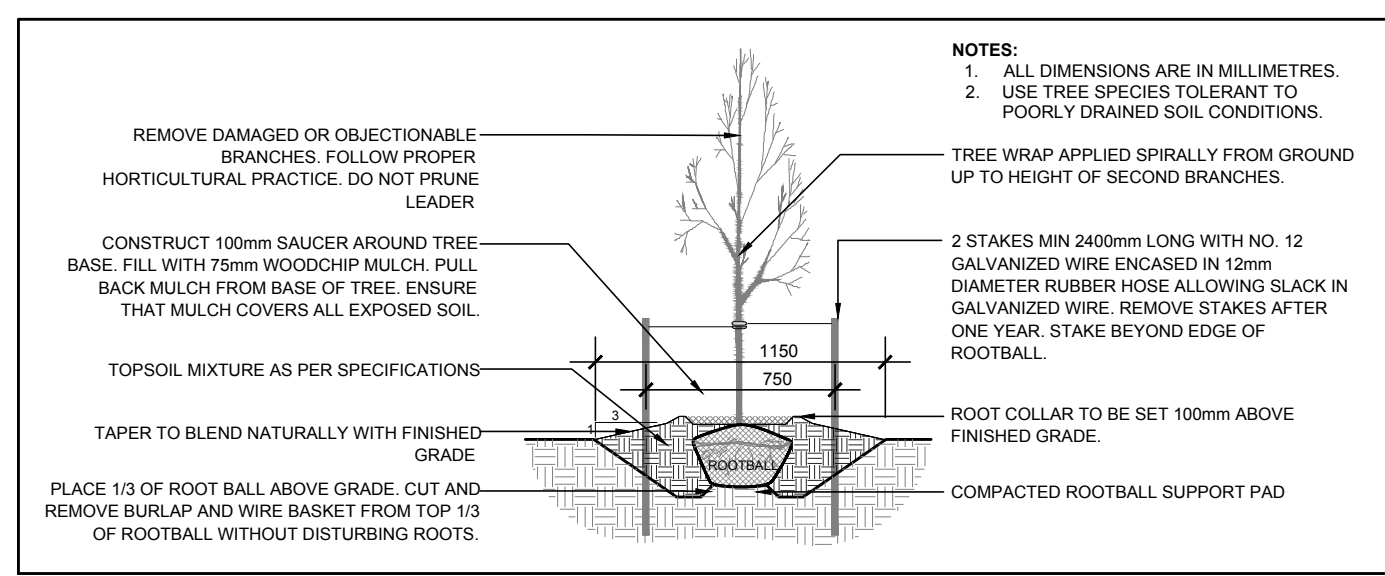


1 TREE CONSERVATION REPORT & LANDSCAPE PLAN- NEW BUILDING
SCALE: 1:200



2 DECIDUOUS TREE PLANTING
SCALE: NTS

- GENERAL NOTES:**
- IT IS THE RESPONSIBILITY OF THE APPROPRIATE CONTRACTOR OR OFFICIAL TO REPORT ANY ERRORS, OMISSIONS OR DISCREPANCIES ON THIS PLAN WITH ACTUAL SITE CONDITIONS TO THE LANDSCAPE ARCHITECT BEFORE PROCEEDING WITH CONSTRUCTION.
 - THE CONTRACTOR IS TO NOTIFY ALL UTILITY COMPANIES AND AUTHORITIES PRIOR TO ANY EXCAVATION AND ASCERTAIN LOCATIONS OF UNDERGROUND SERVICES.
 - THE CONTRACTOR IS TO REINSTATE ALL AREAS AND ITEMS DAMAGED AS A RESULT OF CONSTRUCTION ACTIVITY.
 - THE CONTRACTOR IS TO COMPLY WITH ALL PERTINENT CODES AND BY-LAWS.
 - THE CONTRACTOR IS TO MAINTAIN A POSITIVE SURFACE RUN-OFF THROUGHOUT THE ENTIRE CONSTRUCTION PERIOD.
 - THE LANDSCAPE ARCHITECT IS NOT RESPONSIBLE FOR SUBSURFACE CONDITIONS.
 - THE CONTRACTOR IS TO IDENTIFY ALL EXISTING TREES TO REMAIN ON SITE WITH THE LANDSCAPE ARCHITECT PRIOR TO CONSTRUCTION.
 - THE CONTRACTOR IS TO STAKE THE PROPOSED LOCATION OF ALL PLANT MATERIAL, IN CONJUNCTION WITH THE LANDSCAPE ARCHITECT PRIOR TO EXCAVATION.
 - MINIMUM DISTANCES FOR SELECTED DECIDUOUS TREES ARE AS FOLLOWS:
 - BUILDING FOUNDATIONS - 7.5M
 - SIDEWALKS - 1.5M
 - PUBLIC STREETS - 2.5M
 - UNDERGROUND INFRASTRUCTURE - 2.0M
 - ALL TREES WITHIN 1M OF UNDERGROUND UTILITY TRENCHES ARE TO BE EXCAVATED BY HAND.
 - REMOVE ALL PROTECTIVE WRAPPING FROM TREE TRUNKS AFTER INSTALLATION.
 - STAKING OF TREES SHALL ONLY BE PERFORMED IF NECESSARY.
 - ENSURE THAT MULCH IS PULLED BACK A MINIMUM DISTANCE OF 75MM FROM BASE OF TREE TRUNK.

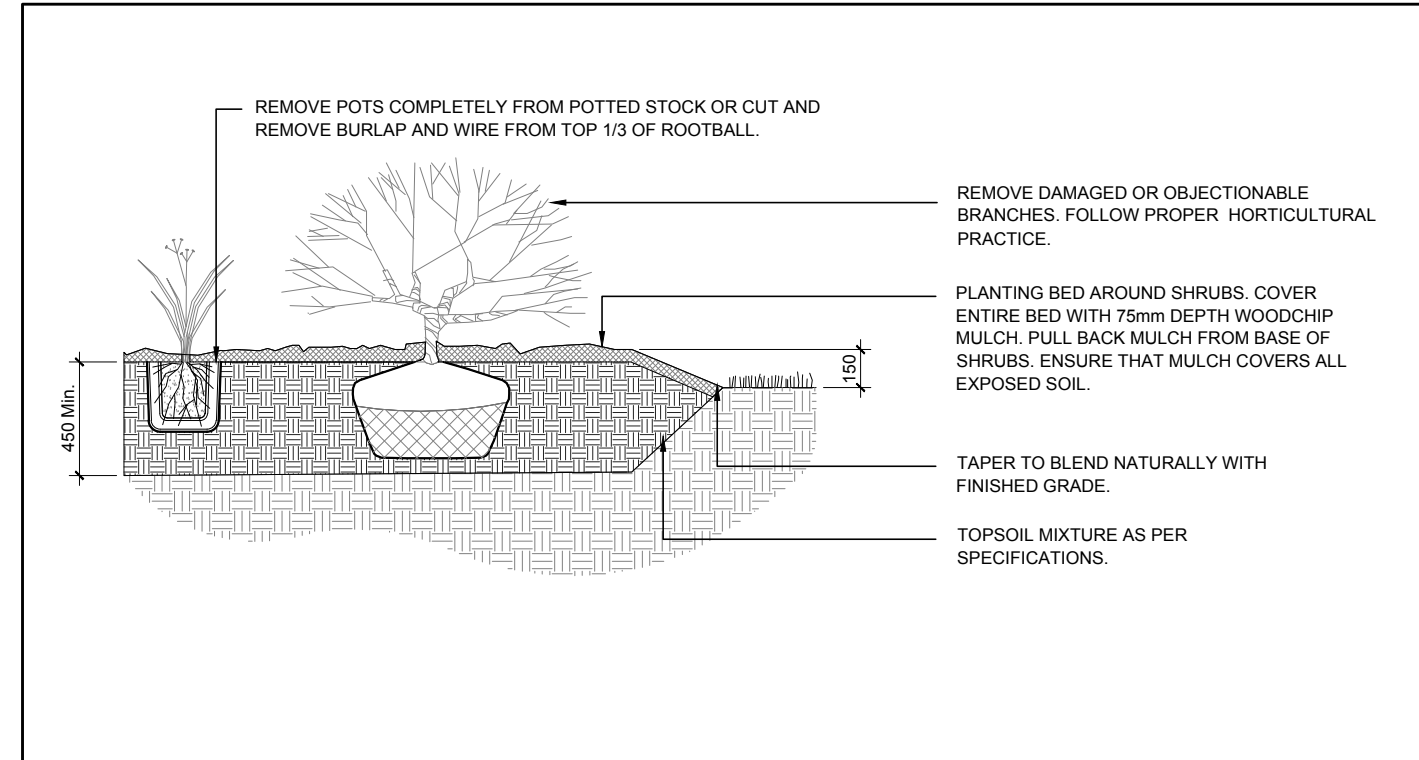
EXISTING TREE LIST

KEY	QTY	BOTANICAL NAME	COMMON NAME	SIZE	CONDITION	CRITICAL ROOT ZONE	ACTION	OWNERSHIP
AN	8	<i>Acer negundo</i>	Manitoba Maple	220-360mm DBH	GOOD	2200-3600mm	To remain	1 Finch Private
AS	2	<i>Acer saccharum</i>	Sugar Maple	250mm DBH	GOOD	2500mm	To remain	156 Twyford Street
MA	1	<i>Malus spp.</i>	Crabapple	200mm DBH	GOOD	2000mm	To be removed	1 Finch Private
PD	3	<i>Populus deltoides</i>	Eastern Cottonwood	100-670mm DBH	GOOD	1000-6700mm	To be removed	1 Finch Private
TA	10	<i>Tilia americana</i>	Basswood	200-510mm DBH	GOOD	2000-5100mm	See plan	1 Finch Private
TO	*	<i>Thuja occidentalis</i>	White Cedar	100mm DBH	GOOD	1000mm	To remain	1 Finch Private
UA	7	<i>Ulmus americana</i>	American Elm	150-250mm DBH	GOOD	1500-2500mm	To be removed	1 Finch Private
WC	*	<i>Thuja occidentalis</i>	White Cedar	150-200mm DBH	GOOD	1500-2000mm	To remain	3415 Uplands

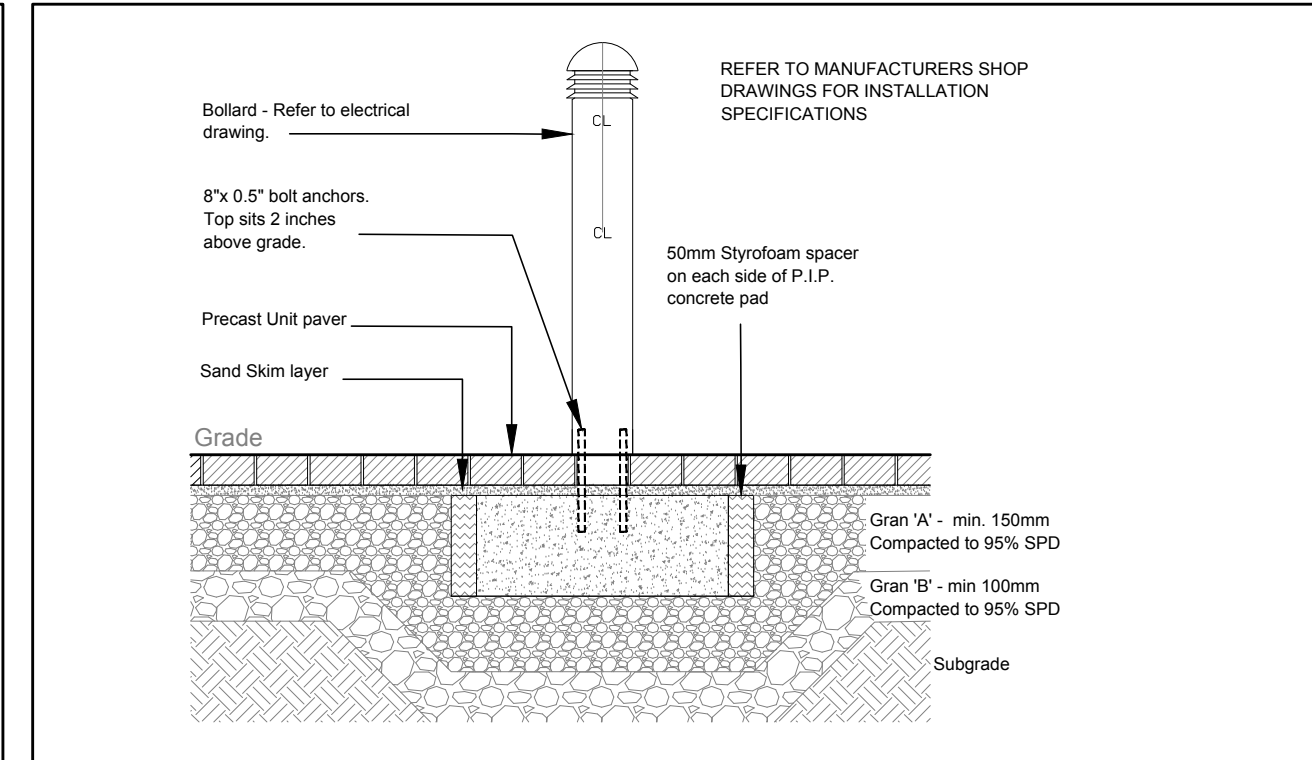
*DENOTES NUMEROUS

PROPOSED PLANT LIST

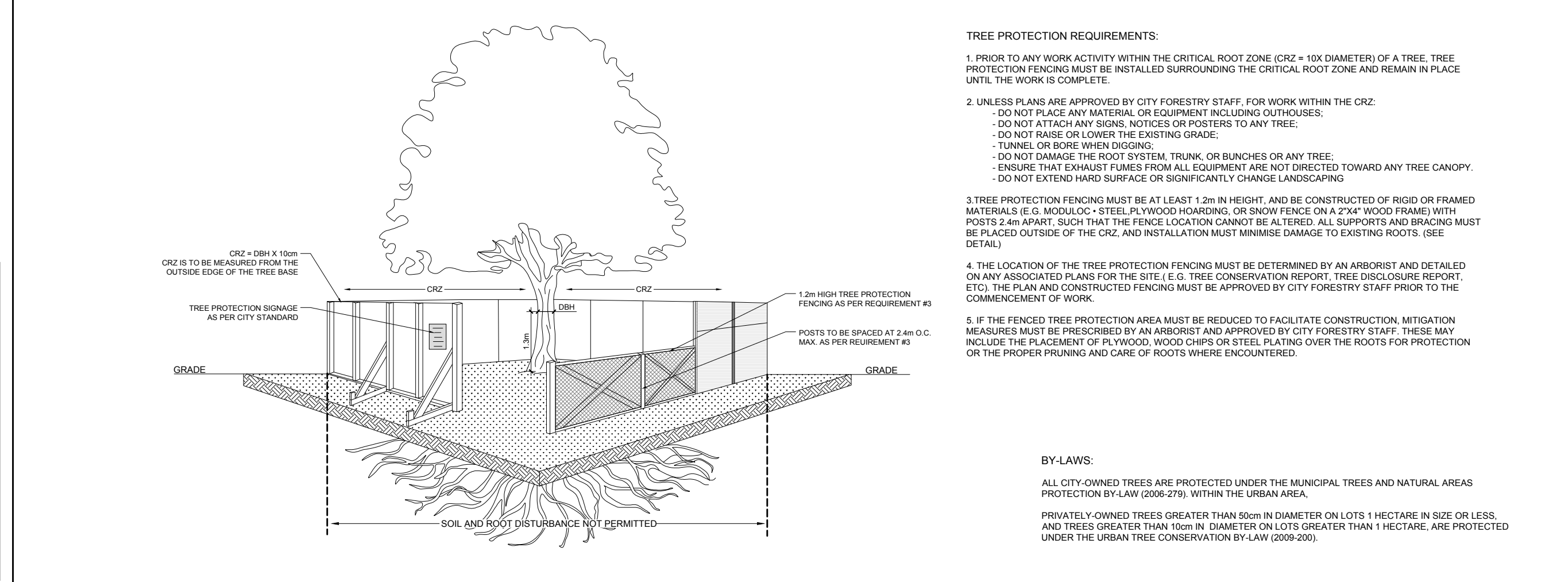
KEY	QTY	BOTANICAL NAME	COMMON NAME	SIZE	CONDITION	REMARKS
HL	1	<i>Gleditsia triacanthos var. inermis</i> Draves	Street Keeper Honey Locust	60mm cal.	B&B	
MP	6	<i>Pinus mugo 'Pumilio'</i>	Dwarf Mugo Pine	2gal pot	Potted	Space 800mm o.c.
BL	4	<i>Leymus arenarius 'Blue Lyme'</i>	Blue Lyme Grass	250mm pot	Potted	Space 800mm o.c.
KF	20	<i>Calamagrostis x acutiflora 'Karl Foerster'</i>	Karl Foerster Grass	250mm pot	Potted	Space 800mm o.c.
OD	7	<i>Calamagrostis x acutiflora 'Overdam'</i>	Overdam Grass	250mm pot	Potted	Space 800mm o.c.
PO	19	<i>Miscanthus sinensis 'Strictus'</i>	Porcupine Grass	250mm pot	Potted	Space 800mm o.c.



3 SHRUB / ORNAMENTAL GRASS PLANTING
SCALE: NTS



4 BOLLARD LIGHT
SCALE: NTS



5 TREE PROTECTION FENCE
SCALE: NTS

CLIENT

OTTAWA COMMUNITY HOUSING

CONSULTANTS

ARCHITECTS: **CSV ARCHITECTS**
sustainable design - conception écologique
413.566.8118 190 O'Connor Street, Suite 100
Ottawa, Ontario K2P 0P3

CIVIL ENGINEERS: **McINTOSH PERRY**

SURVEYORS: **McINTOSH PERRY SURVEYING INC.**
3246 Drummond Court, SA, R.R. #7, Perth, ON K2H 3G3
Tel: 613-267-6524 Fax: 613-267-7992
www.mcintoshperry.com

LEGEND

- PROPOSED SOD
- PROPOSED CONCRETE SIDEWALK
- PROPOSED TYPE 1 CONCRETE PAVERS
- PROPOSED TYPE 2 CONCRETE PAVERS
- EXISTING TREE TO REMAIN
- EXISTING CEDAR HEDGE TO REMAIN
- EXISTING TREE TO BE REMOVED
- PROPOSED DECIDUOUS TREE
- PROPOSED SHRUBS / ORNAMENTAL GRASSES
- TREE PROTECTION FENCE
- PROPOSED BOLLARD LIGHT
- PROPOSED BIKE PARKING SPACE
- PROPOSED BENCH
- PROPOSED TABLE & CHAIRS

1	ISSUED FOR SITE PLAN CONTROL	05/12/2023	ML	JL
No.	Issue	Date	DR	CK

JAMES B. LENNOX & ASSOCIATES INC.
LANDSCAPE ARCHITECTS
3332 CARLING AVE. OTTAWA, ONTARIO K2H 5A8
Tel: (613) 722-5168 Fax: (866) 343-3942

PROJECT

SHEARWATER COURT NEW BUILDING
1 FINCH PRIVATE, OTTAWA ON

DRAWING

TREE CONSERVATION REPORT & LANDSCAPE PLAN- NEW BUILDING

STAMP

SCALE

AS SHOWN

START DATE

DECEMBER, 2022

PROJECT NO.

23CSV2318

PROJECT NORTH

DRAWING NO.

L.1

PLOT SIZE ARCH-D

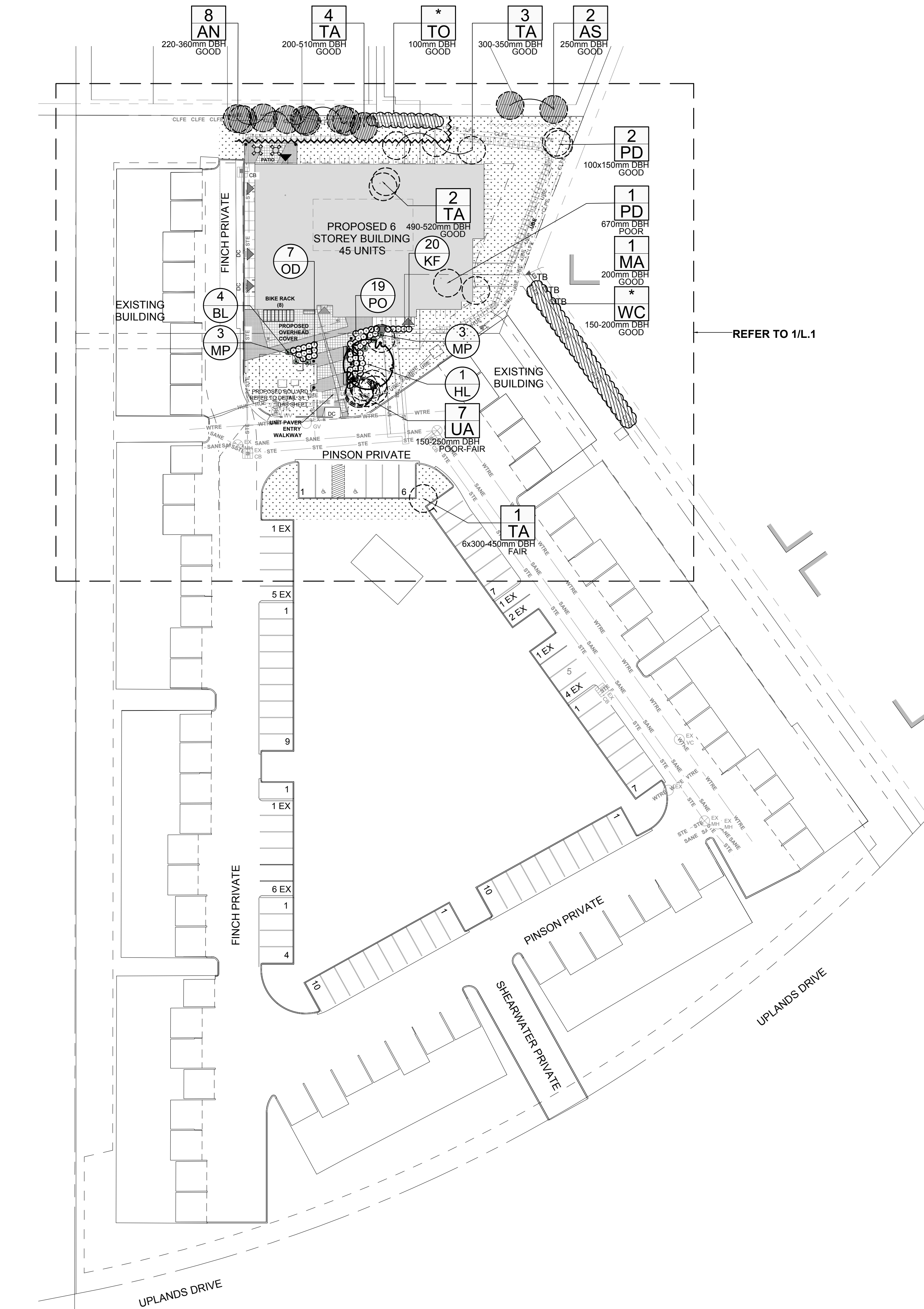
TREE PROTECTION REQUIREMENTS:

- PRIOR TO ANY WORK ACTIVITY WITHIN THE CRITICAL ROOT ZONE (CRZ = 10X DIAMETER) OF A TREE, TREE PROTECTION FENCING MUST BE INSTALLED SURROUNDING THE CRITICAL ROOT ZONE AND REMAIN IN PLACE UNTIL THE WORK IS COMPLETE.
- UNLESS PLANS ARE APPROVED BY CITY FORESTRY STAFF, FOR WORK WITHIN THE CRZ:
 - DO NOT PLACE ANY MATERIAL OR EQUIPMENT INCLUDING OUTHOUSES;
 - DO NOT ATTACH ANY SIGNS, NOTICES OR POSTERS TO ANY TREE;
 - DO NOT RAISE OR LOWER THE EXISTING GRADE;
 - TUNNEL OR BORE WHEN DIGGING;
 - DO NOT DAMAGE THE ROOT SYSTEM, TRUNK, OR BRANCHES OF ANY TREE;
 - ENSURE THAT EXHAUST FLAMES FROM ALL EQUIPMENT ARE NOT DIRECTED TOWARD ANY TREE CANOPY;
 - DO NOT EXTEND HARD SURFACE OR SIGNIFICANTLY CHANGE LANDSCAPING.
- TREE PROTECTION FENCING MUST BE AT LEAST 1.2m IN HEIGHT, AND BE CONSTRUCTED OF RIGID OR FRAMED MATERIALS (E.G. METALIC, STEEL, PL WOOD, HOARDING, OR SNOW FENCE ON A 2"x4" WOOD FRAME) WITH POSTS 2.4m APART, SUCH THAT THE FENCE LOCATION CANNOT BE ALTERED. ALL SUPPORTS AND BRACINGS MUST BE PLACED OUTSIDE OF THE CRZ, AND INSTALLATION MUST MINIMIZE DAMAGE TO EXISTING ROOTS. (SEE DETAIL)
- IF THE FENCED TREE PROTECTION AREA MUST BE REDUCED TO FACILITATE CONSTRUCTION, MITIGATION MEASURES MUST BE PRESCRIBED BY AN ARBORIST AND APPROVED BY CITY FORESTRY STAFF. THESE MAY INCLUDE THE PLACEMENT OF PLYWOOD, WOOD CHIPS OR STEEL PLATING OVER THE ROOTS FOR PROTECTION OR THE PROPER PRUNING AND CARE OF ROOTS WHERE ENCOUNTERED.

BY-LAWS:

ALL CITY-OWNED TREES ARE PROTECTED UNDER THE MUNICIPAL TREES AND NATURAL AREAS PROTECTION BY-LAW (2006-279), WITHIN THE URBAN AREA.

PRIVATELY OWNED TREES GREATER THAN 500m IN DIAMETER ON LOTS 1 HECTARE IN SIZE OR LESS, AND TREES GREATER THAN 100m IN DIAMETER ON LOTS GREATER THAN 1 HECTARE, ARE PROTECTED UNDER THE URBAN TREE CONSERVATION BY-LAW (2009-200).



1 TREE CONSERVATION REPORT & LANDSCAPE PLAN- FULL SITE
SCALE: 1:400

- GENERAL NOTES:**
- IT IS THE RESPONSIBILITY OF THE APPROPRIATE CONTRACTOR OR OFFICIAL TO REPORT ANY ERRORS, OMISSIONS OR DISCREPANCIES ON THIS PLAN WITH ACTUAL SITE CONDITIONS TO THE LANDSCAPE ARCHITECT BEFORE PROCEEDING WITH CONSTRUCTION.
 - THE CONTRACTOR IS TO NOTIFY ALL UTILITY COMPANIES AND AUTHORITIES PRIOR TO ANY EXCAVATION AND ASCERTAIN LOCATIONS OF UNDERGROUND SERVICES.
 - THE CONTRACTOR IS TO REINSTATE ALL AREAS AND ITEMS DAMAGED AS A RESULT OF CONSTRUCTION ACTIVITY.
 - THE CONTRACTOR IS TO COMPLY WITH ALL PERTINENT CODES AND BY-LAWS.
 - THE CONTRACTOR IS TO MAINTAIN A POSITIVE SURFACE RUN-OFF THROUGHOUT THE ENTIRE CONSTRUCTION PERIOD.
 - THE LANDSCAPE ARCHITECT IS NOT RESPONSIBLE FOR SUBSURFACE CONDITIONS.
 - THE CONTRACTOR IS TO IDENTIFY ALL EXISTING TREES TO REMAIN ON SITE WITH THE LANDSCAPE ARCHITECT PRIOR TO CONSTRUCTION.
 - THE CONTRACTOR IS TO STAKE THE PROPOSED LOCATION OF ALL PLANT MATERIAL IN CONJUNCTION WITH THE LANDSCAPE ARCHITECT PRIOR TO EXCAVATION.
 - MINIMUM DISTANCES FOR SELECTED DECIDUOUS TREES ARE AS FOLLOWS:
 - BUILDING FOUNDATIONS - 7.5M
 - SIDEWALKS - 1.5M
 - PUBLIC STREETS - 2.5M
 - UNDERGROUND INFRASTRUCTURE - 2.0M
 - ALL TREES WITHIN 1M OF UNDERGROUND UTILITY TRENCHES ARE TO BE EXCAVATED BY HAND.
 - REMOVE ALL PROTECTIVE WRAPPING FROM TREE TRUNKS AFTER INSTALLATION.
 - STAKING OF TREES SHALL ONLY BE PERFORMED IF NECESSARY.
 - ENSURE THAT MULCH IS PULLED BACK A MINIMUM DISTANCE OF 75MM FROM BASE OF TREE TRUNK.

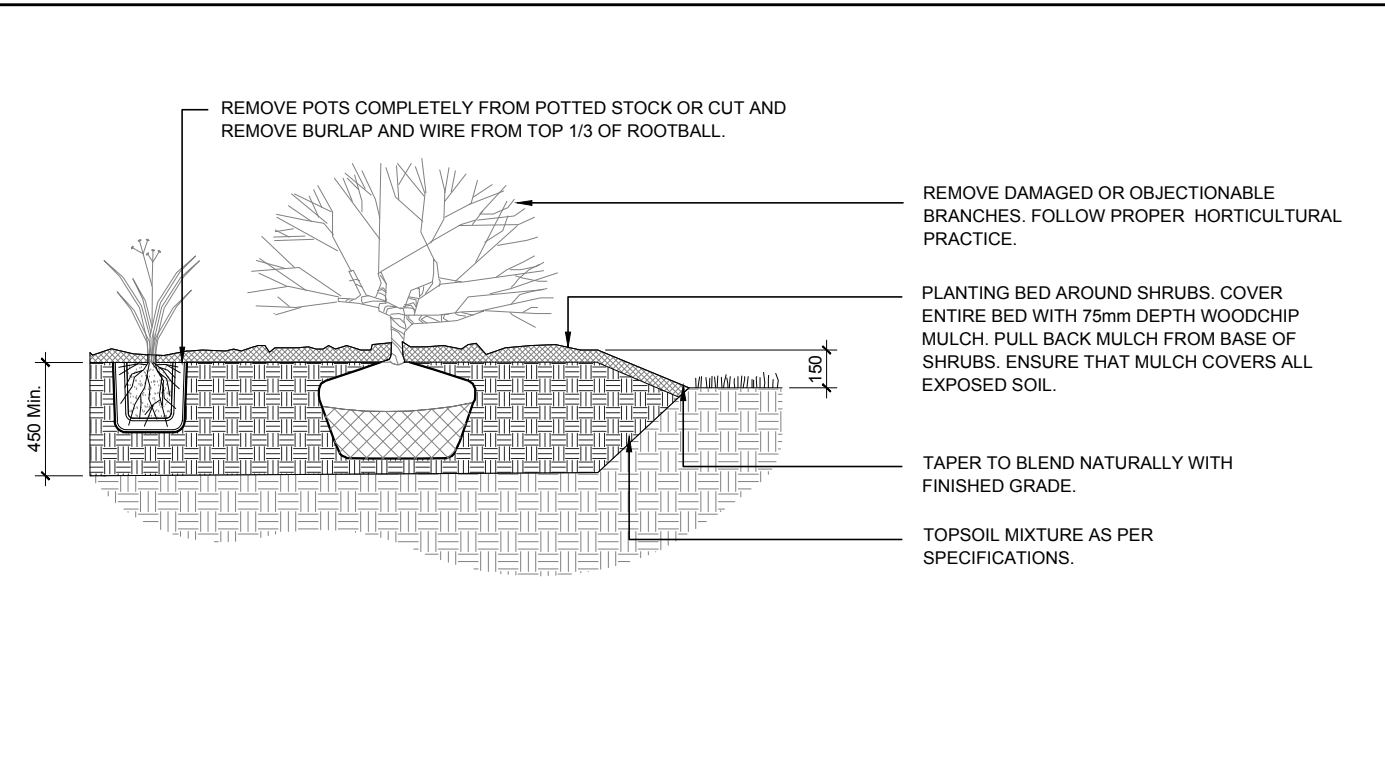
EXISTING TREE LIST

KEY	QTY	BOTANICAL NAME	COMMON NAME	SIZE	CONDITION	CRITICAL ROOT ZONE	ACTION	OWNERSHIP
AN	8	<i>Acer negundo</i>	Manitoba Maple	220-360mm DBH	GOOD	2200-3600mm	To remain	1 Finch Private
AS	2	<i>Acer saccharum</i>	Sugar Maple	250mm DBH	GOOD	2500mm	To remain	156 Twyford Street
MA	1	<i>Malus spp.</i>	Crabapple	200mm DBH	GOOD	2000mm	To be removed	1 Finch Private
PD	3	<i>Populus deltoides</i>	Eastern Cottonwood	100-670mm DBH	GOOD	1000-6700mm	To be removed	1 Finch Private
TA	10	<i>Tilia americana</i>	Basswood	200-510mm DBH	GOOD	2000-5100mm	See plan	1 Finch Private
TO	*	<i>Thuja occidentalis</i>	White Cedar	100mm DBH	GOOD	1000mm	To remain	1 Finch Private
UA	7	<i>Ulmus americana</i>	American Elm	150-250mm DBH	GOOD	1500-2500mm	To be removed	1 Finch Private
WC	*	<i>Thuja occidentalis</i>	White Cedar	150-200mm DBH	GOOD	1500-2000mm	To remain	3415 Uplands

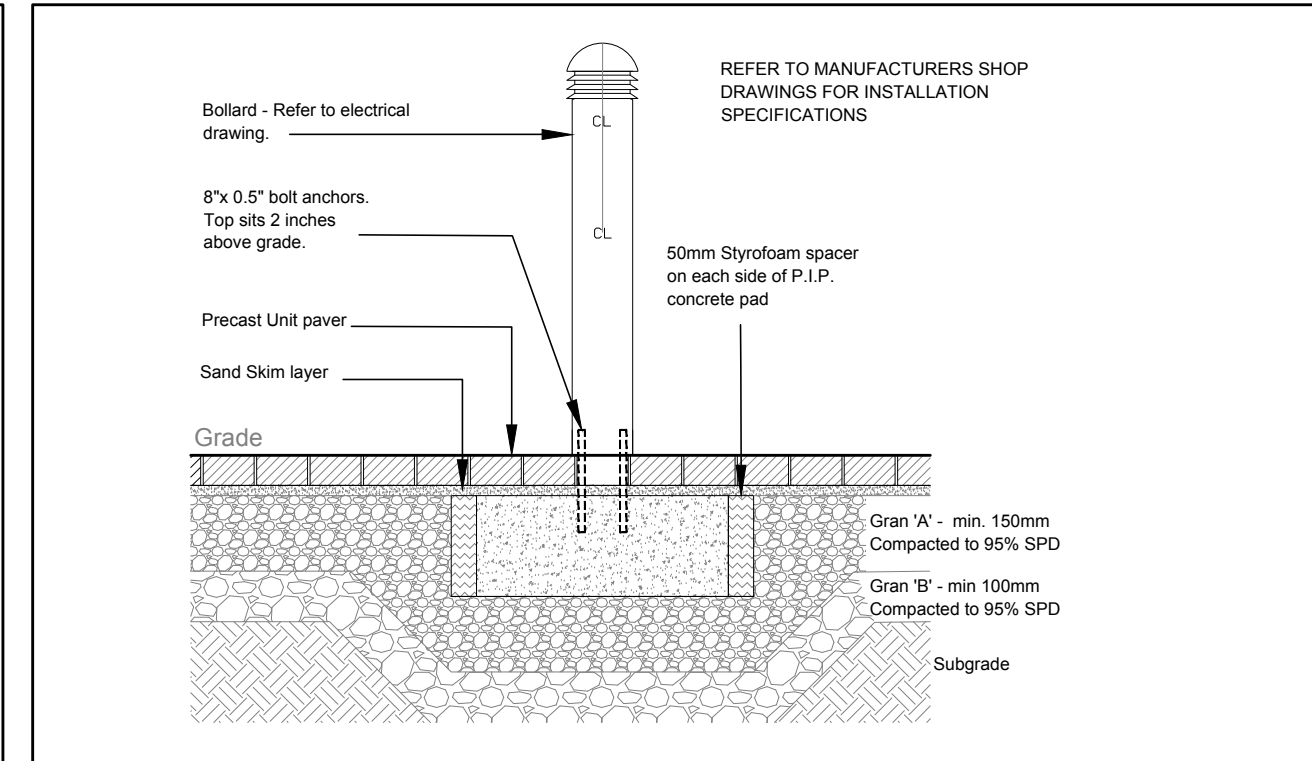
*DENOTES NUMEROUS

PROPOSED PLANT LIST

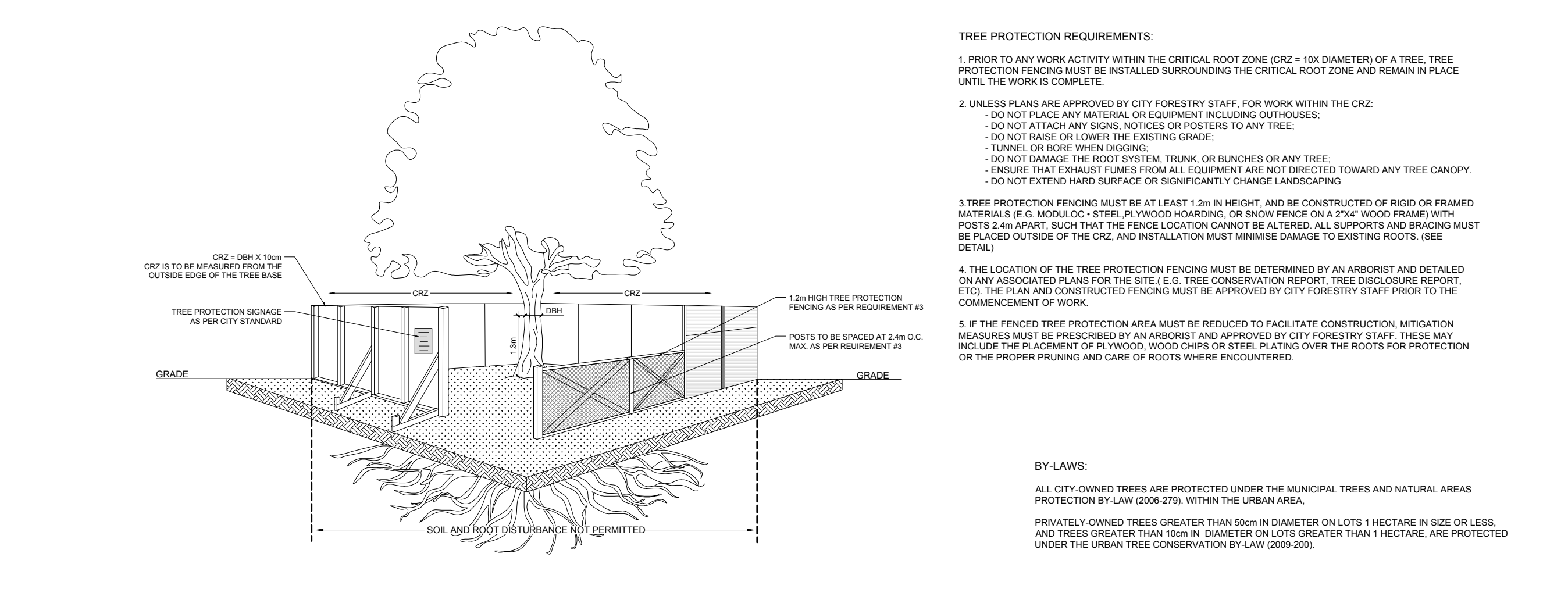
KEY	QTY	BOTANICAL NAME	COMMON NAME	SIZE	CONDITION	REMARKS
HL	1	<i>Gleditsia triacanthos var. inermis</i> Draves	Street Keeper Honey Locust	60mm cal.	B&B	
SHRUBS	6	<i>Pinus mugo</i> 'Pumilio'	Dwarf Mugo Pine	2gal pot	Potted	Space 800mm o.c.
ORNAMENTAL GRASSES						
BL	4	<i>Leymus arenarius</i> 'Blue Lyme'	Blue Lyme Grass	250mm pot	Potted	Space 800mm o.c.
KF	20	<i>Calamagrostis x acutiflora</i> 'Karl Foerster'	Karl Foerster Grass	250mm pot	Potted	Space 800mm o.c.
OD	7	<i>Calamagrostis x acutiflora</i> 'Overdam'	Overdam Grass	250mm pot	Potted	Space 800mm o.c.
PO	19	<i>Miscanthus sinensis</i> 'Strictus'	Porcupine Grass	250mm pot	Potted	Space 800mm o.c.



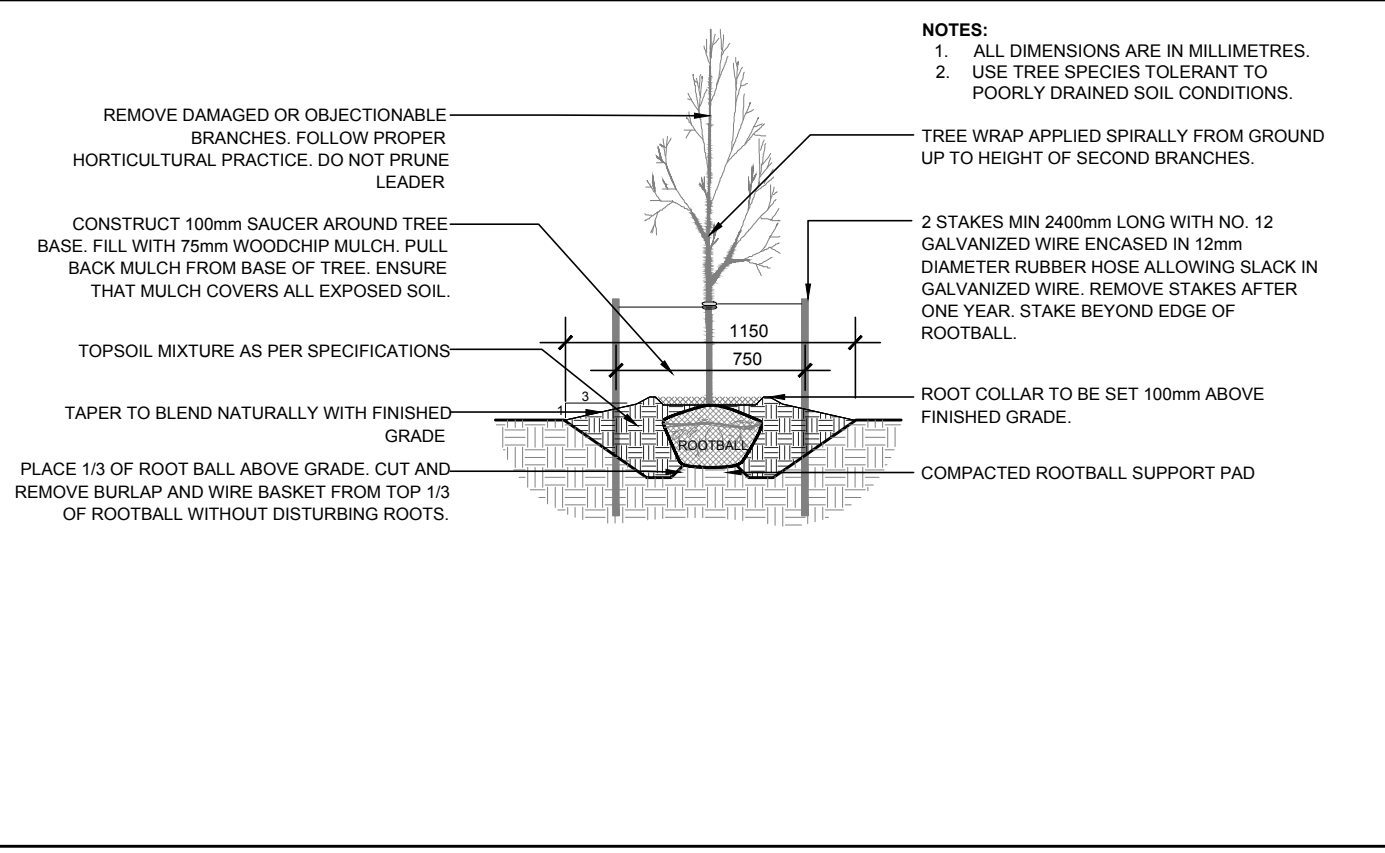
2 SHRUB / ORNAMENTAL GRASS PLANTING
SCALE: NTS



3 BOLLARD LIGHT
SCALE: NTS



4 TREE PROTECTION FENCE
SCALE: NTS



5 DECIDUOUS TREE PLANTING
SCALE: NTS

CLIENT

OTTAWA COMMUNITY HOUSING

CONSULTANTS

ARCHITECTS: **CSV ARCHITECTS**
sustainable design - conception écologique
413.846.8118 190 O'Connor Street, Suite 100
Ottawa, Ontario K2P 0P3

CIVIL ENGINEERS: **McINTOSH PERRY**

SURVEYORS: **McINTOSH PERRY SURVEYING INC.**
3246 Drummond Court, 5A, R.R. #7, Perth, ON K2H 3G3
Tel: 613-267-6524 Fax: 613-267-7992
www.mcintoshperry.com

LEGEND

- PROPOSED SOD
- PROPOSED CONCRETE SIDEWALK
- PROPOSED TYPE 1 CONCRETE PAVERS
- PROPOSED TYPE 2 CONCRETE PAVERS
- EXISTING TREE TO REMAIN
- EXISTING CEDAR HEDGE TO REMAIN
- EXISTING TREE TO BE REMOVED
- PROPOSED DECIDUOUS TREE
- PROPOSED SHRUBS / ORNAMENTAL GRASSES
- TREE PROTECTION FENCE
- PROPOSED BOLLARD LIGHT
- PROPOSED BIKE PARKING SPACE
- PROPOSED BENCH
- PROPOSED TABLE & CHAIRS

1	ISSUED FOR SITE PLAN CONTROL	05/12/2023	ML	JL
No.	Issue	Date	DR	CK
		MM/DD/YY		

JAMES B. LENNOX & ASSOCIATES INC. LANDSCAPE ARCHITECTS
3332 CARLING AVE. OTTAWA, ONTARIO K2H 5A8
Tel. (613) 722-5168 Fax. (866) 343-3942

PROJECT

SHEARWATER COURT NEW BUILDING
1 FINCH PRIVATE, OTTAWA ON

DRAWING

TREE CONSERVATION REPORT &
LANDSCAPE PLAN- FULL SITE

STAMP

SCALE

AS SHOWN

START DATE

DECEMBER, 2022

PROJECT NO.

23CSV2318

DRAWING NO.

L.2

PLOT SIZE ARCH-D