

METRIC DISTANCES AND COORDINATES SHOWN ON THIS PLAN ARE IN METRES AND CAN BE CONVERTED TO FEET BY DIVIDING BY 0.3048

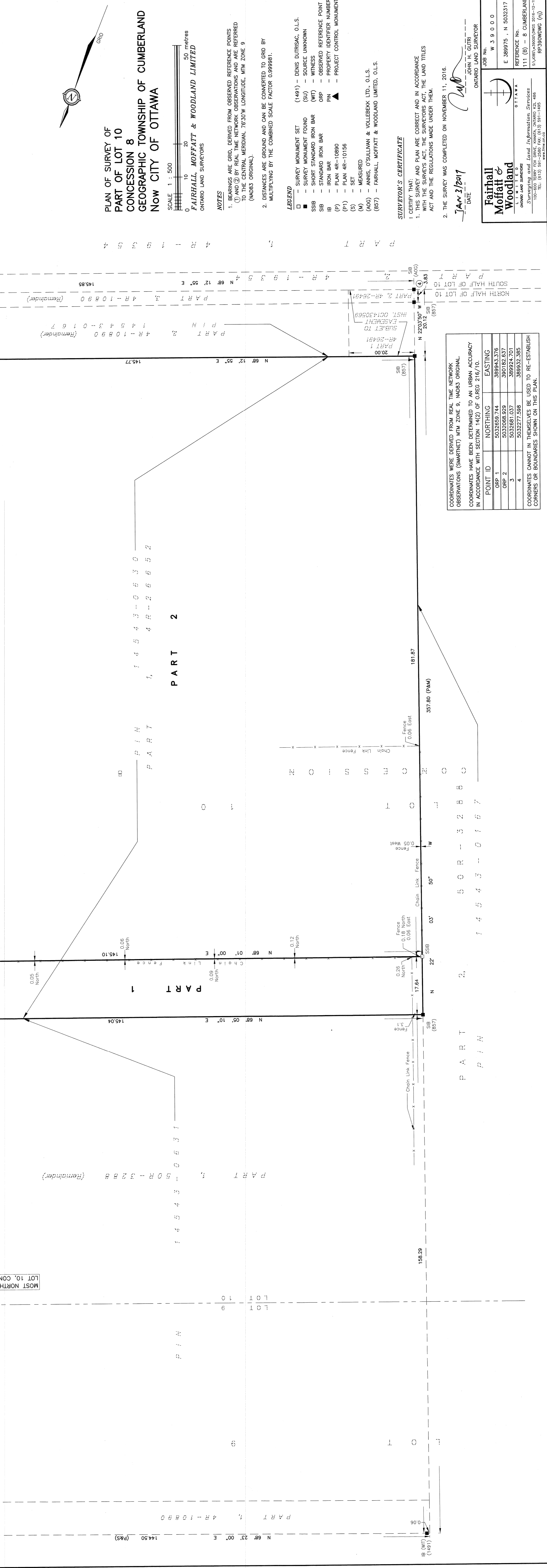
FRANK PIN KENNY ROAD
 ROAD ALLOWANCE BETWEEN CONCESSIONS 7 & 8
 637.44

PLAN 4R-30029
 RECEIVED AND DEPOSITED
 DATE JAN 3 2017
 DATE 2017
 JOHN H. GUTRI, O.L.S.

FAIRHALL MOFFATT & WOODLAND LIMITED
 ONTARIO LAND SURVEYORS

SCHEDULE	
PART	CONCESSION
1	8
2	ALL OF 14543-0630

LAND REGISTRAR FOR THE
 LAND TITLES DIVISION OF
 OTTAWA - CARLETON (N. 4.)



PLAN OF SURVEY OF
 PART OF LOT 10
 CONCESSION 8
 GEOGRAPHIC TOWNSHIP OF CUMBERLAND
 NOW CITY OF OTTAWA

SCALE 1:500
 0 10 20 30 40 50 metres

FAIRHALL MOFFATT & WOODLAND LIMITED
 ONTARIO LAND SURVEYORS

NOTES
 1. BEARINGS ARE GRID, DERIVED FROM OBSERVED REFERENCE POINTS
 AND (2) BY REAL TIME NETWORK OBSERVATIONS AND ARE REFERRED
 TO THE CENTRAL MERIDIAN, 76°30'W LONGITUDE, MTM ZONE 9
 (NAD83 ORIGINAL).
 2. DISTANCES ARE GROUND AND CAN BE CONVERTED TO GRID BY
 MULTIPLYING BY THE COMBINED SCALE FACTOR 0.999981.

LEGEND
 (1491) - SURVEY MONUMENT SET (DENS DUTRISAC, O.L.S.)
 (SU) - SURVEY MONUMENT FOUND (SOURCE UNKNOWN)
 (WIT) - SHORT STANDARD IRON BAR (WITNESS)
 (CRP) - STANDARD IRON BAR (OBSERVED REFERENCE POINT)
 (PIN) - IRON BAR (PROPERTY IDENTIFIER NUMBER)
 (P1) - PLAN 4R-10890
 (P2) - PLAN 4R-10156
 (S) - SET
 (M) - MEASURED
 (A00) - ANNIS, O'SULLIVAN & VOLLEBEKK LTD., O.L.S.
 (857) - FAIRHALL, MOFFATT & WOODLAND LIMITED, O.L.S.

SURVEYOR'S CERTIFICATE
 I CERTIFY THAT:
 1. THIS SURVEY AND PLAN ARE CORRECT AND IN ACCORDANCE
 WITH THE SURVEY ACT, THE SURVEYORS ACT, THE LAND TITLES
 ACT AND THE REGULATIONS MADE UNDER THEM.
 2. THE SURVEY WAS COMPLETED ON NOVEMBER 11, 2016.

DATE JAN 3 2017
 JOHN H. GUTRI
 ONTARIO LAND SURVEYOR

JOB No. W 3 9 0 0
 E 389975, N 5032317
 REFERENCE No.
 111 (B) - 8 CUMBERLAND
 SURVEYING AND LAND INFORMATION SERVICES
 1100 UNIVERSITY AVENUE, SUITE 406
 OTTAWA, ONTARIO K1N 6N5
 TEL: (613) 591-2500 FAX: (613) 591-1455
 www.fmw.com

COORDINATES WERE DERIVED FROM REAL TIME NETWORK
 OBSERVATIONS (SMARTNET) MTM ZONE 9, NAD83 ORIGINAL.
 COORDINATES HAVE BEEN DETERMINED TO AN URBAN ACCURACY
 IN ACCORDANCE WITH SECTION 14(2) OF ORES 216/10.

POINT ID	NORTHING	EASTING
ORP 1	5032659.744	389943.376
ORP 2	5032668.929	390182.637
3	5032681.037	389924.701
4	5032277.598	389932.385

COORDINATES CANNOT IN THEMSELVES BE USED TO RE-ESTABLISH
 CORNERS OR BOUNDARIES SHOWN ON THIS PLAN.