

19 CENTREPOINTE DRIVE



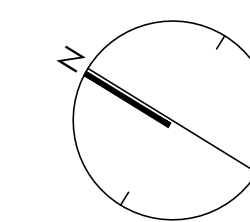
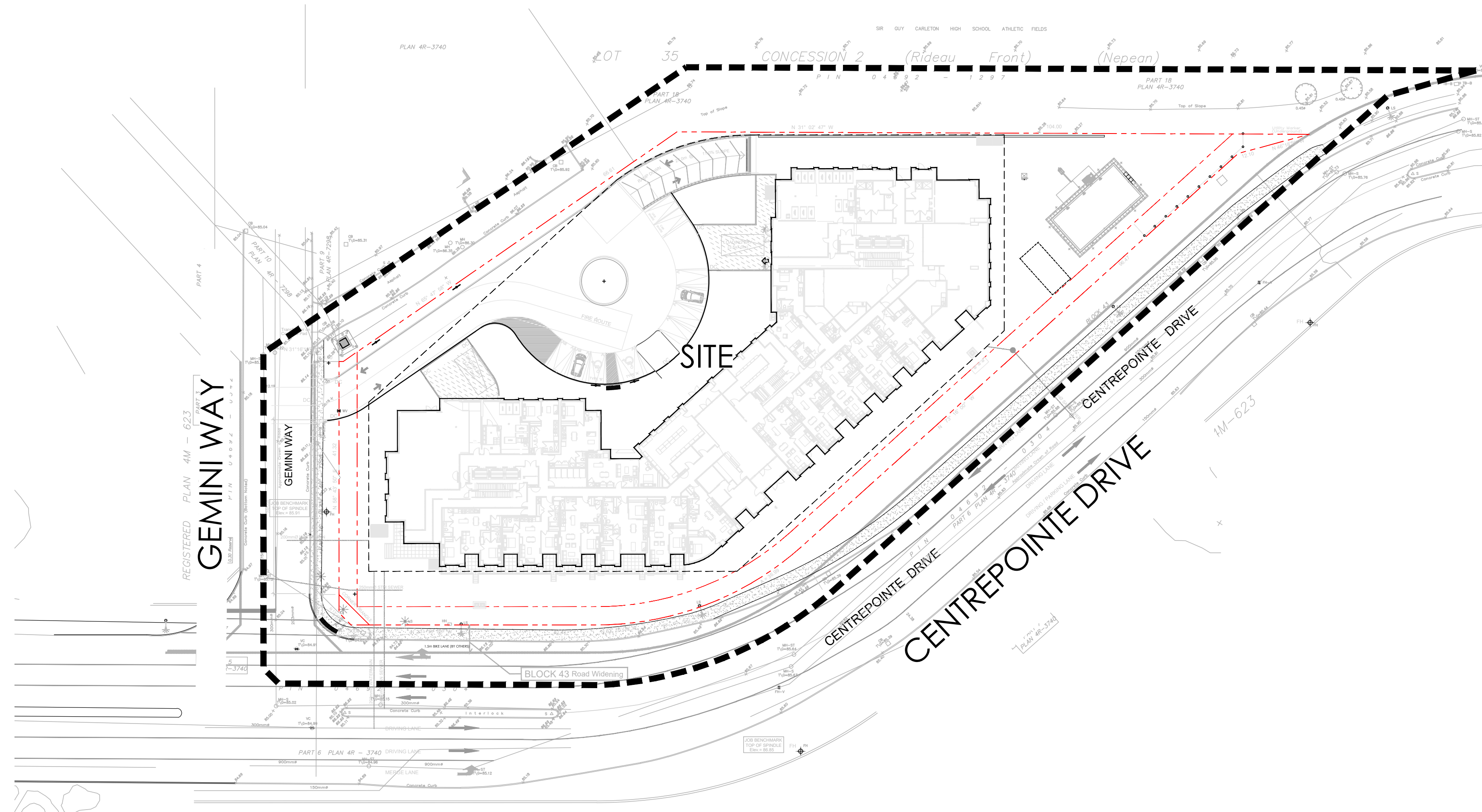
NAK PROJECT NO. 20-039

PROJECT ADDRESS:
OTTAWA, ON

ISSUED FOR CITY REVIEW
APRIL 4, 2023

LIST OF DRAWINGS:

- L-01 - OVERALL LANDSCAPE PLAN
- L-02 - GROUND FLOOR NORTH LAYOUT PLAN
- L-03 - GROUND FLOOR AMENITY LAYOUT PLAN
- L-04 - GROUND FLOOR NORTH PLANTING PLAN
- L-05 - GROUND FLOOR AMENITY PLANTING PLAN
- L-06 - ROOF TERRACE
- L-07 - GROUND FLOOR DETAILS
- L-08 - GROUND FLOOR DETAILS
- L-09 - TERRACE DETAILS



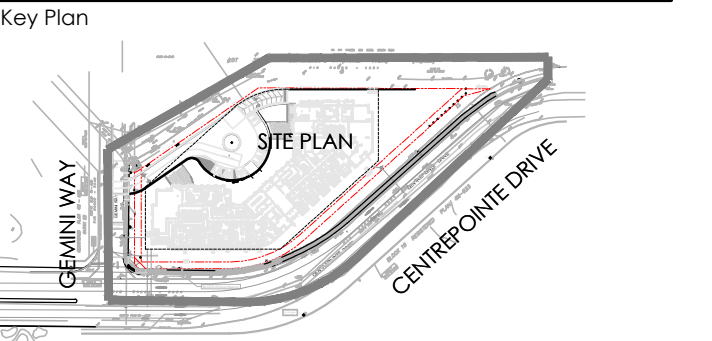
KEYMAP
NTS

Allison Hamlin

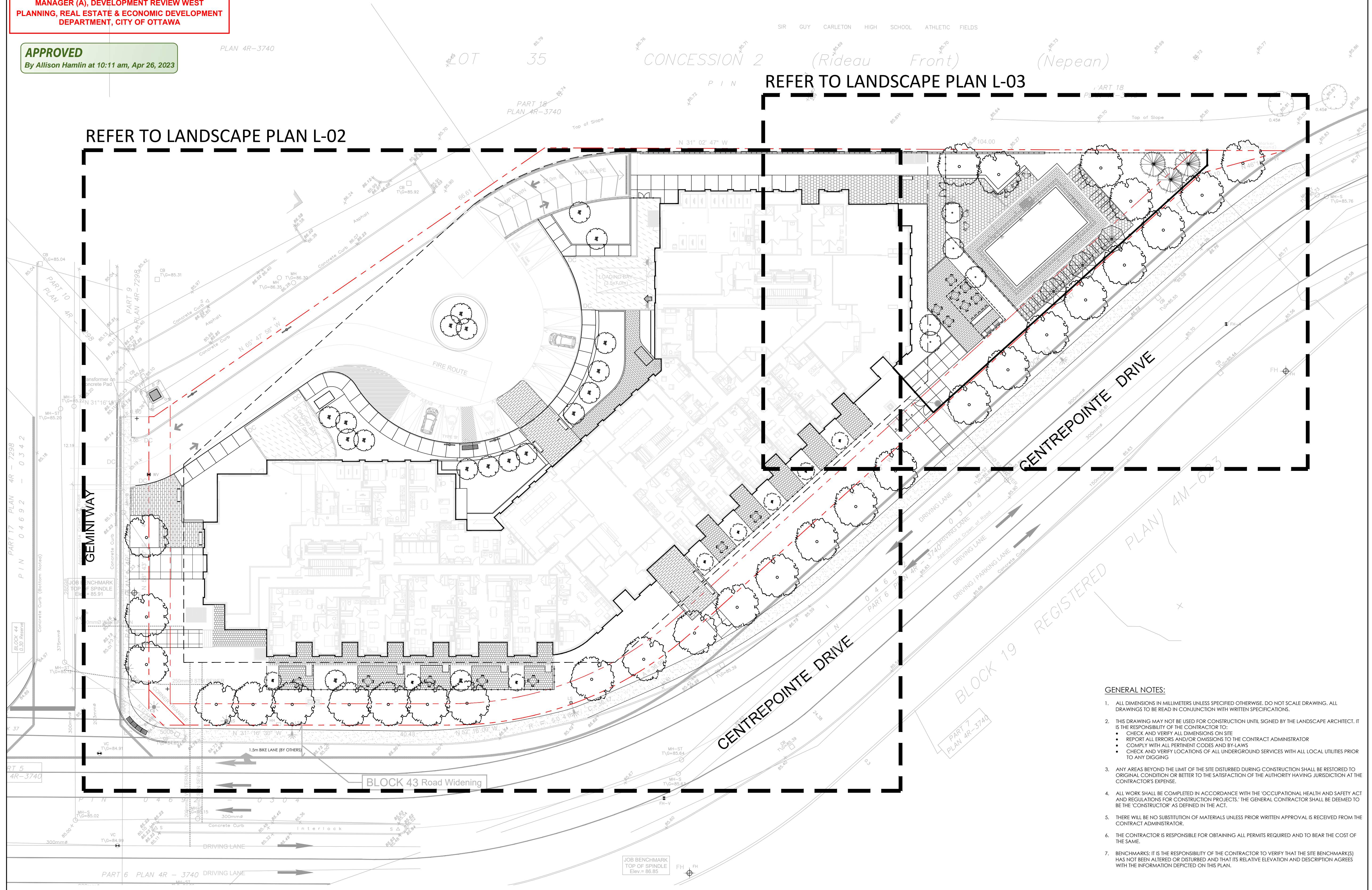
ALLISON HAMLIN
MANAGER (A), DEVELOPMENT REVIEW WEST
PLANNING, REAL ESTATE & ECONOMIC DEVELOPMENT
DEPARTMENT, CITY OF OTTAWA

APPROVED
 By Allison Hamlin at 10:11 am, Apr 26, 2023

Contractor shall check all dimensions on the work and report any discrepancy to the Landscape Architect before proceeding. All drawings and specifications are the property of the Landscape Architect and must be returned at the completion of the work. This drawing is not to be used for construction until signed by the Landscape Architect.

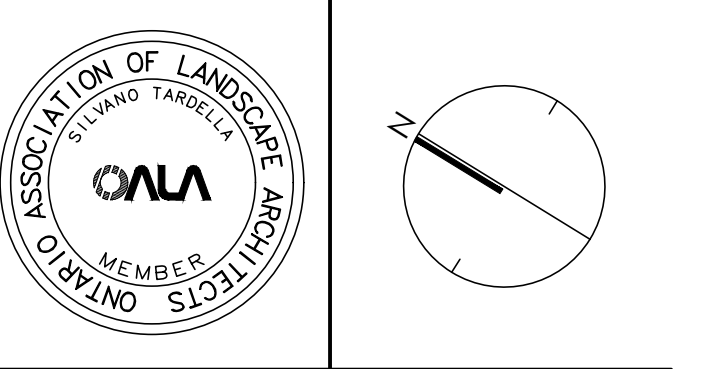


Client:
RICHCRAFT™
 Group of Companies



No.	Description	Date
13	Issued for City Review	Apr 4/23
12	Issued for Coordination	Mar 10/23
11	Issued for Review	Jan 31/23
10	Issued for Building Permit	Dec 14/22
9	Issued for 60% Review	Oct 20/22
8	Issued for Foundation Permit	Oct 14/22
7	Progress Submission	Sept 16/22
6	Issued for Planting Review	May 30/22
5	Issued for Review	May 26/22
4	Re-issued for Third Submission	Feb 25/22
3	Issued for Third Submission	Jan 12/22
2	Issued for Second Submission	Sept 8/21
1	Issued for First Submission	May 4/21

CONSULTANTS	
ARCHITECT	ROSECK LANEY ARCHITECTS INC. 54 BEECH STREET, OTTAWA, ON K1S 3A6
ENGINEER	DAVID SCHAFER ENGINEERING LTD. 15 BEECH ST. 2ND FL. OTTAWA, ON K1S 3B9
SURVEYOR	JZ BARNES LTD. 15-240 LANCASTER ROAD, OTTAWA, ON K1B 9H3
OWNER	RICHCRAFT HOMES 2285 ST. LAWRENCE BLVD. SUITE 201, OTTAWA, ON K1G 4E1
PLANNING	FOURIN PLANNING + DESIGN 223 MCLEOD STREET, OTTAWA, ON K2P 0B7



NAK
 design strategies
 1285 WELLINGTON STREET WEST, OTTAWA, ON K1Y 3A8 CANADA
 T 613.237.2345 F 613.237.4423 NAKDESIGNSTRATEGIES.COM
 Project

19 CENTREPOINTE DRIVE
 OTTAWA, ONTARIO

Title
OVERALL LANDSCAPE PLAN

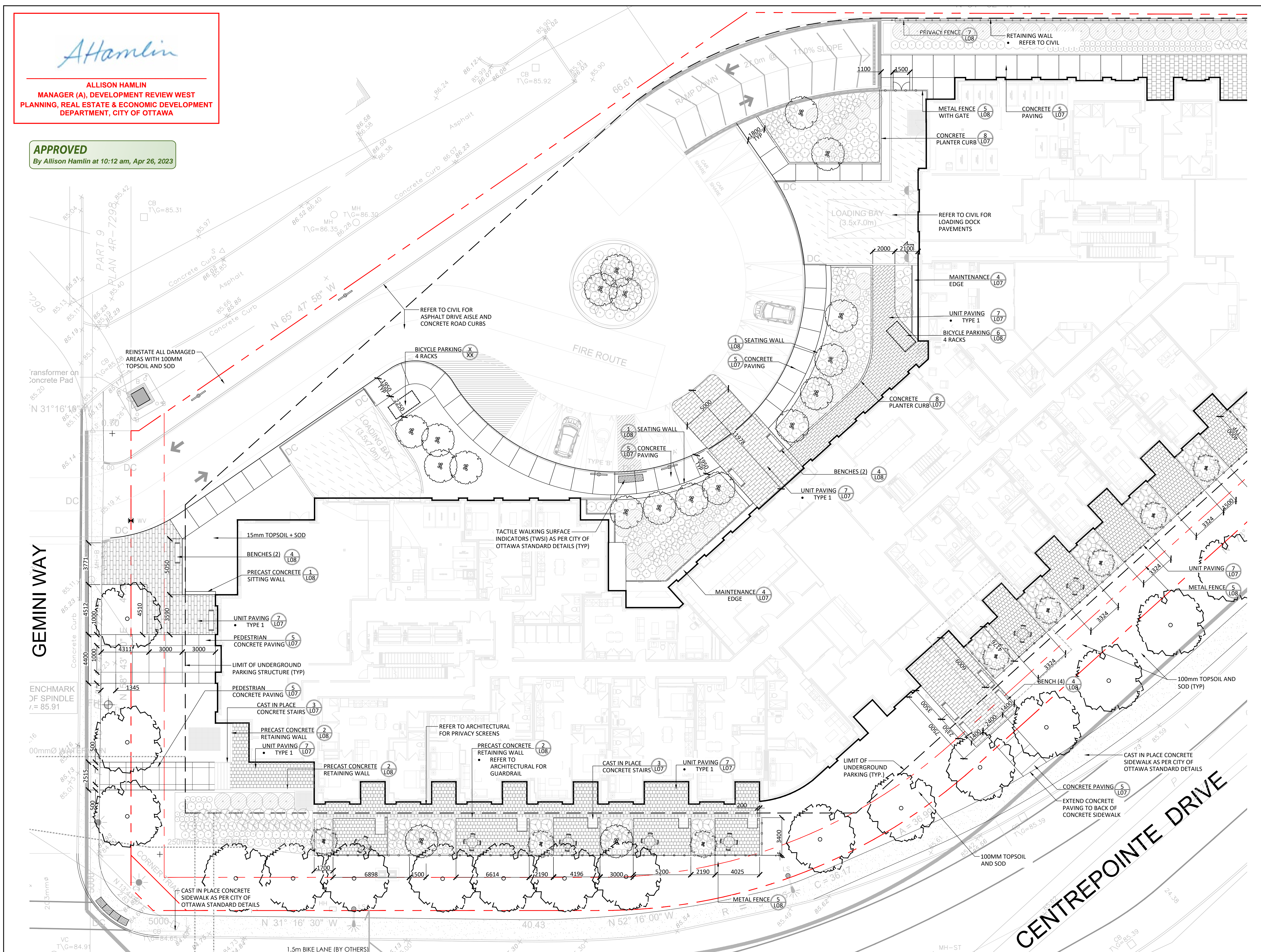
Date	December 2022	Sheet	
Scale	1:250		
Drawn	AM / PG		
Checked	SC		
Job No.	20-039		
			L-01

- GENERAL NOTES:**
- ALL DIMENSIONS IN MILLIMETERS UNLESS SPECIFIED OTHERWISE. DO NOT SCALE DRAWING. ALL DRAWINGS TO BE READ IN CONJUNCTION WITH WRITTEN SPECIFICATIONS.
 - THIS DRAWING MAY NOT BE USED FOR CONSTRUCTION UNTIL SIGNED BY THE LANDSCAPE ARCHITECT. IT IS THE RESPONSIBILITY OF THE CONTRACTOR TO:
 - CHECK AND VERIFY ALL DIMENSIONS ON SITE
 - REPORT ALL ERRORS AND/OR OMISSIONS TO THE CONTRACT ADMINISTRATOR
 - COMPLY WITH ALL PERTINENT CODES AND BY-LAWS
 - CHECK AND VERIFY LOCATIONS OF ALL UNDERGROUND SERVICES WITH ALL LOCAL UTILITIES PRIOR TO ANY DIGGING
 - ANY AREAS BEYOND THE LIMIT OF THE SITE DISTURBED DURING CONSTRUCTION SHALL BE RESTORED TO ORIGINAL CONDITION OR BETTER TO THE SATISFACTION OF THE AUTHORITY HAVING JURISDICTION AT THE CONTRACTOR'S EXPENSE.
 - ALL WORK SHALL BE COMPLETED IN ACCORDANCE WITH THE 'OCCUPATIONAL HEALTH AND SAFETY ACT AND REGULATIONS FOR CONSTRUCTION PROJECTS'. THE GENERAL CONTRACTOR SHALL BE DEEMED TO BE THE 'CONTRACTOR' AS DEFINED IN THE ACT.
 - THERE WILL BE NO SUBSTITUTION OF MATERIALS UNLESS PRIOR WRITTEN APPROVAL IS RECEIVED FROM THE CONTRACT ADMINISTRATOR.
 - THE CONTRACTOR IS RESPONSIBLE FOR OBTAINING ALL PERMITS REQUIRED AND TO BEAR THE COST OF THE SAME.
 - BENCHMARKS: IT IS THE RESPONSIBILITY OF THE CONTRACTOR TO VERIFY THAT THE SITE BENCHMARK(S) HAS NOT BEEN ALTERED OR DISTURBED AND THAT ITS RELATIVE ELEVATION AND DESCRIPTION AGREES WITH THE INFORMATION DEPICTED ON THIS PLAN.

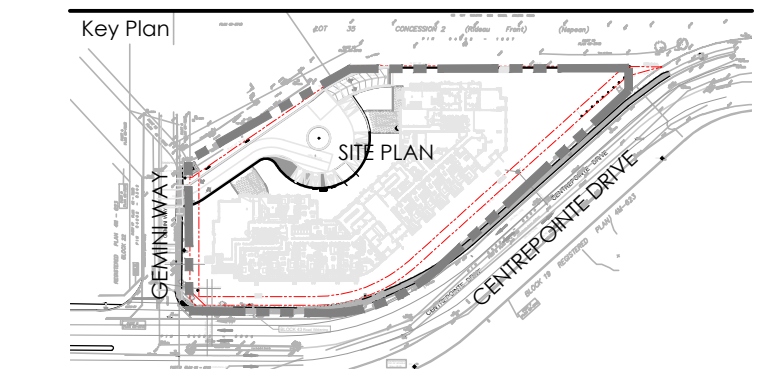
A Hamlin

ALLISON HAMLIN
MANAGER (A), DEVELOPMENT REVIEW WEST
PLANNING, REAL ESTATE & ECONOMIC DEVELOPMENT
DEPARTMENT, CITY OF OTTAWA

APPROVED
 By Allison Hamlin at 10:12 am, Apr 26, 2023



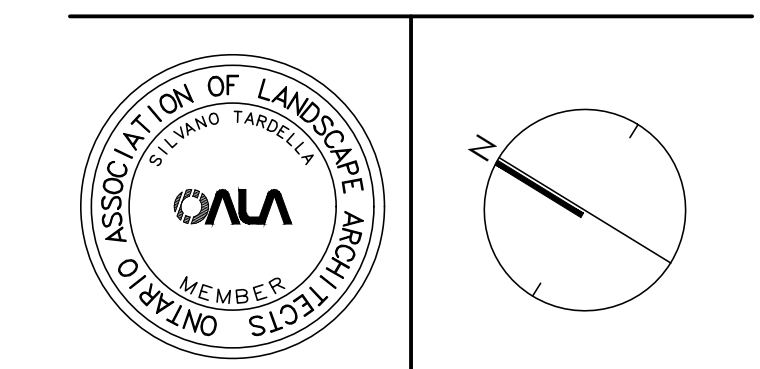
Contractor shall check all dimensions on the work and report any discrepancy to the Landscape Architect before proceeding. All drawings and specifications are the property of the Landscape Architect and must be returned at the completion of the work. This drawing is not to be used for construction until signed by the Landscape Architect.



Client:
RICH CRAFT™
 Group of Companies

No.	Description	Date
13	Issued for City Review	Apr 4/23
12	Issued for Coordination	Mar 10/23
11	Issued for Review	Jan 31/23
10	Issued for Building Permit	Dec 16/22
9	Issued for 60% Review	Oct 20/22
8	Issued for Foundation Permit	Oct 14/22
7	Progress Submission	Sept 14/22
6	Issued for Planning Review	May 30/22
5	Issued for Review	May 26/22
4	Re-issued for Third Submission	Feb 25/22
3	Issued for Third Submission	Jan 12/22
2	Issued for Second Submission	Sept 8/21
1	Issued for First Submission	May 4/21

CONSULTANTS	
ARCHITECT	RODRICK LANEY ARCHITECTS INC. 84 BRIDGE STREET, OTTAWA, ON K1S 3J4
ENGINEER	DAVID SCHIFFER ENGINEERING LTD. 120 RIVER RD. SUITE 103, OTTAWA, ON K2S 1E9
SURVEYOR	J.D. BARNES LTD. 15500 LANSFATER ROAD, OTTAWA, ON K1B 3D3
OWNER	RICH CRAFT HOMES 2280 ST. LAWRENCE BLVD. SUITE 201, OTTAWA, ON K1G 4K1
PLANNING	POTTERY PLANNING & DESIGN 250 WOODBINE STREET, OTTAWA, ON K2P 2B3



NAK
 design strategies
 1285 WELLINGTON STREET WEST, OTTAWA, ON K1Y 3A8 CANADA
 T 613.237.2345 F 613.237.6423 NAKDESIGNSTRATEGIES.COM

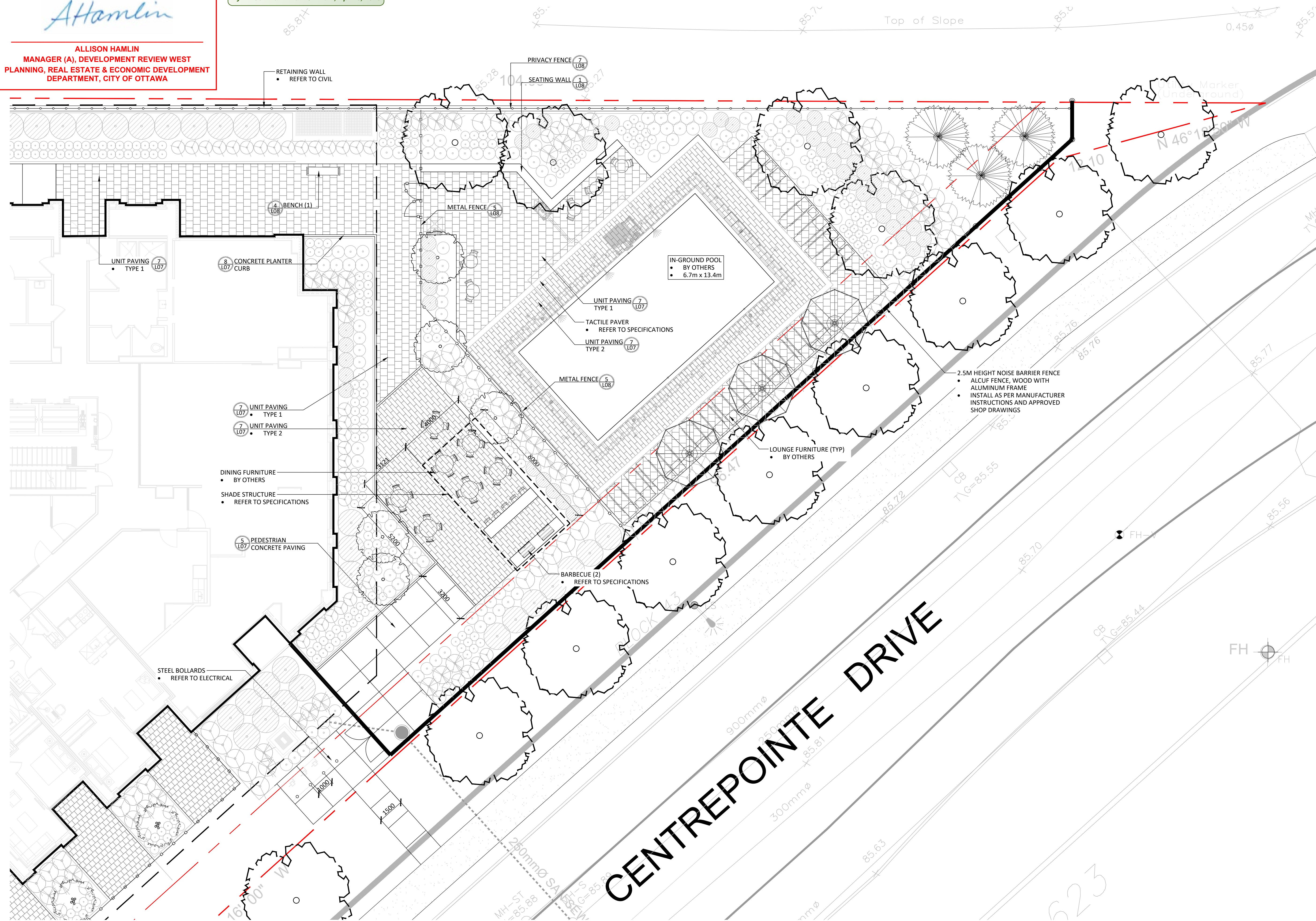
19 CENTREPOINTE DRIVE
 OTTAWA, ONTARIO

Title		GROUND FLOOR NORTH LAYOUT PLAN
Date	December 2022	Sheet
Scale	1:150	
Drawn	AM / PG	
Checked	JSC	
Job No.	20-039	L-02

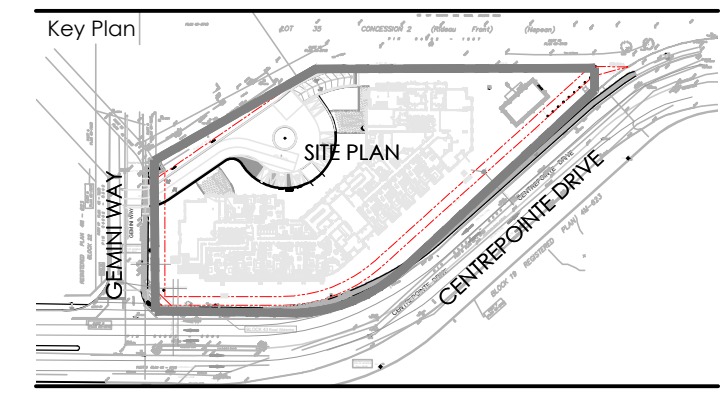
Attamlin

ALLISON HAMLIN
MANAGER (A), DEVELOPMENT REVIEW WEST
PLANNING, REAL ESTATE & ECONOMIC DEVELOPMENT
DEPARTMENT, CITY OF OTTAWA

APPROVED
 By Allison Hamlin at 10:11 am, Apr 26, 2023



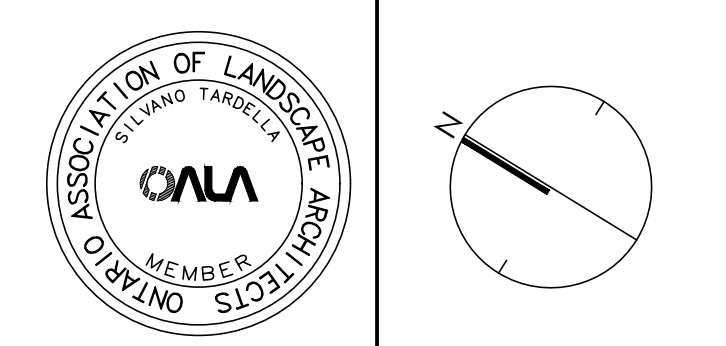
Contractor shall check all dimensions on the work and report any discrepancy to the Landscape Architect before proceeding. All drawings and specifications are the property of the Landscape Architect and must be returned at the completion of the work. This drawing is not to be used for construction until signed by the Landscape Architect.



Client:
RICHCRAFT™
 Group of Companies

No.	Description	Date
13	Issued for City Review	Apr 4/23
12	Issued for Coordination	Mar 10/23
11	Issued for Review	Jan 31/23
10	Issued for Building Permit	Dec 16/22
9	Issued for 60% Review	Oct 20/22
8	Issued for Foundation Permit	Oct 14/22
7	Progress Submission	Sept 14/22
6	Issued for Planting Review	May 30/22
5	Issued for Review	May 26/22
4	Re-issued for Third Submission	Feb 25/22
3	Issued for Third Submission	Jan 12/22
2	Issued for Second Submission	Sept 8/21
1	Issued for First Submission	May 4/21

CONSULTANTS	
ARCHITECT	RODRICK LANEY ARCHITECTS P.C. 84 BIRCH STREET, OTTAWA, ON K1J 3J4
ENGINEER	DAVID SCHNEIFER ENGINEERING LTD. 120 RIVER RD. SUITE 103, OTTAWA, ON K2S 1B9
SURVEYOR	J.D. BARNES LTD. 15340 LAKESHORE ROAD, OTTAWA, ON K1B 3N3
OWNER	RICHCRAFT HOMES 2280 ST. LAURENT BLVD. SUITE 201, OTTAWA, ON K1G 4K1
PLANNING	FOOTPATH PLANNING + DESIGN 250 HURON STREET, OTTAWA, ON K2P 0Z8



NAK
 design strategies
 1285 WELLINGTON STREET WEST, OTTAWA, ON K1Y 3A8 CANADA
 T 613.237.2345 F 613.237.6423 NAKDESIGNSTRATEGIES.COM

Project
 19 CENTREPOINTE DRIVE
 OTTAWA, ONTARIO

Title
 GROUND FLOOR AMENITY
 LAYOUT PLAN

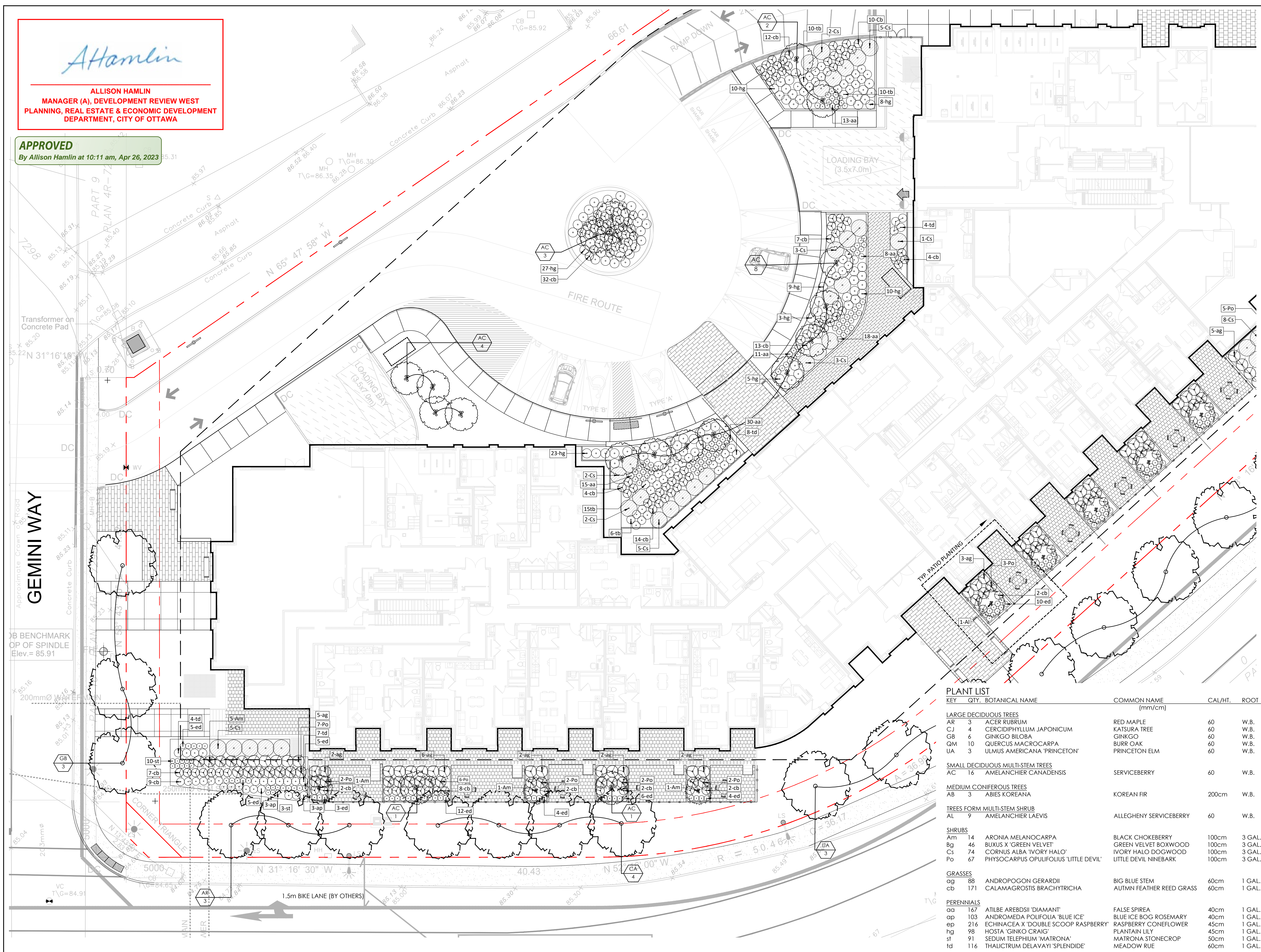
Date: December 2022 Sheet
 Scale: 1:150
 Drawn: AM / PG
 Checked: JSC
 Job No.: 20-039

L-03

AtHamlin

ALLISON HAMLIN
MANAGER (A), DEVELOPMENT REVIEW WEST
PLANNING, REAL ESTATE & ECONOMIC DEVELOPMENT
DEPARTMENT, CITY OF OTTAWA

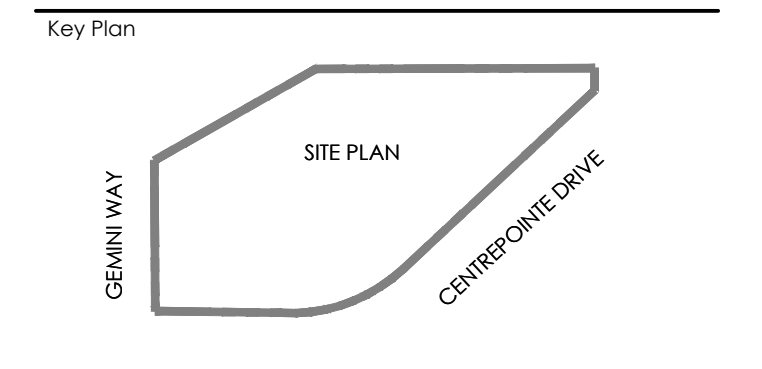
APPROVED
By Allison Hamlin at 10:11 am, Apr 26, 2023



PLANT LIST

KEY	QTY.	BOTANICAL NAME	COMMON NAME (mm/cm)	CAL/HT.	ROOT
LARGE DECIDUOUS TREES					
AR	3	ACER RUBRUM	RED MAPLE	60	W.B.
CJ	4	CERCIDIPHYLLUM JAPONICUM	KATSURA TREE	60	W.B.
GB	6	GINKGO BILOBA	GINKGO	60	W.B.
QM	10	QUERCUS MACROCARPA	BURR OAK	60	W.B.
UA	3	ULMUS AMERICANA 'PRINCETON'	PRINCETON ELM	60	W.B.
SMALL DECIDUOUS MULTI-STEM TREES					
AC	16	AMELANCHIER CANADENSIS	SERVICEBERRY	60	W.B.
MEDIUM CONIFEROUS TREES					
AB	3	ABIES KOREANA	KOREAN FIR	200cm	W.B.
TREES FORM MULTI-STEM SHRUB					
AL	9	AMELANCHIER LAEVIS	ALLEGHENY SERVICEBERRY	60	W.B.
SHRUBS					
Am	14	ARONIA MELANOCARPA	BLACK CHOKEBERRY	100cm	3 GAL.
Bg	46	BUXUS X 'GREEN VELVET'	GREEN VELVET BOXWOOD	100cm	3 GAL.
Cs	74	CORNUS ALBA 'IVORY HALO'	IVORY HALO DOGWOOD	100cm	3 GAL.
Po	67	PHYSOCARPUS OPULIFOLIUS 'LITTLE DEVIL'	LITTLE DEVIL NINEBARK	100cm	3 GAL.
GRASSES					
og	88	ANDROPOGON GERARDII	BIG BLUE STEM	60cm	1 GAL.
cb	171	CALAMAGROSIS BRACHYTRICHA	AUTUMN FEATHER REED GRASS	60cm	1 GAL.
PERENNIALS					
oa	167	ATILBE AREBDSII 'DIAMANT'	FALSE SPIREA	40cm	1 GAL.
op	103	ANDROMEDA POLIFOLIA 'BLUE ICE'	BLUE ICE BOG ROSEMARY	40cm	1 GAL.
ep	216	ECHINACEA X 'DOUBLE SCOOP RASPBERRY'	RASPBERRY CONEFLOWER	45cm	1 GAL.
hg	98	HOSTA 'GINKO CRAIG'	PLANTAIN LILY	45cm	1 GAL.
st	91	SEDUM TELEPHIUM 'MATRONA'	MATRONA STONECROP	50cm	1 GAL.
td	116	THALICTRUM DELAVAYI 'SPLENDE'	MEADOW RUE	60cm	1 GAL.

Contractor shall check all dimensions on the work and report any discrepancy to the Landscape Architect before proceeding. All drawings and specifications are the property of the Landscape Architect and must be returned at the completion of the work. This drawing is not to be used for construction until signed by the Landscape Architect.

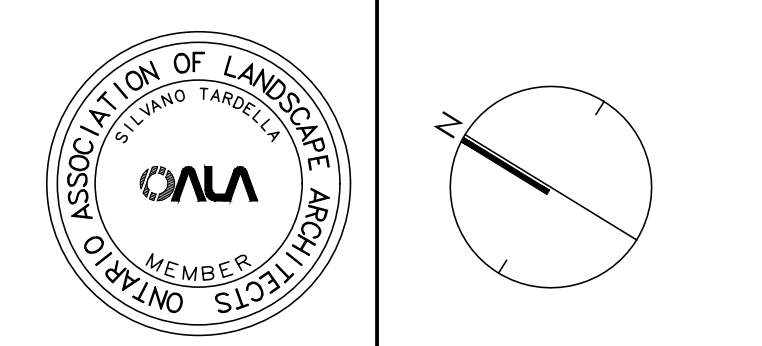


Client:
RICH CRAFT™
Group of Companies

- PLANTING
- LARGE DECIDUOUS TREE
 - SMALL DECIDUOUS TREE
 - CONIFEROUS TREE
 - TREE FORM SHRUB
 - SHRUB
 - GRASS/ PERENNIAL

No.	Description	Date
13	Issued for City Review	Apr 4/23
12	Issued for Coordination	Mar 10/23
11	Issued for Review	Jan 31/23
10	Issued for Building Permit	Dec 16/22
9	Issued for 60% Review	Oct 20/22
8	Issued for Foundation Permit	Oct 14/22
7	Progress Submission	Sept 14/22
6	Issued for Planning Review	May 30/22
5	Issued for Review	May 26/22
4	Re-issued for Third Submission	Feb 25/22
3	Issued for Third Submission	Jan 12/22
2	Issued for Second Submission	Sept 8/21
1	Issued for First Submission	May 4/21

CONSULTANTS	
ARCHITECT	RODRICK LANEY ARCHITECTS INC. 34 BIRCH STREET, OTTAWA, ON K1S 3J4
ENGINEER	DAVID SCHIFFER ENGINEERING LTD. 120 RIVER RD. SUITE 103, OTTAWA, ON K2S 1E9
SURVEYOR	J.D. BARNES LTD. 15500 LAKEVIEW ROAD, OTTAWA, ON K1B 5N3
OWNER	RICH CRAFT HOMES 2280 ST. LAURENT BLVD. SUITE 201, OTTAWA, ON K1G 4K1
PLANNING	POTTER & PARTNERS - DESIGN 250 HURON STREET, OTTAWA, ON K2P 2B5



NAK
design strategies
1285 WELLINGTON STREET WEST, OTTAWA, ON K1Y 3A8 CANADA
T 613.237.2345 F 613.237.6223 NAKDESIGNSTRATEGIES.COM

19 CENTREPOINTE DRIVE
OTTAWA, ONTARIO

Title: GROUND FLOOR NORTH PLANTING PLAN
Date: December 2022 Sheet:
Scale: 1:150
Drawn: AM / PG
Checked: JSC
Job No.: 20-039

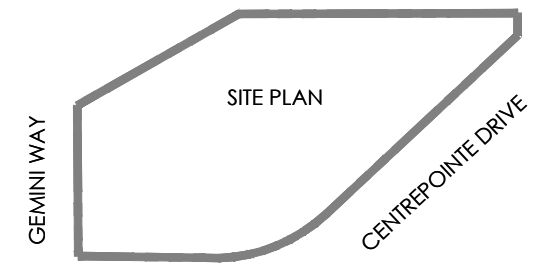
At Hamlin

ALLISON HAMLIN
MANAGER (A), DEVELOPMENT REVIEW WEST
PLANNING, REAL ESTATE & ECONOMIC DEVELOPMENT
DEPARTMENT, CITY OF OTTAWA

APPROVED
By Allison Hamlin at 10:11 am, Apr 26, 2023

Contractor shall check all dimensions on the work and report any discrepancy to the Landscape Architect before proceeding. All drawings and specifications are the property of the Landscape Architect and must be returned at the completion of the work. This drawing is not to be used for construction until signed by the Landscape Architect.

Key Plan



Client:

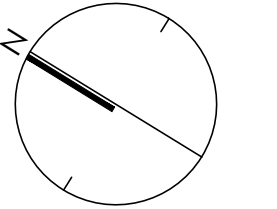
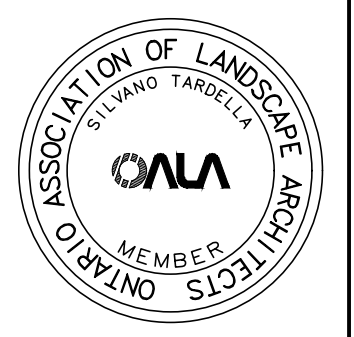


PLANTING

- LARGE DECIDUOUS TREE
- SMALL DECIDUOUS TREE
- CONIFEROUS TREE
- TREE FORM SHRUB
- SHRUB
- GRASS / PERENNIAL

No.	Description	Date
13	Issued for City Review	Apr 4/23
12	Issued for Coordination	Mar 10/23
11	Issued for Review	Jan 31/23
10	Issued for Building Permit	Dec 16/22
9	Issued for 60% Review	Oct 20/22
8	Issued for Foundation Permit	Oct 14/22
7	Progress Submission	Sept 16/22
6	Issued for Planting Review	May 30/22
5	Issued for Review	May 26/22
4	Re-issued for Third Submission	Feb 25/22
3	Issued for Third Submission	Jan 12/22
2	Issued for Second Submission	Sept 8/21
1	Issued for First Submission	May 4/21

Revision		CONSULTANTS	
ARCHITECT	RODRICK LANEY ARCHITECTS INC. 34 BEECH STREET, OTTAWA, ON K1S 3M4	ENGINEER	DAVID SCHIFFER ENGINEERING LTD. 120 RIVER RD, SUITE 103, OTTAWA, ON K2S 1E9
SURVEYOR	J.D. BARNES LTD. 15340 LAKEVIEW ROAD, OTTAWA, ON K1B 3N3	OWNER	RICH CRAFT HOMES 2280 ST. LAURENT BLVD, SUITE 201, OTTAWA, ON K1G 4K1
PLANNING	POTTERY PLANNING + DESIGN 203 HOCKESSY STREET, OTTAWA, ON K2P 0B3		



NAK
design strategies

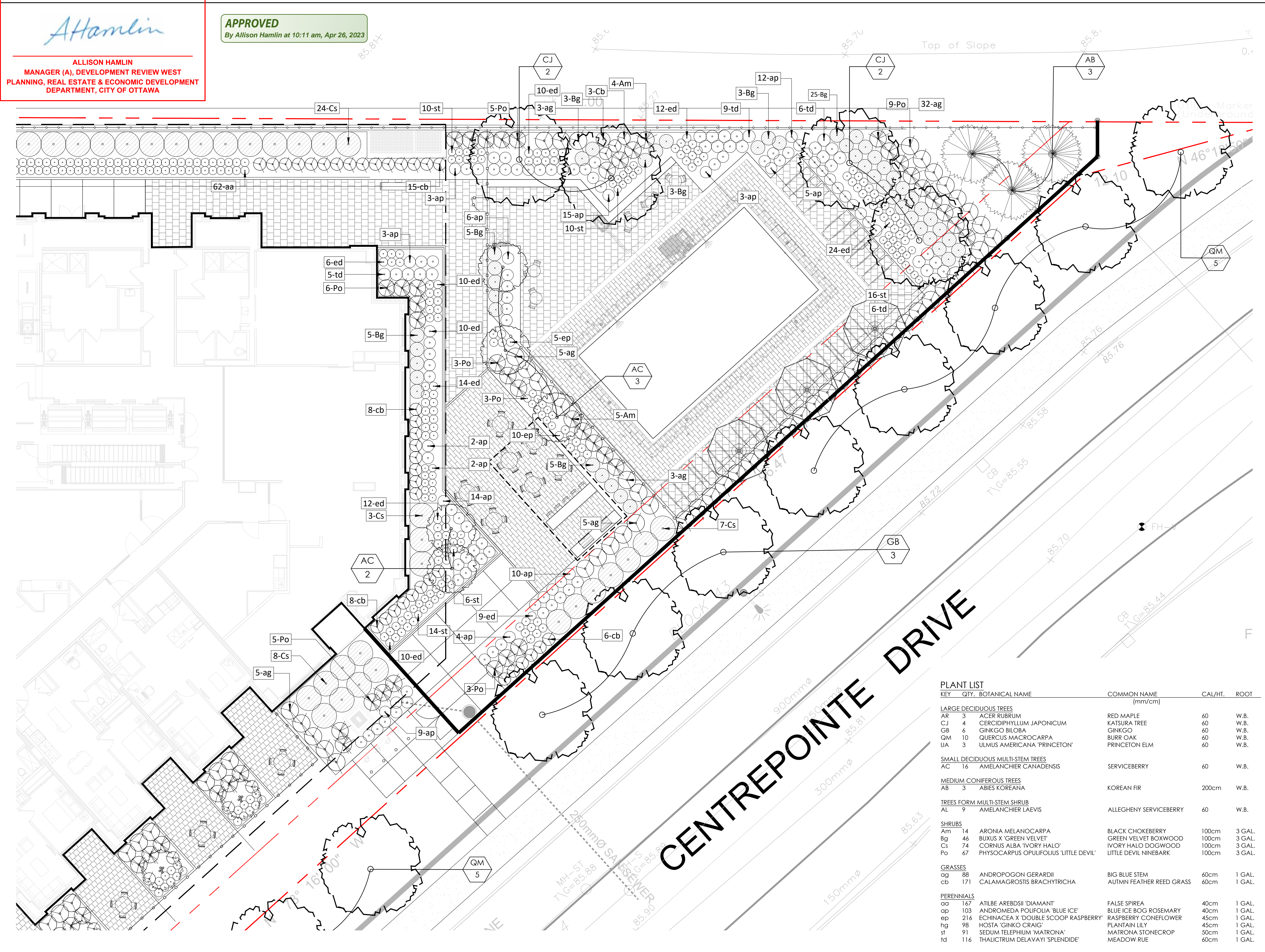
1285 WELLINGTON STREET WEST, OTTAWA, ON K1J 3A8 CANADA
T 613.237.2345 F 613.237.6423 NAKDESIGNSTRATEGIES.COM

19 CENTREPOINTE DRIVE
OTTAWA, ONTARIO

Title

GROUND FLOOR AMENITY
PLANTING PLAN

Date	December 2022	Sheet	
Scale	1:100		
Drawn	AM / PG		
Checked	JS		
Job No.	20-039		



KEY	QTY.	BOTANICAL NAME	COMMON NAME (mm/cm)	CAL/HT.	ROOT
LARGE DECIDUOUS TREES					
AR	3	ACER RUBRUM	RED MAPLE	60	W.B.
CJ	4	CERCIDIPHYLLUM JAPONICUM	KATSURA TREE	60	W.B.
CB	6	GINKGO BILOBA	GINKGO	60	W.B.
QM	10	QUERCUS MACROCARPA	BURR OAK	60	W.B.
UA	3	ULMUS AMERICANA 'PRINCETON'	PRINCETON ELM	60	W.B.
SMALL DECIDUOUS MULTI-STEM TREES					
AC	16	AMELANCHIER CANADENSIS	SERVICEBERRY	60	W.B.
MEDIUM CONIFEROUS TREES					
AB	3	ABIES KOREANA	KOREAN FIR	200cm	W.B.
TREES FORM MULTI-STEM SHRUB					
AL	9	AMELANCHIER LAEVIS	ALLEGHENY SERVICEBERRY	60	W.B.
SHRUBS					
Am	14	ARONIA MELANOCARPA	BLACK CHOKEBERRY	100cm	3 GAL.
Bg	46	BUXUS X 'GREEN VELVET'	GREEN VELVET BOXWOOD	100cm	3 GAL.
Cs	74	CORNUS ALBA 'IVORY HALO'	IVORY HALO DOGWOOD	100cm	3 GAL.
Po	67	PHYSOCARPUS OPULIFOLIUS 'LITTLE DEVIL'	LITTLE DEVIL NINEBARK	100cm	3 GAL.
GRASSES					
og	88	ANDROPOGON GERARDII	BIG BLUE STEM	60cm	1 GAL.
cb	171	CALAMAGOSTIS BRACHYTRICHA	AUTUMN FEATHER REED GRASS	60cm	1 GAL.
PERENNIALS					
aa	167	ATILE AREBDSII 'DIAMANT'	FALSE SPIREA	40cm	1 GAL.
ap	103	ANDROMEDA POLIFOLIA 'BLUE ICE'	BLUE ICE BOG ROSEMARY	40cm	1 GAL.
ep	216	ECHINACEA X 'DOUBLE SCOOP' RASPBERRY	RASPBERRY CONEFLOWER	45cm	1 GAL.
hg	98	HOSTA 'GINKO CRAIG'	PLANTAIN LILY	45cm	1 GAL.
sf	91	SEDUM TELEPHIUM 'MATRONA'	MATRONA STONECROP	50cm	1 GAL.
td	116	THALICTRUM DELAVAYI 'SPLENDEDE'	MEADOW RUE	60cm	1 GAL.

Hamlin

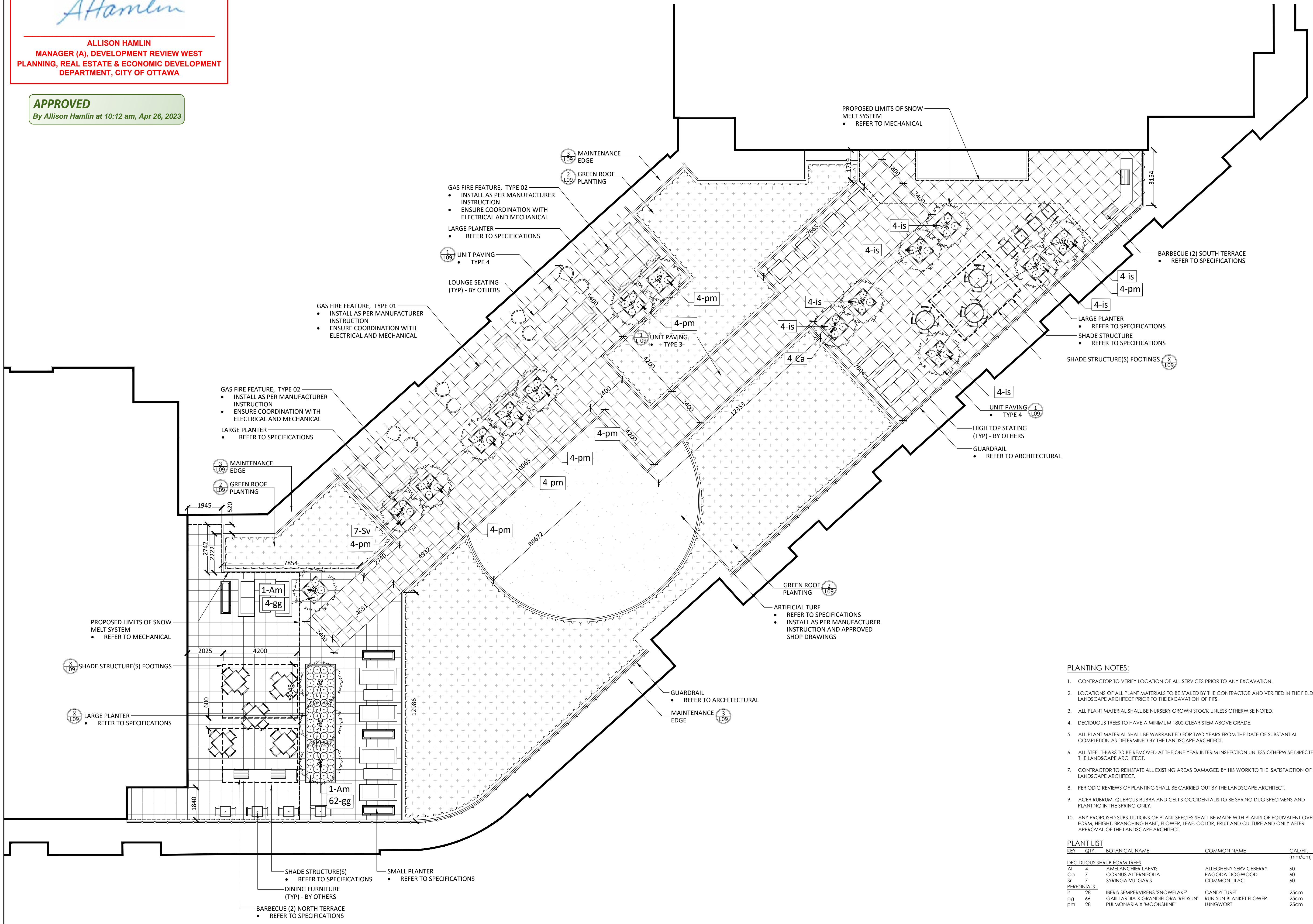
ALLISON HAMLIN
MANAGER (A), DEVELOPMENT REVIEW WEST
PLANNING, REAL ESTATE & ECONOMIC DEVELOPMENT
DEPARTMENT, CITY OF OTTAWA

APPROVED
By Allison Hamlin at 10:12 am, Apr 26, 2023

Contractor shall check all dimensions on the work and report any discrepancy to the Landscape Architect before proceeding. All drawings and specifications are the property of the Landscape Architect and must be returned at the completion of the work. This drawing is not to be used for construction until signed by the Landscape Architect.

Client:

.....\Files\2023 - Green Roof\2023\2023-04-26-10-12-18.png



PLANTING NOTES:

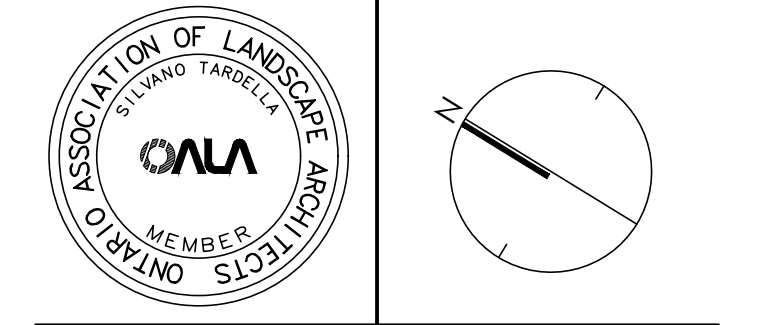
- CONTRACTOR TO VERIFY LOCATION OF ALL SERVICES PRIOR TO ANY EXCAVATION.
- LOCATIONS OF ALL PLANT MATERIALS TO BE STAKED BY THE CONTRACTOR AND VERIFIED IN THE FIELD BY LANDSCAPE ARCHITECT PRIOR TO THE EXCAVATION OF PITS.
- ALL PLANT MATERIAL SHALL BE NURSERY GROWN STOCK UNLESS OTHERWISE NOTED.
- DECIDUOUS TREES TO HAVE A MINIMUM 1800 CLEAR STEM ABOVE GRADE.
- ALL PLANT MATERIAL SHALL BE WARRANTED FOR TWO YEARS FROM THE DATE OF SUBSTANTIAL COMPLETION AS DETERMINED BY THE LANDSCAPE ARCHITECT.
- ALL STEEL T-BARS TO BE REMOVED AT THE ONE YEAR INTERIM INSPECTION UNLESS OTHERWISE DIRECTED BY THE LANDSCAPE ARCHITECT.
- CONTRACTOR TO REINSTATE ALL EXISTING AREAS DAMAGED BY HIS WORK TO THE SATISFACTION OF THE LANDSCAPE ARCHITECT.
- PERIODIC REVIEWS OF PLANTING SHALL BE CARRIED OUT BY THE LANDSCAPE ARCHITECT.
- ACER RUBRUM, QUERCUS RUBRA AND CELTIS OCCIDENTALIS TO BE SPRING DUG SPECIMENS AND PLANTING IN THE SPRING ONLY.
- ANY PROPOSED SUBSTITUTIONS OF PLANT SPECIES SHALL BE MADE WITH PLANTS OF EQUIVALENT OVERALL FORM, HEIGHT, BRANCHING HABIT, FLOWER, LEAF, COLOR, FRUIT AND CULTURE AND ONLY AFTER APPROVAL OF THE LANDSCAPE ARCHITECT.

PLANT LIST

KEY	QTY	BOTANICAL NAME	COMMON NAME	CAL./HT.	ROOT
DECIDUOUS SHRUB FORM TREES					
Al	4	AMELANGHERIA LAEVIS	ALLEGHENY SERVICEBERRY	60	W.B.
Ca	7	CORNUS ALTERNIFOLIA	PAGODA DOGWOOD	60	W.B.
Sr	7	SYRINGA VULGARIS	COMMON LILAC	60	W.B.
PERENNIALS					
is	28	IBERIS SEMPERVIRENS 'SNOWFLAKE'	CANDY TURF	25cm	1 GAL.
gg	66	GAILLARDIA X GRANDIFLORA 'REDSUN'	RUN SUN BLANKET FLOWER	25cm	1 GAL.
pm	28	PULMONARIA X 'MOONSHINE'	LUNGWORT	25cm	1 GAL.

No.	Description	Date
11	Issued for City Review	Apr 4/23
10	Issued for Building Permit	Dec 16/22
9	Issued for 60% Review	Oct 20/22
8	Issued for Foundation Permit	Oct 14/22
7	Progress Submission	Sept 16/22
6	Issued for Planting Review	May 30/22
5	Issued for Review	May 26/22
4	Re-issued for Third Submission	Feb 25/22
3	Issued for Third Submission	Jan 12/22
2	Issued for Second Submission	Sept 8/21
1	Issued for First Submission	May 4/21

CONSULTANTS	
ARCHITECT	ROSEBERG LAMBY ARCHITECTS INC. 56 BEECH STREET, OTTAWA, ON K1S 3A6
ENGINEER	DAVID SCHNEIFER ENGINEERING LTD. 120 BAY ST. SUITE 100, OTTAWA, ON K2E 1G9
SURVEYOR	20 BANNER LTD. 15-3450 LAKECASTLE ROAD, OTTAWA, ON K1B 5K0
OWNER	RICH CRAFT HOMES 2300 ST. LAWRENCE BLVD. SUITE 301, OTTAWA, ON K1G 4K1
PLANNING	POTEMKIN PLANNING + DESIGN 220 WILLOUGHBY STREET, OTTAWA ON K2P 0Z8



NAK
design strategies
1285 WELLINGTON STREET WEST, OTTAWA, ON K1Y 3A8 CANADA
T 613.237.2345 F 613.237.6423 NAKDESIGNSTRATEGIES.COM

Project
19 CENTREPOINTE DRIVE
OTTAWA, ONTARIO

Title
ROOF TERRACE

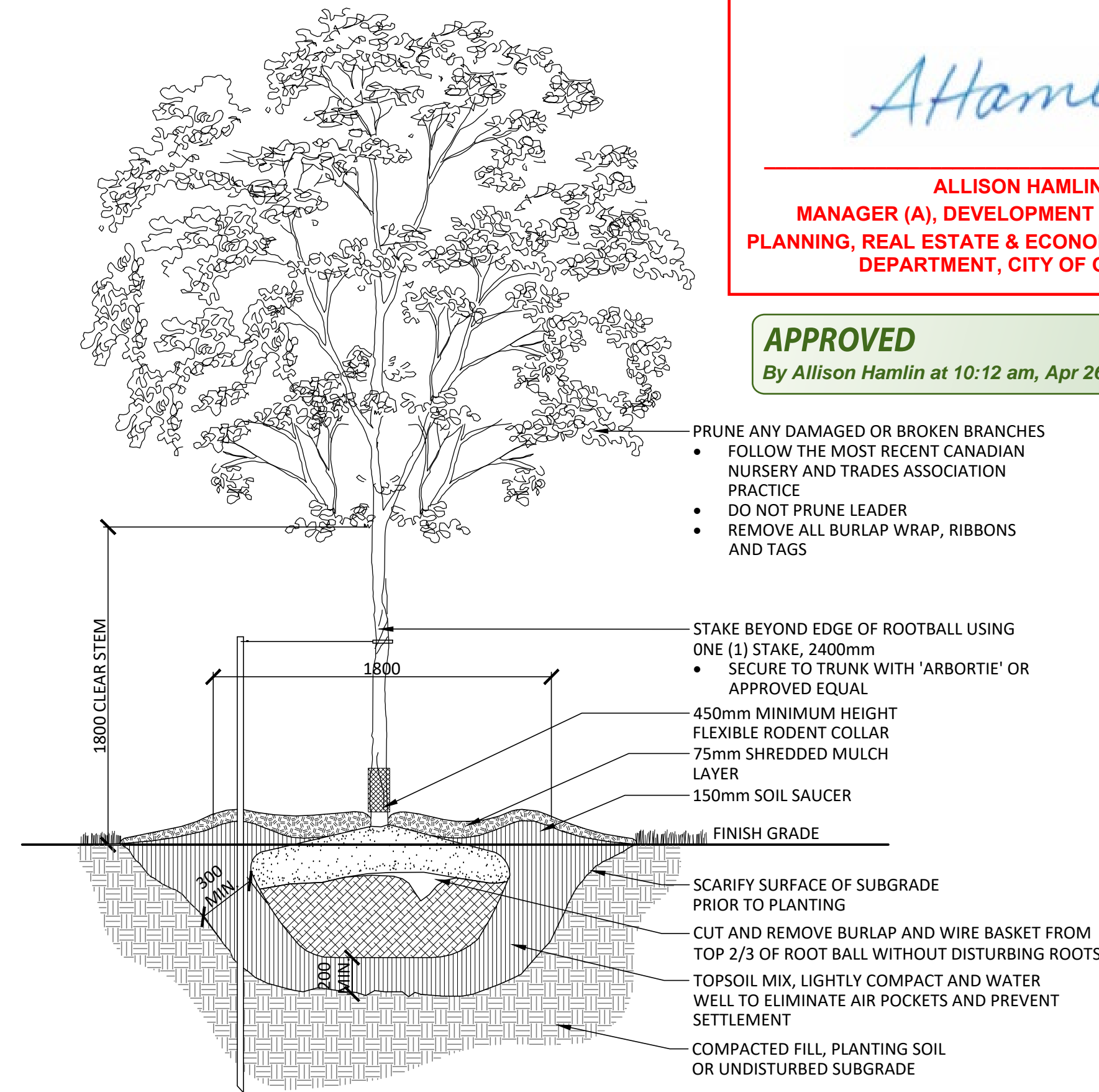
Date April 07, 2021 Sheet
Scale 1:100
Drawn AM / SC
Checked JSC
Job No. 20-039

L-06

AtHamlin

ALLISON HAMLIN
MANAGER (A), DEVELOPMENT REVIEW WEST
PLANNING, REAL ESTATE & ECONOMIC DEVELOPMENT
DEPARTMENT, CITY OF OTTAWA

APPROVED
By Allison Hamlin at 10:12 am, Apr 26, 2023

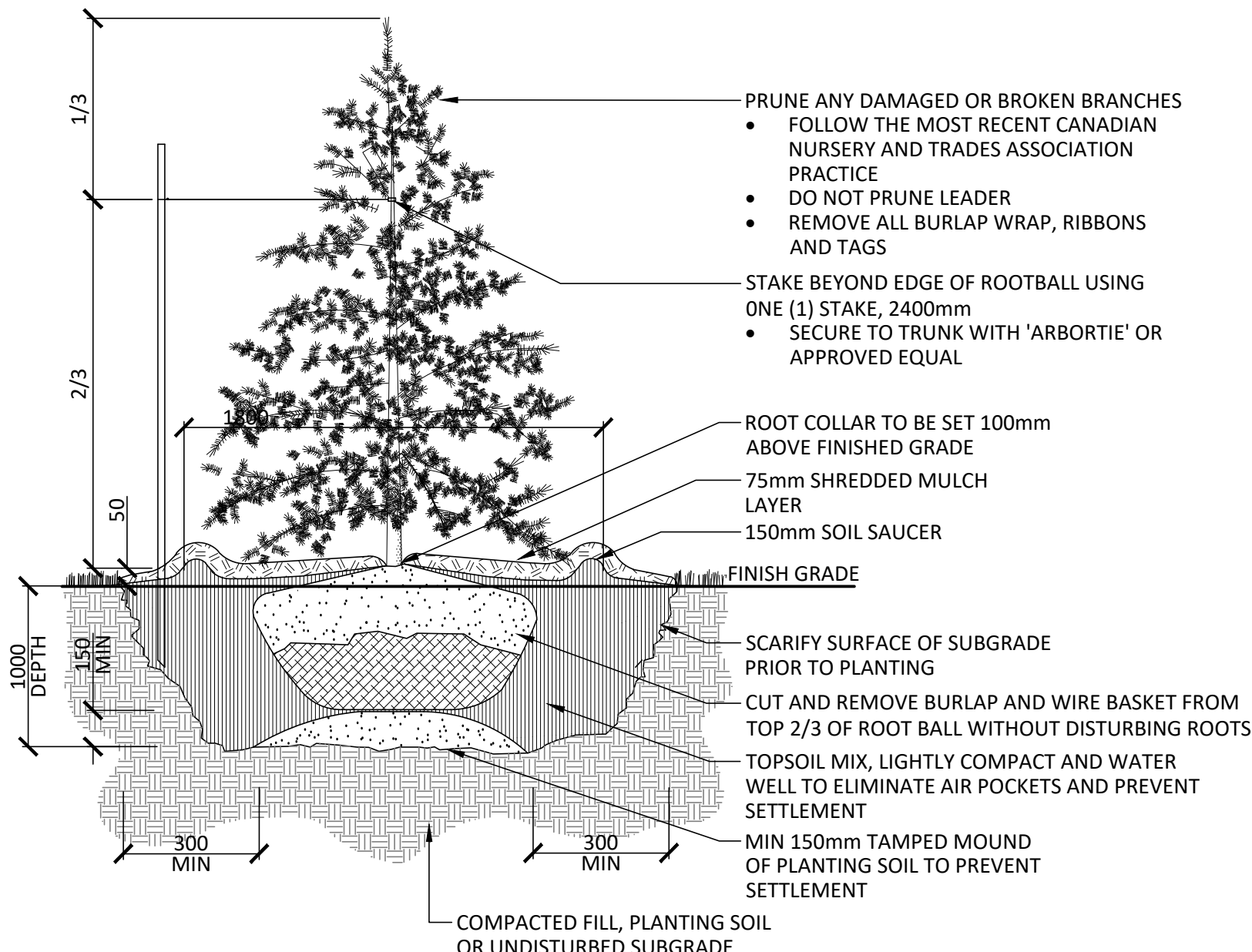


- PRUNE ANY DAMAGED OR BROKEN BRANCHES
- FOLLOW THE MOST RECENT CANADIAN NURSERY AND TRADES ASSOCIATION PRACTICE
 - DO NOT PRUNE LEADER
 - REMOVE ALL BURLAP WRAP, RIBBONS AND TAGS

- STAKE BEYOND EDGE OF ROOTBALL USING ONE (1) STAKE, 2400mm
- SECURE TO TRUNK WITH 'ARBORTIE' OR APPROVED EQUAL

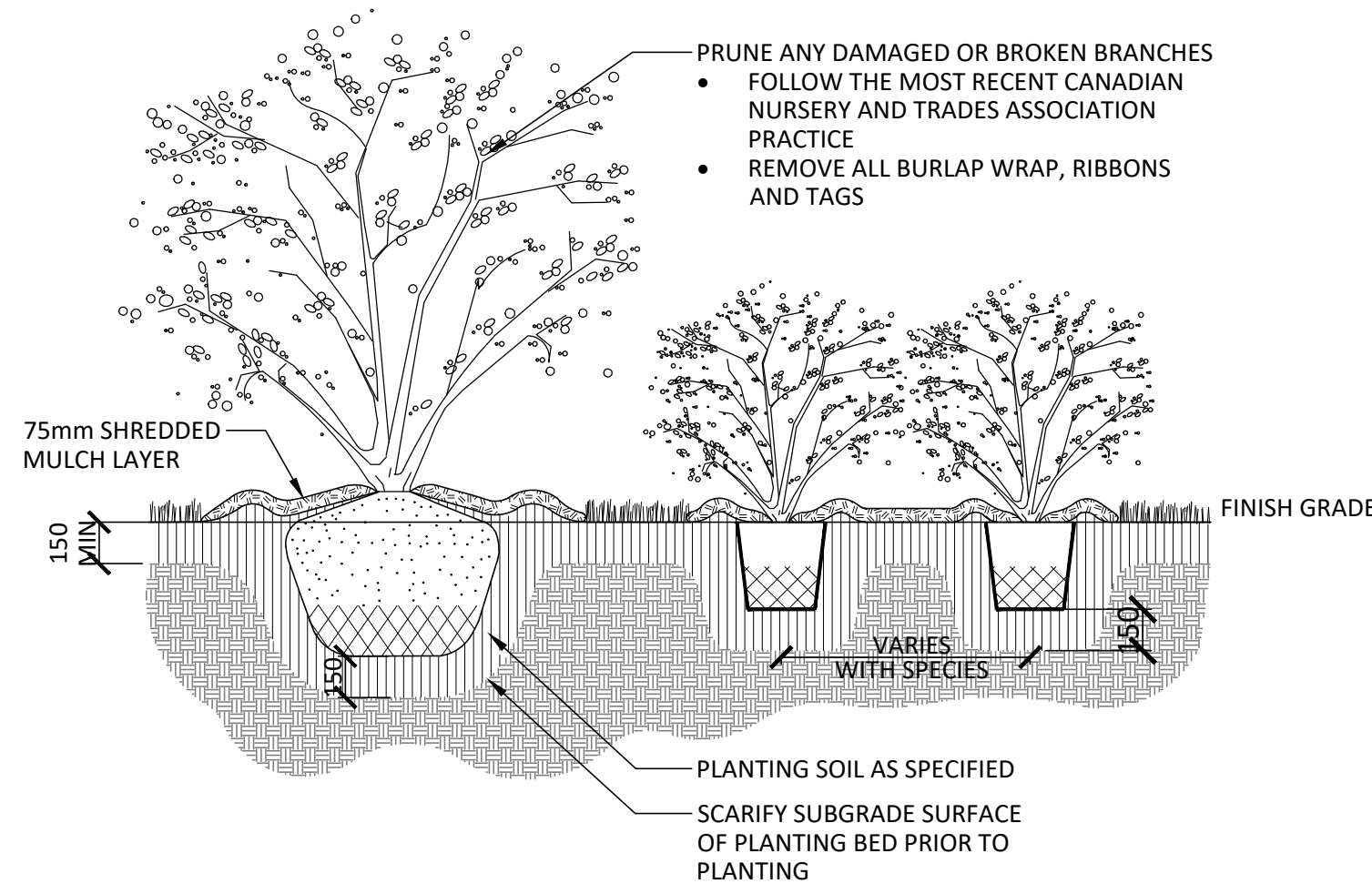
- NOTES:
- REMOVE STAKES AND RODENT GUARD AFTER ONE YEAR OR UNTIL TAKEOVER, UNLESS OTHERWISE DIRECTED BY THE LANDSCAPE ARCHITECT.
 - TOPSOIL MIXTURE AND SHREDDED MULCH AS PER SPECIFICATION
 - REMOVE TREE WRAP AFTER PLANTING
 - CALIPER TO BE MEASURED AT THE BASE OF TREE AT ROOT BALL

1 DECIDUOUS TREE PLANTING
1:25



- NOTES:
- REMOVE STAKES AFTER ONE YEAR OR UNTIL TAKEOVER UNLESS OTHERWISE DIRECTED BY THE LANDSCAPE ARCHITECT.
 - TOPSOIL MIXTURE AND SHREDDED MULCH AS PER SPECIFICATION

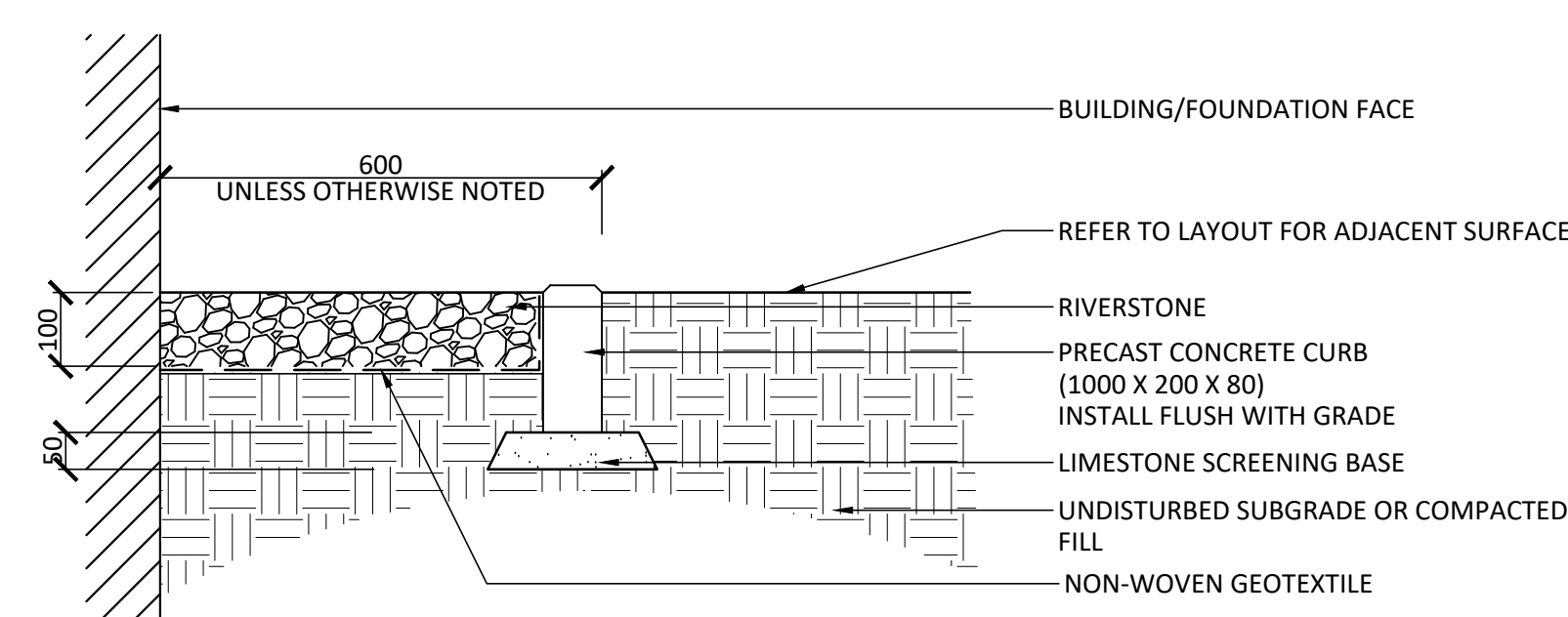
2 CONIFEROUS TREE PLANTING
1:25



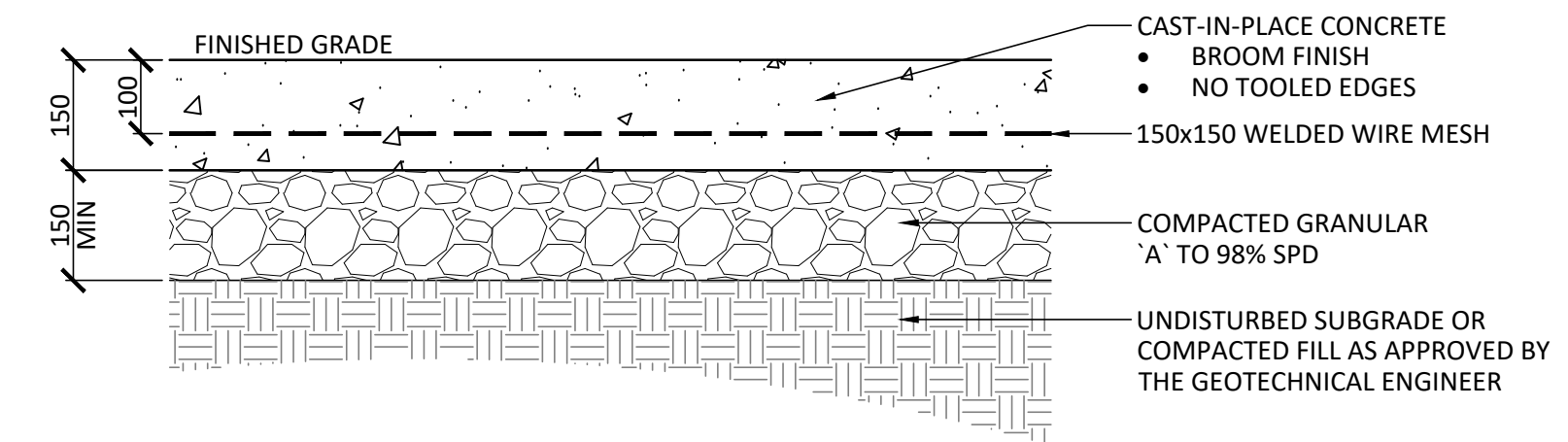
- PRUNE ANY DAMAGED OR BROKEN BRANCHES
- FOLLOW THE MOST RECENT CANADIAN NURSERY AND TRADES ASSOCIATION PRACTICE
 - REMOVE ALL BURLAP WRAP, RIBBONS AND TAGS

- NOTES:
- SHRUBS SPECIFIED TO BE PLANTED SO THAT ROOTS ARE FULLY EXTENDED IN PLANTING HOLE WITH SOIL MIX BACKFILLED CAREFULLY TO PREVENT ROOT DAMAGE
 - PROVIDE 100mm HIGH EARTH SAUCER AROUND SHRUB BED

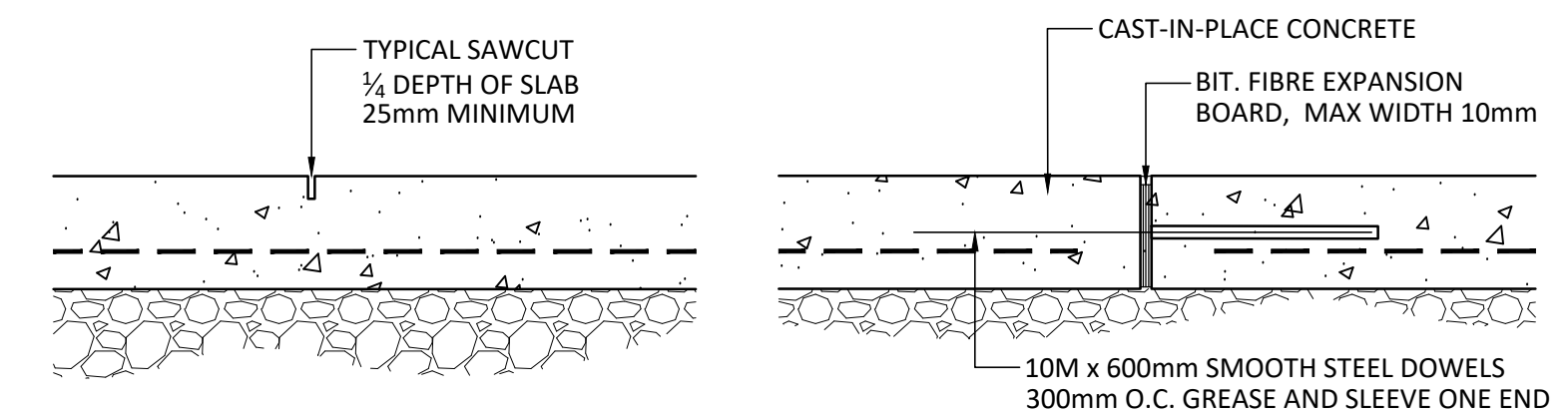
3 SHRUB PLANTING
1:25



4 MAINTENANCE EDGE
1:20



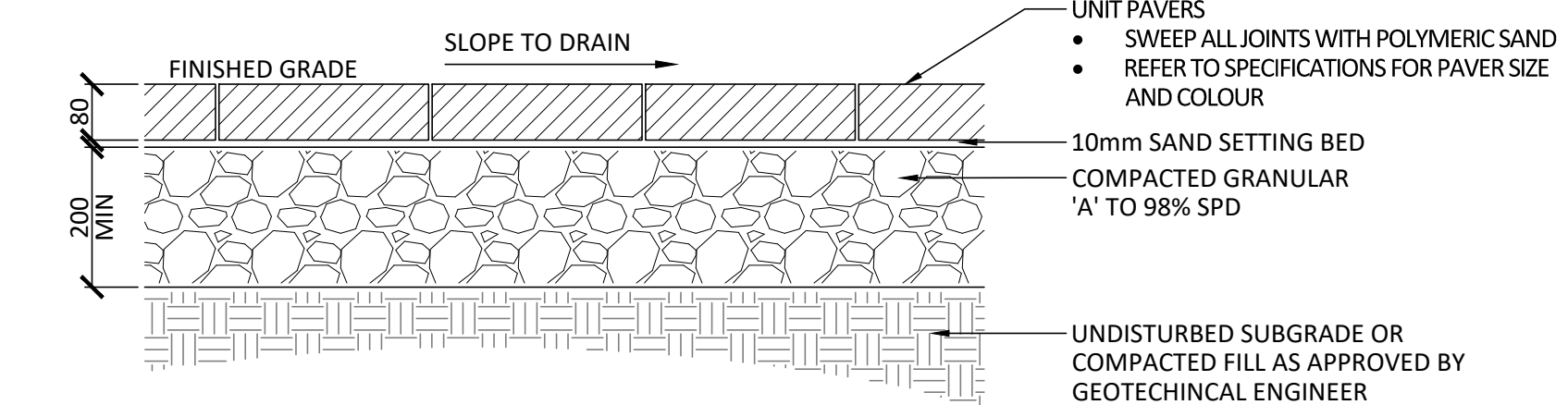
5 PEDESTRIAN CONCRETE PAVING
1:10



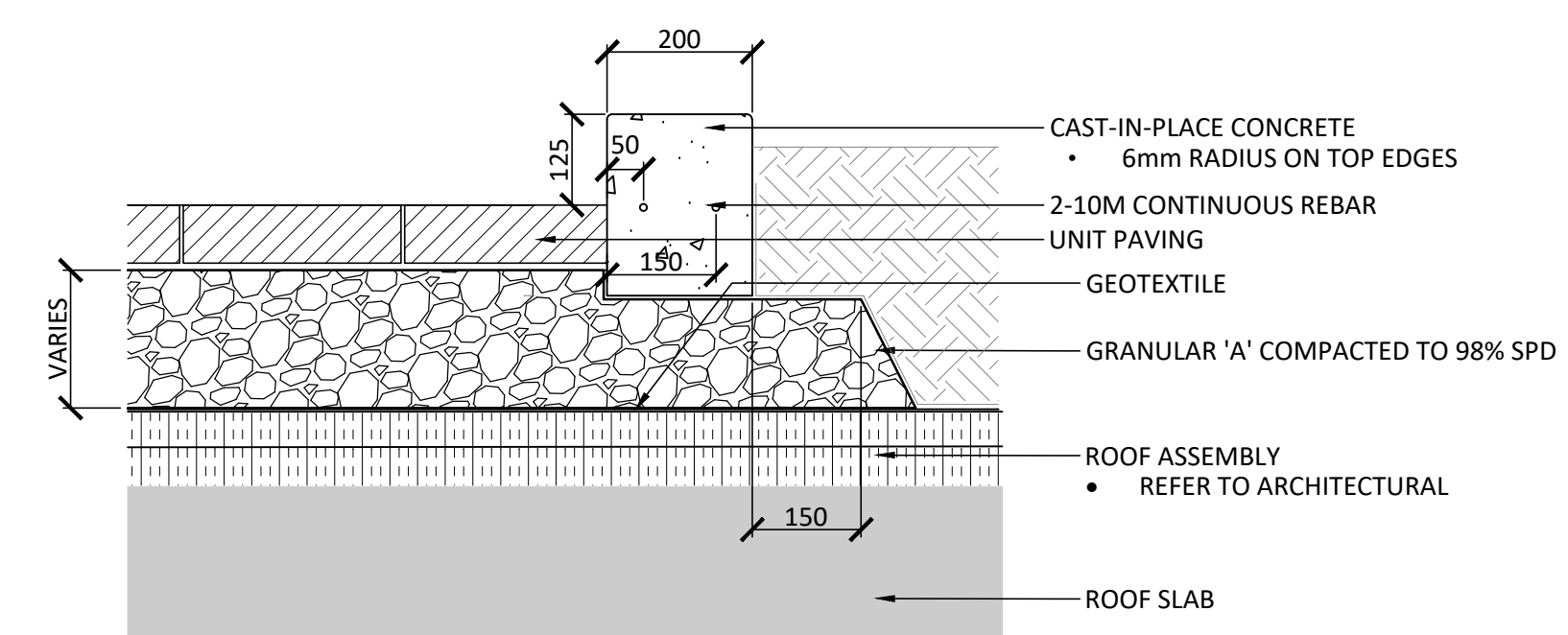
- NOTES:
- REFER TO DRAWINGS FOR JOINT LAYOUT
 - SAWCUT WITHIN 48 HOURS OF POUR
 - NO TOOLED EDGES

- NOTES:
- REFER TO DRAWINGS FOR JOINT LAYOUT
 - NO TOOLED EDGES
 - NO CAULKED JOINTS

6 CONCRETE JOINTING
1:10



7 UNIT PAVING
1:10



8 CONCRETE PLANTER CURB
1:20

Contractor shall check all dimensions on the work and report any discrepancy to the Landscape Architect before proceeding. All drawings and specifications are the property of the Landscape Architect and must be returned at the completion of the work. This drawing is not to be used for construction until signed by the Landscape Architect.

Client:



No.	Description	Date
9	Issued for City Review	Apr 4/23
8	Issued for Coordination	Mar 10/23
7	Issued for Building Permit	Dec 16/22
6	Issued for 60% Review	Oct 20/22
5	Progress Submission	Sept 16/22
4	Re-issued for Third Submission	Feb 25/22
3	Issued for Third Submission	Jan 12/22
2	Issued for Second Submission	Sept 8/21
1	Issued for First Submission	May 4/21

Revision



NAK design strategies

1285 WELLINGTON STREET WEST, OTTAWA, ON K1J 3A8 CANADA
T 613.237.2345 F 613.237.6423 NAKDESIGNSTRATEGIES.COM

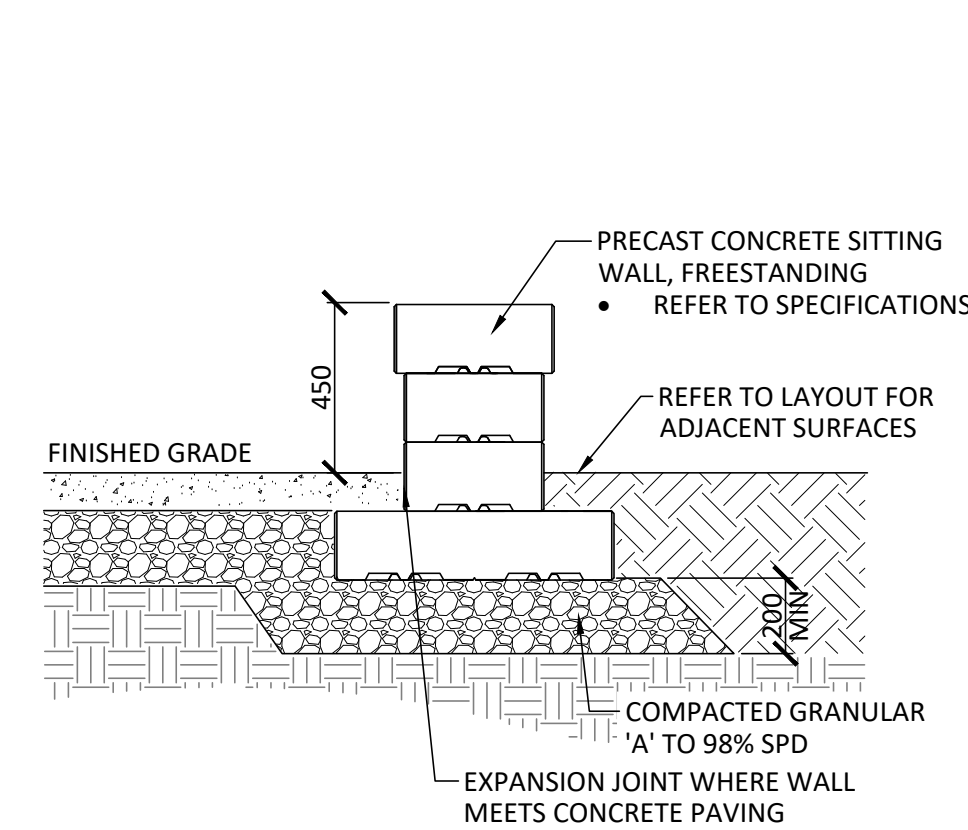
19 CENTREPOINTE DRIVE
OTTAWA, ONTARIO

GROUND FLOOR DETAILS

Date: December 2022
Scale: As Shown
Drawn: PG / SC
Checked: JSC
Job No.: 20-039

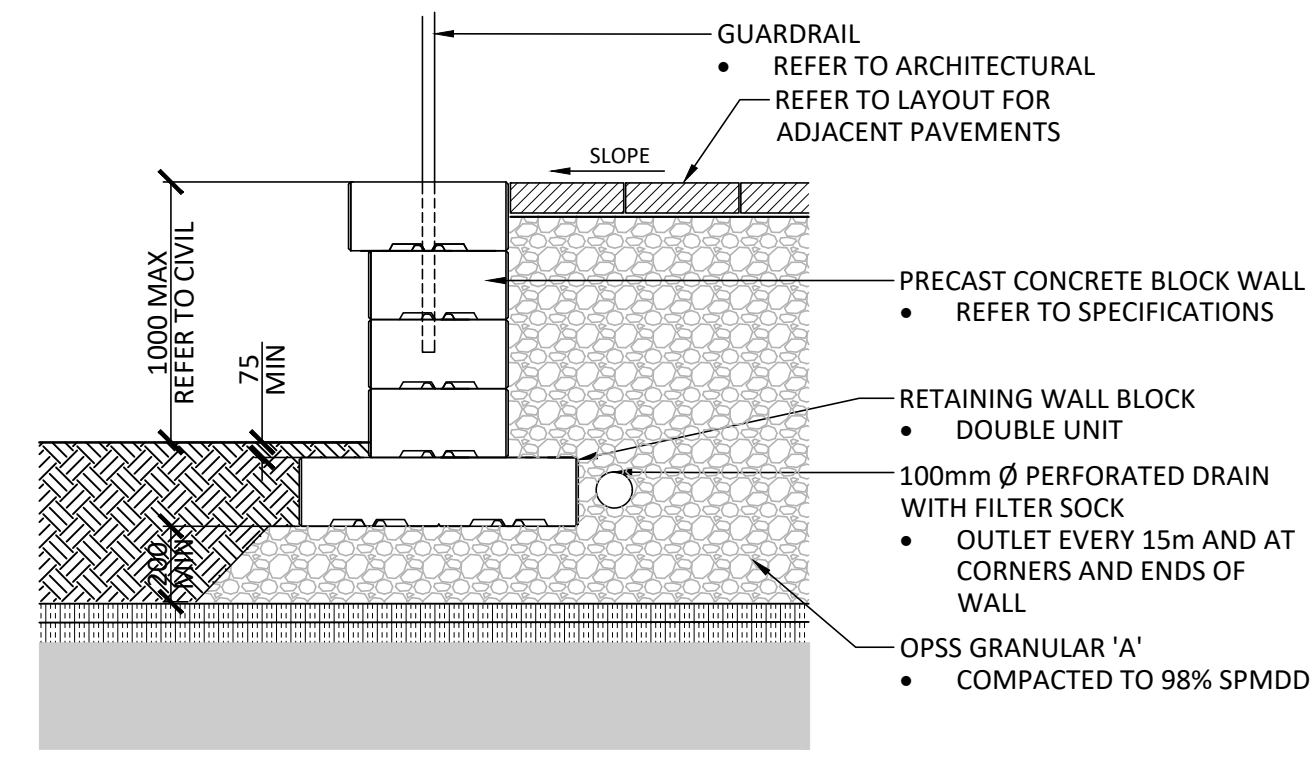
Sheet: L-07

Contractor shall check all dimensions on the work and report any discrepancy to the Landscape Architect before proceeding. All drawings and specifications are the property of the Landscape Architect and must be returned at the completion of the work. This drawing is not to be used for construction until signed by the Landscape Architect.



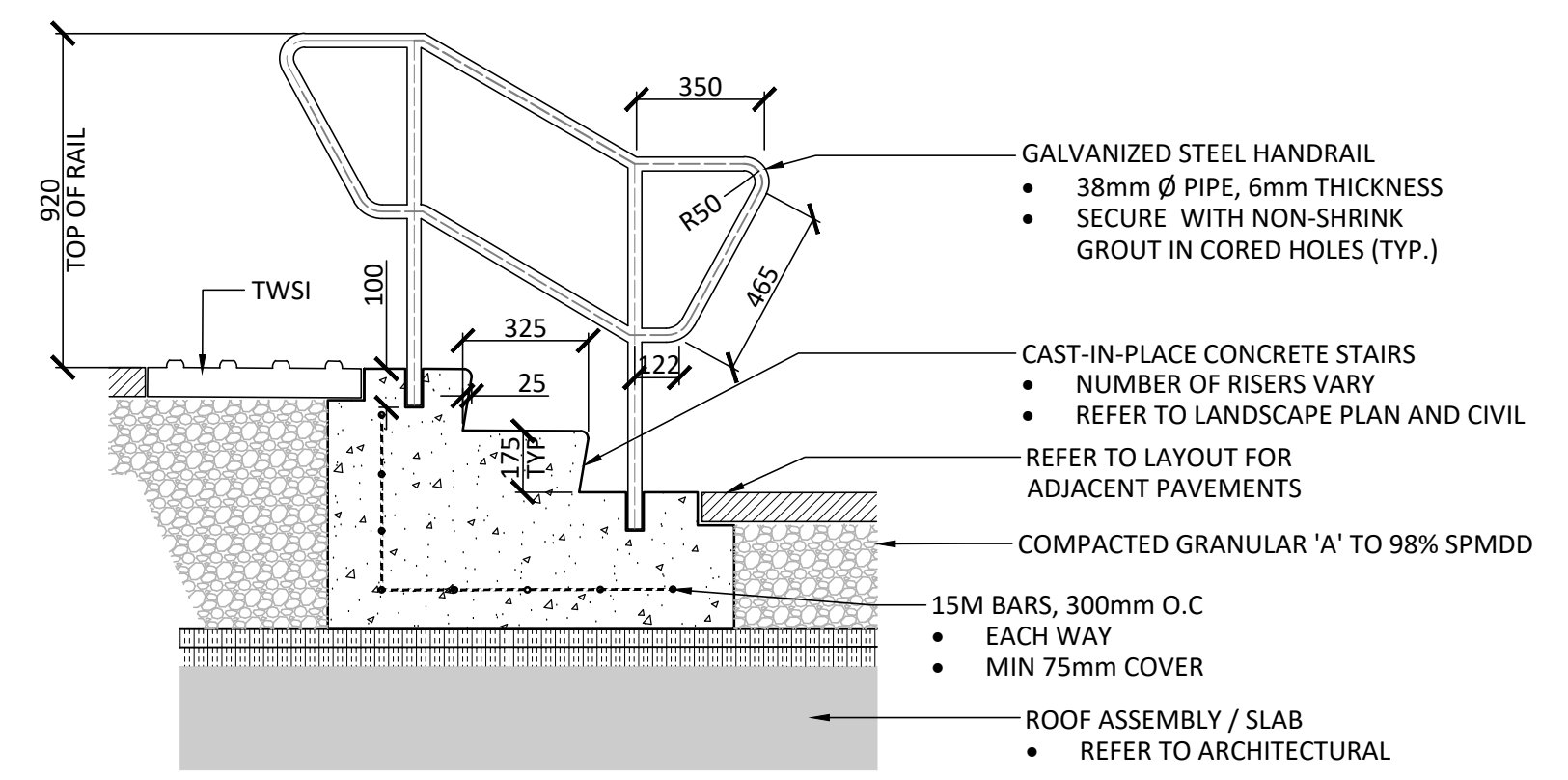
NOTES:
1. CONTRACTOR TO PROVIDE SHOP DRAWINGS FOR APPROVAL PRIOR TO INSTALLATION REFER TO SPECIFICATIONS

1 PRECAST CONCRETE SEATING WALL
1:20



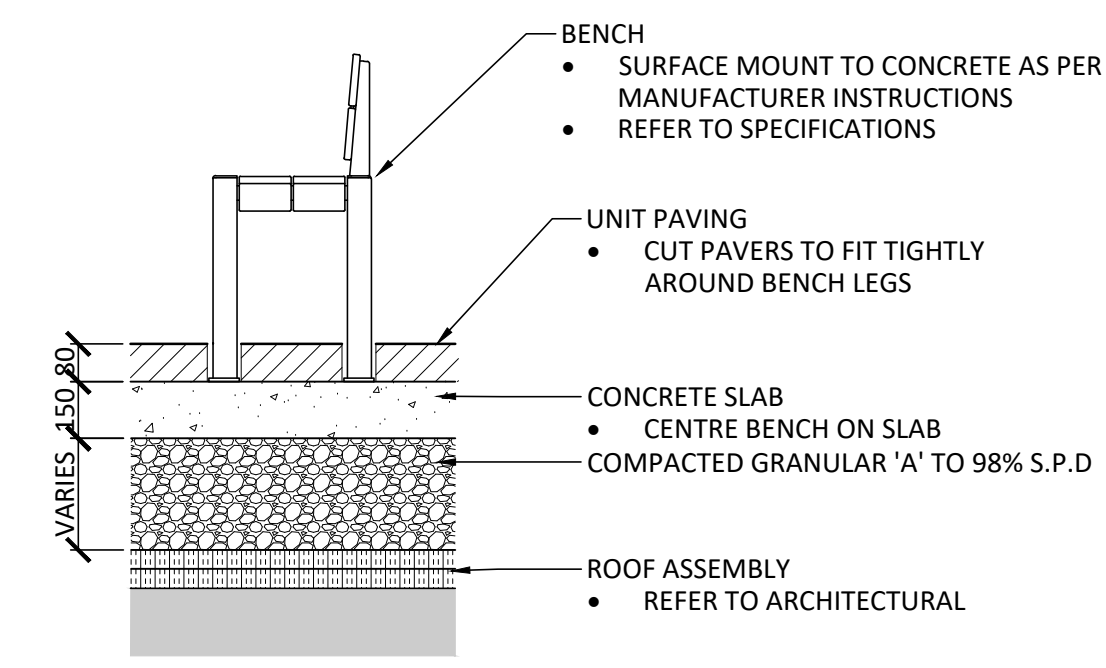
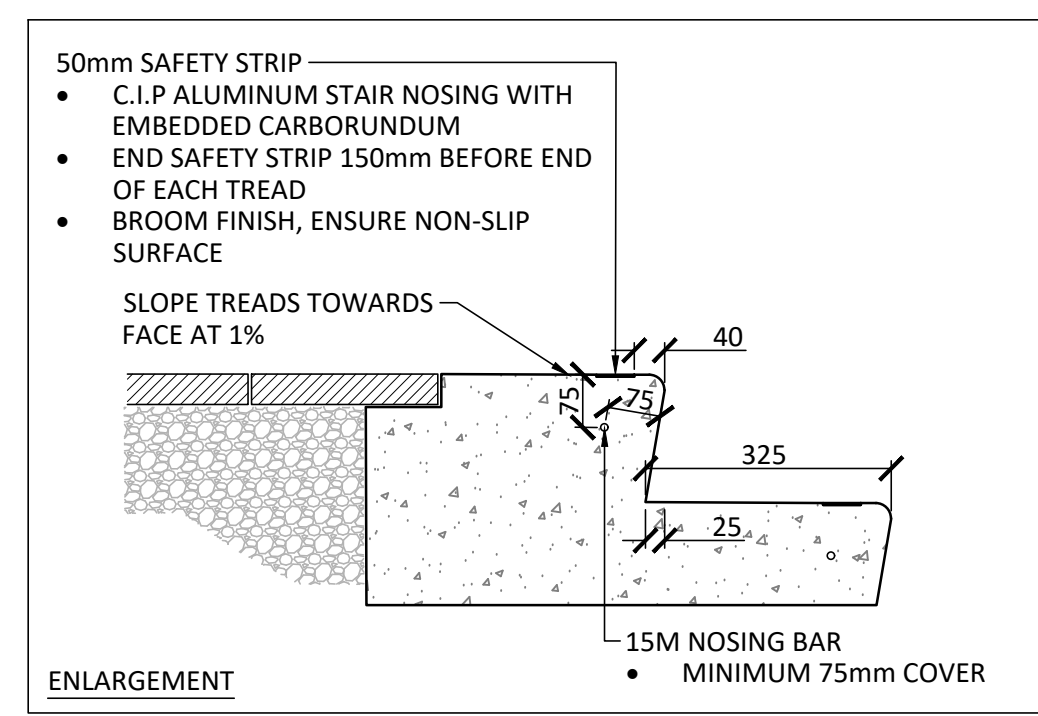
NOTES:
1. CONTRACTOR TO PROVIDE ENGINEER STAMPED SHOP DRAWINGS FOR APPROVAL PRIOR TO INSTALLATION

2 PRECAST CONCRETE RETAINING WALL
1:20

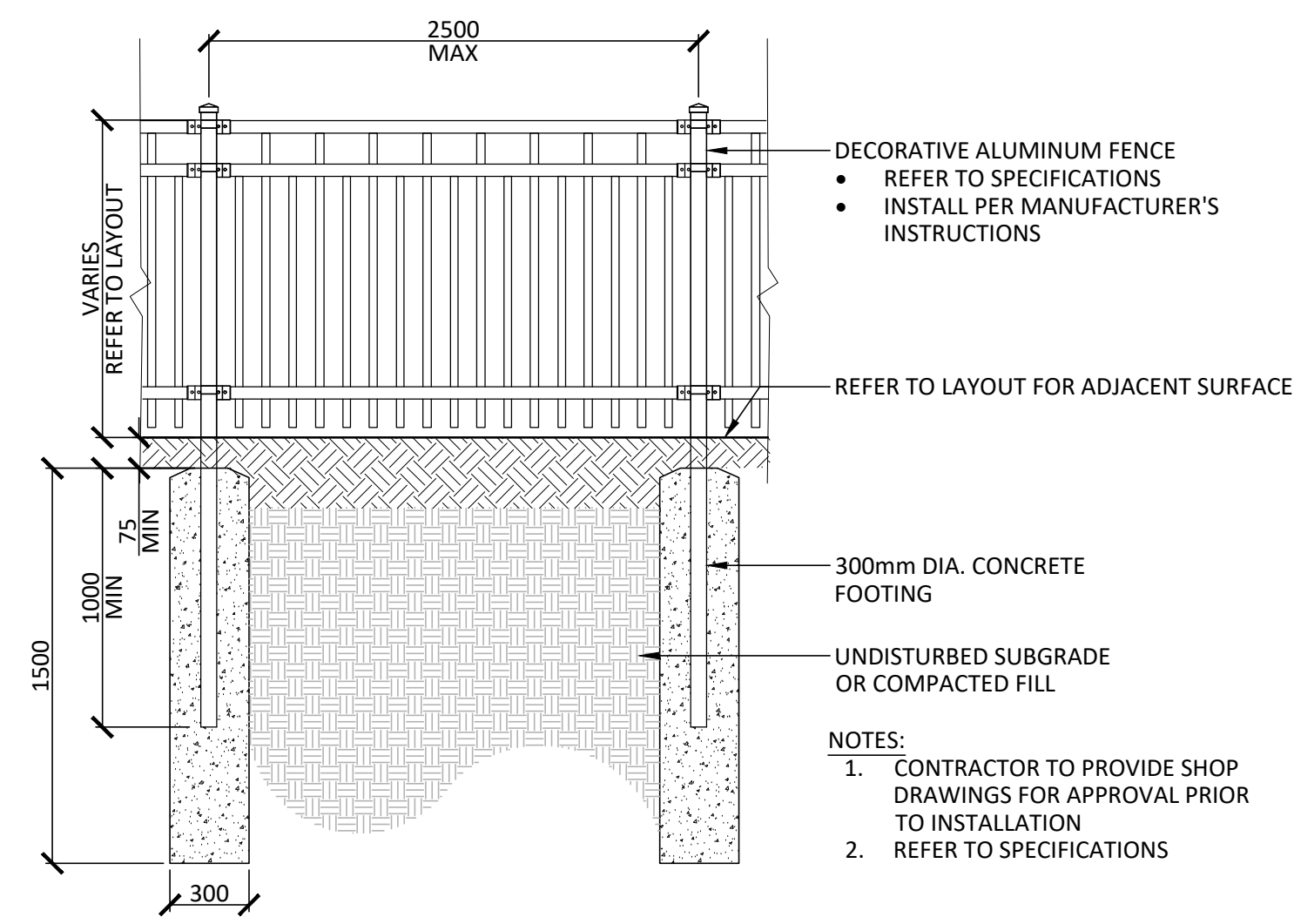


NOTES:
1. CONTRACTOR TO PROVIDE ENGINEER STAMPED SHOP DRAWINGS FOR APPROVAL PRIOR TO INSTALLATION

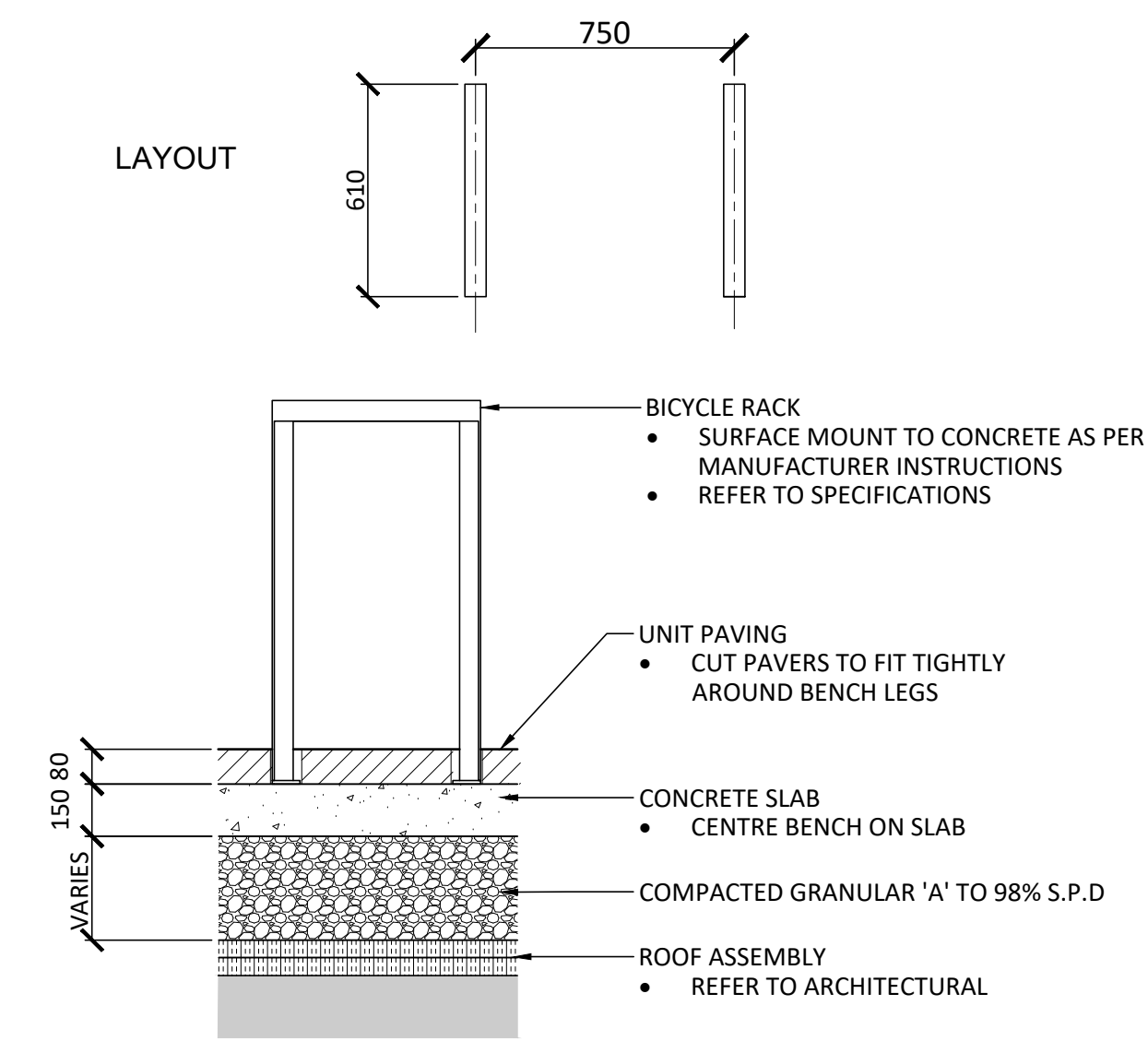
3 CAST IN PLACE CONCRETE STAIRS
1:20



4 BENCH
1:20



5 METAL FENCE
1:25

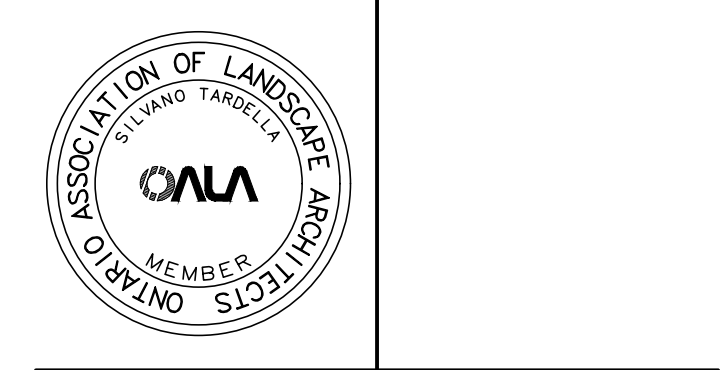


6 BIKE PARKING
1:20

APPROVED
By Allison Hamlin at 10:12 am, Apr 26, 2023

Allison Hamlin
ALLISON HAMLIN
MANAGER (A), DEVELOPMENT REVIEW WEST
PLANNING, REAL ESTATE & ECONOMIC DEVELOPMENT
DEPARTMENT, CITY OF OTTAWA

9	Issued for City Review	Apr 4/23
8	Issued for Coordination	Mar 10/23
7	Issued for Building Permit	Dec 16/22
6	Issued for 60% Review	Oct 20/22
5	Progress Submission	Sept 16/22
4	Re-issued for Third Submission	Feb 25/22
3	Issued for Third Submission	Jan 12/22
2	Issued for Second Submission	Sept 8/21
1	Issued for First Submission	May 4/21
No.	Description	Date
Revision		

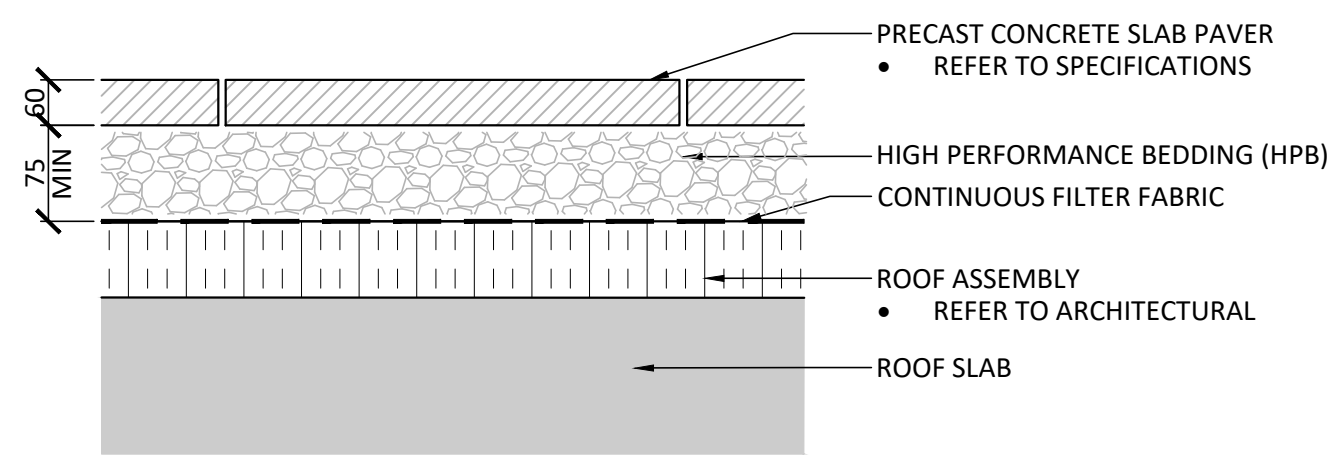


NAK
design strategies
1285 WELLINGTON STREET WEST, OTTAWA, ON K1Y 3A8 CANADA
T 613.237.2345 F 613.237.6423 NAKDESIGNSTRATEGIES.COM
Project

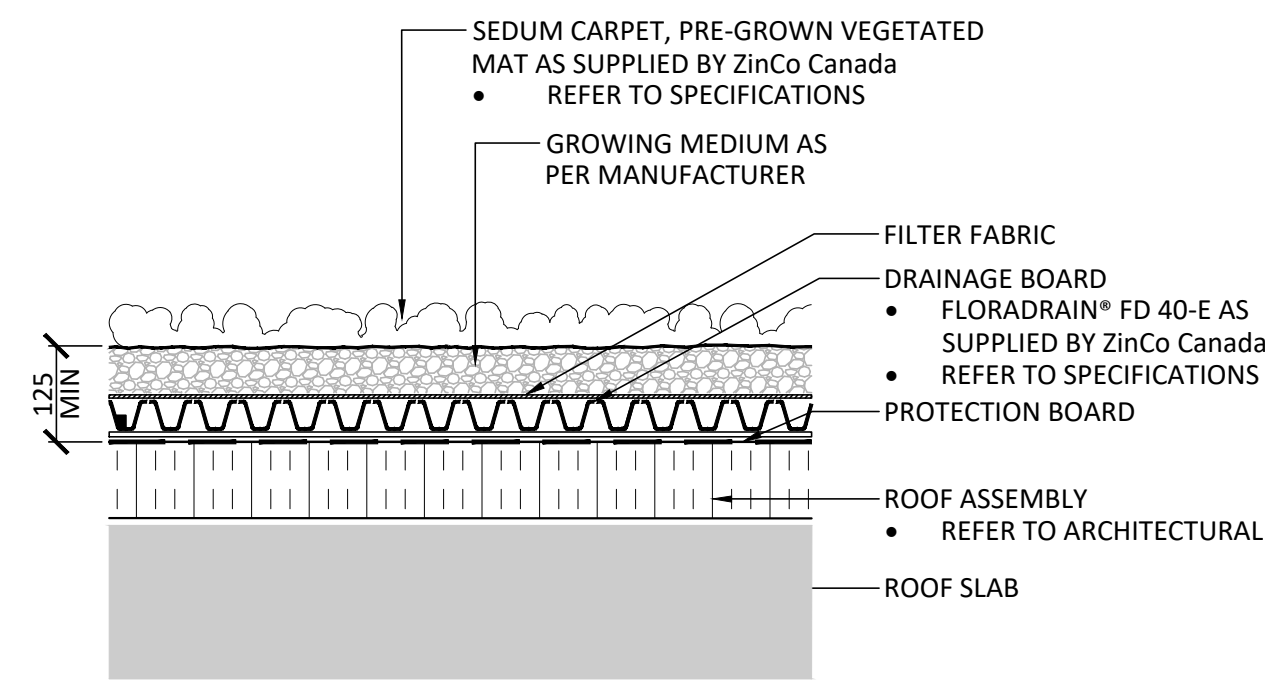
19 CENTREPOINTE DRIVE
OTTAWA, ONTARIO

Title
GROUNDFLOOR DETAILS

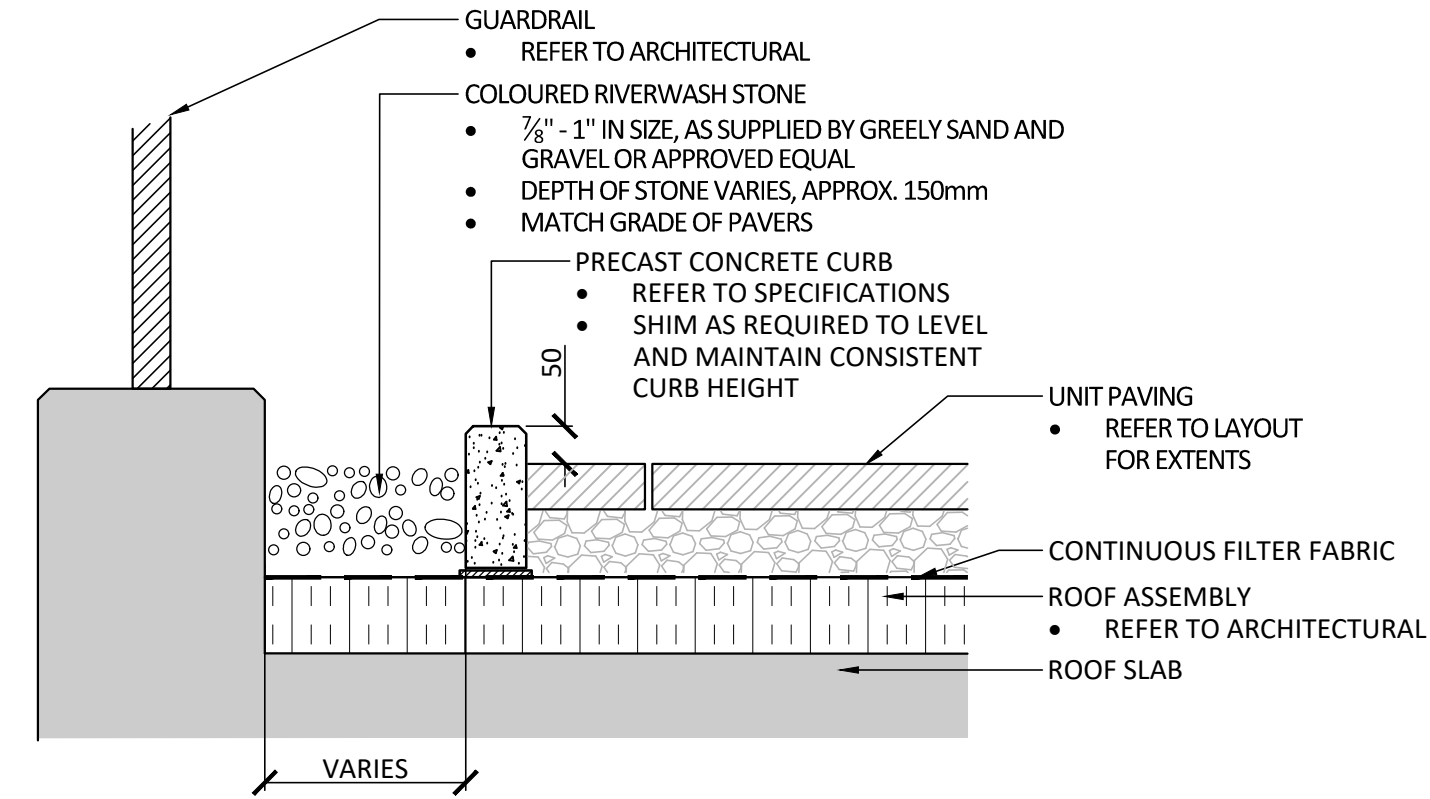
Date December 2022 Sheet
Scale AS SHOWN
Drawn PG / SC
Checked JSC
Job No. 20-039
L-08



1 UNIT PAVING
1:10



2 GREEN ROOF PLANTING
1:10

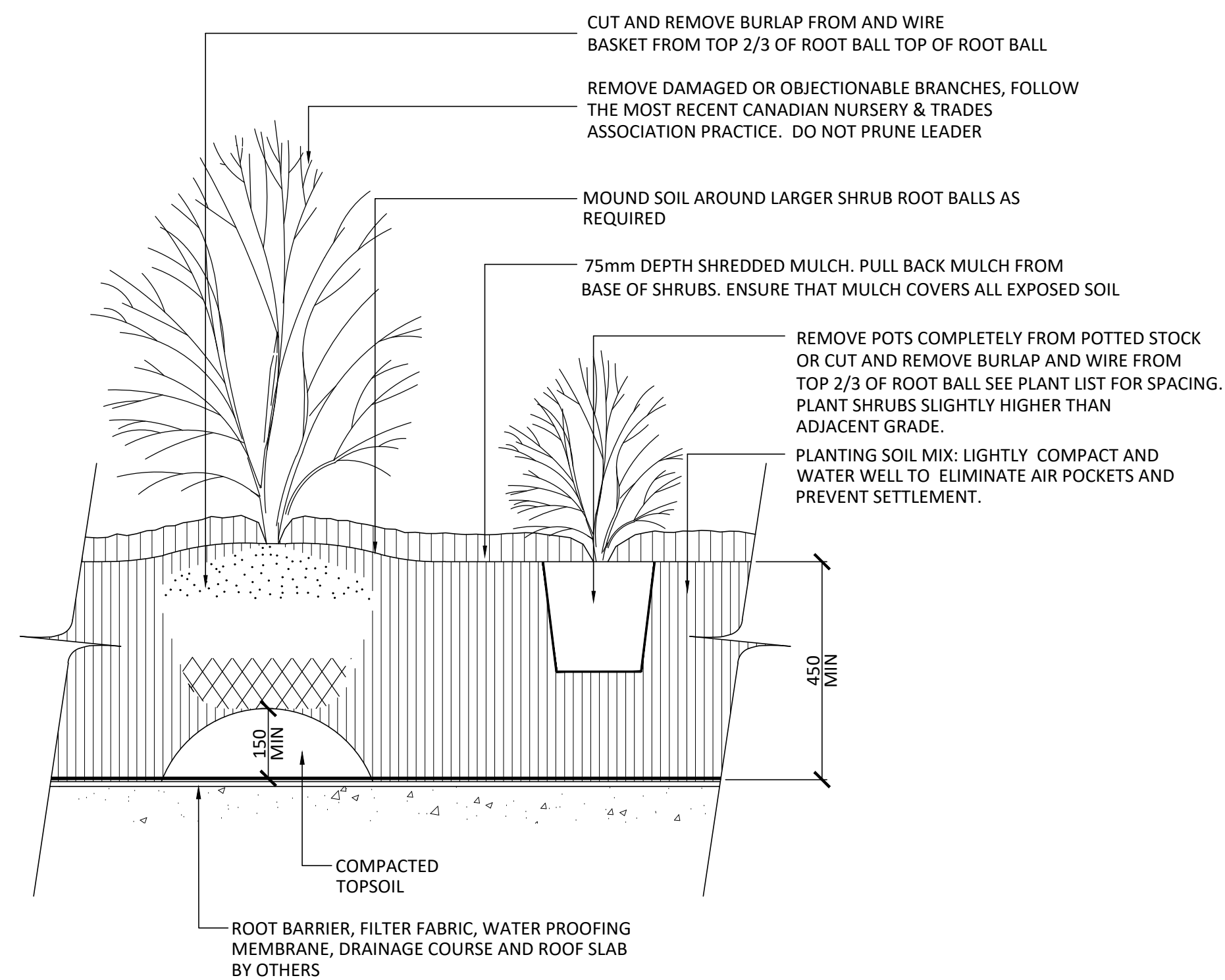


3 MAINTENANCE EDGE AT THE GUARDRAIL
1:10

Allison Hamlin

ALLISON HAMLIN
MANAGER (A), DEVELOPMENT REVIEW WEST
PLANNING, REAL ESTATE & ECONOMIC DEVELOPMENT
DEPARTMENT, CITY OF OTTAWA

APPROVED
By Allison Hamlin at 10:12 am, Apr 26, 2023



CONDITION ON SLAB

- NOTES:**
1. TOPSOIL MIXTURE AND SHREDDED MULCH AS PER SPECIFICATION.
 2. SHRUBS SPECIFIED BARE ROOT (B.R.) TO BE PLANTED SO THAT ROOTS ARE FULLY EXTENDED IN PLANTING HOLE WITH SOIL MIX BACKFILLED CAREFULLY TO PREVENT ROOT DAMAGE.
 3. PROVIDE 100mm HIGH EARTH SAUCER AROUND SHRUB BED.
 4. PROVIDE 600mm DEPTH FOR LARGE MULTISTEM SPECIMEN SHRUBS AND 450mm DEPTH FOR ALL OTHER SHRUBS.
 5. STAKES TO BE REMOVED AFTER ONE YEAR OR UNTIL TAKEOVER UNLESS OTHERWISE DIRECTED BY LANDSCAPE ARCHITECT.

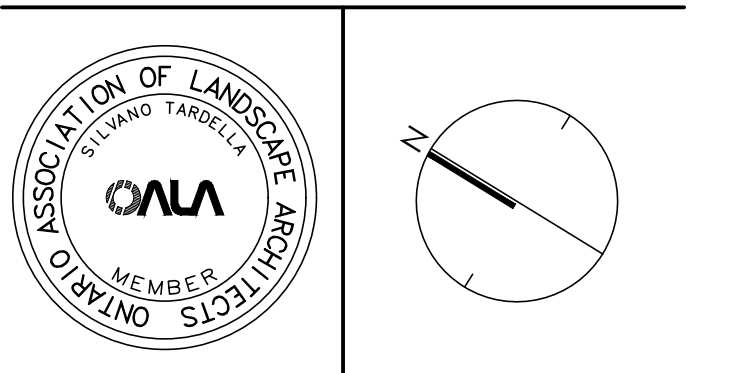
4 SHRUB AND PERENNIAL PLANTING OVER ROOF SLAB
1:10

Contractor shall check all dimensions on the work and report any discrepancy to the Landscape Architect before proceeding. All drawings and specifications are the property of the Landscape Architect and must be returned at the completion of the work. This drawing is not to be used for construction until signed by the Landscape Architect.

Client:
RICHCRAFT™
Group of Companies

No.	Description	Date
9	Issued for City Review	Apr 4/23
8	Issued for Coordination	Mar 10/23
7	Issued for Building Permit	Dec 16/22
6	Issued for 60% Review	Oct 20/22
5	Progress Submission	Sep 16/22
4	Re-issued for Third Submission	Feb 25/22
3	Issued for Third Submission	Jan 12/22
2	Issued for Second Submission	Sep 8/21
1	Issued for First Submission	May 4/21

Revision
City Approval Stamp



NAK
design strategies
1285 WELLINGTON STREET WEST, OTTAWA, ON K1Y 3A8 CANADA
T 613.237.2345 F 613.237.6423 NAKDESIGNSTRATEGIES.COM
Project

19 CENTREPOINTE DRIVE
OTTAWA, ONTARIO

Title
DETAILS

Date December 2022 Sheet
Scale AS SHOWN
Drawn PG / SC
Checked JSC
Job No. 20-039

L-09