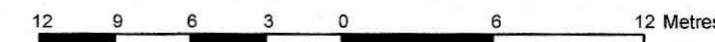


PART OF LOT 10  
CONCESSION 3 (RIDEAU FRONT)  
Geographic Township of Nepean  
CITY OF OTTAWA

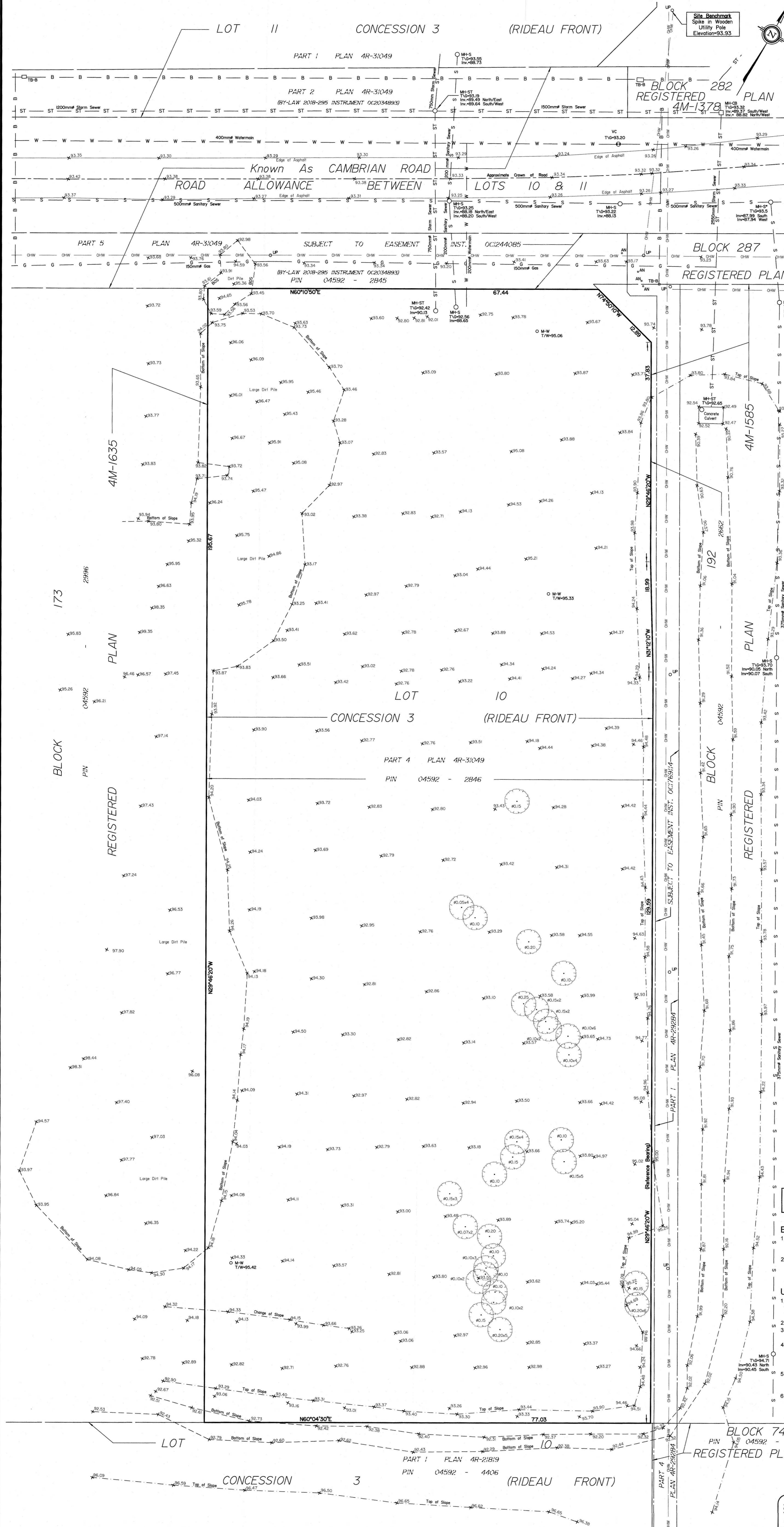
Surveyed by Annis, O'Sullivan, Vollebek Ltd.

Scale 1 : 300



Metric  
DISTANCES SHOWN ON THIS PLAN ARE IN METRES AND  
CAN BE CONVERTED TO FEET BY DIVIDING BY 0.3048

March 28, 2023  
Date  
E. H. Henveyer  
Ontario Land Surveyor



Notes & Legend

Denotes	
VC	Valve Chamber (Watermain)
WV	Water Valve
ST	Underground Storm Sewer
S	Underground Sanitary Sewer
W	Underground Water
G	Underground Gas
OW	Overhead Wires
B	Bell/Telus
UP	Utility Pole
AN	Anchor
(Tree symbol)	Deciduous Tree
TB-B	Bell Terminal Box
MH-ST	Maintenance Hole (Storm Sewer)
MH-S	Maintenance Hole (Sanitary)
Ø	Diameter
+65.00	Location of Elevations
---	Property Line
T/G	Top of Grade Elevation
Inv	Invert
M-W	Monitoring Well
T/W	Top of Well Elevation
BOS	Bottom of Slope

SITE AREA = 14998 m<sup>2</sup>  
BOUNDARY INFORMATION COMPILED FROM  
REGISTERED PLAN 4M-1635, REGISTERED PLAN  
4M-1585 and Plan 4R-31049.

Topographic data was collected under Winter Conditions.  
Snow cover and ice preclude determining location and  
elevation of some topographical data that is otherwise visible.

- ELEVATION NOTES**
- Elevations shown are geodetic and are referred to the CGVD28 geodetic datum, derived from vertical control monument No. 019680071 having a published elevation of 99.742 metres.
  - It is the responsibility of the user of this information to verify that the job benchmark has not been altered or disturbed and that its relative elevation and description agrees with the information shown on this drawing.

- UTILITY NOTES**
- This drawing cannot be accepted as acknowledging all of the utilities and it will be the responsibility of the user to contact the respective utility authorities for confirmation.
  - Only visible surface utilities were located.
  - A field location of underground plant by the pertinent utility authority is mandatory before any work involving breaking ground, probing, excavating etc.
  - Underground Utility data derived from City of Ottawa Utility Sheet reference CC-B-20 and CC-B-21, City of Ottawa Plans reference D07-16-16-0023 P1 Plan No. 17586, sheets 18 & 26, and City of Ottawa Plans reference D07-16-19-0005 Plan No. 17803, sheets 63 & 64.
  - Sanitary and storm sewer grades and inverts were derived from City of Ottawa Plans reference D07-16-16-0023 P1 Plan No. 17586, sheets 18 & 26, and City of Ottawa Plans reference D07-16-19-0005 Plan No. 17803, sheets 63 & 64.
  - Location of storm and sewer manhole marked with \* derived from City of Ottawa Plans reference D07-16-16-0023 P1 Plan No. 17586, sheets 18 & 26 and D07-16-19-0005 Plan No. 17803, sheets 63 & 64.